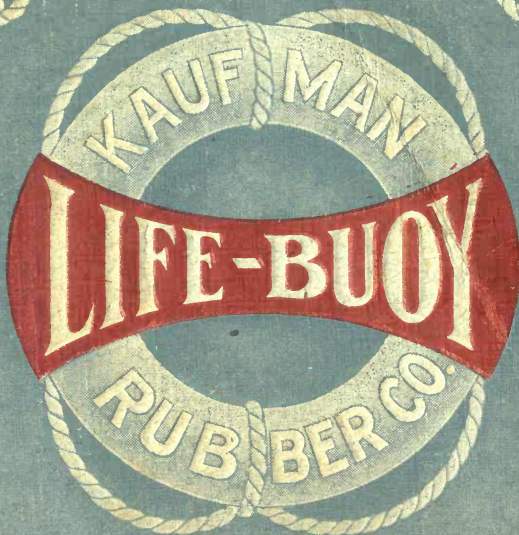


1912 - 1913



# RUBBER FOOTWEAR

The KAUFMAN RUBBER CO.  
LIMITED  
BERLIN, CANADA.

#### BRANCH WAREHOUSES

VANCOUVER, B. C.      EDMONTON, ALTA.  
CALGARY, ALTA.      WINNIPEG, TORONTO,  
OTTAWA, MONTREAL, FREDERICTON, N. B.  
TRURO, N. S., CHARLOTTETOWN, P. E. I.

THE RUBBER

THE RUBBER

THE RUBBER

RUBBER

FOOTWEAR

THE KAUFMAN RUBBER CO.

BRISTOL CANADA

1912

No. 4

1913

CATALOGUE OF  
**LIFE-BUOY BRAND**

---

---



**RUBBER FOOTWEAR**

---

---



**THE KAUFMAN RUBBER CO.**

LIMITED

**BERLIN, ONTARIO**

STOCKS CARRIED AT

VANCOUVER, B. C. EDMONTON, ALTA. WINNIPEG  
BERLIN TORONTO OTTAWA FREDERICTON, N. B.  
MONTREAL TRURO, N. S. CHARLOTTETOWN, P. E. I.

**W**E take pleasure in presenting our Fourth Annual Catalogue of **LIFE-BUOY** Rubbers to a largely increased list of customers.

Our efforts toward the production of a reliable line of Rubber Footwear have been appreciated to such an extent, that we have found it necessary to add largely to our present plant, to meet the growing demands for our goods.

We also desire to draw your attention to a much-needed improvement made in the Standard Case Packings found on pages 54 and 55. The assorted packings for Men's and Women's Fine and Plain Overs, and those for Childs' Croquets, have been changed proportionately to one entire years' production of each size, and will make it unnecessary in future, in many instances, to specify special sized cases. References to standard packed cases will be found on the foot of each page.

For 1912 we hope to meet all demands promptly, and also wish to assure you that the **QUALITY** of **LIFE-BUOY** Rubbers, and the progressive policy of our Company will be maintained.

Asking you to see our new samples before placing your Fall orders, we are,

Yours sincerely,

**THE KAUFMAN RUBBER CO.,**  
**BERLIN, CANADA**  
**LIMITED**  
**AN INDEPENDENT COMPANY**

Special lines, which are not listed in our catalogue, are subject to the approval of Head Office. No **VERBAL** arrangements with salesmen will be recognized.

**FOR PRICES AND TERMS**  
**SEE CURRENT PRICE LIST**

Illustrations showing styles of Toes, will be found on pages 56 to 61.

AR  
685.31002  
K134

LIFE-BUOY



FOOTWEAR

## HIP BOOTS

Friction Lined



No.

B1 **Men's YUKON**, Special Duck, Rolled Edge.

B2 **Men's MACKENZIE**, Pure Gum, Plain Edge.

Packed in bulk, 12 pair of assorted sizes to Case.

Men's 6-9, 6-10, 6-11, 7-11, 7-12.

For standard packings in Boots see page 54.

LIFE-BUOY



FOOTWEAR

## SPORTING BOOT

Light, Pure Gum



No.

**B4 Men's SPORTING**, Rolled Edge, Friction Lined.

Packed in bulk, 12 pair of assorted sizes to Case.

Men's 6-9, 6-10, 6-11, 7-11, 7-12.

For standard packings in Boots see page 54.

LIFE-BUOY



FOOTWEAR

## STORMKING BOOT

Heavy, Pure Gum



No.

- B5 **Men's STORMKING**, Friction Lined, Plain Edge.
- B6 **Men's STORMKING**, Frieze Lined, Plain Edge.
- B105 **Boy's STORMKING**, Friction Lined, Plain Edge.

Packed in bulk, 12 pair of assorted sizes to Case.

Men's 6-9, 6-10, 6-11, 7-11, 7-12. Boys' 1-5.

For standard packings in Boots see page 54.

LIFE-BUOY



FOOTWEAR

## RUPERT

Special Duck Vamp  
Heavy, Pure Gum Leg



No.

**B8 Men's RUPERT**, Rolled Edge, Friction Lined.

This Boot made with Zero Net Lining to order,  
in Case lots only.

Packed in bulk, 12 pair of assorted sizes to Case.

Men's 6-9, 6-10, 6-11, 7-11, 7-12.

For standard packings in Boots see page 54.



LIFE-BUOY



FOOTWEAR

## NIPISSING

Protected Edge  
Heavy, Pure Gum



No.

B9 **Men's NIPISSING**, Leather Insole, Friction Lined.

The protecting corrugation on the edge of this boot assures extra strength and wear.

Packed in bulk, 12 pair of assorted sizes to Case.

Men's 6-9, 6-10, 6-11, 7-11, 7-12.

For standard packings in Boots see page 54.

LIFE-BUOY



FOOTWEAR

## SHORT BOOT

Heavy, Pure Gum



No.

- B10 **Men's SHORT**, Friction Lined.
- B11 **Men's SHORT**, Zero Net Lined.
- B12 **Men's SHORT**, Frieze Lined.
- B110 **Boys' SHORT**, Friction Lined.
- B210 **Youths' SHORT**, Friction Lined.

Packed in bulk, 12 pair of assorted sizes to Case.

Men's 6-9, 6-10, 6-11, 7-11, 7-12.

Boys' 1-5. Youths' 11-13.

For standard packings in Boots see page 54.

LIFE-BUOY



FOOTWEAR

## LEATHER SOLED BOOTS



No.

**B13 Men's L. S. SHORT**, Solid Leather Heel,  
Friction Lined.

This Boot made to order in Case lots with Soles as follows :

- A. Double Soles, hob nailed (see illustration).
- B. Slip Sole, hob nailed.
- C. Slip Sole, standard screw, brass wired.
- D. Single sole, standard screw, brass wired.

Packed in bulk, 12 pair of assorted sizes to Case.

Men's 6-9, 6-10, 6-11, 7-11, 7-12.

For standard packings in Boots see page 54.

LIFE-BUOY



FOOTWEAR

## GASPE

Fishermen's Boot  
Heavy, Pure Gum, Wide Last



- No.  
B14 Men's **GASPE**, STRAIGHT, Zero Net Lined.  
B15 " " R. & L. Zero Net Lined.

The **Gaspe** is particularly adapted to the needs of Fishermen and Firemen, and is made over a last specially designed to meet these requirements.

Packed in bulk, 12 pair of assorted sizes to case.

Men's 6-9, 6-10, 6-11, 7-11, 7-12.

For standard packings in Boots see page 54.

LIFE-BUOY



FOOTWEAR

## CITY BOOT

Light, Pure Gum  
Bright Finish



No.

B16 **Men's CITY**, Grey Wool Net Lined.

B116 **Boys' CITY**, Friction Lined.

Also made in Dull Finish to order.

Packed in bulk, 12 pair of assorted sizes to case.

Men's 6-9, 6-10, 6-11, 7-11, 7-12. Boys' 1-5.

For standard packings in Boots see page 54.

LIFE-BUOY



FOOTWEAR

## CITY BOOT

Light, Pure Gum  
Watered Silk Leg



No.

B316 **Women's CITY**, Black Fleece Lined.

B416 **Misses' CITY**, Black Fleece Lined.

B516 **Childs' CITY**, Black Fleece Lined.

Packed in Cartons, 12 pair of assorted sizes to case.

Women's 2½-7, 3-7, 3-8, 4-8, including half sizes.

Misses' 11-2, in whole sizes only.

Childs' 6-10½, 7-10½, 8-10½, whole sizes except size 10½.

For standard packings in Boots see page 55.



## LEATHER TOP GOODS

In this line we use a Leather specially tanned for the purpose. It is soft and flexible and as nearly water-proof as leather can be. The design of the top is correct and will be found to fit the leg properly and comfortably.

The Duck bottoms are all made with solid heels and have been considerably improved by the addition of a Leather counter, improved lasts, etc., and are of a quality that assures satisfaction to the wearer.

## LEATHER TOPS

**Special Duck Bottoms  
Solid Heels**



- | No.  | Black Top              |
|------|------------------------|
| 2B   | Men's BRITON, 7 inch.  |
| 102B | Boys' " Quarter Heel.  |
| 202B | Youths' " " "          |
| 4B   | Men's EDWARD, 9 inch.  |
| 5B   | Men's COBALT, 12 inch. |

Men's Briton and Edward are also made with a No. 2 Top at a lower price than the regular line.

- | No. | Tan Top                 |
|-----|-------------------------|
| 2T  | Men's EMPEROR, 7 inch.  |
| 4T  | Men's GOVERNOR, 9 inch. |
| 5T  | Men's SENATOR, 12 inch. |

Leather soles attached to Leather Top Lines to order. See styles listed for Boots on page 9.

Packed in bulk, 12 pair of assorted sizes to case.

Men's 6-9, 6-10, 6-11, 7-11, 7-12.

Boys' 1-5. Youths' 9-13, 10-13, 11-13.

For standard packings in Leather Top lines see page 54.



## YAMASKA AND YEOMAN

Pure Gum Bottoms



No.

- 1 **Men's YEOMAN**, Four Eyelet Low, Black Leather Top.
- 3 **Men's YAMASKA**, 7 inch Black Leather Top.

## CARIBOO

"Red Seal" Bottom, Solid Heels

Extra Quality Pure Gum

- C2B **Men's** 7 inch **CARIBOO**, Black Leather Top.
- C4B **Men's** 9 inch **CARIBOO**, Black Leather Top.
- C5B **Men's** 12 inch **CARIBOO**, Black Leather Top.
- C7B **Men's** 16 inch **CARIBOO**, Black Leather Top.

Packed in bulk, 12 pair of assorted sizes in Case.

Men's 6-9, 6-10, 6-11, 7-11, 7-12.

For standard packings in Leather Top lines see page 54.



LIFE-BUOY



FOOTWEAR

## FORESTER & HUNTER



**Special Duck  
Bottom**

**Solid Heel**

7B **Men's FORESTER**, 16 inch Black Leather Top.

7T **Men's HUNTER**, 16 inch Tan Leather Top.

Packed in bulk, 12 pair of assorted sizes to Case.

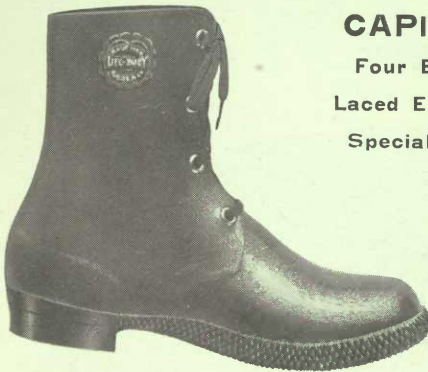
Men's 6-9, 6-10, 6-11, 7-11, 7-12.

For standard packings in Leather Top lines, see page 54.

LIFE-BUOY



FOOTWEAR



## **CAPITOL**

**Four Eyelet  
Laced Excluder  
Special Duck**

No.  
10 **Men's** Friction Lined.

## **HURON**

**Two Buckle High Perfection  
Special Duck**



No.  
11 **Men's** Friction Lined.

Packed in bulk, 12 pair of assorted sizes to Case.  
Men's 6-9, 6-10, 6-11, 7-11, 7-12.

For standard packings in Lumbermen's see page 54.

LIFE-BUOY



FOOTWEAR

## LUMBERKING

Three Eyelet Laced  
Special Duck



No.

12 **Men's** Friction Lined.

## MACDONALD AND RIDEAU

Two Buckle Perfection  
Special Duck



No.

13 **Men's** MACDONALD, Friction Lined.

113 **Boys' 1B** MACDONALD, Friction Lined,  $\frac{1}{4}$  Heel.

14 **Men's** RIDEAU, Fleece Lined.

Packed in bulk, 12 pair of assorted sizes to Case.

Men's 6-9, 6-10, 6-11, 7-11, 7-12. Boys' 1-5.

For standard packings in Lumbermen's see page 54.

LIFE-BUOY



FOOTWEAR

## BRUNSWICK

Laced Perfection

Special Duck



No.  
13L **Men's** Friction Lined.

## LACEIT

Three Eyelet

Special Duck



No.  
18 **Men's** Friction Lined.  
118 **Boys'** Friction Lined,  $\frac{1}{4}$  Heel.

Packed in bulk, 12 pair of assorted sizes in Case.

Men's 6-9, 6-10, 6-11, 7-11, 7-12. Boys' 1-5.

For standard packings in Lumbermen's see page 54.

LIFE - BUOY



FOOTWEAR

## BLAKE

One Buckle  
Special Duck



No.  
20 **Men's** Friction Lined.

## RANGER AND MINER

Protected Edge  
Heavy Pure Gum



No.  
23 **Men's RANGER**, One Buckle, Friction Lined.  
24 **Men's MINER**, Three Eyelet, Friction Lined.  
Packed in bulk, 12 pair of assorted sizes to Case.  
Men's 6-9, 6-10, 6-11, 7-11, 7-12.  
For standard packings in Lumbermen's see page 54.

LIFE - BUOY



FOOTWEAR

## PILGRIM

Two Buckle Perfection      Heavy Pure Gum  
Rolled Edge



No.  
22 Men's Friction Lined.

## TROJAN AND GRENFELL

Lumbermen's Excluders  
Black Fleece Lined



- No.  
31 Men's 2B TROJAN, Gum Vamp, Cloth Quarter  
(to order.)  
32 Men's 1B TROJAN, Gum Vamp, Cloth Quarter.  
132 Boys' 1B TROJAN, Gum Vamp, Cloth Quarter,  
¼ Heel.  
33 Men's GRENFELL, All Gum Lumbermen's  
Excluder.

Packed in bulk, 12 pair of assorted sizes to Case.

Men's 6-9, 6-10, 6-11, 7-11, 7-12. Boys' 1-5.

For standard packings in Lumbermen's see page 54.

LIFE-BUOY



FOOTWEAR

## COMFORT

Lumbermen's Cashmerette Excluder



No.  
30 **Men's** Black Fleece Lined.

## CURLER

Cashmerette Vamp  
and Quarter



No.  
41 **Men's** Frieze Lined.

Packed in bulk, 12 pair of assorted sizes to Case.

Men's 6-9, 6-10, 6-11, 7-11, 7-12.

For standard packings in Lumbermen's see page 54.



# MANITOBA

Cashmerette Excluder

Black Fleece Lined



- |     |  |         |
|-----|--|---------|
| No. |  | Toe     |
| 47  | <b>Men's 1B AND 2 STRAPS</b> . . . . . | Regular |
| 48  | <b>Men's THREE BUCKLES</b> . . . . .   | Regular |

The Manitoba with 1B and Two Straps sent unless Three Buckles specially ordered.

## RAILROAD MANITOBA

- |     |  |         |
|-----|--|---------|
| No. |  | Toe     |
| 47R | <b>Men's, with Tap and Heel (to order)</b> . . . . . | Regular |

Packed in bulk, 12 pair of assorted sizes to Case.

Men's 6-9, 6-10, 6-11, 7-11, 7-12.

For standard packings in Men's Cloth Shoes see page 54.





**QUEBEC**  
Cashmerette Arctic  
Rolled Edge

No.		Toe
50	<b>Men's</b> Black Fleece Lined .....	Regular

**ARCTICS**

No.	<b>Cashmerette</b>	Toe
349	<b>Women's</b> Black Fleece Lined.....	Ideal
449	<b>Misses'</b> Black Fleece Lined.....	Ideal
549	<b>Childs'</b> Black Fleece Lined.....	Ideal



**RAILROADER**

**Cashmerette Arctic**

No.	<b>Heavy Double Sole and Heel</b>	Toe
52	<b>Men's TWO BUCKLE</b> .....	Regular
53	<b>Men's ONE BUCKLE</b> .....	Regular

This shoe has an extra heavy double sole and heel and is designed to meet all demands for an extra wearing bottom.

Packed in bulk, 12 pair of assorted sizes to Case.

Men's 6-9, 6-10, 6-11, 7-11, 7-12.

Womens 2½-7, 3-7, 3-8, 4-8. Misses' 11-2 in whole sizes only.

Child's 6-10½, 7-10½, 8-10½, in whole sizes except size 10½.

For standard packings in Men's and Women's Cloth Shoes see pages 54 and 55.



## FELT SHOE OVER



No.  
36 **Men's** Black Net Lined.

## MOCCASIN OVER

Spring Heel    Dull Finish    Rolled Edge

37 **Men's** Heavy White Net Lined.

## SERVICE

Rolled Edge    Black Net Lined

The **Service** is made to stand a greater amount of wear and tear than the Fine cartoned rubber, and for general use may be recommended in place of the Favorite.

It is heavier built throughout and the coarse sole design and special qualities used in the making, assure excellent wearing results.



No.		Toe
40	<b>Men's</b> . . . . .	Ideal
140	<b>Boys'</b> . . . . .	Ideal
240	<b>Youths'</b> . . . . .	Ideal
340	<b>Women's</b> . . . . .	Ideal
440	<b>Misses'</b> . . . . .	Ideal
540	<b>Childs'</b> . . . . .	Ideal

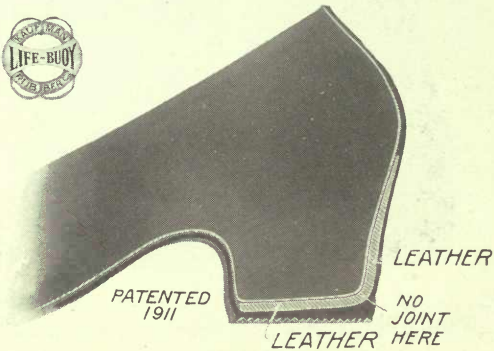
Packed in bulk, 25 pair of assorted sizes to Case.

For standard packings in above lines see pages 54 and 55.



## NEW PATENTED LEATHER INNERHEEL AND COUNTER

The most important improvement in  
Rubber Footwear in recent years.



Prevents small heeled shoes from cutting through  
from inside.

In all Life-Buoy Men's and Women's  
high-heeled specialties.

Every shoe dealer will, at a glance, recognize the importance of the Leather Innerheel and Counter as illustrated in the above cut.

After a thorough trial, covering a period of manufacture of nine months' time, we feel every confidence in recommending the lines with these improved Innerheels as being greatly superior to the old style, without this reinforcement. This is particularly the case in the higher heels, where a rigid counter is of special value in retaining the shape of the rubber.

Ask our salesmen to supply you with a sectional heel showing this leather insert, for display purposes.

For regular standard packings for full Case assortments see pages 54 and 55.

Illustrations showing styles of Toes will be found on pages 56 to 61.

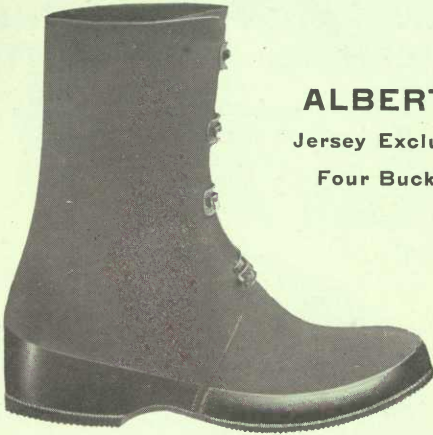
**LIFE - BUOY**

**Cartoned**



**FOOTWEAR**

**Specialties**



**ALBERTA**

**Jersey Excluder**

**Four Buckle**

No.

Toe

42 **Men's** Black Fleece Lined ..... Ideal



**DUKE**

**Jersey Arctic**

No.

Toe

44 **Men's** Black Fleece Lined ..... { Regal  
Harvard  
Derby

Packed in Cartons, 12 pair of assorted sizes to Case.

Men's 6-9, 6-10, 6-11, 7-10, 7-11.

Dukes are also made in sizes 5 and 5½.

For standard packings in Men's Cloth Shoes see page 54.

LIFE-BUOY

Cartoned



FOOTWEAR

Specialties

## PEARY

Jersey Excluder



No.

Toe

- 43 **Men's TWO BUCKLE**, Black Fleece Lined.. Ideal
- 46 **Men's ONE BUCKLE**, Black Fleece Lined.. Ideal

## ROSSEAU

Jersey Arctic  
Buckled Behind



No.

Toe

- 45 **Men's** Black Fleece Lined..... Regal
- Packed in Cartons, 12 pair of assorted sizes to Case.  
Men's 6-9, 6-10, 6-11, 7-10, 7-11.

For standard packings in Men's Cloth Shoes see page 54.

LIFE-BUOY

Cartoned



FOOTWEAR

Specialties



## QUEEN

Jersey Excluder

No.

342 **Women's** Black Fleece Lined.....

Toe  
Ideal  
Elite



## COUNTESS

Jersey Button

Gaiter

No.

343 **Women's** Black Fleece Lined.....

Toe  
Ideal  
Elite

Packed in Cartons, 12 pair of assorted sizes to Case.

Women's 2½-7, 3-7, 3-8, 4-8, including half sizes.

For standard packings in Women's Cloth Shoes  
see page 55.

LIFE-BUOY

Cartoned



FOOTWEAR

Specialties



## VICTORIA

Cashmerette Excluder

Two Buckle

No.		Toe
348	<b>Women's</b> Black Fleece Lined.....	} English Ideal
448	<b>Misses'</b> Black Fleece Lined .....	
548	<b>Child's</b> Black Fleece Lined .....	Ideal

## STOCKING OVER



No.		Toe
354	<b>Women's</b> .....	Ideal
454	<b>Misses'</b> .....	Ideal
554	<b>Child's</b> .....	Ideal

Packed in Cartons, 12 pair of assorted sizes to Case.

Women's 2½-7, 3-7, 3-8, 4-8, including half sizes.

Misses' 11-2 in whole sizes only.

Childs' 6-10½, 7-10½, 8-10½ in whole sizes except size 10½.



Cartoned

Specialties

## BLIZZARD

Fine Jersey Storm



- |     |  |                             |
|-----|--|-----------------------------|
| No. |  | Toe                         |
| 56  | <b>Men's</b> Black Fleece Lined .....  | { Ideal<br>Harvard<br>Derby |
| 156 | <b>Boys'</b> Black Fleece Lined (to order, in Case lots only, 3 to 5, including half sizes) .... | Ideal                       |

## EUREKA

Fine Rolled Edge Storm



- |     |                                   |       |
|-----|-----------------------------------|-------|
| No. |                                   | Toe   |
| 58  | <b>Men's</b> Black Net Lined..... | Ideal |

Packed in Cartons, 25 pair of assorted sizes to Case.

Men's 5-9, 6-9, 6-10, 6-11.

For standard packings in Men's Fine see page 54.

Illustrations showing styles of toes, will be found on pages 56 to 61.





**TEMPEST**

**Fine Storm Over**



No.

60 **Men's TEMPEST**, Black Net Lined . . . .

Toe  
Ideal  
Regal  
Harvard  
Derby

61 **Men's TEMPEST**, Black Fleece Lined . . . . . Ideal

59 **Men's TEMPEST**, **CLOSED SIDES** . . . . . Ideal

60R **Men's RAILROAD TEMPEST**, Tap & Heel, Ideal

**PARAGON & TEUTON**

**Fine Light Rolled Edge Overs**

**Black Net Lined**



No.

62 **Men's PARAGON**, Self-Acting . . . . . Ideal

63 **Men's TEUTON**, Soft-Back . . . . . Ideal

Toe

Packed in Cartons, 25 pair of assorted sizes to Case.

Men's 5-9, 6-9, 6-10, 6-11.

For standard packings in Men's Fine see page 54.

Illustrations showing styles of toes will be found on pages 56 to 61.



Cartoned

Specialties

Please note that the Men's Fine Light Rubbers, although specially constructed to meet the needs of the Finer Grades of Footwear, will not give satisfactory results, if worn over heavy leather shoes for rough usage. The Men's Service should be recommended for this purpose.

If Life-Buoy Rubbers are sold and used for the purpose for which they are made, they will give entire satisfaction in regard to wearing quality.



**FAVORITE**  
Self-Acting

No.

66 **Men's** Black Net Lined .....

- Toe
- Roman
- Ideal
- Regal
- Yale
- Harvard

166 **Boys'** Black Net Lined (to order, in case lots only, 3 to 5, including half sizes) ..Harvard



**EXCELLO**  
Soft Back

No.

68 **Men's** Black Net Lined. ....

- Toe
- Ideal
- Regal
- Ascot
- Derby

Packed in Cartons, 25 pair of assorted sizes to Case.  
Men's 5-9, 6-9, 6-10, 6-11.

For standard packings in Men's Fine see page 54.  
Illustrations showing styles of Toes will be found on pages 56 to 61.



## ACME AND RELIANCE

Fine Toecap Overs

Black Net Lined



- |     |  |       |
|-----|--|-------|
| No. |  | Toe   |
| 70  | <b>Men's ACME</b> , Self-Acting .....  | Ideal |
| 71  | <b>Men's RELIANCE</b> , Soft-Back..... | Regal |

## ZEPHYR

Extra Light

Self-Acting



- |     |                                    |                             |
|-----|------------------------------------|-----------------------------|
| No. |                                    | Toe                         |
| 75  | <b>Men's White Net Lined</b> ..... | { Regal<br>Model<br>Harvard |

Packed in Cartons, 25 pair of assorted sizes to Case.  
Men's 5-9, 6-9, 6-10, 6-11.

For standard packings in Men's Fine see page 54.  
Illustrations showing styles of Toes will be found on  
pages 56 to 61.



**CLOG**  
Self-Acting

No. 76 **Men's** Black Net Lined ..... Toe Ideal

**STRAP SANDAL**

Strap Over Instep      Soft-Back

74 **Men's** White Net Lined ..... Regal



**GRIPSOLE**  
Self-Acting

No. 77 **Men's** Black Net Lined ..... { Toe Ideal Harvard Ascot

**FOOTHOLD**

78 **Men's** White Net Lined ..... Ascot

Packed in Cartons, 25 pair of assorted sizes to Case.  
Men's 5-9, 6-9, 6-10, 6-11.

For standard packings in Men's Fine see page 54.

Illustrations showing styles of toes will be found on pages 56 to 61.



**Cartoned**

**Specialties**

**BLIZZARD**

**Fine Jersey Storm**



- |     |  |  |   |       |                |                 |                |
|-----|--|--|---|-------|----------------|-----------------|----------------|
| No. |  | Toe  |   |       |                |                 |                |
| 356 | <b>Women's</b> Black Fleece Lined..    | <table border="0"> <tr> <td rowspan="4" style="font-size: 3em; vertical-align: middle;">}</td> <td style="padding-left: 10px;">Ideal</td> </tr> <tr> <td style="padding-left: 10px;">Opera (Semi-C)</td> </tr> <tr> <td style="padding-left: 10px;">Vassar (High-C)</td> </tr> <tr> <td style="padding-left: 10px;">Elite (High-C)</td> </tr> </table> | } | Ideal | Opera (Semi-C) | Vassar (High-C) | Elite (High-C) |
| }   | Ideal                                  |  |   |       |                |                 |                |
|     | Opera (Semi-C)                         |  |   |       |                |                 |                |
|     | Vassar (High-C)                        |  |   |       |                |                 |                |
|     | Elite (High-C)                         |  |   |       |                |                 |                |
| 456 | <b>Misses'</b> Black Fleece Lined..... | Ideal  |   |       |                |                 |                |
| 556 | <b>Childs'</b> Black Fleece Lined..... | Ideal  |   |       |                |                 |                |

**EUREKA**

**Fine Rolled Edge Storm**



- |     |                                      |       |
|-----|--------------------------------------|-------|
| No. |                                      | Toe   |
| 358 | <b>Women's</b> Black Net Lined ..... | Ideal |

Packed in Cartons, 25 pair of assorted sizes to Case.

Women's 2½-6, 2½-7, 3-7. Misses' 11-2.

Childs' 4-10½, 6-10½, 7-10½, 8-10½.

Women's Opera, Vassar and Elite Toes also made in sizes 1, 1½ and 2.

For standard packings in Women's Fine see page 55.

Illustrations showing styles of Toes will be found on pages 56 to 61.

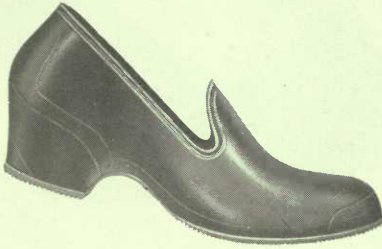


Cartoned

Specialties

**TEMPEST**

Fine Light Storm



No.		Toe
		{ Ideal
360	<b>Women's</b> Black Net Lined . . . . .	{ Opera (Semi-C)
		{ Boston (Cuban)
		{ Vassar (High-C)
		{ Elite (High-C)
361	<b>Women's</b> Black Fleece Lined . . . . .	Opera (Semi-C)
359	<b>Women's</b> <b>CLOSED SIDES</b> , Black Net	
	Lined . . . . .	Ideal

**MYRTLE**

Fine Toecap Croquet



No.		Toe
371	<b>Women's</b> Black Net Lined . . . . .	{ Ideal
		{ Opera(Semi-C)

Packed in Cartons, 25 pair of assorted sizes to Case.  
 Womens 2½-6, 2½-7, 3-7. Opera, Boston, Vassar and  
 Elite Toes, also made in sizes 1, 1½ and 2.  
 For standard packings in Women's Fine, see page 55.  
 Illustrations showing styles of Toes, will be found on  
 pages 56 to 61.



**FAVORITE**

**Fine Light Croquet**

- |  |                     |
|--|---------------------|
| No.                                      | Toe                 |
|  | { Roman             |
|  | { Ideal             |
|  | { Grecian           |
| 366 <b>Women's</b> Black Net Lined....   | { Opera (Semi C)    |
|  | { Boston (Cuban)    |
|  | { Vassar (High C)   |
|  | { Elite (High C)    |
|  | { Fashion (Extra H) |
| 367 <b>Women's</b> Black Fleece Lined... | Opera (Semi C)      |
| 466 <b>Misses'</b> Black Net Lined.....  | Opera               |



**PEARL**

**Fine Light Croquet**

**Fancy Upper**

- |   |                  |
|---|------------------|
| No.                                     | Toe              |
| 372 <b>Women's</b> Black Net Lined..... | { Ideal          |
|   | { Opera (Semi C) |

Packed in Cartons, 25 pair of assorted sizes to Case. Women's 2½-6, 2½-7, 3-7. Opera, Boston, Vassar, Elite, and Fashion Toes also made in sizes 1, 1½, 2. Misses' 11-2.

For standard packings in Women's Fine see page 55.

Illustrations showing styles of toes, will be found on pages 56 to 61.



## ZEPHYR

Fine Croquet  
Extra Light Weight



No.

Toe

375 **Women's** White Net Lined... { Vassar (High-C)  
Elite (High-C)  
Fashion (Extra-H)

## STRAP SANDAL

Strap Over Instep



No.

Toe

374 **Women's** White Net Lined... { Opera (Semi-C)  
Vassar (High-C)

Packed in Cartons, 25 pair of assorted sizes to Case.

Women's 2½-6, 2½-7, 3-7. Opera, Vassar, Elite and Fashion Toes also made in sizes 1, 1½ and 2

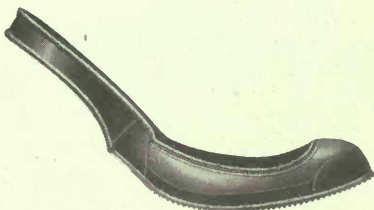
For standard packings in Women's Fine see page 55.

Illustrations, showing styles of Toes, will be found on pages 56 to 61.





## FAIRY FOOHOLD



- | No.                                     | Toe                                 |
|---|-------------------------------------|
| 377 <b>Women's</b> White Net Lined..... | { Vassar (High-C)<br>Elite (High-C) |

## FOOTHOLD



- | No.                                     | Toe                                 |
|---|-------------------------------------|
| 378 <b>Women's</b> White Net Lined..... | { Vassar (High-C)<br>Elite (High-C) |

Packed in Cartons, 25 pair of assorted sizes to Case.  
 Women's 2½-6, 2½-7, 3-7. Both of above Toes also made  
 in sizes 1, 1½ and 2.

For standard packings in Women's Fine see page 55.  
 Illustrations, showing styles of Toes, will be found on  
 pages 56 to 61.

RUBBER-LEAF



FOOTWEAR

## SPECIAL SHORT BOOT

Heavy, Gum Boot



No.  
B10X **Men's** Friction Lined.

This boot is only stocked with Friction Lining. If other linings desired, will be made to order at a small advance in price.

Packed in bulk, 12 pair of assorted sizes to Case.

Men's 6-9, 6-10, 6-11, 7-11, 7-12.

For standard packings in Men's Boots see page 54.

RUBBER-LEAF

RUBBER LEAF

FOOTWEAR



## SIMCOE

Extra High, Two Buckle  
Plain Tap, Quarter Heel



No.  
80 **Men's** Friction Lined.

## LACED PERFECTION

Plain Tap, Quarter Heel



No.  
81L **Men's** Friction Lined.

Packed in bulk, 12 pair of assorted sizes to Case.

Men's 6-9, 6-10, 6-11, 7-11, 7-12.

For standard packings in Men's Lumbermen's see page 54.

**PERFECTION**

Plain Tap, Quarter Heel  
Friction Lined



- No. 81 **Men's TWO BUCKLE.**
- 181 **Boys' " "**
- 82 **Men's ONE BUCKLE.**
- 182 **Boys' " "**
- 282 **Youths' " "**

**CARLTON**

Plain Tap, Quarter Heel  
Three Eyelet



- No. 84 **Men's Friction Lined.**
- 184 **Boys' Friction Lined.**
- 284 **Youths' Friction Lined.**

Packed in bulk, 12 pair of assorted sizes to Case.

Men's 6-9, 6-10, 6-11, 7-11, 7-12.

Boys' 1-5. Youths' 9-13, 10-13, 11-13.

For standard packings in Lumbermen's see page 54.

RUBBER-LEAF

RUBBER LEAF

FOOTWEAR



BRAND

## NATIONAL

Plain Tap, Quarter Heel,  
One Buckle



- No. 83 **Men's** Friction Lined.
- 183 **Boy's** Friction Lined.
- 283 **Youths'** Friction Lined.

## EXCLUDER

Cashmerette  
Black Fleece Lined



- |     |                               |                    |
|-----|-------------------------------|--------------------|
| No. |                               | Toe                |
| 85  | <b>Men's TWO BUCKLE</b> ..... | } Regular<br>Ideal |
| 185 | <b>Boy's</b> " " .....        |                    |
| 86  | <b>Men's ONE BUCKLE</b> ..... | } Regular<br>Ideal |

Packed in bulk, 12 pair of assorted sizes to Case.  
Men's 6-9, 6-10, 6-11, 7-11, 7-12. Boys' 1-5.  
Youths' 9-13, 10-13, 11-13.

For standard packings in Lumbermen's and Cloth  
Shoes see page 54.

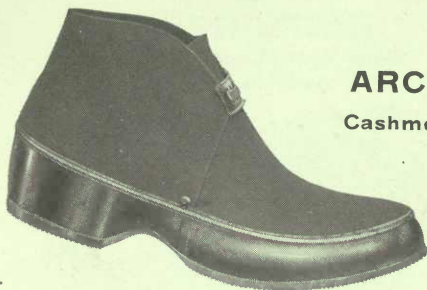
RUBBER - LEAF

RUBBER LEAF



BRAND

FOOTWEAR



### ARCTIC

Cashmerette

- |     |   |           |
|-----|---|-----------|
| No. |   | Toe       |
| 87  | <b>Men's</b> Black Fleece Lined .....   | { Regular |
|     |   | { Ideal   |
| 187 | <b>Boys'</b> Black Fleece Lined .....   | Ideal     |
| 287 | <b>Youths'</b> Black Fleece Lined ..... | Ideal     |



### BUTTON GAITER

Cashmerette

- |     |   |       |
|-----|---|-------|
| No. |   | Toe   |
| 388 | <b>Women's</b> Black Fleece Lined ..... | Ideal |
| 488 | <b>Misses'</b> Black Fleece Lined ..... | Ideal |
| 588 | <b>Childs'</b> Black Fleece Lined ..... | Ideal |

Packed in bulk, 12 pair of assorted sizes to case.

Men's 6-9, 6-10, 6-11, 7-11, 7-12. Boys' 1-5.

Youths' 10-13, 11-13.

Women's 2½-7, 3-7, 3-8, 4-8, including half sizes.

Misses' 11-2, whole sizes.

Childs' 6-10½, 7-10½, 8-10½ in whole sizes only, except size 10½.

For standard packings see pages 54 and 55.

RUBBER-LEAF



FOOTWEAR

## HIGH CUT OVER

Black Net Lined



No.		Toe
90	<b>Men's</b> .....	Ideal
190	<b>Boys'</b> .....	Ideal
390	<b>Women's.</b> .....	} Ideal Opera (Semi-C)
490	<b>Misses'</b> .....	
590	<b>Childs'</b> .....	Ideal

## MOCCASIN OVER

Spring Heel, Dull Finish



- No. 93 **Men's** Heavy White Net Lined.  
 193 **Boys'** Heavy White Net Lined.

Packed in bulk, 25 pair of assorted sizes to Case.  
 Men's High Cut Overs, 6-9, 6-10, 6-11. Boys' 1-5.

Men's Moccasin Overs, whole sizes only,  
 also stocked 7-11, 7-12.

Women's 2½-6, 2½-7, 3-7. Misses' 11-2.  
 Childs' 4-10½, 5-10½, 6-10½, 7-10½, 8-10½.

For standard packings see pages 54 and 55.



### PLAIN OVER



#### Black Net Lined

No.		Toe
95	<b>Men's</b> .....	{ Regular (W) Ideal
195	<b>Boys'</b> .....	{ Ideal Harvard
295	<b>Youths'</b> .....	Ideal

#### Black Fleece Lined

No.		
96	<b>Men's</b> .....	Ideal
196	<b>Boys'</b> .....	Ideal
296	<b>Youths'</b> .....	Ideal

### SAXON OVER

#### W W Width

No.	
98	<b>Men's</b> Black Net Lined.

Packed in bulk, 25 pair of assorted sizes to Case.

Men's 6-9, 6-10, 6-11, including 1/2 sizes. Saxon and Regular in whole sizes only, also stocked 7-11 and 7-12.

Boys' 1-5. Youths' 10-13 and 11-13.

For standard packings see page 54.





## PLAIN CROQUET



### Black Net Lined

No.		Heel	Toe
395	<b>Women's</b> .....		{ Roman Ideal Opera (Semi-C) Elite (High-C)
495	<b>Misses'</b> .....		{ Ideal Opera

### Spring

395S	<b>Womens'</b> .....		Ideal
495S	<b>Misses'</b> .....		Ideal
595	<b>Childs'</b> .....		{ Ideal Instructor

### Black Fleece Lined

396	<b>Womens'</b> .....		Ideal
496	<b>Misses'</b> .....		Ideal
596	<b>Childs'</b> .....		Ideal

## MATRON

### Low Heel

398 **Women's** Black Net lined. .... W.

Packed in bulk, 25 pair of assorted sizes to Case.

Women's 2½-6, 2½-7, 3-7. Misses' 11-2.

Childs' 4-10½, 5-10½, 6-10½, 7-10½, 8-10½.

Childs' Ideal Toe also made in sizes 3 and 3½.

Matron 3-7, 3-8, 4-8 in whole sizes only.

Women's Spring Heel Croquet 2½-5 and 2½-6.

For standard packings see page 55.

LIFE - BUOY



OUTING SHOES

## MARATHON

Tan Duck, Black Soles



CARTONED

No.

400 Men's **BALMORAL**

The discs on the soles of this shoe assure an excellent grip and will not come off like spikes do.

## BOWLING

White Duck, White Soles, White Rubber Toecap



CARTONED

No.

412 Men's **BALMORAL**

417 Men's **OXFORD**

The Rubber Toecap on the Men's Bowling affords extra protection from dampness and prevents soiling of the duck upper.

Lines listed above made with Leather Insoles only.

For regular assorted packings see page 53.

LIFE - BUOY



OUTING SHOES

## SPORTING BALMORAL AND OXFORD

White Duck, White Soles



CARTONED

No. **BALMORAL**  
410 **Men's**  
710 **Women's**

No. **OXFORD**  
415 **Men's**  
715 **Women's**

## TAN BALMORAL AND OXFORD

Tan Duck, White Soles



CARTONED

No. **BALMORAL**  
411 **Men's**  
711 **Women's**

No. **OXFORD**  
416 **Men's**  
716 **Women's**

This line is made of Golden Brown Duck, very serviceable and attractive in appearance.

Packed 25 pair to Case of assorted sizes.

Men's 6-9, 6-10, 6-11. Boy's 1-5.

Women's 2½-6, 2½-7, 3-7.

Men's made to order in half sizes.

Lines listed above made with Leather Insoles only.

LIFE - BUOY



OUTING SHOES

## TENNIS BALMORAL

White Duck      Black Soles



CARTONED

No.  
420 **Men's.**  
520 **Boys'.**  
620 **Youths'.**  
720 **Women's.**

## TENNIS OXFORD

White Duck      Black Soles



CARTONED

No.  
425 **Men's.**  
525 **Boys'.**  
725 **Women's.**

Lines listed above made with Leather Insoles only.  
For regular assorted packings see page 53.

LIFE - BUOY



OUTING SHOES

## LACROSSE SPECIAL

Tan Duck      Black Soles      Rolled Edge



CARTONED

No.

414 **Men's BALMORAL.**

As its name implies, this shoe is specially made for lacrosse players. It is strongly built and its construction on the lines of a hockey ball gives support to foot and ankle.

## LACROSSE BALMORAL

Black Duck      Black Soles



CARTONED

No.

430 **Men's.**

530 **Boys'.**

No.

630 **Youths'.**

730 **Women's.**

Lines listed above made with Leather Insoles only.

RUBBER - LEAF



OUTING SHOES

## OUTING BALMORALS

Black Soles, Blucher Cut, Blue Duck  
Cotton Insoles only



No.  
440 **Men's**  
540 **Boys'**  
640 **Youths'**

We cannot make Childs' Balmorals.

## OUTING OXFORDS

Black Soles, Blucher Cut, Blue Duck  
Cotton Insoles only



No.  
446 **Men's**  
546 **Boys'**  
646 **Youths'**  
946 **Childs'**

RUBBER - LEAF



OUTING SHOES

## BATHING OXFORDS

Blue Duck

Black Soles



No. **Men's**  
 456 **Boys'**  
 556 **Youths'**  
 656 **Childs'** } Cotton Insoles only.

### Assorted Packings for Outing Shoes

25 Pairs to Case

#### MEN'S

Sizes	6	7	8	9	10	11	
6-9	5	7	8	5			25 pair
6-10	5	7	8	4	1	25 pair	
6-11	4	6	8	4	2	1	25 pair

#### BOYS'

Sizes	1	2	3	4	5	
1-5	5	5	5	5	5	25 pair

#### YOUTHS'

Sizes	11	12	13	
11-13	7	8	10	25 pair

#### WOMEN'S

Sizes	2½	3	½	4	½	5	½	6	½	7	
2½-6	1	3	3	4	4	5	3	2	25 pair		
2½-7	1	2	2	4	4	5	3	2	1	1	25 pair
3-7	2	2	4	4	5	3	3	1	1	25 pair	

#### CHILDS'

Sizes	6	7	8	9	10	
6-10	3	4	5	6	7	25 pair
8-10	7			8	10	25 pair

# Assorted Packings for Men's, Boys' and Youths'

## MEN'S

### Boots, Lumbermen's, Cashmerette Arctics and Excluders (Bulk)

Sizes	6	7	8	9	10	11	12	
6-9	2	3	4	3				12 pair
6-10	1	3	4	3	1			12 pair
6-11	1	2	3	3	2	1		12 pair
7-11		2	3	4	2	1		12 pair
7-12		2	3	3	2	1	1	12 pair

### Fine Jersey Arctics and Jersey Excluders (Cartoned)

Sizes	6	½	7	½	8	½	9	½	10	½	11	
6-9	1	1	2	1	3	2	2					12 pair
6-10	1	1	2	1	2	1	2	1	1			12 pair
6-11	1		2	1	2	1	2	1	1		1	12 pair
7-10			2	1	3	2	2	1	1			12 pair
7-11			1	1	2	1	2	1	2	1	1	12 pair

### Felt Overs, Moccasin Overs, Service, Saxon and Plain Overs, Regular Toe (Bulk)

Sizes	6	7	8	9	10	11	12	
6-9	4	7	8	6				25 pair
6-10	2	6	8	6	3			25 pair
6-11	2	5	7	6	4	1		25 pair
7-11		4	8	7	4	2		25 pair
7-12		2	5	7	6	4	1	25 pair

### Fine Cartoned Specialties and Plain Overs, all Toes except Saxon and Regular

Sizes	5	½	6	½	7	½	8	½	9	½	10	½	11	
5-9	1	2	3	3	5	3	4	2	2					25 pair
6-9			3	3	4	4	5	3	3					25 pair
6-10			2	2	4	3	5	3	3	1	2			25 pair
6-11			2	1	3	3	4	3	3	2	2	1	1	25 pair

## BOYS'

### Boots, Lumbermen's and Arctics

Sizes	1	2	3	4	5	
1-5	2	2	2	3	3	12 pr.

### Plain Overs and Service

Sizes	1	2	3	4	5	
1-5	5	5	5	5	5	25 pr.

## YOUTHS'

### Boots, Lumbermen's and Arctics

Sizes	9	10	11	12	13	
9-13	1	2	3	3	3	12 pr.
10-13		1	3	3	5	12 pr.
11-13			3	4	5	12 pr.

### Plain Overs and Service

Sizes	10	11	12	13		
10-13	2	6	8	9	25 pr.	
11-13			7	8	10	25 pr.



# Assorted Packings for Women's, Misses' and Childs'

## WOMEN'S

### Boots, Gaiters, Jersey Arctics and Stocking Overs

Sizes	2½	3	½	4	½	5	½	6	½	7	8	
2½-7	1	1	1	2	1	2	1	1	1	1	1	12 pair
3-7		1	1	2	1	2	1	2	1	1		12 pair
3-8		1	1	1	1	2	1	2	1	1	1	12 pair
4-8				2	1	3	1	2	1	1	1	12 pair

### Fine Cartoned Specialties and Croquets

Sizes	1	½	2	½	3	½	4	½	5	½	6	½	7	
1-6	1	1	1	1	3	3	4	3	4	2	2			25 pair
2½-6				1	3	3	4	4	5	3	2			25 pair
2½-7				1	2	2	4	4	5	3	2	1	1	25 pair
3-7					2	2	4	4	5	3	3	1	1	25 pair

### Women's Croquet, Spring Heel

Sizes	2½	3	½	4	½	5	½	6	
2½-5	5	5	5	5	3	2			25 pair
2½-6	5	5	4	4	3	2	1	1	25 pair

### Matron

Sizes	3	4	5	6	7	8	
3-7	2	5	8	6	4		25 pair
3-8	2	5	7	6	4	1	25 pair
4-8		4	7	7	5	2	25 pair

## MISSES'

### Boots, Gaiters, Jersey Arctics and Stocking Overs

Sizes	11	12	13	1	2	
11-2	2	2	2	3	3	12 pair

### Croquets and Service

Sizes	11	½	12	½	13	½	1	½	2	
11-2	2	1	3	2	4	2	4	2	5	25 pair

## CHILD'S

### Boots, Gaiters, Jersey Arctics and Stocking Overs

Sizes	6	7	8	9	10	10½	
6-10½	1	2	2	3	3	1	12 pair
7-10½		2	2	3	3	2	12 pair
8-10½			3	3	4	2	12 pair

### Croquets and Service

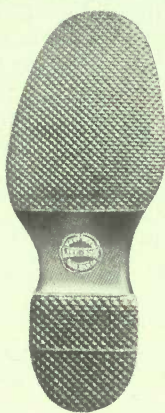
Sizes	4	½	5	½	6	½	7	½	8	½	9	½	10	½	
4-10½	1	1	1	1	2	1	2	1	3	2	3	2	3	2	25 pair
5-10½		1	1	2	1	2	1	3	2	4	2	4	2	4	25 pair
6-10½				2	1	2	2	3	2	4	2	4	3	3	25 pair
7-10½					2	2	2	3	2	4	3	5	4	4	25 pair
8-10½								4	3	5	3	6	4	4	25 pair

LIFE-BUOY



FOOTWEAR

## MEN'S FULL FITTERS



**Men's SAXON**   **Men's REGULAR**   **Men's ROMAN**  
Whole Sizes 6 to 13.   Whole sizes 6 to 13.   Sizes 5 to 12.

## MEN'S GENERAL FITTERS



**Men's IDEAL**   **Men's REGAL**   **Men's YALE**  
Sizes 5 to 13.   Sizes 5 to 11.   Sizes 5 to 12.

**Ideal**—General Fitter.

**Regal**—Fine Fitter for first quality goods.

**Yale**—For hump-toe, medium weight shoes.



**MEN'S FINE FITTERS**



**Men's MODEL**  
Sizes 5 to 11.



**Men's HARVARD**  
Sizes 5 to 11.



**Men's ASCOT F. AND DERBY W.**

For High Heels and Hump Toes

Sizes 5-11.

Standard packed Cases 5-9, 6-9, 6-10, 6-11.



## WOMEN'S FULL AND MEDIUM FITTERS



**Women's  
ROMAN**  
Sizes 2½ to 7.



**Women's  
IDEAL**  
Sizes 2½ to 8.



**Women's  
GRECIAN**  
Sizes 2½ to 7.



**Women's OPERA**  
Semi-Cuban Heel, General Fitter.  
Sizes 1 to 8.



## WOMEN'S FINE FITTERS



### Women's BOSTON

Cuban Heel for fine goods.

Sizes 1 to 7.



### Women's VASSAR

High Cuban Heel, High Toe, with good width across ball.

Sizes 1 to 7.

Standard packed Cases 1-6, 2½-6, 2½-7, 3-7

Women's Fine Fitters showing Profiles of Heels continued on following page.



## WOMEN'S FINE FITTERS

(Continued)



**Women's ELITE**

High Cuban, with fair width across ball.

Sizes 1 to 7.



**Women's FASHION**

Extra High Cuban, or Spike Heel.

Sizes 1 to 7.

Standard packed Cases 1-6, 2½-6, 2½-7, 3-7.



## TOES IN BOYS' AND YOUTHS'



**Boys' and Youths' IDEAL**  
Whole Sizes 1 to 5  
and 10 to 13.



**Boys' HARVARD**  
Whole Sizes 1 to 5.

## TOES IN MISSES' AND CHILDS'



**Misses' OPERA**  
Sizes 11-2.



**Misses' and Childs' IDEAL**  
Misses' 11-2.  
Childs' 3-10½.



**Childs' INSTRUCTOR**  
Sizes 4-10½.

# NAMES OF SHOES

## ALPHABETICALLY ARRANGED

Page	Sample No.	SHOE	Toe
33	70	<b>ACME</b> , Men's, Toecap, Self-Acting.....	Ideal
26	42	<b>ALBERTA</b> , Men's, 4 Buckle Jersey.....	Ideal
44	87	<b>ARCTIC</b> , Men's, Rubber-Leaf.....	Regular, Ideal
44	187	“ Boys' “ .....	Ideal
44	287	“ Youths, “ .....	Ideal
23	349	<b>ARCTIC</b> , Women's Life-Buoy.....	Ideal
23	449	“ Misses' “ .....	Ideal
23	549	“ Childs' “ .....	Ideal
19	20	<b>BLAKE</b> , Men's, One Buckle, Duck.....	
30	56	<b>BLIZZARD</b> , Men's, Jersey Storm.....	Ideal, Harvard, Derby
30	156	“ Boys' (to order, incl. ½ sizes 3 to 5) ..	Ideal
35	356	“ Women's.....	Ideal, Opera, Vassar, Elite
35	456	“ Misses'.....	Ideal
35	556	“ Childs'.....	Ideal
13	2B	<b>BRITON</b> , Men's, 7" Black Leather Top .....	
13	102B	“ Boys'.....	
13	202B	“ Youths'.....	
18	13L	<b>BRUNSWICK</b> , Men's, Laced Perfection, Duck.....	
44	388	<b>BUTTON GAITER</b> , Women's, Cashmerette.....	Ideal
44	488	“ “ Misses' “ .....	Ideal
44	588	“ “ Childs' “ .....	Ideal
16	10	<b>CAPITOL</b> , Men's, 4 Eyelet, Laced Excluder, Duck....	
14	C2B	<b>CARIBOO</b> , Men's, 7" Top, " Red Seal " Bottom.....	
14	C4B	“ “ 9" “ “ “ “ .....	
14	C5B	“ “ 12" “ “ “ “ .....	
14	C7B	“ “ 16" “ “ “ “ .....	
42	84	<b>CARLTON</b> , Men's, 3 Eyelet, Gum.....	
42	184	“ Boys' “ .....	
42	284	“ Youths' “ .....	
11	B16	<b>CITY BOOT</b> , Men's, Light Pure Gum, Varnished....	
11	B116	“ “ Boys' “ .....	
12	B316	“ “ Women's, Watered Silk Leg.....	
12	B416	“ “ Misses' “ “ “ .....	
12	B516	“ “ Childs' “ “ “ .....	
34	76	<b>CLOG</b> , Men's, Self-Acting.....	Ideal
13	5B	<b>COBALT</b> , Men's, 12" Blk. Leather Top, Duck .....	
21	30	<b>COMFORT</b> , Men's, Lumberman's Cashmerette Excluder.....	
28	343	<b>COUNTESS</b> , Women's, Jersey Button Gaiter .....	Ideal, Elite
47	395	<b>CROQUET</b> , Women's.....	Roman, Ideal, Opera, Elite
47	395S	“ “ Spring Heel.....	Ideal
47	396	“ “ Fleece Lined.....	Ideal
47	495	“ Misses' Spring Ideal, Heel Opera and Ideal	
47	496	“ “ Fleece Lined.....	Ideal
47	595	“ Childs'.....	Ideal, Instructor
47	596	“ “ Fleece Lined.....	Ideal
21	41	<b>CURLER</b> , Men's, Frieze Lined.....	
26	44	<b>DUKE</b> , Men's, Jersey Arctic...Regal, Harvard, Derby	
13	4B	<b>EDWARD</b> , Men's, 9" Black Leather Top .....	
13	2T	<b>EMPEROR</b> , Men's, 7" Tan “ “ .....	
30	58	<b>EUREKA</b> , Men's, Rolled Edge Storm.....	Ideal
35	358	“ Women's “ “ .....	Ideal
32	68	<b>EXCELLO</b> , Men's, Soft Back.....	
43	85	..... Ideal, Regal, Ascot, Derby	
43	185	<b>EXCLUDER TWO BUCKLE</b> , Men's Cash- merette..Regular, Ideal	
43	86	“ “ “ “ Boys'.....	Ideal
43	86	“ <b>ONE BUCKLE</b> , Men's..Regular, Ideal	



# NAMES OF SHOES

## ALPHABETICALLY ARRANGED

Page	Sample No.	SHOE	Toe
32	66	<b>FAVORITE</b> , Men's.....	
		...Roman, Ideal, Regal, Yale, Harvard	
32	166	“ Boys' (to order, incl. ½ sizes 3 to 5).....	
		..... Harvard	
37	366	“ Women's.....Roman, Ideal, Grecian,	
		Opera, Boston, Vassar, Elite, Fashion	
37	367	“ Women's, Fleece Lined.....Opera	
37	466	“ Misses'.....Opera	
24	36	<b>FELT SHOE OVER</b> , Men's.....	
34	78	<b>FOOTHOLD</b> , Men's, White Net Lined.....Ascot	
39	378	“ Women's.....Elite, Vassar	
39	377	“ <b>FAIRY</b> , Women's, White Net Lined	
		.....Elite, Vassar	
15	7B	<b>FORESTER</b> , Men's, 16" Black Leather Top, Duck....	
10	B14	<b>GASPE</b> , Men's, Straight, Zero Net.....	
10	B15	“ Men's, R. and L. Zero Net.....	
13	4T	<b>GOVERNOR</b> , Men's, 9" Tan Leather Top, Duck.....	
20	33	<b>GRENFELL</b> , Men's, Gum Lumbermen's Excluder .	
34	77	<b>GRIPSOLE</b> , Men's, Self-Acting, Ideal, Harvard, Ascot	
45	90	<b>HIGH CUT OVER</b> , Men's.....Ideal	
45	190	“ “ “ Boys'.....Ideal	
45	390	“ “ “ Women's.....Ideal, Opera	
45	490	“ “ “ Misses'.....Ideal	
45	590	“ “ “ Childs'.....Ideal	
15	7T	<b>HUNTER</b> , Men's, 16" Tan Leather Top, Duck.....	
16	11	<b>HURON</b> , Men's, 2B High Perfection, Duck.....	
41	81L	<b>LACED PERFECTION</b> , Men's.....	
18	18	<b>LACEIT</b> , Men's, 3 Eyelet, Duck.....	
18	118	“ Boys' “ “ .....	
9	B13	<b>LEATHER SOLED BOOT</b> , Men's. Friction Lined..	
17	12	<b>LUMBERKING</b> , Men's, 3 Eyelet High, Duck.....	
17	13	<b>MACDONALD</b> , Men's Two Buckle, Duck.....	
17	113	“ Boys' One “ “ .....	
3	B2	<b>MACKENZIE</b> , Men's, Gum Hip Boot.....	
22	47	<b>MANITOBA</b> , Men's, 1B and 2 Straps.....Regular	
22	47R	“ <b>RAILROADER</b> , Men's Double	
		Sole.....Regular	
22	48	“ Men's, Three Buckles.....Regular	
47	398	<b>MATRON</b> , Women's, Low Heel .....	
19	24	<b>MINER</b> , Men's, 3 Eyelet, Protected Edge.....	
24	37	<b>MOCCASIN OVER</b> , Men's, Life-Buoy Brand.....	
45	93	“ “ Rubber-Leaf Brand.....	
45	193	“ “ Boys' “ “ .....	
36	371	<b>MYRTLE</b> , Women's, Toecap.....Ideal, Opera	
43	83	<b>NATIONAL</b> , Men's, One Buckle Low.....	
43	183	“ Boys' “ “ “ .....	
43	283	“ Youths' “ “ “ .....	
7	B9	<b>NIPISSING</b> , Men's, Short Boot with Protected Edge	
31	62	<b>PARAGON</b> , Men's, Rolled Edge Self-Acting....Ideal	
37	372	<b>PEARL</b> , Women's, Fancy Upper.....Ideal, Opera	
27	43	<b>PEARY TWO BUCKLE</b> , Men's, Jersey Excluder	
		.....Ideal	
27	46	“ <b>ONE BUCKLE</b> , Men's, Jersey Excluder	
		.....Ideal	
42	81	<b>PERFECTION TWO BUCKLE</b> , Men's.....	
42	181	“ “ “ Boys'.....	
42	82	“ <b>ONE BUCKLE</b> , Men's.....	
42	182	“ “ “ Boys'.....	
42	282	“ “ “ Youths'.....	
20	22	<b>PILGRIM</b> , Men's, Two Buckle, Rolled Edge, Gum...	
46	95	<b>PLAIN OVER</b> , Men's.....Regular, Ideal	
46	195	“ “ “ Boys'.....Ideal, Harvard	
46	295	“ “ “ Youths'.....Ideal	

## NAMES OF SHOES ALPHABETICALLY ARRANGED

Page	Sample No.	SHOE	Toe
46	96	<b>PLAIN OVER FLEECE</b> , Men's	Ideal
46	196	“ “ “ Boys'	Ideal
46	296	“ “ “ Youths'	Ideal
23	50	<b>QUEBEC</b> , Men's, Rolled Edge, Arctic	Regular
28	342	<b>QUEEN</b> , Women's, High Jersey Overshoe	Ideal, Elite
23	52	<b>RAILROADER, TWO BUCKLE</b> , Men's	Regular
23	53	“ <b>ONE</b> “	Regular
22	47R	<b>RAILROAD MANITOBA</b> , Men's	Regular
31	60R	“ <b>TEMPEST</b> , Tap and Heel, Heavy Upper	Ideal
19	23	<b>RANGER</b> , Men's One Buckle, Protected Edge	Regular
33	71	<b>RELIANCE</b> , Men's, Toecap. Soft-Back	Regal
17	14	<b>RIDEAU</b> , Men's, Fleece Lined Perfection, Duck	Regular
27	45	<b>ROSSEAU</b> , Men's, Jersey Arctic, Buckle Behind	Regal
6	B8	<b>RUPERT</b> , Men's, Duck Vamp Boot, Rolled Edge	Regular
46	98	<b>SAXON OVER</b> , Men's, W. W.	Regular
13	5T	<b>SENATOR</b> , Men's, 12" Tau Leather Top, Duck	Regular
24	40	<b>SERVICE</b> , Men's, Rolled Edge	Ideal
24	140	“ Boys', “	Ideal
24	240	“ Youths', “	Ideal
24	340	“ Women's, “	Ideal
24	440	“ Misses', “	Ideal
24	540	“ Childs', “	Ideal
8	B10	<b>SHORT BOOT</b> , Men's, Friction Lined	Regular
8	B11	“ “ “ Zero Net Lined	Regular
8	B12	“ “ “ Frieze Lined	Regular
8	B110	“ “ Boys', Friction Lined	Regular
8	B210	“ “ Youths', “	Regular
9	B13	“ <b>LEATHER SOLE</b> , Men's, Friction Lined	Regular
40	B10X	<b>SHORT BOOT, SPECIAL</b> , Men's, Friction Lined	Regular
41	80	<b>SIMCOE</b> , Men's, Extra High 2B Perfection	Regular
4	B4	<b>SPORTING</b> , Men's, Light Rolled Edge Boot	Regular
29	354	<b>STOCKING OVER</b> , Women's	Ideal
29	454	“ Misses'	Ideal
29	554	“ Childs'	Ideal
5	B5	<b>STORMKING</b> , Men's, Friction Lined	Regular
5	B105	“ Boys', “	Regular
6	B6	“ Men's, Frieze “	Regular
34	74	<b>STRAP SANDAL</b> , Men's, White Net Lined	Regal
38	374	“ “ Women's, “ Opera, Vassar	Regular
31	60	<b>TEMPEST</b> , Men's, Fine Storm	Regular
31	61	“ “ “ Ideal, Regal, Harvard, Derby	Regular
31	59	“ <b>FLEECE LINED</b> , Men's	Ideal
31	60R	“ <b>CLOSED SIDES</b> , Men's	Ideal
36	360	“ <b>RAILROAD SOLE</b> , Heavy Upper	Ideal
36	361	“ Women's	Ideal, Opera, Boston, Vassar, Elite
36	359	“ <b>FLEECE LINED</b> , Women's	Opera
31	63	“ <b>CLOSED SIDES</b> , Women's	Ideal
20	32	<b>TEUTON</b> , Men's, Rolled Edge, Soft-Back	Ideal
20	132	<b>TROJAN ONE BUCKLE</b> , Men's, Cloth Quarter, Gum Vamp	Regular
20	31	<b>TROJAN ONE BUCKLE</b> , Boys' Cloth Quarter, Gum Vamp	Regular
29	348	<b>TROJAN TWO BUCKLE</b> , Men's (to order)	Regular
29	448	<b>VICTORIA</b> , Women's, Two Buckle Excluder	English, Ideal
29	548	“ Misses' Two Buckle Excluder	Ideal
14	3	“ Childs' “ “	Ideal
14	1	<b>YAMASKA</b> , Men's, 7" Black Leather Top, Gum	Regular
3	B1	<b>YEOMAN</b> , Men's, Low Laced, “ “	Regular
33	75	<b>YUKON</b> , Men's, Duck Hip Boot	Regular
38	375	“ <b>ZEPHYR</b> , Men's Self-Acting, Regal, Model, Harvard	Regular
		“ Women's	Elite, Vassar, Fashion

## **BRANCH ADDRESSES**

**Vancouver, B. C. :**

**THE KAUFMAN RUBBER CO., Limited**  
**41 Alexander Street**  
**F. & F. HENDERSON**

**Winnipeg :**

**GEORGE G. LENNOX**  
**87 King Street**

**Toronto :**

**THE KAUFMAN RUBBER CO., Limited**  
**76 York Street**  
**L. B. HUTCHISON, Manager**

**Ottawa :**

**THE KAUFMAN RUBBER CO., Limited**  
**281 Wellington Street East**  
**E. E. CODE, Manager**

**Montreal :**

**THE KAUFMAN RUBBER CO., Limited**  
**310 Craig Street West**  
**J. J. DUGGAN, Manager**

**Fredericton, N. B. :**

**THE KAUFMAN RUBBER CO., Limited**  
**O. J. KILLAM, Manager**

**Truro, N. S. :**

**THE KAUFMAN RUBBER CO., Limited**  
**O. J. KILLAM, Manager**

**Charlottetown :**

**THE CHARLOTTETOWN RUBBER CO.**  
**Charlottetown, P.E.I.**

**SORTING ORDERS DIRECTED TO ABOVE ADDRESSES**  
**WILL RECEIVE PROMPT ATTENTION**



THE REID PRESS, LIMITED  
HAMILTON, CANADA