

WATCHES
DIAMONDS
JEWELRY
AND
SILVER
WARE

A. W. SMITH & SONS,
OFFICIAL AGENTS FOR REGINA WATCHES,
GUELPH, ONT.



1910-1920



PEACE YEAR CATALOGUE

WE take great pleasure in sending you this copy of our Catalogue. We have published this book to show what a variety of attractive articles you can obtain from the jewellery store in your own district. We have illustrated in this catalogue not only those articles which we carry in stock but several lines of goods which we can obtain very quickly from the manufacturers. We also carry a large variety of goods in stock which we have not illustrated here. We want you to realize the possibilities of our shop and to co-operate with us in purchasing your requirements locally. We hope that you will visit our store and personally inspect our stock; we are confident that we can satisfy you both as to quality and to price. There is no necessity for you to send away to outside points. If we have not got what you require we can quickly obtain it. Our connection with several large manufacturing and importing houses places us in immediate touch with the largest markets of the continent. We are here at your door, personally responsible for every article that we sell, not only at the time of purchase, but afterwards. OUR ACCESSIBILITY IS YOUR GUARANTEE.

COME IN AND SEE US



REGINA WATCHES

"Regina Watches" are made in Biel, Switzerland, in one of the most up-to-date watch factories in the world.

"Regina Watches" are machine-made, and have every part interchangeable, making the replacing of any part extremely simple.

"Regina Watches" are hand-polished throughout, thus ensuring the least possible friction as well as the utmost perfection of finish.

"Regina Watches" received the highest awards at the Geneva, Brussels, Paris and Milan Expositions.



We are exclusive agents
for REGINA WATCHES
for this district.



12 size open face Regina "Par"
quality gold-filled case, screw back
and bezel, fitted with
101—Regina 7-jewel move-
ment..... \$19.50
102—Regina 15-jewel move-
ment..... 22.25
103—Regina 17-jewel move-
ment..... 26.50
Case—Plain, engine-turned or en-
graved.



12 size open face Regina "Ultra"
quality gold-filled case, screw back
and bezel, fitted with
104—Regina 7-jewel move-
ment..... \$21.75
105—Regina 15-jewel move-
ment..... 23.50
106—Regina 17-jewel move-
ment..... 28.00
Case—Plain, engine-turned or en-
graved.

16 size open face Regina "Par"
quality gold-filled case, screw
back and bezel, fitted with
107—Regina 7-jewel move-
ment..... \$18.50
108—Regina 15-jewel move-
ment..... 21.25



109—Regina
17-jewel
movement \$25.50
Case—Plain, en-
gine-turned or en-
graved.



Cost of
engraving
monograms,
extra.

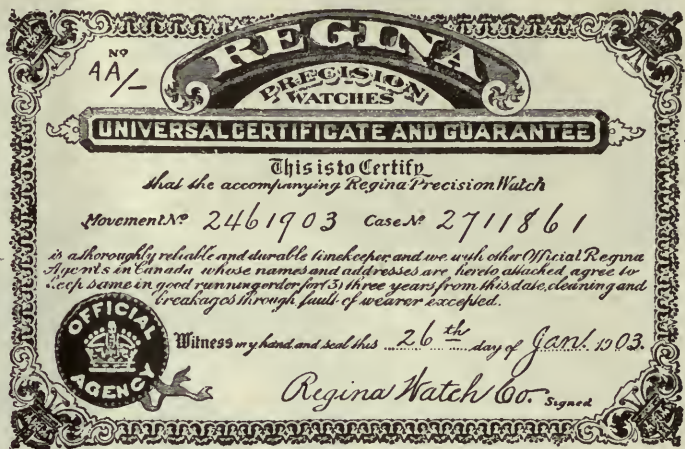
16 size open face Regina "Ultra" quality gold-filled
case, screw back and bezel, fitted with
110—Regina 7-jewel movement..... \$20.50
111—Regina 15-jewel movement..... 23.25
112—Regina 17-jewel movement..... 27.50

16 size open face Regina "Ultra" quality gold-filled,
jointed case, fitted with
113—Regina 7-jewel movement..... \$22.00
114—Regina 15-jewel movement..... 24.75
115—Regina 17-jewel movement..... 29.00

Cases—Plain, engine-turned or engraved.

REGINA WATCHES

A guarantee, as illustrated, is furnished with every Regina Watch. No other watch sold in Canada carries as strong or broad a guarantee. This guarantee is in the form of a book and contains the names of 450 leading Canadian jewellers, each one exclusive agent for Regina Watch for his district. They, with us, guarantee that every Regina Watch is a thoroughly reliable and durable time-keeper and will keep same in good running order for 3 years. (Cleaning and breakages through fault of owner, excepted.)



12 size Regina thin model, "Ultra" quality gold-filled case, jointed back, snap bezel, with

- 116—Regina 15-jewel movement..... \$25.50
- 117—Regina 17-jewel movement..... 29.75

Above prices include a beautiful presentation box.

We are Exclusive Agents for Regina Watches for this District



12 size Regina "Octagon" Watch—High grade imported gold-filled case with

- 118—Regina 15-jewel movement..... \$31.75
- 119—Regina 17-jewel movement..... 36.00

This is an exclusive "Dress" design.



3/0 size Regina 15-jewel Strap Bracelet Watch

- 120—Silver case..... \$22.50
- 121—Gold-filled..... 24.25

Radium dial and hands \$3.50 extra.

The Strap Watch is here to stay. Every man should have one.



122—Waltham, 14 size. "Colonial Series." Riverside 19-jewel movement, adjusted to 5 positions, in "Crescent" gold-filled, open face, double-jointed case with cap.

\$72.00

Lack of space prevents us from showing more watches. Come in and look over our stock. We have a splendid variety.



123—Omega, 12 size, high grade D.D. movement, 21-jewel, adjusted to 5 positions, temperature and isochronism, in gold-filled Sovereign jointed case.

\$45.00



124—Hamilton, 16 size Railroad Watch No. 992. 21 jewels, adjusted to 5 positions, temperature and isochronism. In gold - filled Sovereign screw back and bezel case.

\$62.00

For illustrations and prices of Watch Chains, both double and single vest styles, see pages seven, twelve and thirteen.



125—"Civic," 16 size Workman's and Farmer's Watch. 15-jewel Civic movement, in heavy silver case. Screw back and bezel case.

\$14.25

Radium dial and hands, \$3.50 extra.



126—2/0 size Omega Cushion-shape Strap Watch. Silver case, fitted with 15-jewel movement.

\$32.00

We have not been able to illustrate our complete Watch line. We have both HIGHER PRICED and LOWER PRICED WATCHES in our stock.

LADIES' BRACELET WATCHES

We illustrate here an unusually attractive assortment of Bracelet Watches. The movements have been selected as especially reliable. The cases are all of the latest designs.



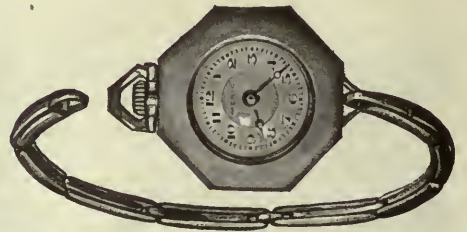
Round Bracelet Watch

10 ligne, 15-jewel Champ. movement.

	Round	Convertible
127—Banner, gold-filled .	\$20.25	\$21.00
128—14-karat, solid gold..	35.00	36.00

Dainty expanding bracelet—easily snapped on and off.

Convertible Bracelet Watches
 Are those illustrated below with winding at figure 12. By removing bracelet it can be used as a regular watch.



Octagon Bracelet Watch

10 ligne, 15-jewel Champ. movement.

	Round	Convertible
129—Banner, gold-filled..	\$24.75	\$25.50
130—14-karat, solid gold..	37.75	38.50

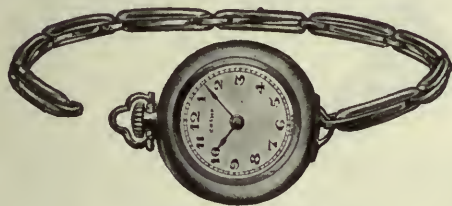
Complete with Expanding Bracelet.



Round Ribbon Bracelet Watch

10 ligne, 15-jewel Champ. movement. Adjustable ribbon.

131—Banner, gold-filled.....	\$20.25
132—14-karat solid gold.....	35.00



Round Bracelet Watch

9 ligne, 15-jewel Champ. movement. Complete with Expanding Bracelet.

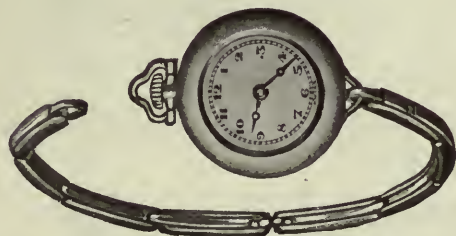
	Round	Convertible
133—Banner, gold-filled...	\$22.50	\$23.25
134—14-karat, solid gold..	36.50	37.25



Octagon Bracelet Watch

9 ligne, 15-jewel Champ. movement. Complete with Expanding Bracelet.

	Round	Convertible
135—Banner, gold-filled...	\$24.75	\$25.50
136—14-karat, solid gold..	38.25	39.00



137—Round Bracelet Watch. 10 ligne, 15-jewel "Patria" movement. Complete with Expanding Bracelet. Alpha, gold filled.

\$16.50



138—Round Convertible Bracelet Watch with disappearing eye. 3/0 size, 7-jewel Waltham movement.

\$23.00

By removing bracelet, closing the "eye," the bracelet head is converted into regular watch.

RINGS

BEAUTIFUL DIAMOND SET RINGS

Diamonds are essentially articles demanding individual selection. We are therefore only illustrating a few designs. Come in and see us and make your selection of the stones and the designs that you prefer.



No. 139



No. 140



No. 141



No. 142



No. 143



No. 144



No. 147



No. 146



No. 145

SOLITAIRE DIAMOND RINGS

In 14k. solid gold and white gold and platinum mountings. Prices from \$25.00 up.

Fancy Diamond Rings and Clusters at popular prices.



WEDDING RINGS

"English" Design

No. 148—18k. . . . \$9.00

No. 149—18k. . . . 7.50



No. 148

No. 149



GENTLEMEN'S STONE RINGS

No. 150—S.C. Ruby
10k. \$8.50

No. 151—Ruby
10k \$9.90



SIGNET RINGS

Finely modeled Rings of the latest design. Illustrations actual size.



No. 152
2261

Plain Signet
10k., about \$6.00



No. 153
2211

Fluted Signet
10k., about \$9.50



No. 154
2201

Scroll Signet
10k., about \$8.00



No. 155
2390

Grooved Signet
10k., about \$9.50



No. 156
924

Boys' Plain Signet
10k., about \$5.50

Our Signet Rings are especially designed for engraving.

CHILDREN'S AND BABY RINGS



No. 157—\$1.60
10k. Buckle Ring



No. 158—\$1.50
10k. Child's Stone Set, Pearl or Garnet



No. 159—\$1.50
10k. Baby Ring



No. 160—\$1.40
10k. Band Ring



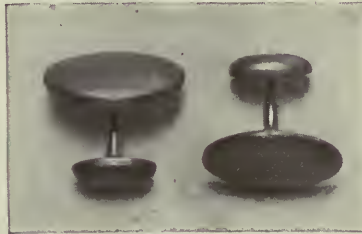
No. 161—\$1.40
10k. Band Ring

GENTLEMEN'S SOLID GOLD JEWELLERY

Solid 10-karat Gold Cuff Links—These are strong and substantial links for both soft and starched cuffs. The plain links have been selected as especially suitable for engraving.



162—Loose link, domed \$4.50

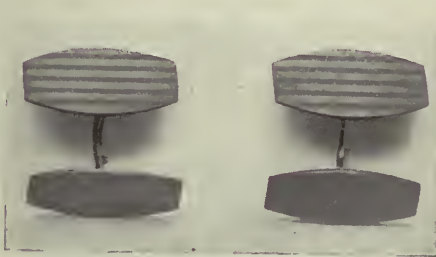


163—Domed \$4.50

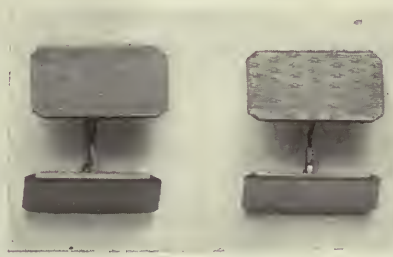


164—Loose link \$4.50

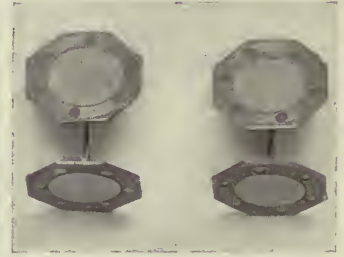
BEAUTIFUL ENGINE-TURNED DESIGNS



165—Loose link \$7.65



166—Loose link \$6.75



167—Loose link \$6.30



168

169

170

171

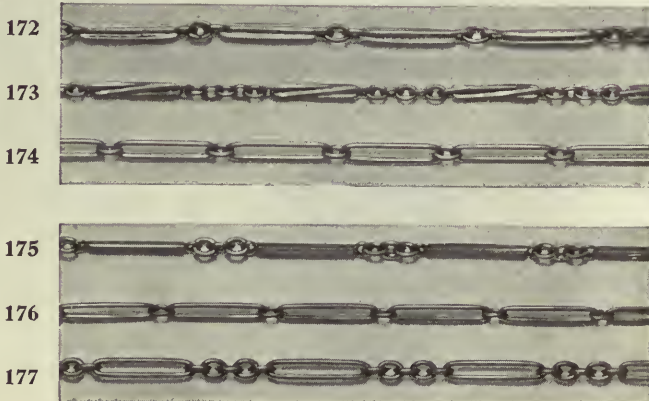
TIE PINS

Solid 14-karat gold, set with Pearls in plain attractive designs.

168.....	\$4.50
169.....	4.50
170.....	5.75
171.....	4.50

10 KARAT WALDEMAR CHAINS

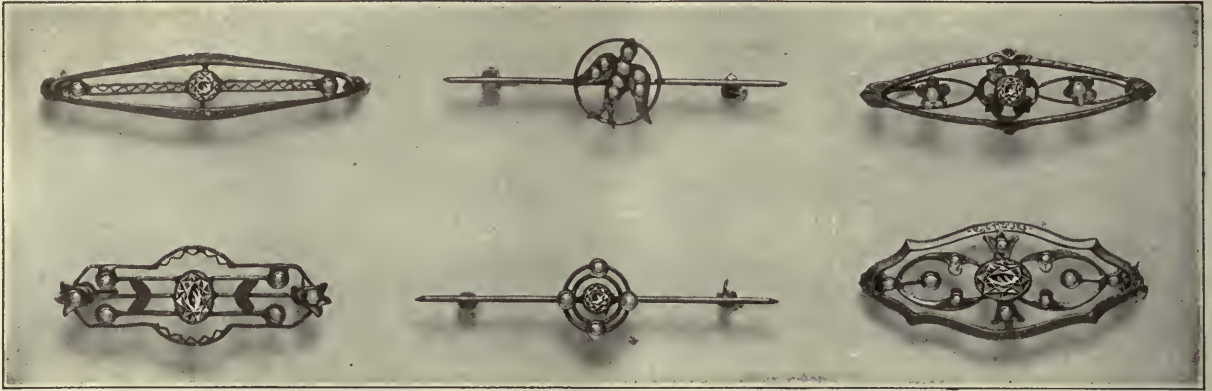
A TWO-POCKET CHAIN OF GREAT POPULARITY. The "Waldemar" is the most convenient chain for a gentleman. It is not only useful for securing his watch, but a ring on the reverse end permits his carrying a knife, cigar cutter, pencil, etc., in his other pocket.



172.....	\$16.50
173.....	15.00
174.....	12.50
175.....	14.50
176.....	11.50
177.....	13.50

Length of chain 12 inches.

DAINTY DESIGNS IN SOLID GOLD JEWELLERY



Solid 14 Karat Gold Brooches—New designs of splendid workmanship, set with real Pearls and "Electric" Fancy Stones.

No. 183—Amethyst and Pearls
\$12.00

No. 181—Pearls, \$8.75

No. 179—Sapphire and Pearls
\$11.50

No. 182—Peridot and Pearls
\$15.75

No. 180—Amethyst and Pearls
\$11.00

No. 178—Peridot and Pearls
\$15.00



SOLID 14 KARAT GOLD CRESCENT BROOCHES, set with real Pearls.

No. 184—\$4.50

No. 185—\$5.00

No. 186—\$8.00

No. 187—8.00



SOLID 14 KARAT GOLD WISHBONE BROOCHES

No. 190—Plain Roman Finish.....\$4.50

No. 191—Set with 5 Pearls..... 8.00



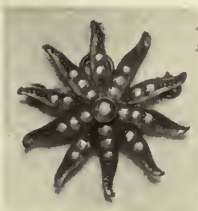
No.—188

CAMEO BROOCHES

Beautiful Pink Shell Cameos carved by the most skillful cutters, set in solid 10 karat gold brooches with simple rope design.

No. 188—\$20.75

No. 189— 16.00



No. 192—\$14.25

PEARL SUNBURSTS

Perhaps the most popular design of all gold brooches. We can supply these in several sizes. Prices ranging from \$10.00 to \$25.00.



No.—189



193

194

195

196

197

SOLID 14-KARAT GOLD PENDANT NECKLETS

Illustrations actual size.

Stones are real pearls and electric fancy stones.

193—Set with Pearls
\$10.00

194—Set with
Peridot and Pearl.
\$12.50

195—Set with
Sapphire and Pearl.
\$10.00

196—Set with
Amethyst \$14.50

197—Set with
Pearls \$10.75



198—Diamond and
Pearl Pendant with
Chain. 14-karat,
pierced rose setting.
Mill grained circle.
\$27.00



199—Diamond and
Pearl Pendant with
Chain. 14-karat,
pierced rose setting.
Mill grained square.
\$30.60



200—Diamond and
Pearl Pendant with
Chain. 14-karat,
pierced rose setting.
\$22.50



201

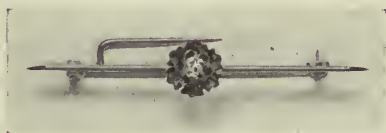


202

SOLID GOLD LOCKETS—These lockets will open and have place for two pictures. Prices vary according to weight:—

201—10-karat,
about \$11.75

202—10-karat,
about \$9.50



203—Diamond-set, 14-karat, knife-edged Bar Pin,
pierced rose setting \$18.00



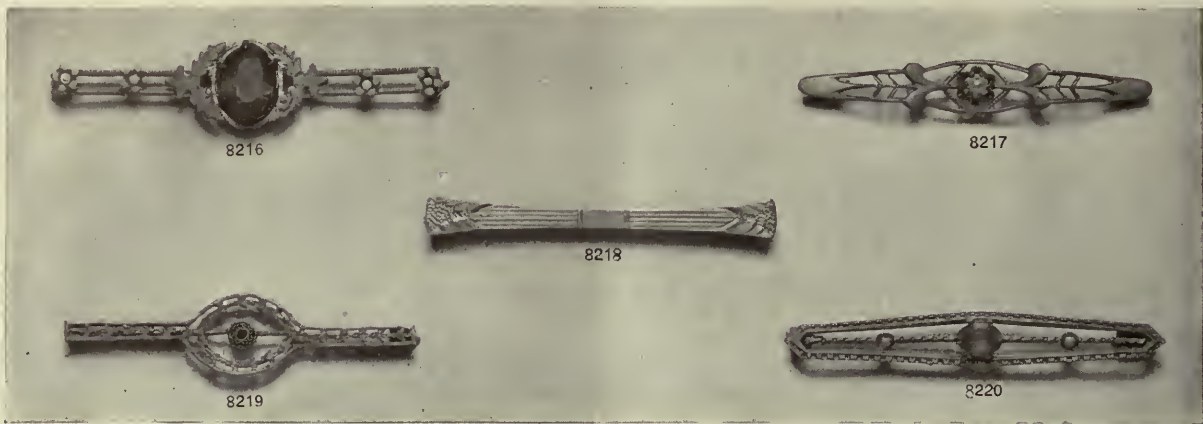
204



205

Solid 10-karat Gold Crosses, Roman finish.

204..... \$5.20
205..... 3.00



8216

8217

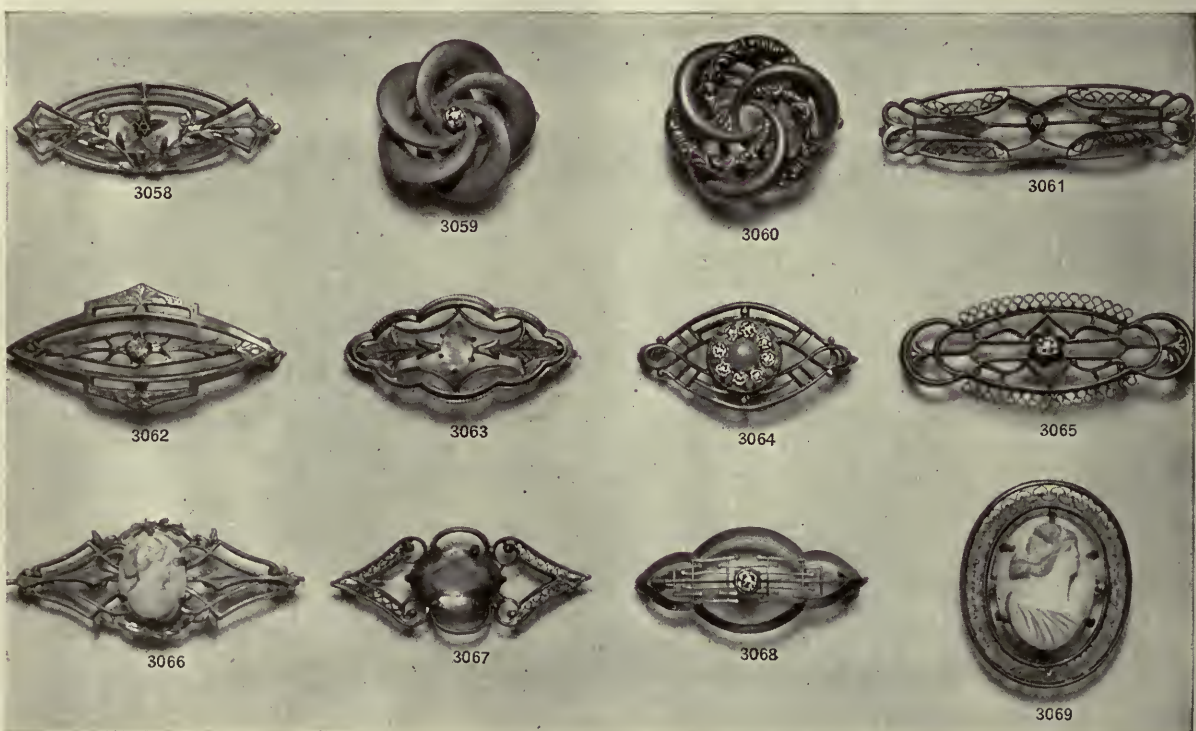
8218

8219

8220

FINE GOLD-FILLED BAR PINS—New and attractive designs, always popular and useful; these are copies of solid gold patterns and are practically equal to them in workmanship and finish. Selected imitation stones.

- No. 8216—English finish, set with Ruby \$1.20
- No. 8217—Bright finish, Pearl set \$1.20
- No. 8219—Rose finish, set with Aquamarine 2.45
- No. 8220—Roman finish, set with Aquamarine and Pearls 2.10
- No. 8218—Bright finish, hand engraved in neat design. 2.60



3058

3059

3060

3061

3062

3063

3064

3065

3066

3067

3068

3069

FINE GOLD-FILLED BROOCHES—Beautiful designs, as finely made as solid gold goods; having the same delicate pierced effects and carefully selected imitation stones.

- 3058—English finish, White Wreath, set with Aquamarine \$2.25
- 3059—Roman finish, set with Sapphire 2.25
- 3060—Roman finish 2.70
- 3061—English finish, set with Aquamarine 2.15
- 3062—English finish, set with Tourmaline 2.25
- 3063—Bright finish, set with Amethyst 2.35
- 3064—English finish set with Pearl and White Stones 2.35
- 3065—English finish, set with White Stone \$2.35
- 3066—Roman finish, set with Genuine Pink Cameo 2.20
- 3067—English finish, set with Pink Tourmaline 2.60
- 3068—English and White finish, set with Sapphire 2.70
- 3069—Roman finish, beautiful pierced border, set with genuine Pink Cameo 4.85



B. 4027

MOURNING BROOCHES
B. 4027 \$1.55



208—\$4.55

209—\$2.95

210—\$4.95

211—\$2.60

212—\$3.60

FINE GOLD-FILLED NECKLETS

Beautiful reproductions of solid gold designs. Stones are finest imitation.

GOLD-FILLED JEWELLERY



213—Oval Locket
\$2.85



214—Round Locket
\$2.10



215
Oblong Locket
\$2.85



217
Baby Locket
\$0.90



219
Baby Locket
\$2.05



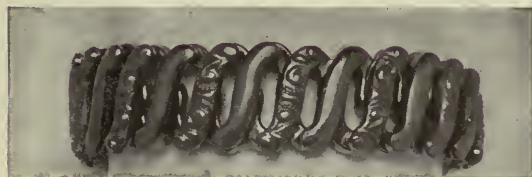
216
Black Earrings
Per pair \$1.35



218
Earrings
Per pair \$1.10



220
Black Earrings
Per pair \$1.35



221—Expanding Bracelet..... \$2.10



222
Cross
\$1.10



2635

2639

2643

2647

2651

2655

2659

Handy and Baby Pins—
Handy to have and pretty to wear. These pins are attractively finished and will give good service.

- 2635—Roman finish. \$0.45
- 2639—Hand engraved .45
- 2643—Roman, set with pearl..... .70
- 2647—Set with 3 pearls..... .70
- 2651—Hand engraved 1.10
- 2655—English finish. .70
- 2659—Black..... .40

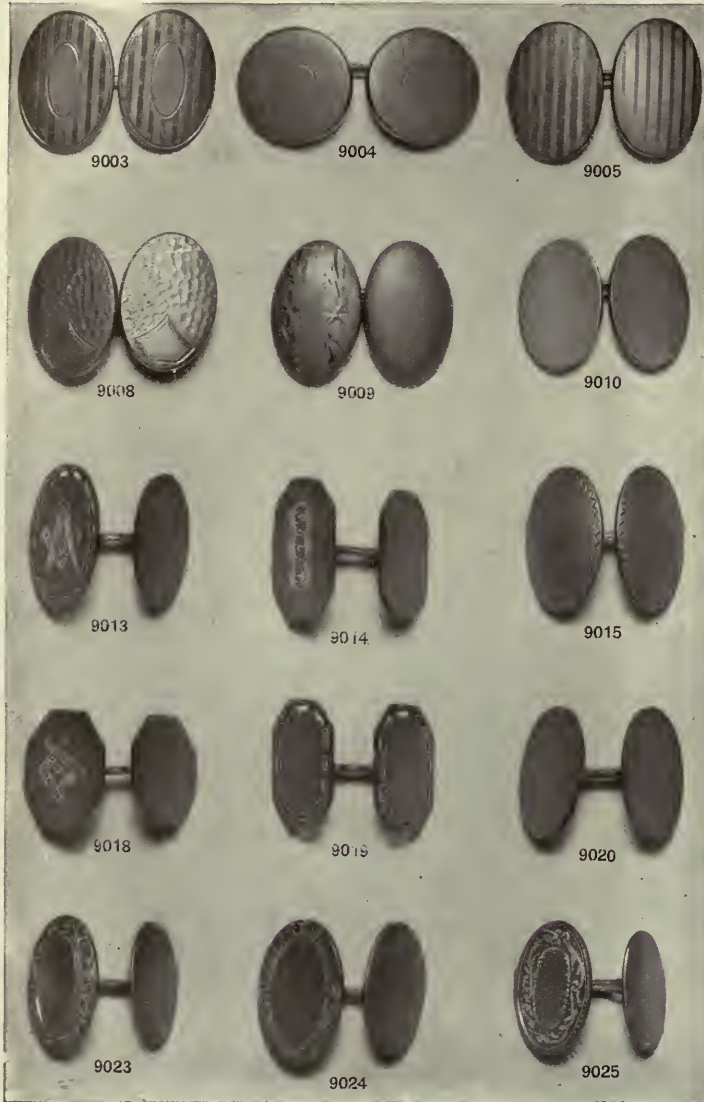
FINE GOLD-FILLED JEWELLERY FOR MEN

GOLD-FILLED LINKS

Illustrations actual size.

Finely made and finished. Plain engine turned, engraved and hammered designs.

- 9003—English finish, engine-turned . . . \$1.10
- 9004—English finish, engine-turned80
- 9005—English finish, engine-turned . . . 3.85
10k. gold fronts with gold-filled connecting link.
- 9008—Roman finish, hammered design .80
- 9009—Roman finish, hand engraved . . . 2.90
- 9010—English finish75
- 9013—Roman finish, Masonic or Odd Fellows \$4.05
- 9014—Roman finish, Masonic or Odd Fellows \$4.05
- 9015—Roman finish 2.15
- 9018—Roman finish, Masonic 4.05
- 9019—Roman finish 2.15
- 9020—Plain Roman finish 2.15
- 9023—Bright finish, hand engraved . . . 3.90
- 9024—Bright finish, hand engraved . . . 3.85
- 9025—Roman border, bright centre . . . 4.00



224—Pencil \$2.10
Fancy engine-turned design.

225 Knife \$2.60
Roman finish, bright shield.

WALDEMAR CHAINS

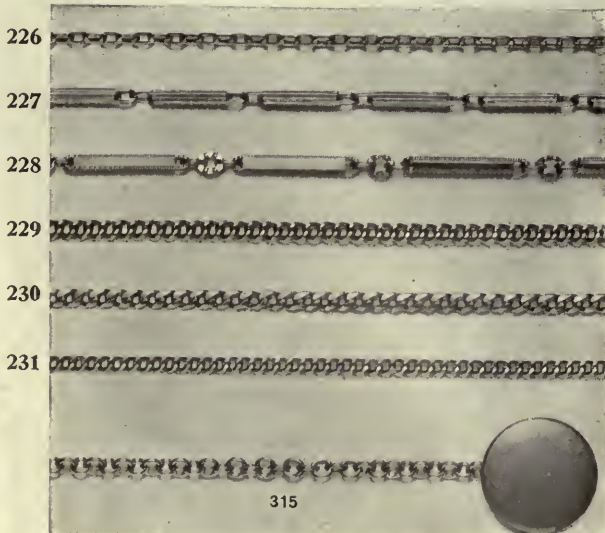
The most popular chain for a man—a two pocket chain with a swivel on one end for a watch, and a spring ring on the other for a knife, pencil, etc.

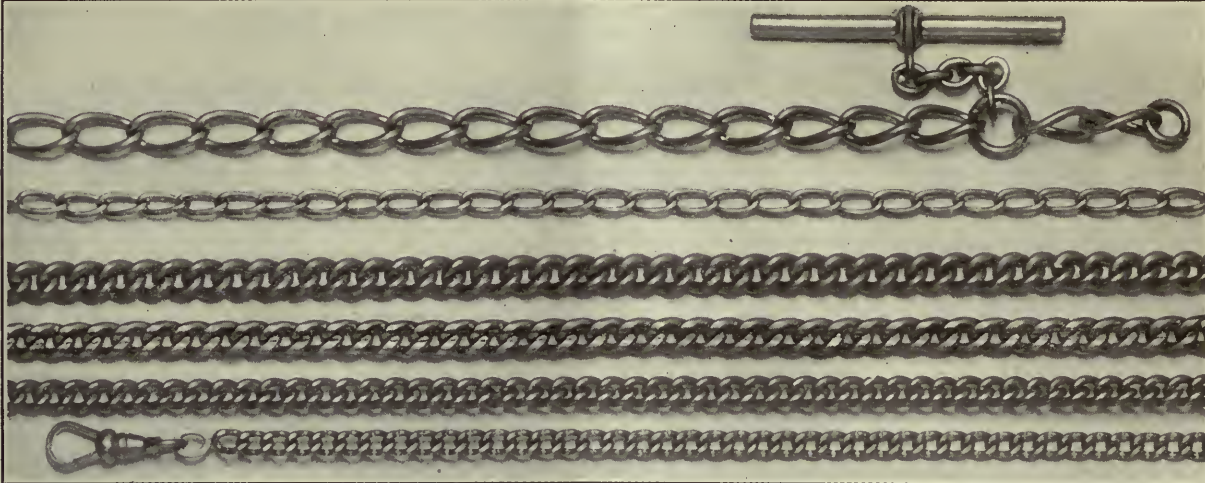
- 226—\$1.70
- 227— 2.70
- 228— 2.70
- 229—\$1.75
- 230— 1.95
- 231— 2.15

COAT OR LAPEL CHAIN

Button goes through buttonhole in lapel and watch is carried in outside pocket.

315—\$1.70





SOVEREIGN GOLD-FILLED CHAINS

This is an excellent line of chains of the very highest quality. These are all "Alberts" or single vest chains, to be used from watch pocket to vest buttonhole.

No. 232—\$5.70
No. 233— 5.75

No. 234—\$6.90
No. 235— 6.90

No. 236—\$5.50
No. 237— 4.95

HIGH QUALITY GOLD-FILLED RINGS

Stones are the very finest imitations.



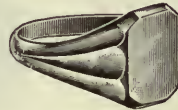
No. 238—\$2.25
Gentleman's Ring
Carbuncle Garnet



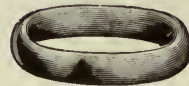
No. 239—\$1.80
Gentleman's Ring
Topaz Wesselton
Jewel



No. 240—\$2.00
Gentleman's Ring
Ruby



No. 241—\$1.60
Gentleman's Ring
Plain Signet



No. 242—\$1.10
Wedding Ring

State size required when ordering.



2076



2084



2092



2100

GOLD-FILLED SCARF PINS

in attractive designs.
Stones are the finest imitations.

2076.....\$0.80

2084..... .90

2092..... 1.10

2100..... .65



GOLD-FILLED TIE CLIPS

Plain and dignified.

2460..... \$0.90

2461..... .65



243A—Gold-Filled Soft Collar Pin. Length
1½ inches.....\$0.35

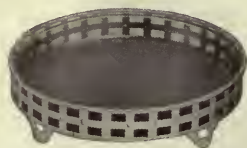


243B—Same, length 1¼ inches...\$0.30



244—Bull Dog Scarf Pin Grip—
Cannot be removed unless knob
is pulled out. Will absolutely
prevent loss of your scarf
pin.....\$0.50

STERLING TABLE SILVER



245—Butter, or Lemon Dish
\$8.10
Removable glass lining.
Diameter 4½ inches.



246—Mayonnaise or Whipped Cream Bowl \$14.60



247—Bon Bon Dish
\$7.00
Graceful pierced border.
Diameter 4½ inches.



248—Napkin Ring.
1 inch wide, \$3.85



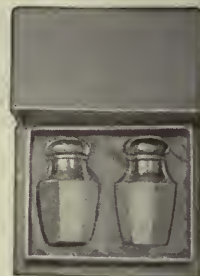
249—Child's Cup.
Gold-lined, \$8.55



250—Salt and Pepper Shakers in silk-lined box.
Complete, \$3.90



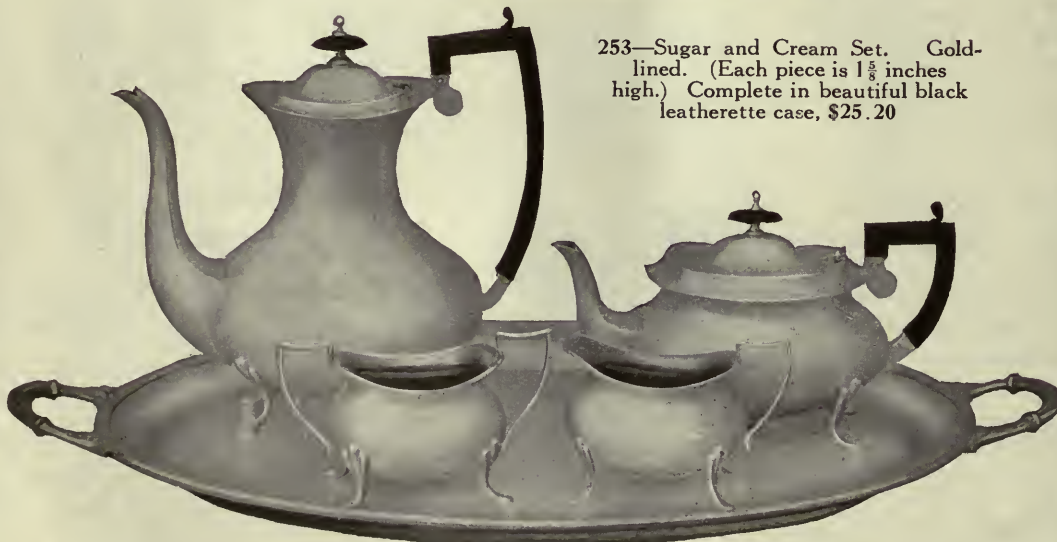
253—Sugar and Cream Set. Gold-lined. (Each piece is 1⅝ inches high.) Complete in beautiful black leatherette case, \$25.20



251—Salt and Pepper Shakers. "Colonial Design", in silk-lined box. Complete, \$5.00



254
Candlestick.
\$5.05 each.
Electro silver plate on nickel.



"LANCASTER" PATTERN TEA SERVICE

255—Tea Pot, capacity 2 pints.....	\$89.90
256—Coffee Pot, capacity 3 pints.....	119.90
257—Sugar Basin.....	35.80
258—Cream Pitcher.....	29.95
259—3-piece Set (Tea, Sugar and Cream).....	156.65
260—4-piece Set (Tea, Coffee, Sugar, Cream).....	275.55

	Silver Plate
	(E.P.N.S.)
	\$31.95
	44.10
	12.90
	10.35
	55.20
	99.30

252	Sugar Dredger.
	5 inches high.
	Sterling Silver
	\$12.35
	Silver Plate
	(E.P.N.S.)
	\$3.40

"SOVEREIGN PLATE"

ELECTRO SILVER PLATE ON NICKEL SILVER



262—Butter Dish.
Diameter 6½ inches.
Removable glass lining.
\$3.50

E. P. N. S.

These initials stamped on silver-plated goods stand for Electro Plate on Nickel Silver. Nickel silver is a hard white metal. Any E.P.N.S. Tableware will ring like a bell if struck with a pencil, etc.

E.P.N.S. Tableware is more expensive than electro plate on Britannia (soft) metal, but will outlast it many times over.



263—Gravy Boat and Tray, \$9.55
Boat only, \$6.55



264—Round Vegetable Dish
\$19.00

Diameter 9 inches.

The top may be reversed and used as a dish also.



265—Muffin Dish \$12.85
Diameter 7½ inches

Has hot water compartment formed by a removable "false bottom." This may be taken out, thus making a deeper dish.



266—Oval Entree or Vegetable Dish
\$25.00

11 inches long.

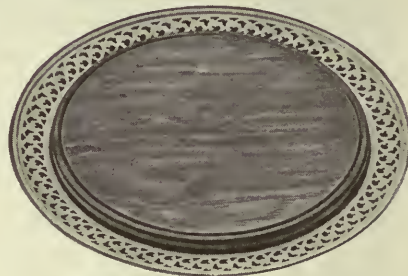
The cover can be used as an extra dish if necessary.



267—Sandwich or Cake Plate, \$6.85
Diameter 10 inches.



268—Child's Cup.
Gold-lined.
\$3.95

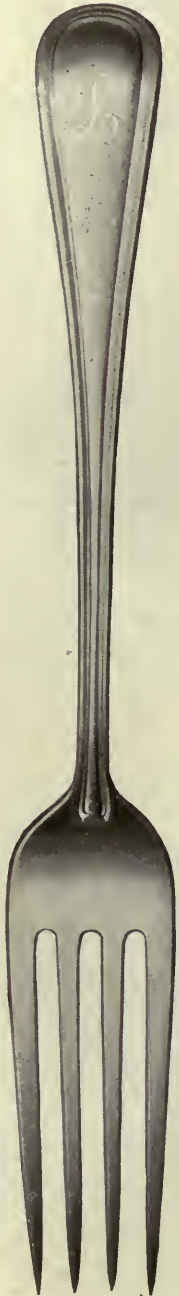


269—Bread Board, \$5.20
Diameter 9½ inches.
Solid oak centre with pierced silver-plated border.



270—Bread Tray, 13 inches long, \$7.00

STERLING SILVER FLATWARE



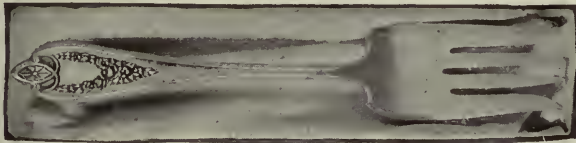
"NORMAN" PATTERN

A plain pattern of graceful contour and pleasing proportions.

Teaspoons, small.....	\$18.60 doz.	Berry Spoon.....	\$8.55 ea.
Teaspoons, large.....	27.60 "	Sugar Spoon.....	3.90 "
Dessert Spoons.....	49.20 "	Cold Meat Fork.....	6.85 "
Table Spoons.....	67.20 "	Pickle Fork.....	4.30 "
Soup Spoons.....	49.20 "	Butter Knife.....	2.70 "
Dessert Forks.....	49.20 "	Butter Spreads.....	43.20 doz.
Table Forks.....	64.20 "	Cream Ladle, small.....	3.80 ea.
Dessert Knives, hollow handles, plated blades.....	45.60 "	Gravy Ladle.....	7.85 "
Table Knives, hollow handles, plated blades.....	54.00 "	Pie Server, hollow handle, plated blade.....	5.10 "
		Sugar Tongs.....	4.15 "

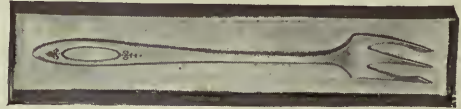
TABLE-WARE FOR GIFTS

STERLING SILVER AND SILVER PLATE



Cold Meat Fork, in Box

- 271—"Norman" Sterling Silver..... \$7.25
- 272—"Old Colony" 1847 Plate..... 1.50
- 273—"Adam" Community Plate..... 2.00



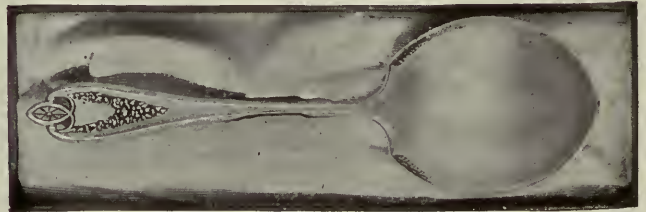
Pickle Fork, Long, in Box

- 275—"Old Colony" 1847 Plate..... \$1.25
- 276—"Adam" Community Plate..... 1.25



Sugar Shell, in Box

- 286—"Norman" Sterling Silver..... \$4.30
- 287—"Old Colony" 1847 Plate..... 1.15
- 288—"Adam" Community Plate..... 1.25



Berry Spoon, in Box

- 280—"Norman" Sterling Silver..... \$9.15
- 281—"Old Colony" 1847 Plate..... 2.50
- 282—"Adam" Community Plate..... 3.00



Butter Knife and Sugar Shell, in Box

- 278—"Old Colony" 1847 Plate..... \$2.40
- 279—"Adam" Community Plate..... 2.45



Butter Knife, in Box

- 283—"Norman" Sterling Silver..... \$3.10
- 284—"Old Colony" 1847 Plate..... 1.25
- 285—"Adam" Community Plate..... 1.25

STERLING SILVER IN CHESTS

We can furnish chests of Silverware of every description in Sterling Silver, 1847 Rogers and Community Plate. We can obtain very quickly almost any combination of pieces and pattern you desire.

26-PIECE CABINET

Mahogany or Oak case lined with satin. Holds 6 dessert knives, 6 dessert forks, 6 dessert spoons, 6 tea spoons, 1 butter knife and 1 sugar spoon.

- 289—"Norman" Sterling Silverware..... \$95.00
- 290—"Old Colony" 1847 Plate..... 27.60
- 291—"Adam" Community Plate..... 32.10



1847 — Seventy Year Plate — 1917

1847 ROGERS BROS.

SILVERWARE



“OLD COLONY” PATTERN.

This is probably the most popular of the many attractive patterns made in “1847 Rogers Bros.” Silverplate. We price here only the staple and most useful pieces. Other fancy pieces can be quickly obtained.

Tea Spoons, per dozen	\$6.50	Pickle Forks, long, each	\$1.25
Dessert Spoons, per dozen	11.50	Butter Knives, each	1.25
Table Spoons, per dozen	13.00	Butter Spreaders, per dozen	10.00
Dessert Forks, per dozen	11.50	Cream Ladles, each	1.50
Table Forks, per dozen	13.00	Gravy Ladles, each	2.00
Berry Spoon, each	2.50	Medium Ladles, each	6.00
Five O’Clock Tea Spoons, per dozen	6.50	Servers, Pie or Ice Cream, hollow handle, each	3.25
Iced Tea Spoons, per dozen	9.50	Sugar Shells	1.15
Soup Spoons, per dozen	13.00	Child’s Set (Knife, Fork and Spoon)	2.75
Cold Meat Forks, each	1.50	Table Knives, hollow handle, per dozen	18.50
Pickle Forks, short, each	1.15	Dessert Knives, hollow handle, per dozen	17.50

COMMUNITY PLATE



“ADAM” PATTERN

This exquisite new design in Community Plate is inspired by the charming work of the eighteenth century decorators headed by the Adam Brothers.

We can furnish the ADAM in chests containing a complete table service, in sets, or in separate pieces.

In point of design, wearing quality and public approval, there is no silverware in America to-day as well worth buying as COMMUNITY—the heaviest of heavy plate, with the wearing surface of every spoon and fork extra protected by the celebrated overlay disc of pure silver.

No.	Article	Price	No.	Article	Price
10611	H. H. Med. Knife—6 in roll.....	\$18.50 doz.	10620	Berry or Salad Spoon—1 in lined box.....	\$3.00 each
10607	Flat Med. Fork—6 in plain box...	14.00 "	10656	Olive Spoon—1 in lined box.....	1.50 "
10697	Flat Individual Butter Spreader (6 in lined box).....	10.50 "	10710	Pie or Ice Cream Server—1 in lined box.....	3.50 "
10688	Salad, Ind. or Pastry Fork—6 in lined box.....	13.00 "	10690	Tomato or Fancy Server—1 in lined box.....	3.00 "
10622	Bouillon Spoon—6 in lined box...	12.00 "	10717	Gravy or Sauce Ladle—1 in lined box.....	2.50 "
10602	Tea Spoon—6 in plain box.....	7.00 "	10682	Pickle or Olive Fork—1 in lined box.....	1.25 "
10629	Iced Tea or Lemonade Spoon—6 in plain box.....	10.00 "	10667	Cold Meat or Serving Fork—1 in lined box.....	2.00 "
10604	Soup Spoon—6 in plain box.....	14.00 "	10708	Sugar Tongs—1 in lined box.....	1.50 "
10650	Sugar Shell—1 in lined box.....	1.25 each	10695	Butter Knife—1 in lined box.....	1.25 "
10641	Orange Spoon—6 in a lined box..	10.00 doz.			

SILVER-PLATED TABLE WARE



A beautiful silver-plated Tea Service of Colonial design, 5 pieces.
 Without Tray.....\$60.50
 With Tray.....93.75
 Coffee Pot 8½ inches high, capacity 2 pints. 16.50
 Tea Pot 8½ inches high, capacity 2 pints... 15.60
 Sugar, 4 inches high..... 10.80
 Cream, 4 inches high, capacity ¼ pint..... 9.00
 Tray, 18 inches long..... 32.60
 Spoon Holder..... 9.00



Pickle Jar \$4.80

Removable Ruby Colored Jar, with plated top in rack, with pickle tongs on side. Height 12 inches.



296—Sugar and Cream Set \$10.80
 Attractive design, bright finish.



No. 294
 Combination Sugar Bowl and Spoon Holder \$7.45
 A very useful and attractive article for your dining room table. Height 8 inches.



297—Pie Plate \$5.25

Guernsey Fireproof Pie Plate. Dignified, pierced, silver-plated with solid ball feet. Height 9 inches.



293
 Handsome Card Receiver \$2.95
 Satin finish, height 5 inches, diameter of tray 6 inches.



298—Bread Tray \$4.85
 Satin finish, engraved centre and attractive raised design at each end.



295—Oval Casserole \$10.60

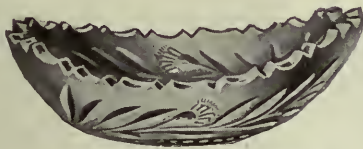
Pyrex transparent fireproof Casserole and engraved glass cover in silver-plated holder. Tasteful pierced design. Capacity 2 pints.



292—Table Napkin Ring, width 1 inch \$1.65

CUT GLASS

We illustrate here a few articles of Cut Glass of a high standard of quality. The blanks are of a sufficient weight to permit the deepest and most brilliant cutting.



No. 299—Pickle Dish \$5.70

In the lovely Carnation Pattern.
Length 6 inches.



No. 301—Mayonnaise Set \$12.50

Bowl and Plate in Carnation Pattern.



No. 302—Seven-piece Water Set \$9.90

Fine clear glass with delicate and graceful cutting. A beautiful and useful set, consisting of Jug and Six Tumblers. Capacity of Jug, 6 half-pints.



No. 300—Marmalade Jar and Spoon \$2.60

Colonial Glass Jar with silver-plated rim, cover and spoon.



No. 304—Trumpet-shaped Vase \$8.80

Carnation Pattern.
Height, 8 inches.



No. 303—Sugar and Cream Set \$8.80

Deep floral cutting of rich appearance. Capacity $\frac{1}{2}$ pint each.



No. 305—Berry Bowl \$8.50

A richly cut Bowl of sparkling design.
Diameter 8 inches.



No. 306—Pair Cut Glass Salt and Pepper Shakers, with silver-plated tops.

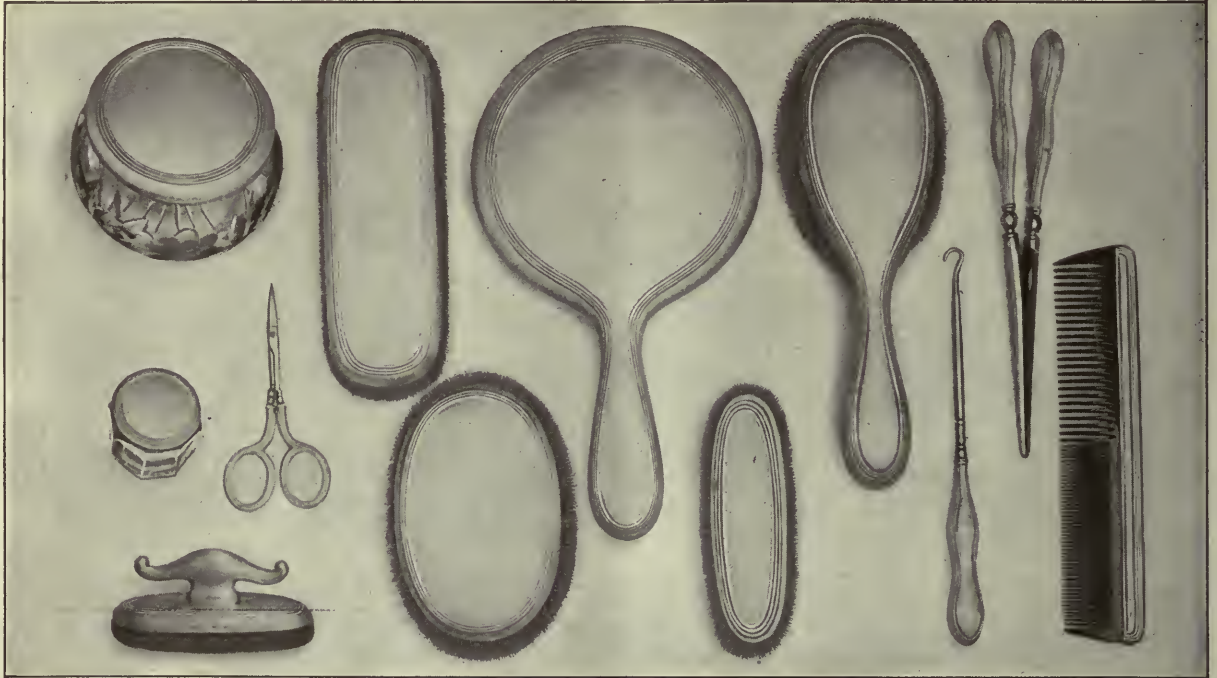
Per pair, \$3.00

Height $3\frac{3}{4}$ inches.



No. 307—A Salad Powl of Cut Glass, bordered with a silver-plated rim. Complete with pair of wooden salad servers, \$4.35

STERLING SILVER TOILETWARE



The "THREAD" Pattern

A simple, dignified and very beautiful design, absolutely plain except for a delicate "thread" border outlining the graceful contour of each piece.

Mirror, diameter 5½ inches.....	\$22.40	Hair Receiver (sterling top, cut glass receiver).....	\$10.45
Hair Brush, length 9 inches.....	15.75	Nail Polisher.....	5.15
Military Brushes, per pair.....	23.95	Manicure Scissors.....	2.05
Cloth Brush.....	11.95	Nail File.....	1.55
Hat Brush.....	6.75	Cuticle Knife.....	1.55
Comb, ladies'.....	4.95	Button Hook.....	1.55
Comb, gentlemen's.....	4.95	Glove Stretcher.....	2.95
Puff Jar (sterling top, cut glass jar).....	10.25		
Pomade Jar (sterling top, "Colonial" glass jar).....	2.35		

All other manicure pieces can be obtained in this pattern.

5-PIECE MANICURE SET, consisting of Polisher, File, Cuticle Knife, Scissors and Pomade Jar, can be supplied in a green moire case with green silk lining for \$15.75.

TOILET SETS

Sterling Silver and French Ivory in Beautiful Presentation Cases.



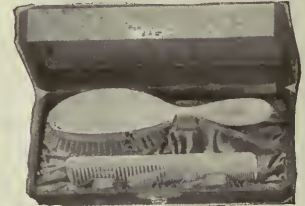
308—3-Piece Military Set \$27.45

Sterling silver "Thread Pattern," consisting of two Military Brushes and Comb in attractive green moire case, green silk lining.



309—Ladies' 5-Piece Toilet Set \$70.45

Sterling silver "Thread Pattern," consisting of Mirror, Brush, Comb, Cloth and Hat Brush in green moire case, green silk lining.



310—Ladies' 2-Piece Toilet Set \$10.80

French Ivory Brush and Comb in grey leatherette case, fancy brocade lining.



311—7-Piece Manicure Set \$6.95

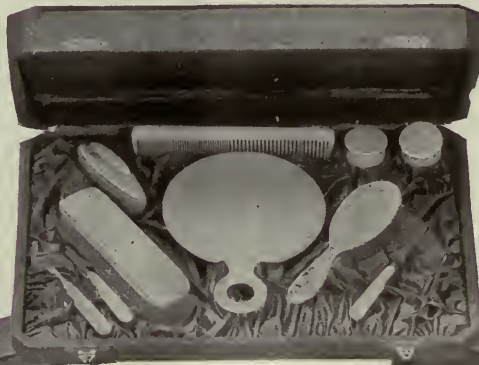
French Ivory in grey leatherette case, fancy brocade lining, containing Nail Polisher, File and Scissors, Cuticle Knife, Button Hook and 2 Pomades.

Brush, Comb and Mirror only, in green moire case \$48.95



312—5-Piece Manicure Set \$4.50

French Ivory, consisting of Nail Polisher, File and Scissors, Cuticle Knife and Pomade in grey leatherette case, fancy brocade lining.



313—11-Piece Toilet Set \$30.00

French Ivory, consisting of Mirror, Hair Brush, Cloth Brush, Comb, 2 Pomades, File, Cuticle Knife, Button Hook and Nail Scissors, in grey leatherette case, fancy brocade lining.



314—5-Piece Toilet Set \$24.50

French Ivory, consisting of Hair Brush, Comb, Mirror, Cloth Brush and Hat Brush, in grey leatherette case, with fancy lining.



315—8-Piece Toilet Set \$22.50

French Ivory, consisting of Hair Brush, Comb and Mirror, 2 Pomades, Nail Polisher, File, and Cuticle Knife, in grey leatherette case with fancy brocade lining.

All our Cases are strongly built of wood, covered with handsome green moire for Sterling Toilet Sets and grey leatherette for Ivory Sets.

FRENCH IVORY TOILETWARE



Ivory Toileware is rapidly becoming the most popular of all toileware on account of its beauty and durability. It does not dent, is not easily broken, and is simple to keep clean. Our Ivory is of a real ivory colour, graining and weight being absolutely solid. Every piece stamped "French Ivory."

- | | | | |
|---|--------|---|--------|
| 316—Mirror, ring handle, 6 inches diameter | \$7.65 | 326—Talcum Powder Box | \$2.60 |
| 317—Ladies' Hair Brush, concave back | 9.45 | 327—Salve Jar, glass-lined | .90 |
| 318—Ladies' Hair Brush, flat back | 4.35 | 328—Shoe Horn | .60 |
| 319—Military Brushes, concave back per pair | 13.30 | 329—Nail Files, flexible | .50 |
| 320—Hat Brush, flat back | 2.25 | 330—Button Hook | .50 |
| 321—Cloth Brush, flat back | 3.75 | 331—Cuticle Knife | .50 |
| 322—Comb, Ladies' | .80 | 332—Corn Knife | .50 |
| 323—Comb, Gentlemen's | .90 | 333—Nail Polisher, removable chamois covering . . . | 2.45 |
| 324—Hair Receiver | 3.00 | 333/1—Scissors | 2.10 |
| 325—Puff Box | 3.00 | 333/2—Soap Box | 1.45 |



REGENT PEARLS

"Regent Pearls" are perfect reproductions of real pearls, in colour, lustre, beauty, shape and delicate sheen—yet can be obtained for a very moderate price. Only an expert can distinguish between them and genuine pearls costing thousands of dollars. The secret of their beauty is a pearly substance produced by a secret formula. This is applied to crystal spheres—outside of solid spheres for "Indestructible" Regent Pearls and inside of hollow spheres for "Roman" Regent Pearls. The result is the incomparable "Regent Pearl."

String No. 1. Indestructible, graduated, 10k. gold spring ring clasp.....	\$19.00
String No. 2. Roman Pearls, uniform string, sterling silver clasp, set with rhinestones.....	\$14.00
String No. 3. Extra quality, indestructible, every bead perfect, graduated string, sterling silver clasp, set with rhinestones.....	\$38.50

NOTE

Uniform strings have every bead the same size as String No. 2.

Graduated Strings have the beads graded from the largest to the smallest, as Strings Nos. 1 and 3.



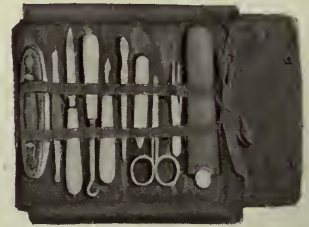
334—Mesh Bag \$10.00
6 inches wide.



335—Mesh Bag \$6.30
3 1/4 inches wide.



336—\$2.00
5 inches long,
48 inch chain,
oval "Gate"
top.



337—Manicure Set \$4.00

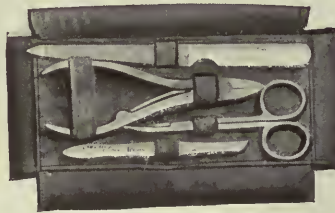
Case containing Nail Polisher with detachable chamois, Nail File, Button Hook, Cuticle Knife, 2 Cuticle Pushers, Manicure Scissors, Tweezers. Case with emery boards

Our MESH BAGS are made of white metal and do not tarnish or change colour. The metal wears white all the way through.



341—Ivory Pin Cushion
\$3.25

Diameter—3 3/4 inches. Purple velvet cushion, removable, with trinket case beneath.



339—Gentlemen's Manicure Set \$8.50

Grained brown leather case, leather lined, containing Manicure Scissors, Nail Clipper, Flexible File and Tweezers.



342—Manicure Set
\$12.50

Folds in shape of purse. Dark brown grained leather. 11 Manicure Pieces. Ivory handles, each 3 3/4 inches long.



338—Manicure Set \$7.25

Tan Fabrikoid case, purple velvet lining, containing Nail Polisher, Manicure Scissors, Ivory Nail File, Cuticle Knife, Corn Knife, Cuticle Pusher and Hoof Stick.



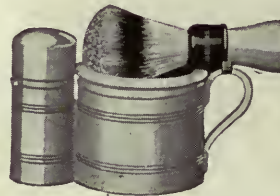
340—Ivory Jewel Case \$2.50

Hinged cover, lined with purple velvet.



343—Ivory Jewel Case \$2.35

Hinged cover, not lined.



345—Ivory Shaving Set \$6.75

Consisting of Brush, Shaving Soap Box with Soap, White Porcelain Mug in ivory holder.



344—Gem Safety Razor
\$1.25

1 1/2 x 2 x 3 3/4 inches, in leather case.



347—Auto Strop
Safety Razor

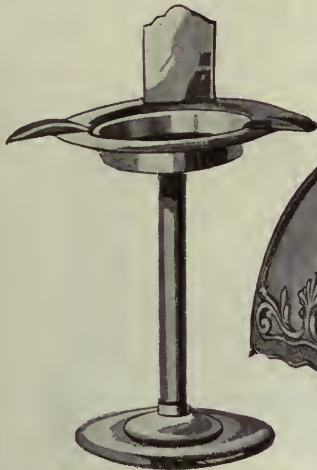
\$5.00

1 1/2 x 2 x 4 1/2 inches. Embossed, nickel plated case. Self-Stropping Razor, Strop and 12 Blades.

346—Shaving Set
\$6.80

White Porcelain Mug in silver-plated embossed pierced Cup; Shaving Brush with silver-plated handle.

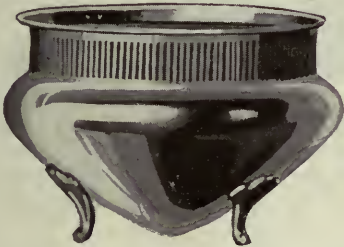




348—Flemish finish \$2.40. This Ash Receiver, carrying its own match box holder and cigar rests, on a tray 5 inches in diameter, is on a pedestal 9 inches high.



350—Ash Receiver, with match box and cigar rests. 6 inches in diameter. Old bronze finish\$2.40



354—Fern Pot \$4.85. Old bronze and gold finish. Made of solid brass. Earthenware pot fitted. Diameter 6½ inches.



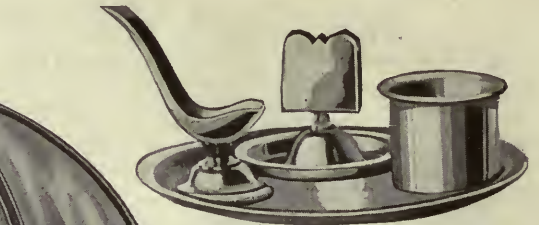
353—Ivory Photo Frame \$0.70. Opening 1¾ x 3 in. Easel stand.



351—Table Lamp \$18.75. Empire Brown finish and Amber shaded glass. Height 21 inches. Diameter of globe 14 inches.



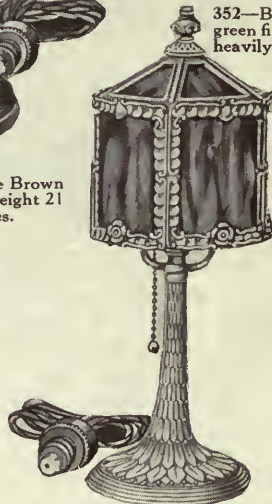
355—Tank Cigar or Pipe Lighter \$3.75. 4 inches long, bronze finish.



349—Smokers' Set \$3.85. Old bronze finish. Tray 12 inches in diameter.



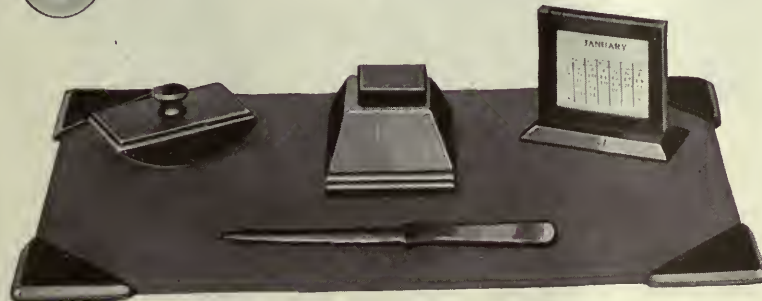
352—Book Ends \$4.85. Bronze and green finish. These Book Ends are extra heavily weighted and will hold any number of books in place.



356—Boudoir Lamp \$16.00. Ivory finish. Amber shaded glass. Height 15 inches.



357—Tobacco Jar \$2.85. Old bronze finish.



358—Mahogany Desk Set \$10.70—Attractive 5-piece set, consisting of Desk Pad with mahogany corners, 18 x 12 inches, and Mahogany Ink Stand, Rocking Blotter, Calendar and Paper Knife.



359—Nickel finish Photo Frame \$0.80. Non-tarnishable metal of platinum appearance. Opening 3¼ x 4 inches. Purple velvet easel back.



360—Ivory Photo Frame \$2.25. Opening 4½ x 5¾ inches. Ivory easel back.

HIGH-GRADE WATERBURY CLOCKS

ABSOLUTELY GUARANTEED



360B—Waterbury Chime Clock—striking Westminster chime every quarter hour, same as chimes in Victoria Tower, Westminster, London; on beautifully-toned straight wire gongs. Cabinet, mahogany finish. 7-inch silvered dial. Height 13 1/8 inches. Width 10 3/8 inches. \$90.00



367—Waterbury, mahogany, 1-day time. 2-inch dial. Height 4 3/8 inches. A small, handsome time-piece. \$9.00



361—Waterbury, 8-day, gong strike, mahogany finish, 6-inch dial. Height 11 3/8 inches. Width 8 1/2 inches. Fully guaranteed by us and the makers. \$22.00



362—Waterbury, mahogany finish. 1-day time. 2-inch dial. Height 4 1/4 inches. An attractive design, enclosing a reliable movement. \$10.75



363—Waterbury Nickel Alarm, with bell on back. 2-inch dial. Will ring quarter minute and be silent half minute alternately for five minutes. Small and dainty. \$7.25



364—Waterbury 1-day Alarm. Bell on back. 2-inch dial. A medium sized alarm that will give perfect satisfaction. \$8.00



365—Waterbury, mahogany finish, 8-day Clock, striking hour and half hour. 4-inch dial. Height 7 1/8 inches. Width 17 3/8 inches. An exceptionally fine appearing clock with high grade movement. \$24.00



366—Waterbury 8-day Kitchen Clock. Striking hour and half hour. Height 22 inches. A serviceable clock, fully guaranteed. \$8.75



369—Waterbury Radium Alarm Clock with black dial; hands and numerals covered with a radium luminous substance. The time can be readily seen at night. Nickel case. Price. \$9.50



368—Waterbury 8-day Mantel Clock, striking hour and half hour on gong. Enamelled wood. Gilt ornaments. Height 11 inches. Width 17 1/2 inches. A moderately priced clock with regular Waterbury guaranteed movement. \$21.50

REGINA ALARM CLOCKS



Model A

Nickel Case. Bell on top. 4-inch dial. 6¼ inches high. "Cut-off" switch enables alarm to be stopped at pleasure.

Model C

Nickel Case. Bell on back. 5½-inch dial. 7⅞ inches high. Long alarm with intermissions. Rings half minute and is silent half minute alternately for 15 minutes.

Prices on Application.

Model B

Nickel Case. Bell on back. 4¾-inch dial. 6½ inches high. Long alarm with intermissions. Rings half minute and is silent for half minute alternately for 6 minutes.

HIGH-GRADE UMBRELLAS AND CANES

IN LATEST DESIGNS FOR BOTH LADIES AND GENTLEMEN

661
Ladies' Silver Cap with Plated Ring. Silk Mixed Cover. Umbrella \$7.25

Only the best quality shown.

1859. — Ladies' Blue and White Brakelite, with ring to match. All silk covered. Umbrella \$16.75

1820
Brown Pimento Cane. Brakelite Inlaid. \$3.50

5625. Men's Dark Wine Crook, Sterling Cap. Silk Mixed Cover. Umbrella \$7.50

1859

6506. — Men's Mahogany finish Hardwood. All Silk Cover. Sterling Cap. Umbrella \$17.00

1810
Wine Pimento Cane. Sterling Cap. \$3.50

661

5625

6506

1820 1810

SILVER-PLATED CIGARETTE, MATCH AND VANITY CASES



370—Cigarette Case
\$3.25

Will hold 10 cigarettes.



371—Cigarette Case
\$3.90

Will hold 12 cigarettes.



372—Match Box
\$1.75

Hinged cover with strong spring to hold it either full open or tightly closed.



Vanity Cases

Are similar to above when opened. There is space for 10 and 25 cent pieces. A mirror, with puff and powder box behind. The other half of the case is for cards, which are held in place by the spring holder.



373—Vanity Case
\$9.50

2¾ x 3½ inches



374—Vanity Case
\$3.60

2¼ x 3 inches



375—Vanity Case
\$5.75

2¼ x 3 inches



376—Vanity Case
\$5.75

2¼ x 3 inches

All these cases contain powder box with puff, mirror, space for cards and coins the same as illustrated.



SILVER-PLATED DORINE CASES AND POWDER BOXES

377—\$2.75
Neck Chain

378—\$1.25
Finger Chain

379—\$2.00
Neck Chains

380—\$2.25
Neck Chain

381—\$1.50
Finger Chain

Cut showing powder box open. Note mirror in cover.



SILVER PLATED COIN AND ROSARY CASES

No. 382—Coin Case,
\$3.00

No. 383—Coin Case,
\$2.20

No. 384—Round Coin Case,
\$2.00

No. 385—Rosary Case,
\$1.75

No. 386—Rosary, \$0.85 extra. Gold filled chain, with Imitation Coral Beads.

JEWELLERY REPAIRS

If you have any Jewellery or Silverware needing repairs or refinishing—old-fashioned Jewelry that you wish to have modernized—bring it to us.



No. 387

Silver-plated Miniature Case,

\$3.00

A very finely made case—holds 2 pictures one inch square.

Same as above, plain case. \$2.20

WATCH REPAIRS

Our Watch Repair Department will carefully undertake the overhauling, cleaning or repairing of any reliable make of watch.



No. 388

ELECTRO SILVER CREAM

Has no equal for cleaning silverware.

35c. Bottle



No. 389.

REX CEMENT

With this cement you can repair everything about your home. It will bind like magic—metals, wood, china, leather, ivory, statuary, jewellery, glass, etc.

Best Fireproof and Transparent

25c. Per tube

INDEX

	A	Page
Alarm Clocks.....		28, 29
Ash Trays.....		27

	B	
Baby Pins.....		11
Baby Spoons.....		31
Bar Pins.....		10
Bon Bon Basket.....		14
Book Ends.....		27
Bracelets.....		11
Bracelet Watches.....		3, 4, 5
Bread Board.....		15
Bread Tray.....		15, 20
Brooches.....		8, 9, 10
Butter Dishes.....		14, 15

	C	
Cake Plate.....		15
Cameo Jewellery.....		8, 10
Candlesticks.....		14
Canes.....		29
Card Receiver.....		20
Casserole.....		20
Cement.....		31
Chains.....		7, 12, 13
Child's Cup.....		14, 15
Cigarette Cases.....		30
Cigar Lighter.....		27
Clocks.....		28, 29
Coin Cases.....		31
Crosses.....		9, 11
Cuff Links.....		7, 12

	D	
Desk Set.....		27
Diamond Rings.....		6

	E	
Earrings.....		11
Electric Lamps.....		27
Entree Dishes.....		15

	F	
Fern Pot.....		27
French Ivory.....		23, 24, 26, 27

	G	
Gravy Boat.....		15

	H	
Hamilton Watches.....		1

	J	
Jewel Boxes.....		26

	K	
Knife, Pocket.....		12

	L	
Locketts.....		9, 11

	M	Page
Manicure Sets and Rolls.....		23, 26
Marmalade Jar.....		21
Match Box.....		30
Mayonnaise Dish.....		14, 21
Mesh Bags.....		26
Muffin Dish.....		15

	N	
Napkin Rings.....		14, 20
Necklets.....		9, 11, 25

	O	
Omega Watches.....		4

	P	
Pearls—"Regent".....		25
Pencils.....		12
Pendants.....		9, 11
Photo Case.....		31
Photo Frames.....		27
Pickle Dish.....		21
Pickle Jar.....		20
Pie Plate.....		20
Pin Cushion.....		26

	R	
'Regent' Pearls.....		25
Regina Watches.....		2, 3
Rings.....		6, 13
Rosary Case.....		31

	S	
Safety Razors.....		26
Salad Bowl.....		21
Salts.....		14, 21
Sandwich Plate.....		15
Scarf Pins.....		7, 13
Shaving Sets.....		26
Silver Polish.....		31
Silverware.....		14-20
Smokers' Sets.....		27
Soft Collar Pins.....		13
Sugar and Cream Sets.....		14, 20, 21

	T	
Table Silver (Knives, Forks and Spoons).....		16-19
Tea Sets.....		14, 20
Thimbles.....		31
Tie Clips.....		13
Tie Pins.....		7, 13
Tobacco Jar.....		27
Toilet Sets (Silver and Ivory).....		22-24
Trays.....		14

	U	
Umbrellas.....		29

	V	
Vanity Cases, etc.....		30
Vases.....		21
Vegetable Dishes.....		15

	W	
Waltham Watches.....		4
Watch Chains.....		7, 12, 13
Watches.....		2-5
Water Sets.....		21

