

*The Queen's  
Toronto*

1909

Choice Cut Flowers of  
Every Kind in Season

The Largest and Finest  
Collection in Canada

Designs for All  
Occasions



We Guarantee  
Safe Delivery  
anywhere on the  
Continent. Send  
for Price List

96 Yonge Street



Toronto, Ontario



# CHURCHES

---

DENOMINATIONS	CHURCHES	PRINCIPAL CHURCH	LOCATION
Baptist . . . . .	17 . .	Jarvis Street . . . . .	Cor. Gerrard and Jarvis Streets
Bible Christian . . . .	4 . .	Agnes Street . . . . .	Cor. Agnes and Teraulay Streets
Catholic Apostolic . .	1 . .	Catholic Apostolic . . . .	Cor. Gould and Victoria Streets
Congregational . . . .	9 . .	Bond Street. . . . .	Cor. Bond Street and Wilton Avenue
Christadelphian . . . .	1 . .	269 College Street . . . .	269 College Street
Episcopal . . . . .	— . .	St. Alban's Cathedral . .	Howland Avenue
Episcopal . . . . .	42 . .	St. James' Cathedral. . .	Cor. Church and King Streets
Episcopal (Reformed)	1 . .	Christ Church . . . . .	Cor. College and Lippincott Street
Hebrew Synagogue . .	4 . .	Hebrew Synagogue . . .	Bond Street
Lutheran . . . . .	1 . .	Lutheran . . . . .	116 Bond Street
Methodist . . . . .	36 . .	Metropolitan . . . . .	Queen St. E., between Bond and Church
New Jerusalem . . . .	1 . .	New Jerusalem . . . . .	Elm Street
Presbyterian . . . . .	30 . .	Old St. Andrews . . . . .	Cor. Jarvis and Carlton Streets
Roman Catholic . . . .	14 . .	St. Michael's Cathedral .	Shuter Street, between Bond and Church
Society of Friends . .	1 . .	Society of Friends . . . .	Carlton St., between Yonge and Church
Salvation Army . . . .	6 . .	Salvation Army . . . . .	Cor. James and Albert Streets
Unitarian . . . . .	1 . .	First Unitarian . . . . .	216 Jarvis Street



APPOINTED  
BY ROYAL WARRANTS

# FURRIERS

*To H. M. the Queen and  
H.R.H. the Prince of Wales*

Our showrooms contain much that is  
interesting, and a visit places you un-  
der no obligation to make a purchase.

Holt, Renfrew & Co.,  
Limited

5 King Street East, TORONTO  
and at QUEBEC



## PLACES OF INTEREST AND PUBLIC BUILDINGS

City Hall, Queen Street, head of Bay Street.  
Parliament Buildings, Queen's Park.

Osgoode Hall, Queen Street West.

Armories, University Avenue.

Normal School, Museum, etc., Gerrard and Church Streets.

Temple Building, Bay and Richmond Streets.

Lieut.-Governor's House, corner King and Simcoe Streets.

Custom House, cor. Yonge and Front Sts.

Post Office, Adelaide Street East.

Public Library, cor. College and St. George Streets.

Board of Trade Building, corner Front and Yonge Streets.

Canada Life Assurance Building, King Street West.

Confederation Life Building, Yonge and Richmond Streets.

Central Prison, Strachan Avenue.

Provincial Lunatic Asylum, Queen Street W.

Toronto General Hospital, Gerrard Street E.

Traders' Bank Building, Yonge and Colborne Streets.

Dunlop's Conservatories, Bloor Street and Lansdowne Avenue.

City Dairy, Spadina Avenue.

Exhibition Park and Buildings.

St. James' Cathedral (Episcopal), King St. E.

Knox Church (Presbyterian), Spadina Ave.

St. Michael's Cathedral (R.C.), Shuter St.

Metropolitan Church (Meth.), Queen St. E.

Baptist Church, cor. Jarvis and Gerrard Sts.

Knox College, Spadina Avenue.

Trinity College, Queen Street West.

Toronto University, Queen's Park.

McMaster Hall, Bloor Street West.

Allan Gardens and Burns' Monument, corner Sherbourne and Carlton Streets.

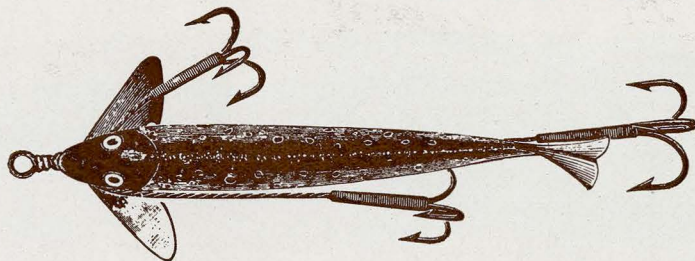
Riverdale Park and Zoological Gardens, Winchester and Sumach Streets.

Queen's Park and Monuments to the Heroes of Ridgeway, Queen Victoria, Governor Simcoe, Sir John A. Macdonald, Hon. George Brown, Sir Oliver Mowat, and to the Heroes who fell in the North-West Rebellion.

High Park, Western City Limits.

WE KEEP THE BEST  
ASSORTMENT OF

• **Fishing Tackle**  
IN TORONTO.



Rods, Reels, Lines, Flies, Live and Preserved Bait, Campers' Supplies, Tents, Blankets, Utensils, Canoes, Paddles,  
Lazy Backs, Row Boats, Oars, etc., Guns, Rifles, Revolvers, and Ammunition of all kinds.

Athletic Goods, Golf, Tennis, Cricket, Baseball, Lacrosse, Football, etc.

Manufacturers of the Famous  
Canadian Black Bird Targets

TELEPHONE  
MAIN 2895

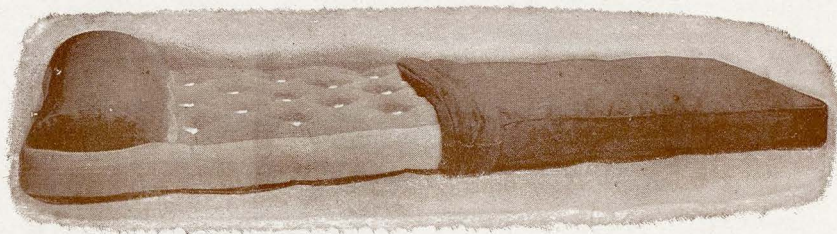
EXPERT FISHING ROD  
AND GUN REPAIRING

**A. FENN & CO., 101 King Street West, Toronto.**



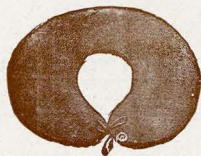
NOTHING SO RARE AS RESTING ON AIR.

# Pneumatic Mattresses and Cushions



WEIGHS ONLY 10 POUNDS

SHOWING CAMP MATTRESSES WITH PILLOW, BROWN DUCK COVER PARTLY REMOVED



SPORTSMAN'S CUSHION

Single and Double  
Canoe or Boat  
CUSHIONS

FISHING PANTS  
CAMP BLANKETS  
SPORTING BOOTS

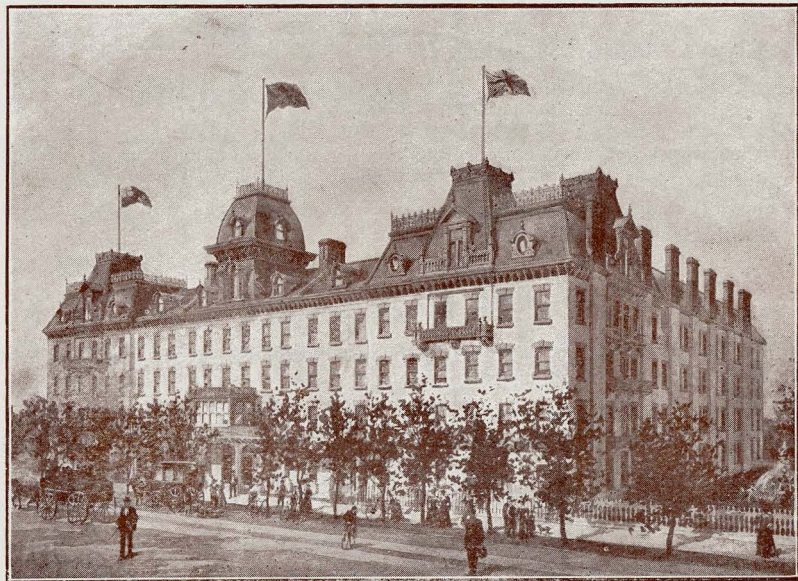
**Rubber Hose Belting & Mats**

FISHING, SHOOTING AND  
AUTOMOBILE COATS AND  
CAPES. A lightweight water-  
proof coat particularly adapted  
for warm weather ; weighs less  
than 2 pounds.

**THE ONTARIO RUBBER CO.**

44 YONGE STREET - TORONTO, ONT.

**Everything in  
RUBBER**



Queen's Hotel.



# THE QUEEN'S HOTEL

McGAW & WINNETT, Proprietors

TORONTO, CANADA

---

ONE of the largest and most comfortable hotels in the Dominion of Canada, being adjacent to the lake, commands a splendid view of Toronto Bay and Lake Ontario. It is well known as one of the coolest houses in summer in Canada, and is elegantly furnished throughout. 250 Rooms with 100 Bathrooms in connection.

## THE QUEEN'S

Has been liberally patronized by Royalty and nobility during their visits to Toronto and among those who have honored it with their patronage are:

His Imperial Highness, the Grand Duke Alexis of Russia.

Their Royal Highnesses, Prince Leopold, Prince George, Princess Louise and the Duke and Duchess of Connaught.

The Marquis and Marchioness of Lansdowne, Lord and Lady Stanley of Preston.

The Earl and Countess of Aberdeen.

Lord and Lady Minto, and the best families.

**EXPERT CLEANING  
MEN'S & WOMEN'S  
GARMENTS**

**YOU** can trust your finest costumes and garments of any kind to these Works. Over thirty years' experience and the largest and best equipped Works in Canada is a guarantee.

Our improved French method does not harm the most delicate fabric, lace or embroidery.

Spots are taken out of men's and women's clothing—not covered up to reappear. Let us show you what expert work really is.

---

**R. PARKER & CO.  
Canada's Greatest Dyers and Cleaners,  
TORONTO, CAN.**

HEAD OFFICE AND WORKS, 787-791 YONGE STREET.

Handsome Branch Stores in Leading Shopping Centres.



The beautiful grounds about it, being both spacious and airy, the Croquet and Tennis Lawns render it one of the most pleasant and desirable Hotels for business men, pleasure seekers and the travelling public.

---

## THE QUEEN'S

*Is Furnished with all the Latest Modern Improvements.*

*Handsome Passenger Elevator, Telephone in every Room, Etc.*

From the engraving it will be seen that THE QUEEN'S is four storeys high, covering a large area of ground, used exclusively for hotel purposes, and, having lawns on either side, with means of exit from the house, in addition to those in front and rear, these render it almost impossible for any accident to take place from fire, consequently THE QUEEN'S is looked upon as the safest Hotel in the Dominion of Canada.

TELEPHONE COMMUNICATION THROUGHOUT.

Private Coaches meet all Trains and Boats.

No Runners Employed.

○ ○ ○



○ ○ ○



(REGISTERED)

Special Showroom in King  
Edward Hotel Building.

○ ○ ○

○  
○  
○  
○  
○

# Fairweathers

## .. FURS

Known and Worn by  
good people Everywhere

OUR FUR SHOWROOMS ARE OPEN THE YEAR ROUND AND  
VISITORS ARE ALWAYS WELCOME—NO OBLIGATION TO BUY.

*"We make everything we sell and guarantee everything we make"*

## FAIRWEATHERS LIMITED

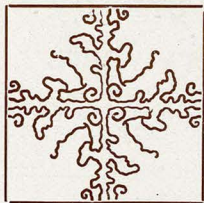
84-86 Yonge Street, Toronto

○ ○ ○



# THE QUEEN'S ROYAL

NIAGARA-ON-THE-LAKE

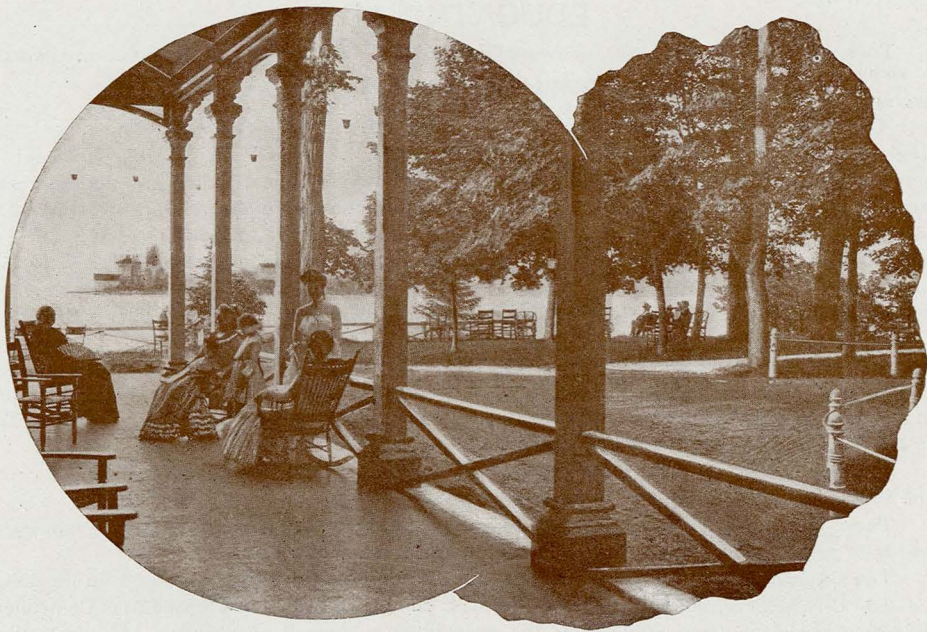


WINNETT & THOMPSON  
Proprietors      Niagara-on-the-Lake  
   Ontario

A beautiful and picturesquely situated Summer Hotel. Located in a private park on the shore of Lake Ontario at the mouth of the Niagara River twelve miles from Niagara Falls. Open from June to September. Two Golf Links, six Tennis Courts, Bowling Green, Boating, Bathing, Black Bass Fishing. Fine Roads for Motoring. Rooms *en suite* with baths. Latest and most improved sanitation.

## THE QUEEN'S ROYAL

was chosen by the Canadian Government for the use of their Royal Highnesses the Prince and Princess of Wales and party during their visit October 14 to 17, 1901. No finer compliment could possibly be paid. The appointments, cuisine and service are of the highest order. Illustrated circular on application. Steamers between Niagara-on-the-Lake and Toronto every two hours.



SIDE VERANDAH VIEW, LOOKING ACROSS NIAGARA RIVER,  
FORT NIAGARA, N.Y., IN THE DISTANCE.



## EDUCATIONAL

Toronto can boast of the following Educational Institutions, all of which are worthy of a visit:

University of Toronto, Queen's Park.  
Upper Canada College, Avenue Road.  
Collegiate Institute, Jarvis Street.  
School of Practical Science, Queen's Park.  
Normal School, St. James' Square.  
Model School, St. James' Square.  
Trinity College, Queen Street West.  
Knox College, Spadina Avenue.  
Baptist College, Bloor Street.

Wycliffe College, Queen's Park.  
Loretto Abbey, Wellington Place.  
St. Michael's College, St. Joseph Street  
Toronto Technical School, College Street.  
McMaster University, Bloor Street West.  
Moulton College, Bloor Street East.  
St. Andrew's College, Rosedale.  
Victoria University, Queen's Park.  
Bishop Strachan School, College Street.

## A FEW FACTS ABOUT TORONTO

Toronto, the Capital City of the Province of Ontario, is 75 years of age, being incorporated as a city in 1834. Its population then was about 10,000, to-day it is nearly 350,000. Toronto's acreage in 1834 was 5,000 acres, in 1909 it is 14,000 acres.

Toronto is the seat of the Ontario Government, and is the financial and commercial centre of the Province.

There are over 900 factories, representing an investment of \$75,000,000; employing upwards of 70,000 people whose pay roll amounts to \$29,000,000 annually.

The City's assessment amounts to \$206,216,834, and the tax rate is 18½ mills in the dollar.

The City is governed by a Board of Control, composed of the Mayor and four Controllers, all of whom are elected annually; they are assisted by a council of eighteen Aldermen, three from each of the six wards in the City, also elected annually.

# CRESCENT KENNELS

---

**T. WORTHY, Manager**

BEAGLES, COCKER SPANIELS, AND  
MALTESE TERRIERS

Puppies of these breeds usually for sale

**Nothing but Pedigreed Stock handled**

---

Summerhill Avenue, - Toronto



## PUBLIC PARKS

Queen's Park—Head of College Avenue.  
Allan Gardens—Sherbourne, between Carlton and Gerrard Streets.  
Riverdale Park—Corner Sumach and Winchester Streets.  
Exhibition Park—King Street West.  
Reservoir Park—Yonge Street North.  
Scarboro Park—Queen Street East, reached by electric car.  
High Park—Queen Street West.  
Lorne Park—West of Humber River.  
Island Park—Island opposite City, reached by ferry.

## THEATRES AND PLACES OF AMUSEMENT

Princess Theatre—King Street West.	Star Theatre—Temperance Street.
Royal Alexandra—King Street West.	Lacrosse Grounds—Rosedale.
Shea's Theatre—Yonge Street.	Lacrosse Grounds—Hanlan's Point.
Grand Opera House—Adelaide Street West.	Baseball Park—Hanlan's Point.
Majestic Opera House—Adelaide Street West	Hanlan's Island—Opposite the City.
Gayety—Richmond Street West.	Scarboro Beach—King Street East.

## STEAMER LINES

Niagara River Line—To Niagara-on-the-Lake, Queenston and Lewiston.  
The Hamilton Steamboat Company—To Hamilton.  
The Toronto Ferry Company—To and from the Island.  
The Richelieu and Ontario Navigation Company—To Rochester, Thousand Islands, Montreal and Quebec.

ESTABLISHED 1863

# Toronto Shirt Manufactory

13 KING ST. WEST

— IMPORTERS OF —

Fine Furnishing Goods, Hosiery, Fownes' and  
Dent's Kid Gloves, Welch, Margetson & Co.'s  
Scarfs and Collars. Large assortment of  
patterns for Colored Shirts

WHEATON & CO. TAKE ORDERS FOR  
SHIRTS, COLLARS, CUFFS



# CITY OF TORONTO

---

*Brief Sketch of "The Queen City of the West"*

*Information for the Traveller and Pleasure Seeker*

NOTICING Toronto from the decks of any of the steamers that come into its harbor, travellers or holiday seekers are very unfavorably impressed with its appearance. At first sight nothing but bare, low-lying stretches of land meet the view, but as the boat approaches the northern shore of the lake, and rounds the western point of the Island—Toronto's natural breakwater—and enters the bay bearing the city's name, the view of the city is imposing, and its forest of spires and many factory shafts give evidence of a prosperous and numerous community. The site of the city was originally very marshy, and in consequence it was of old known as "Muddy York," the latter being its sometimes name. The history of the town is comparatively uninteresting until the years 1812-15, when the place was sacked and partially destroyed by the American forces. Time, however, obliterates old scars, and the Toronto of to-day shows no sign of that early conflict. What the century did for our neighbors it has in no inappreciable way done for us; and both people have reasons to be thankful for the blessings of the new civilization it has been theirs so auspiciously to found and advance.

When our town was incorporated in 1834, the name of York was dropped and Sir John Colborne, who was at the head of affairs in this country, altered its style back to the old Indian name, the meaning and derivation of which is a little obscure, some being of the

# B. M. & T. JENKINS

## Antique Galleries

PHONE MAIN 1275

### For Old Mahogany and Rosewood Furniture



Old Arms and Armor, Quaint Old Brass, Curios,  
Bronzes, Miniatures, Paintings and Engravings,  
Old Gold and Silver, Rare China, Bric-a-Brac,  
Art Objects of Every Description



422-424 YONGE STREET AND 1-5 BUCHANAN STREET, TORONTO

BRANCHES—Phillips Square, Montreal; London and Birmingham, England.

The only house in Canada dealing exclusively in high-class Antique Furniture. Visitors will find the largest, most interesting and best selected collection on the Continent. A cordial invitation is extended and will repay a visit.

B. M. & T. JENKINS

opinion that the word comes from the Mohawk Dr-on-do, "trees in the water"; others that it is an Indian name signifying "place of meeting."

At the first election of the city W. Lyon Mackenzie was elected as its first mayor. He was foremost in the Rebellion of 1836-37, which was the cause of great trouble and depression but afterwards proved a great blessing, for by it Toronto had years of great commercial prosperity, and now ranks high as the second commercial city in the Dominion.

As before stated, the immediate points of the city lie somewhat low, yet there is a grand ascent and the lines of Tom Moore,

"Where the blue hills of old Toronto shed  
Their evening shadows o'er Ontario's bed,"

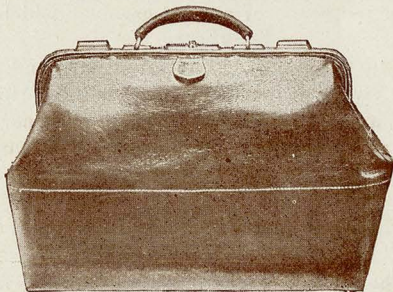
may have had a more true application in former days than some critics of the present seem to approve. The land, a mile from the lake, is 108 feet above the water's level, and two miles further on it is some 250 feet; four or five miles north the city seems to be at one's feet.

Nine lines of railroad, as follows, now have terminal stations in the City: The Grand Trunk Railway operating the East and West divisions, the Southern Midland and Northern divisions; the Canadian Pacific Railway operating the Toronto, Grey and Bruce, the Credit Valley and the Ontario and Quebec divisions; and the Canadian Northern Ontario operating its own line from Sudbury to Toronto. During the season of navigation steamers run to and from all points; and numerous schooners make Toronto their port of entry and exit.

In the City of Toronto there are at present about 60,000 public and private buildings, and the population is placed at 350,000. The City of Toronto has advantages over most cities and municipalities, owning large tracts of freehold property in the best business centres, for which it receives a large annual revenue from leaseholders. The yearly civic income and expenditure is over \$3,500,000 as an average. The assessed value of the property this year (1908) is \$206,216,834.



## Every **VISITOR** to **TORONTO**



should make a point of visiting our wonderful store.

It is one of the largest stores in the world in Traveling and Leather Goods and we are also the largest makers in Canada.

## **The Julian Sale Leather Goods Co.**

105 King St. West, Toronto

*Limited*

The city is divided into six wards, each ward sending three representative aldermen to the City Council.

Toronto is celebrated for its aquatic sports, the renowned scullers Hanlan and O'Connor having given an impetus to this class of sport and made Toronto Bay famous throughout the world. The bay on the city side is one long line of public and private boat houses. Of the former, the most prominent are the Queen City Yacht Club, Toronto Canoe Club, Argonaut Rowing Club, Don Rowing Club, and of the latter almost one unbroken line. During the boating season, in the afternoon and evening, the bay is the scene of a great carnival, which in winter is varied by ice-boating—a very exciting sport.

A visit to the Island will be appreciated by all. In the centre is the Island Park and the Island Club House of the Royal Canadian Yacht Club, while at the western end is the "Hotel Hanlan." At Hanlan's Point there are a roof garden, an electric merry-go-round, one-quarter mile bicycle track, lacrosse and baseball park, and various other amusements. The whole space is brilliantly illuminated at night by multi-colored electric lights and the various bands of the city play alternate evenings during the season.

The traveller arriving at any of the railway stations or by the steamboats, will find the QUEEN'S HOTEL within easy distance.

Passing into the city the visitors will see that the streets of Toronto are spacious, well laid out and regularly built. The main arteries of the city are Queen and Yonge Streets, which, crossing each other at right angles, divide the city into four large sections. Yonge Street runs north and south, Queen Street east and west.

#### YONGE STREET.

Starting from the foot of Yonge Street, named after Sir Geo. Yonge, northward from the bay, the most striking objects to be met are the Custom House, Bank of Montreal, Board

W. A. Murray  
& Company  
Limited



17 to 31 King Street East  
Victoria Street, King to Colborne Street  
10 to 16 Colborne Street  
TORONTO, ONTARIO, CAN.

IMPORTERS AND  
RETAILERS OF

High Class  
Dry Goods

ALSO TRUNKS, BAGS, VALISES  
AND NOVELTY LEATHER GOODS  
CHINA, CRYSTAL AND FINE  
:: :: :: BRASS GOODS :: :: ::

WE ALSO KEEP A FINE LINE OF  
IRISH LINENS WHICH WE IMPORT  
DIRECT from the MANUFACTURERS

Visitors are cordially invited to look  
through our various Departments.



of Trade Building, the Bank of British North America, the Globe Building, and the Traders' Bank Building, said to be the highest building in Canada. The lower portion of Yonge Street, from King to the bay, is composed mostly of wholesale houses, while above King it is almost an unbroken line of retail shops of every description, and it is perhaps the most busy street in the city, many of the buildings being of fine structure. Yonge Street is the great thoroughfare of the north, runs almost north and south, extending from the bay as far north as Holland Landing, a distance of thirty miles, and divides the city into two grand divisions. At the south-east corner of Yonge and King Streets are the handsome offices of the Canadian Pacific Railway, which are their headquarters in Toronto; across from these are the offices of the Grand Trunk Railway System.

#### YONGE STREET ARCADE.

On the east side of Yonge Street, between Adelaide and Richmond, can be seen the most handsome business block in the city. This is known as the Arcade, and extends from Yonge to Victoria Street. It is well lighted, and contains stores of every description.

#### HOLY TRINITY CHURCH.

The site of this beautiful edifice is in Trinity Square, between Alice and Louisa Streets, and was built by a lady whose name has never been known to the public. The endowment was anonymous, being £5,000 sterling, appropriated as follows: £3,000 to build the church, and £2,000 as the basis of an allowance for the incumbent. A short time ago a Memorial Brass was put up in the church to the memory of the donor.

#### ONTARIO COLLEGE OF PHARMACY.

In St. James' Square, 42 and 44 Gerrard Street, is the Ontario College of Pharmacy.

#### COLLEGE OF PHYSICIANS AND SURGEONS.

The headquarters of the College are situated at the corner of Bay and Richmond Streets. The office of the Registrar of the College is at the rear of the buildings.

# Wreyford & Co.

JAEGER DEPOT  
85 KING ST. WEST

Dr. Jaeger's Sanitary Woollen Underwear  
and Comfort Necessaries

---



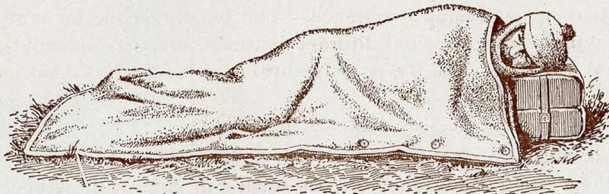
*Sole Agents, Cellular Aertex Underwear, Etc.*

Direct importers of fine Men's Furnishings, Flannel and Taffeta Shirts, Dent's Gloves. English Zephyr and Madras Shirts ranging in price from \$1.00 to \$2.50.



NEW SWEATER  
COATS

Plain and Com-  
bination Colors.



SLEEPING BAG.  
Consisting of Two Layers.

SLEEPING BAGS  
CAMEL HAIR  
BLANKETS  
PROSPECTORS'  
OUTFITS SUPPLIED

Send for Illus-  
trated Catalogue.



#### TEMPLE BUILDING.

On the north-west corner of Richmond and Bay Streets is the headquarters of the Independent Order of Foresters. The building, erected under the superintendence of the late Dr. Oronhyateka, is, if not the best, certainly among the best and most complete of its kind in the Dominion. The Temple is intended as an office building, but a portion of it is devoted to other purposes, and is used quite extensively for social functions of every description.

#### ONTARIO VETERINARY COLLEGE

Is situated on Temperance Street, near Bay Street, and is the most important of its class in America. Students from all parts of Canada and the United States have graduated here, and almost every State of the neighboring Union and every county in Canada has its representative student.

#### CANADIAN INSTITUTE

Is situated on Richmond Street, between Yonge and Church Streets, and will be found a place of interest to persons interested in science. The building contains a reading room well supplied with magazines, scientific and literary journals, etc. A splendid library of 6,000 volumes will be found upstairs. The Toronto Natural History Society also have rooms in the buildings.

#### KING STREET.

King Street is sixty-five feet in width, well built up with substantial brick and stone buildings, many of them being equal to any on the American continent. About forty years ago it was completely composed of wooden structures and hardly passable to pedestrians, but now each side is lined with stately stores, where most of the business is done. The improvements on this street are advancing rapidly, and it is now one of the finest streets in Canada.



# MICHIE'S TOURIST TOPICS



ONTARIO  CANADA.

## We outfit Camping Parties

with tents, utensils, blankets,  
provisions and all requirements

¶ There are several excellent  
Canoe Trips in Ontario of  
which we can furnish reliable  
charts.

¶ Our book "Tourist Topics"  
tells about our service, and how  
best to arrange the details of a  
Camping Trip---and we send  
it for the asking.

## MICHIE & CO., Limited

7 KING STREET WEST, TORONTO

Established 1835

At the west corner of King and Yonge Streets, we next notice, first, the fine building of the Dominion Bank, and then a little further west the handsome building occupied by the Bank of Commerce. Opposite this is the Manning Arcade Building, well worthy of a passing visit; a little farther west of this another fine building, probably one of the finest in the whole of Canada, erected and now occupied by the Canada Life Assurance Company, and near by (on Bay Street) is the Molsons Bank, then a succession of fine stores, some of recent erection, and of different styles of architecture, which cannot fail to attract attention.

#### ST. ANDREW'S CHURCH.

Upon the south side, a short distance farther on, stands St. Andrew's Church, which is, externally, one of the finest specimens of Norman architecture on the continent. Its entire effect is very striking.

#### GOVERNMENT HOUSE.


The residence of Lieut.-Governor Gibson is opposite the church, and is designed in the modern French style of architecture. Red brick is the material used in the walls, relieved with Ohio cut-stone dressings.

The main building is three storeys in height above the basement; the upper storey is partially in the roof, which is constructed on the Mansard principle; the sloping sides are very steep, covered with Melbourne slate, and relieved by handsome segmental domes, lighting the third storey apartments. The ridge is finished with moulded sides, and the deck is laid with the same material.


Towards Simcoe Street the frontage is about eighty-eight feet, and in the centre it rises to a tower seventy feet high, finished with a handsome wrought iron railing. The roof of the tower is of the same description as that of the main building, but starts from the balustrade, finished at the corners with panelled pedestals and carved vases.

# City Dairy Company

Spadina Crescent - Toronto, Canada



We are serving a majority of the best  
hotels, colleges and homes of Toronto  
with milk, cream and butter. ∴ ∴



## Milk and Cream

**GOOD ENOUGH FOR BABIES**

Without a chemical analysis and bacteriological examination it is impossible to judge the quality of milk. Therefore buy from Dairies of proved integrity only. ∴ ∴ ∴ ∴



"BEWARE OF BEING OFFERED TOO MUCH FOR YOUR MONEY—SOME THINGS ARE TOO CHEAP IN QUALITY TO BE ANYTHING BUT DEAR IN PRICE." ∴ ∴





The frontage of the main building towards King Street is about eighty-eight feet, and the kitchen wing extends 100 more, making a total of 188 feet. Covering the main entrance which is under the tower facing Simcoe Street, is a large, handsome carriage porch, supported on clusters of Corinthian columns resting on cut-stone pedestals. From the capitals of columns spring arches, supporting entablatures with enriched balustrade, finished at angles with panelled pedestals and carved vases. The verandah of the south front is treated in a similar manner. The main doorway is deeply recessed with massive cut-stone arch and jams, and broad cut-stone steps, and leads into the vestibule, twelve feet square, which is separated by an elaborate screen, filled in with stained and embossed glass from an inner vestibule or loggia of the same dimensions. This again is separated from the main hall by an enriched arch springing from the fluted Corinthian columns, with richly carved caps. The inside of the building is furnished in the most elaborate style and all modern conveniences. The grounds have been much altered and improved, and approaches of Nicholson pavement put to the entrances. Total cost of building, \$102,000.

#### EXHIBITION BUILDINGS

Were opened to the public by the Earl of Dufferin, then Governor-General of Canada, in September, 1878. The old Crystal Palace building, built mostly of wood and glass, which stood for so many years as a landmark of the Fair Grounds, was destroyed by fire a few years ago, and is replaced by buildings of much more modern appointments. The old Grand Stand has also met the same fate, and the Exhibition authorities now boast of having the largest covered Grand Stand on the Continent, a statement which is readily believed when one gets an opportunity to view the immensity of this structure. The grounds are situated overlooking Lake Ontario, and can be reached by trolley cars. The stranger in the city ought not to leave without paying a visit to what is conceded to be the finest Exhibition Park on the Continent.

# THE HANDSOMEST RETAIL BUILDING IN CANADA.



Toronto Visitors are always welcome to make this store their Headquarters while in town.

Bounded by Yonge Street on the East, Queen Street on the North, James Street on the West, Richmond Street on the South.

Length 319.6 feet, breadth 210 feet, height 6 storeys. Basement and sub-basement 137.6 feet. Area over 11 acres.

Steel Frame, Fireproof Construction, 16 elevators.

We have the largest and brightest Lunch Room in the city.

Writing and Waiting Rooms. Check Room for parcels in the Basement.

We are sole Toronto Agents for the famous Queen Quality Shoe for Women.

The celebrated Victor Shoe for Men is also made and sold exclusively by this store.

THE  
ROBERT

**SIMPSON**

COMPANY  
LIMITED

TORONTO

Cor. Queen and Yonge Streets

Take a car in front of the Hotel—three minutes ride.

#### LUNATIC ASYLUM.

This vast building stands further to the north on Queen Street, two miles and a half from the Central Market. It is located on a level plain, on a part of the old Garrison Commons, part of the Ordnance Land. Its front measures (verandah included) 644 feet. The building is four storeys high. Two very large wings have been added to this institution, and it now ranks third in point of size and population on the Continent of America. The grounds adjoining the Asylum are highly cultivated, the ornamental part is very neatly kept and adds much to the enjoyment and healthfulness of the patients. At present there are in the Asylum proper, and the two adjoining hospitals, over 800 patients. The institution is under the direction of Daniel Clark, M.D., the Superintendent, assisted by a complete staff. New buildings to supersede this fine structure have been erected on a healthy elevated spot at Mimico, it being found necessary to move the inmates, owing to the growth of the city and encroachment of factories, etc.

#### ORPHANS' HOME.

The home for Orphans is situated on Dovercourt Road, and is built of red bricks relieved with black courses, the basement being faced with Credit Valley grey stone. The locality has been well chosen, being at once elevated, picturesque and airy. The building, which by the way, cost over \$40,000, is well ventilated and supplied with all modern conveniences, with ample accommodation for over 200 boys and girls. Precaution has also been made in case of fire.

#### THE MERCER REFORMATORY.

The King Street cars going west convey the visitor to the Mercer Reformatory for Women. It is a red brick structure in a Gothic style of architecture. The building contains about 100 cells and rooms. Though a prison to all intents and purposes, the object of the institution is reformation rather than punishment. The cost of the building was about \$90,000.





10c.—ALL DRUGGISTS—10c.



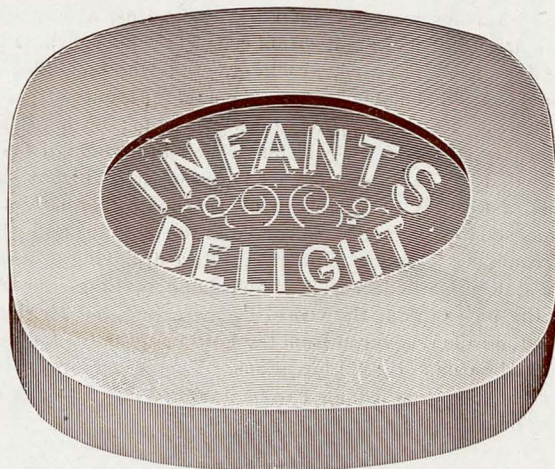
SOOTHING  
BECAUSE  
:: IT'S ::  
BORATED



HAVE YOU EVER USED A BETTER SOAP?

# INFANTS' DELIGHT

T O I L E T S O A P



Full Size Tablet

JOHN TAYLOR & COMPANY, L'T'D, TORONTO

#### HOME FOR INCURABLES.

On Dunn Avenue, Parkdale, is a large red brick building of light and cheerful appearance, occupied by one of Toronto's worthiest charities—Home for Incurables. A walk through the rooms will well repay the visitor. As may be expected from the name of the institution, those who enter the house are supposed to be diseased beyond hope of cure.

#### HIGH PARK.

Farther west is High Park, 320 acres, a magnificent stretch of alternate hill and dale, with beautiful trees and shrubbery. This fine park and grounds were formerly the property of the late J. G. Howard, architect, etc., who resided on the estate. Being a man desirous of benefitting his fellow creatures, he nobly presented a portion of this park to the city for recreation grounds. This took place during his life; on his death, which took place in the month of February, 1890, by his will he deeded the whole of his property and hall to the city, and thus provided for Toronto a place where her tired citizens can resort and enjoy themselves after the toils of the day or week are over. The generous donor is interred along with his wife in a massive stone mausoleum erected in the grounds and which he built during his life. The railing surrounding the stone is of great interest, having at one time formed part of the railing around the stately Cathedral of St. Paul, London, England. Another feature attached to them is that on the passage out the vessel was wrecked, but Mr. Howard's will was not to be thwarted; he had the rails recovered from the bottom of the St. Lawrence River by the aid of divers, and thus carried out his original intentions. The famed Grenadier Pond is situated on this property, and here boating and fishing can be indulged in. Leaving the park by the lake shore entrance, we turn our steps to the

#### HUMBER.

This is a favorite resort for picnics and excursions, has hotels, boat-houses, etc., and is a most enjoyable place for an afternoon's outing. Several romantic walks and drives can be

# Fine Furnishings

High-class Carpets,  
Rugs, Furniture,  
Draperies, Wall  
Papers, Pottery, &c.



**JOHN KAY COMPANY, Limited**

36 and 38 King Street West, Toronto.



made from this point, and the artist can find any amount of scope for the employment of his brush or pencil.

#### LORNE PARK.

A most attractive and favorite resort on account of its commanding location, extensive grounds, and most pleasant sail by steamer. The Park is now controlled by a company, who have erected a number of villas which can be rented by those desiring a rural retreat at a moderate cost. Special steamers make trips to suit those having business in the city, and a commodious hotel will provide for those who wish to take advantage of the grounds for picnic purposes.

#### TRINITY COLLEGE.

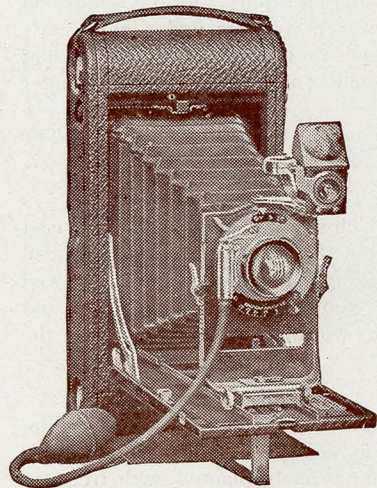
Returning eastward along Queen Street, the visitor arrives at Trinity College, standing back some distance. It is a very handsome building in spacious grounds, facing the entrance to the Bay. The College was erected in 1851, at a cost of \$40,000, after plans prepared by Mr. Kivas Tully. The building is of white brick with white stone dressings, and is designed in the third period of pointed English architecture. It has a frontage of 250 feet, facing south, with wings projecting east and west, 53 feet each. It is designed to accommodate eighty students, with class rooms, chapel, library, and museum; also private residences for the Provost and two senior professors. It is a great ornament to the unwearied zeal of the late Right Rev. Dr. Strachan, the first Lord Bishop of Toronto. The College is the training school of the clergy of the diocese, and has a high reputation.

During the year 1899 several additional wings were added and extensive alterations made to the Chapel.

#### OSGOODE HALL.

A short distance farther brings the traveller to Osgoode Hall, which is named after the late Hon. Wm. Osgoode, Chief Justice of Upper Canada, and contains rooms and offices for

*SEND US YOUR FILMS  
TO DEVELOP*



*WE RENT KODAKS*

Headquarters for Amateur Photo Supplies.

---

WE CARRY A COMPLETE LINE OF

**Kodaks, Cameras**

FILMS AND SUPPLIES



**J. G. Ramsey & Co., Limited**

89 BAY ST., TORONTO.

the Superior Courts of the Province. The cost of the building has amounted to about \$300,000. The grounds comprise about six acres of land.

A Law School has been established under the direction and tuition of three readers, designated respectively, the Reader on Common Law, the Reader on Equity, and the Reader on Real Property. Four scholarships have been established, one for students under one year's standing, of \$150.00 per annum ; one for students under two years' standing of \$200.00 per annum; one for students under three years' standing of \$250.00 per annum ; and one for students under four years' standing of \$300.00 per annum.

The building is of classic style and is of great beauty, the centre hall being very fine. The Courts of Queen's Bench, Common Pleas and Appeals are all fine chambers.

#### NEW CITY HALL.

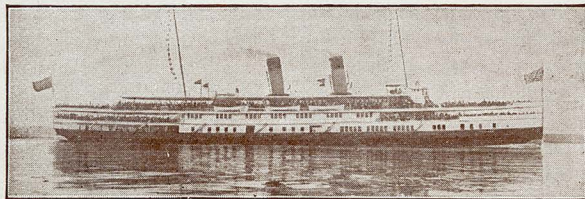
The new City Hall is situate at the head of Bay Street, which site was purchased at the cost of \$250,000. Contracts for the erection of this building were let in 1887, and the work commenced in 1889, at a cost of one and a half million dollars. The building is about 300 feet square, and built of stone, and is of Romanesque architecture; it has a tower 300 feet high, with an illuminated clock, which is 21 feet in diameter, and one of the largest in the world. The architecture of the building was executed by E. J. Lennox.

#### COLLEGE AVENUE.

Turning back for a short distance the above avenue is reached. This drive and promenade, leading from Queen Street to the University grounds, is nearly one mile in length, 120 feet in width, and contains about ten acres of land. It is handsomely planted with trees on either side, through the centre of which runs a carriage drive, flanked by a grass border of considerable width. The avenue is one of the finest in the Dominion, or perhaps on the continent, and was laid out about the year 1829 or 1830, by the University of King's College, now



# Niagara Navigation Co.



CONNECTING  
BUFFALO—NIAGARA FALLS—TORONTO  
6 TRIPS DAILY (EXCEPT SUNDAY)

DINING SERVICE ON ALL STEAMERS

WRITE FOR DESCRIPTIVE BOOKLET  
B. W. FOLGER, General Manager - TORONTO, CAN.

the University of Toronto, and planted by the late John Wedd. In 1859, this, with Yonge Street avenue, which is much narrower, and crosses it at right angles at its northerly termination, together with fifty acres of the University Park, were granted to the Corporation of the City of Toronto, on a lease for a period of 999 years, for the purposes of a public park, to be kept in order by the city. Building lots for villas of a certain description have also been laid out for leasing around this park, and many elegant residences have been erected.

#### THE UNIVERSITY BUILDINGS.

Driving for a short distance in the park, the traveller arrives at the University. This magnificent pile of buildings was erected during the years 1854-59, to provide accommodation not only for the University of Toronto (which simply confers degrees) but also for the University College, with its various lecture rooms, residences and students' quarters. The massive structure was designed by Messrs. Cumberland and Storm, and built under their direction. The chief facades of the building are to the south and east, the former of great massive elevation, for distance effect from the lake and city.

The general outline of the building approaches the form of a square, having an internal quadrangle of about 200 square feet, the north side of which is left open to the Park. The main frontage of the south is about 300 feet long, with a massive Norman tower in its centre, 120 feet in height, and comprising two storeys, that on the ground being devoted to lecture rooms, and the upper storey to library and museum ; this may be called the public portion of the building. The east side of the building is 260 feet in length, and erected by a subsidiary tower. The west end of the quadrangle is about 260 feet in length, and is used as residences for the students. The whole cost was nearly \$500,000.

In February, 1890, the building was destroyed by fire, caused by the accidental overthrow of a lamp. This sad calamity occurred on the evening of the University's conver-





# THE PARISIAN LAUNDRY

---



Wish to draw your attention to the quality of work done by them—none of that glossy, celluloid finish, but a snowy white, smooth edge, and a delight to the wearer.

---

Parcels left at the Queen's Hotel Parcel Office will receive prompt attention and will be quickly returned.

---

**PARISIAN LAUNDRY  
COMPANY OF TORONTO**

Limited

TELEPHONE MAIN 3943



sazione. Vigorous steps were taken to collect funds for its restoration, and it is now entirely rebuilt.

#### THE VOLUNTEERS' MONUMENT.

Very near the University stands the Volunteers' Monument, erected by the public in memory of the volunteers who fell in the act of repelling the invasion of a body of Fenian marauders from the United States in the year 1866. It is a composite structure of red stone, and contains also two statues in niches, representing two soldiers, and two female figures, typifying the mourners. A statue of Britannia surmounts the whole. Some of the slain were members of the University, and to their memory a window is also erected in the College Hall.

To the south-east of the Parliament Buildings is erected the monument to Queen Victoria; also one erected by the ladies of Canada to the heroes who fell in the North-West Rebellion.

A little to the west stands a handsome granite column, upon which is mounted a life-size statue of the late Hon. George Brown. The statue shows the Hon. Mr. Brown holding a roll of manuscript in his hand, and standing in an attitude as if just to deliver an address. This handsome monument was a few years ago erected by his many friends and admirers, to the memory of the Hon. Mr. Brown, who as a journalist, statesman, the leader of the Liberal party in Canada, and one of the Fathers of the Confederation of the Canadian Provinces, was more prominently identified with the interests of the country than any other Canadian statesman.

#### PARLIAMENT BUILDINGS.

Situate at the southern end of the Queen's Park are the new Parliament Buildings for the Province of Ontario. The view from the front of the buildings takes in the handsome University Avenue. Looking northward, Avenue Road, a continuation of University Avenue,

# ∴ Dominion Automobile Coaches ∴

## Seeing Toronto Tours

¶ In no other way is it possible to see so much of Toronto in so short a time and so little expense.    ::    ::    ::    ::    ::

¶ Dominion Coaches call regularly at this Hotel.    ::    ::    ::    ::    ::

¶ The Coaches are the finest in the country, and were built specially for these trips around Toronto. Each Coach is accompanied by a competent guide, who explains the principal points of interest en route. Fare, round trip, \$1.00. Tickets for sale at the office of Hotel.



## GEORGE W. VERRAL

Office and Waiting Rooms

Phones, Main 123 and 5327

55-57-59-61 York Street, Toronto

Write for Booklets



is seen beyond the group of oaks that adorn the park, stretching as far as the new Upper Canada College.

The principal frontage is 435 feet, with a depth of 260 feet, the main entrance forming a double letter E, and enclosing within its walls 76,000 square feet. The centre facade measures 120 x 125 feet. The main entrance is composed of three noble arches 18 feet wide by 26 feet high. This entrance is flanked by the great towers with their domes of copper and wealth of stone design.

Magnificent views are obtained from these towers. The structure took six years to complete, at a cost of \$1,250,000.

#### THE OBSERVATORY.

To the south of the University, and facing it, is the Observatory, instituted for the observance of meteorological events. The collection of scientific instruments, including a recent addition of a telescope especially obtained for observing the transit of Venus, is large and interesting. Weather reports, notices of the approach of storms, and the weather probabilities generally for the Dominion are issued from this office. "Old Probabilities" sometimes makes mistakes, but not often, and for twenty-four hours ahead is generally reliable.

#### MCMASTER HALL.

The Toronto Baptist College on Bloor Street is a grand effort in architecture. It is the seminary for Baptists throughout Canada. All local colleges of this denomination have been closed to theological students, and students transferred to this city. The college is built of brown stone faced with brick. It is five storeys in height. There are several lecture rooms, chapel, library, reading room, two dining rooms, gymnasium, and accommodation for some sixty students. Expense has not been spared to make it one of the most complete





# LEHIGH COAL IS OUR SPECIALTY

---

We Sell Thousands  
of Tons to Satisfied  
Customers

---

WRITE FOR PRICES

## CONGER COAL CO., Ltd.

WHOLESALE AND RETAIL

6 KING ST. EAST,

-

-

-

-

TORONTO

affairs of its kind in America. The building was presented to the Baptist denomination, free of debt, by the late Hon. Wm. McMaster, of Canada.

#### UPPER CANADA COLLEGE.

At the head of Avenue Road rises the stately building of Upper Canada College, which institution, founded in 1829, for many years occupied the commodious row of red brick buildings on King Street West, opposite the residence of the Lieutenant-Governor. The grounds surrounding the college are extensive and well laid out, and the interior equipments are all that modern art and appliances can make them. The new college buildings, occupying, as they do, one of the fine old homesteads that were once the pride of early settlers, cannot fail to interest anyone paying them a visit.

Returning through the upper ravine, the traveller reaches Yonge Street once more, and a drive eastward will bring him to the

#### CONGREGATIONAL CHURCH

Corner of Wilton Avenue and Bond Street, a new church belonging to the above denomination, and a striking piece of architecture.

#### JARVIS STREET BAPTIST CHURCH.

At the corner of Jarvis and Gerrard Streets is a splendid structure built of Queenston stone, pointed in Ohio stone, and is of the Gothic school "adapted," and has a spire and tower 165 feet high, is amphitheatrical in form and contains a fine organ.

#### THE NORMAL AND MODEL SCHOOLS AND EDUCATIONAL OFFICES.

Close by, upon one of the most attractive spots in Toronto, are the buildings and grounds of this department, which include the Educational Office, and the Depositories, and

*First-class*  
*Carriages*  
*and*  
*Victorias*

JOHN BARNES

104 Chestnut Street  
—TORONTO—

Apply Hotel Office.

Phone Main 5177.



Educational Museum, the Normal School with Girls' and Boys' Model School. The buildings are situated upon the centre of an open square of about seven acres and a half of ground.

A short time ago a bronze statue was erected in front of these buildings to the memory of the late Dr. Ryerson, whose efforts in the cause of education will ever be remembered. The Educational Museum contains specimens of Canadian and Natural History, and the best variety of maps, charts, diagrams, philosophical apparatus and school furniture. It also contains an extensive collection of celebrated Italian, Dutch and Flemish oil paintings and engravings, and casts in plaster of paris of some of the most noted groups of statuary (ancient and modern), together with a collection of English, Canadian and classical busts. Free admission may be obtained daily from nine until five o'clock.

#### HORTICULTURAL GARDENS.

A distance farther east are situated the Horticultural Gardens. The beautiful grounds occupied by the gardens extend over a space of ten acres, all of which are highly cultivated. They were first opened to the public on the visit of King Edward VII, then Prince of Wales, in 1860. A tree planted by him has now reached considerable size.

The gardens are open to all who desire to visit them.

#### ST. MICHAEL'S CATHEDRAL.

Returning south the visitor sees this church, which stands at the corners of Church, Shuter and Bond Streets, with an entrance on Bond Street. It is in the early decorative style of English Gothic architecture, built of white brick and cut-stone dressings, being 200 feet in length by 90 in width, and with the transepts making a total width of 115 feet, exterior dimensions. The windows are large and filled with tracery of great variety—the eastern window of seven lights being 36 feet high and 18 feet in width. The transepts have large rose windows with canopied niches in the gables. The building is wholly under one roof, forming in

# H. & C. BLACHFORD

---



“THE STORE THAT  
FITS THE FEET”

HIGH GRADE

## Footwear

FOR MEN, WOMEN AND CHILDREN

---

114 YONGE ST. : : : TORONTO

P.S.—Special Agents for the Dr. A. Reed's  
Cushion Sole Shoes.

the interior a nave 170 feet long, 40 feet wide and 56 feet high, with pier and arches triforium and rich ceiling. The side aisles are 180 feet long by 20 feet wide and 48 feet high, with a gallery at the west end. The building was commenced in 1845 and finished in 1847. The tower and spire are 250 feet in height.

#### THE METROPOLITAN CHURCH.

This fine structure, opposite St. Michael's Cathedral, is the principal Methodist Church in Toronto, and is situated in the centre of McGill Square, between Church and Bond Streets, the square having a frontage of 248 feet by 552 feet. The architecture is of the early French style, and is an ornament to the city as well as a credit to the Methodists. The material used is white brick, relieved with cut-stone dressings. The dimensions of the main building are 72 by 128 feet, the chapel in the rear being 63 by 63 feet, over which are large and commodious class and committee rooms. In front of the church is a massive tower, 29 feet square, and 80 feet in height to top of pinnacles; on either side of the junction of the main building with the chapels are two smaller towers, 16 feet square and 122 feet high. The roof is covered with slate of variegated bands. The church will seat comfortably 1,800, but will contain 2,500 persons.

#### ST. JAMES' CATHEDRAL.

This fine structure is the principal Episcopal Church in Toronto, and is the fourth church which has occupied the same site, the last one having been burnt in 1849. It is of early English Gothic architecture, and is beautifully executed, recent alterations costing \$40,000 having greatly improved the appearance of the interior of the church. The corner stone of the present building was laid on the 20th of November, 1850. The extreme length is 200 feet, and 105 feet wide.

During the year 1873 the massive tower was completed, making it 150 feet, 3 inches





Union Station

in height. The handsome side porches and pinnacles on the west side were also completed during the same year. The spire is 150 feet, nine inches high, and the wrought iron vane 16 feet, making a total height from the ground of 306 feet, being several feet higher than Trinity Church, New York, and the highest in America. The total cost has amounted to about \$166,000, including the peal of bells.

In 1875 the celebrated Chiming and Illuminated Clock, which took first prize at the International Exhibition at Vienna, was purchased from J. W. Benson, of London, England, by the citizens of Toronto, and presented to the Dean and Church Wardens of St. James' on Christmas Eve, 1876. The movement of the clock, next to that of Westminster, is the largest in the world, and in point of quality of material and finish of workmanship is unexcelled by any. The clock plays the Cambridge chimes on the smaller bells every quarter of an hour, and strikes the hour of the day on the larger bell. In 1876 the site was enclosed with a handsome new fence set on stone.

During the last few years the interior of the church has been remodelled, the galleries have been removed, choir stalls have been placed in the gallery. A brass lectern, the gift of a member of the congregation, adds to the ornamentation of the sacred edifice. The entire chancel has been relaid with polished tiles and the building lighted by electric light.

#### THE FREE LIBRARY

Stands at the north-west corner of College and St. George Streets, and is an imposing pile which has just neared completion. In 1883 the library property was handed over to the city in trust, and the books therein have formed the nucleus of what will doubtless be one of the most useful of the many educational institutions in the city. There are five branch libraries in connection with the central one, for the accommodation of the residents in the different parts of the city.

**“TASTE IT”**

AND APPRECIATE  
CHEESE IN ITS  
MOST PALATABLE  
FORM. . . . .



THE MAXIMUM  
NUTRITIVE VALUE  
AND THE MINIMUM  
DIGESTIVE EFFORT.

**“TASTE IT”**



### THE TORONTO GENERAL HOSPITAL

Is situated on Gerrard Street, between Sackville and Sumach Streets, and is an institution of which Toronto citizens have a right to be proud. It is composed of white brick. The auxiliary buildings are the Burnside Lying-in Hospital, the Andrew Mercer Eye and Ear Infirmary and the Fever Hospital, all erected by the gifts of prominent citizens, and standing in the General Hospital grounds, which are laid out beautifully in lawns, and planted with ornamental trees in a very tasteful manner. The institution is in charge of a trust composed of prominent citizens.

### THE TORONTO POST OFFICE

Is situated on Adelaide Street East, facing Toronto Street, and was opened to the public on Monday, 20th April, 1874. The style of architecture is Italian. It is 75 feet in front by 60 in depth, and is 66 feet to the eaves, but a dome carries it 3 feet higher. The building is of richly wrought Ohio stone, three storeys high, with a basement and a lofty attic in a Mansard roof. The front elevation is composed of a central break, which is relieved with complex columns and pilasters, with polished caps and marble bases and moulded cornices at heights corresponding with each floor. On each side of the central break is a recess bay, and beyond, at each outer angle, a tower having instriated pilasters and a continuation of the cornices as on the pilasters of the central break. In the rear of the main building is another, one storey high, with basement.

### CUSTOMS HOUSE.

This is a superb building in the Italian style of architecture, very much ornamented, having entablatures representing great travellers, and the arms of many of the principal cities of the Mother Country and elsewhere.

Telephone Main 1101

High Grade Printing

**Dudgeon & Thornton**  
**PUBLISHERS AND PRINTERS**

110 Bay Street, Mail Building

TORONTO

ASK FOR

# Watson's Scotch

Supreme Among

SCOTCH



WHISKIES



## McGAW & RUSSELL

AGENTS

PHONE

TORONTO

MAIN 2647

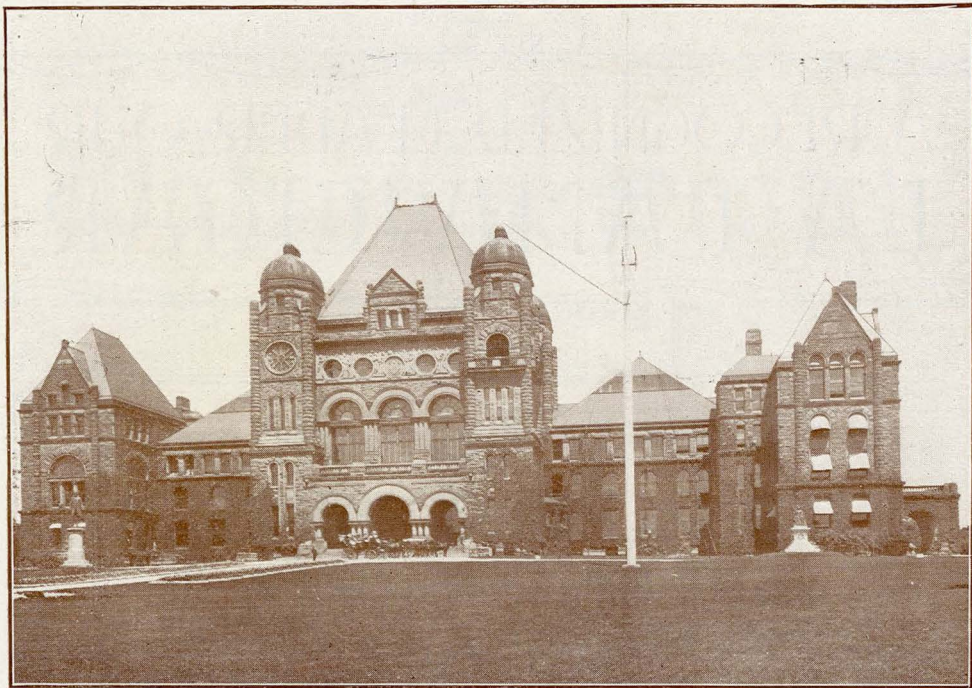


A RECOGNIZED LEADER--OUR  
LA FAMA CIGAR

Vallens' Clear Havana  
SPANISH Cigar THE EQUAL OF  
HAND MADE IMPORTED GOODS  
AT A LESS PRICE

**BRENER BROS. & VALLENS & CO.**

Factories: 184-190 HORTON STREET - - LONDON, ONTARIO



Parliament Buildings

Is mild, stimulating and refreshing; has by far the largest sales of any imported or domestic Lager in Canada. Order a bottle and be convinced.

---

KUNTZ

Regal

LAGER

---

Is constantly on hand at all leading hotels and cafés throughout the country.

---

BREWED AND BOTTLED BY

*The Hamilton Brewing Association, Limited*

HAMILTON, ONTARIO





Jarvis Street

Distiller  
of the  
celebrated brands  
of  
**WHISKEYS**



“ 83 ”

“ Star ”

“ White  
Wheat ”

# Jos. E. Seagram

Waterloo, Ontario, Canada.

---



---

Toronto Office : 30 Wellington Street East

C. T. MEAD, Agent

PHONE, MAIN 2567

Underwear  
 Sleeping Garments  
 Camping and Travelling  
 Rugs  
 Coat Sweaters  
 Knitted Golfers for Ladies  
 Knitted Golf Coats  
 for Men  
 Fancy Blouses  
 Dressing Gowns  
 Motoring Coats  
 Negligee Shirts  
 Motoring Wraps  
 Caps  
 Fancy Vests  
 Socks and Stockings  
 Bedroom Slippers  
 etc., etc.

*Jaeger*

When obtained elsewhere look carefully for this trademark which is your guarantee of the *genuine*.

Personal experience has confirmed Dr. Jaeger's special investigations and experiments in establishing the fact that animal wool is the most healthful and sympathetic clothing for the human body.

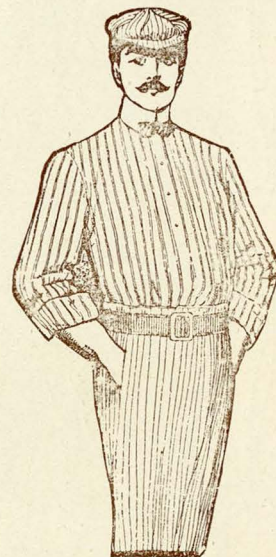
Jaeger's Pure Wool is the best, healthiest and cleanest clothing of the present day.



Headquarters for the exclusive sale of the famous Jaeger Pure Wool Day and Night Wear:

**10 Adelaide St. W.**

(Two doors west of Yonge Street)



Day Shirt—well cut and well made



# Imperial Bank of Canada

D. R. WILKIE    Hon. R. JAFFRAY  
President       Vice-President

Branches throughout  
===== the =====  
Dominion of Canada

CAPITAL Authorized,	-	\$10,000,000.00
CAPITAL Paid-up	- - -	5,000,000.00
REST	- - - - -	5,000,000.00

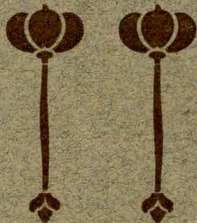
Letters of Credit Issued  
available in all parts  
of the world

Sterling Exchange Bought  
and Sold

HEAD OFFICE  
32-34 Wellington St. E.  
**TORONTO**



# Diamond Hall for Diamonds



RYRIE BROS. Limited

Jewellers to His Excellency the Governor-General

134-138 YONGE ST., TORONTO

FROM one end of America to the other, the words "Diamond Hall for Diamonds" have become a byword. ¶ We personally select every stone from the Amsterdam Cutters at "ready cash" prices, and are the largest importers of gems in Canada.

## Diamonds Enter Canada Duty Free

¶ As every Diamond comes into Canada free from duty, we are able to quote prices unequalled by the United States Jewellers, who are handicapped by the American duty.