

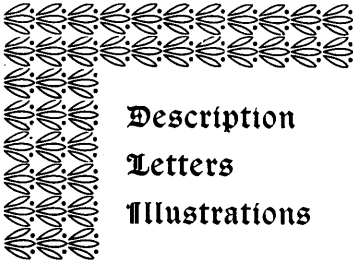
LUXFER PRISMS



LUXFER PRISMS.



Luxfer Prisms Give Daylight



Description

Letters

Illustrations



Luxfer Prism Company

Head Office and Works :

Limited

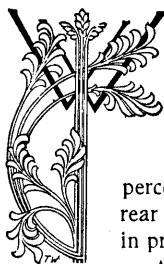
58 Yonge Street,

Toronto

Entered according to Act of the Parliament of Canada, in the year 1898,
by the LUXFER PRISM COMPANY, Limited, at the Department of Agriculture.

Luxfer Prisms

What They Do and How They Do It



WHEN daylight enters a room through ordinary glass, it strikes the floor close to the window at a greater or less distance, according to the width of street or yard on which the window opens. In each case the light is reflected throughout the room and a greater or less percentage is absorbed, the result being that the rear portion of the room or premises becomes dark in proportion to the distance from the window.

A light ray passing from a rare medium, such as air, to another more dense, such as glass, becomes refracted or bent upwards. Luxfer Prisms are constructed on proper scientific principles, to utilize this effect of refraction. They consist of plates of glass having the outer surface plain and the inner surface moulded into semi-prisms. In passing through the prisms, the natural light is refracted so as to travel horizontally into the interior of a room, diffusing light to every part of it.

To accomplish this under the varied conditions where windows open on a wide or narrow street, facing low or lofty buildings, a variety of prisms are necessary, and the success in getting desired results depends on the proper calculation of the degree of refraction needed and the proper installation of a prism having a corresponding refracting angle. This requires scientific treatment and the necessary data were only obtained after a long series of careful and expensive experiments.

Windows and Transoms

In a large majority of cases the prisms are glazed in sheets placed in sash instead of the ordinary glass. This is the cheapest and most simple way in which Luxfer Prisms can be installed. In stores the prisms are, in nearly every case, placed in transoms over the show windows. where it is necessary, the upper part of plate glass window is cut off, a light transom bar fitted in, and the prisms installed in the transom light, or upper portion of window.

Forilux

In large buildings where the walls are constructed of massive stone or brick work, the windows are frequently set back near the inner surface of the wall, leaving a very deep reveal. This reveal shadows a large portion of the window. To meet such a case, Luxfer Prisms are installed in an ornamental iron grill or frame, set substantially at the outer edge of stone work or wall, and in this position catch a large quantity of light and carry the same directly through the window into the interior of the premises.

Canopy

In lanes, light wells, and very narrow streets, little or no direct light from the sky—nature's reflector—enters the windows, and very little light is brought into a room from a window opening on such a situation. In order to catch the light from the sky, Luxfer Prisms are installed in canopies, the section of prisms being set at an angle from the wall of the building in an iron frame, like an awning, which can be made ornamental or plain, as may be desired. This construction is very effective in its results, and makes a window opening on a lane or narrow yard or street practically as effective as a window would ordinarily be opening on to a wide street or yard.

Sidewalks

To light a basement, where the ceiling of the basement is on a line with the street, the light must necessarily be taken through the sidewalk. The prisms for this purpose have to be very heavy, so that, when installed in iron frames or cement, they will be capable of carrying any load that a sidewalk can reasonably be expected to bear. These prisms are cut with reflecting angles on the pendant prisms, so that the light striking the surface of the sidewalk is reflected into the basement.

Lucidur

In lighting basements, where the light is required to be carried a considerable distance to reach the rear of the apartment, a Lucidur, or Curtain is used, consisting of prisms of various angles glazed together, which receive the light from the sidewalk prisms, and refracts it in the proper direction so as to diffuse it throughout the basement.



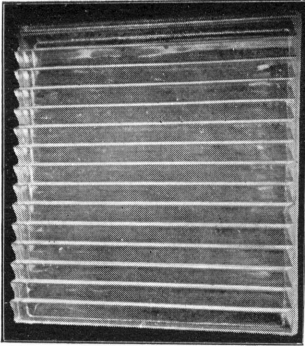
Electro-glazing



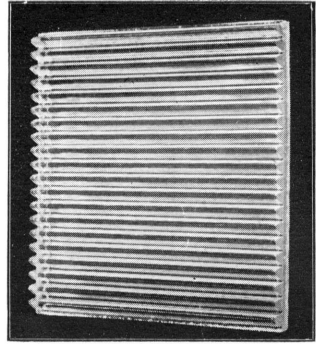
EXPERIMENTS proved that the ordinary lead glazing was not strong enough to support prisms in a window where the action of wind and weather would affect them. All other kinds of metal bars are usually made water and weather tight by means of cement or putty, which works loose, making the window defective. Besides being defective, the ordinary glazing necessarily shuts out a quantity of light, as the bars have to be sufficiently heavy to give an over-lap on each section of prisms to hold the window together.

In Electro-glazing, the prisms, after being ground to a templet, are laid in a frame with a small ribbon of copper surrounding each prism. The whole sheet is immersed in an electric bath and cemented together with a deposit of copper by a new patent electrolytic process. This glazing makes a window elastic and stronger than plate glass—perfectly water and weather tight—the metal net work very small so as to shut out a minimum amount of light, and the whole construction is durable, strong and neat. This system of Electro-glazing can be advantageously adopted in all kinds of ornamental windows. The perfect contact between the copper and the glass prevents any possible rattling or leaking, and the two metals, pure copper and glass, having substantially the same ratio of expansion and contraction, a window glazed by the electrolytic process is far superior in point of durability and appearance to any other style of glazing.





Window Prism
Suitable for Wide Street

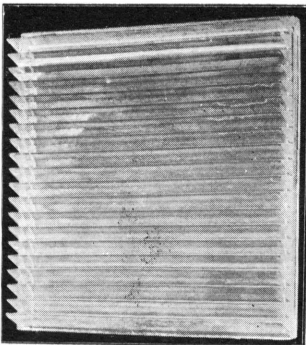


Window Prism
Suitable for Narrow Street

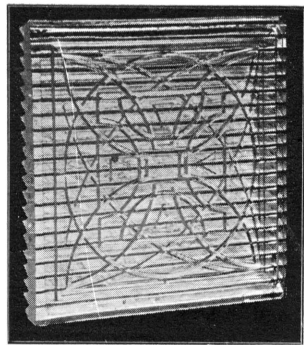
Luxfer Prisms for Windows



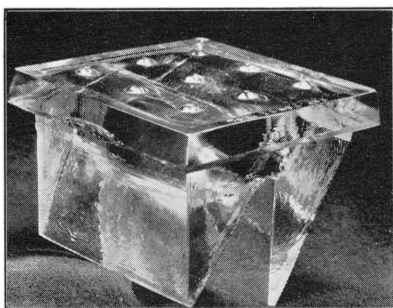
These Prisms are made with various angles to suit the condition of light in places to be used. They are made square or ornamental in shape. Every Prism is constructed scientifically and carefully tested. The backs are either cut and polished, or finished with ornamental design or plain, as may be required. All Prisms are glazed with copper by the new electrolytic process.



Canopy Prism
Used in Lanes, etc.



Ornamental Prism
Made in Several Styles

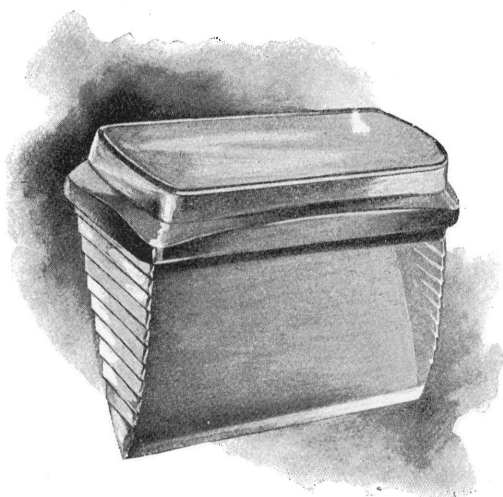


**Luxfer Prism for Sidewalk
The Standard Double Prism**

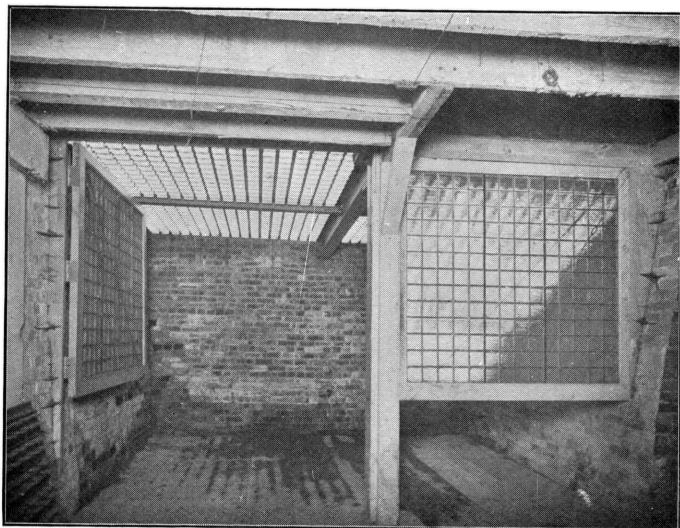
Luxfer Prisms for Sidewalks



All Luxfer Prisms for sidewalk work are set in iron frames, having suitable carrying strength, with cement top and smooth surface on prisms, or with iron roughed and pips on surface of prisms. In either case the sidewalk is not slippery, and is made weather and water tight. Condensation is reduced to the minimum.



**Luxfer Prism for Sidewalk
The Latest Multi-Prism**

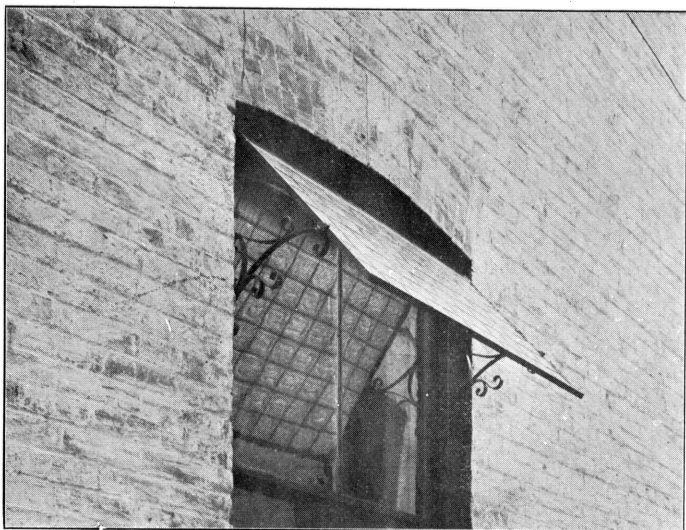


Luxfer Prism Sidewalk from Basement
 Showing Lucidux or Curtain in position.

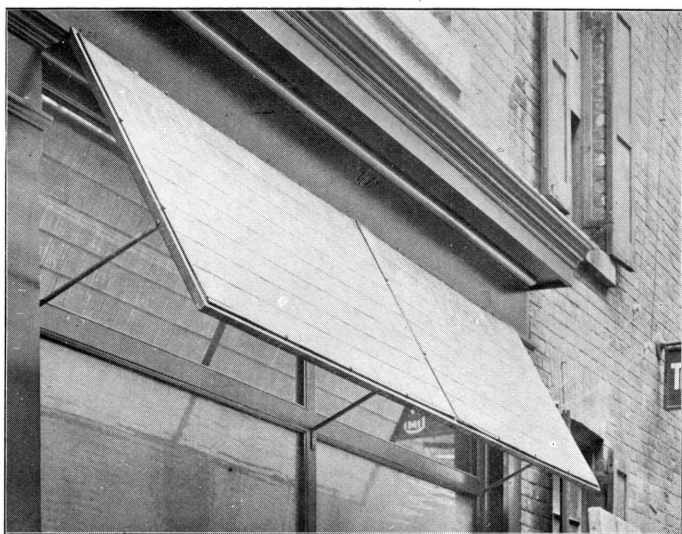


Luxfer Prism Installed in Ornamental Iron Grill
Bank of Commerce Building, Toronto

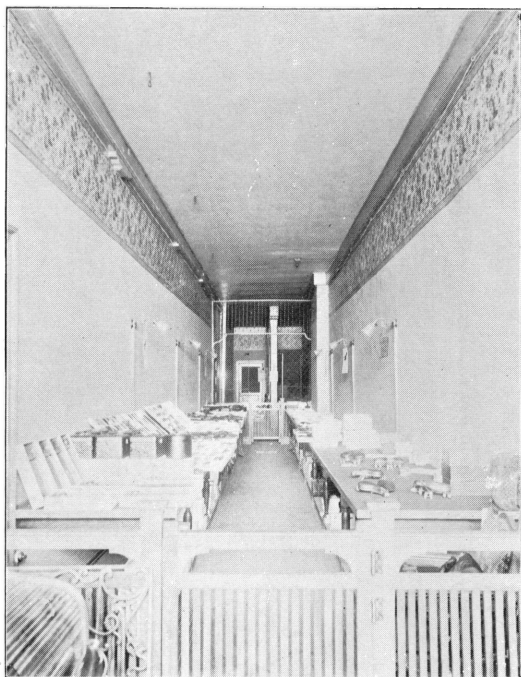
This construction is necessary where windows are shaded by heavy overhang or reveal.



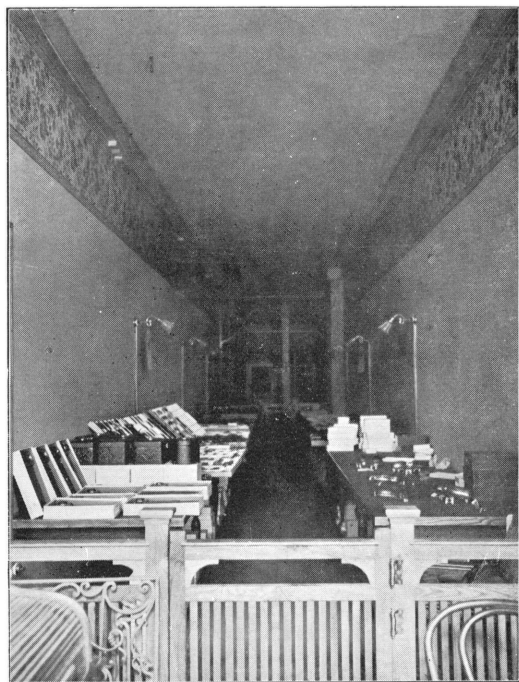
Luxfer Prism Canopy
 With Ornamental Bracket, installed in lane
 Merchants' Café, Toronto.



Luxfer Prism Canopy
 Plain Iron Frame and Bracket,
 Headquarters' Saloon, Toronto.



Sample Room
Ion Specialty Company, Limited—With Prisms



Sample Room
Ion Specialty Company, Limited—Without Prisms

ION SPECIALTY COMPANY

Limited

58½ Yonge Street,

Toronto, Dec. 1st, 1897.

Luxfer Prism Co., Limited,

Toronto.

Gentlemen,—Our sample room is long and narrow, the dimensions being 15 ft. wide by 100 ft. deep. The Prisms installed in the front window diffuse a good light to the extreme rear of the sample room, through a screen partition 60 ft. from front and to the rear of a back room, in all 100 ft. from the front window. The Prisms, being hung on hinges, can be removed, and in this way the comparison between the difference in conditions of light with and without Luxfer Prisms can be seen. Without Prisms the sample room is dark and useless as a salesroom. With Prisms we have all the light we desire for business purposes. We would not rent our premises without the Prisms, unless the light could be otherwise improved.

Yours truly,

ION SPECIALTY COMPANY, Limited

J. W. LESTER, Treas.



**W. & D. Dineen's New Fur Store,
Cor. Temperance and Yonge Streets, Toronto**
Lighted with Luxfer Prisms in Show Window Transoms.
F. H. Herbert, Architect.



Basement Dineen Building, Lighted by Luxfer Prisms in Sidewalk
W. & D. Dineen Basement Salesrooms,

W. & D. DINEEN,
Hatters and Furriers
Manufacturers of Seal Skin and other Fur Garments

140 and 142 Yonge Street,
2, 4 and 6 Temperance Street,
Toronto, Dec. 4th, 1897.

Luxfer Prism Co., Limited,
Toronto.

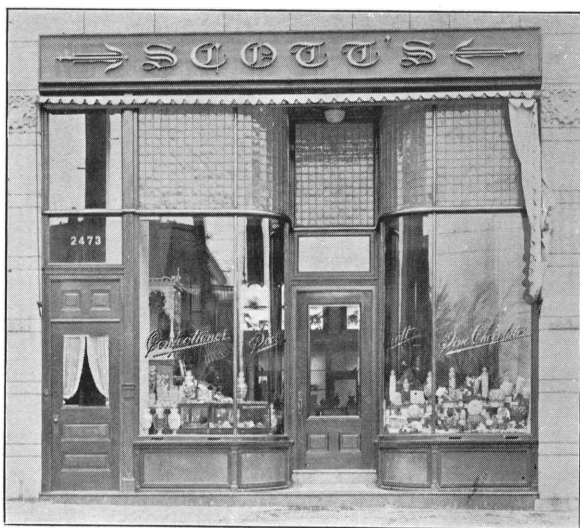
Gentlemen,—We installed Luxfer Prisms in our new building to light our basement, which we use as a salesroom, our store floor, and our workshop. We are pleased with the result in every department. Our basement is thoroughly lighted as a salesroom, and in it we carry on one of the most important departments of our business. Our store is thoroughly lighted in every part and we have our show windows dressed very fully, so that we depend entirely on the light from the transoms.

We consider the introduction of Luxfer Prisms in our new building one of the main features of the building, and we can confidently state that if we could not get the Prisms again, we would not have them removed for three times their cost.

You are at perfect liberty to refer anyone to us who may enquire as to the practical utility of Luxfer Prisms.

Yours truly,

W. & D. DINEEN.



Alexander Scott's New Confectionery Store, Montreal
David Ogilvy, Architect.



Interior Scott's New Confectionery Store, Montreal

ALEXANDER SCOTT,
Caterer and Confectioner

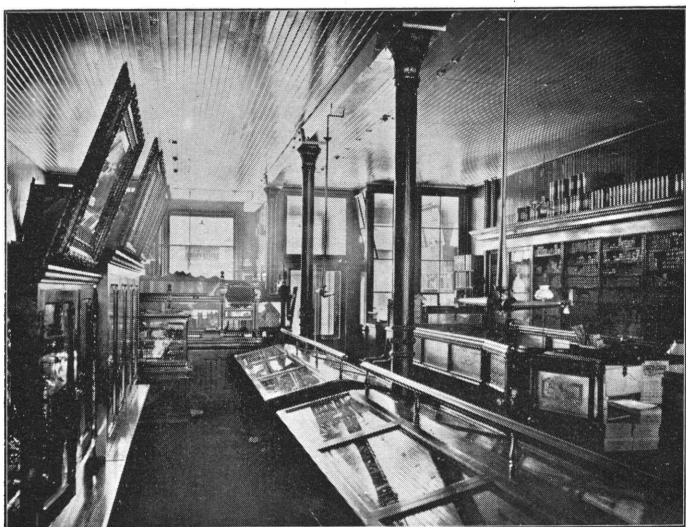
2471 St. Catherine Street,
Montreal, Dec. 7th, 1897

Luxfer Prism Co., Limited,
Toronto.

Gentlemen,—On the advice of my Architect I installed Prisms in the store floor and basement of my new building, and I am pleased to say that the result is thoroughly satisfactory. I use my basement for the purpose of manufacturing confectionery. It is thoroughly lighted through Luxfer Prisms in sidewalk and Lucidux, or Curtain. I get better results from my workmen and my goods are turned out more satisfactory in every way on account of the perfect light obtained through the Prisms. My store floor is splendidly lighted, and I certainly consider the Prisms installed in my new building one of the features of the building.

Yours truly,

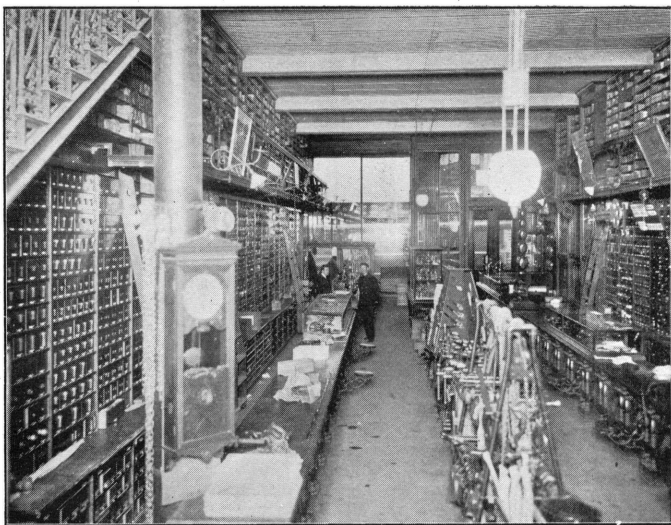
ALEX. SCOTT.



Hobb's Hardware Co., London, Ontario
Sample Room, Lighted with Prisms.



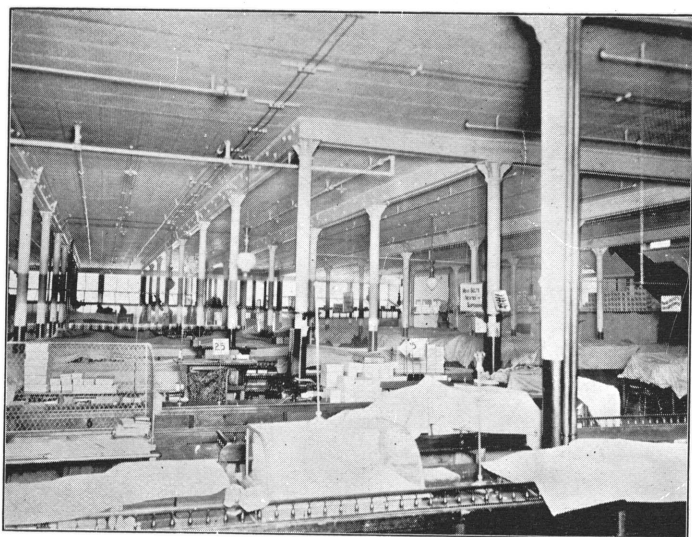
M. Philbin, Hardware Store, 2231 St. Catherine Street, Montreal
Luxfer Prisms installed in Front Transom.



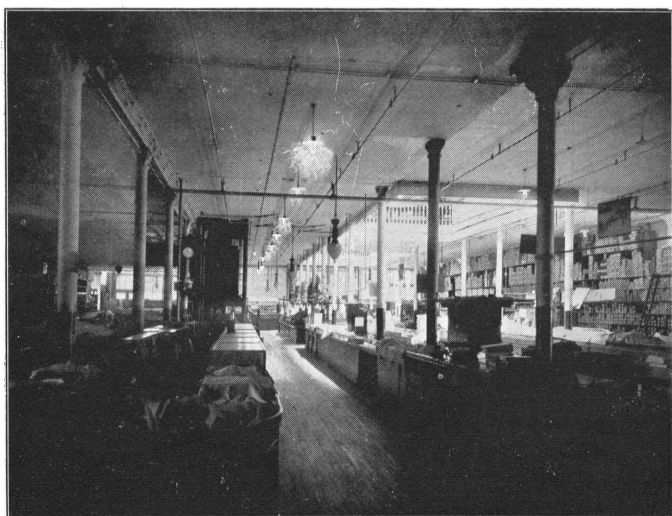
Rice Lewis Co., Limited, Hardware Store, Toronto
 Luxfer Prisms installed inside plate glass in front windows.



Alkenhead Hardware Co., 6 Adelaide St. East, Toronto
 Luxfer Prisms installed in transom over front windows and doors.



T. Eaton Co., Limited, Queen St. Section
 Lighted with Luxfer Prisms.



T. Eaton Co., Limited, Yonge St. Section
 Lighted with ordinary glass and light wells.

THE T. EATON COMPANY

Limited

Departmental Store and Importers.

190, 192, 194, 196, 198, 200	Yonge St.
11, 13, 15, 17, 19, 21, 23, 25, 27, 29	James “
10, 12, 14, 16, 18	Queen “
15, 17, 19	Albert “

Toronto, Dec. 2nd, 1897.

Luxfer Prism Co., Limited,
Toronto.

Gentlemen,—The Prisms installed in our stores upwards of one year ago are still giving very satisfactory results. We have already referred to a striking proof of the utility of your Prisms in the comparison between our Queen and Yonge street sections. The window frontages and the facilities for lighting through ordinary glass are about the same in these two sections. In the Queen street section, where the Prisms are installed, good light is carried back to the rear of the store. There are no light wells and we require no artificial light. In the Yonge street section, where ordinary glass is still used, we have three large light wells, which occupy a floor area of 3,000 square feet. In this section we burn more or less artificial light all the time.

The sidewalk lights installed in our Queen and James street fronts and also on two sides of our warehouse, corner of James and Albert streets, are very satisfactory and are giving us good service.

Yours truly,

THE T. EATON COMPANY, Limited
W. PHILIPS.



The Chas. Rogers & Sons Co., Limited, Furniture Store, Toronto



Blight Bros., Commercial Stationery, Toronto

THE CHARLES ROGERS & SONS CO.

Limited

Manufacturers of Fine Cabinet
Work and Upholstery.

95 and 97 Yonge Street,
Toronto, Dec. 6th, 1897.

Luxfer Prism Co., Limited,
Toronto.

Gentlemen,—We may state that when your representative claimed that he could light our store from the front, so as to cause the goods to stand out bright and clear in the rear, we had great doubts as to this being accomplished. Our store is 25x106 feet and difficult to light, the ceiling being comparatively low. We are pleased to say now that you have accomplished more than your salesman promised. The light from the Prisms seem to show up the polish and finish on our stock of furniture in the middle and rear of our store, fully as well as in the front.

We certainly consider the cost of the Prisms well spent money.

Yours truly,

THE CHAS. ROGERS & SONS CO., Limited
Per W. B. ROGERS, Sec. Treas.



BLIGHT BROTHERS

Dealers in Commercial Stationery,
Blank Books and Office Supplies.

81 Yonge Street,
Toronto, Dec. 4th, 1897

Luxfer Prism Co., Limited,
Toronto.

Gentlemen,—The Prisms you installed in our stores are giving absolute satisfaction. The light from the Prisms not only give a good general light throughout our store, but it goes through a glass partition and thoroughly lights our book-binding shop in the rear of the store. This is more than promised and more than expected from the Prisms.

Yours truly,

BLIGHT BROTHERS.



**Manager's Office, Trusts Corporation of Ontario,
Bank of Commerce Building, Toronto**



**General Offices, Trusts Corporation of Ontario,
Bank of Commerce Building, Toronto**

THE TRUSTS CORPORATION OF ONTARIO
Offices and Safe Deposit Vaults

Bank of Commerce Building, King St. W.

Toronto, Dec. 6th, 1897.

Luxfer Prism Co. Limited,
Toronto.

Gentlemen,—The Prisms you installed for us in our offices in the basement of the Canadian Bank of Commerce Building are giving us much satisfaction, the installation being outside the ordinary windows, and in fancy iron grill frames, suited to the general construction of the building, has cleverly overcome the initial difficulty, and our offices are wonderfully improved as far as light is concerned by the Luxfer Prisms.

It is only on exceptionally dull days that we now require to use artificial light in either our general offices or the Manager's private office. The result has been very satisfactory, and the cost we consider most reasonable in comparison to the benefits derived. You are at perfect liberty to refer any enquiries to us.

Yours truly,

A. E. PLUMMER, Manager.



John Catto & Son, Dry Goods, 57 and 59 King St. East, Toronto
Luxfer Prisms in rear windows set in fancy patterns.



The W. A. Murray Co., Limited, New Basement Salesroom
J. W. Siddall, Architect
Luxfer Prisms in sidewalk and rear windows.



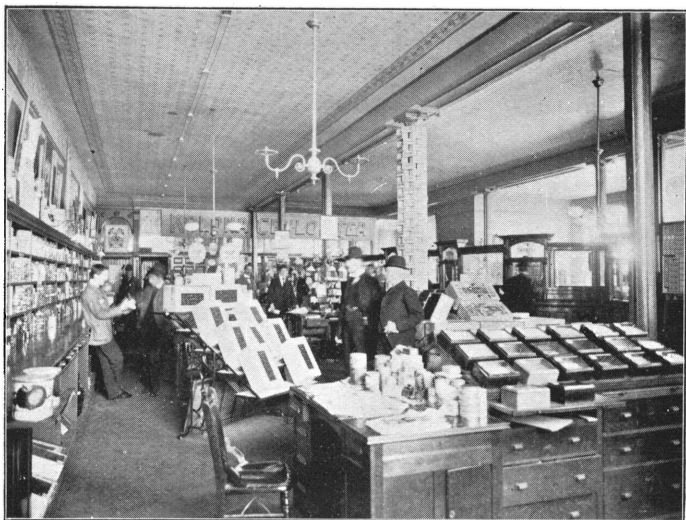
**Wm. Croft & Sons, Wholesale Fishing Tackle and Fancy Goods,
53 Bay Street, Toronto.**

Luxfer Prisms in rear windows.



**Merchants' Restaurant, Harry Morgan, Proprietor,
6 and 8 Jordan Street, Toronto.**

Luxfer Prisms in front windows and Canopies in lane windows.



Sample Room, Eby, Blain Co., Limited, Toronto



Basement Factory, R. & T. Watson, Toronto

THE EBY, BLAIN COMPANY, Limited

**Wholesale Importing
and Manufacturing Grocers**

Corner Front and Scott Sts.,
Toronto, Aug. 24th, 1897.

Luxfer Prism Co., Limited,
Toronto.

Gentlemen,—In reply to your enquiry, we beg to say, that the introduction of the Luxfer Prism light into our suits of offices and sample room has given splendid results. Over an area of 50x80 feet, the additional light brought in has made a wonderful transformation, sufficiently lighting up the places where it was formerly too dark to work and making artificial light during the day, entirely unnecessary.

We recommend the system on the grounds of health, comfort, and economy, and having experienced the advantage, we would not dispense with it for several times its cost. It has our unqualified endorsement.

Yours truly,

THE EBY, BLAIN COMPANY, Limited
H. BLAIN, Vice Pres.



R. & T. WATSON
Confectioners

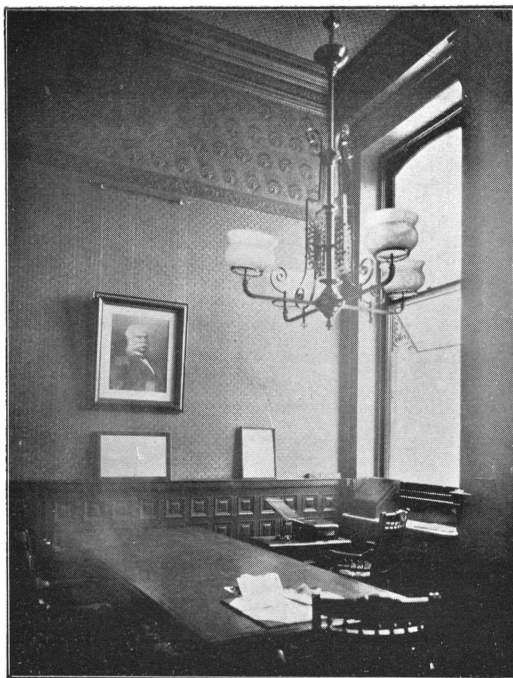
75 Front Street East,
Toronto, Dec. 6th, 1897.

Luxfer Prism Co., Limited,
Toronto.

Gentlemen,—We are very pleased with the results from Luxfer Prisms installed in sidewalk and Lucidux in our basement factory. We manufacture all our sweet chocolates and chocolate cream work in our basement and since the Prisms have been put in, the light has been satisfactory in every regard. Although the price appeared to us to be high, but we are convinced after experiencing the benefit derived from these Prisms that the investment is well made.

Yours truly,

R. & T. WATSON.



Board Room, Standard Bank of Canada, Toronto



**F. Robertson & Co., Wholesale Fancy Goods Warehouse,
20 Front St. West, Toronto**

THE STANDARD BANK OF CANADA

Toronto, Dec. 4th, 1897.

Luxfer Prism Co., Limited,
Toronto.

Gentlemen,—The Prisms you installed in our Board room are quite satisfactory. This room was always dark and depressing. It is now quite bright and cheerful.

Yours truly,

GEO. P. REID,
General Manager,
The Standard Bank of Canada.



F. ROBERTSON & CO.

Wholesale Importers of Berlin
Wools, Fancy Goods, Etc.

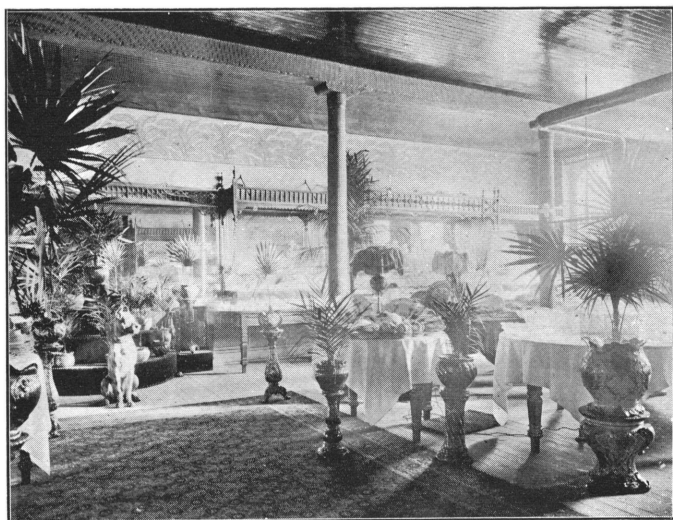
20 Front Street West,
Toronto, Dec. 6th, 1897.

Luxfer Prism Co., Limited,
Toronto.

Gentlemen,—The Prisms you installed in our premises have more than met our appreciation. Our warehouse is 36x187 feet and lighted from front and rear only. The light in the centre was very bad, in fact, we refused to take a lease of the premises on account of the condition of light. Since the Prisms have been installed, we could not desire a better lighted warehouse. Outside the saving in cost of artificial light, which we had to use most of the time previous to getting the Prisms in, we consider the superior quality of light for our purposes is well worth the cost of the Prisms.

Yours truly,

F. ROBERTSON & CO.



**Gowans, Kent & Co., Importers of China, Glass and Earthenware,
12, 14 and 16 Front St. East, Toronto**



**Hooper & Co., Chemists and Druggists,
43 King St. West, Toronto**

GOWANS, KENT & CO.

**Importers of Lamp Goods, China, Glass and
Earthenware, French and German Fancy Goods.**

12, 14 and 16 Front Street East,
Toronto, Ont., Dec. 6th, 1897.

Luxfer Prism Co., Limited,
Toronto.

Gentlemen,—Our sample rooms have been successfully lighted with Luxfer Prisms. To properly show our goods we require a clear white light. We have obtained this by using Luxfer Prisms and we are more than satisfied with results.

Yours truly,

GOWANS, KENT & CO.



HOOPER & CO.

Chemists and Druggists

43 King Street West,
Toronto, Dec. 4th, 1897.

Luxfer Prism Co., Limited,
Toronto.

Gentlemen,—The alteration you made in our store by removing the bevelled plate front in order to instal Luxfer Prisms, has proved eminently satisfactory to us. Although the bevelled plate front was probably the most handsome in Toronto and very costly to us, we suffered for the want of light. We consider light one of the great essentials of our business and since the Prisms have been installed, we have had all the light we can require for any purpose.

The sacrifice of our bevelled plate front meant a considerable financial loss to us, still, we considered that the cost of the Prisms plus this loss, is amply covered by the benefits we have derived from the improved light.

Yours truly,

HOOPER & CO.



**H. & C. Blachford, Fine Boots and Shoes,
114 Yonge St., Toronto**



**The Robert Simpson Co., Limited, Cor. Yonge and Queen Sts.
Edmund Burk, Architect.**

H. & C. BLACHFORD

Dealer in Fine Boots and Shoes

114 Yonge Street,
Toronto, Dec. 3rd, 1897.

Luxfer Prism Co., Limited,
Toronto.

Gentlemen,—The Prisms you installed in the front of our store and the large canopy in the rear have given us very satisfactory light in all parts of the premises, much better than we anticipated. Speaking of the canopy, we consider the results simply wonderful. We had despaired of getting any light from the rear lane until you installed your Prism canopy. Our store is very difficult to light, being 25x130 feet with a comparatively low ceiling. We are amply satisfied with the results in every way.

Yours truly,

H. & C. BLACHFORD.



THE ROBERT SIMPSON COMPANY **Limited**

Importers of Dry Goods, Wholesale and Retail.

170, 172, 174, 176, 178 Yonge St.
1 and 3 Queen Street West,
Toronto, Dec. 6th, 1897.

Luxfer Prism Co., Limited,
Toronto.

Gentlemen,—We had Prisms installed in our Departmental Store upwards of two years ago. The result was most satisfactory and we still think these Prisms are the greatest invention of the age.

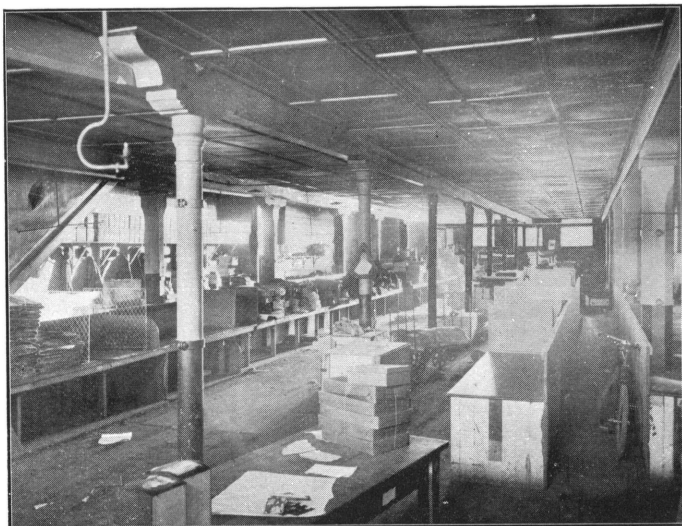
We have been repeatedly asked as to cleaning the Prisms and we may say that we have no trouble whatever in this regard. We have found the Prisms much easier to keep clean than ordinary plate glass.

Yours truly,

THE ROBERT SIMPSON CO., LTD.,
J. MARTIN, Secy.



**R. A. Dickson & Co., Jewellers and Opticians,
2261 St. Catharine St., Montreal**



**John Macdonald & Co., Wholesale Dry Goods,
Basement Shipping Room, Toronto**

R. A. DICKSON & CO.

**Jewellers, Opticians,
and Importers of Fine China and Cut
Glass, Sterling Silver and Plated Ware.**

2261 St. Catherine Street,
Montreal, Dec. 7th, 1897.

*Luxfer Prism Co., Limited,
Toronto.*

Gentlemen,—We are pleased to say that the Luxfer Prism transom you installed in our store has proven successful in every way. We hesitated renting the store on account of the light. The proposition to install Prisms was submitted to us and accepted with considerable doubts as to the results, however, we are pleased to say that our store is thoroughly lighted and our stock of jewellery is displayed to the best advantage. The light from the Prisms is apparently adapted to display the best class of jewellery. Our diamonds and precious stones are shown up in their true colors. This means a great deal to us and we think develops a particularly valuable feature of the Prisms to the jewellery trade.

Yours truly,

R. A. DICKSON & CO.



JOHN MACDONALD & CO.

Wholesale Dry Goods, Carpets, Etc.

21 to 25 Wellington Street E.
30 to 34 Front Street, E.,
Toronto, Aug. 16th, 1897.

*Luxfer Prism Co., Limited,
Toronto.*

Gentlemen,—Replying to your enquiry, we beg to say, that the Luxfer Prisms installed in our warehouse have given us wonderful results. We formerly used gas all day long in our shipping room, which is 40 feet wide by 130 feet long, but since the installation of the Luxfer Prisms, we have turned out 10 jets, effecting a saving of fully \$150.00 per year, as well as improving the flat for business purposes.

We can heartily recommend Luxfer Prisms for lighting business premises.

Yours truly,

JOHN MACDONALD & CO.



**Thomas Ligget, Carpets, Rugs and Oilcloths,
1844 Notre Dame St., Montreal**



**New Municipal Buildings, Toronto
E. J. Lennox, Architect.**

THOMAS LIGGET

Importer of Carpets, Rugs, Oilcloths, Etc.

1884 Notre Dame Street,
Montreal, Que., Dec. 8th, 1897.

Luxfer Prism Co., Limited,
Toronto.

Gentlemen,—We are pleased to say that the Prisms you have installed in our carpet warehouse have proved satisfactory. We had on dull days a dark warehouse and difficulty in showing our carpets to advantage with our carrying heavy rolls to the front of the store. We are now able to show the carpets in any part of the premises and in a most satisfactory light. We are more than pleased with the results obtained from using Luxfer Prisms.

Yours truly,

THOMAS LIGGET.



From the Office of . . .

E. J. LENNOX

Architect

Nos. 8, 9 and 10 S. E. Corner
King and Yonge Streets,
Toronto, Dec. 9th, 1897.

Luxfer Prism Co., Limited,
Toronto.

Gentlemen,—I consider the glass Prisms you have installed in the engine room of the new Municipal Buildings, Toronto, very satisfactory in diffusing light.

Further, I might say that the thorough and scientific manner in which you have developed the Prism business is certainly creditable to you.

The question of light in large buildings is one of the problems an Architect must seriously consider. Your Prisms as they are now perfected to suit the variety of conditions that arise in buildings will prove of great assistance and remove many difficulties, and I am of the opinion that your business of scientifically lighting, cannot help but grow in demand.

Yours truly,

E. J. LENNOX, Architect.



New C.P.R. East End Station, Montreal
 Bruce Price, Architect. F. D. Marvin, Supervising Architect.



Temple Building, Toronto, highest building in Canada
 Geo. W. Gouinlock, Architect.

Office of . . .

BRUCE PRICE

Architect

1133 Broadway, St. James Building, N.Y.
Montreal, Dec. 7th, 1897.

Luxfer Prism Co., Limited,
Toronto.

Gentlemen,—In the new Canadian Pacific Railway terminal station now being completed in this city, the Luxfer Prisms placed by you in the roof over the portico, makes up the best exhibit of sidewalk lights I have yet seen. Your design of frames and glass is particularly pleasing, giving as it does a maximum of prisms and therefore light with a minimum of the available lighting surface taken up with framing, making the whole effective in lighting and ornamental in appearance. Wishing you equal success with future work, I remain,

Yours sincerely,

F. B. MARVIN,
Supervising Architect.



Office of . . .

GEO. W. GOUINLOCK,

Architect

714 Temple Building
Toronto, Dec. 22nd, 1897.

Luxfer Prism Co., Limited,
Toronto.

Gentlemen,—I take pleasure in testifying to the excellent results effected by your Prisms system of lighting, which I have used extensively in the sub-basement of the Temple Building in this city.

The system is everything that could be desired for transmitting natural light, and has established in my mind all that you have claimed for it.

Yours truly,

GEO. W. GOUINLOCK,
Architect.



The Lawlor Building, Corner King and Yonge Sts., Toronto

Darling & Pearson, Architects.



Office of . . .

DARLING & PEARSON

Architects

Mail Building, Toronto.

Toronto, Dec. 15th, 1897.

Luxfer Prism Co., Limited,
Toronto.

Gentlemen,—We have had occasion to examine into your system of lighting buildings with Luxfer Prisms, and we are pleased to find that you have scientifically developed the Prism business in a most thorough manner.

We are very much pleased with results from Prisms installed for us in the Bank of Commerce building.

In the Lawlor building we are now just completing on the N.W. corner of King and Yonge streets, Toronto, we are using Luxfer Prisms to light store floor and basement. The question of light in buildings of this kind has always been a difficult problem for Architects. We think that Luxfer Prisms as perfected by you have removed this difficulty to a large extent.

Yours truly,

DARLING & PEARSON.



Canada Life Building, Toronto



CANADA LIFE ASSURANCE BUILDING

Eastern Ontario Branch, Manager's Office.

Toronto, Dec. 20th, 1897.

*Luxfer Prism Co., Limited,
Toronto.*

Gentlemen,—The Luxfer Prisms that you have installed in several of our offices have given good satisfaction. Our tenants are pleased and we are satisfied that your system of lighting will solve the difficulty we have throughout a large section of our building, in common with other office buildings, in getting light so as to make the different offices rentable.


The offices you have lighted up for us were dark and undesirable. As you have now fitted them up, these offices are bright and can, in our estimation, be rented for an increase rental over what they would bring in their original condition. We consider the Prisms of great value to building owners and wish you every success in your enterprise.

Yours truly,

GEO. A. & E. W. Cox, Mgrs. E.O.

Installation



N order to get the best results from Luxfer Prisms, the installation in the building must be carefully considered and executed. In some cases a very greatly increased light can be obtained by a slight alteration in the position of a sash, partition, awning, or other construction. It becomes necessary therefore that each installation should be superintended by some person having a thorough knowledge of Prisms and results to be obtained from their proper use.

Dealers in ornamental glass and general tradesmen, have frequently obtained prices on Luxfer Prisms and tendered for work without consulting us as to installation. In nearly every case where installations have been made in this way, no regard whatever has been paid to the science of Luxfer Prisms, the work being done the same as if the window was being glazed with ordinary ornamental glass and the result invariably being that the wrong Prism was used and the customer did not get proper results.



Prices



IT is impossible to fix a price list for Luxfer Prisms on any satisfactory basis. The cost of Prisms vary according to the form of the Prism itself and the weight of the metal in each piece. Until it is ascertained what style of Prism is required to light a given room, no reliable quotations can be made. On being furnished with necessary data describing the condition of the premises, and the surrounding buildings affecting the light, an accurate estimate of the required Prism can be arrived at and prices fixed.

A specification blank will be sent to parties in places where we have no representative, which, when filled in by the enquirer, will enable us to make an estimate on cost of installing Luxfer Prisms and the necessary, if any, alterations required to successfully light a given place.

For a rough estimate, the simplest way to give details is to send a sketch of premises to be considered, and show details on it, viz. :

1. Sketch, showing shape of premises in question, with dimensions in all directions.
2. Indicate windows available for Prisms and size of glass.
3. Show width of street, lane or yard facing windows in which Prisms are required, and the height of buildings, trees or other obstructions opposite such windows. It is especially important to have the distance of buildings from the windows and the height of such buildings.



Agencies:



R. F. OGILVY,
1833 Notre Dame Street,
MONTREAL

E. C. ARNOLDI,
91 Sparks Street,
OTTAWA

D. A. WEESE,
KINGSTON

ROSS BROS.,
HAMILTON, ONT.

HOBBS HARDWARE CO.,
LONDON, ONT.

T. L. E. PIERS,
214 Morris Street,
HALIFAX, N.S.

W. H. THORNE & CO.,
ST. JOHN, N.B.

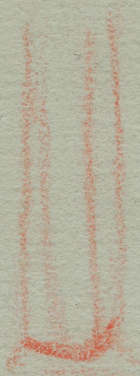
G. F. STEPHENS & CO.,
WINNIPEG, MAN.

Photographs by
F. W. MICKLETHWAITE,
Toronto

—
Engravings by
THE CANADIAN PHOTO-ENGRAVING BUREAU
Toronto

—
Printing by
THE BROWN-SEARLE PRINTING CO.,
11 Jordan Street, Toronto





1-3

5/76
115/5