

LANDSEER'S DOGS



First Class, (Second Part)

Young Ladies' Seminary,
YORKVILLE.

PRESENTED

TO
Master James Lauder

FOR
Attainment in Reading
Scripture and Poetry (1)
and for good conduct

BY
Christina Grundy

Yorkville,

June, 1879.

THE NEWFOUNDLAND.

THE Newfoundland Dog is so named from having originally come from Newfoundland—an island to the north-east of America. Here these noble animals were chiefly used to draw sledges, but in Britain they are properly made man's friends.

Their fondness for the water, and their ability and bravery in rescuing the drowning is well known, many very interesting anecdotes having been told of them. Not only have they saved single lives, but an entire ship's crew have been relieved from a watery grave by the bravery and wisdom of one of these intelligent dogs that took a rope in its mouth and swam with it from the ship to the shore, thus enabling all to be landed in safety.





THE SKYE TERRIER.

THE Skye Terrier is so named from having first been found in Skye, an island on the north-west coast of Scotland.

Its body is very long, and its legs very short, so that its length is about three times as great as its height. Its hair is very long and bushy, thickly falling over its face as well as its body, so that sometimes its eyes are hardly seen.

This funny looking dog is very amusing and clever. It can easily be taught many curious tricks, and as it is a brave, faithful, and affectionate little creature, it makes a good playmate for boys and girls.

THE RETRIEVER.

RETRIEVER Dogs are so-called on account of their recovering or "retrieving" game which has been shot by the sportsman. After the gun has been fired, this dog runs after the poor wounded bird, and by its keen sense of smell, is able to track it however far it may flutter away. They are also good swimmers, and can readily follow their prey over water.

A large Retriever is about twenty-four inches high. Its limbs are strong and powerfully built. Its fur is very curly, and in colour either black or a reddish brown. They are very intelligent dogs, and have been trained to perform many wonderful feats.





THE BLOOD-HOUND.

THE Blood-hound is so termed from the ease with which its keen sense of smell enables it to track a wounded animal, however far or winding may be its course. It is one of the largest known dogs, and though very faithful, is said to be of a bad temper. They are somewhat rare in this country now.

In former days, this large and noble-looking dog was used to hunt thieves who then abounded in the country. Cattle-stealers, who were much more common when cattle-stealing was punished by death, were often pursued by Blood-hounds, who, once on the scent, would never quit it till they had seized their prey.

THE STAC-HOUND.

I N former times the Stag-chase was very popular, and these dogs were then used in hunting the deer. Their long nose, with its sharp sense of smell, enabled them to follow up the trail, and their fleet legs and great powers of endurance enabled them to surely overtake the fugitive, which they were courageous enough to attack when brought to bay. This sport has now almost died out, and the Stag-hounds are at present far more rare than formerly, and it is thought they are also likely to become extinct.



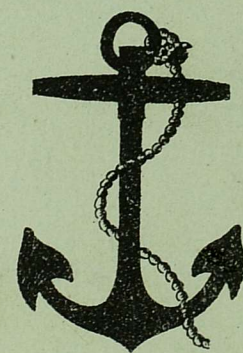
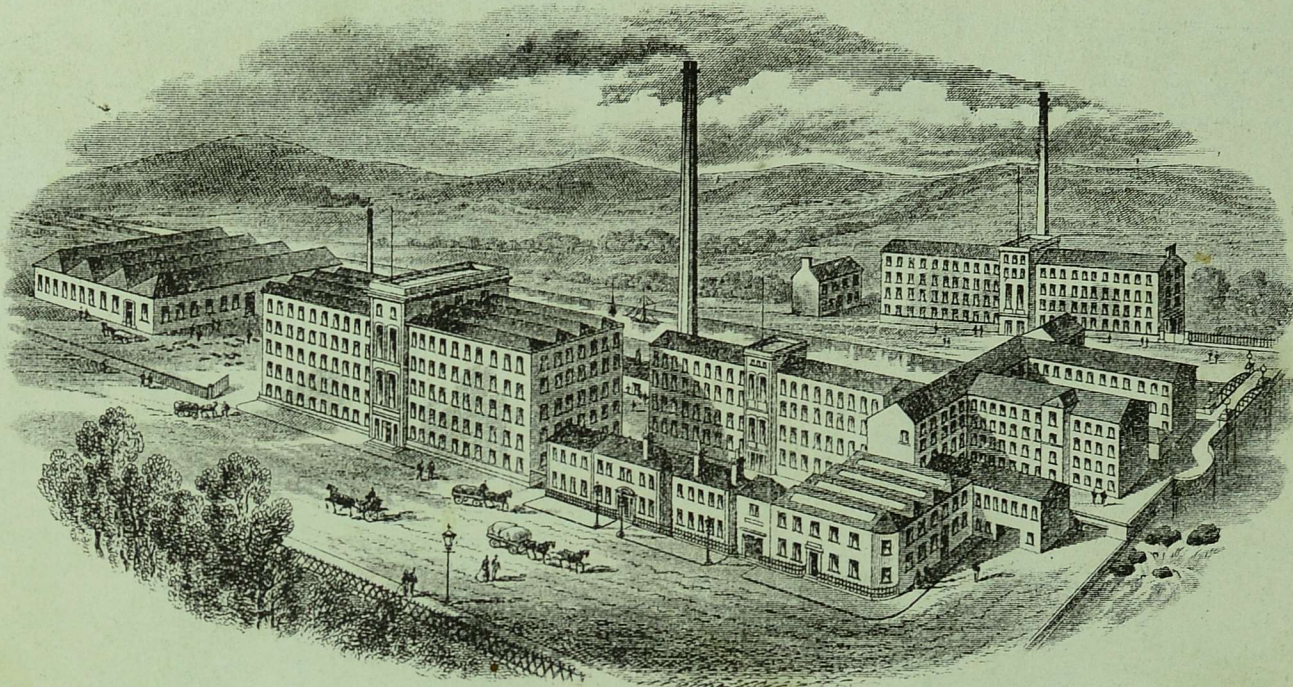
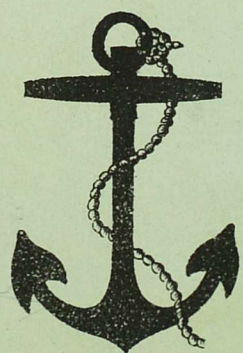


THE BULL-DOG.

THE Bull-dog takes its name from having in former days been trained to attack bulls, but these cruel and cowardly fights are now happily done away with.

It is well-known to be one of the bravest and most determined animals in the world. Though but small in height, its muscles are thick and firmly set, and in strength and courage no dog can match it.

Its disposition to fight is very strong, and shows itself plainly both in its face and form. When once it seizes hold of anything it is not easily made to let go.



FOR HAND AND MACHINE SEWING

BE SURE TO USE

CLARK & CO'S

EXTRA QUALITY BEST SIX CORD.

Extract from Report by some of the Leading
Machine Manufacturers.

**WHICH THREAD IS BEST FOR
SEWING MACHINES?**

“With a good Sewing Thread, the SEWING
MACHINE can execute any class of Needlework;
and, having thoroughly tested various makes, we
give the preference to

**CLARK & CO.'S EXTRA
QUALITY.”**

“This Superior Cotton is perfect in make, soft
finished, extra smooth, elastic, and very strong,
which, combined with freedom from knots, gives
it all the qualities requisite to the high speed,
beauty of stitch, and economy of time demanded
for all First-Class Machine Sewing.”

NOTE.—The BEST Thread for MACHINE
WORK is the BEST for HAND SEWING.

ANCHOR



COTTON

TO SELECT THREAD FOR SEWING-
MACHINES.

CLASS OF WORK TO SEW.	SIZE OF COTTON.
Very fine thin Muslins, Cambrics, Linen, &c.	Nos. 100 to 200 CLARK & CO.'S <i>Extra Quality.</i>
Very fine Calicoes, Linens, Linen Shirtings, fine Silk Goods, &c.	Nos. 70 to 100 CLARK & CO.'S <i>Extra Quality.</i>
Shirtings, Sheetings, Bleached Calicoes, Muslins, Silks, General Domestic Goods, and all Classes of General Work.	Nos. 50 to 70. CLARK & CO.'S <i>Extra Quality.</i>
All kinds of Heavy Calicoes, Light Woollen Goods, Heavy Silks, Seaming, Stitching, Dress- making, &c.	Nos. 30 to 50 CLARK & CO.'S <i>Extra Quality.</i>
Tickings, Woollen Goods, Trousers, Boys' Clothing, Corsets, Cloaks, Mantles, &c.	Nos. 24 to 40 CLARK & CO.'S <i>Extra Quality.</i>
Heavy Woollens, Tickings, Bags, Heavy Coats, Trousers, &c. Heavy Clothing generally.	Nos. 10 to 24 CLARK & CO.'S <i>Extra Quality.</i>