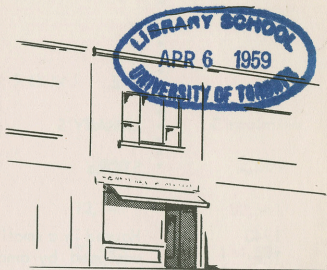
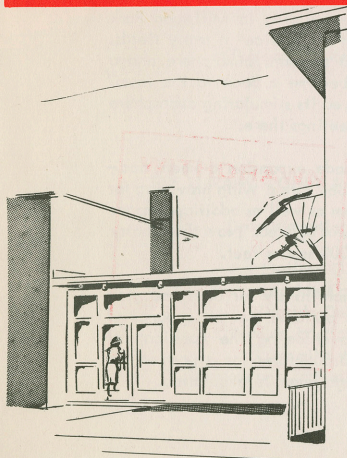


LEASIDE PUBLIC LIBRARY

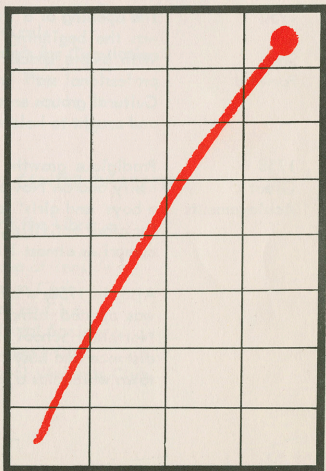
THROUGH 15 YEARS



1943



1958



THE

1950 A Step Forward

The opening of a fine building in Millwood Park was the beginning of its service in many fields. With ample space, a pleasant atmosphere and a professional staff it became a boon to the town. Cultural groups enjoyed its stimulating atmosphere and sought to hold meetings there.

Also, in 1958, a branch library for boys and girls was opened using a portable on the grounds of Northlea School, overcoming the handicap of distance and busy thoroughfares for a part of the town which has a large juvenile population.

COMPARISONS

	Population	Memberships	Books	Circulation
1943	9,000	569	1,056	2,584
		5,18		
1950	14,807	5,183	12,149	80,541
1958	16,409	8,865	27,923	144,536

72 Periodicals
400 Monareel Records for Circulation

THE LIBRARY - CULTURAL CENTRE OF LEASIDE

Groups meeting at the Library:

Art Gallery Group of Leaside
Leaside Camera Club
Leaside Debating Club
Leaside Horticultural Society
University Women's Club
Business and Professional Women's Club

.....

LEASIDE PUBLIC LIBRARY

Staff

Mrs. Eleanor MacAlpine
Chief Librarian

Miss Mary Sheridan
Librarian in charge of Boys' and Girls' Dept.

Miss Grace Miller

Mrs. Alberta Chapman

Mrs. Phyllis Orton

Mrs. Eva Blakeley

Mrs. Del Humphrey

Mrs. E. M. Van Dusen

Board

K. E. Bryant, Chairman

H. W. Forster

Frank N. Comper

Mrs. H. K. McLaughlin

Mrs. K. M. McIntyre

Mrs. Lois Panter

W. Vernon Trott

Charles R. Walton

Mayor Charles Hiscott (ex officio)

D. A. MacLeod, Secretary-Treasurer