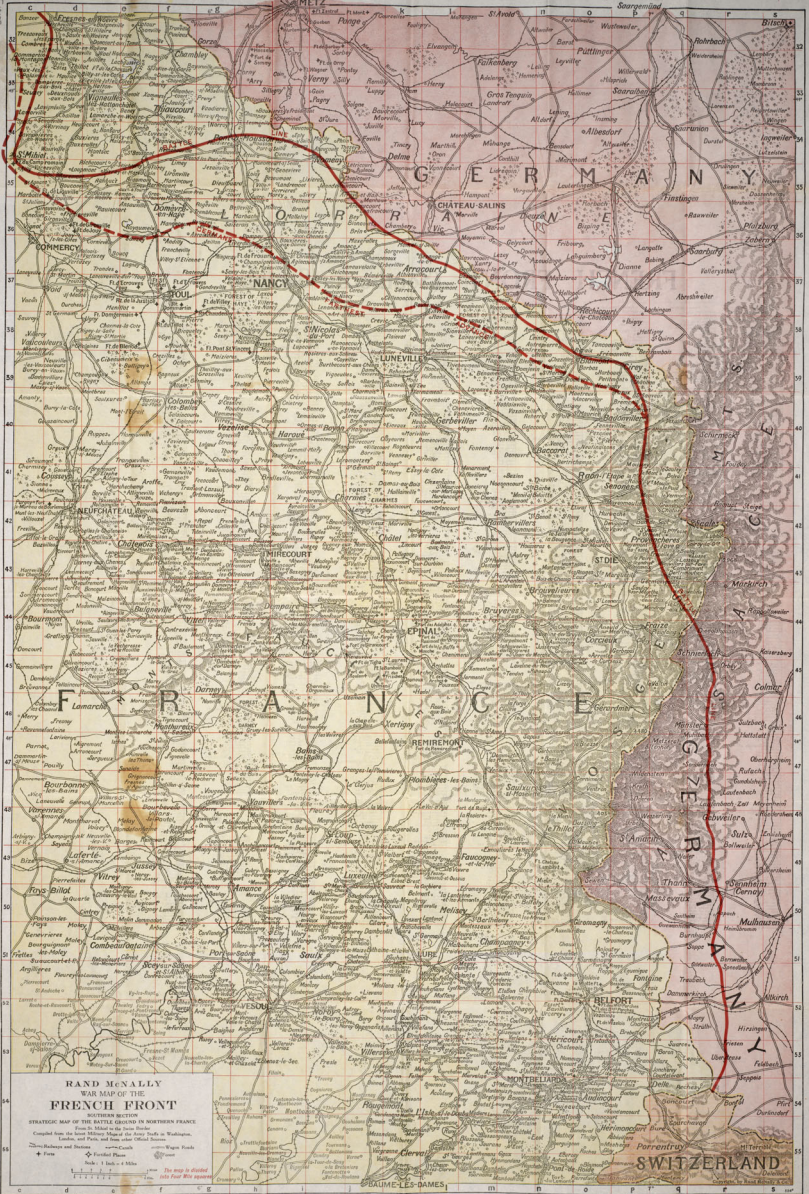


**RAND McNALLY
WAR MAP OF THE
FRENCH FRONT**

NORTHERN SECTION
STRATEGIC MAP OF THE BATTLE ZONE IN NORTHERN FRANCE
Compiled from the latest Military Maps of the Army Staffs in Western
France and from the latest French Official Reports.
—Cavalry —Wagon Tracks
—Rivers —Forts
Scale: 1 inch = 4 Miles
This map is published
under the name of the author.



RAND McNALLY
WAR MAP OF THE
FRENCH FRONT
 STRATEGIC MAP OF THE SOUTHERN SECTION
 From the Military Intelligence Division, War Department
 Compiled from the best available sources, including
 London, and Paris, and other Allied sources.
 + French Positions
 * German Positions
 • Neutral Places
 Scale: 1 Inch = 40 Miles
 This map is adapted
 into four War Maps