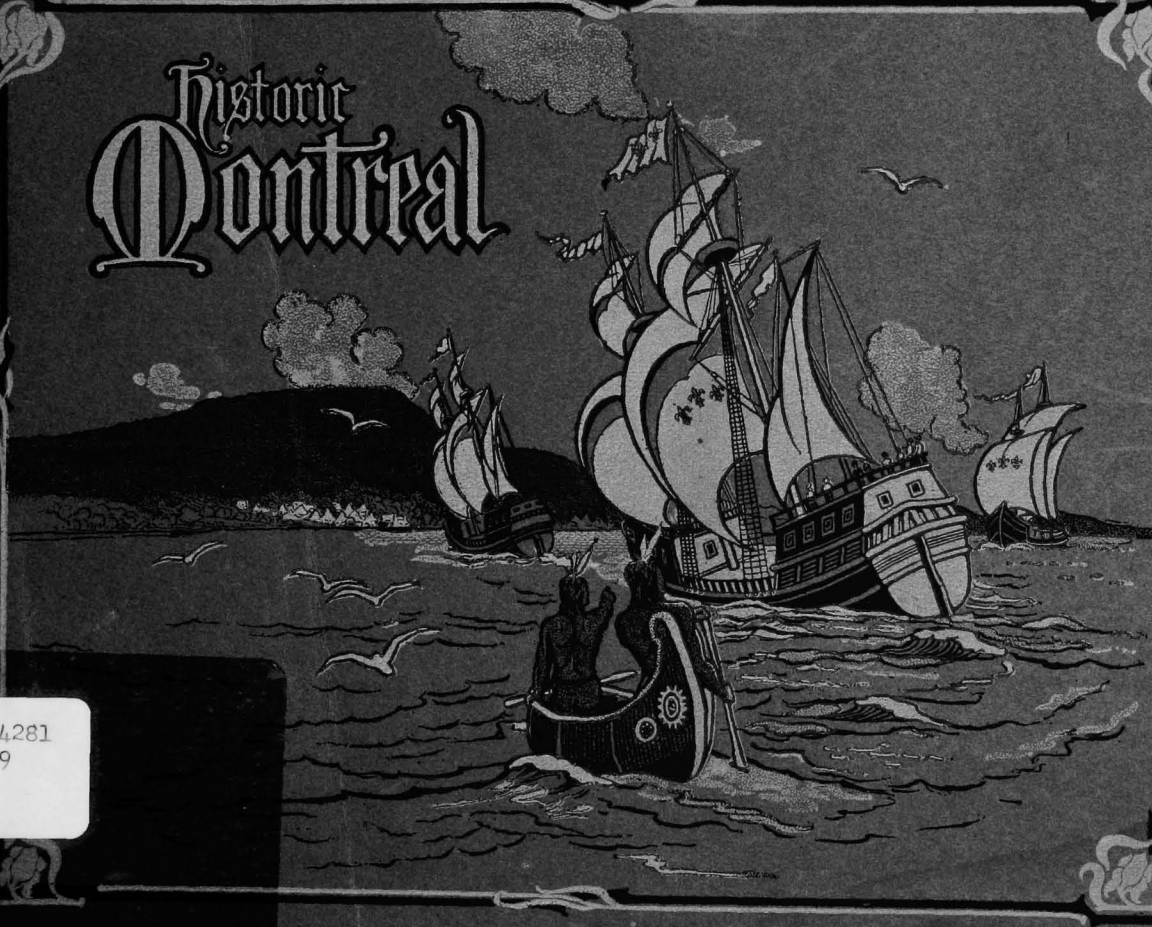




# Historic Montreal



917.14281  
H39



# HISTORIC MONTREAL



Canada's Metropolis, the Chief City of the Stranger, its places of historic and romantic interest, its magnificent architecture, its parks and squares--seen in summer garb of green and winter's robe of snow.

Publisher of

**PHOTO' ALBUMS**

*of*

SCENIC CANADA, QUEBEC,  
TORONTO, HALIFAX,  
ST. JOHN,  
EVANGELINE LAND,  
CAPE BRETON,  
CHARLOTTETOWN,  
NEWFOUNDLAND,  
MUSKOKA, PORT ARTHUR,  
SAULT STE. MARIE

**PUBLISHED**

*by*

**W. G. MacFarlane**  
**TORONTO**

MACKINAC ISLAND,  
WINNIPEG, CALGARY,  
ROCKY MOUNTAINS,  
BRITISH COLUMBIA,  
KOOTENAY COUNTRY,  
VICTORIA,  
VANCOUVER, TACOMA,  
PORTLAND (Oregon),  
MOUNTAINS and RIVERS  
of the  
GREAT NORTH-WEST, Etc.



From Photos by  
WM. NOTMAN & SON  
14 Phillips Square  
MONTREAL



MAISONNEUVE MONUMENT.

## HISTORIC MONTREAL



CANADA is by nature the great tourist country of the continent. She is endowed with a climate and scenic beauty that must commend her to the tens of thousands of city-dwellers in the United States. In the cool waters of her ten thousand leagues of river, lake and shore the myriads from the noisy urban thoroughfares can find a cool retreat and renewal of life. In this, the proudest part of Britain's Imperial Domain, are found the Norway, the Rhine, and the Switzerland of the old world—landscapes and waterscapes that for beauty and magnificence vie with the most famous places of Europe. And then over all is thrown the veil of romance, giving greater

depth and color to the picture, and imparting an additional charm. In this land of great things were wrought out some of the most momentous events in the history of the western world, and the story has a picturesqueness all its own—such charm as can only be found where “la belle France” gives color and sprightliness to the scene. The days of the *Ancien Regime* have a flavor of romance and an enchantment



SEMINARY OF ST. SULPICE, AND OLD CLOCK.

and the sombre hue of their Indian associates. The roving, adaptive *coureurs de bois*, painted and plumed like their Indian mates, ply their paddles, or, snow-shoe shod, swing in graceful stride over the snow-bound plain. Radiant is the picture, too, with the zeal-inspired, devoted faces of the martyr priests, drawn and set by countless tortures, but lit up with noble purpose. Erect appears the grandly majestic figure of the red man; eloquent and subtle around the council fire; careless of life, and reckless in courage on the warpath—a wonderful character, oftentimes a god, and in a flash changing to the grossness of a savage and the fickleness of a child.

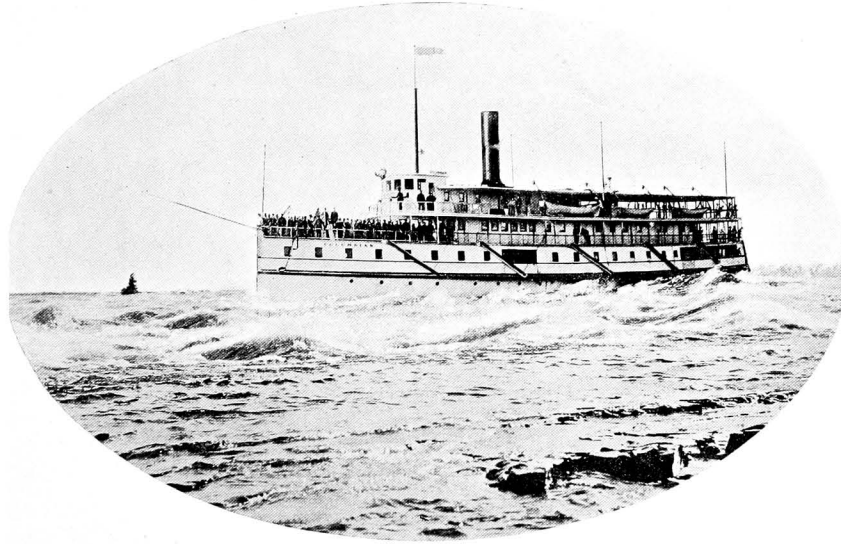
Parkman understood the French in the New World; he understood the

that recall in fullest degree the legendary period of European story. Fit subject matter were these stirring times for the pen of one who has been termed the most rarely gifted historian of modern times. Under Parkman's brilliant touch, great and glowing pictures grow of the pomp and valor of old France transplanted amid a forest wilderness. The gay *noblesse*, with easy carriage and courtly air, move to and fro, their rich robes and glistening arms contrasting curiously with the virgin green of the forest



OLD WINDMILL (Lachine Road).

red man as no one else ever can, and he who would wish to know the true charm of the atmosphere of French Canada should draw deep draughts of inspiration from the keeper of its wampum. He will then look



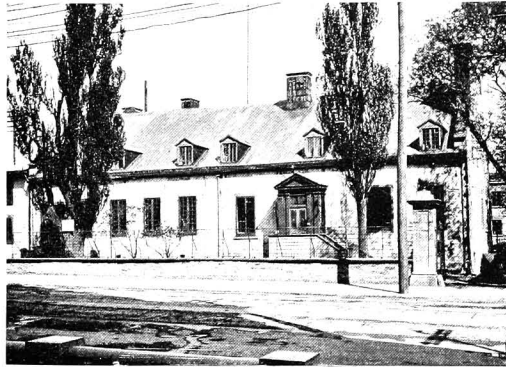
STEAMER COLUMBIAN SHOOTING LACHINE RAPIDS.

upon the historic places of this marvellous region with a renewed interest, and he will see the French-Canadians, the descendants of the pioneers and heroes of two centuries ago, in a new light.

Though now a great thriving metropolis, with a bright future opening up before it as a city of export,

and as a worthy rival of New York, Montreal still has its picturesque side, and is still the chief resort in Canada for the tourist.

Montreal is a city of churches, and in fact throughout the whole Province of Quebec the Roman Catholic Church is exceedingly wealthy. The Seminary of St. Sulpice, in Montreal, enjoys a princely revenue, and it is but a few decades since the feudal system finally lost its foothold on this continent, and the Seminary was reimbursed for relinquishing the emoluments and honors of a large feudal proprietorship. The home of the Sulpicians faces



CHATEAU DE RAMEZAY.

Place d'Armes, and was erected in 1710, being now used for the offices of the Order. Adjoining is their great Cathedral of Notre Dame, one of the noblest churches in America, capable of seating fifteen thousand people ; while there swings in one of its towers " le Gros Bourdon," the largest bell in America. The frescoes and paintings in this church, as well as in Notre Dame de Lourdes and in the Church of the Gesu are beautiful, and worthy of long contemplation.

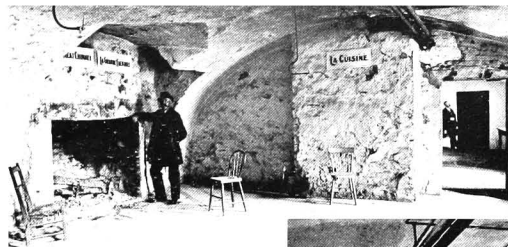
In Place d'Armes, immediately opposite the Cathedral of Notre Dame, stands a magnificent bronze statue of Maisonneuve, the founder of Montreal. The granite pedestal bears the inscription: " Paul de Chomedey de Maisonneuve, Fondateur de Montreal, 1642." The pedestal rests upon a foundation, and displays bas-reliefs representing Maisonneuve killing an Indian chief on the very site of the monument ; the first mass celebrated in the colony ; the meeting of the band of religious enthusiasts, at which it was decided to found the town of Ville Marie de Montreal, and the gallant defence of the young colony by the hero Dollard at the Long Sault.

About this spot stirring scenes were enacted and grand figures moved – the intrepid Jacques Cartier, the illustrious Champlain ; indomitable La Salle, the discoverer of the Mississippi and one of the greatest explorers who ever lived ; Du L'Hut, from whom Duluth is named ; Cadillac, the founder of Detroit ; and Bienville, the founder of New Orleans.



McGILL UNIVERSITY AND GROUNDS.

Near Place d'Armes is the quaint old Chateau de Ramezay facing Jacques Cartier Square and full of historic associations. It was erected in 1722, and in early days, as the seat of government, listened to the wisdom of Montcalm, Vaudreuil, Haldimand, Elgin and Benjamin Franklin. It now contains a valuable collection of historical portraits and relics, and is an object of special interest to tourists.



that threads one of the richest areas in the world, the commercial importance of Montreal is considerable, and its possibilities tremendous. The completion of the canal system, giving a fourteen-foot waterway from Chicago or Duluth to Montreal, is an even which may be classed in world-wide importance with the completion of the Suez Canal.

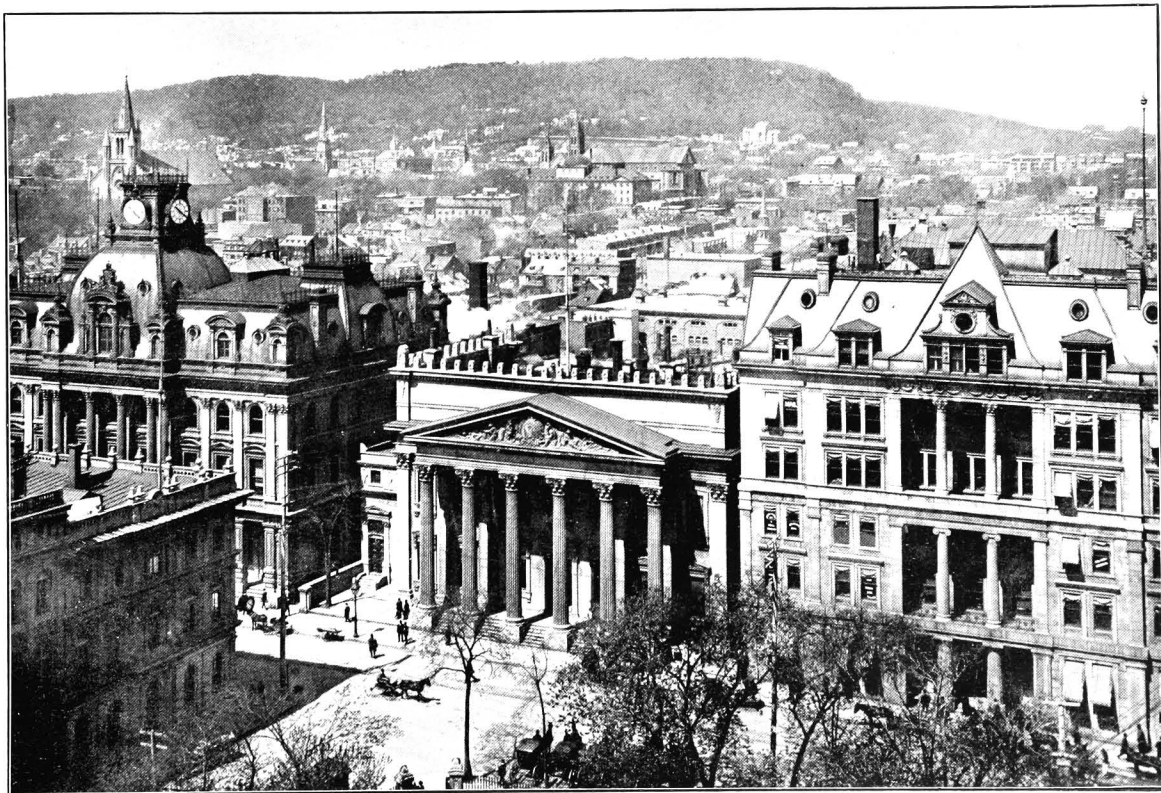


Montreal's chief pride is her Mount Royal, which contains one of the most beautiful natural parks on the continent. The city rises on a series of terraces from the bank of the St. Lawrence, with the mountain for a back-ground, and visitors to the city in summer make it a point to climb the mountain to enjoy the magnificent view of river, lake, canal and distant mountain.

Located on one of the greatest waterways of the world, a highway

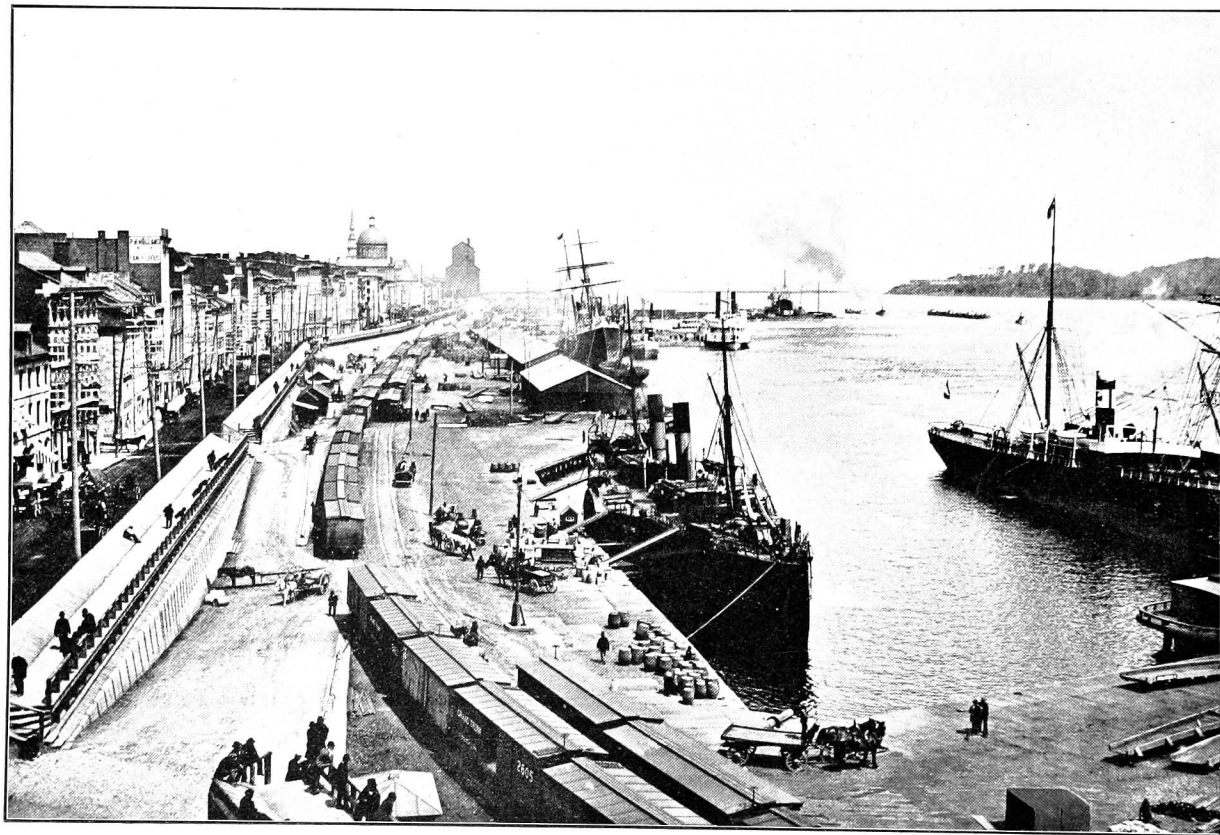


THE VAULTS OF THE CHATEAU DE RAMEZAY.



MONTREAL, FROM NOTRE DAME TOWER.





MONTREAL HARBOR.



ST. HELENS ISLAND

VICTORIA BRIDGE



CITY HALL

COURT HOUSE

NOTRE DAME CATHEDRAL

ST. JAMES' CATHEDRAL

WINDSOR HOTEL

### PANORAMIC VIEW OF MONTREAL FROM THE MOUNTAIN

This is one of the most sublime spectacles on the Continent. Below are the massive piles of the City embowered in foliage, beyond glisten the waters of the St. Lawrence spanned by the Victoria Bridge. From the further shore spread away fertile farm lands, while far in the distance rise the Green Mountains of Vermont and the White Mountains of New Hampshire.







DOMINION SQUARE.



VICTORIA SQUARE.

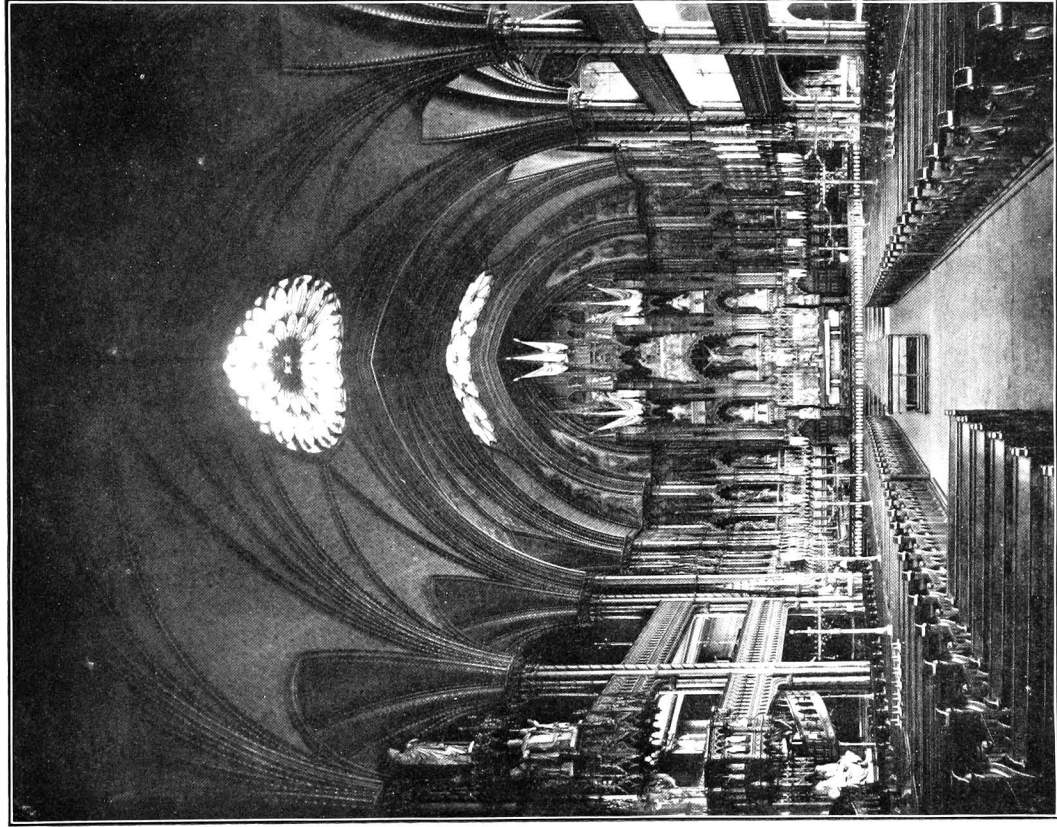


ST. JAMES STREET.

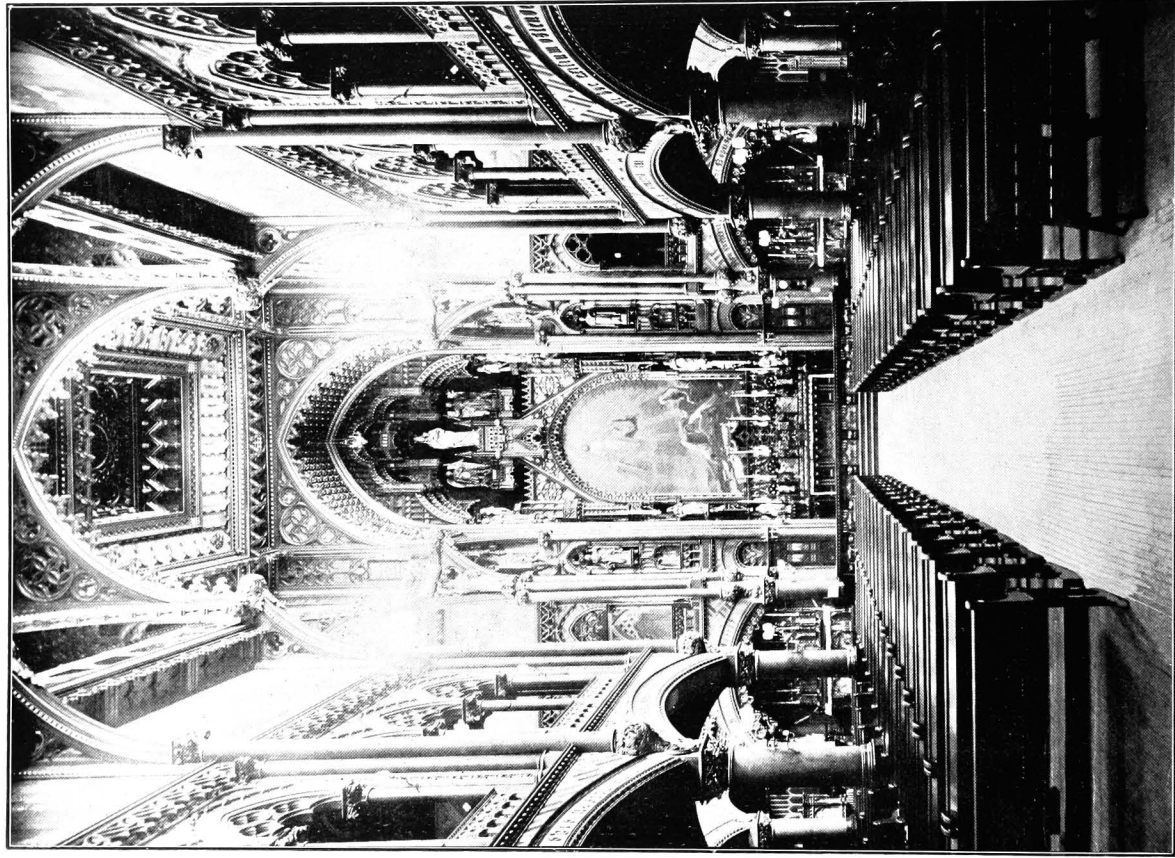


NOTRE DAME CATHEDRAL.





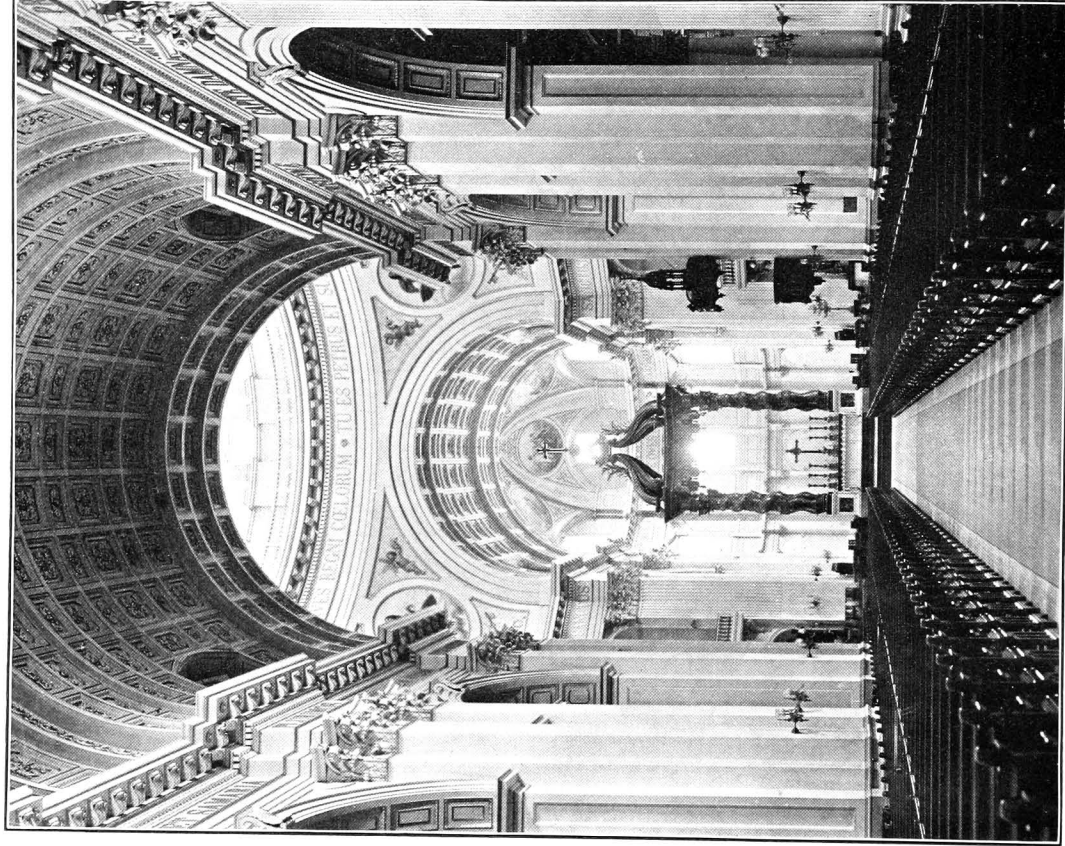
INTERIOR NOTRE DAME CATHEDRAL.



NOTRE DAME CHURCH, SACRED HEART CHAPEL.



PLACE D'ARMES AND NOTRE DAME CHURCH.



INTERIOR ST. JAMES' CATHEDRAL.



ST. JAMES', ROMAN CATHOLIC CATHEDRAL—MODELLED AFTER ST. PETER'S AT ROME.

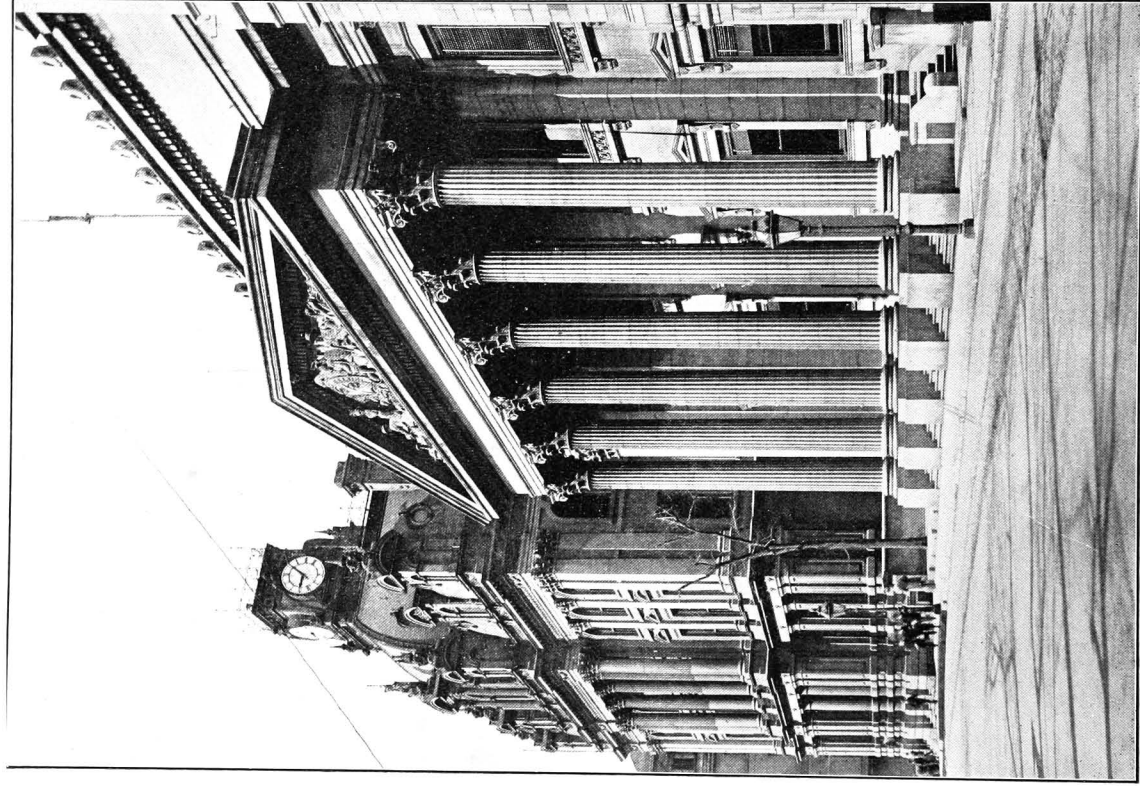


DOMINION SQUARE, LOOKING TOWARDS C.P.R. GENERAL OFFICES.





SHERBROOKE STREET.

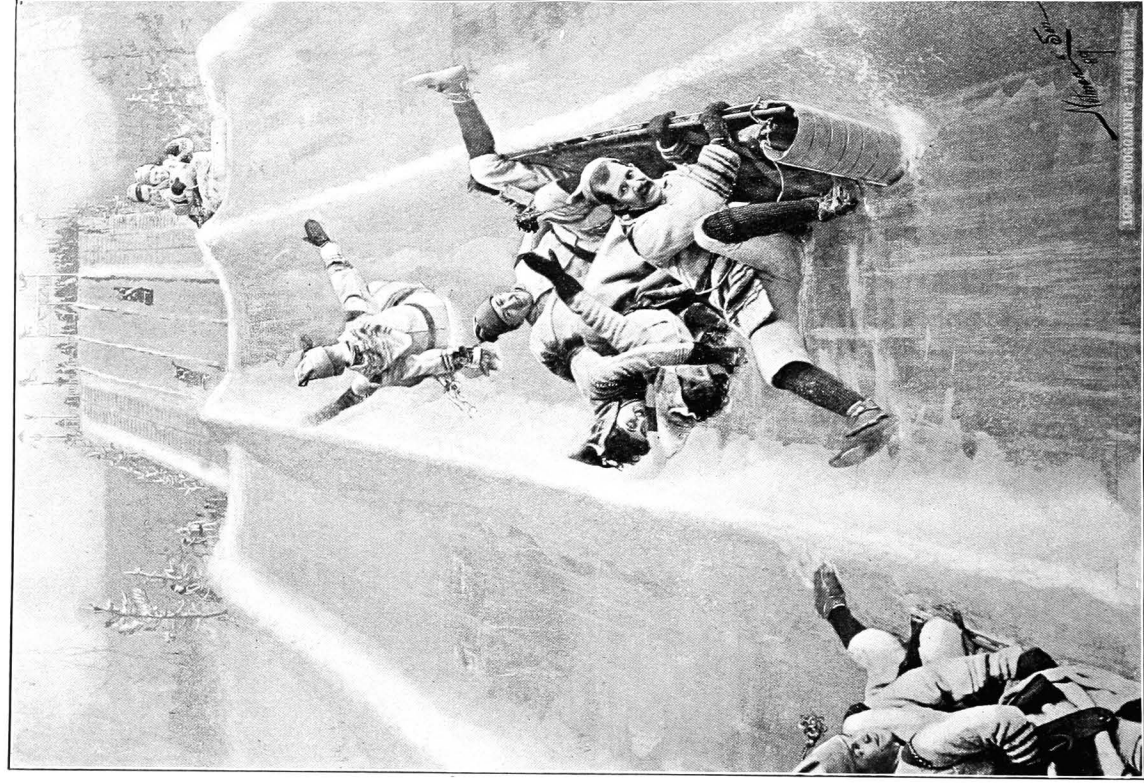


POST OFFICE AND BANK OF MONTREAL.





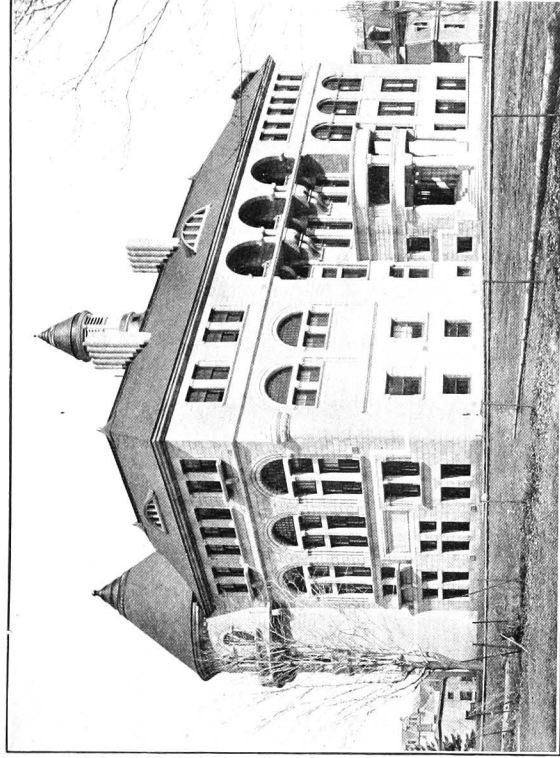
CITY HALL.



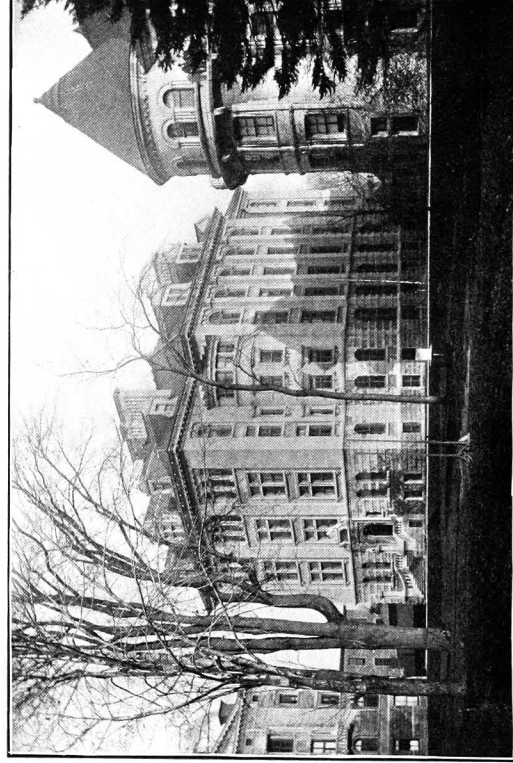
TOBOGGANNING—THE SPILL.



A WINTER SCENE ON PEEL STREET.



PHYSICS BUILDING, MCGILL UNIVERSITY.



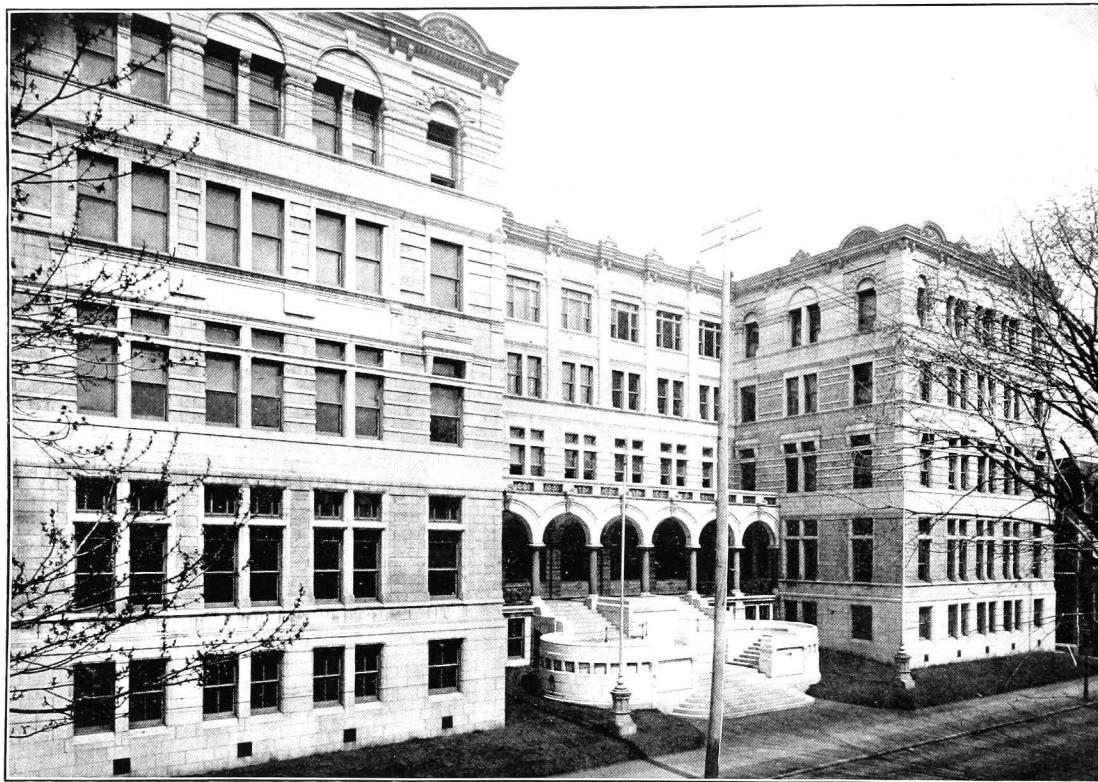
MINING AND CHEMISTRY BUILDING, MCGILL UNIVERSITY.



Arts Building.  
Medical School.

MCGILL UNIVERSITY.

Redpath Museum.  
MacDonald Engineering.

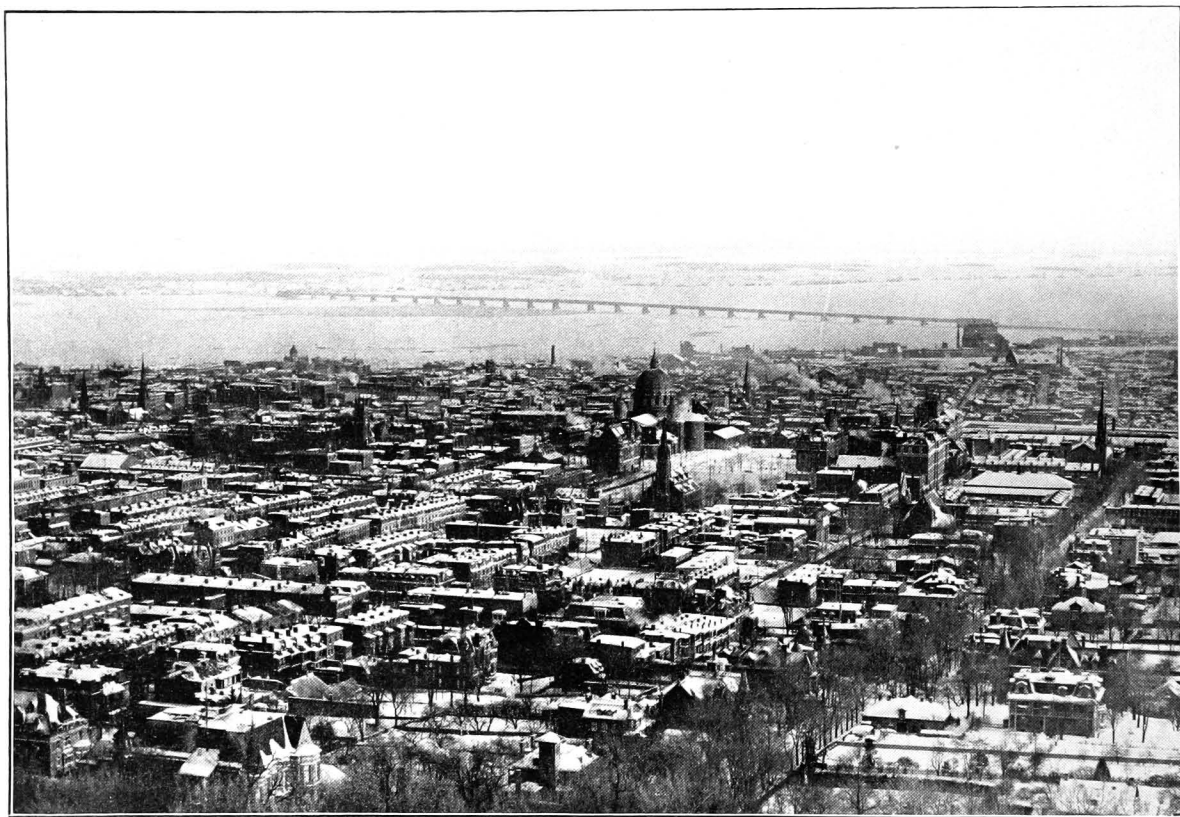


LAVAL UNIVERSITY.



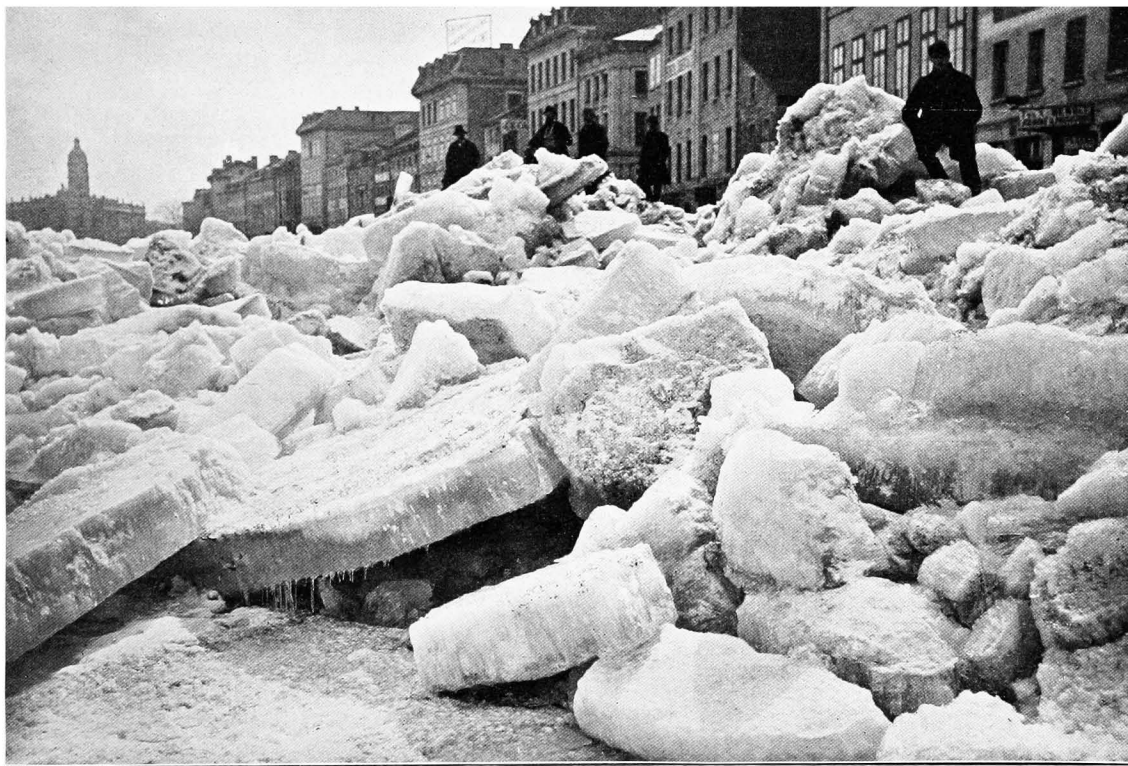
BANK OF MONTREAL.



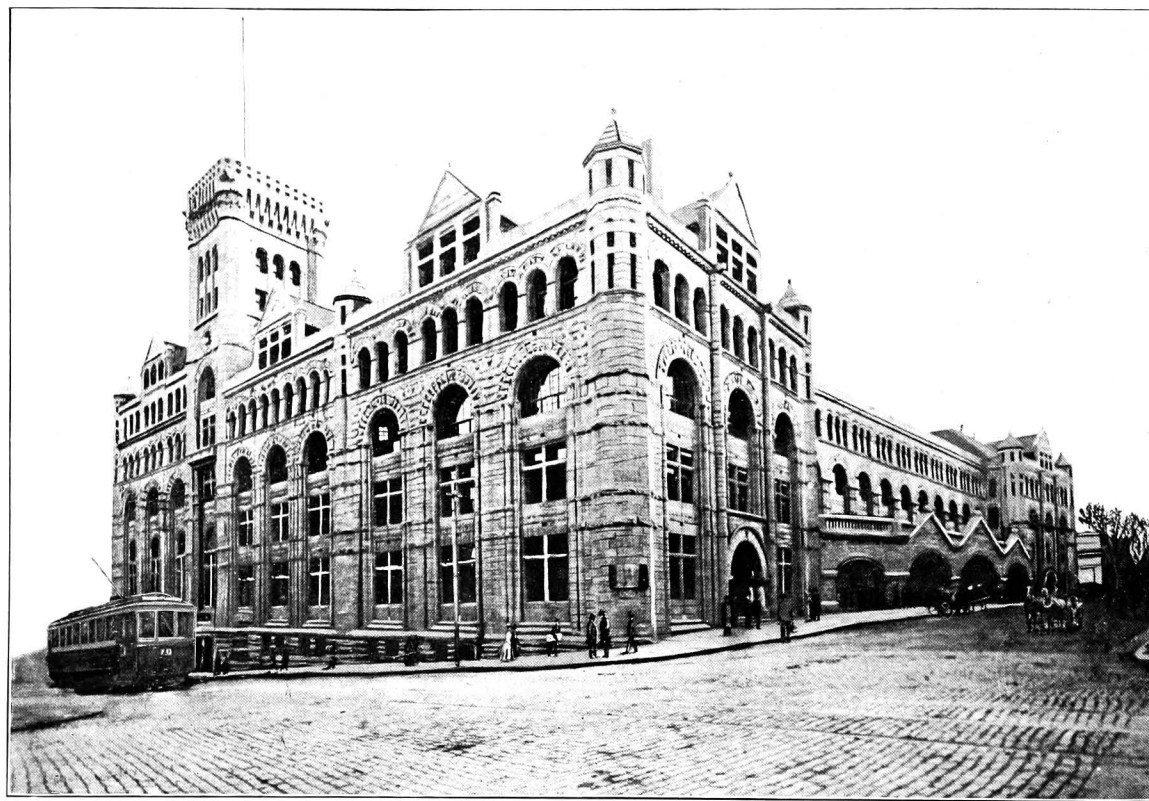


MONTREAL, FROM THE MOUNTAIN, IN WINTER.





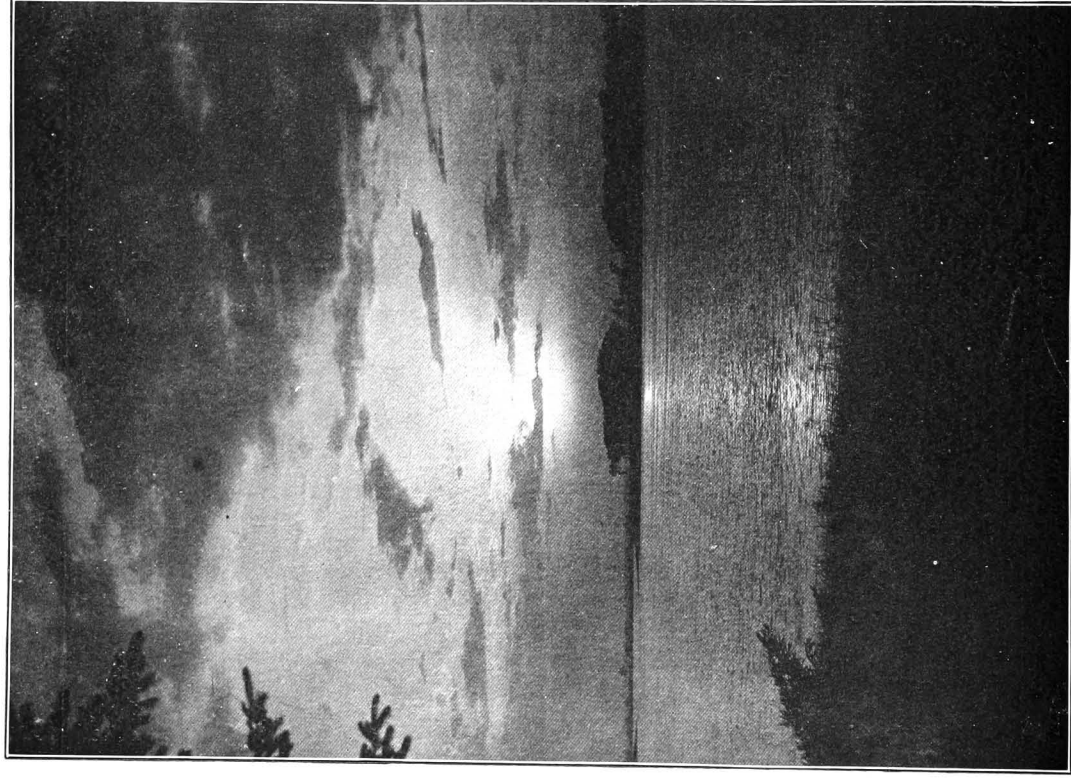
THE ICE SHOVE, HARBOR.



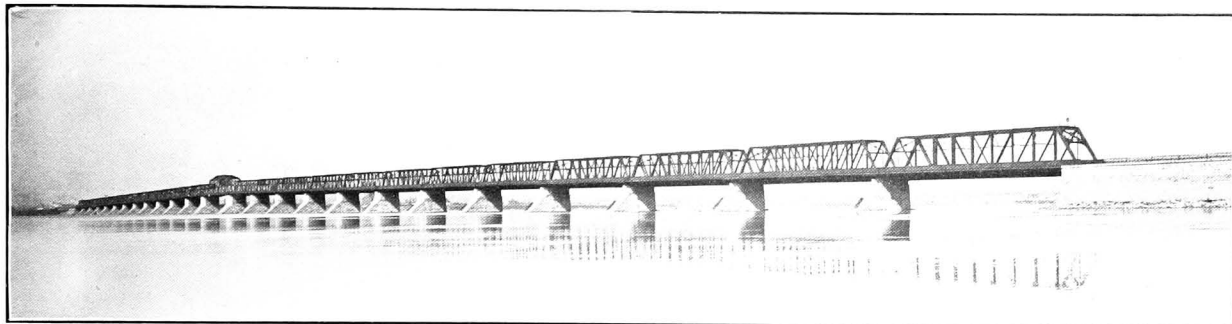
CANADIAN PACIFIC RAILWAY'S WINDSOR STREET STATION.



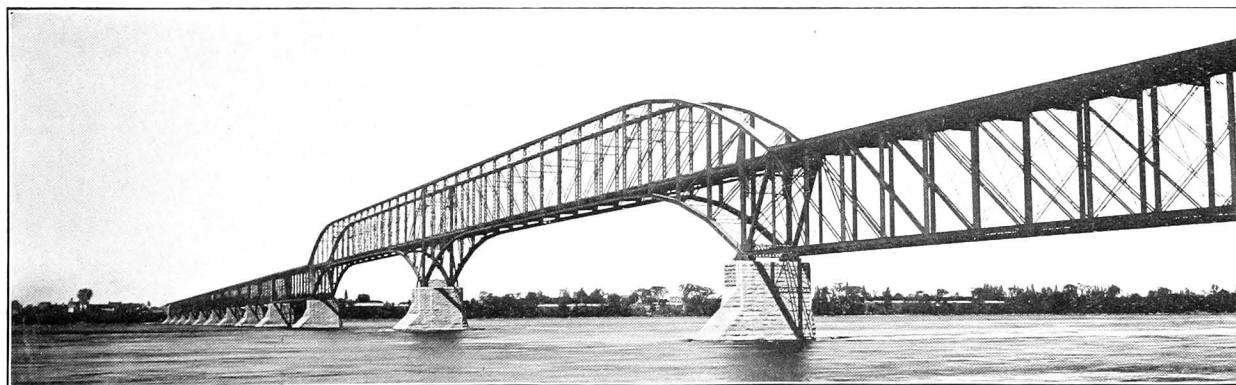
GENERAL OFFICES OF THE GRAND TRUNK RAILWAY.



SUNSET ON THE ST. LAWRENCE.



THE FAMOUS VICTORIA BRIDGE (GRAND TRUNK RAILWAY).



THE CANADIAN PACIFIC RAILWAY BRIDGE ACROSS THE ST. LAWRENCE.

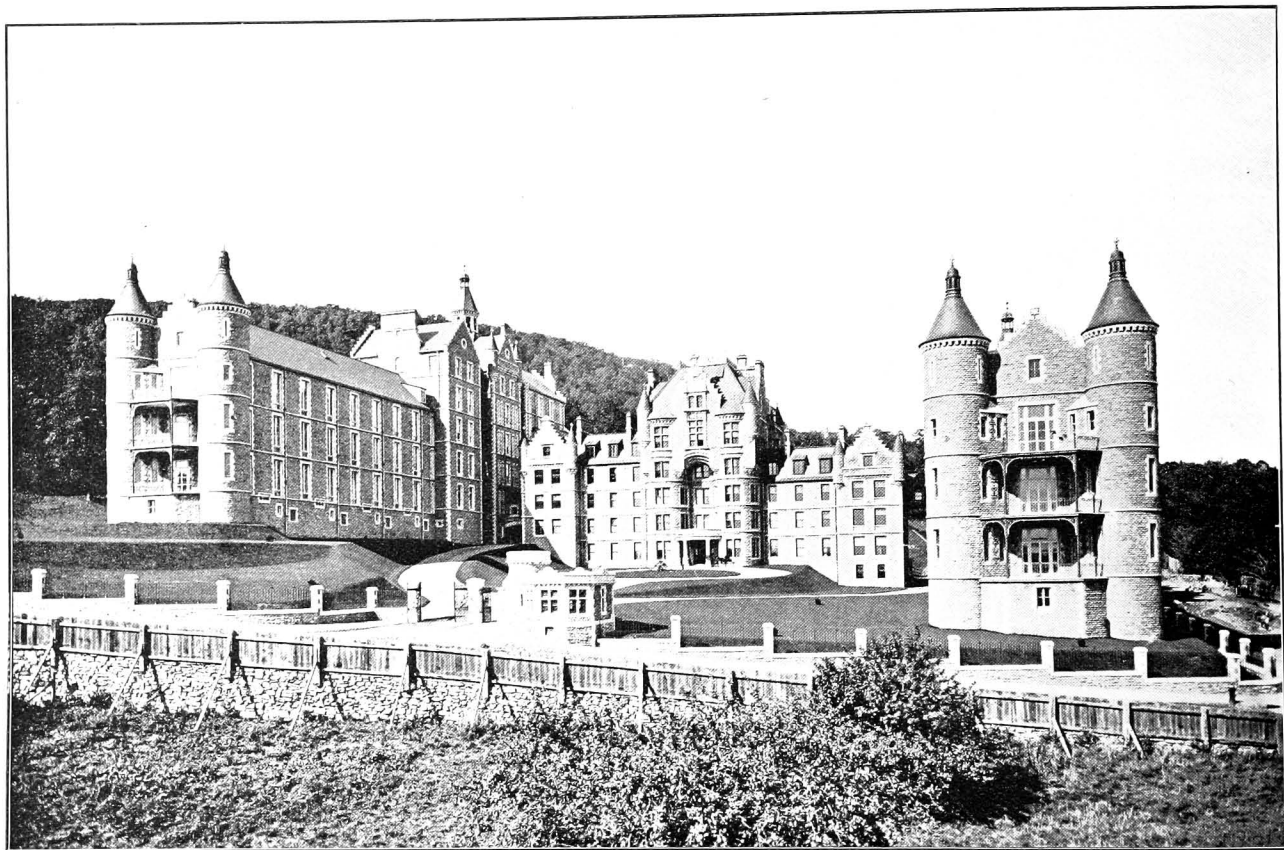


WINDSOR HOTEL, AND SIR JOHN A. MACDONALD MONUMENT.



PLACE VIGER HOTEL.

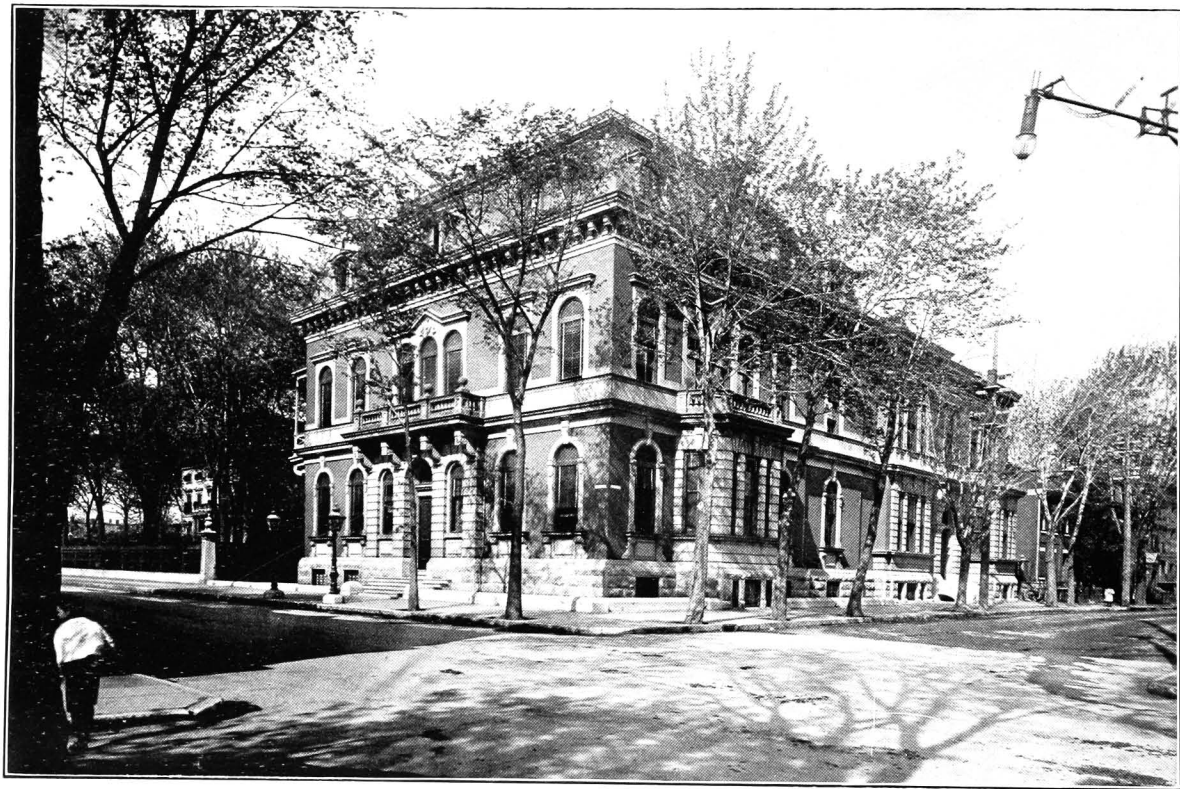




ROYAL VICTORIA HOSPITAL.



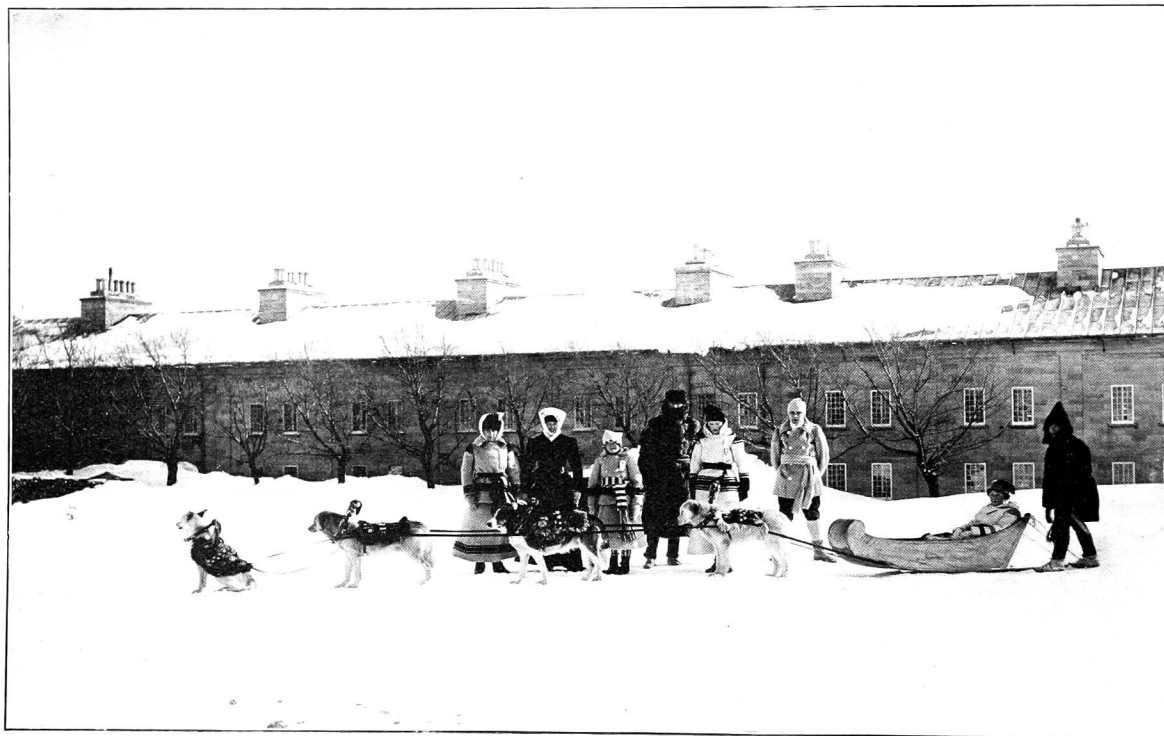
ST. JAMES', METHODIST.



THE ST. JAMES' CLUB.



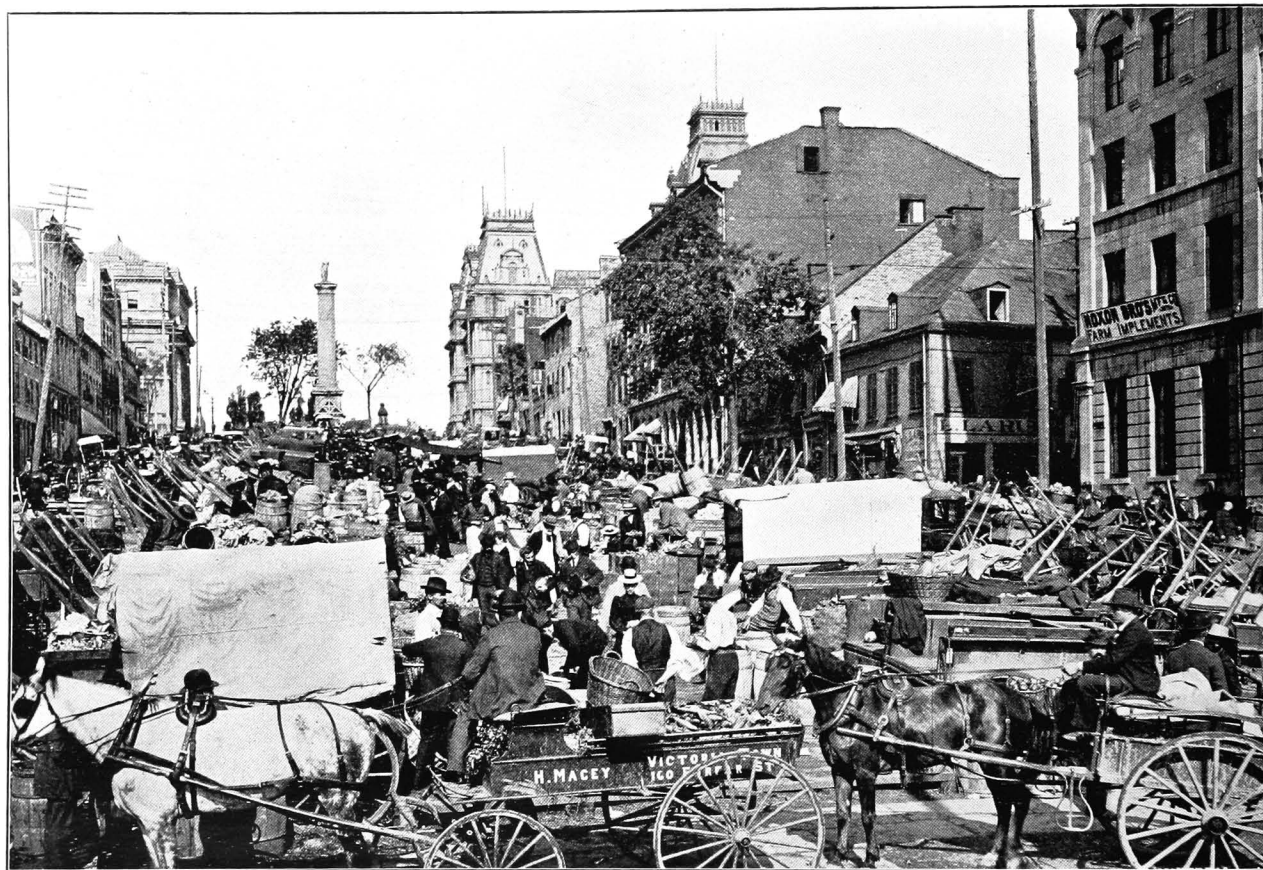
THE Y.M.C.A.



LORD AND LADY MINTO WITH DOG SLED.

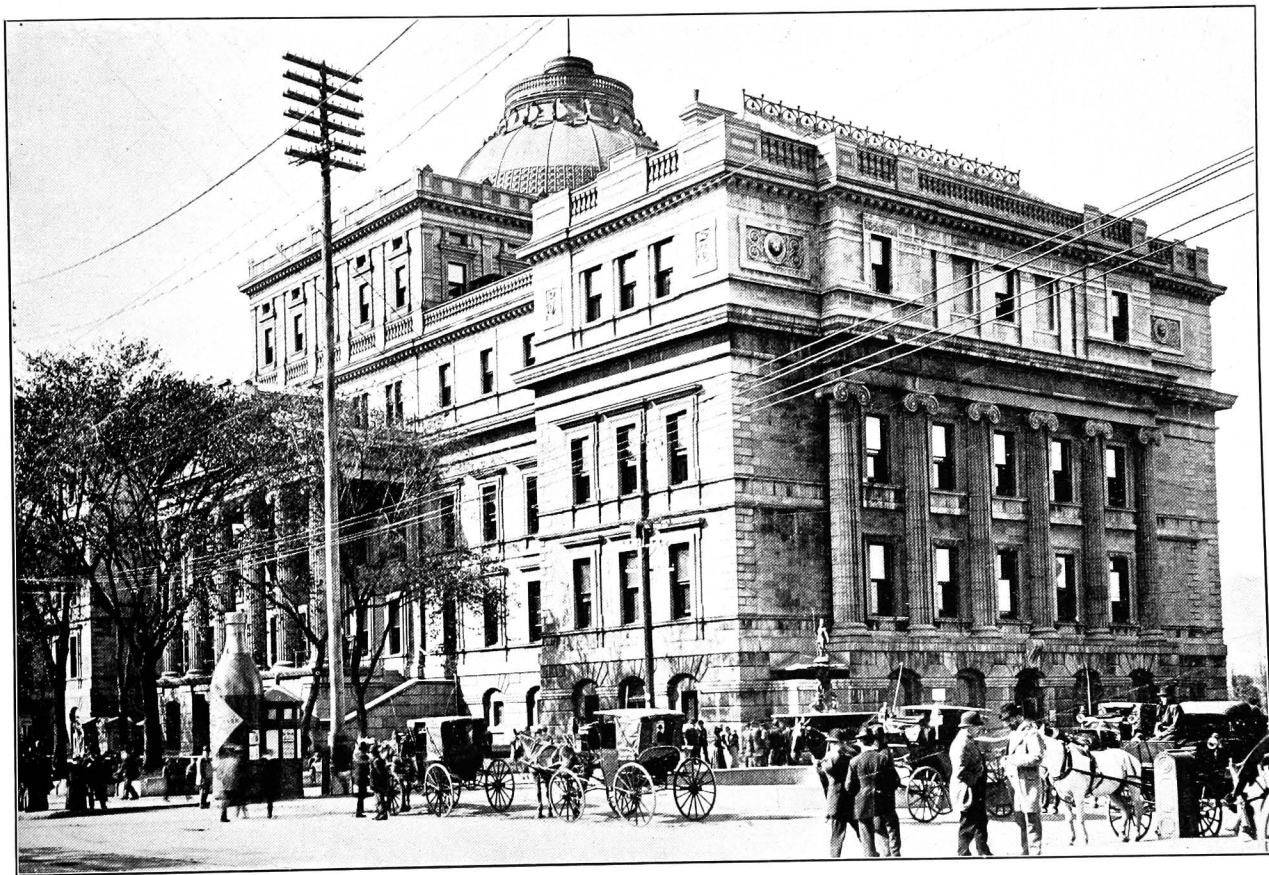


WINTER SPORTS—SKI RUNNING AND TOBOGGANNING.

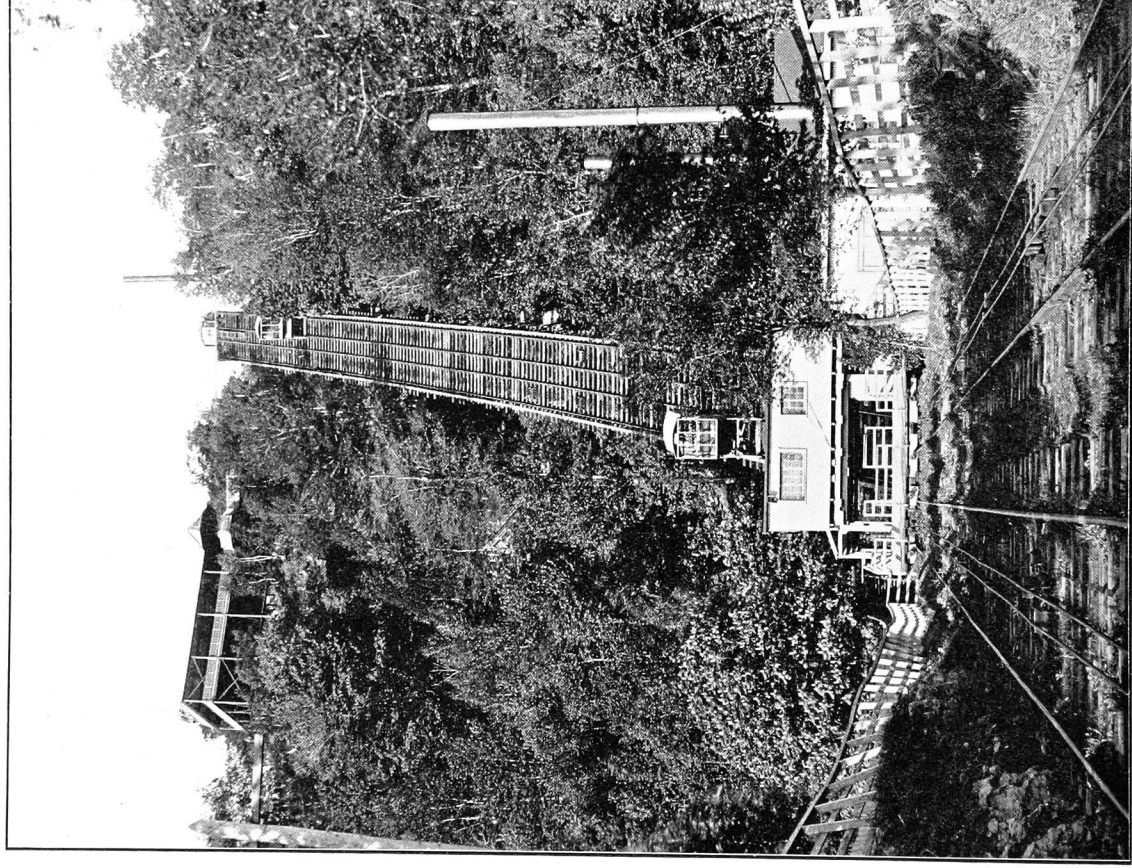


JACQUES CARTIER SQUARE AND MARKET.





COURT HOUSE.



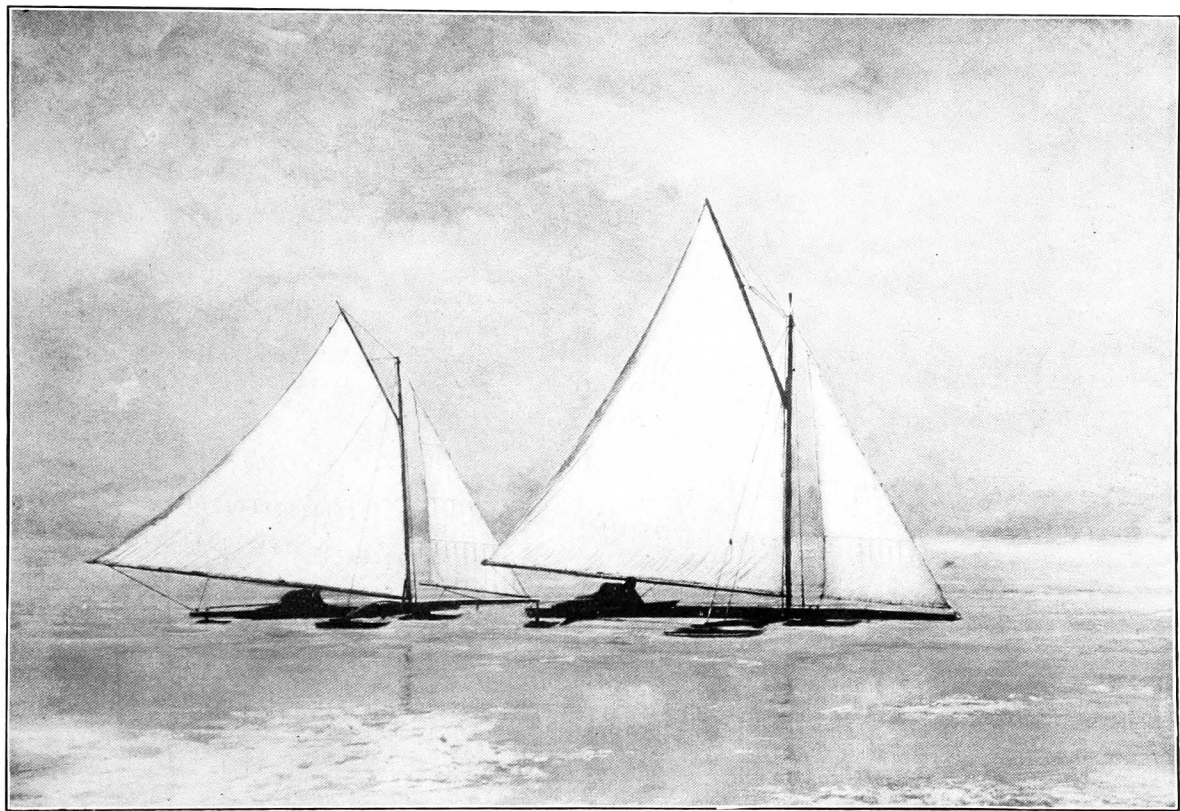
MOUNT ROYAL PARK ELEVATOR.



IN MOUNT ROYAL PARK.



TANDEM CLUB DRIVING ON THE MOUNTAIN.



ICE YACHTING.



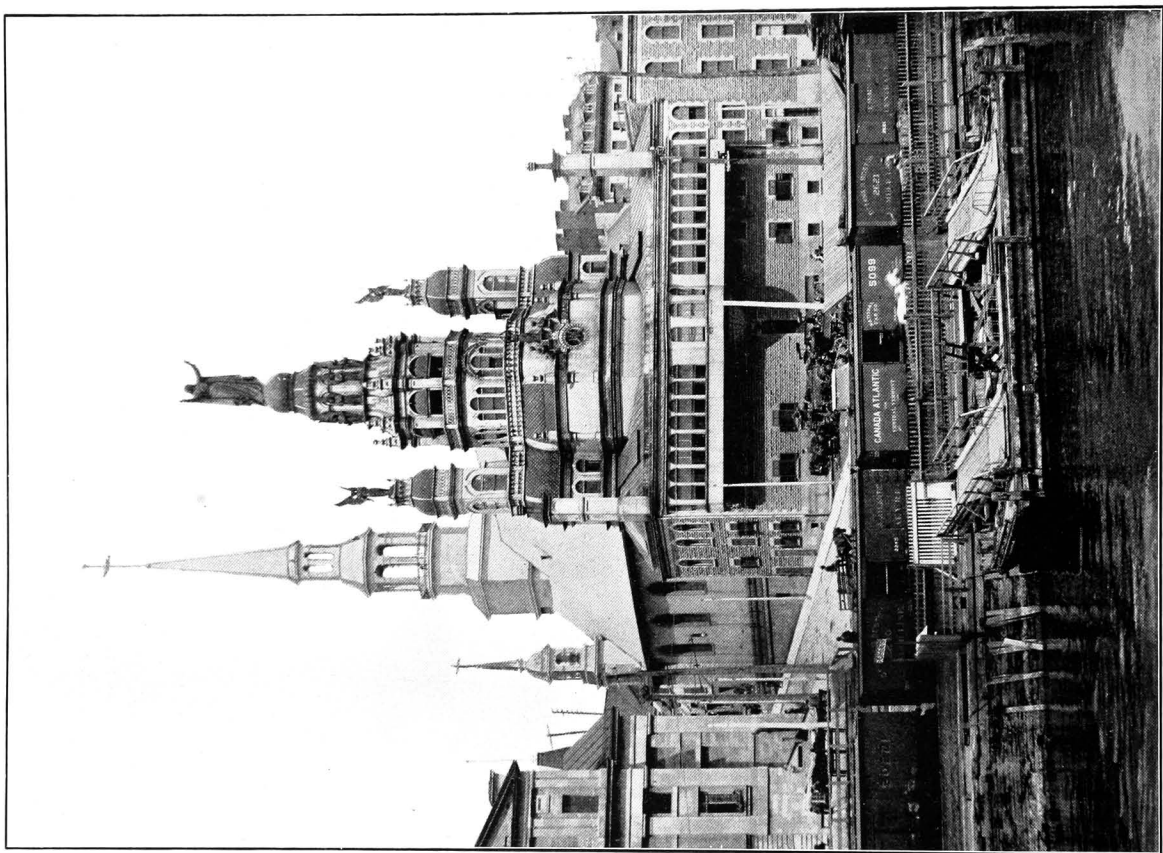
INTERIOR  
NOTRE DAME  
DE LOURDES.



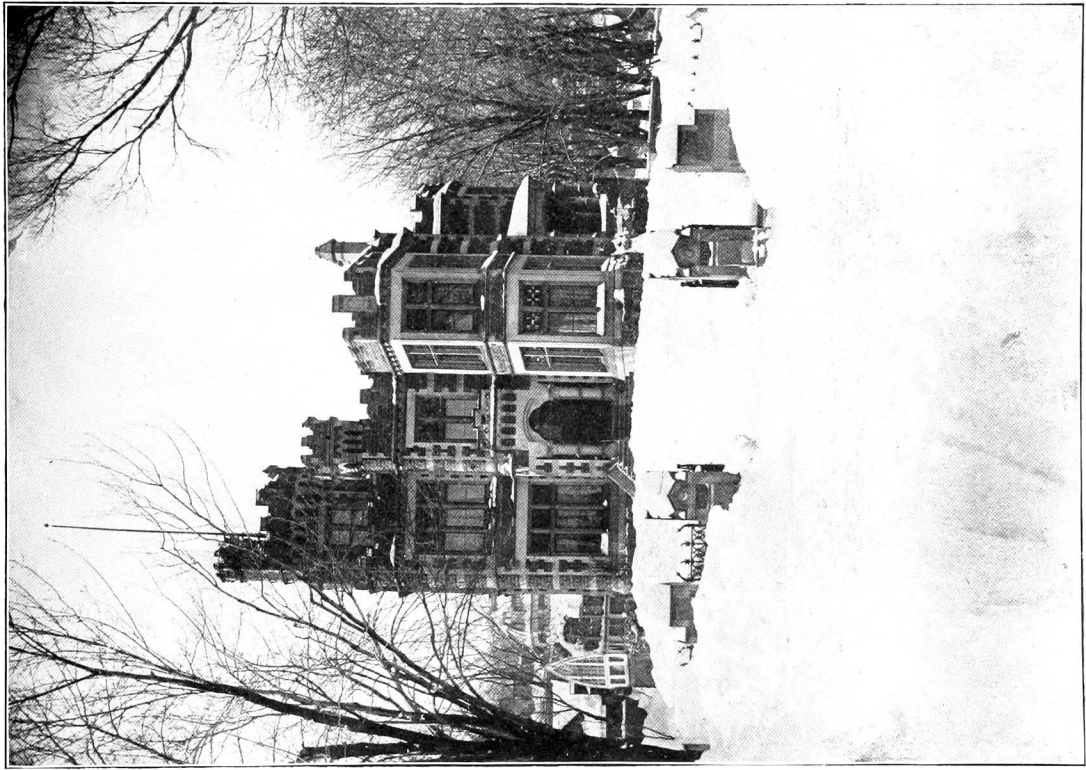


NOTRE DAME DE LOURDES.

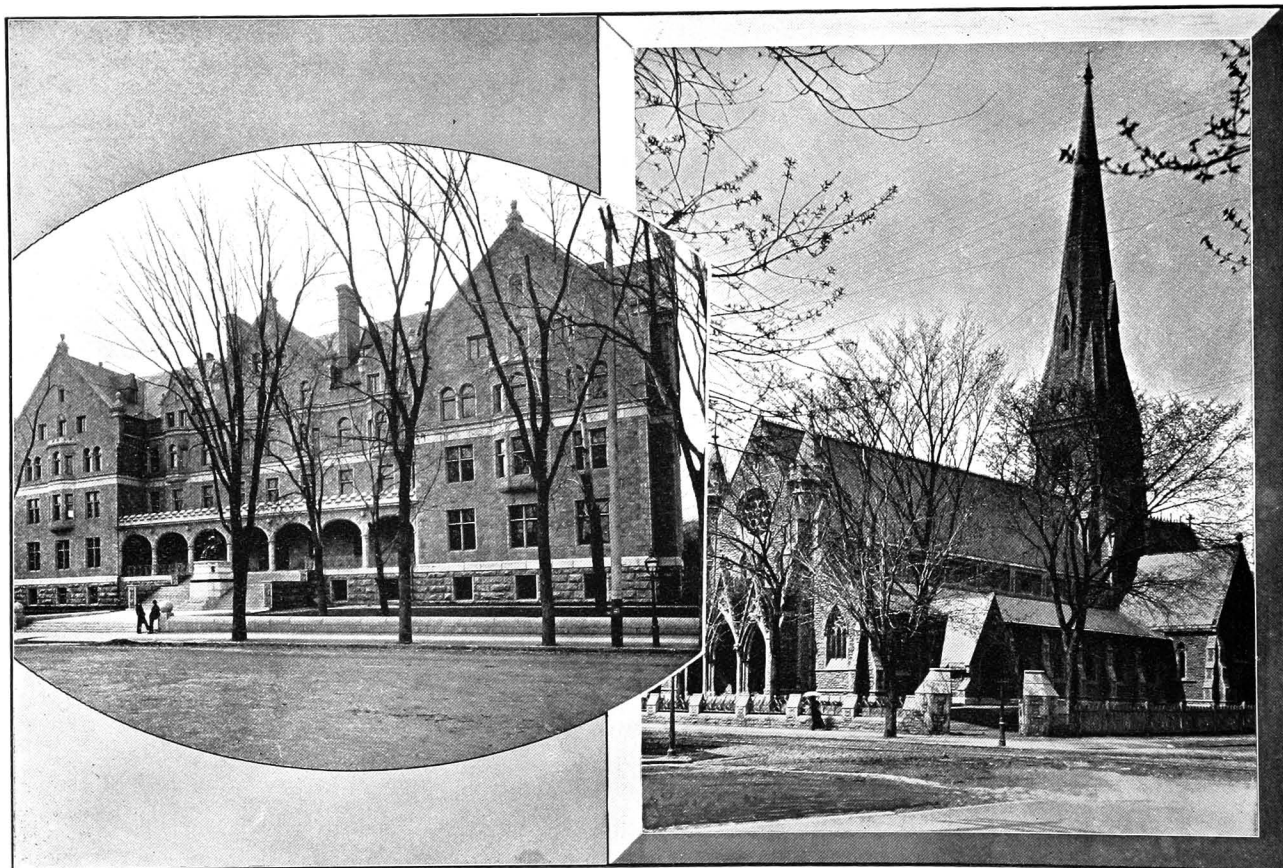




CONSECOURS CHURCH.



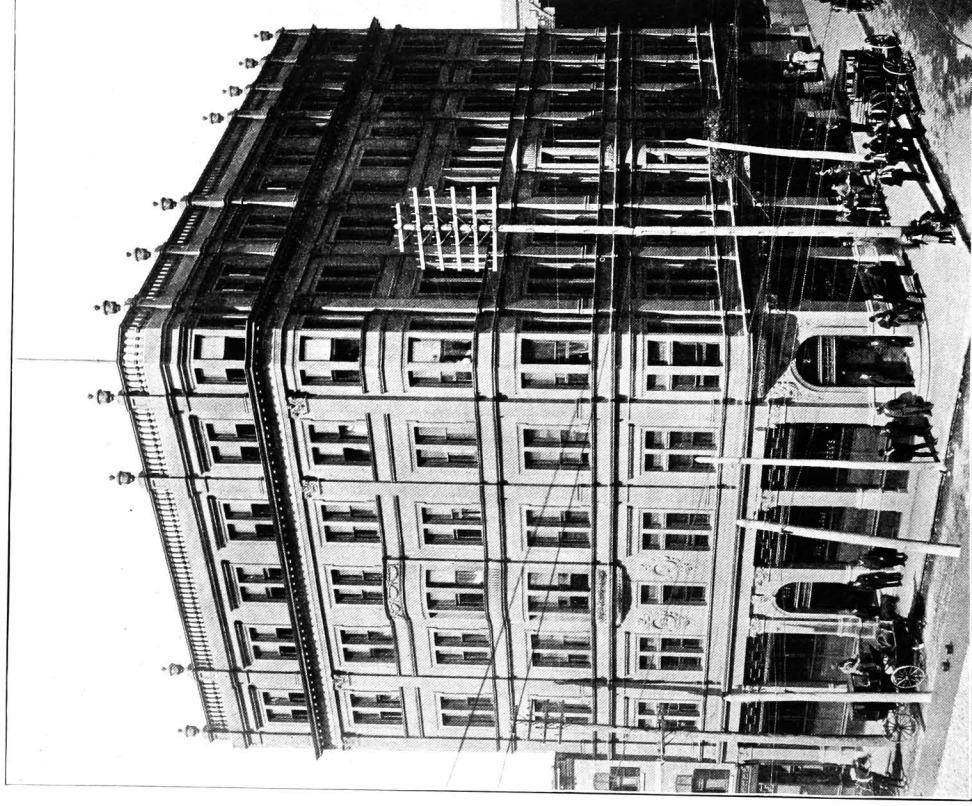
GAULT'S RESIDENCE IN WINTER.



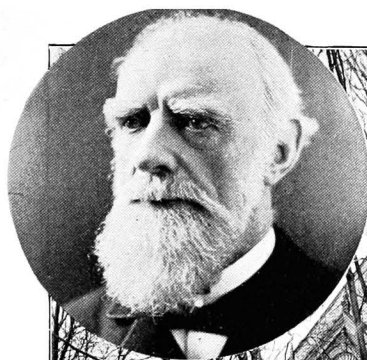
CHRIST CHURCH AND VICTORIA COLLEGE.



MOUNT ROYAL CEMETERY.



QUEEN'S HOTEL.



RESIDENCE OF LORD STRATHCONA.