

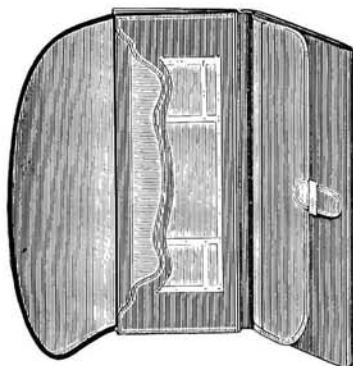
18  
1978

\$ 25.00





# THE **BROWN BROS.** LIMITED



Manufacturers of

## **ACCOUNT BOOKS** Every Kind Every Size **FINE LEATHER GOODS**

Wallets, Purses, Portfolios,  
Dressing Cases, Letter and  
Card Cases, Photo Cases,  
Etc., Etc. =====

**Stationers, Bookbinders, Paper Dealers,  
Office Supplies, Stationery Novelties**

Complete "Up-to-Date" Stationery House

---

**51-53 WELLINGTON STREET WEST**  
**TORONTO**

---

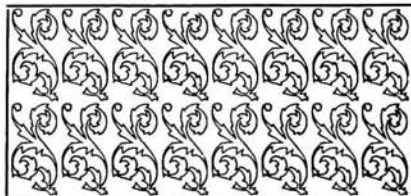
THE  
ELLIOTT

J. J. WALSH

PROPRIETOR

COR. CHURCH AND  
SHUTER STREETS

TORONTO, CANADA



GUIDE

To the Points of Interest  
in and Around the "Queen  
City of the Dominion."



# **SPECTACLES AND EYE-GLASSES**

---

This house is making up day by day singularly beautiful Glasses in Spectacle and Pince-nez form—high-grade in quality—accurate in Lenses—exquisite in design—comfortable in fit—and, as far as possible, appropriate to the face and feature of the wearer; and for Prescription Glasses, we do not, as in the past, send to New York and other places for special Lenses involving tedious delays.

Surface grinding machinery is installed in our shop and is producing daily on short notice those special Lenses demanded by the Oculists.

We respectfully solicit your prescription and other orders.

Our workers, technical knowledge and facilities generally warrant us in asking your patronage with every confidence in our ability to do anything in Spectacle and Eye-Glass work with credit to ourselves and satisfaction to customers

All kinds of Optical Work undertaken.

A fully equipped workshop on the premises to make Repairs and do new work in the manifold lines embraced within our province.

---

## **CHAS. POTTER=OPTICIAN**

**85 YONGE ST. TORONTO**



**"THE ELLIOTT," TORONTO**

Half-tone by Toronto Engraving Co.

# THE ELLIOTT

F

EW HOTELS in this or any other city offer such advantages and comforts to its guests as does the widely-known "Elliott," located at the corner of Church and Shuter Streets.

This Hotel has been in existence for over thirty-nine years, and has become widely known and popular among the travelling public both in Canada and the United States.

Conveniently situated within a short distance of the wholesale and retail centre of the city. It is substantially built of brick four stories in height and 100 x 125 feet in dimensions with large L facing on Dalhousie Street. On the first floor is the Office, Reading and Smoking Rooms and Dining Room. On the second floor is the Public Parlor and large, well-ventilated and newly-furnished Bedrooms; the remaining floors being occupied as sleeping apartments. There are in all seventy-five rooms well ventilated, handsomely furnished and heated by steam, each floor being furnished in the most complete manner with hot and cold baths. The Dining Room has a seating capacity of 150, and is elegantly fitted up and well appointed. The cuisine is under the supervision of a competent and skilled chef, and all the delicacies of the season are here provided in abundance. The building is fitted with all the latest modern improvements. Opening out from the main hall is a beautiful lawn 100 feet square, filled with fine old shade trees and rustic seats for the use and comfort of guests.

The Bar is well appointed and heavily stocked with the choicest Wines, Liquors, Ales and fine imported and domestic Cigars.

The proprietor, J. J. Walsh, who has recently assumed the proprietorship, was born in the city of Toronto and has been associated all his life in mercantile pursuits. His experience has well fitted him for his present duties in looking after the financial and culinary interests of the Hotel. His affable disposition to all comers proves his ability to treat his guests in a right royal manner.



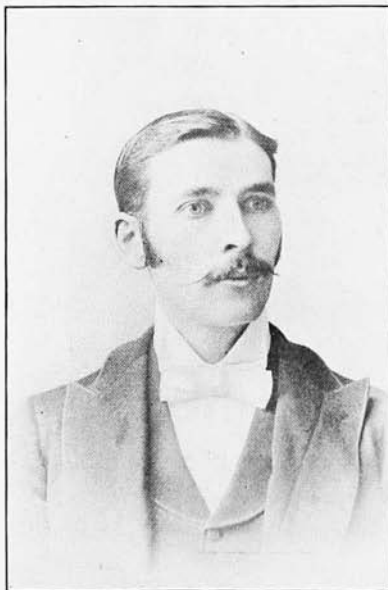
**OFFICE, "THE ELLIOTT"**

Half-tone by Toronto Engraving Co,



# CURRY'S DRUG STORE

---



OUR SPECIALTY IS  
DISPENSING PHYSICIANS'  
PRESCRIPTIONS

ACCURACY AND QUALITY GUARANTEED

A FULL LINE PATENT MEDICINES, PERFUMES,  
TOILET ARTICLES AND DRUGGISTS' SUNDRIES

SPECIAL ATTENTION GIVEN TO  
PATRONS OF THE "ELLIOTT"

---

I. CURRY DRUGGIST  
CHURCH ST. COR. WILTON AVE.  
TORONTO ONTARIO

ONE BLOCK NORTH OF THE "ELLIOTT"



**PRIVATE PARLOR, "THE ELLIOTT"**

Half-tone by Toronto Engraving Co.

COWAN'S

PERFECTION

C O C O A

IS ABSOLUTELY PURE AND OF HIGH QUALITY

SOLD AT A REASONABLE PRICE

ASK FOR IT

COWAN'S ROYAL NAVY CHOCOLATE

—THE BEST VALUE IN A SWEET CHOCOLATE—

THE COWAN COMPANY, Limited ————— TORONTO



**DRAWING ROOM, "THE ELLIOTT"**

Half-tone by Toronto Engraving Co.

# The Chas. Rogers & Sons Co.

---

LIMITED

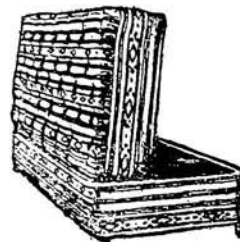


Headquarters for FURNITURE  
UPHOLSTERY  
BRASS BEDSTEADS

---

MANTELS  
GRATES, TILES, ETC.

---



---

97 Yonge Street ————— Toronto, Canada



**A BEDROOM "THE ELLIOTT"**

Half-tone by Toronto Engraving Co.

# B. M. & T. JENKINS

THE  
"A  
N  
T  
I  
Q  
U  
E  
  
S  
H  
O  
P"

PHONE MAIN 1275

## For Old Mahogany and Rosewood Furniture

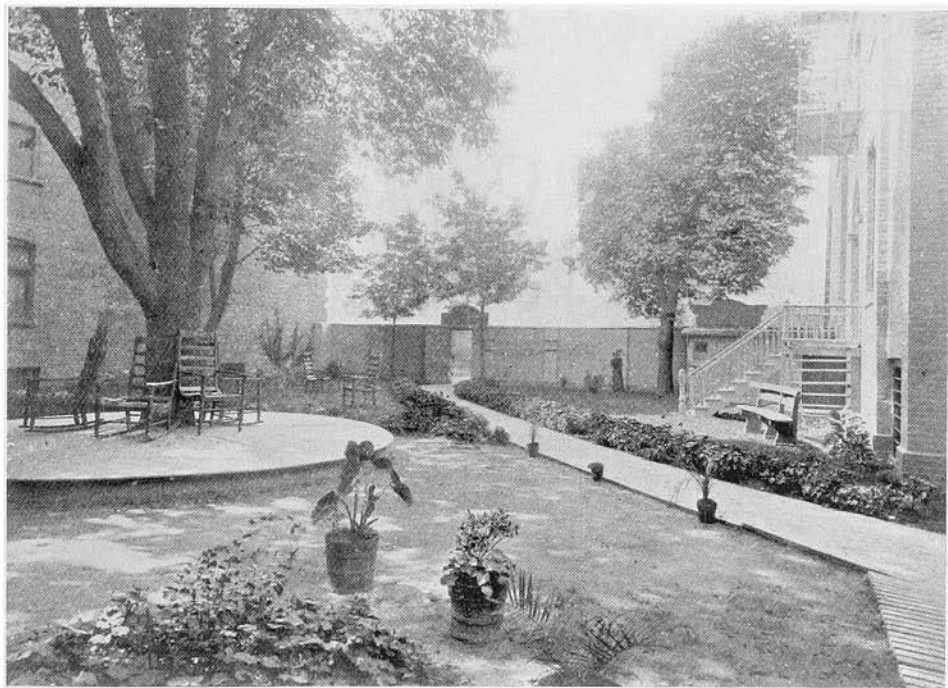
Old Gold and Silver, Rare China, Bric-a-brac,  
Bronzes, Miniatures, Paintings and Engravings,  
Old Arms and Armor, Quaint Old Brass, Curios,  
Art Objects of Every Description

422-424 Yonge St. and 1-15 Buchanan St., Toronto

BRANCHES-2 Phillips Square, Montreal; London and  
Birmingham, England

The only house in Canada dealing exclusively in high-class Antique Furniture. Visitors will find the largest, most interesting and best selected collection on the Continent. A cordial invitation is extended and will well repay a visit.

B. M. & T. JENKINS.



**"THE ELLIOTT" COURT**

Half-tone by Toronto Engraving Co.





# MacLaren's Imperial Cheese

— IS SERVED UP AT ALL HIGH  
CLASS HOTELS AND RESTAURANTS

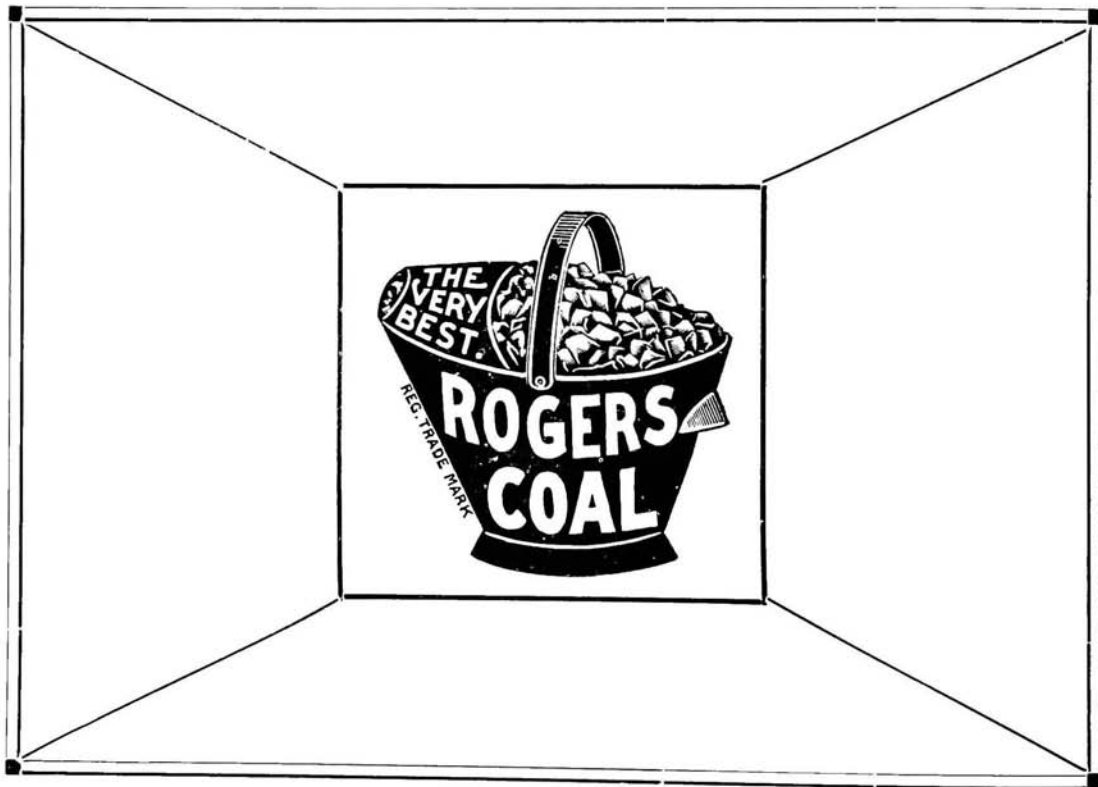
## The Best Cheese Made

Nothing Eatable Has Ever Attained the Lasting Popularity of  
— MacLAREN'S IMPERIAL CHEESE —

— ASK FOR IT —



SCENE IN HIGH PARK





THE UNION STATION

# *Gowans Kent & Company*

---

---

14-16 Front  
Street East

---

---

*Toronto, Ont.*



## Wholesale Crockery and Glassware China and Lamp Goods

Manufacturers of  
Lamps and Rich Cut Glass

Decorators of  
Earthenware, China  
and Opal

---

The Largest Assortment of White  
China for Decorating on the  
Continent.



COR. KING AND YONGE STREETS

# *A Store Worth Knowing*



And one which a visitor to Toronto will not want to count out of the places of interest he must visit. Its location—Cor. Yonge and Queen Streets—the busiest corner in Toronto—makes it convenient for everyone, street cars passing its doors from all points. It is the handsomest and most modernly constructed building for commercial purposes in Canada.

A Store where Visitors Buy Silks to Advantage.——

A Store where Visitors Buy Dress Goods to Advantage.

A Store where Visitors Buy Fine Gloves to Advantage.

A Store where Gentlemen's Wants are Fully met.——

It's a delightful place to rest—with all the conveniences of Waiting Rooms, Check Rooms, Lavatories and the most cheerful and best appointed Lunch Parlors in Toronto.

DIRECTORS  
H. H. FUDGER  
J. W. FLAVELLE  
A. E. AMES

THE **SIMPSON** COMPANY  
ROBERT LIMITED

ENTRANCES—Yonge Street,  
Queen Street Cor. Yonge  
and Richmond, Richmond  
Street.



QUEEN AND YONGE STREETS



# *The Bennett & Wright Co.*

LIMITED

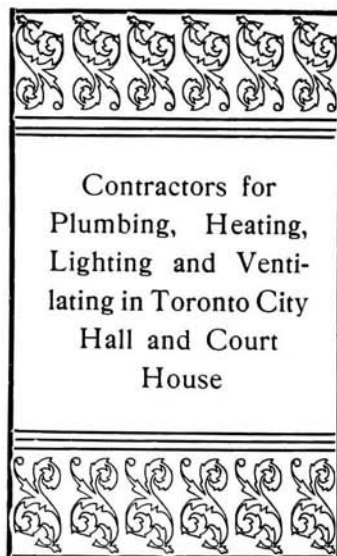
---

---

Engineers and Contractors for  
Steam Heating and Ventilation  
Hot Water Heating  
Hot Blast Heating  
Electric Lighting  
High Pressure Piping  
Fine Sanitary Plumbing

---

---



OFFICE

72 Queen Street East  Toronto, Can.



THE CITY HALL



---

---

# FINE ENGLISH CUTLERY

---

---

DESSERT SETS  
CARVERS  
FISH-EATERS, ETC.

---

---

# RICE LEWIS & SON

LIMITED

Cor. King and Victoria Streets, TORONTO



**ST. JOSEPH STREET**

JOHN REGAN

JOSEPH L. HANCOCK

# Regan & Hancock

## MERCHANT TAILORS

---

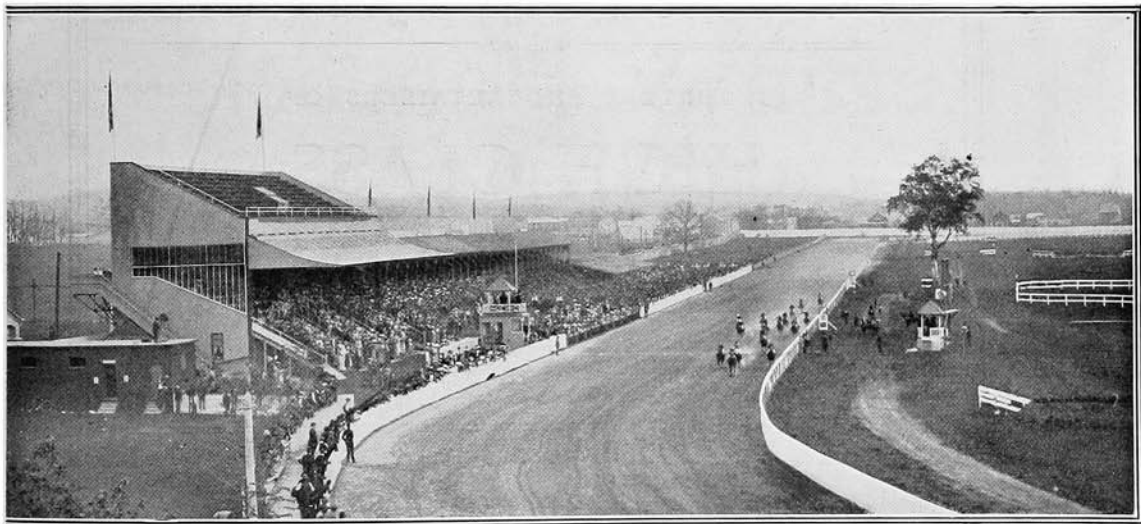
Exclusive Patterns in High Grade Fabrics from the  
Leading London Woollen Houses

---

101  $\frac{1}{2}$  King St. West

TORONTO, ONT.

Telephone Main 3357



**WOODBINE PARK—THE RACE FOR THE KING'S PLATE**



# W. A. Murray & Co.

Limited

IMPORTERS AND RETAILERS OF

## HIGH CLASS DRY GOODS

Visitors to Toronto are cordially invited to visit our establishment, where they will find magnificent collections of Rare Fabrics from every section of the Globe.

# W. A. Murray & Co.

Limited

17-31 King St. East and 10-18 Colborne St. — TORONTO

## PRINCIPAL PLACES OF INTEREST

**THE ALLEN GARDENS** These Gardens, known for many years as the Horticultural Gardens, are located at the corner of Carlton and Sherbourne Streets, and occupy a space of ten acres, all of which are highly cultivated. They were opened to the public on the occasion of the visit of His Royal Highness the Prince of Wales (King Edward VII) in 1860. A pavilion was built in the form of a parallelogram, on stone foundations, and was constructed of wood and glass with iron trusses. It was 75 x 120 feet and had a gallery connected with an outer promenade and verandah by means of glass doors. The pavilion cost \$20,000 and was destroyed by fire in the spring of 1902. A handsome fountain 25 feet high, costing \$2,000, is another attraction at this place of public resort. The Burns Monument is situated at the northeast corner.

**PARLIAMENT BUILDINGS** The New Parliament Buildings are situated at the southern end of Queen's Park. The principal frontage is 435 feet, with a depth of 260 feet, the main entrance forming a double E, and enclosing within its walls 76,000 square feet. The main entrance is composed of three noble arches 18 feet wide by 20 feet high. This entrance is flanked by the great towers with their domes of copper and wealth of stone design. Magnificent views may be obtained from these towers. The buildings were completed at a cost of \$1,250,000.

**UNIVERSITY BUILDINGS** These buildings are at the left of Queen's Park. Here many of the best professional men of America have received their education. The general outline of the building approaches the form of a square, having an internal quadrangle of about 200 feet square, the north side of which is left open to the Park.

**MONUMENTS** In the vicinity of the buildings are located several monuments of considerable importance, viz., that of Sir John A. Macdonald, the Hon. George Brown's Monument, the Monument erected by the ladies of Canada to the heroes that fell in the North-West Rebellion, and the Volunteers' Monument erected by the public in memory of the Volunteers who fell in the act of repelling the invasion of a body of Fenian marauders from the United States in 1866.

**THE PARKS** Toronto's principal Parks are Queen's and Munro. Queen's is located in the north central part of the city, and Munro is east along the lake front. Riverdale and Riverside Parks are also in the east end. High Park is a beautiful spot in the west end, and Exhibition Park in the southwestern part of the city on the shores of Lake Ontario. The north shore of the lake in the immediate vicinity of the city contains many charming spots, as Lorne Park, Long Branch, Kew Beach and Victoria Park. Toronto Island, or Hanlan's Island, as it is familiarly called, is Toronto's "Coney Island," and is a popular resort lying less than two miles south of the city and is reached by a superb line of steamers.



ESTABLISHED 1797

# **NORWICH UNION FIRE INSURANCE SOCIETY**

**Of Norwich, England**

**Capital \$5,500,000**

**Losses Paid \$75,500,000**

CHIEF OFFICE FOR CANADA:

**38 Wellington Street East, TORONTO**

**JOHN B. LAIDLAW,**  
Manager

**ALEXANDER DIXON,**  
General Agent

TELEPHONES { OFFICE, MAIN 518  
RESIDENCE, MAIN 1111

**NORMAL AND MODEL SCHOOLS** On Church, Gerrard and Gould Streets, upon one of the most attractive spots in Toronto, are the buildings and grounds of the Normal and Model Schools. The buildings are situated upon the centre of an open square of about seven and one-half acres of ground. The Educational Museum, in connection with the schools, contains specimens of Canadian and Natural History, and the best variety of maps, charts, diagrams, philosophical apparatus and school furniture. It also contains an extensive collection of copies of celebrated Dutch and Flemish oil paintings and engravings, and casts in plaster of paris of some of the most noted groups of statuary, together with a collection of English, Canadian and classical busts.

**UPPER CANADA COLLEGE** At the head of Avenue Road rises the stately buildings of Upper Canada College, which institution, founded in 1829, for many years occupied the commodious row of brick buildings on King Street West, opposite the Government House. The grounds surrounding the college are extensive and well laid out, and the interior equipment of the structure is all that modern art and appliances can make.

**McMASTER HALL** The Toronto Baptist College on Bloor Street is a grand effort in architecture. The building is five stories in height, and is constructed of brown stone faced with brick. It is considered one of the most complete buildings of its kind in America. It was presented to the Baptist denomination by the late Hon. Wm. McMaster, hence its name, McMaster Hall.

**GOVERNMENT HOUSE** At the corner of King and Simcoe Streets is located the residence of the Lieut.-Governor, Sir Oliver Mowat. The modern French style is exemplified in the construction of the house. The main building is three stories in height above the basement. The frontage of the main structure on King Street is 88 feet, with a kitchen wing extension of 100 feet. On the Simcoe side the frontage is 88 feet, and from the centre of this portion of the building rises a tower 70 feet in height. The main doorway is deeply recessed with massive cut-stone arch and jambs and broad cut-stone steps, and leads into the vestibule twelve feet square, which is separated by an elaborate screen filled in with stained and embossed glass, from an inner vestibule or loggia of the same dimensions. This again is separated from the main hall by an arch springing from fluted Corinthian columns with richly carved caps. The interior of the building is furnished in elaborate style.

**OSGOODE HALL** Osgoode Hall is located on Queen Street West. It was named after the late Hon. William Osgoode, Chief Justice of Upper Canada. The building contains the court rooms and offices for the Superior Courts of the Provinces. The building is of classic style and is of great beauty, the centre hall being particularly fine. The grounds encircling the magnificent structure comprise about six acres.

=====JOS. E. SEAGRAM=====

---

WATERLOO, ONT.

---

Distiller of the Celebrated Brands of

—— WHISKEY ——

---

**“83”**  
**OLD TIMES**

**WHITE WHEAT**  
**and MALT**

FOR SALE EVERYWHERE

---

Toronto Office: 30 Wellington Street East

**EXHIBITION GROUNDS** The Exhibition Grounds occupy a model site on the Garrison reserve, overlooking Lake Ontario. The grounds are very extensive and the buildings are commodious, of pleasing design and perfectly equipped for the purposes for which they were erected. Here is held each year Canada's greatest Exposition, and thousands of people from all parts of the Dominion and the United States pay a visit annually to this, the Provinces' biggest agricultural and industrial show.

**GARRISON QUARTERS** To the south and east of Exhibition Park lie the Garrison Commons, and, facing the lake, the New Fort and Barracks, where are quartered a portion of Canada's regulars—infantry and cavalry. A little farther east is the Old Fort with its earthen embankment and old cannon and the remains of its strong wooden palisades. Here in the war of 1812 about 200 United States soldiers were killed, during the taking of the fort, by the explosion of a powder magazine.

**B. M. & T. JENKINS** The only House in Canada dealing exclusively in High-class Antique Furniture. Visitors will find the largest, most interesting and best selected collection on the continent. A cordial invitation is extended, and will well repay a visit. Nos. 422-424 Yonge Street.

## OTHER PLACES OF INTEREST AND PUBLIC BUILDINGS

CUSTOMS HOUSE, Yonge and Front Streets.  
 PROVINCIAL LUNATIC ASYLUM, Queen Street West.  
 TEMPLE BUILDING, Bay and Richmond Streets.  
 ST. JAMES' CATHEDRAL, Episcopal, King St. East.  
 ST. ALBAN'S CATHEDRAL, Episcopal, Howland Ave.  
 ST. MICHAEL'S CATHEDRAL, Rom. Catholic, Shuter St.  
 METROPOLITAN CHURCH, Methodist, Queen St. East.  
 ST. ANDREW'S CHURCH, Presbyterian, King and Simcoe Streets.  
 BAPTIST CHURCH, Jarvis and Gerrard Streets.

ST. JAMES' CEMETERY, Parliament Street.  
 POST OFFICE, Adelaide Street East.  
 ST. LAWRENCE HALL AND MARKET, King St. East.  
 PUBLIC LIBRARY, Church and Adelaide Streets.  
 CENTRAL PRISON, Strachan Avenue.  
 KNOX COLLEGE, Spadina Avenue.  
 TRINITY COLLEGE, Queen Street West.  
 BOARD OF TRADE BUILDING, Front and Yonge Sts.  
 CANADA LIFE ASSURANCE BUILDING, King St. West.  
 THE ARMOURIES, University Avenue.

## THEATRES AND PLACES OF AMUSEMENT

GRAND OPERA HOUSE, Adelaide Street West.  
 MASSEY MUSIC HALL, Shuter Street.  
 PRINCESS THEATRE, King Street West.  
 SHEA'S THEATRE, 93 Yonge Street.

TORONTO OPERA HOUSE, Adelaide Street West.  
 LACROSSE GROUNDS, Rosedale.  
 HANLAN'S POINT, Island.  
 MUNRO PARK.

Phone Main 1277

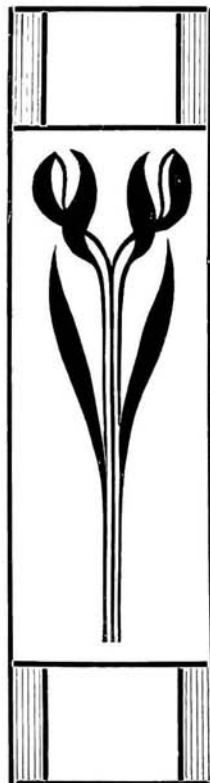
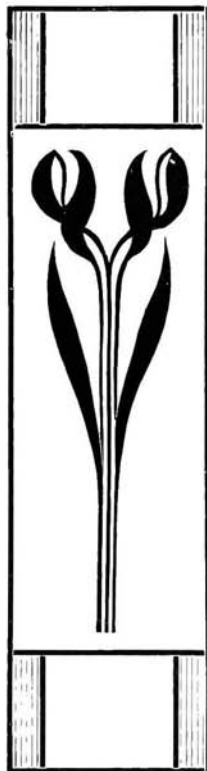
**J. J. COULTER**

IMPORTER OF  
**WINES AND  
LIQUORS**

SOLE AGENT  
**DUNVILLE & CO.'S IRISH AND  
SCOTCH WHISKIES**

AND  
**ROBERTSON & SANDERSON'S  
CELEBRATED MOUNTAIN  
DEW**

**37 Colborne Street**  
**TORONTO**



## PRINCIPAL CHURCHES AND ASSOCIATIONS

Baptist .....	16	.....Jarvis Street.....	Cor. Gerrard and Jarvis Streets.
Bible Christian.....	4	.....Agnes Street.....	Cor. Agnes and Terauley Streets.
Catholic Apostolic.....	1	.....Catholic Apostolic.....	Cor. Gould and Victoria Streets.
Congregational.....	9	.....Bond Street.....	Cor. Bond Street and Wilton Ave.
Christadelphian .....	1	.....Cecil Street.....	Cecil Street.
Episcopal .....	..	.....St. Alban's Cathedral..	Howland Ave.
Episcopal .....	42	.....St. James' Cathedral...	Cor. Church and King Streets.
Episcopal (Reformed)...	1	.....Christ Church.....	Cor. College and Lippincott Streets.
Hebrew Synagogue .....	2	.....Hebrew Synagogue ..	Bond Street.
Lutheran .....	1	.....Lutheran .....	116 Bond Street.
Methodist.....	36	.....Metropolitan .....	Queen Street E., between Bond and Church.
New Jerusalem.....	1	.....New Jerusalem ..	Elm Street.
Presbyterian .....	30	.....Old St. Andrew's.....	Cor. King and Simcoe Streets.
Roman Catholic.....	11	.....St. Michael's Cathedral.	Shuter Street, between Bond and Church.
Society of Friends. ....	1	.....Society of Friends.....	28 Pembroke Street.
Salvation Army .....	6	.....Salvation Temple.....	Cor. James and Albert Streets.
Unitarian .....	1	.....First Unitarian.....	216 Jarvis Street.
Central Y.M.C.A., Yonge and McGill Streets. City Railroad Branch Y.M.C.A., 4 Spadina Street.			

## CEMETERIES

St. James' Cemetery is at the head of Parliament Street, about eighty acres in extent. The grounds are beautifully laid out and planted. The mortuary chapel is a fine specimen of Elizabethan architecture.

The Necropolis is on the north side of Winchester Street. The grounds are tastefully laid out.

Prospect Cemetery is situated on the north side of St. Clair Avenue, west of Dufferin Street.

St. Michael's Cemetery, the burying ground of the Roman Catholic denomination, is situated on Yonge St., within the city limits. It is very picturesque, and laid out with great taste.

Mount Pleasant Cemetery is situated on Yonge St., about a mile north of the city, covering one hundred acres in which are beautiful drives, artificial lakes, etc.

Jewish Cemetery, east side of Pape Avenue.

## STEAMER LINES

Niagara River Line ; To Niagara-on-the-Lake, Queenston and Lewiston.

The Richelieu and Ontario Navigation Co. : To Rochester, Thousand Islands, Montreal and Quebec.

The Hamilton Steamboat Co. : To Hamilton.

The Steamer Argyle : To Bowmanville and intermediate points.

The Toronto Ferry Co. : To and from the Island.  
Steamers Garden City and Lakeside : To St. Catharines and Niagara Falls.

A Healthful and Invigorating Beverage

===== DRINK =====  
“Caledonia”  
MINERAL WATER  
=====

Kept in Stock by All the Leading Hotels in Canada

---

AGENT AND BOTTLER FOR ONTARIO

J. J. McLAUGHLIN, Toronto, Can.

*"My Valet"*

**FOUNTAIN THE TAILOR.**

30 ADELAIDE STREET WEST  
TORONTO

MAKES A SPECIALTY OF

**Repairing, Altering, Pressing and Cleaning**

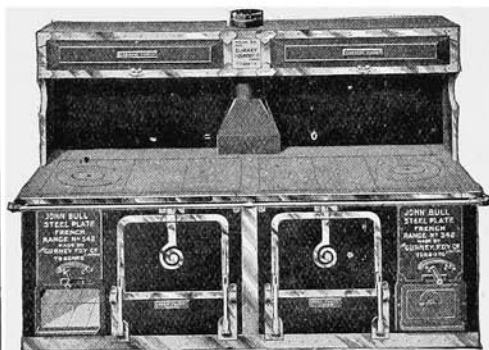
**LADIES' AND GENTLEMEN'S  
GARMENTS**

Goods called for and returned to any  
part of the city. Calls made at all hotels.

**Dress Suits to Hire**

TELEPHONE MAIN 3074





**"JOHN BULL" HOTEL RANGE**

We are manufacturers of  
Hotel Ranges, Carving Tables,  
Bake Ovens, Broilers, Steam  
Cookers, Steam Roasters, Etc.,

**In fact can  
completely Equip  
a Hotel Kitchen.**

If interested call on us, or write for Catalogue

---

---

**THE GURNEY FOUNDRY CO.**

---

LIMITED

**BRANCHES:**  
Montreal, Winnipeg, Vancouver

**TORONTO**

Phones Main  
1471 — 8350

Authorized Capital, \$60,000  
Paid-up Capital, \$30,000—

**THE DAWSON**  
**COMMISSION**  
**C O M P A N Y**  
INCORPORATED ————— LIMITED

RECEIVERS AND HANDLERS  
— OF ALL KINDS OF —

== Foreign and Domestic Fruits ==

VEGETABLES — POULTRY  
AND COUNTRY PRODUCE

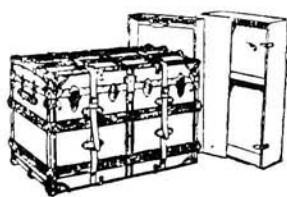
— CORRESPONDENCE AND CONSIGNMENTS SOLICITED —

Cor. West Market and Colborne Sts., Toronto

"WHERE TRUNKS ARE MADE"

# The Biggest Trunk Store in Canada

Wherever you go, be it for long or short trip, you must have baggage. We are ready to supply your Trunk and Leather Goods wants in a most satisfactory manner. We know a greater stock and variety will be found here than elsewhere.

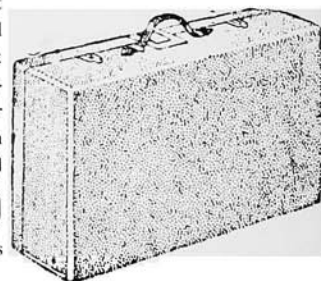


heavy solid leather straps, as shown in cut, for..... **5.00**

Brass-Mounted Trunks, 2 straps, \$5.  
Leather Suit Cases, \$4.  
Leather Club Bags, 85c. Telescope Valises, 35c.  
Men's Leather Hat Boxes, \$1.50.  
Fine Leather Cabin Bags, \$5.

Waterproof Canvas - Covered Theatrical Trunk, solid steel clamps and corners, hardwood slats, sheet steel bottom, corner rollers, strong strap hinges, deep tray and hat box, and

Leather Suit Case, with steel frame, brass lock and fittings, linen-lined, pocket, "our own make," worth \$6 in any retail store, **4.00** our price



Gentlemen's "Kit" Bags, \$6.

Men's and Women's Umbrellas, of our own make, with good Gloria silk coverings and Case, silver mounted and natural wood handles, for \$1.50.

MAIL ORDERS RECEIVE PROMPT ATTENTION

**EAST'S** Corner YONGE AND AGNES STREETS  
TORONTO

**Telephone 1034**

**F. R O S A R**  
**Undertaker**

---

**240 King Street East, TORONTO**

---

THE  
**Wm. Ryan Co.**  
Limited

---

---

**Pork Packers, Produce  
and Commission  
Merchants**

---

---

**70 and 72 Front Street East  
TORONTO**

---

---

*SPECIALTIES*

---

*Mild Cured Hams*

*Mild Cured Breakfast  
Bacon*

*New Laid Eggs*

*Choice Creamery Butter*

*Stilton & Cheddar  
Cheese*

*"Bow Park" Cream  
Cheese*

---

---



Reilly's  
High Class  
FURS



None  
Better  
Made

REILLY & COMPANY

Manufacturing Furriers

220 Yonge Street ————— Toronto

Phone Main 3628

TELEPHONE MAIN 189

Victoria Livery and  
Hack Stables

J. McCarron  
LIGHT LIVERY

First Class Rigs ———  
at Reasonable Rates

25 and 27 Queen Street East  
————— Toronto —————

Orders received at this Office.

Phone Main 4434

THE

# ATLANTIC FISH AND OYSTER CO.

Importers of  
all Kinds of

**SEA FISH  
SHRIMP  
TURTLE  
and  
OYSTERS**

**316 Spadina Ave.  
TORONTO**

Special Rates to Hotels and Restaurants

# BREDIN'S HOME - MADE B R E A D

TASTES AS BREAD  
DID WHEN IT WAS  
MADE AT HOME—

THE

## Bredin Bread Co.

Limited

160 - 164 Avenue Road, Toronto

TELEPHONE NORTH 133

# Monuments

---

WE HAVE THE VERY LATEST  
DESIGNS IN VAULTS, CELTIC  
CROSSES AND SARCOPHAGI

---

The McIntosh Granite  
and Marble Company  
Limited

1119 Yonge Street—Toronto  
Phone North 1249

## WRINKLES AND ALL FACIAL BLEMISHES POSITIVELY REMOVED

The greatest power in the world is beauty, and a clear complexion its chief charm.

Many women desirous of possessing a clear, healthy and beautiful skin have little idea how to accomplish it. The safest and only proper way is



to consult the highest authority on such matters, people who have studied hygiene and physiology, and can give you the benefit of long study and successful experience, together with the methods used, so that the treatment may be carried out at home.

There is no complexion but what can be benefited by treatment, and you can obtain the

best advice from Madame Loraine Kennedy, the leading complexion specialist, who has put her work on exhibition time and again by treating one side of the face, leaving the other side to show what the face was like before treatment. The above is an exact photo of a lady that was on exhibition for two months at my Toronto parlors, with the wrinkles removed from one side of the face. All consultations free. Instructions on how to develop or reduce the form free.

**Madame Loraine Kennedy**

87 King Street West (Up-Stairs)



---

---

JAMES LUMBERS

---

---

Wholesale  
Grocer

---

---

67 FRONT ST. EAST  
TORONTO ——— CANADA

---

---

Hobberlin  
Brothers &  
Company

---

---

CASH TAILORS

---

---

---

---

153 Yonge Street  
Toronto, Canada

**KAY'S****Canada's Greatest Carpet  
and Furniture Store****KAY'S**

We have the largest and most complete stock of House Furnishings of any store in the Dominion of Canada. Our large sales enable us to buy the best goods from the manufacturer at his lowest prices. Our customers benefit thereby. You will find tempting prices in :—

**Carpets, Rugs, Linoleums, China and Japanese Mattings, Parquet Wood Floors, Curtains, Draperies, Coverings, Window Shades and Poles, Wall Paper, Art Pottery, and China Bric-a-Brac Cabinets and Screens, Bedding and Beds, Bureaus and Dressing Tables, Sideboards and Dinner Wagons, Tables and Chairs, Sofas and Lounges Rattan and Willow Ware, Hickory and Garden Furniture.**

We will be pleased to have you go through our many departments at any time.

**JOHN KAY, SON & COMPANY**  
LIMITED**36 - 38 KING STREET WEST ————— TORONTO, CANADA**

DIAMOND HALL

DIAMOND HALL

# *About Diamonds*

---

The price advantages offered by us to buyers of Diamonds have brought purchasers from the most distant points of the United States and Canada.

A member of our firm visits Amsterdam to personally select our Stock.

Diamonds enter Canada "Duty Free."

Our Stock is the Largest in Canada, and every Diamond embraced in it is of superior quality.

In selecting a Diamond from our stock there can be no disappointment as we personally guarantee the quality.

---

---

## *Ryrie Bros., Jewelers*

*Cor. Yonge and Adelaide Sts., TORONTO*

