

JULY, 1901

GOLD

in

Kootenay

Boundary Country

and

Cariboo

REACHED BY THE
CANADIAN PACIFIC
RAILWAY

BR 917.1145 C12.2

BRITISH COLUMBIA

British Columbia's Mineral Wealth

THE MINERAL WEALTH of British Columbia—the most westerly Province of the Dominion of Canada—is unsurpassed in value and extent by that of any other country on the habitable globe. Almost every kind of valuable mineral has been found within its limits, some under unusually favorable conditions of quality and quantity, although systematic exploration has extended over only a comparatively small section of the Province when its vast area is considered. Gold, silver, copper, lead, cinnabar, platinum and coal have already given rich returns for the money and labor spent on their extraction, and there are satisfying indications that some of the more precious metals exist in even richer and larger deposits in regions still awaiting thorough exploration than they do in the great wealth producing ore bodies now being developed. British Columbia's output, since the early discoveries forty years ago, aggregates in value \$152,155,208—a magnificent total which is being largely augmented year by year as the work of discovery and development continually progresses under increasingly advantageous conditions.

A VAST MINERAL REGION

The mineral region of British Columbia covers a huge tract, forming a great belt whose western limit leaves the United States boundary about 150 miles east of the Pacific Coast and runs north-westerly beyond unknown Cassiar, 500 miles away, to the wonderfully rich Yukon Valley in Canadian and Alaskan territory. This immense area is best described as resembling an animal whose head and shoulders are in the Yukon, the tail in Montana, but whose main body lies in British Columbia. Exploration has demonstrated that there is no very extensive section of the Province from the Rockies to the Coast and from the international boundary line to its most northerly limits that is not more or less mineralized, leading to the oft-expressed belief that almost the entire country is underlaid with precious metals. The name of British Columbia has in fact become the synonym of mineral richness, and its **TREASURE CHESTS ARE NOW OPEN TO THE WORLD.** The recognized and one of the greatest authorities on mineralogy on the North American continent, the late Dr. G. M. Dawson, F.R.G.S., who for fifteen years was engaged in exploring British Columbia, says: "The explorations of the Geological Survey of Canada have already resulted in placing on record the occurrence of rich ores of gold and silver in various places scattered along the entire length of the Cordilleran (Rocky Mountain) region in Canada. * * * Because a mountainous country, and until of late a very remote one, the development of the resources of British Columbia has heretofore been

BRITISH COLUMBIA

slow, but the preliminary difficulties having been overcome, it is now, there is every reason to believe, on the verge of an era of prosperity and expansion of which it is yet difficult to foresee the amount or the end."

Mr. Wm. A. Carlyle, formerly Provincial Mineralogist, and now Manager of the Rio Tinto mines in Spain, states:—

"For the development of its resources the Province of British Columbia is now favorably situated, as it is very easy of access. The different districts are being reached by railways in conjunction with the excellent waterways, the climate is very favorable, there is an abundance of fuel and water, a good class of labor is available, and the facilities for cheap mining and treatment of ores are as favorable as can now be found in any other mining centre in the world. Considering, too, that ten years ago most of the country was an absolute wilderness and totally unknown, the progress that has been made and the results so far attained must attract the attention of many seeking opportunities for excellent investment of capital. Without doubt the next few years will show great advances."

IMPROVED MINING METHODS

As the most primitive methods only were employed in mining the more precious ores up to a few years ago, the full value of the country's mineral resources could scarcely be approximately estimated, but with the recent commencement of the era of scientific mining in a systematic manner, made possible by the development of the Province through the inflow of foreign capital and the increased facilities for transportation, rendering prospecting easier and actual mining operations profitable, it is assured that the coming great development will show an enormous richness hitherto past comprehension.



ROSSLAND, B.C.

These rich fields are now attracting experienced miners and mining men from all over the world, and capital is pouring in from all directions to continue in a more concerted and organized way that marvellous developing which has characterized the Kootenays and Cariboo and other sections during the past three years. A number of companies have been incorporated within the past few years in London, England, with a capital of over \$50,000,000, to operate in British Columbia, besides the large sums of American, French, Canadian and Australian money which are being invested here.

THE KOOTENAYS

MINING DEVELOPMENT

The official returns published by the British Columbia Department of Mines furnish interesting statistics as to the mineral development of the Province. The total mineral production of British Columbia to January 1st, 1901, amounts to the enormous sum of over \$152,155,208, of which \$62,584,443 has been from placer gold—the result chiefly of rich workings in Cariboo, the Wild Horse in East Kootenay, and other famous locations. Between 1890 and 1900 (inclusive) the total value of the annual mineral production increased from \$2,608,803 to over \$16,344,751, due largely to the marked increase in the production of gold, silver, lead and copper. The latter sum, however, does not fully represent the amount of work done, the results of which will be obtained later. There is every indication, however, that from the rapid strides forward which are constantly being made, the gradually expanding work will shortly reach immense proportions, that stage in the mineral development of the country having been reached which ensures a certain and prosperous future.

LAW AND ORDER

No known mining country enjoys a happier or more complete immunity from disturbing questions than British Columbia. The laws of the country—the result of wise legislation—are honestly and impartially enforced, and authority is admirably maintained. Life is as safe here as it is in all Canada and there is a wholesome regard for the rights of property. There is a noticeable absence of rowdiness and crime in all the camps and the tougher element have discovered that there is no room for them in the country outside the jails and prisons. All the towns of any pretensions have schools and churches, and some of them possess water works, electric lights and the other adjuncts of modern towns in the east.

CAPITALISTS AND WORKING MEN

A person with capital can find in any section of the Province excellent opportunities for investment, either in mining or in commercial pursuits. In some instances, not a great amount is required, and with the exercise of ordinary prudence and business caution should yield large returns. The following is the present average schedule paid for experienced help at the mines, although rates may vary slightly in different camps:—

Common labor, \$2.50 to \$3.00; miners in outdoor work and tunnelling, \$3.25 to \$3.50 a day; machine drill men, \$3.50 to \$4.50 a day; helpers, \$3.00 a day; blacksmiths, \$3.50 to \$4.00 a day; engineers, \$3.50 to \$4.50 a day; foremen, \$4.00 a day. Living expenses are not excessive in these towns. Regular board can be had at \$5.00 per week and upwards. Rooms cost from \$8.00 and upwards a month. Servant girls get good wages, and are in demand. It is desirable that wage-earners should have some money beyond their travelling expenses to tide them over until a situation is secured.

KOOTENAY.

THE extraordinary growth of the mining industry in the Kootenay and the consequent rush to invest money in a country almost unheard of five years ago, has made its name as familiar as the best known mining camps of South Africa,

WEST KOOTENAY

Australia or the United States, and forms one of the century's most important epochs in the history of mining. California in '49, Australia in '51, and Colorado when Virginia City, Leadville and Cripple Creek were the centres of attraction, had no greater rush of miners and mining men; and while there have doubtless been greater "booms" than the Kootenays have produced, nowhere has there been that steady substantial progress which indicates solidity and permanency. That the enterprise of those who are pouring in from all parts of the world is being rewarded is evident by the satisfactory returns and the promising prospects which each of the numerous mines shows as development is undergone. Prosperous cities are springing up in every district, capitalists, merchants and business-men being attracted by the stupendous mineral resources of the country, which embraces an extent of about 15,000 square miles. The output of ore is gradually increasing as machinery and appliances are being added to the different mines—the increase in ore mined last year



NELSON, BRITISH COLUMBIA

being 93 per cent.—and with the cheaper and better means of transportation which have been recently supplied, and the cheaper smelting facilities furnished, there is every indication that a still greater impetus will be given the mining industry. The Kootenay is divided into two great divisions—the West and the East.

West Kootenay

Utterly unknown a few years ago, and with inadequate means of communication up to a recent date, West Kootenay has suddenly, through the development of its great mineral wealth, acquired a fame that has reached far-off lands and attracted hither experienced mining operators and capitalists who, convinced of the capabilities of the country, have remained to aid in its development. In the past few years great strides have been made. The work of development has been and still continues to be carried on with increased vigor. Many prosperous and progressive

WEST KOOTENAY

mining centres have been created, and numerous prospects have developed into established and productive mines—a number of which in the Slocan country and in the Trail Creek and Nelson districts are either ore-shippers, or sufficiently developed to become shippers, and will shortly ship now that adequate smelting and transportation facilities are afforded, and a number of them are dividend-payers.

Amongst the most valuable discoveries of gold and copper are those in the Trail Creek District, situated on the west side of the Columbia River and within six miles of the international boundary, the wealth of which, and the extent of mineral, astonished the mining world. Eminent mining engineers, representing American, English and French capital, are authority for the statement that within a radius of a dozen miles of Rossland nature has deposited more golden store than in any similar area on the globe. The value of ore produced by the Rossland mines during 1900 aggregated \$2,739,256, the shipments being 217,636 gross tons.



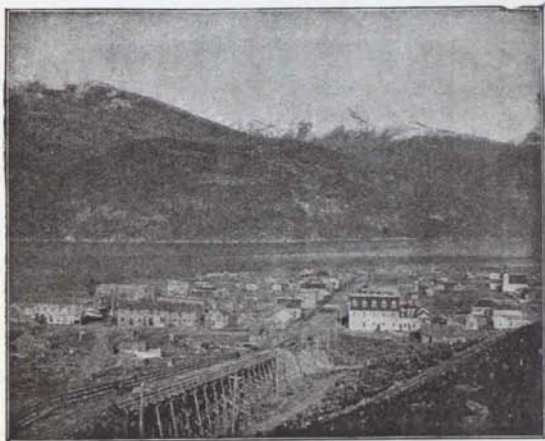
AINSWORTH, ON KOOTENAY LAKE

In 1894 the total output was 1,856 tons, valued at \$75,520; in '95 it had increased to 19,693 tons, valued at \$702,359; in '96 to 38,075 tons, valued at \$1,245,300; in '97 to 68,804 tons, valued at \$2,007,280, in '98 to 111,282 tons, valued at \$2,470,811, and in '99 to 172,665 gross tons, valued at \$3,229,086. Rossland is the site of the famous Le Roi and several other gold mines, the value of the ore from which runs from \$8 to \$75 per ton, and in instances even higher, in gold, copper and silver. The place has risen in its brief existence from an unknown mining camp to a thriving well-built city of 8,000 people. Rossland boasts of a system of waterworks and sewerage, is lighted by electricity, has agencies of the great banking institutions of Canada, excellent public and private schools, hospitals, several churches, good hotels and daily and weekly newspapers. This city and Trail, seven miles distant on the Columbia River, are

WEST KOOTENAY

typical of what can be speedily done by the opening up of a mining district. In 1894, Trail had no existence. It has now a population of about 1,500, with the most extensive copper and lead smelting works in Canada, first-class hotels, schools, etc., and is also lighted by electricity. The smelter has a daily capacity of 900 tons, and is modern in every detail, \$200,000 having been recently spent in improvements alone.

Nelson, on an arm of Kootenay Lake, one of the most prosperous and progressive towns in the Province, is, besides being the commercial metropolis of the Kootenays, also the centre of a rich district, the celebrated Hall mines on Toad Mountain being but a few miles from the town. A 370-ton smelter has been erected at Nelson, which is connected with the Hall mines by an aerial tramway by which the ores are brought down the mountain for treatment. Free milling ore has been found on several of the creeks near Nelson, and at some places hydraulicing is carried on. The output of this district during last year



KASLO, ON KOOTENAY LAKE

(1900) was \$787,082. There are other valuable locations in the Salmon River and North Fork River countries to the south and south-east, those at Yimer and Salmo having developed into good mines.

About Ainsworth, Kaslo and other points on Kootenay Lake, rich silver-lead mines are profitably worked, those at the first mentioned camp being amongst the earliest discoveries made in the Kootenay. Some of them are large shippers. In the locality are large bodies of low-grade ores which will be worked profitably under the more favorable conditions which are assured by the early securing of additional facilities for handling and smelting.

The Slocan country—that region lying between the Arrow and Kootenay Lakes—has been demonstrated to be one of the richest silver-lead ore producers on the continent. The output from this section is increasing rapidly, and the different properties have

WEST KOOTENAY

declared dividends to the extent of about \$3,500,000 up to the present time. Several of them are credited with having paid large sums to their owners. The general character of the ore is high-grade galena, often carrying 600 and 800 oz. of silver, and averaging 100 oz. of silver and 50 % lead. Adjacent to these mines are well-built flourishing towns which had no existence a few years ago.

The country bordering on Slocan Lake and south towards the Lower Kootenay is richly mineralized, and at many points mines are being developed rapidly and profitably. There are already several small shippers whose output is largely increasing since the establishment of rail communication between the Lake and the Lower Kootenay River.

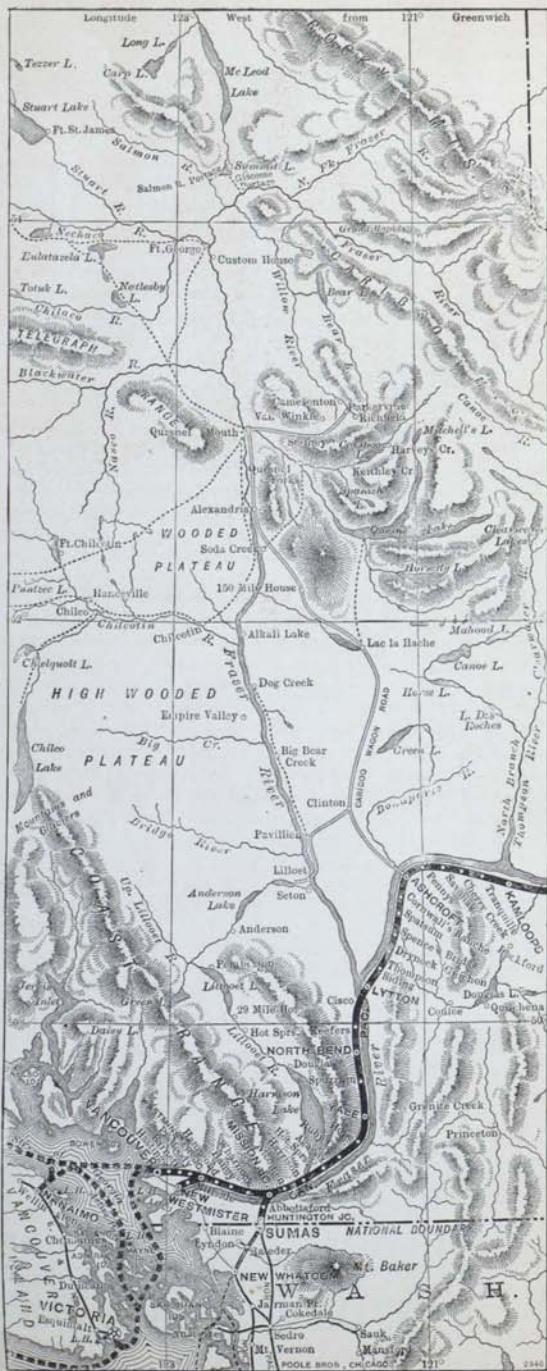
The Lardeau and Trout Lake—reached from Arrowhead by steamer and waggon—are promising districts. They present excellent openings for the prospector and investor, for, while not a very large area has been prospected, sufficient has been shown to indicate the presence in large quantities of silver-lead with gold and copper.



TRAIL, THE SMELTER CENTRE

The Big Bend district comprises those portions of both East and West Kootenay lying north of the Canadian Pacific Railway in the triangle formed by the course of the Columbia which flows north from Donald for 100 miles and turning suddenly south is crossed again by the C. P. R. line at Revelstoke, 75 miles further west. The region is mineralized throughout. In the early days enormous yields of gold were obtained by placer mining, which still makes profitable returns. There are gravel benches of great value along the main river and most of its tributaries, which will, with the utilization of hydraulic plants, give rich reward.

Along the main line of the Canadian Pacific are several prosperous mining camps—the mining division of Illecillewaet occupying the western slope of the Selkirk range. The ores of the Illecillewaet are chiefly silver-lead, running from 35 to 120 ounces of silver and 40 to 70 per cent. lead. Through the



MAP OF THE CARIBOO

WEST KOOTENAY

Albert Canon section—as in nearly every other part of West Kootenay—are areas which have yet to feel the tread of the prospector, and opportunities which, if properly grasped, cannot fail to lead on to fortune.

Within this entire mining region, parts of which are only beginning to be prospected, the number of claims recorded is steadily and rapidly increasing, while the output of many of them that have gone beyond the development stage would average about \$100 to the ton. It must also be borne in mind that many of the mines from which the heaviest output was made until recently were miles from water or rail communications, thereby hampering extensive operations.

The development of the mines has in the past been somewhat retarded by the want of smelting works, but this has now been overcome by the erection of extensive works at Trail and Nelson, and the owners of various mining properties have built concentrators and stamp mills, for in some sections there is free milling gold, and constructed roads and tramways to handle their outputs.

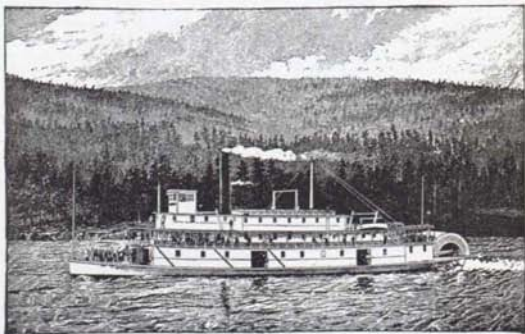
Probably not a little of the wonderfully increased activity in mining is due to the greater facilities for transport provided by the railway and steamboat companies, who, satisfied of the immense value of the country, and the enormous trade at their command, at once arranged the extension of the required lines, so that now any part of the West Kootenay country is easily accessible throughout the year. That this could be accomplished, railway branches have been constructed through southern British Columbia by the Crow's Nest Pass to Kootenay Lake; from Revelstoke, on the main line of the Canadian Pacific, to Arrowhead; from Nakusp, on the Upper Arrow Lake, to Sandon, in the Slocan region; from Sandon to Kaslo; from Slocan City, at the foot of Slocan Lake, to the Columbia & Kootenay branch on the Lower Kootenay; from Robson to Nelson along the Lower Kootenay, connecting the Columbia River with Kootenay Lake; from Robson to Rossland by way of Trail, the smelting centre; and other branches are in course of construction. With the recent completion of the Crow's Nest Pass Railway from the main line of the Canadian Pacific Railway east of the Rocky Mountains through the East Kootenay coal fields to connect with the Company's system in West Kootenay, no other mining country in the world possesses the advantages of this district in its extensive facilities for communication. The Canadian Pacific Railway Company has also established an excellent steamboat service on the Columbia River and Arrow Lakes, on Slocan Lake and on Kootenay Lake, connecting with the different branch railway lines through the whole district.

HOW TO REACH WEST KOOTENAY

The West Kootenay country can be reached by the Canadian Pacific Ry. from the east by two routes. The most direct of these is by its Crow's Nest Pass Branch from Medicine Hat, on the main line of the Canadian Pacific Ry., east of the Rocky Mountains, through East Kootenay to Kootenay Landing at the head of Kootenay Lake, where steamer connection is made for Nelson and other points on the Lake. A fast daily service has been inaugurated with through sleeping car to Kootenay Landing. From Nelson there is direct communication either by rail or steamer with all parts of British Columbia.

EAST KOOTENAY

The other route is by the Canadian Pacific Railway to Revelstoke, where a branch line of the C. P. R. runs to Arrowhead, at the head of the Upper Arrow Lake, from which all parts of the country south of the main line of the C. P. R. can be reached. The splendid new steamers "Rossland," "Minto" and "Kootenay" of the Canadian Pacific Railway Co. run daily to Nakusp and Robson, making close connections at these points with the Company's branch lines. At Nakusp the Nakusp & Slocan branch of the C. P. R. is taken to Rosebery, New Denver, Three Forks and Sandon. From Sandon a railway has been completed to Kaslo, on Kootenay Lake. A daily steamboat service has also been established by the Canadian Pacific from Rosebery to Slocan City, and intermediate points on Slocan Lake, immediately south and east of which are situated several newly-opened camps, and from Slocan City the Lower Kootenay river is reached direct by rail. At Robson the Columbia & Kootenay branch of the C. P. R. is taken to Nelson, from which Kaslo and all other important camps on the Kootenay Lake are reached by Canadian Pacific steamers daily (except Sundays). From opposite Robson the Rossland branch of the Canadian Pacific Railway runs down the west bank of the Columbia river to Trail, the smelter centre, and thence to Rossland. The railway has also been extended into the Boundary Country west of Kootenay



CANADIAN PACIFIC STEAMER ON ARROW LAKE

East Kootenay

Lying immediately to the east of West Kootenay and extending to the eastern boundary of the Province is East Kootenay—a wonderfully rich country now on the eve of full development and expansion. The great wealth of this region has been known for years, and in the early days of placer mining it almost rivalled Cariboo in its yield of millions, but the lack of means of communication and the heavy cost of transportation of supplies and machinery, combined with the rich discoveries in other parts of the Province which were more easy of access, naturally retarded mining operations seriously and prevented the work of development reaching those immense proportions which, under more favorable conditions, would have been attained. The

EAST KOOTENAY

completion of the Crow's Nest Pass Branch of the Canadian Pacific Railway (from its transcontinental line through Southern Alberta and East and West Kootenay and its extension to the camps of the Boundary Country) has removed these obstacles, and its construction and operation have already given a marvelous impulse to the development of its boundless mineral resources. By this road easy access is gained to this hitherto almost sealed region, and a new mining empire—second to none in all that makes wealth—is being opened to the world. The magnitude of the latent riches of this vast tract can now scarcely be estimated, nor will the full extent of its mineral deposits be known for some years, for although the work of prospecting has been vigorously prosecuted with most gratifying results there is still a large area to be explored. The existence of large bodies of ore has already been established, but how wide their distribution is can only be determined by actual



AT WORK IN THE MINE

search. Prospectors find here magnificent opportunities for discovery and practical mining men and capitalists an unsurpassed field for investment. Mining operations are being carried on extensively and successfully in the long stretch of country between Golden on the north and Moyie Lake. The immense low grade silver-lead mines, including the famous North Star and Sullivan groups near Kimberley; the rich silver-lead deposits on Moyie Lake, embracing the St. Eugene, Lakeside and other mines; the promising copper properties on Bull river and on Elko river, both rivers capable of developing great electrical power; the extensive hydraulic works on Wild Horse creek; and the placer mines on Perry, Weaver and other streams, are a few only of several promising camps, that with the recent advent of the Crow's Nest Pass Branch have sprung into prominence with the mining investment public. The output in 1900 amounted to \$2,210,151.

Besides gold, copper and silver-lead, East Kootenay possesses what is believed to be the greatest coal deposit in the world—seams overlying each other for an exposed depth of 132 feet. With the proximity of these two minerals there is every prospect that great manufacturing centres will arise in East

EAST KOOTENAY

Kootenay whose coal measures will also supply the coke required for its own smelters and for those of West Kootenay. The coal mines at Fernie, on Elk River, are already under process of development, shipments are being made and a large number of coke ovens, whose output supplies the West Kootenay smelters, are in operation.

The resources of East Kootenay, unlike those of mining regions generally, are not confined to minerals. Invaluable oil deposits exist in the south-eastern part, the quality of whose product is said to be the purest ever discovered; and in the wide valleys are great stretches of arable land on which the most favorable conditions exist for raising stock, grain and ordinary farm produce, with the additional advantage of the settler being assured an excellent cash market close at home.

While East Kootenay is still in its infancy, it has several towns:—Fernie, near the coal fields, Cranbrook, a railway divisional point, Wardner, Moyie and Moyelle on the Crow's Nest Pass line, Fort Steele, Kimberley and Windermere also in the central part, and Golden on the main line of the Canadian Pacific, and with the anticipated coming development these will not only increase in population and wealth, but others will arise in the different sections.

HOW TO REACH EAST KOOTENAY

The East Kootenay mining camps are most easily reached from the east by the Canadian Pacific Railway and its Crow's Nest Pass Branch from near Medicine Hat. There is a daily service with through sleeping cars to Kootenay Landing. From the west, the district is reached via Revelstoke, the Arrow and Kootenay Lakes and the Crow's Nest Pass Railway; and connection is also made with the trains of the Crow's Nest Pass Line at Macleod, in the district of Alberta, by way of Calgary, on the main line of the Canadian Pacific Railway. Windermere is reached from Golden by steamer in summer and stage in winter, or from Cranbrook by stage.

The Boundary Country

Immediately to the west of the Kootenay country and separated from it by the Gold Range of mountains is an extensive mineral bearing area, forming the extreme south-east portion of the Yale District. It includes four distinct mineral basins, viz., that around Christina Lake; that adjacent to the North Fork of Kettle River; the important mining camps of Boundary Creek; and the main Kettle River, with Rock Creek and other tributaries. The whole area covers a distance east and west of about 40 miles along the international boundary, and extends about 50 miles northward. Numerous finds of ore have been made in all four of the mineral basins named, but there is still much unexplored country, offering an attractive and easily accessible field to the prospector. On many of the claims located, large deposits of ore, carrying good values in gold and silver or in gold and copper, have been opened up and numbers of steam plants have been provided for the purposes of permanent development;

BOUNDARY COUNTRY

in fact, the Boundary Country has remarkably large deposits of gold-copper ore. The Canadian Pacific Railway Co.'s lines have been extended from West Robson, on the Columbia River, through the district to Midway, a distance of 100 miles, and traverse the most resourceful parts of the country—the Christina Lake, Kettle River and Boundary Creek, with branch lines to Deadwood, Summit, Phoenix and Wellington Camps, and other spurs will be constructed by the railway company as mining development calls for them. Smelters of large capacity are also in active operation at Grand Forks and Greenwood.

The agricultural, horticultural and pastoral possibilities of the fertile valleys and grassy hill-sides of this district are great, but these resources have not yet been largely developed. Fruit and vegetable growing is receiving a great deal of attention, there being a good home market as the mines attract an ever-increasing population. Facilities for irrigation have already been provided in parts of the district, and small holdings of suitable land are obtainable. Farming, dairying and poultry raising give good returns, the local demand for their products being large and constant. The temperature is generally mild, excessive heat



AT "TRAIL" SMELTER

or extreme cold being seldom, if ever, experienced here. The total annual rainfall is light, so the climate is dry and healthy.

The chief towns of this part of the Yale District are Cascade City, Columbia, Grand Forks, Eholt, Phoenix, Greenwood, Midway, and other towns are springing up in consequence of the construction of the Railway.

With its extensive area of mineral lands, its large tracts of fertile agricultural fields and rich pasturage, and its magnificent timber limits, the Boundary Country will naturally become one of the most flourishing sections of the Province.

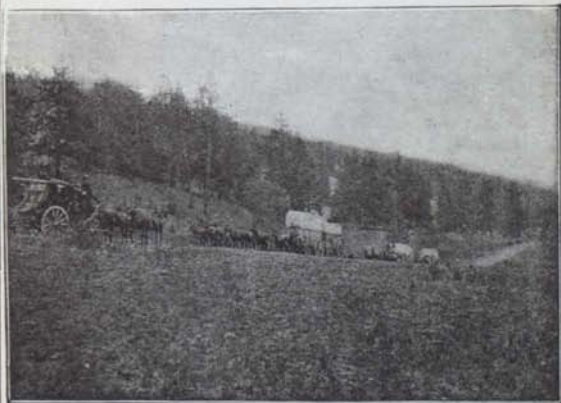
To the west beyond Rock Creek is Camp McKinney, in the Osoyoos district, where the Cariboo mine has already become a dividend payer to the extent of \$350,000. Still further west is the Fairview camp, at which considerable development work is being done.

GOLDEN CARIBOO

HOW TO REACH BOUNDARY COUNTRY

This region is reached by the Canadian Pacific Railway and its Crow's Nest Pass Branch to Robson, or by the Canadian Pacific to Revelstoke, thence by branch railway and steamer to Robson, from which there is a daily train service on the Columbia & Western branch of the Canadian Pacific Railway to Gladstone, Cascade City, Grand Forks, Columbia, Eholt, Greenwood and Midway. Another route, for those coming from the west, is by the Canadian Pacific Railway to Sicamous, thence by branch railway to Vernon and Okanagan Landing on Okanagan Lake, from which the fine Canadian Pacific Railway steamer "Aberdeen" sails every Monday, Wednesday and Friday for Penticton at the foot of the lake, where connection is made for the different mining camps in the Osoyoos district by stage. Camp McKinney is reached in thirteen hours from Penticton. Fairview (28 miles) and Osoyoos (40 miles) are also reached by stage from Penticton.

To the south of Grand Forks, and reached by a good wagon road—a distance of 35 miles—is Republic, Washington, known as one of the richest gold camps on the continent. Nine miles south of Rock Creek is the Myers' Creek Camp, and to the southwest are the camps surrounding Oroville and Loomis, that are more easily and directly reached from the C. P. R. than any other means.



EN ROUTE TO CARIBOO

CARIBOO

The richest of these marvelous auriferous alluvial deposits are in the Cariboo district, a region which, with the neighboring mines of Omineca and Cassiar, has yielded fully \$60,000,000 in gold since their discovery in 1858, the most of it being taken out with the primitive appliances of the earlier days. In the eighteen years up to 1876, the yield was above \$40,000,000, nearly all of which came from the shallower placer deposits and gravels in the beds of the present streams, and principally from Williams

BRITISH COLUMBIA

BRITISH COLUMBIA'S MINING LAWS

(Subject to alteration and not applicable
to the Yukon)

The mining laws of British Columbia are most liberal. A Free Miner may stake out a claim practically wherever he discovers mineral, provided such ground has not already been taken up by another Free Miner, and as the mineral wealth of the country is only beginning to be discovered the field for successful prospecting is very wide.

Having discovered mineral, a Free Miner can obtain perfect title to his discovery for a nominal fee, the only condition being that he shall do a small amount of development work on it each year.

LODE MINING

Under the Mineral Act, every person over eighteen years of age, and every joint stock company shall be entitled to all the privileges of a Free Miner, on taking out a Free Miner's certificate, the cost of which is \$5 a year for an individual, and from \$50 to \$100 a year for a company, according to its capital, and is procurable from any Gold Commissioner or any Mining Recorder. A Free Miner, and such only, can locate and hold mineral claims or interests therein, under the mining laws in force at the time, during the continuance of his certificate, but no longer.

A mineral claim must not exceed 1,500 feet long by 1,500 feet wide, and must be marked by two legal posts, numbered 1 and 2, placed as nearly as possible on the line of the lode or vein, and not more than 1,500 feet apart. The line from 1 to 2 is the location line, and the claim may extend any number of feet to the right and to the left of said location line, provided the total distance on both sides does not exceed 1,500 feet.

A legal post marked "Discovery Post" must also be placed on the lode where it was discovered. On No. 1 post must be written: "Initial Post," the name of the claim, the name of locator, date of location, approximate bearing of No. 2 post, length and breadth of claim, and number of feet to the right and the number of feet to the left of location line. On No. 2 post: Name of claim, name of locator, and date of location. The line from 1 to 2 must be distinctly marked by blazing trees, cutting underbrush, or planting posts.

All records must be made at the Mining Recorder's Office of the mining division in which the claim is situated, with affidavit that mineral has been found on the claim. A mineral claim must be recorded within fifteen days after location, if within ten miles of the office of the Mining Recorder. One additional day is allowed for every additional ten miles. The locator must furnish the Mining Recorder with the following particulars, in addition to the affidavit above mentioned, at the same time the claim is recorded, paying a fee of \$2.50 for recording claim and 25 cents for filing affidavit: Name of claim, name of locator, number of location, number of Free Miner's certificate, where the mine is situated, direction or bearing of location line, length and breadth of claim, number of feet to the right and number of feet to the left location line, and date of location.

To hold a mineral claim, work to the value of \$100 must be done on the claim each year from date of record, to the total value of \$500. An affidavit made by the holder, or his agent, giving a detailed statement of the work done must be filed with the Gold Commissioner or Mining Recorder, and a certificate of work obtained from the Gold Commissioner or Mining Recorder, and recorded (fee \$2.50) before the expiration of each year from the date of record. The holder of adjoining mineral claims may, subject to filing a notice of his intention with the Gold Commissioner or Mining Recorder, perform on any one or more of such claims all the work required to entitle him to a certificate of work for each claim. Any money or labor expended in constructing a tunnel to develop a vein or lode will be deemed to have been expended on such vein or lode. In lieu of the above annual work, the holder of a mineral claim may pay to the Mining Recorder \$100, get a receipt and record the same, each year for 5 years from date of record.

To obtain a certificate of improvements to a mineral claim the holder must have done work on his claim to the value of \$500; had the claim surveyed and marked out by a provincial land surveyor, whose field notes and plans must be immediately forwarded to the Lands and Works Department; posted notice on claim and in Mining Recorder's office for sixty days; filed copy of surveyor's field notes and plan with Mining Recorder; inserted copy of notice in *British Columbia Gazette* and in some provincial newspaper circulated in the district, for

GOLDEN CARIBOO

and Lightning Creeks. The wealth of these placers was naturally to a great extent exhausted after years of incessant working. Practical miners and scientists agree that there are other rich deposits in the district, and express no doubts whatever of the existence of gold, far beyond comparison with the opulence of the shallow placers from which millions had been extracted, on the bottoms of old water courses and, in some places, in old river channels which have been elevated above the old level and beyond the reach of water without a costly outlay for hydraulic machinery. Dr. Dawson, of the Geological Survey, after a personal inspection of Cariboo some years ago, asserted that there was an immense quantity of gold yet available, that the country had not been thoroughly prospected, that over the whole region where surface diggings had been carried on the deeper ground would prove very rich on proper exploiting, and that the only obstacles to its immediate development were lack of exact engineering knowledge on the part of the miners, the prohibitory cost of transportation charges on heavy machinery and the great cost of labor



HYDRAULIC MINING IN CARIBOO

and supplies. These obstacles have been largely overcome by the construction of the Canadian Pacific, and the improvement of the great highway from that railway to northern British Columbia, with the result that the work of development has since been vigorously and extensively prosecuted and greatly extended areas profitably worked. During the past three years several costly hydraulic plants have been introduced by different wealthy mining companies, with capital ranging from \$200,000 to \$500,000, which are now operating well-known claims with most gratifying results, and there is every prospect of a second **golden harvest** which in its immensity and value will completely overshadow that which made Cariboo famous over thirty years ago. The output for the district in 1900 was \$672,000, which amount will be largely increased during the present year.

In addition to the properties of these Companies, there are numerous other large gravel deposits, many of which are now being prepared for working by companies with ample capital, and which only require properly directed efforts to ensure large

GOLDEN CARIBOO

returns. Both placer and quartz mining received more than usual attention during the past year, and it has been ascertained that large bodies of ore will yield satisfactorily to cyanide treatment. Hundreds of men have found employment, and none who really desired work at fair wages have failed to secure it.

At the bottom of the Fraser and in its tributaries along a great part of its whole length gold lies in unknown quantities, but, for want of proper facilities for working these deposits and separating the gold from the sand, that ample reward hoped for was not attained. In recent years, however, the attention of experienced scientific mining men has been attracted to these fields, and, well backed by capital, they are making an important movement in river dredging, and by other means are procuring gold from the river beds and bars.



QUESNEL FORKS

Several promising quartz-bearing locations are also being developed in the Lillooet district, and as machinery capable of treating the refractory ores on the most improved methods has been imported, the results already attained are proving a great impetus to the further development of this rich region, which will be still further augmented on the completion of additional roads, some of which are under course of construction.

Omineca and the Peace River countries, beyond Cariboo, the former of which is best reached from Ashcroft, and the latter by way of Calgary and Edmonton, east of the Rocky Mountains, are attracting much attention, as there is a large and practically unexplored region that is known to be rich in gold, copper and silver. In Omineca, three hydraulic companies are operating successfully, and it is anticipated that during 1900, Tom, Manson, Vital, and Slate Creeks and Nation River will be the scene of active exploration and development.

Considerable development is also anticipated in the Cassiar district, as improved means of communication are established with that rich region, and at Atlin Lake in the northern part of the Province, reached from Vancouver and Victoria by way of Skagway, are newly discovered gold fields of great richness.

GOLDEN CARIBOO

These new gold fields, are easily reached by steamer from Vancouver and Victoria to Skagway via C. P. Ry. boats, and thence by railway over the White Pass to Bennett and steamer.

GOLD ABOUNDS

in every valley, and every stream that empties into it, and there is no estimating the unusual activity in the Cariboo mining circles, some of the richest places merely awaiting the advent of capital for that development which the new condition of affairs has rendered easily possible. When such marvelous results as from \$50 to \$1,000 have been obtained from a square foot of ground by the pioneering miner who had limited means and primitive methods of working, how much more satisfactory are the returns likely to be by capably organized companies, with the most modern appliances to extract the gold, and having unlimited capital behind them? Already this new era in mining in British Columbia is attracting the world's attention to what has been proven one of the most remarkable deposits of gold ever discovered.



THE CRANBY SMELTER

HOW TO REACH CARIBOO

The Cariboo region and the northern interior of British Columbia can only be reached from the east and west by the Canadian Pacific Railway to Ashcroft, and thence by stage three times a week, to Clinton, and semi-weekly thence to Barkerville and intervening points, but on application in advance, arrangements can be made at Ashcroft for the transportation of large or small parties at any time. Quesnel Forks is reached from 150-Mile House, on the great highway (135 miles from Ashcroft), and Horsefly from 108-Mile House, by weekly stages. Alexis Creek, in the North Chilcoten country, is reached from 150-Mile House weekly, by a 90-mile stage drive, and South Chilcoten is reached by Clinton to Alkali Lake (90 miles) weekly in summer and semi-monthly in winter. There is a stage twice-a-week from Ashcroft

GOLDEN CARIBOO

to Lillooet, via Hat Creek, 64 miles. The roads are excellent, the stopping places convenient and with good accommodation, and the trip is not an uncomfortable one. Travelling by day only, Quesnel Mouth and other points are reached in three days, and Barkerville, the terminus of the main stage route, in four. During the season of navigation (May 1st to November 15th) the steamer Charlotte will run regularly between Soda Creek and Quesnel, connecting with the stages. Meals and lodgings en route are 50 cents each. There is telegraphic connection between Ashcroft, Barkerville and intervening points.

CANADIAN PACIFIC TRAINS

The Atlantic voyage is made from Southampton or Liverpool, and connection is made from the port of landing—St. John, N. B., Halifax, N. S., in winter, and Montreal and Quebec in summer, New York and Boston—with the through trains of the Canadian Pacific Railway, which run from Montreal and Toronto daily. Attached to these trains are palatial sleeping cars and superb dining cars and first class coaches. Tourist cars, very similar in general appointment to the first-class sleepers, fully upholstered, with portable section partitions which ensure perfect seclusion to each berth by night, and a complete equipment of mattresses, linen, blankets, pillows, etc., range in the kitchen apartment for those wishing to prepare their own meals, lunch tables, etc., run through from Toronto to the Pacific Coast without change, leaving the Union Depot every Tuesday and Saturday and the Windsor Street Station, Montreal, on Thursdays. The only charge for these superb accommodations, in addition to the regular SECOND-CLASS railway fare, is \$6.50 to Revelstoke, and \$7.50 to Coast points from Toronto, and \$7.00 and \$8.00 respectively from Montreal and Boston.

Colonist Sleepers run through daily. No extra charge is made for accommodation in these cars, but passengers must provide their own bedding.

FOR FURTHER INFORMATION APPLY TO ANY AGENT OF THE CANADIAN
PACIFIC RAILWAY, OR TO

ARCHER BAKER, European Traffic Manager, 9 James St., Liverpool; 67 and 68
King William St., E. C., and 30 Cockspur St., S. W., London, Eng.;
and 67 St. Vincent St., Glasgow, Scotland.

A. H. NOTMAN, Asst. Genl. Pass. Agt., 1 King St. E., Toronto.

H. J. COLVIN, Dist. Pass. Agt., 197 Washington St., Boston.

E. V. SKINNER, Genl. East. Agt., 353 Broadway, New York.

J. H. THOMPSON, Freight and Pass. Agt., 129 East Baltimore St., Baltimore.

H. McMURTRIE, Freight and Pass. Agt., 629-631 Chestnut St., Philadelphia.

W. W. MERKLE, City Agt., 1229 Pennsylvania Ave., Washington.

A. J. HEATH, District Pass. Agt., St. John, N. B.

A. E. EDMONDS, City Pass. Agt., 7 Fort St. W., Detroit.

A. CAMPBELL SHAW, Genl. Agt. Pass. Dept., 228 S. Clark St., Chicago.

M. M. STERN, Dist. Pass. Agt., 627 Market St., Palace Hotel Bldg., San Francisco.

W. R. CALLAWAY, Genl. Pass. Agt. Soo Line, Minneapolis, Minn.

W. S. THORN, Asst. Genl. Pass. Agt. Soo Line, St. Paul, Minn.

G. W. HIBBARD, Genl. Pass. Agt. South Shore Line, Marquette, Mich.

E. J. COYLE, Asst. Gen. Pass. Agt., Vancouver, B. C.

C. E. MCPHERSON, Gen. Pass. Agt., Western Lines, Winnipeg.

C. E. E. USSHER, Genl. Pass. Agt., Eastern Lines, Montreal.

ROBT. KERR, Passenger Traffic Manager, Montreal.

BRITISH COLUMBIA

sixty days after posting notice on claim; and filed with Mining Recorder affidavit of himself, or his agent, in the required form and to the effect that the above conditions have been complied with.

Applications for Crown grants must be made to Gold Commissioner within three months from date of certificate of improvements. The holder of a certificate of improvements, on making application for Crown grant, must enclose certificate of improvements and the Crown grant fee of \$25. The holder of a certificate of improvements, which has been duly recorded, in respect of a mineral claim *inside* the railway belt, is entitled to a Crown grant of such claim on payment of Crown grant fee of \$25, and making application as above; but in respect of a claim within the railway belt, a further payment of \$5 *an acre* is required. *Or*: Any lawful holder of a mineral claim can obtain a Crown grant by paying to the Government of British Columbia \$500 in lieu of expenditure on claim, after having complied with all the provisions relating to certificates of improvements except such as have respect solely to work required to be done on the claim.

PLACER GOLD MINING

Regulated by the "Placer Mining Act 1897 and Amendments."

FREE MINERS

Under this Act any person over 18 years of age, and any joint stock company duly incorporated under the laws of this Province, shall be entitled to the rights and privileges of a Free Miner upon taking out a Free Miner's Certificate, which is not transferable.

This Certificate costs for an individual \$5.00 per year, and for a company \$50.00 or \$100.00 per year, according to the capital of the company, and may be obtained from any Mining Recorder.

Only persons or joint stock companies holding such Free Miner's Certificate shall be entitled to any right or interest in or to any placer claim-mining lease, flume or any mineral in any ground comprised therein.

And such person or company shall only be entitled to such as long as they hold an unexpired Free Miner's Certificate.

No Free Miner can hold any claim or any interest therein as trustee or otherwise for any corporation not entitled to take out a Free Miner's Certificate.

A Free Miner under the Placer Act has all the privileges of a Free Miner under the Mineral Act.

A Free Miner may enter, locate, prospect or mine for gold and other precious metals on any lands in the Province, except Indian Reserves, Government Reserves for townsites or ground already taken up by another Free Miner.

He may locate and record one placer claim on each separate creek, the recording fee being \$2.50 per year, and he may hold such claim as long as he continuously works it during working hours, but should he fail to work it for a period of 72 hours it would be considered abandoned and forfeited, except for sickness or reasonable cause, or leave of absence from the Gold Commissioner of the District.

Size of placer claims vary somewhat, but are usually 250 feet along the creek. A discoverer of a new diggings can stake 600 feet, or two partners 1,000 feet.

HYDRAULIC PLACER GOLD MINING

In diggings which have been found not to be rich enough to be worked by the ordinary placer sluicing, a lease for a term of 20 years may be obtained by a Free Miner, from the Gold Commissioner, with the sanction of the Lieutenant-Governor-in-Council, to work such ground by hydraulicing.

In abandoned creek diggings the area that may be so taken up is $\frac{1}{2}$ mile along the creek, in any other placer mining ground the area is limited to 80 acres, but not more than 500 feet along the creek or river.

Upon making application for a lease a deposit of \$20.00 is required.

The terms of the lease vary with the ground applied for, but development work to the amount of \$1000.00 per annum must be done on each leasehold.

DREDGING FOR PLACER GOLD

The Gold Commissioner of a District may with sanction of the Lieutenant-Governor-in-Council, grant a lease for a term not exceeding 20 years, of the bed of any river below low water mark, for dredging purposes, for a distance not exceeding five miles, at a yearly rental of \$50.00 per mile, and 50 cents royalty per ounce, of all gold recovered, and development work of \$1000.00 per mile per annum. The value of any new plant or machinery employed to count as money expended on development.

PRECIOUS STONE DIGGINGS

Similar leases for the purpose of mining for precious stones may be similarly obtained—but shall not exceed 10 acres—but the right to mine for precious stones shall not include the right to mine for gold or other precious metals, unless specially provided for.

TO PROSPECT FOR COAL

A special License costing \$50.00 must be taken out and certain notices given.

The Gold Commissioners and Mining Recorders will furnish all information desired as to the mining laws, but any such information, or copies of the mining acts or Reports of the Department of Mines, may be obtained from the Minister of Mines, Victoria.

JULY, 1901

GOLD

in

Kootenay

Boundary Country

and

Cariboo

REACHED BY THE

**CANADIAN PACIFIC
RAILWAY**

MAP OF
CANADIAN PACIFIC
RAILWAY

KOOTENAY DISTRICT

BRITISH COLUMBIA

COPYRIGHTED, 1897, BY POOLE BROS. CHICAGO.

10 5 0 10 20 30

SCALE OF STATUTE MILES.

Line of Canadian Pacific Ry.

Projected Route.

Boat Route.

Trail.

