



ONTARIO

917.1352
C78
Baldwin
Room

METROPOLITAN
TORONTO
CENTRAL
LIBRARY
Canadian
History

Souvenir of the City of Hamilton

Published for A. M. CUNNINGHAM, Photographer, Hamilton, Ontario

by THE JAMES BAYNE COMPANY

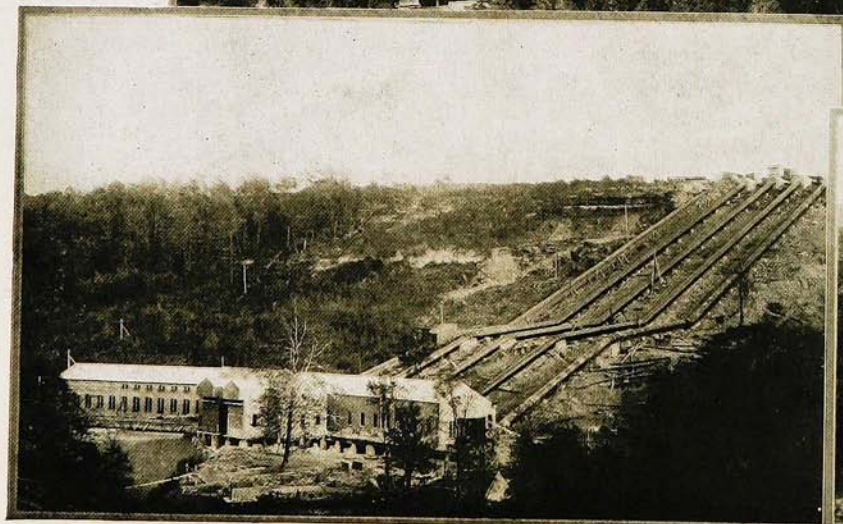
Grand Rapids, Mich.

HAMILTON stands on a level plain, having the steep wall of the Niagara escarpment on the south, the placid waters of Burlington Bay on the north, the broad, blue sweep of Lake Ontario to the east, and billowy undulations of gentle acclivities rising to the Flamborough and Ancaster summits on the west. The city is best seen from a jutting promontory on the mountain immediately south of its easterly limit. From that point the panorama, spread out on all sides, is one of the most delightful which this beautiful earth can give. Immediately before us lies the city, embowered in trees, with spires reaching up through the foliage, here and there the tall chimney of a factory, and occasionally a mansion, a cottage, or the comfortable home of the thriving artisan, half shown among the ever-present maples which are the beauty and the glory of the place. The level plain at our feet reaches out toward the east, covered with orchards and vineyards, checkered with squares of waving grain, and variegated with dark clumps of forest trees and the comfortable homes and massive barns of well-to-do farmers. A little to the right we see the long sandy beach which separates Burlington Bay from Lake Ontario. It is nearly five miles long and is covered from end to end with the cottages of summer residents. About midway of the beach we see the Burlington canal, with its long lines of piers stretching out into the lake on the one hand and into the bay on the other. The white lighthouses and the two iron swing bridges by which the canal is crossed, lend picturesqueness to this channel, which gives Hamilton water communication with the great lakes. And beyond the beach the broad, blue waters of Lake Ontario—loveliest of all the great lakes of the world—reach out to the far horizon. Amid such surroundings, made glorious by the hand of Nature, and prosperous by the industry of man, lies the city of Hamilton. It enjoys the blessings of a fine climate, pure water, and the neighborhood of a country which, for the wide range of its fruits and cereals, cannot be surpassed in the world. Hamilton is pre-eminently a manufacturing town. In almost every quarter may be seen the tall chimneys of hives of industry in which thousands of artisans gain their subsistence, and where goods are manufactured for markets in every part of the Dominion, and for many in foreign countries. Among these may be mentioned: The Canadian Westinghouse Co., The International Harvester Co., Hamilton Steel and Iron Co., Hamilton Cotton Co., Imperial Cotton Co., Sawyer-Massey Co., Norton Mfg. Co., Tuckett's Tobacco Factory, Burrow, Stewart & Milne, Gurney-Tilden Co., D. Moore Co., Gartshore-Thompson, and many others. The Hamilton Cataract Power Co. with its generating station at DeCew Falls, 40 miles east of the city, furnishes electric power for the great majority of the manufactories, as well as for lighting the city and operating the street cars and radial railroad systems. There are twenty-three common schools in the city with an average attendance of about 10,000, five Roman Catholic separate schools with an average attendance of 2,000, The Collegiate Institute, Ontario Normal College and several private schools. Hamilton is essentially a city of churches, there being 54 places of worship in the city. The retail stores are large and up-to-date and equal to any in the Dominion. Hamilton's market is celebrated the world over; few cities have the opportunity of buying such a variety of products direct from the producer as is offered here. The parks are numerous and beautiful, Dundurn park is especially worthy of a visit. Sports of all sorts flourish. Hamilton is very favorably situated for yachting, and the club house of the Royal Hamilton Yacht Club at the beach is a favorite resort for many citizens. Hamilton's population is 60,000.

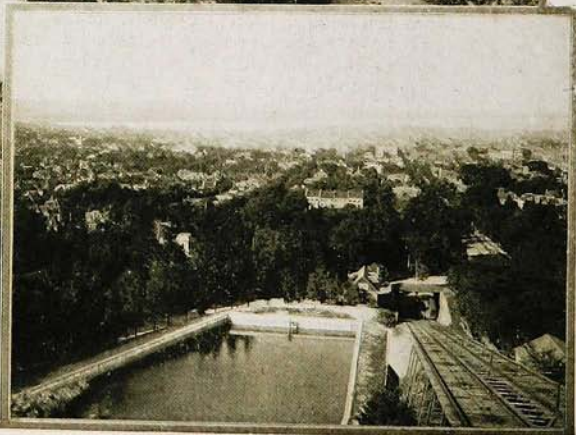
REFERENCE

BR
917.1352
C78

General View of Hamilton



Generating Station of Hamilton Cataract Power, Light and Traction Co., Ltd.
Power Glen



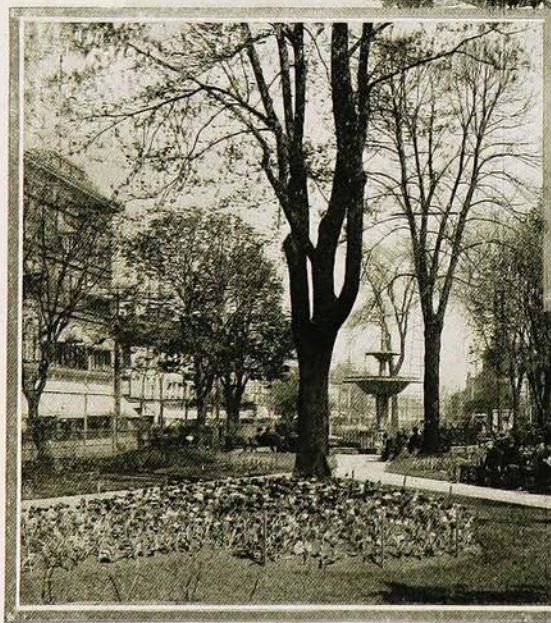
James Street Incline Railway and Reservoir



Public Library



City Hall



Gore Park



Gore Park



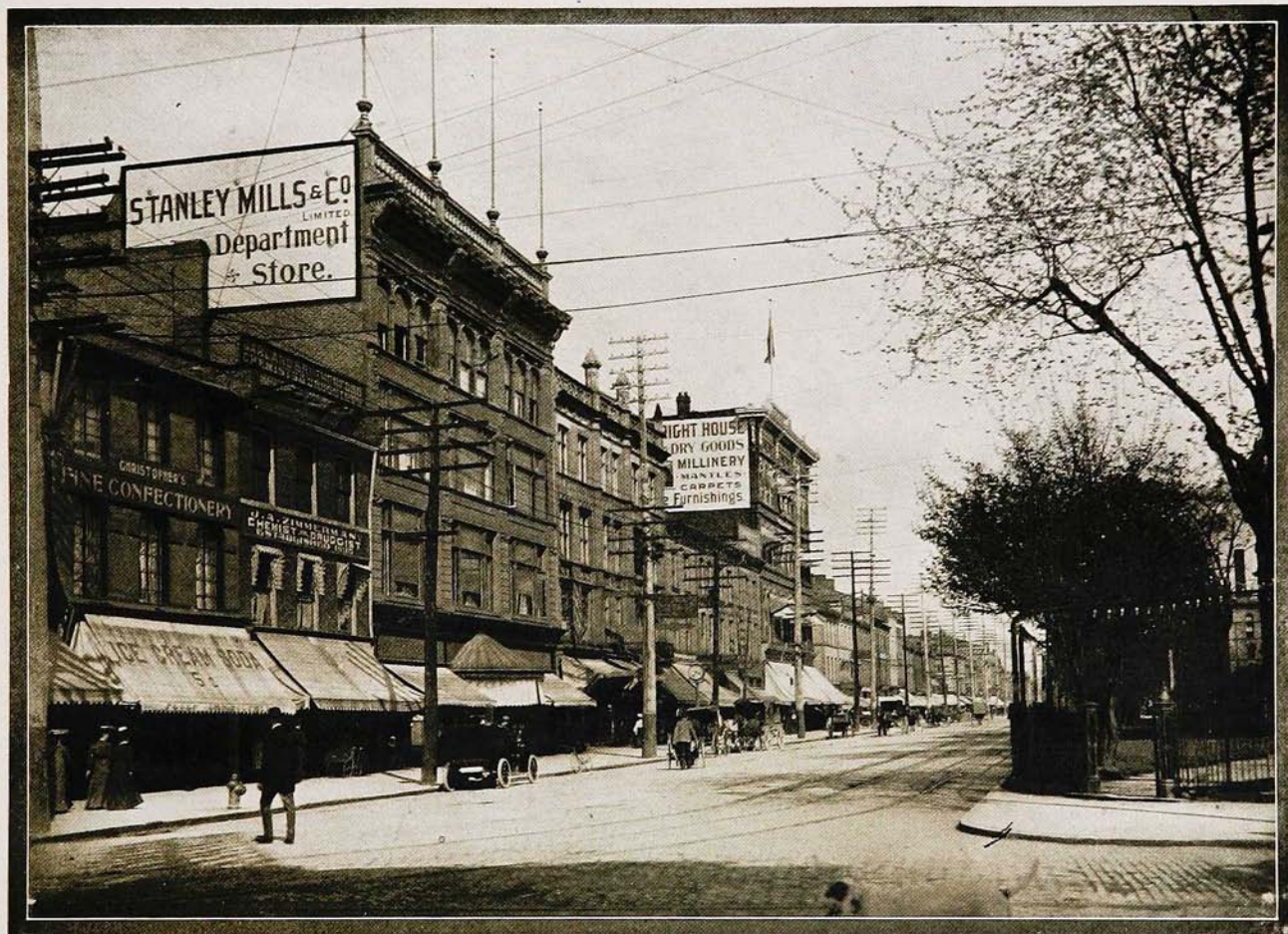
Post Office



Toronto, Hamilton & Buffalo Depot



James Street from Main Street (Looking North)



King Street East from James Street



King Street East from Hughson Street



Canadian Bank of Commerce



Traders Bank of Canada



Bank B. N. A.



Conservatory of Music

11
Royal Hotel



Dundurn Castle, Dundurn Park



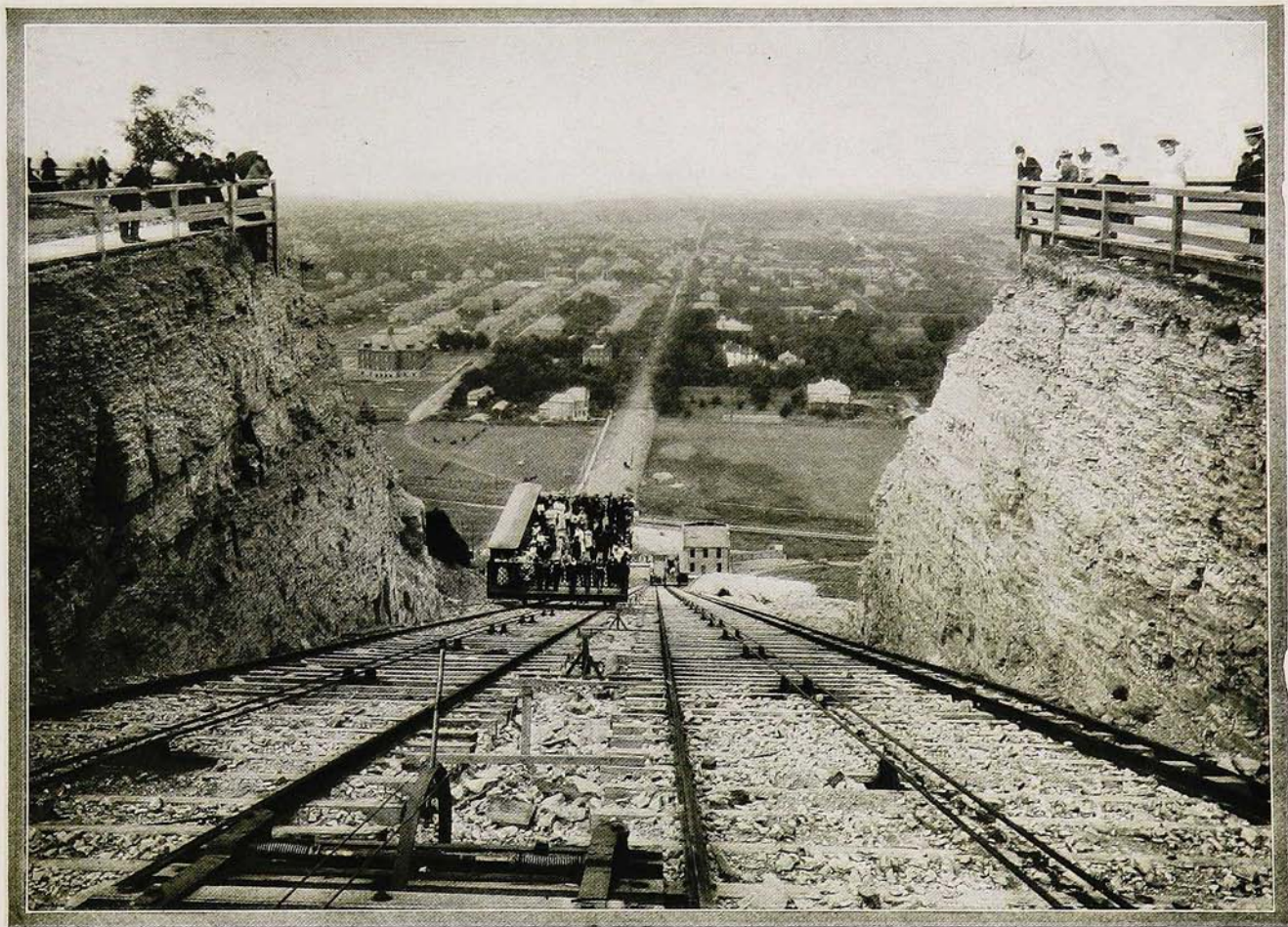
King Street, East



St. Joseph's Hospital



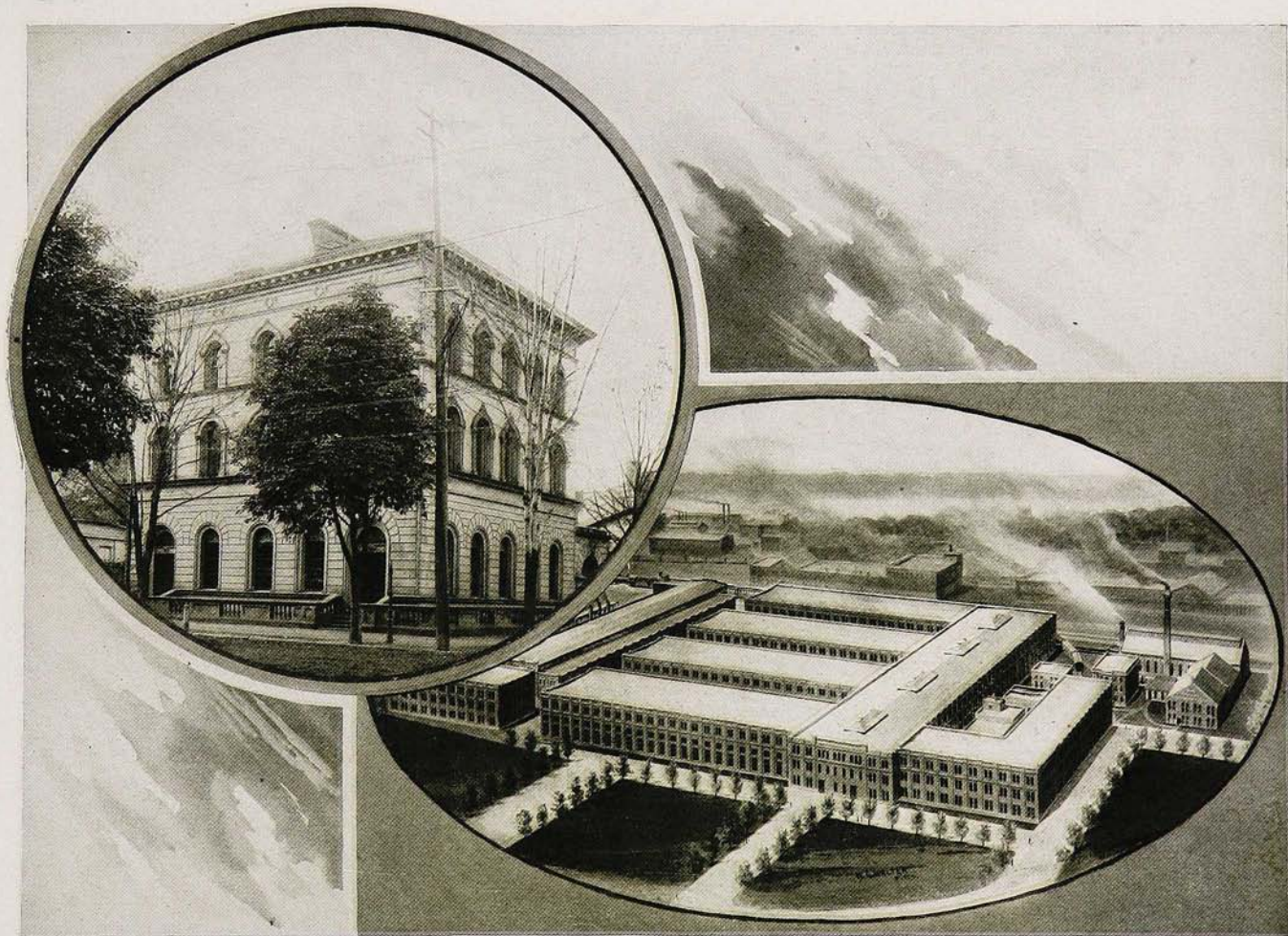
City Hospital and Nurses Home



Mount Hamilton Incline Railway



James Street Incline Railway



Bank of Montreal

Canadian Westinghouse Co's Works



Hamilton Collegiate Institute and Ontario Normal College



Court House

Residence of G. H. Bisby, Esq.



Residence of Wm. Southam, Esq.

Residence of C. W. Grantham, Esq.



The Hamilton Club

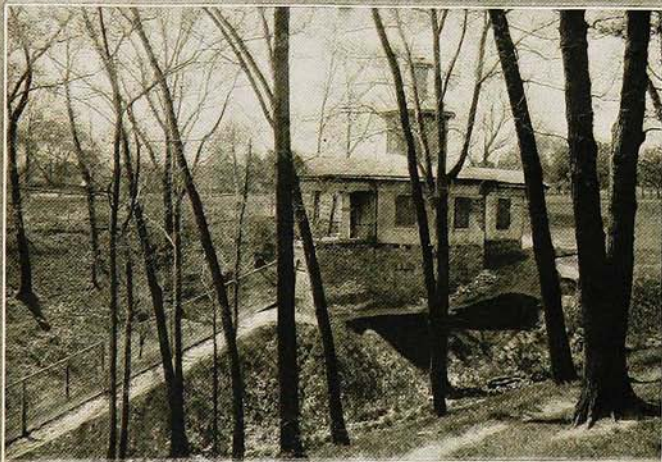


Bridges over Desjardius Canal

The "Zoo," Dundurn Park



"The Battery," Dundurn Park



In Dundurn Park



Dundurn Castle, (North Side) Dundurn Park



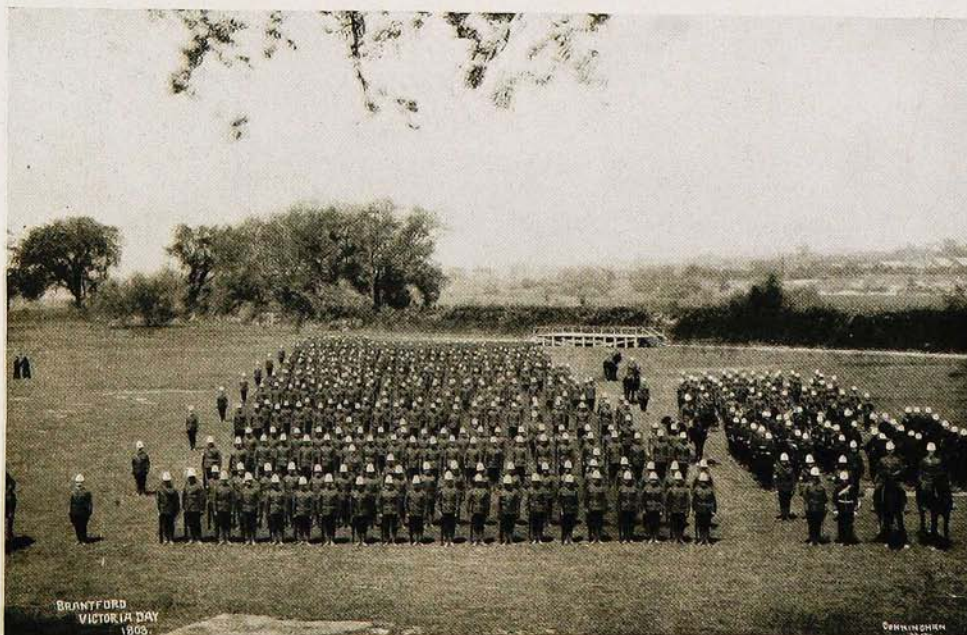
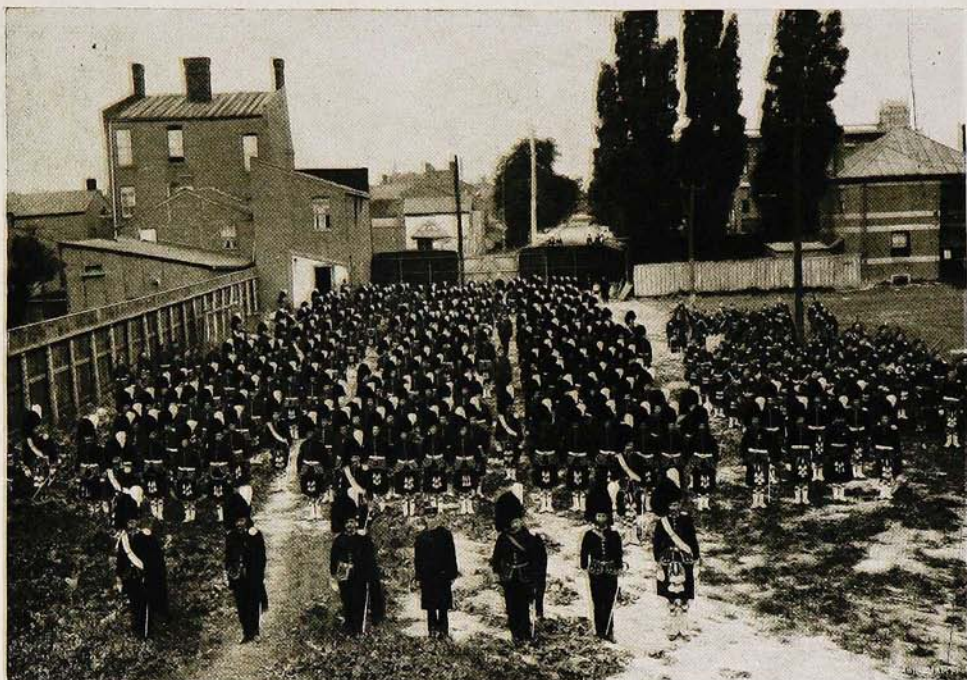
James Street South from Main Street

Christ Church Cathedral (Anglican)



Church of Ascension (Anglican)

91st Regiment Canadian Highlanders



The XIII Regiment

25



G. T. R. R. Station, Hamilton



James Street South

Residence of Mrs. Edwd. Martin



Residence of Geo. E. Lucket, Esq.



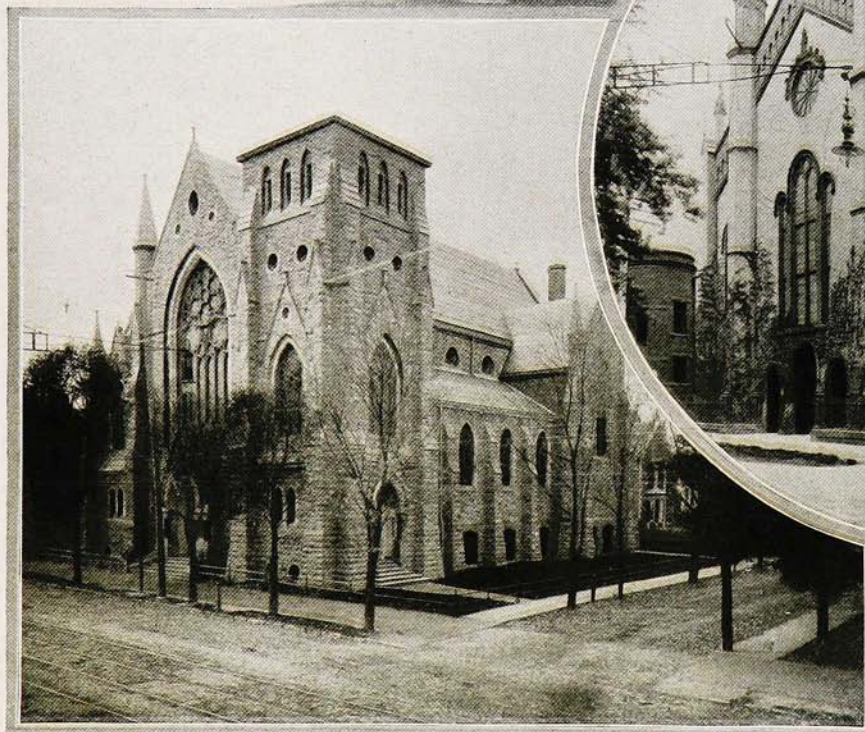
Residence of Mrs. Sanford



Residence of S. O. Greening, Esq.



Hughson Street, South



James Street Baptist Church

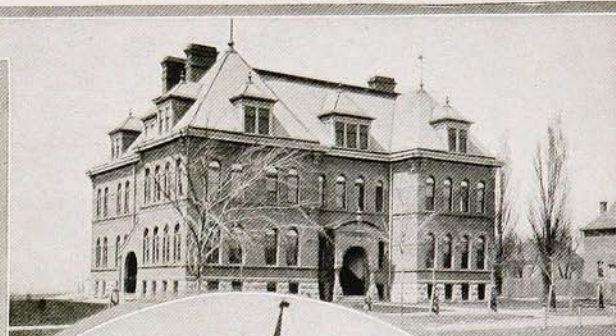


Central Presbyterian Church

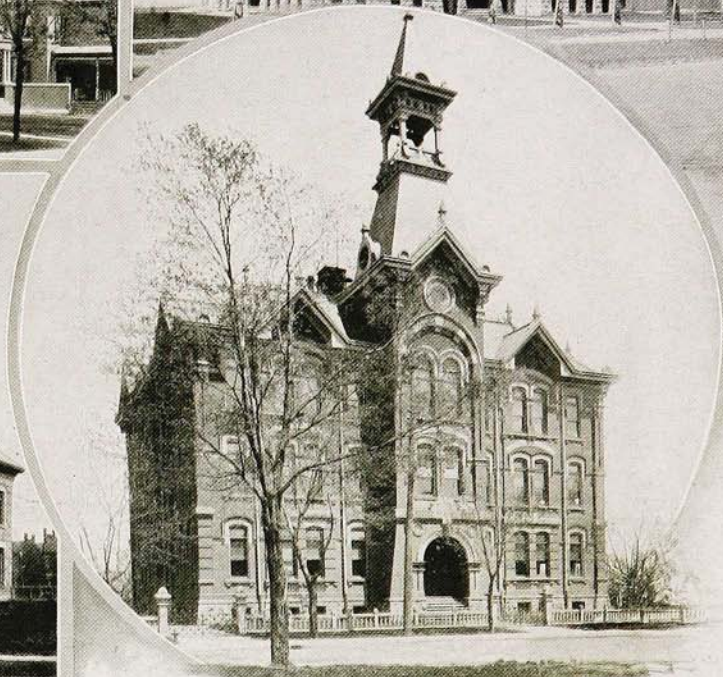
Kingsthorp School (Ladies)



Sophia Street School



Central School



Queen Victoria School



Ryerson School



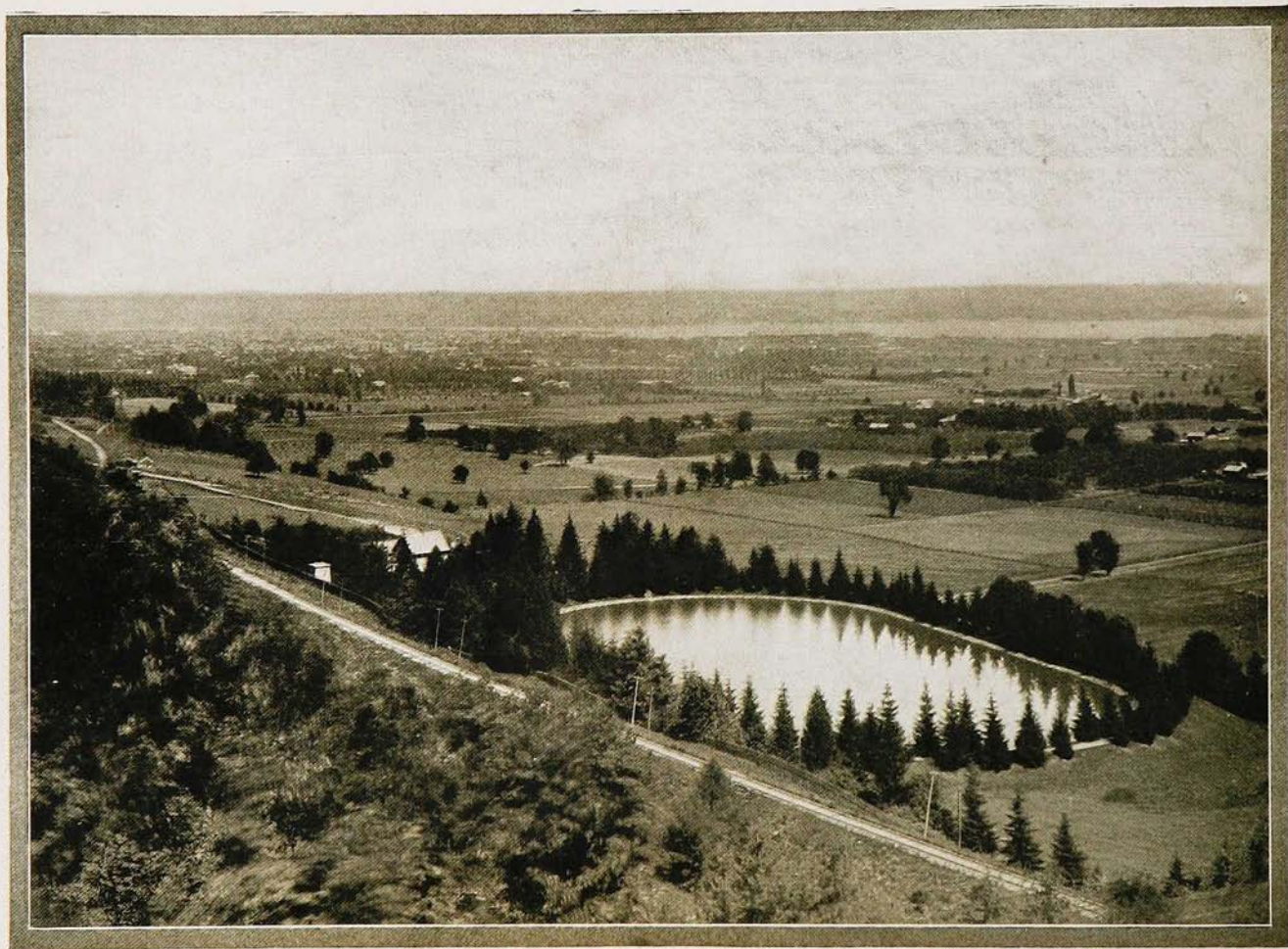
St. Mary's Cathedral, R. C.



King Edward School



Highfield School for Boys



Reservoir

Residence of J. R. Moodie, Esq.



Residence of F. W. Fearman, Esq.



Residence of Wm. Copp, Esq.

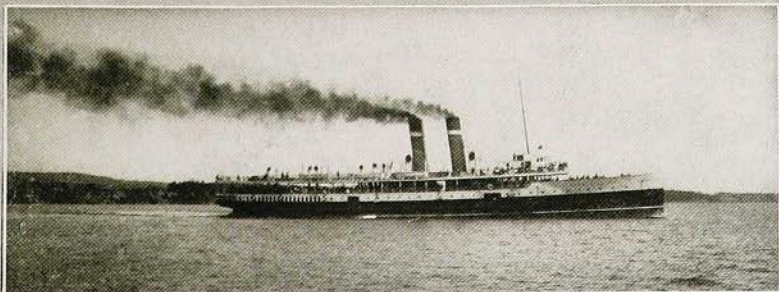
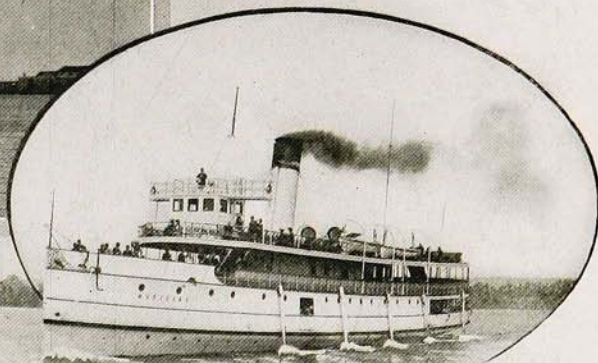
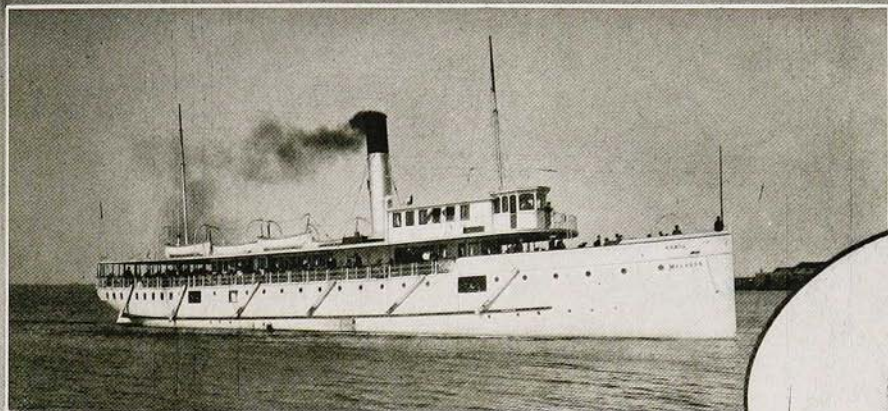


Residence of Wm. Hendrie, Esq.



Hamilton Beach, from Radial R. R. Power House.

Macassa



Turbine S. S. "Turbina"

Modjeska



Royal Hamilton Yacht Club.



Hamilton Beach, South Side from Lighthouse



Hamilton Beach, North side from Lighthouse

Canadian
HISTORY

REF
CIR

SR

REF
CIR