

A Few
FACTS

ABOUT

PEEL
COUNTY

**A County Full of Opportunities
for Anyone Interested in
the Various Branches
of Agriculture**

PEEL COUNTY

WHEN you are looking for a place in which to settle or buy a Farm, do not fail to have a look at Peel County it will not be necessary for you to journey further.

Canada to-day is looked upon as the land of opportunity. It is just developing and it is safe to say that Peel is one of the best, if not the best County, in old Ontario, the pioneer province of the Dominion. Not only to the man interested in the various phases of agriculture, but also to the manufacturer and to the workingman does this county offer the most exceptional advantages. Its fertile soil produces to the very best advantage the most important farm crops common to the whole Dominion. Not in one branch of farming only is this true but in every branch, from the fruit growing in the Lake Shore region to dairying in the vicinity of Brampton; potato culture in Caledon and Albion Townships; stock raising in Chinguacousy Township and enormous possibilities in truck farming in Toronto Township. It will undoubtedly satisfy the farmer who aims at mixed farming as well as the one whose object is to practice an intensive line and thereby reap the greatest possible returns from every acre that he owns.

For the manufacturer Peel County offers the very cheapest of power; the best of transportation facilities and all the raw materials which the farm can produce. Furthermore, it is at the very door of the first market in the Province. What better inducement is necessary. Just think it over. You will find it worth while.

Anyone settling in this County steps into a country already cleared, with churches, schools, railways, rural mail routes, telephone service and all the other advantages that make this life worth while.

FACTS ABOUT PEEL

AND REASONS WHY IT OFFERS SUCH EXCELLENT OPPORTUNITIES

Agriculture is the Keynote of it All

FRUIT GROWING AND TRUCK FARMING

This is most extensive in Toronto Township or what is known better as the Lake Shore Region. Toronto Township including such well known localities as Dixie, Cooksville, Port Credit, Erindale and Clarkson was first settled about 1780. Shortly after that time Port Credit harbor became and was, for many years, the chief shipping place for grain in Peel, Dufferin and a section of Simcoe counties. The rapid growth of the city of Toronto however, soon led the farmers of this township into another branch of farming, namely, fruit growing. Being favored with a light, sandy soil, essentially a soil for tree and bush fruits and having a climate tempered by its proximity to Lake Ontario, this district has become a well known fruit centre. Its nearness to Toronto and hence a first class market, is something that further enhances its value in this respect. The majority of the farmers team their produce direct to to the city market and in this way are enabled to sell directly to the consumer. During the past season, one man had a gross output of \$10,000 from a small farm, orchard and garden, of 27 acres. Numerous instances of a similar nature could easily be cited. If interested in fruit or the growing of garden produce you cannot possibly do any better than Toronto Township.

DAIRYING

It is for this industry that Peel County is particularly noted and a great deal of its present prosperity is due largely to an extensive development in this line. Chinguacousy Township, of which the town of Brampton is the hub, is really the home of this money making proposi-

tion. The farmers in this township, similarly to those in Toronto township, started out first of all to raise grain only, but of recent years, recognizing the great opportunities awaiting them in the milk and butter trade they have gone extensively into this industry. Although only a small county, it ships more dairy products annually into the city of Toronto than any other county in the province. Grade Durhams and Holsteins are found on the majority of the farms but the Jersey is fast gaining a strong foothold in the county as one of the best dairy breed. There are at the present time about 450 registered Jerseys. Price's Dairy at Erindale with its 400 cows is also a well known dairy farm. Enough said concerning the dairy cow, it speaks for itself.

POTATO GROWING

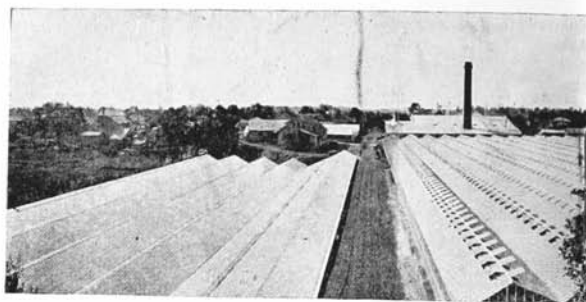
This is something that should appeal to those of our citizens who have any Irish blood coursing through their veins. Furthermore, if you wish to see or if you have any desire to start something in the potato line it will pay you to take a trip through Caledon and Albion townships. The soil being of a sandy nature is peculiarly suited to the growing of potatoes and there is no farmer who does not grow at least two or three acres. A great many farmers have lately gone into it on more or less of a commercial basis, raising ten or twelve acres and to the man who has any desire to launch out thus, the opportunities are practically unlimited. With a little co-operation and a fair amount of public spirit these two districts can be made the banner potato localities of the province. To give a concrete instance of the present status of this industry, it can safely be said that 50 carload lots are shipped annually from Caledon, Caledon East and Palgrave. But this is nothing to what it might be.

LIVE STOCK

This phase of agriculture with its several classes is one that is practised more or less, depending upon the community, throughout the whole county. No matter where you go you find good stock, particularly might this be said with regard to Clydesdale horses. A visit to any of the county fairs will serve to clearly demonstrate this fact. Several of the most prominent horse importers reside in the county and thus a large number of the horses are registered. A similar statement can be made about swine and dairy cattle. Yorkshire and Berkshire swine predominate, the late Mr. Featherstone of Streetsville having gained Dominion wide fame with the former, while the famous champion Jersey herd of B. H. Bull and Son needs no second mention. The predominance of good live stock everywhere is easily explained by the good stretches of grain farming land that can be seen everywhere.

BEE KEEPING

One of the most remunerative occupations that a person can work at, bee-keeping occupies a foremost place in Peel County agriculture. It was about the year 1882 that any attention was first given to it, and during that year it is estimated that the output totalled about 30,000 pounds. A steady increase has been going on every year since then until



THE DALE ESTATE GREENHOUSES, B

this year the output easily totals one quarter of a million. Going hand in hand with mixed farming, poultry raising and fruit growing, it has kept stride with all of these in their rapid development. Honey produced by bee-keepers in Peel County is of the very best quality; it always finds a ready market and always takes a top place when shown at any of the national shows and exhibitions. There is a County Bee Keepers Association which attends to the wants of its members as a collective body. All enterprising bee men belong to it.

In conjunction with this we have the raising of clover seeds, particularly alsike. This is no small item on a great many farms and of course it is made all the more valuable by the presence of a number of apiaries in the community.

POULTRY RAISING

Peel's temperate climate, its mild winters and its easy access to the city of Toronto with its large population makes poultry raising as well as winter egg production exceedingly profitable. No farm is without its farm flock and many have lately gone into the work much more extensively. There is no end of room for it yet however as the demand for a good supply of guaranteed fresh eggs far exceeds the supply.

FLOWERS

Brampton is rightly named the Flower Town. The Dale Estate, now covering about twenty acres of ground, is the greatest commercial greenhouse producing cut flowers on the American continent. Besides this, several smaller greenhouses in the town do a flourishing trade. Their cut flowers are sent broadcast through the Dominion and to many points in the United States.



BRAMPTON—20 ARCAS UNDER GLASS

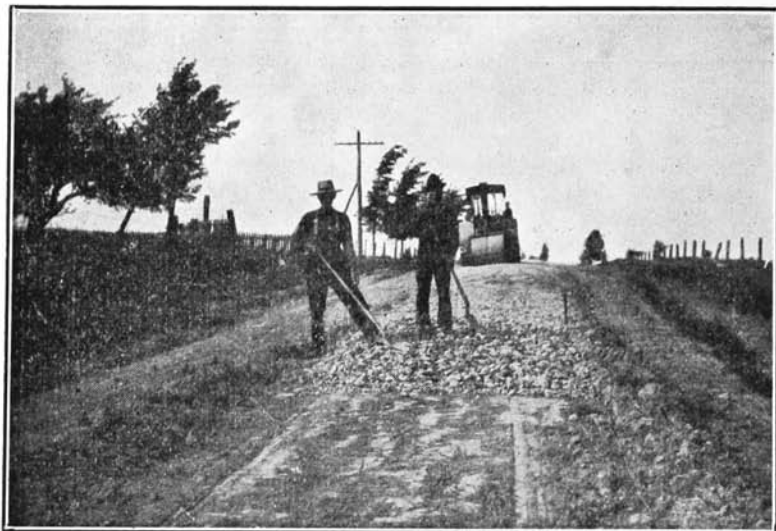


GOOD TRANSPORTATION FACILITIES

This possibly is the backbone of all Peel's agricultural prosperity as convenience and quickness to markets is of the most vital importance to any county. Within short distance and easy haul of Toronto, the best market, there is no excuse for the perishable products of the farm being wasted. For instance, in the southern section it is quite possible to team a load of produce into the city in the morning, have it sold, and be back home by 4 o'clock in the afternoon. Is it any wonder that some men realize \$300 and \$400 per acre from their small truck farms.

Five trunk lines—two Grand Trunk running across the County and three Canadian Pacific running lengthwise, serve to place every section in close touch with the one great centre. The radial line running along the Lake Shore Road serves to accommodate Toronto business men who are rapidly taking up their residence in the rural districts in an endeavor to get away from the everlasting clang and bustle of city life. Mackenzie and Mann's New Canadian Northern line in the course of construction, will prove a great asset when completed, not only as a matter of convenience to the public but also as a means of increasing farm values all along the line. All told Peel has 125 miles of railroad which speaks well for a county consisting of five townships.

Next to the railroads, there is the good roads system to which the county council of Peel is now paying a great deal of attention. Miles and miles of the very best macadamized road, are being added every season and heavy clay and sandy roads hitherto impassable in the bad seasons of the year, are now rendered the very best. One road of this nature known as the Centre Road traverses the length of the County running directly through the town of Brampton. It communicates with Orangeville at the western end and joins the Dundas Road, which leads direct to the city of Toronto, at Cooksville. Besides these two there are numerous shorter strips of such road everywhere in the county, which are being added to annually. This is undoubtedly one of the county's greatest assets.



GOOD ROAD-MAKING IN PEEL

FREE MAIL DELIVERY

The county is well supplied with post offices and the rural mail service is being added to each year. At the present time 24 rural mail routes are in active operation throughout the country districts and several more are being developed. The final aim is to have the whole county supplied in this manner.

RURAL TELEPHONE SERVICE

The Telephone in practically every farming district has passed the "talked of" stage and is now a reality. Almost every farmer can now talk to his neighbors or to merchants in the nearest market town without stirring from his own home. It is a decided asset both socially and financially. Socially more from the women's standpoint in the farm home and financially because of the close tab that the farmer is able to keep upon the local market. It is only a matter of time before those sections (and they are few) not already enjoying telephone service, will have the telephone installed.

HYDRO ELECTRIC

Although this is a comparatively a new venture as far as the farming communities are concerned, it is one that is taking a rapid hold upon the farmers of Peel County. This is particularly true of those living in the Lake Shore Region of Toronto Township when the Hydro Electric transmission lines run along the main roads. Farm homes are lighted and the "white coal" is in many instances used as a power to run farm machinery. Feeling runs high regarding this electric power, however, and it is already being felt in the vicinity of Brampton and other sections.

FARMERS' ORGANIZATIONS

The Farmers' and Women's Institute Organizations in Peel County are as strong as any in the province and they are doing excellent work in their different branches. The Farmers' Institutes are encouraging the latest ideas in farming and securing experts to deliver addresses on various farm topics, while the Women's Institutes are doing much to better the social and economic condition of the women on the farm. Farmers' Clubs are not very numerous as yet but several districts are planning to organize this season.

PICTURESQUE SPOTS IN PEEL

All lovers of nature have surely heard of the Credit Forks, one of prettiest spots in old Ontario. From the time that the buds begin to burst in the spring until autumn tinges all the trees and other foliage with its numerous tints, the Credit Valley not only in the vicinity of Credit Forks but all through the county, is a sight to behold. Not only is this rolling Credit and Caledon district noted for its scenery but it is also famous for its abundant supply of cold, clear sparkling, springs that bubble from every hillside. All the streams abound more or less with that gamey little fish, the trout and already several fish hatcheries have been established. A great number of people have already found out the value of the Caledon country as a healthful summer resort and several summer homes are now in the course of construction. The Caledon Mountain Club is another organization that is the direct outcome of its healthful and scenic value.

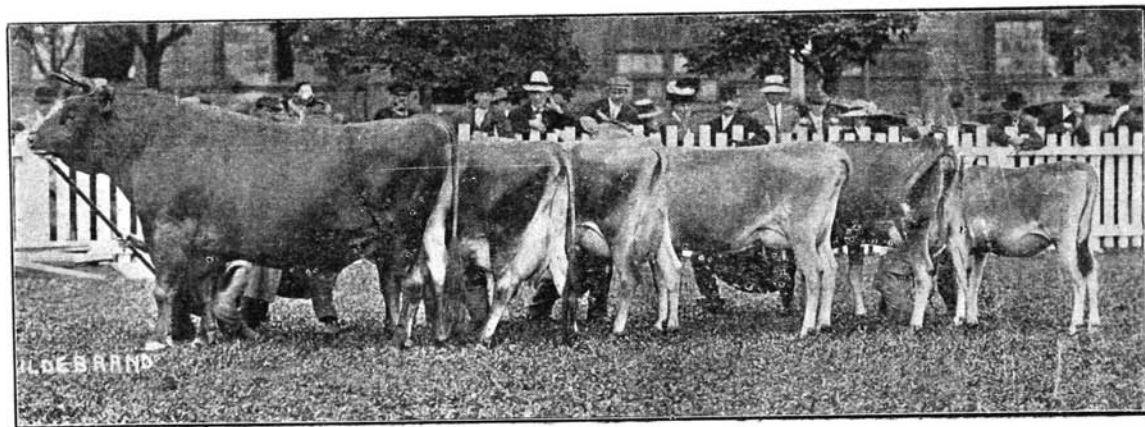
INDUSTRIAL PROGRESS

Not only for the farmer but for the manufacturer does Peel County offer unlimited opportunities. The lumberman is practically the only man who is barred, as the County has long ago been largely cleared of its best timber. At the present time 90 per cent. of the land is cleared and under cultivation which fact in itself is enough to discourage the timber merchant.

Great strides have been made in the brick industry during the past year or two. Five new brick making plants have been started during the past summer on the clay belt that skirts along the Caledon Mountain from Palgrave to Terra Cotta. The very best of brick is being turned out from them and their supply of material is almost inexhaustable. Concerns of a similar nature are operating successfully at Cooksville and Port Credit.

Possibly no other town in Ontario offers such excellent opportunities in the various manufacturing lines as does the town of Brampton. With its cheap town sites and Hydro-Electric system, it is a town that cannot be overlooked. At the present time it boasts of two shoe factories; the foundry of the Pease Furnace Co.; the Hough Lithographing Co.; the Copeland-Chatterson Co., and recently the Massey-Harris Co. has purchased 200 acres on the outskirts of the town with the intention of building thereon. Woollen mills are also operating in the villages of Huttonville, Bolton, Inglewood and Alton.

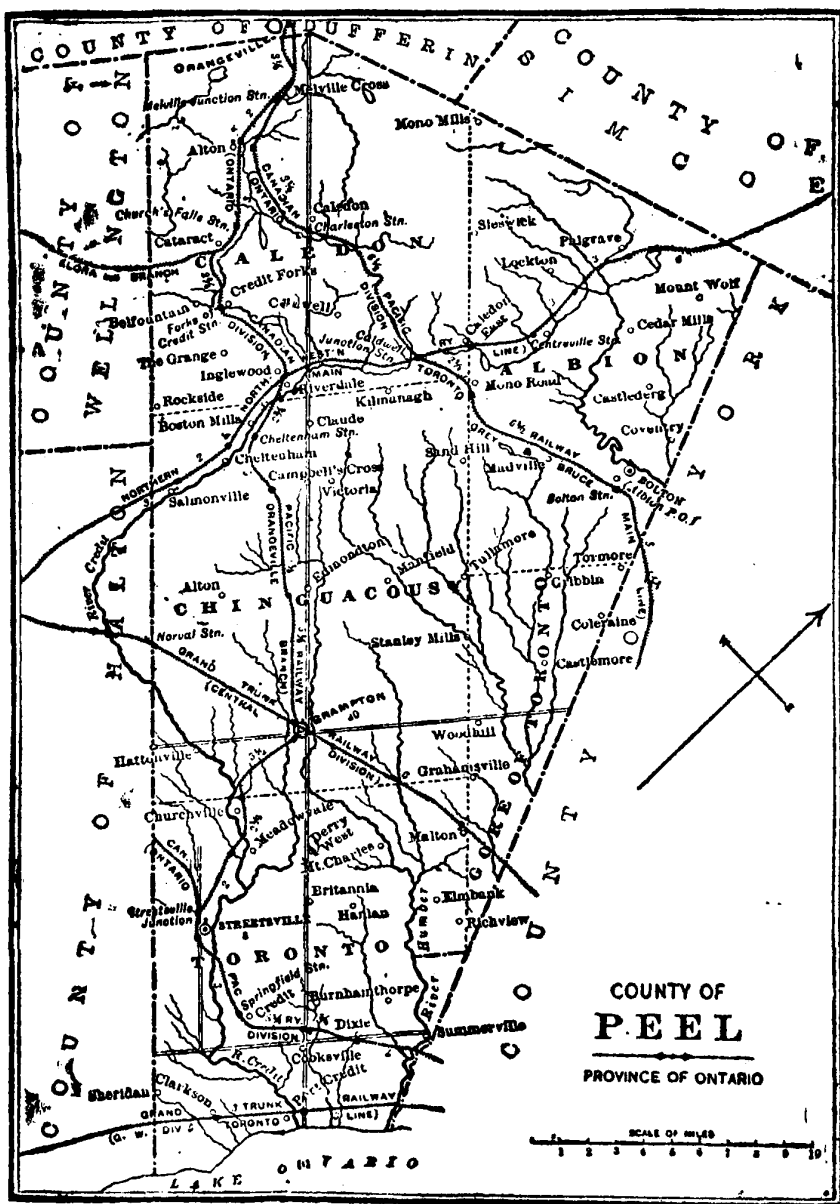
Peel County is rapidly coming to the front. Just watch it boom.



A FEW OF THE GOOD CATTLE RAISED IN PEEL COUNTY

PEEL COUNTY THE LAND FLOWING WITH MILK AND HONEY

Any enquiries with regard to the county will be gladly answered by the Department of Agriculture, Brampton.



THE CONSERVATOR PRINT

BRAMPTON

