

Belleville

PICTURE COLLECTION

917.13585

B.245

1906

BELLEVILLE

THE BEAUTIFUL CITY

CHARMINGLY LOCATED ON THE RIVER MOIRA
AT ITS CONFLUENCE WITH THE BAY OF QUINTE

A DELIGHTFUL RESIDENTIAL CITY

INCORPORATED 1878

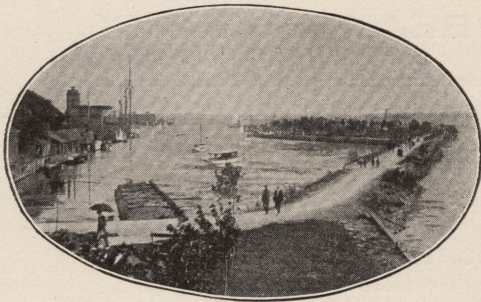
POPULATION INCLUDING SUBURBS---15,000

COUNTY SEAT OF HASTINGS

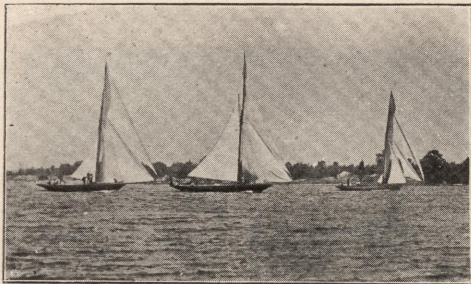
PICTURE COLLECTION



20

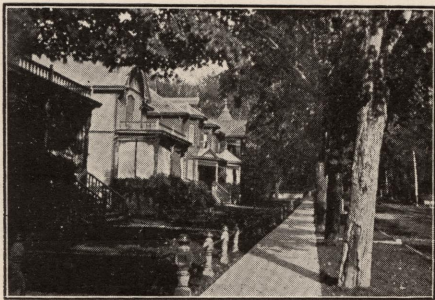


Belleville Harbor and Queen Victoria Park.

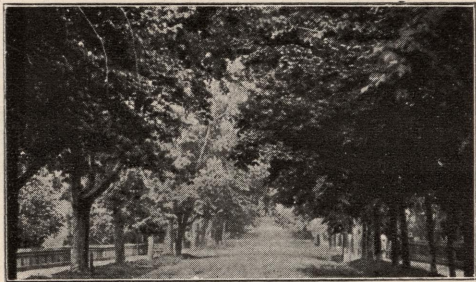


Bay of Quinte at Belleville.

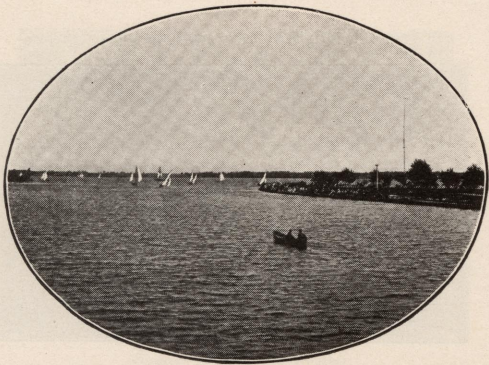
A Popular Resort for Yachtsmen.



Street Scene, Belleville.



Street Scene, Belleville.



In Belleville Harbor.

CHIEF ADVANTAGES OF BELLEVILLE.



HEALTHFUL LOCALITY.

LOW TAXATION.

EDUCATIONAL FACILITIES.

FINE RESIDENCES.

SHADED STREETS.

EXCEPTIONAL MARKET.

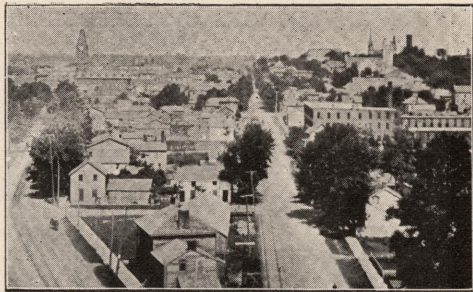
FINE STORES.

BOATING.

FISHING.

YACHTING.

~ SPLENDID SURROUNDING FARMING COUNTRY.



South Belleville—at Docks.

City Hall Tower to the left in the distance.



Belleville Welcomes Visitors.

IMPORTANT FEATURES OF BELLEVILLE.



TWO DAILY NEWSPAPERS. FINE OPERA HOUSE.

Y. M. C. A. HOSPITAL. ISOLATION HOSPITAL.

CITY HOME. COUNTY HOME.

QUEEN VICTORIA PARK. CORBY PARK.

WEST SIDE PARK.

STREETS LIGHTED BY ELECTRICITY AND GAS.

MILES OF GRANOLITHIC WALKS.

IMPORTANT FEATURES OF BELLEVILLE.



GOVERNMENT ASSAY OFFICE.

INSTITUTION FOR THE DEAF AND DUMB.

PUBLIC AND HIGH SCHOOLS.

ALBERT COLLEGE.

ST. AGNES SCHOOL.

ONTARIO BUSINESS COLLEGE.

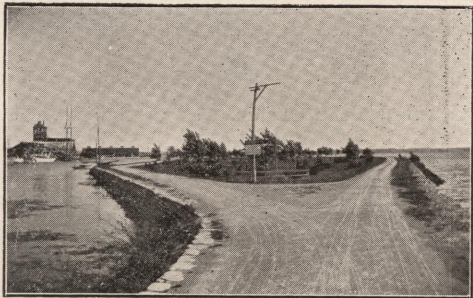
BELLEVILLE BUSINESS COLLEGE.

PUBLIC LIBRARY.

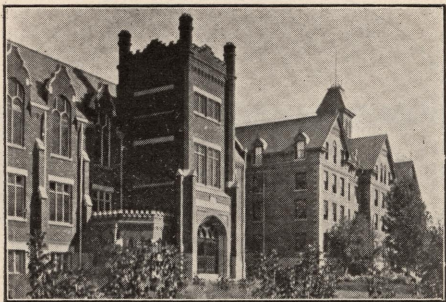
MUNICIPAL WATER WORKS.

EXCELLENT FIRE SERVICE.

MUNICIPAL GAS WORKS.



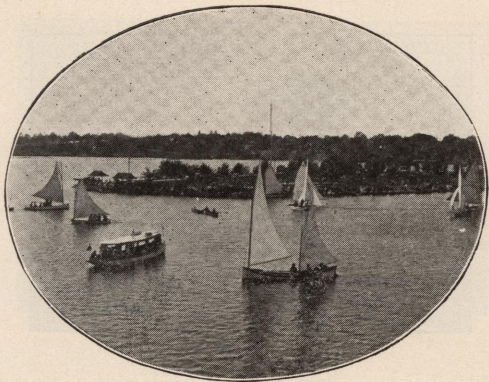
Queen Victoria Park Approach.



ALBERT COLLEGE.

Established 1857.

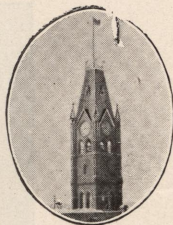
Many of Canada's Famous Men •
received their education here.



In Belleville Harbor.

The Belleville Market is not excelled in Ontario.

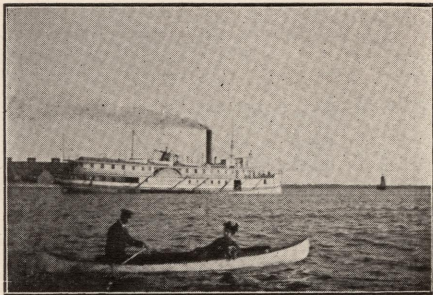
The supplies of poultry, eggs, butter, meats, fruits, honey, garden produce, etc., are most abundant, and prices are more moderate than at any other point in Ontario.



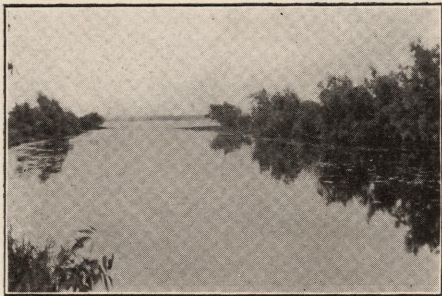
City Hall Tower.

Average taxation of Cities in Ontario per head—\$12.29.

In Belleville it is \$9.65.



In Belleville Harbor.



A Favorite Picnic Spot.
Opposite Belleville on the Bay of Quinte.



Street Scene, Belleville.

Almost the whole residential
part of the City is a park.



Belleville has Fifteen Churches.

MINERALS IN HASTINGS COUNTY.

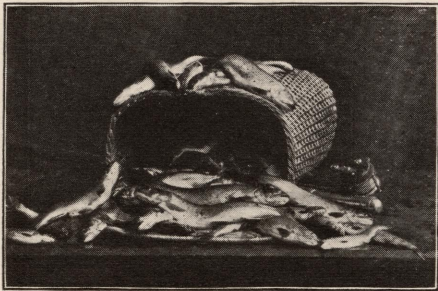
(Of which Belleville is the County Town.)

Iron.	Gold.	Asbestos.	Lithographic Stone.
Corundum.		Arsenic.	Lead.

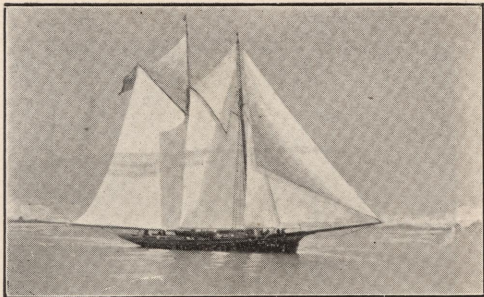


Pitch your tent here.

There are many delightful camping spots near the city.



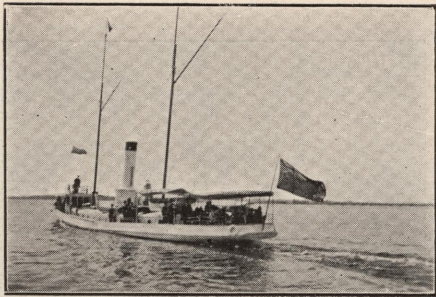
Speckled Trout caught near Belleville.



The "Oriole."

Many Fine Craft visit Belleville.

The yacht Atlanta, built at Belleville, contested
for the American cup at New York in 1881.



A Belleville Party off for a Run
down the Bay.

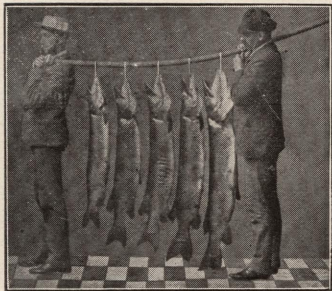
The calm waters of the Bay afford safe
and pleasant outings for small craft.



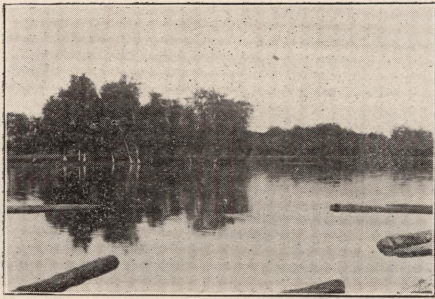
Maskinonge caught at Belleville.



A Belleville Quintette and their catch.



The Maskinonge Fishing is good.



A Popular Camping Ground on the Bay
near Belleville.



At Queen Victoria Park.

Superior accommodation for visiting craft.
Five minutes from Post Office and Hotel Quinte.
Electric lighting all night.

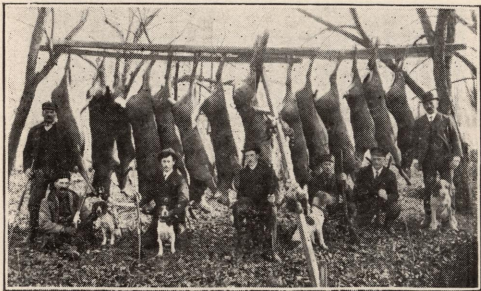
BELLEVILLE INDUSTRIES.

Lock Works
Shirt Factories (2)
Flour Mills (2)
Foundries (2)
Rolling Mills
Brewery
Evaporator
Marble Works (2)
Mattress Factory
Pork Factory
Canning Factory
Boat Works
Woollen Mills

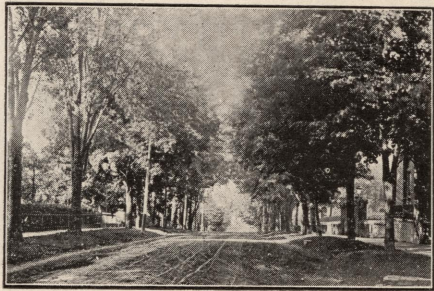
Cement Works (2)
Carriage Works (3)
Paper Mills
Machine Works
Furniture Factories (2)
Distillery
Vinegar Works
Stone Quarries
Brick Works
Tannery
Tinware and Lanterns
Planing Mills (2)



The Fall Duck Shooting on the Bay
at Belleville is good.



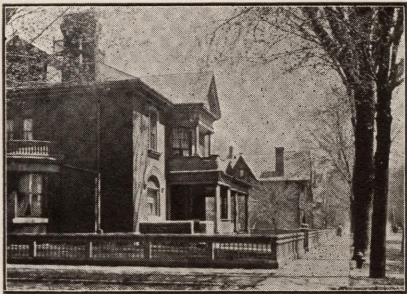
Splendid Deer Country 50 miles north.
A Belleville Party.



Street Scene, Belleville.



Street Scene, Belleville.



Street Scene, Belleville.

CHEESE INDUSTRY AT BELLEVILLE.

STATISTICS FOR 1905.

No. of Boxes sold on Board, 92,000 (8,400,000 lbs.) Value, \$850,425.

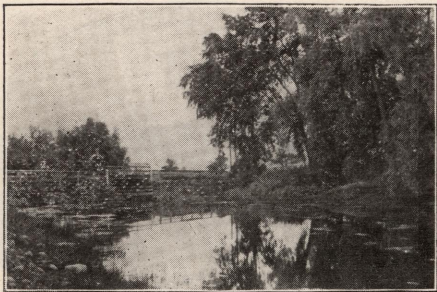
No. of Boxes made in Hastings County, 158,000 (13,746,000 lbs)
Value, \$1,460,512.50.

No of Factories in Hastings County, 100.

Average price on Belleville Board, 1905, 10½c.



Beautiful Drives at Belleville.

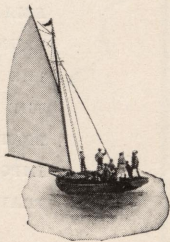


Beautiful Drives at Belleville.



In Belleville Harbor.

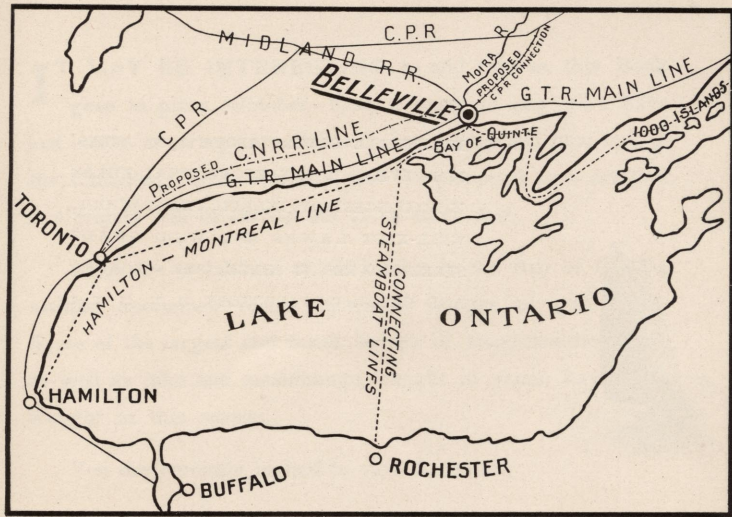
BELLEVILLE IS AN IDEAL
CONVENTION CITY. THE
HOTEL ACCOMMODATION
IS UNSURPASSED :: ::

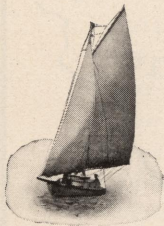




One of the Finest.

BELLEVILLE IS ON THE MAIN LINE OF THE GRAND TRUNK RAILWAY AND IS THE TERMINAL POINT OF THE MIDLAND DIVISION, ALSO CONNECTING WITH THE CANADIAN PACIFIC RAILWAY. SEVERAL STEAM-BOAT LINES GIVE REGULAR CONNECTIONS WITH ALL IMPORTANT AMERICAN AND CANADIAN POINTS. TRAVELLERS FIND THIS A GREAT CONVENIENCE. ❁





BELLEVILLE COVERS ABOUT 1700 ACRES.
IT IS EVIDENT, THEREFORE, THAT THERE
IS NO CONGESTION, INDEED, THE SPACIOUS,
WELL-KEPT LAWNS AND WIDE SHADY
STREETS ARE AT ONCE THE WONDER
AND DELIGHT OF VISITORS :: :: :: : :

IT MAY BE INTERESTING to add that as this Book goes to press (October, 1906) a party of engineers have just made a survey into Belleville for a proposed new line of the Canadian Pacific Railway, and the prospects now are that this project will be carried out at an early date.

Since the prohibition of net fishing in the Bay of Quinte, visiting sportsmen report increased catches of game fish. Some of the largest and finest strings of small-mouthed bass, as well as pike and maskinonge, caught in years, have been brought in this season.

You are cordially invited to visit Belleville.

PICTURE COLLECTION

BELLEVILLE

PICTURE COLLECTION

**INTELLIGENCER
PRINT**