



PICTURESQUE
PORT ARTHUR

Picturesque Port Arthur

ENGRAVED AND PRINTED BY
The James Bayne Co. Grand Rapids
Michigan

Picturesque PORT ARTHUR

*Over Sixty Illustrations, Portraying the
more Important Points in and
around Port Arthur*



Published by The James Bayne Company, Grand Rapids, Michigan, U. S. A.



THE city of Port Arthur, with a present population of 14,000, occupies a commanding position at the head of Canadian lake navigation. The present prosperity and growth is due to several causes, among them being the location of the Canadian Northern Railway Lake Superior terminals here. We are the youngest city in Canada and are very proud of our position as the pioneer in municipal ownership and operation of our utilities, among them being our electric street railway with over nine miles of track. We own and operate our electric lighting system and develop our own power for it and for our street railway and waterworks pumping plant, and are able to furnish power to local industries, the cost to users being \$20.00 per h. p. per annum for a 24-hour service. Our domestic light costs the consumer less than in any city in Canada. Our municipal telephone system has at present 1,000 domestic and business 'phones, which cost per year \$12.00 and \$24.00 respectively. Arrangements with the city of Fort William give subscribers an exchange of over 2,000 'phones, and this number will be increased during the present year to fully 2,400, as soon as new switch-boards, which are being installed, are completed. The city also owns and operates its own waterworks system, which is being rapidly extended.

These advantages and many others should, and do, make Port Arthur a very desirable place of residence, as all our franchises are yielding a handsome surplus after providing for sinking fund and repairs, which surplus is applied to the reduction of taxation. In addition to these advantages the city has acquired and set aside a large tract of land for the location of manufacturing industries, which are sure to center here, as they will have the markets of

the great and growing west well within their grasp. There is not the least doubt that within 20 years the greater portion of the population of Canada will be west of the great lakes, so that from a manufacturing point of view this young city holds the key for those who are astute enough to take advantage of the situation and get on the ground while the conditions are most favorable for securing a foothold.

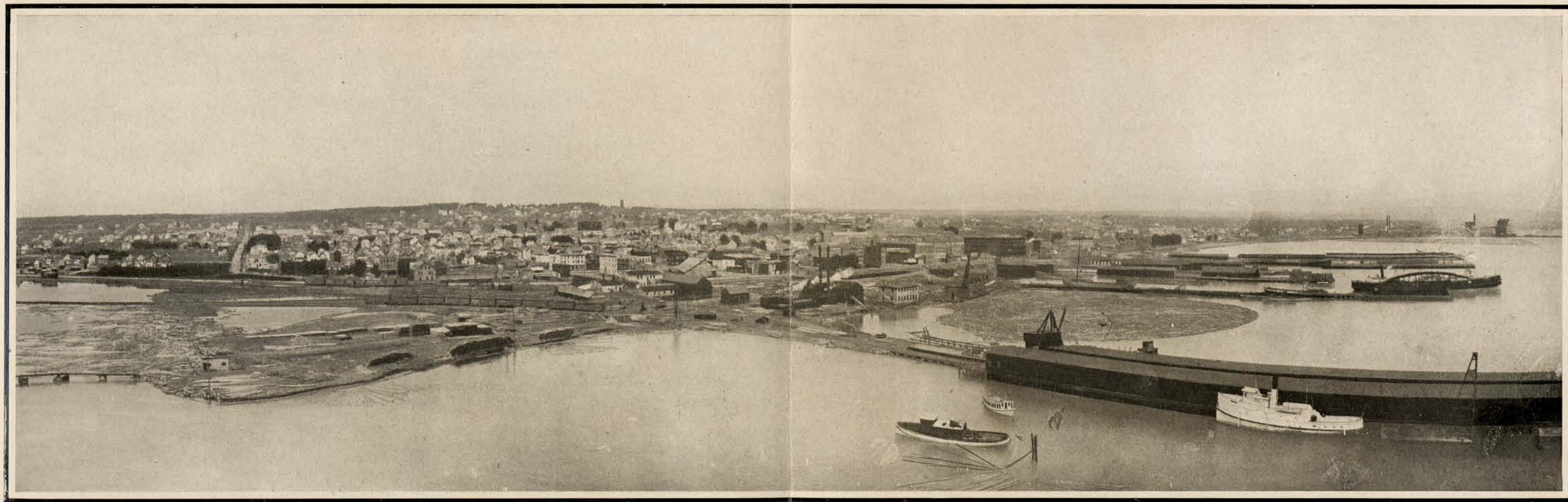
Among the manufacturing industries already established here are the Pigeon River Lumber Company and Vigars-Shear Company with an annual cut of 25,000,000 feet, which finds a ready market in the west. The handling of grain at this point is too well known to need elaborate comment. The British American Elevator Company handled during 1906-07 about 20,000,000 bushels of grain. The King Cleaning Elevator, for the special treatment of damaged and unmarketable grain, adds very materially to the total. The Canadian Northern Coal & Ore Dock Company has built at this point the most modern coal handling plant in Canada. The Atikokan Iron Company is another industry which will be of very material benefit to the city and district. Their blast furnace and coking plant has been erected during the past year at a cost of \$1,000,000, the capacity of the furnace being 200 tons of pig iron daily.

This bald statement of facts can be substantiated by figures, which are more convincing than anything else. The City Clerk and Treasurer, Mr. James McTeigue, will be glad to furnish further information to any one interested.



Forde Photo

Post Office and Custom Building, Port Arthur



Forde Photo

Panoramic View of Port Arthur from the Water Front



Forde Photo

Panoramic View of Port Arthur, looking towards Lake Superior

Roman Catholic Separate School, Port Arthur



Central Public School, Port Arthur



Forde Photo

High School, Port Arthur

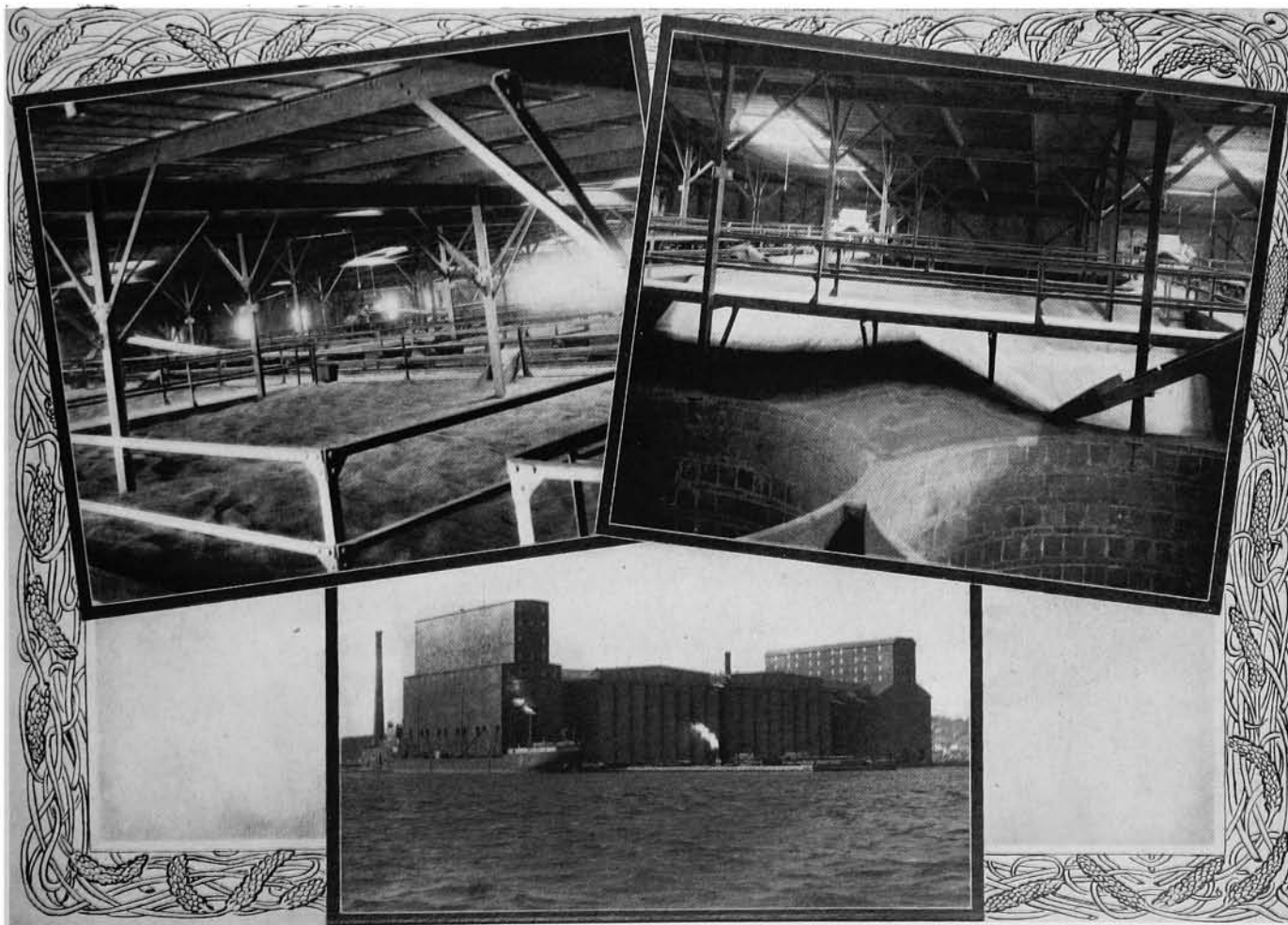


Forde Photo

Cumberland St. looking South from Arthur St., Port Arthur

Interior of Elevator, Loaded

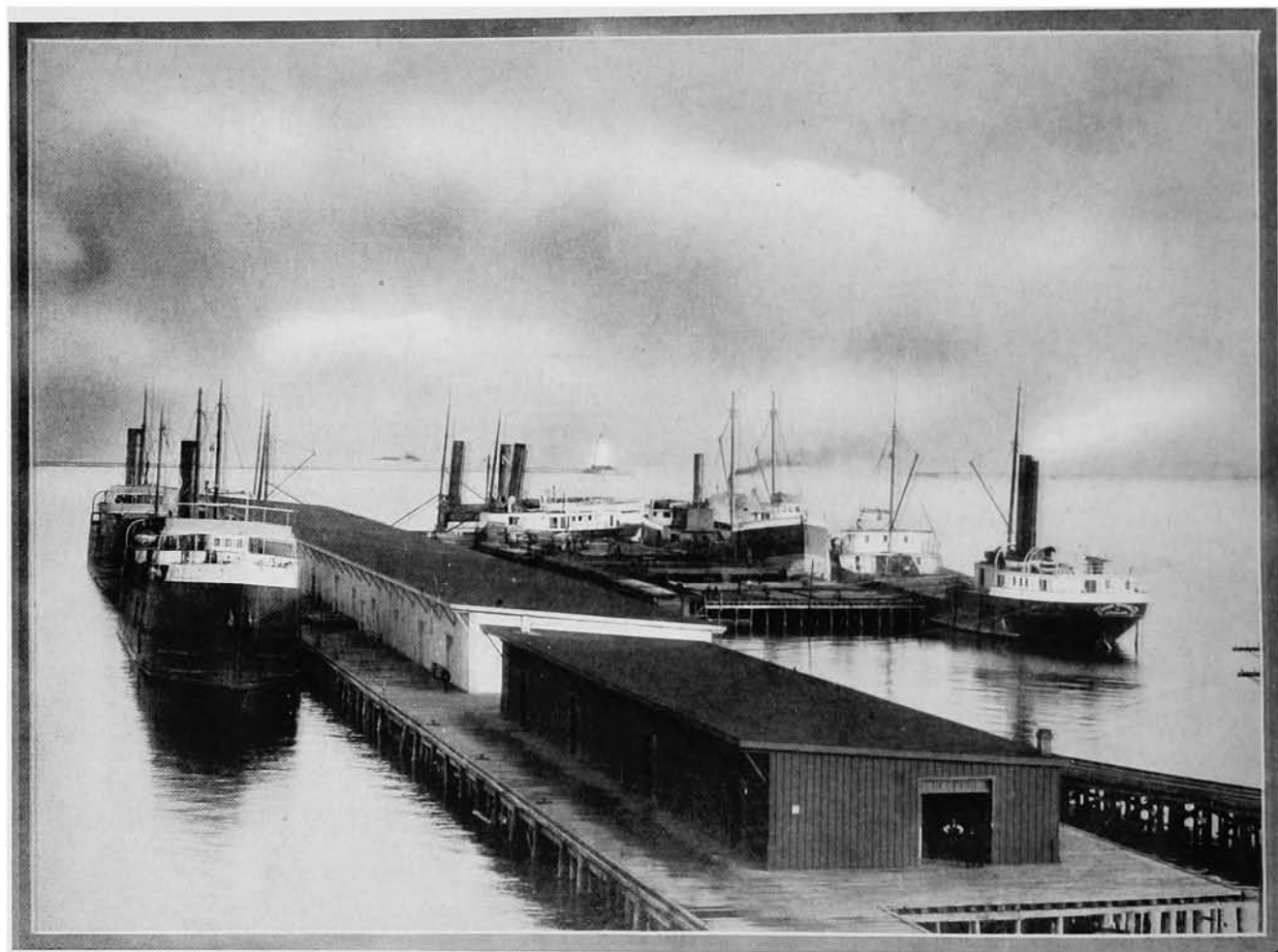
Interior of Elevator, Partly Filled



Forde Photo

The British American Elevator

The largest elevator in the world, storage capacity 7,500,000 bushels, Port Arthur.

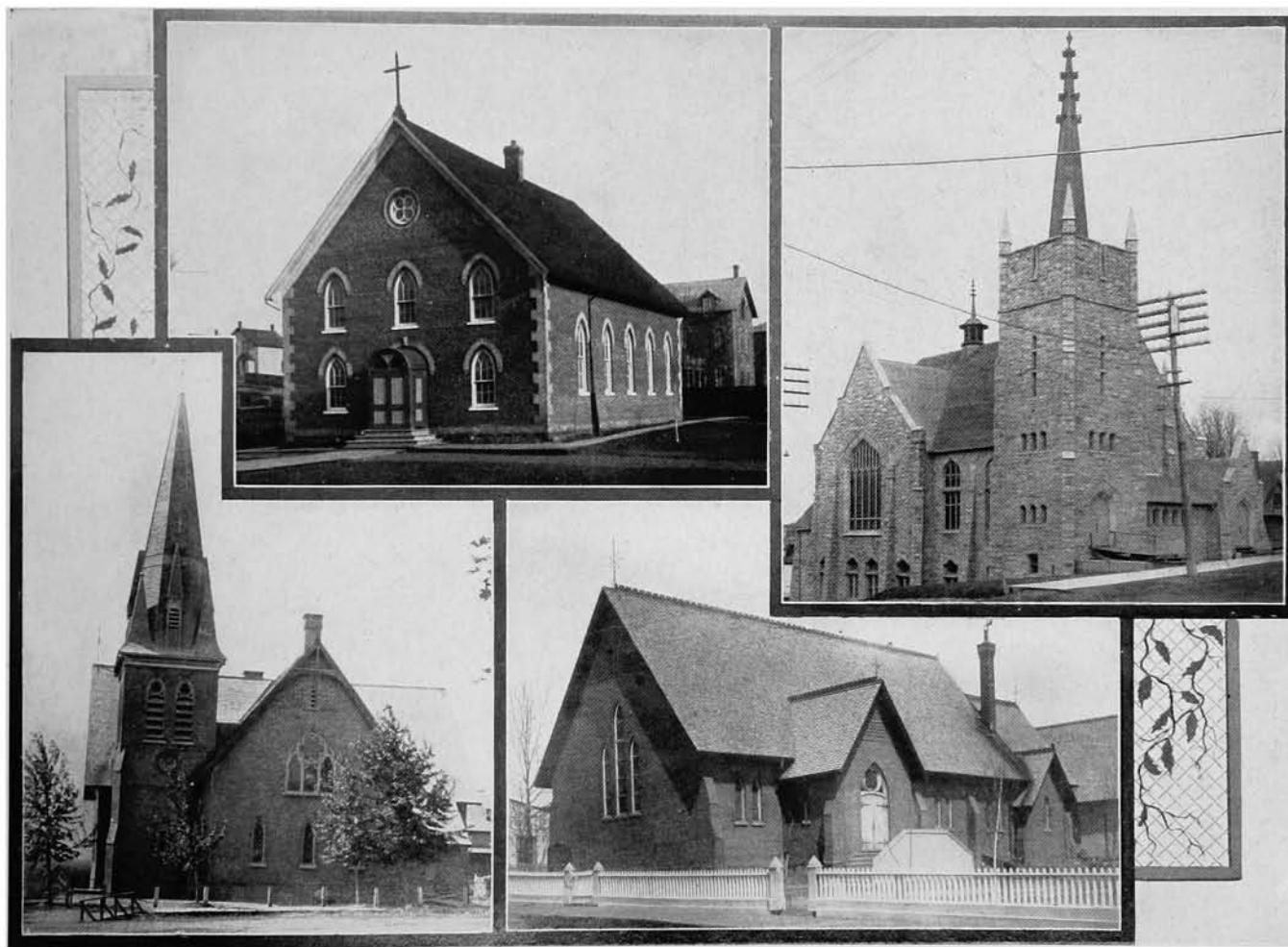


Forde Photo

Around the Wharves, Port Arthur Harbor

Roman Catholic Church, Port Arthur
Being replaced with a larger edifice this year, 1907.

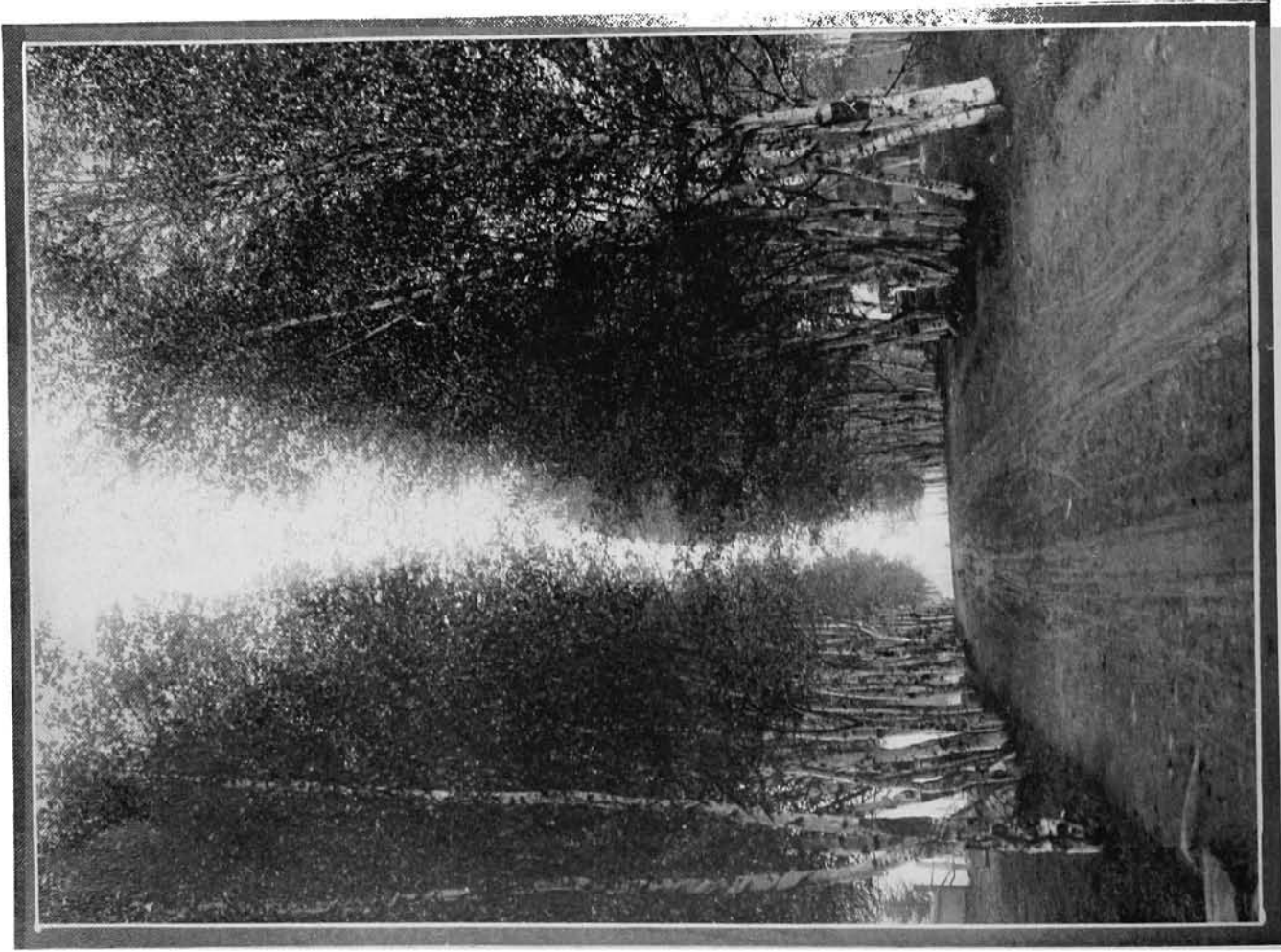
Methodist Church, Port Arthur



Forde Photo

Presbyterian Church, Port Arthur

Church of England, Port Arthur



Forde Photo

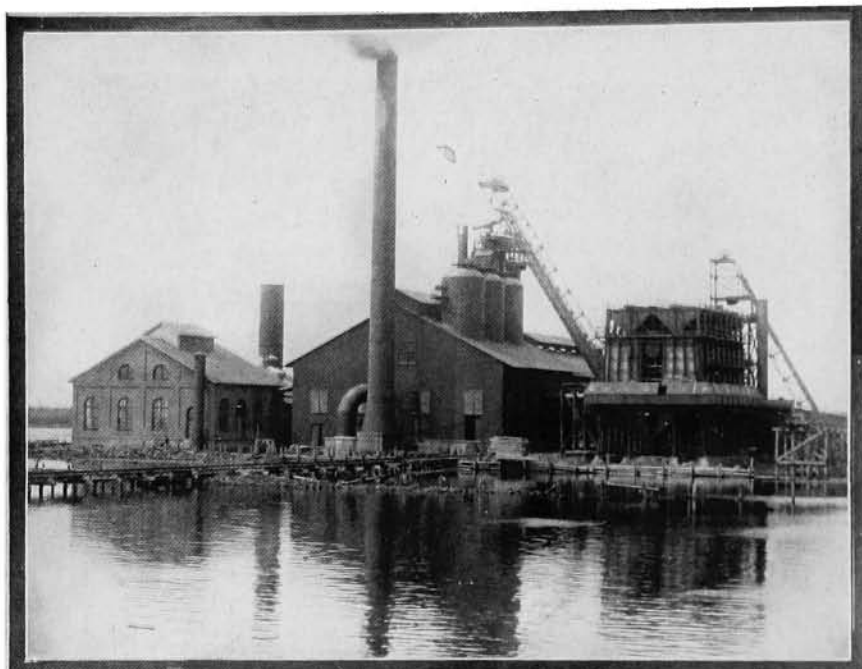
Dawson Avenue (Summer), Port Arthur



Ford Photo

Dawson Avenue (Winter), Port Arthur

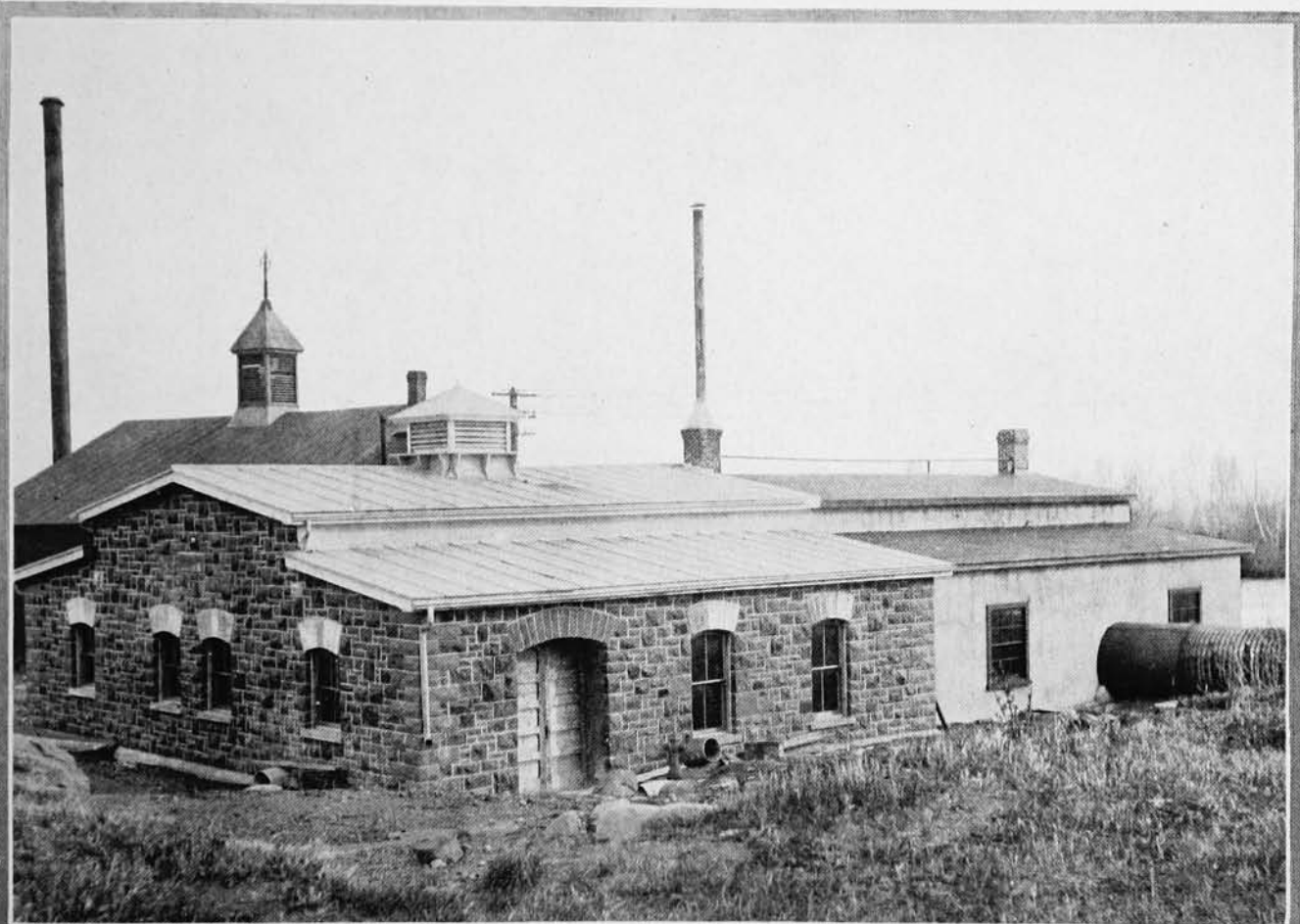
Blast Furnace, Port Arthur—Roasting Ovens, Hot Air Blast
Stoves and Engine House



Forde Photo

Current River Cascades

Source of power for Port Arthur's utilities; a fall of 82 ft. from the dam to the lake level.



Forde Photo

Power House, Port Arthur

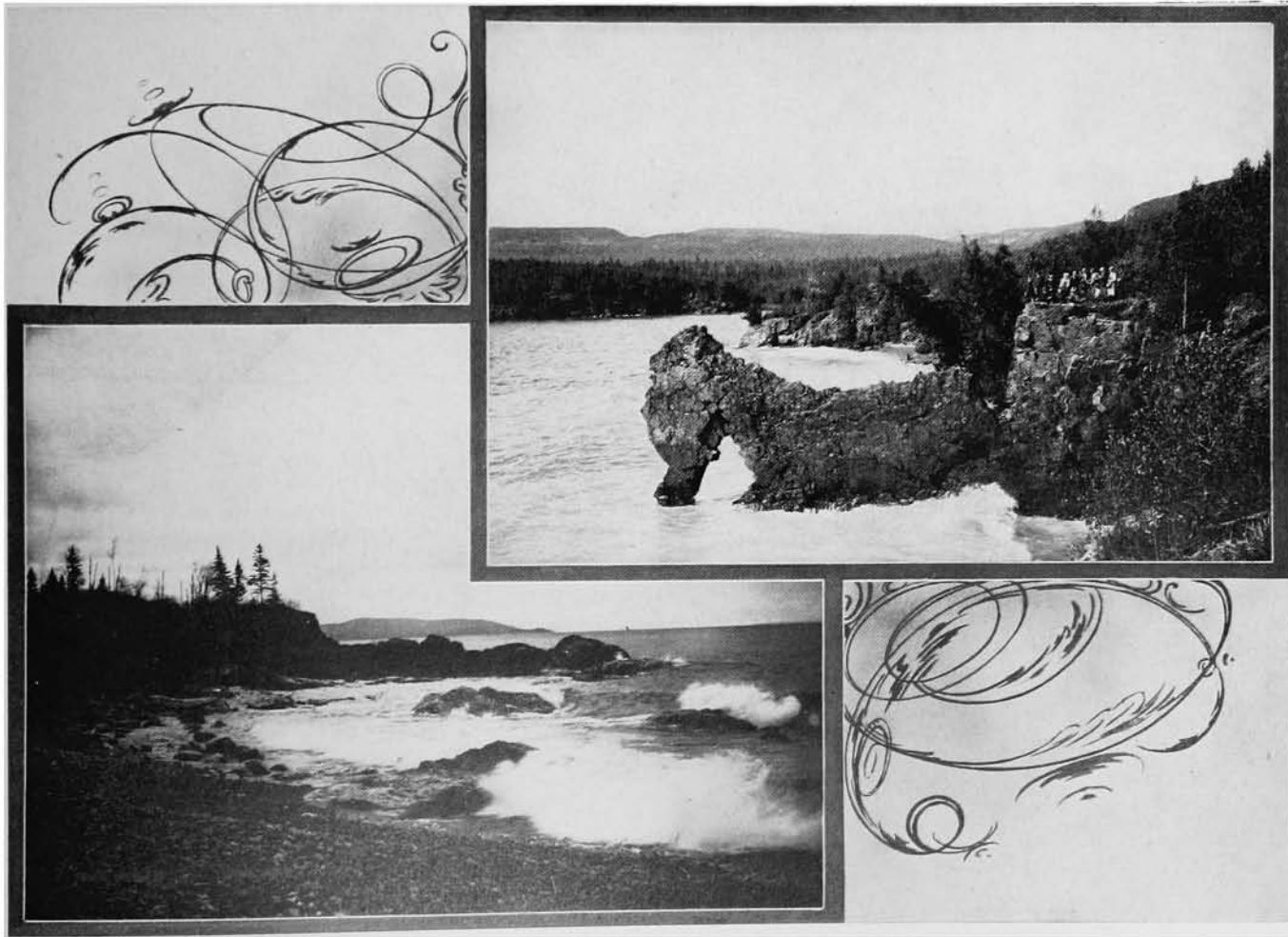
Electric Lighting, Street Railway and Waterworks extensions are being made, which will give another 1200 horse power.



Forde Photo

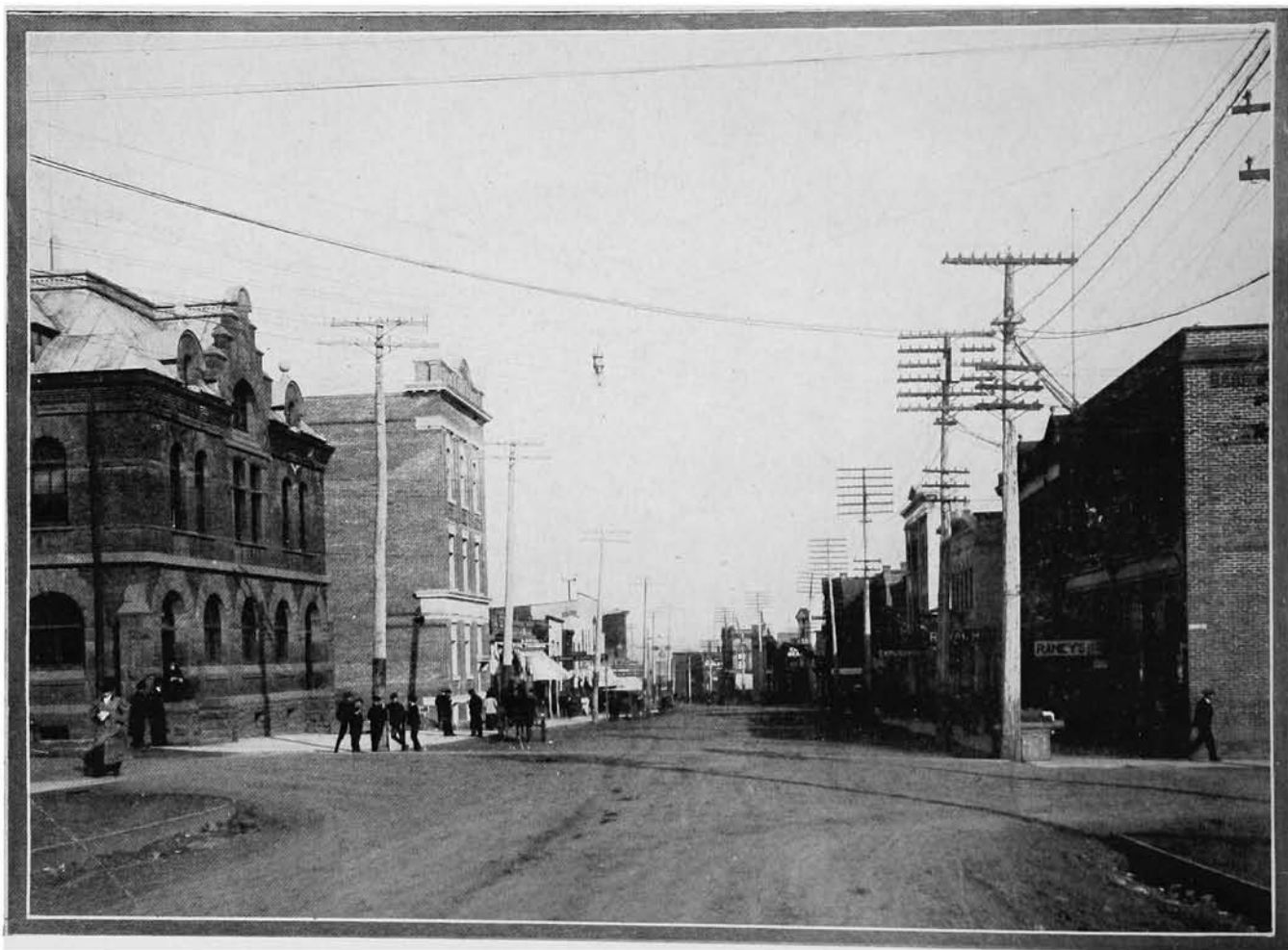
St. Joseph's General Hospital, Port Arthur

Lion's Head, Silver Islet, near Port Arthur



Forde Photo

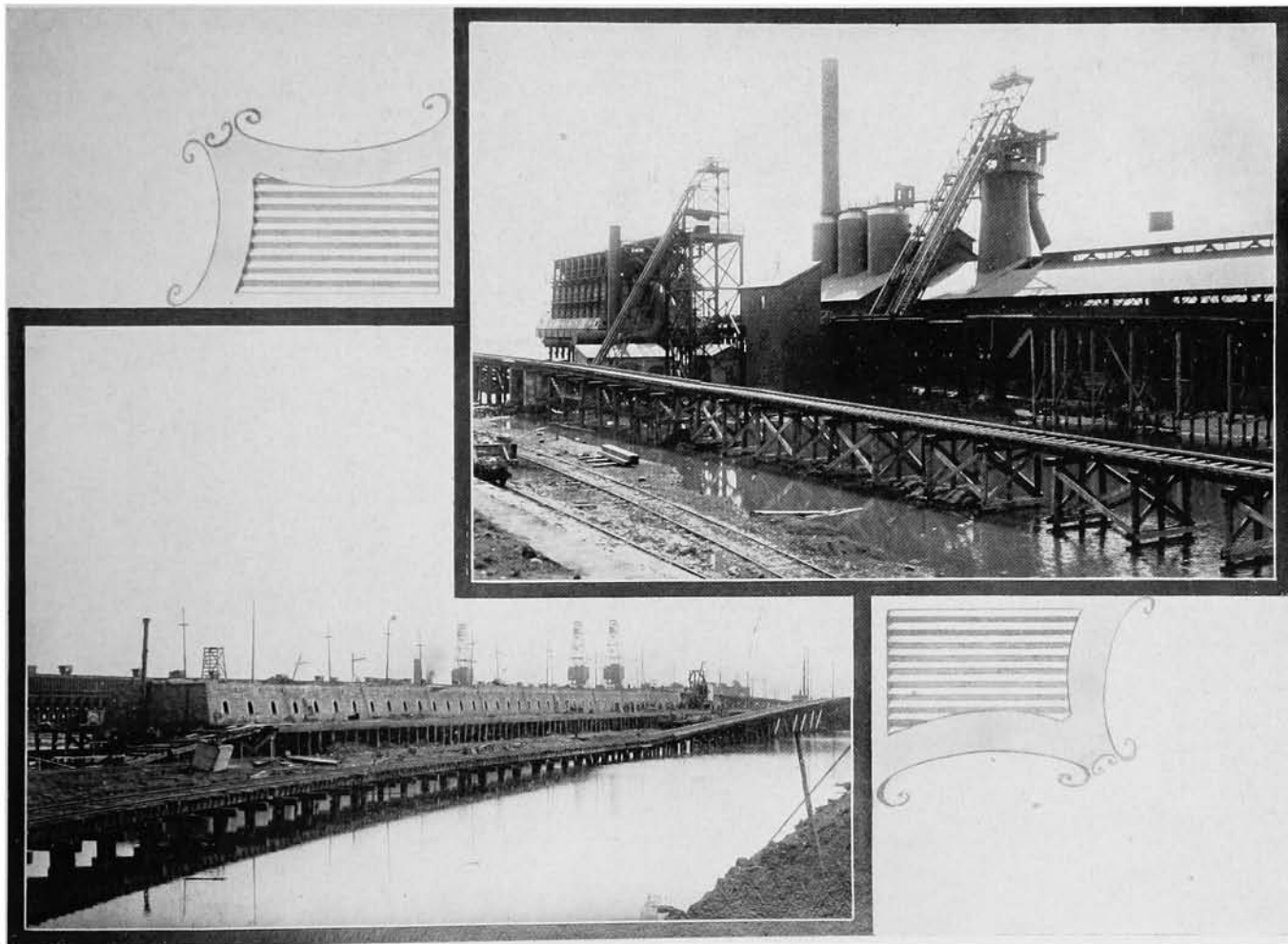
Lake Superior's Rock Bound Shore



Forde Photo

Arthur St. from Court St., looking East, Port Arthur

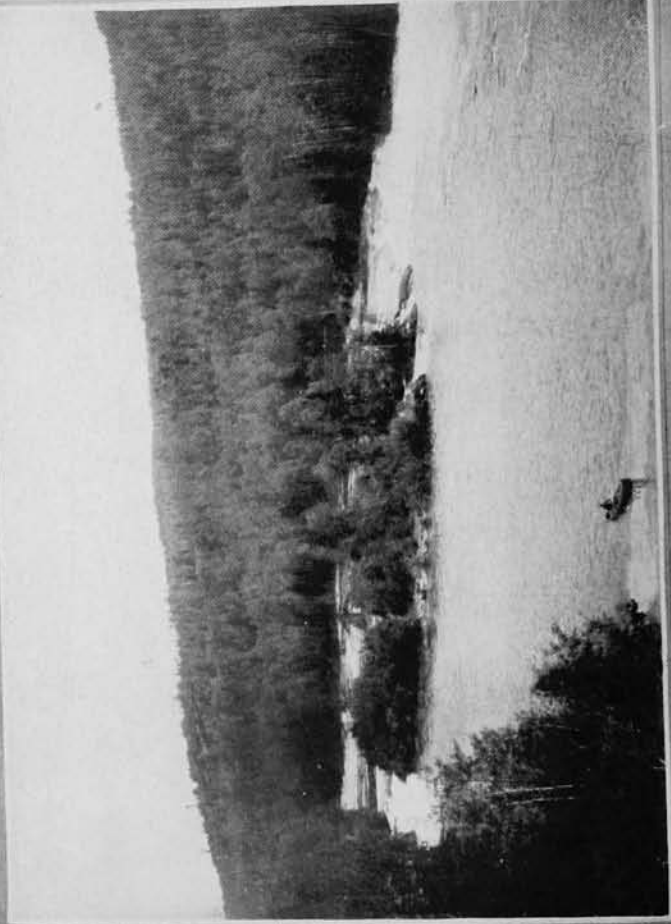
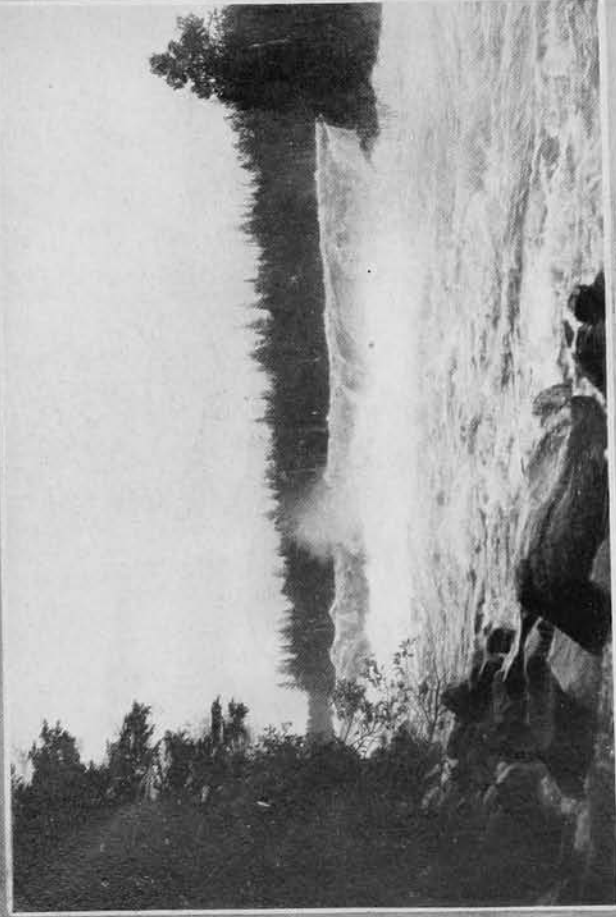
Blast Furnace and Roasting Ovens, Port Arthur



Forde Photo

Coke Ovens Blast Furnace, Port Arthur

Virgin Falls, Nipigon River



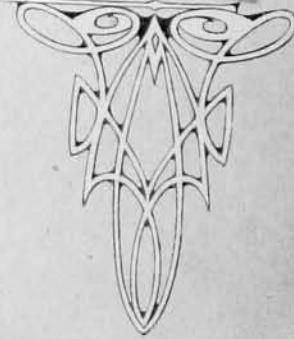
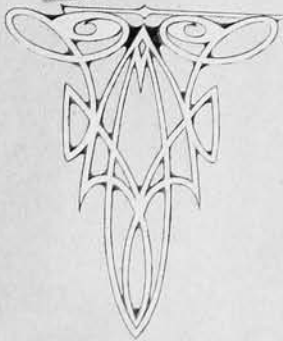
Forde Photo

Island Portage, Nipigon River



Steamer "Wahcondah" after a Battle with Lake Superior

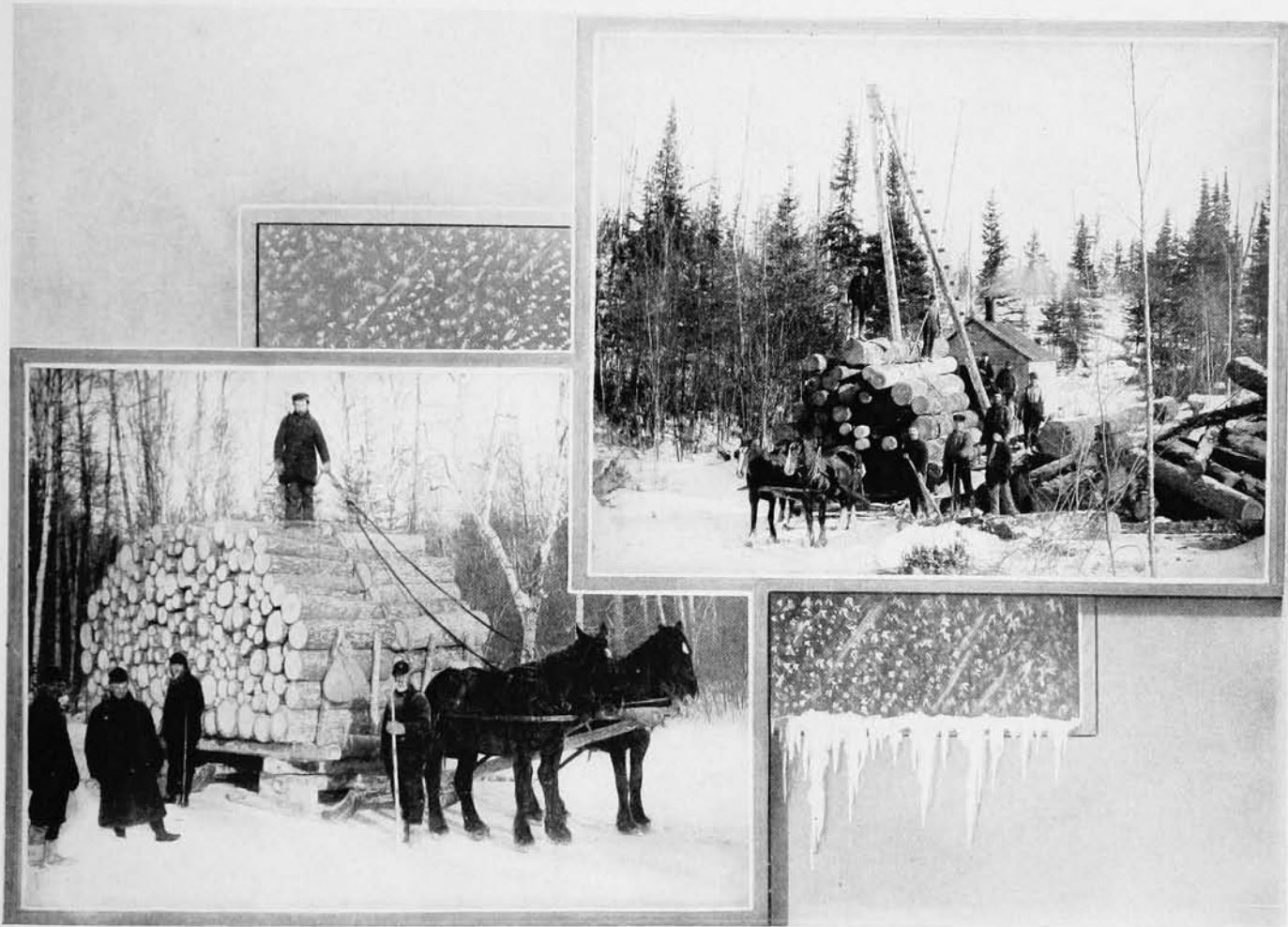
Forde Photo



Forde Photo

In the Lumber Woods near Port Arthur

In the Lumber Woods near Port Arthur

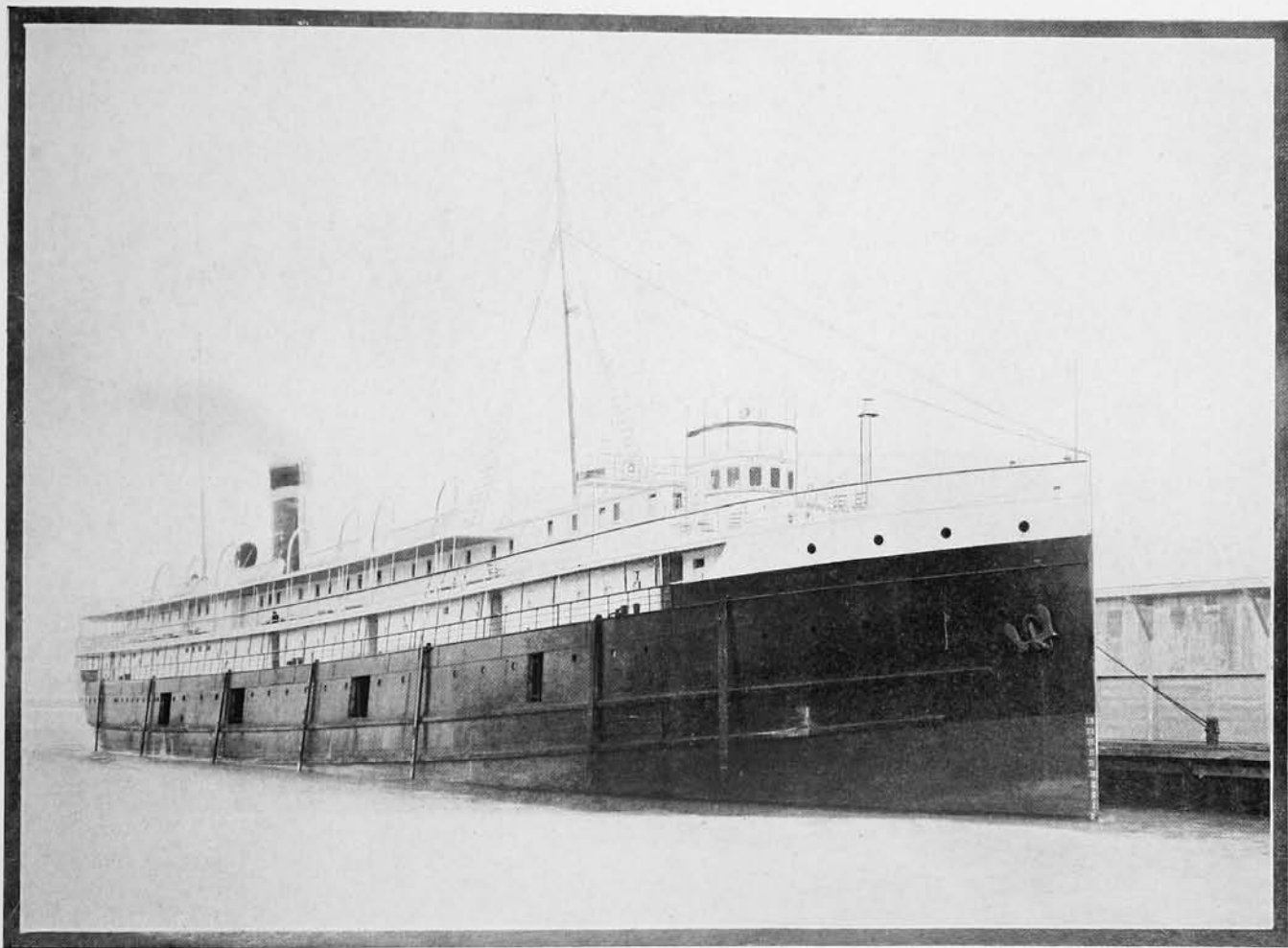


A Large Load of Pulp Wood, A Port Arthur Company's Operations
Forde Photo



Forde Photo

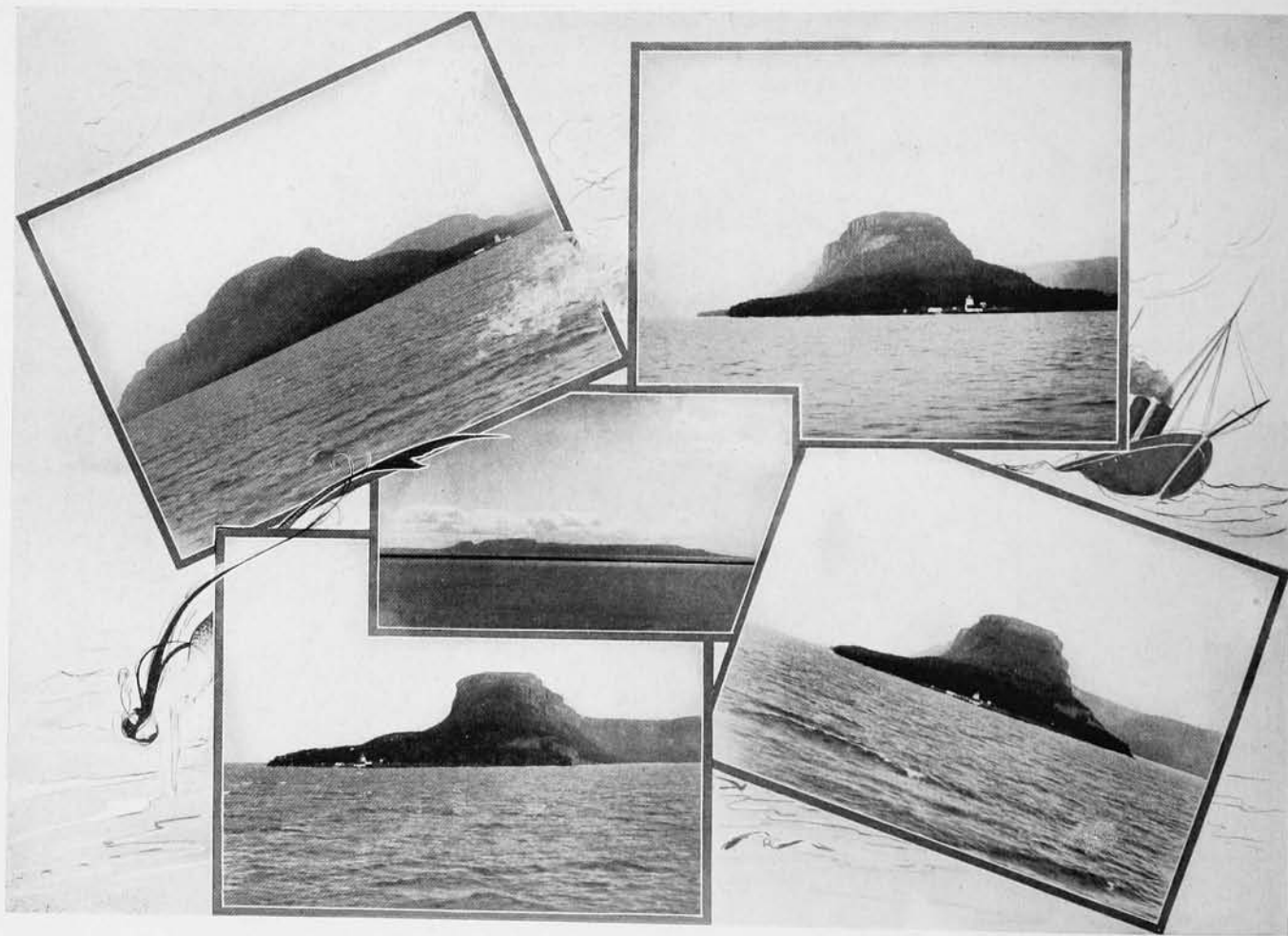
Canadian Northern Station, Port Arthur



Forde Photo

Passenger Steamer Calling at Port Arthur

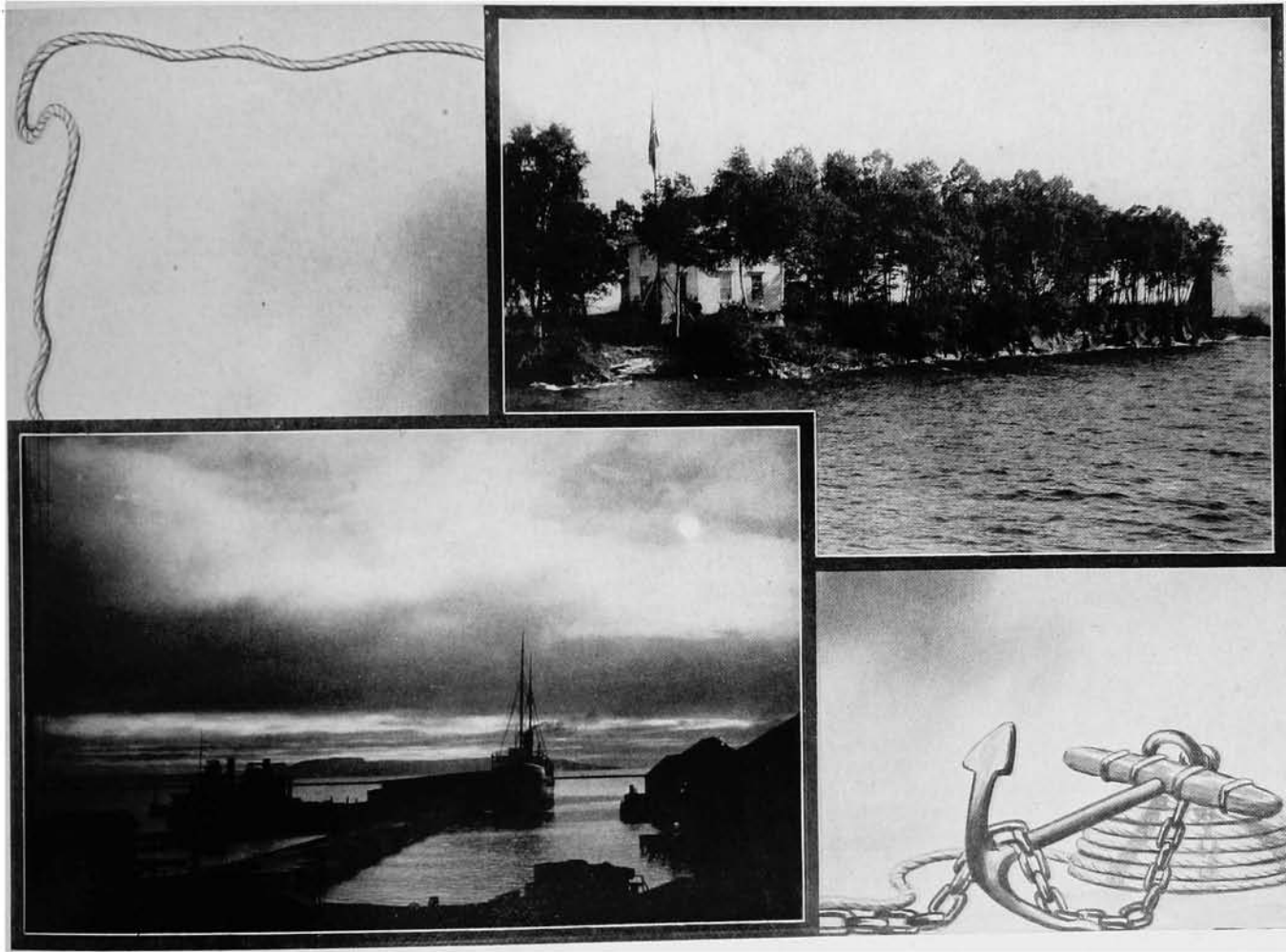
A Passing View of Thunder Cape, 1370 ft. high, 16 Miles from Port Arthur



Forde Photo

Thunder Cape, Sometimes Called the Sleeping Giant, as it appears from Port Arthur

At Pie Island, near Port Arthur



Forde Photo

Moonlight on the Lake, Port Arthur Harbor

Woodland Waterfall, near Port Arthur



The Famous Silver Island on Lake Superior, 23 Miles from Port Arthur

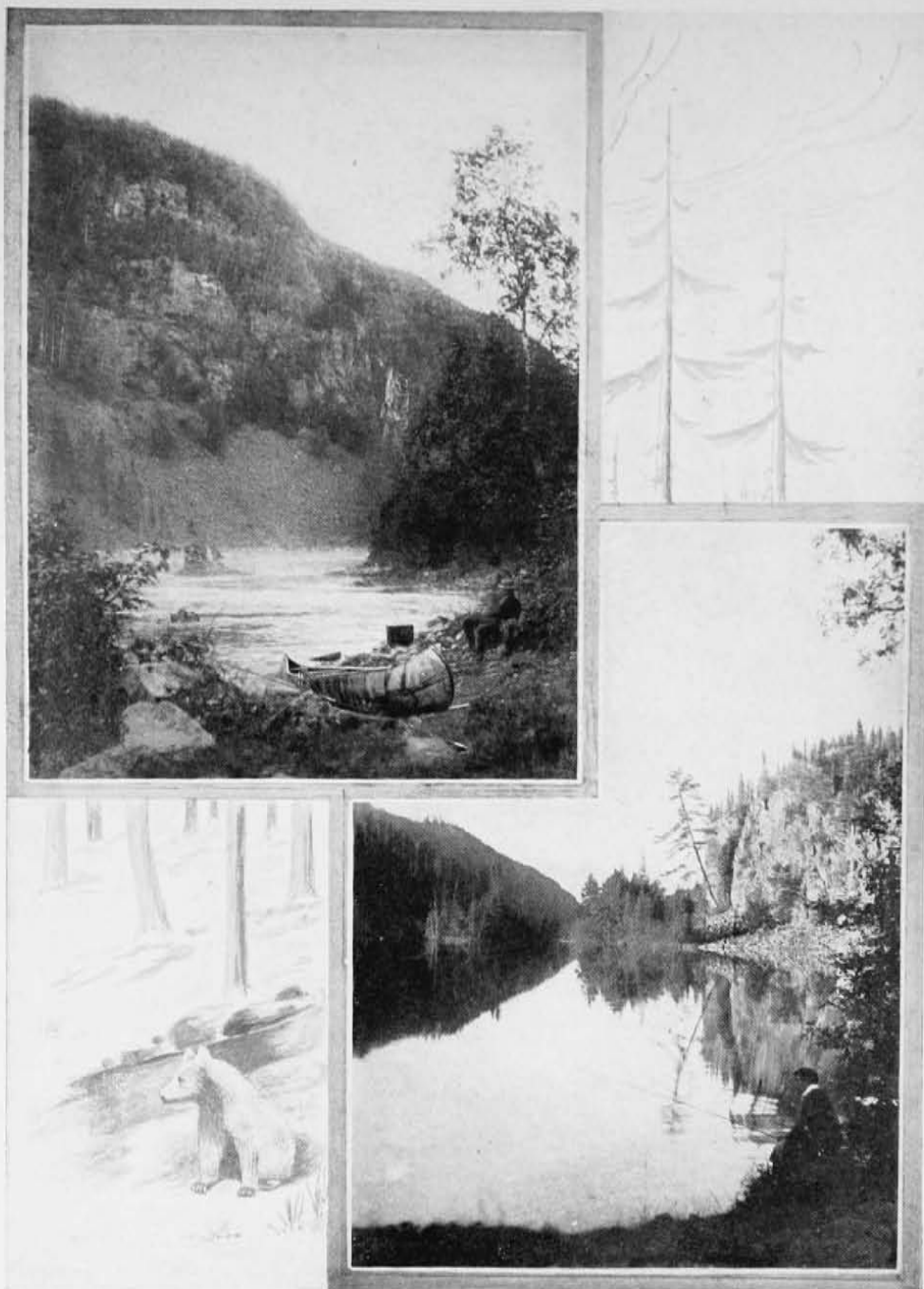


Forde Photo

Mount Mackay, 1140 ft. high

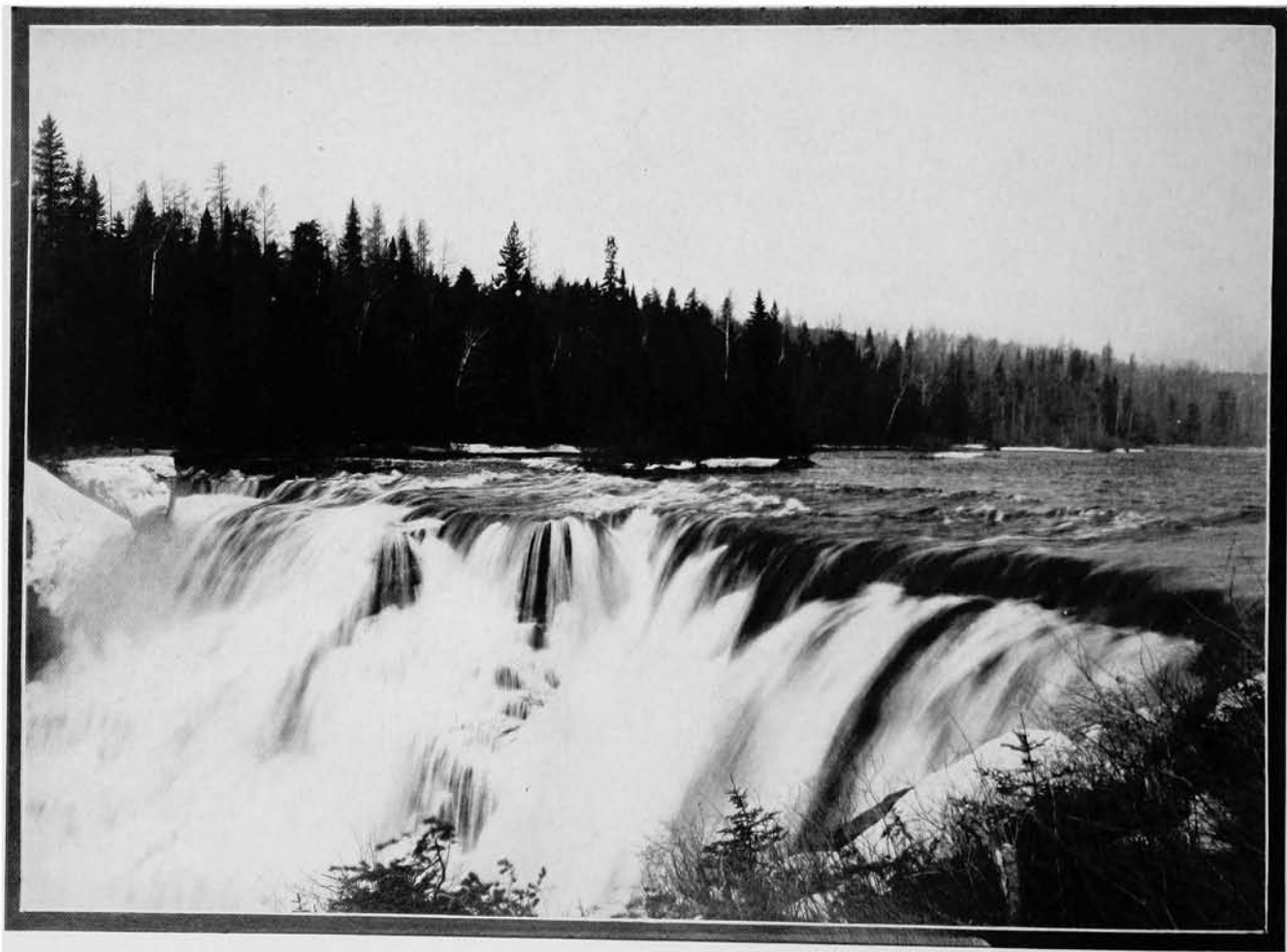
At Pie Island, near
Port Arthur

Down the River from Split Rock Portage, Nipigon River



Forde Photo

Looking up River from Split Rock Portage, Nipigon River



Forde Photo

Kakabeka Falls, 22 Miles from Port Arthur



Forde Photo

Mokoman Falls, Kaministiquia River, 27 Miles from Port Arthur

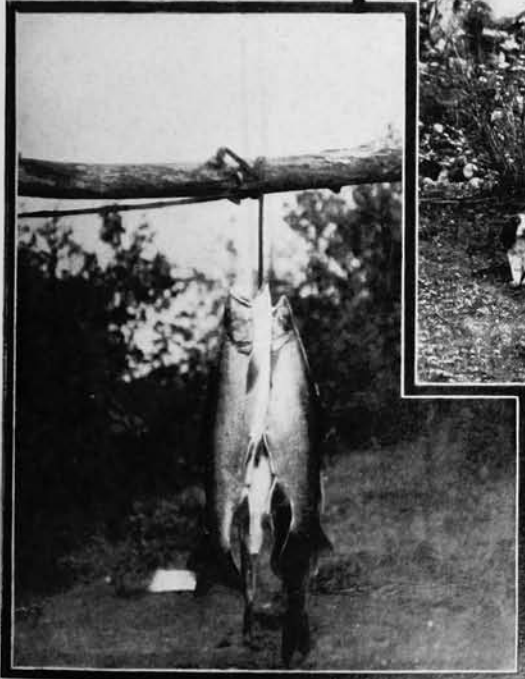
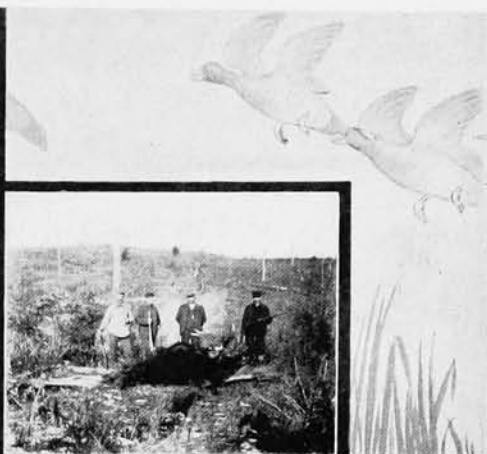


Forde Photo

Steamers Wintering in Port Arthur Harbor

Partridge Hunting

A Canadian Moose

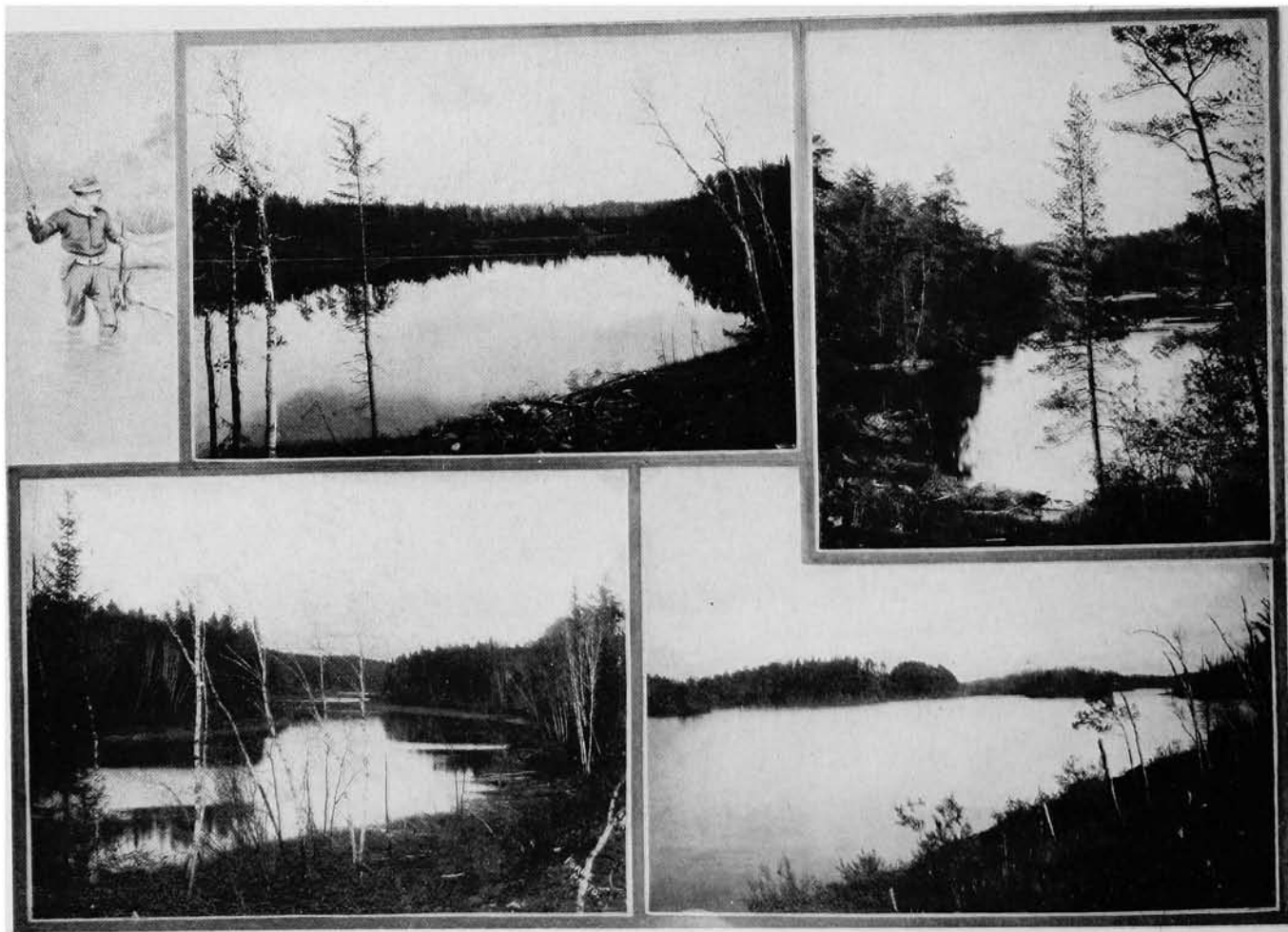


Fishing on the Nipigon River
Forde Photo

Duck Hunters' Camp at White Fish Lake

Steep Rock Lake, near Port Arthur

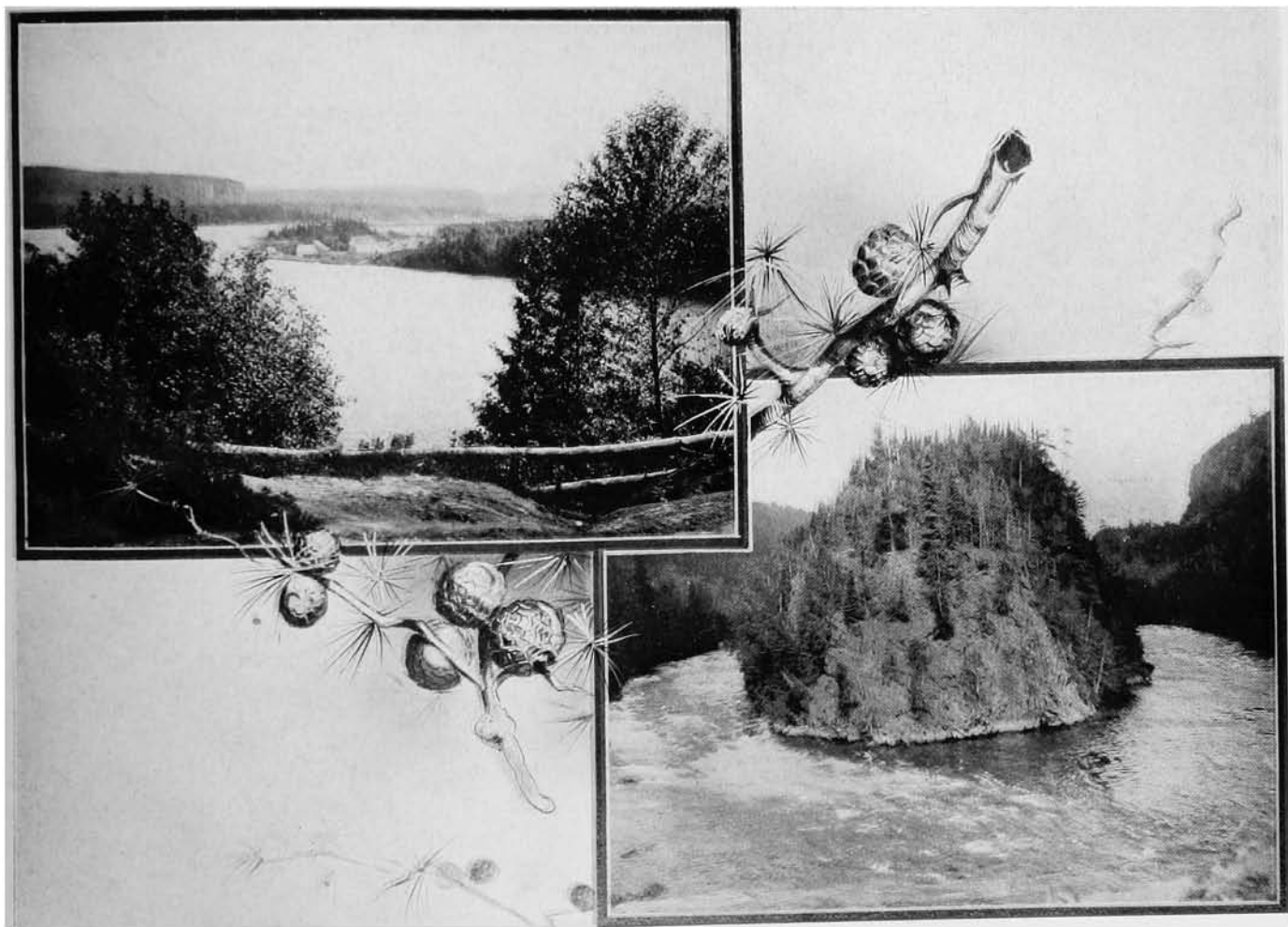
Seine River near Port Arthur



View on Seine River near Port Arthur
Forde Photo

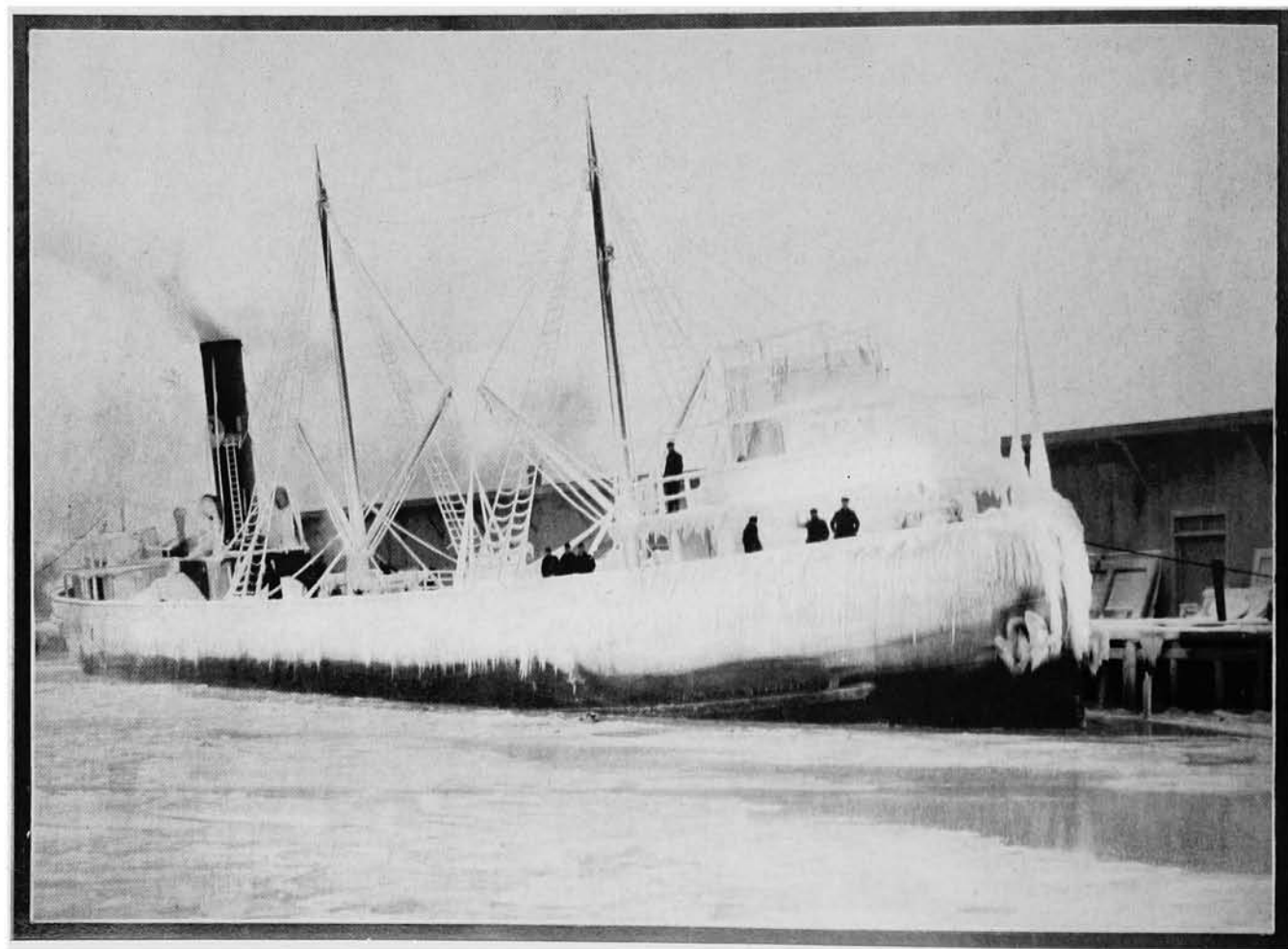
Steep Rock Lake West of Port Arthur

Mouth of Nipigon River at Lake Superior



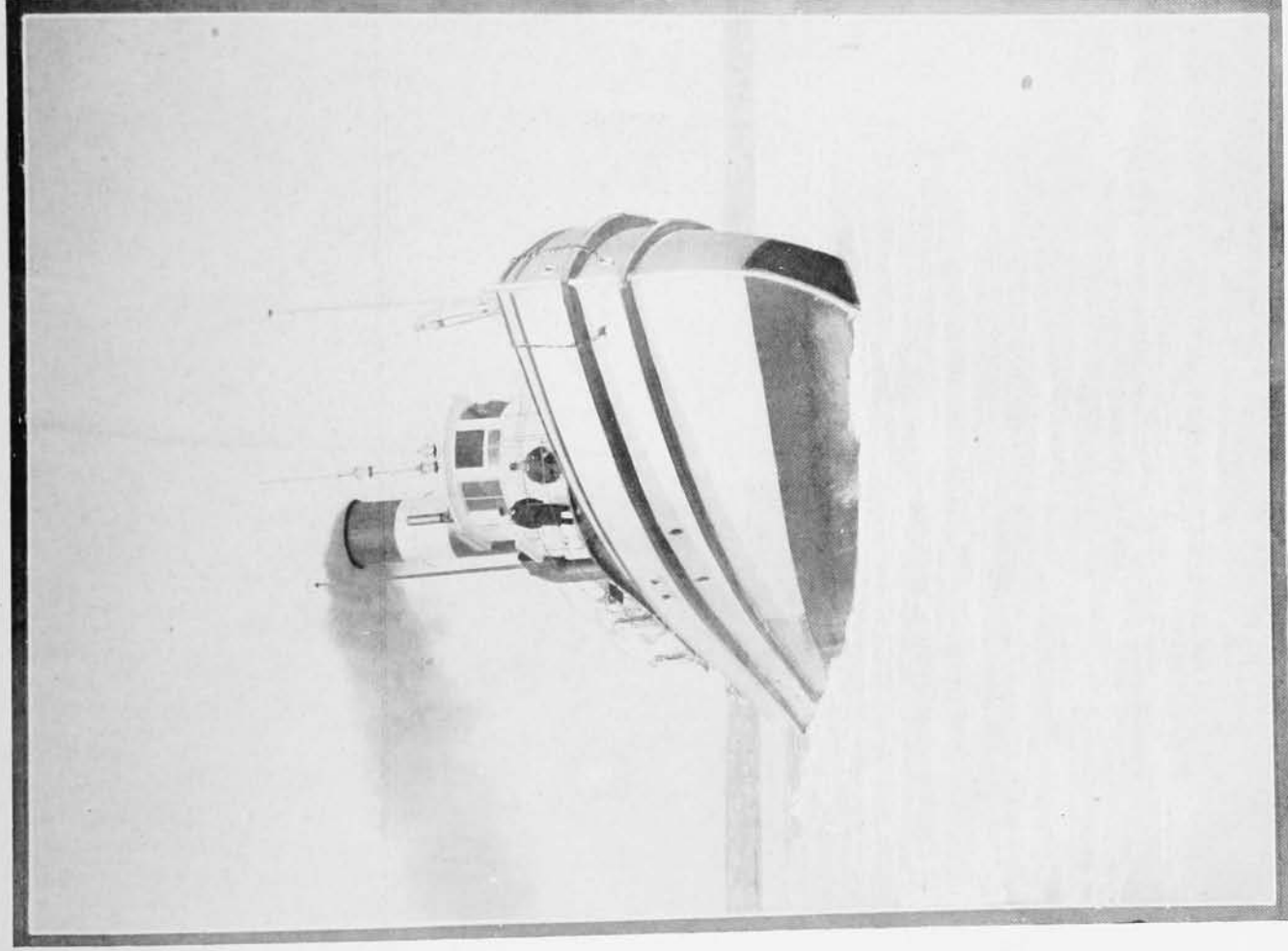
Forde Photo

Split Rock, Nipigon River



Forde Photo

A Port Arthur Steamer in Winter Dress



Forde Photo

Ice Breaking Tug James Whalen