

Industrial Midland
and PENETANGUISHENE
The Tourist's Retreat

Industrial Midland

AND

Penetanguishene



The Tourists'
Retreat

Published by
The R. O. SMITH, CO., Orillia

Midland, Ontario

A TOWN of about 4,000 population, on the south shore of Midland Bay, originally called Munday's Bay, is delightfully situated, being located on an amphitheatre with hills sloping to the east and west in the most picturesque manner. The harbor is, beyond doubt, the best on all the great chain of lakes, well land-locked, yet sufficiently capacious for the largest craft, and free from any obstructions.

The town is also the terminus of the Midland Division of the G.T.R., being about 125 miles north of the city of Toronto, and owing to the immense output of lumber and lath from the various sawmills which line the shores of the Bay, together with the grain trade of its two fine elevators, and the recently established plant of the C.I.F. Co., Midland may well be considered a live railway town.

During the season of navigation there is steamboat connection with Parry Sound, Byng Inlet, French River and other ports of the north shore, stage and boat connection daily with Penetanguishene.

To the south of the town is situated Park Lake, one of the most beautiful little lakes the eye ever beheld. To the north, and within easy reach is that magnificent archipelago, the eastern arm of the Georgian Bay, known as the Tourists' Paradise.

The town is installing a splendid system of waterworks. The water supply will be procured from the excellent springs lying to the west of the town. The water will be distributed from a reservoir situated on the brow of the western slope, which is 185 feet higher than the principal business street at its northern extremity.

Penetanguishene

THIS historical town, situated on an arm of Georgian Bay called Penetanguishene Bay, was one of the first settlements in Canada after Montreal, the French pioneers at that early date having passed up the Ottawa River, through Lake Nipissing, down the French River and then coasted along the north shore until they reached the harbor of Penetanguishene.

There are many interesting events connected with the history of this town. It was near this place that the Jesuit Indian villages were situated when the terrible Iroquois massacre took place, and it was in this section that early missionaries suffered martyrdom, and it is to commemorate their memory that the Memorial Church is now built in Penetanguishene.

It was here that Sir John Franklin had his headquarters in his journey to discover the Northwest passage, and some of the old settlers still speak with pleasure of his sojourn in the town.

But these old associations are nearly all forgotten, and Penetanguishene is now known as one of the favorite summer resorts of Canada, and as a manufacturing centre for lumber, shingles, boxes, fruit baskets, boat building, etc.

It is at Penetanguishene that the great tourist travel to and from the many thousands of islands on the north shore makes connection with the Grand Trunk Railway System; in fact, this town is the supply port for the tourists on these islands. Numbers of Americans have their steam yachts and houseboats at Penetanguishene, and with their families and friends spend a delightful summer among the islands of Georgian Bay.

The town is beautifully situated near the head of the Bay, has first class water supply, sewers, electric lights, etc. In addition to the hotels of the town, the Penetanguishene Summer Resort, situated near the Bay, has accommodation for 300 guests and is now favorably known over the continent, while some fine hotels have been lately built on the islands between this port and Parry Sound, which give advantages for fishing and hunting not to be surpassed. The tourist travel through Penetanguishene to the 30,000 Islands of the Georgian Bay has largely increased during the last few years, and as a result the islands are being rapidly taken up, but to fully appreciate the beauties of this section of Canada one must take the trip from Penetanguishene to Parry Sound by steamer.

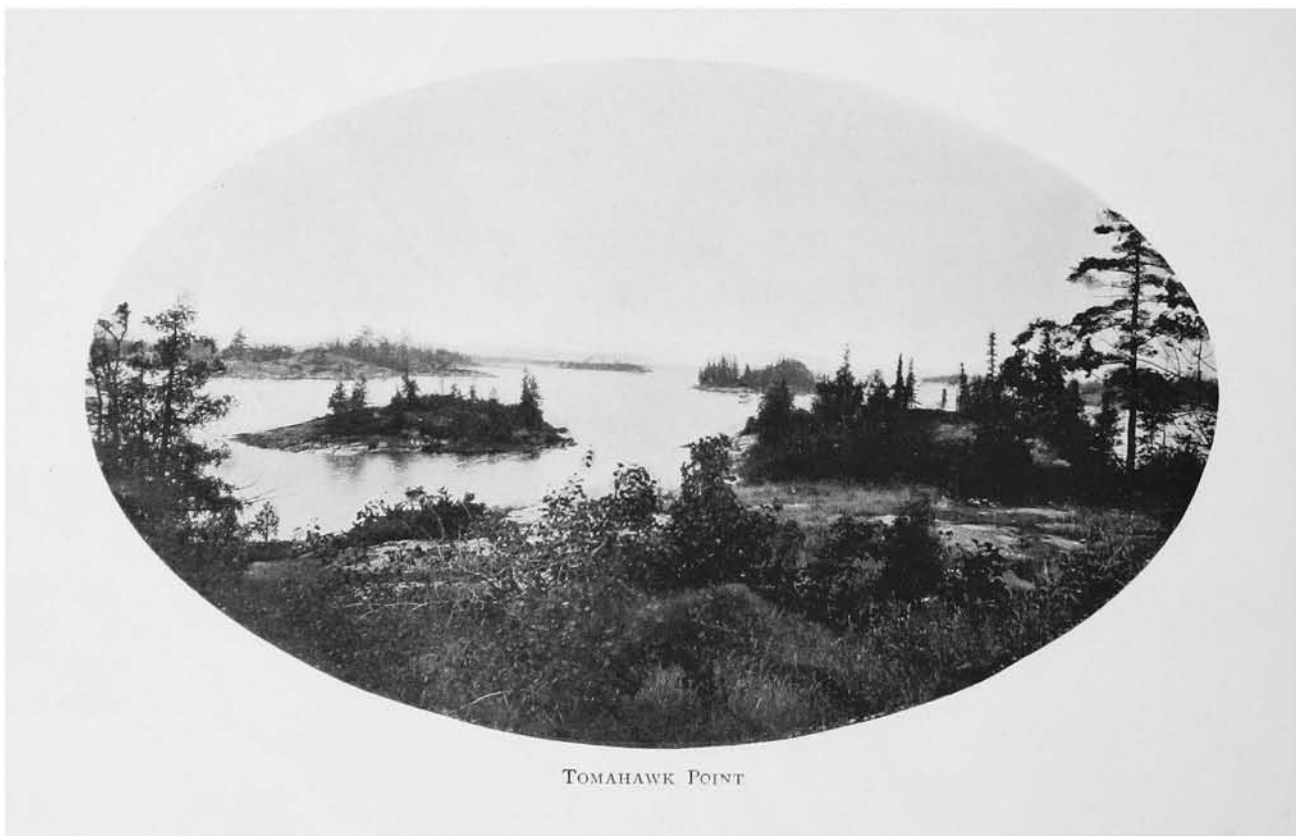
The population of the town is about 3,000.



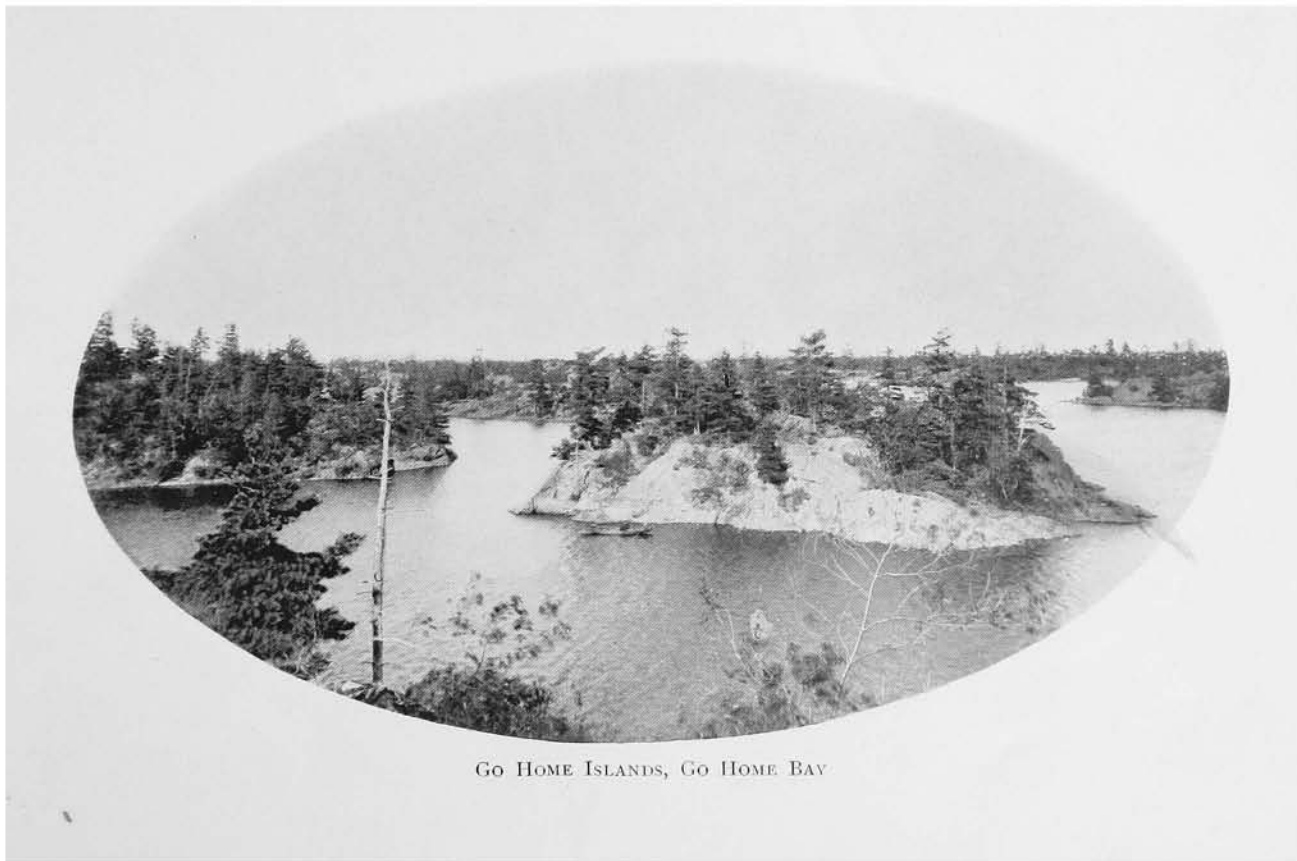
KING STREET, MIDLAND (LOOKING SOUTH)



MUSKOS ROCK, NEAR MIDLAND



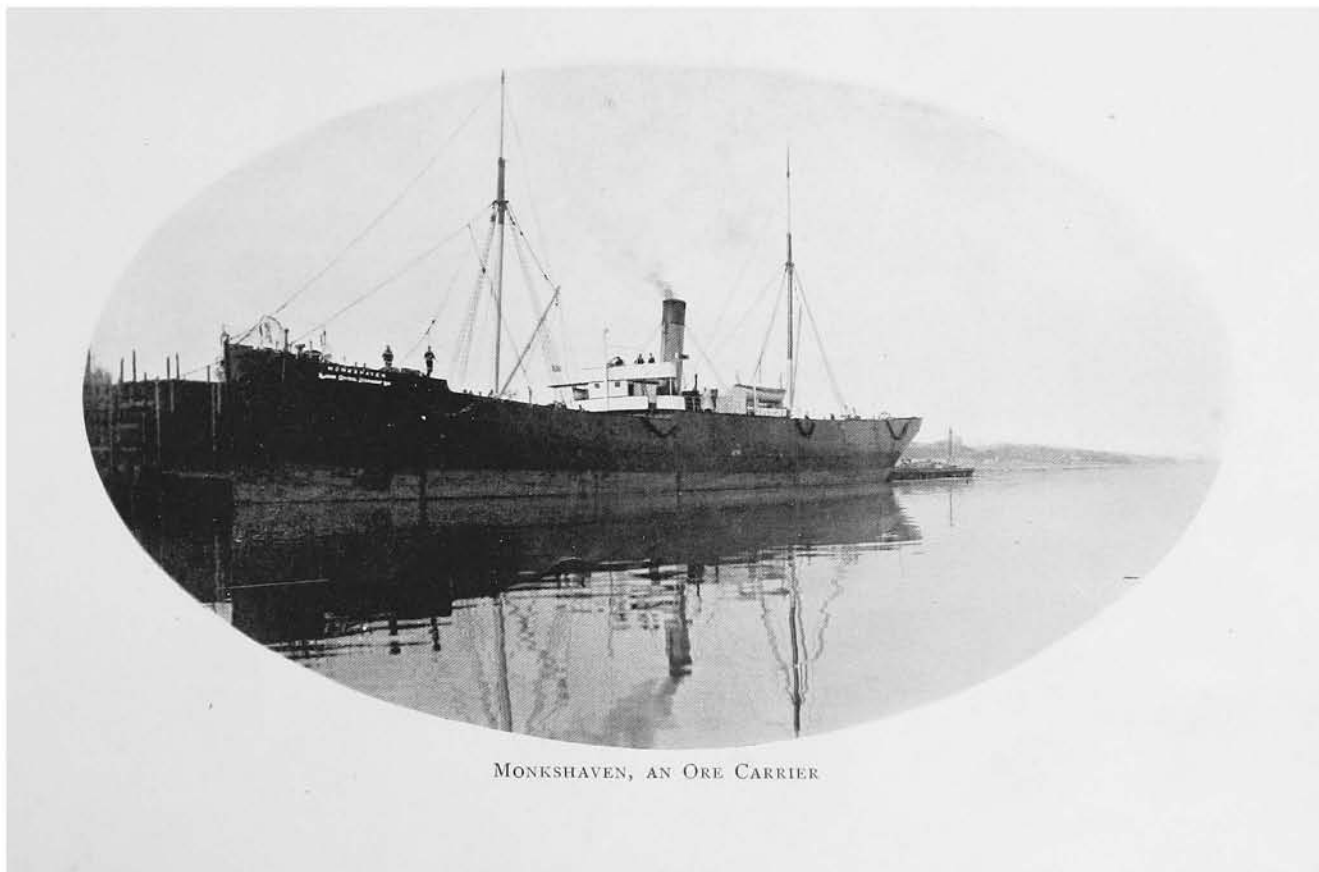
TOMAHAWK POINT



GO HOME ISLANDS, GO HOME BAY



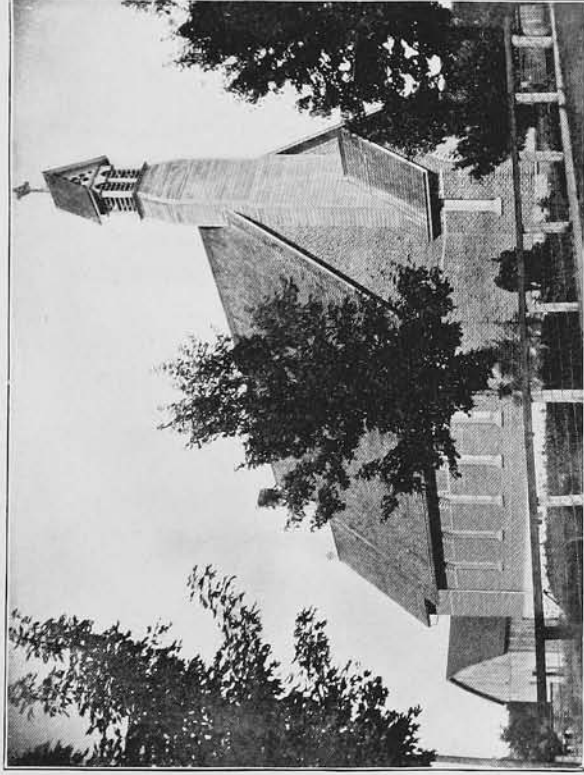
MOUTH MUSKOS RIVER



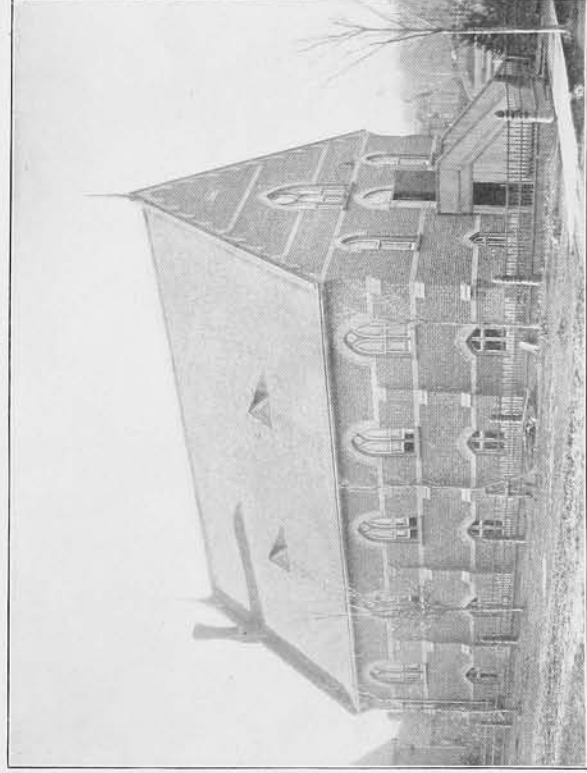
MONKSHAVEN, AN ORE CARRIER



A STEEL ORE FREIGHTER



CHURCH OF ENGLAND, MIDLAND



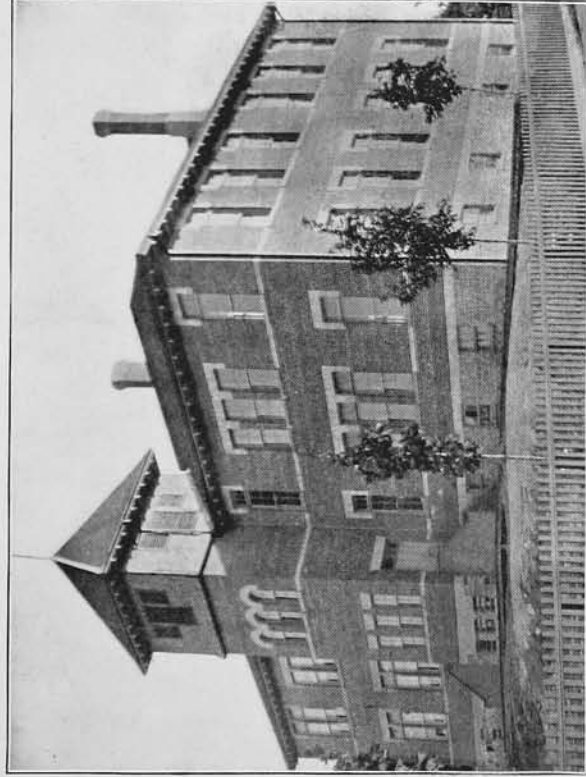
PRESBYTERIAN CHURCH, MIDLAND



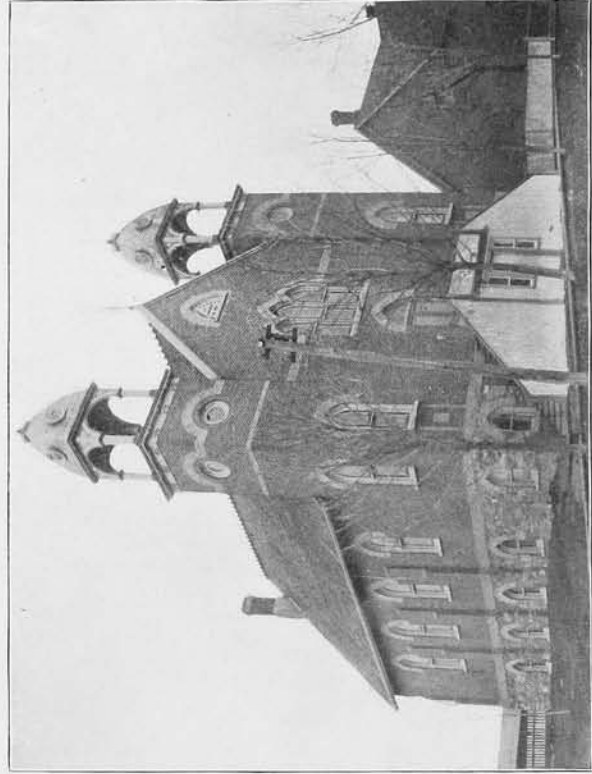
BAPTIST CHURCH, MIDLAND



ROMAN CATHOLIC CHURCH, MIDLAND



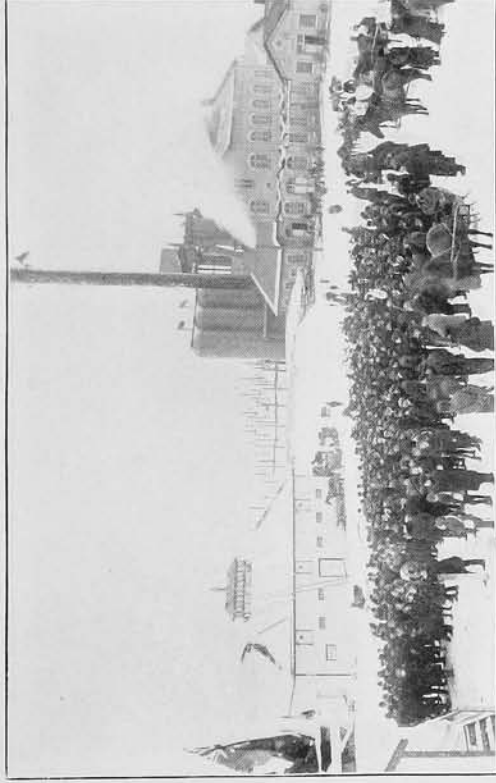
PUBLIC SCHOOL, MIDLAND



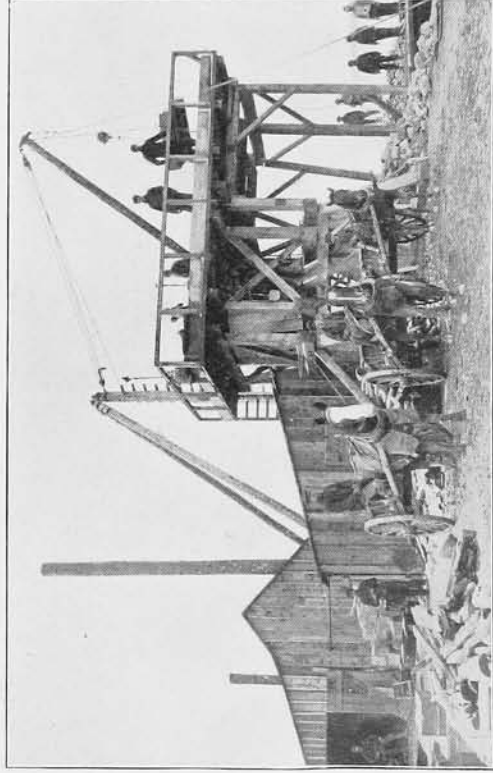
METHODIST CHURCH, MIDLAND



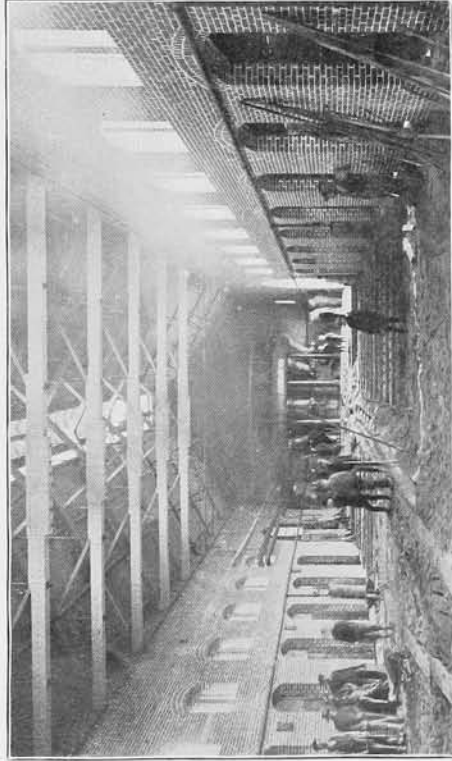
MIDLAND SMELTER



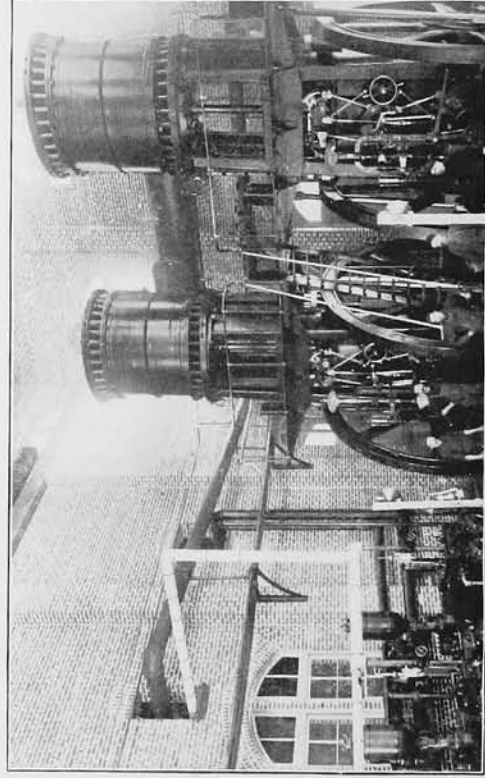
OFFICIAL OPENING OF SMELTER



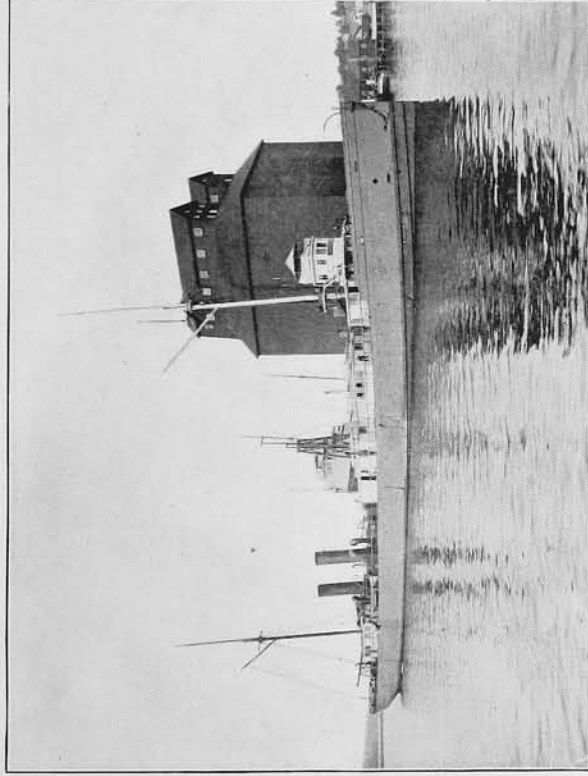
STONE CRUSHER, MIDLAND SMELTER



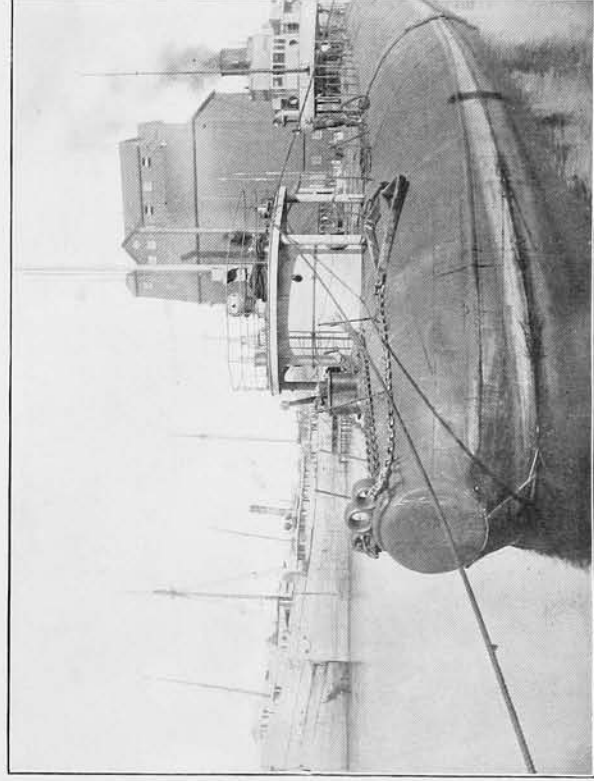
THE CAST HOUSE, MIDLAND



ENGINES AND PUMPS, MIDLAND SMELTER



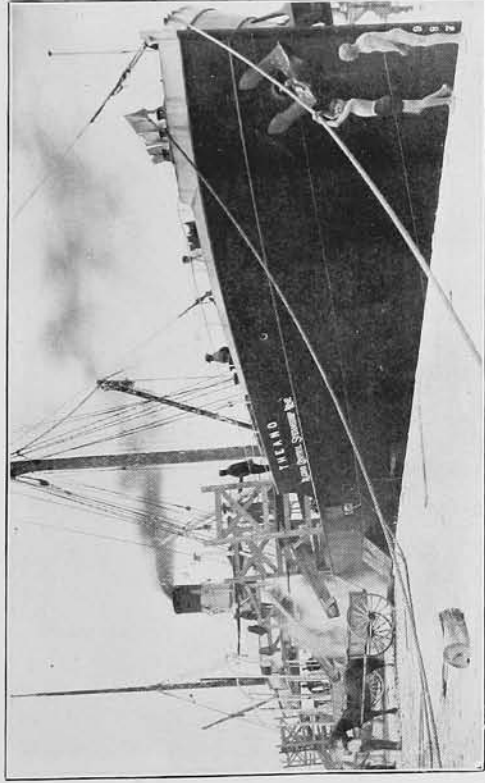
HARLEM, A STEEL FREIGHTER



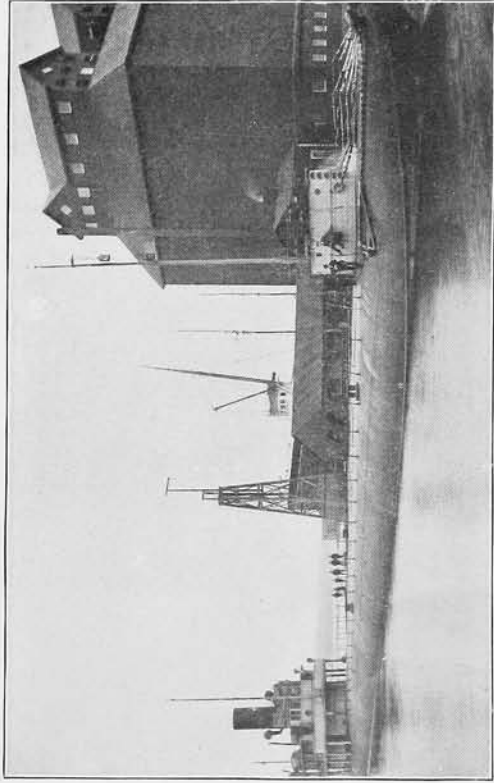
THE THOMPSON (WHALEBACK)



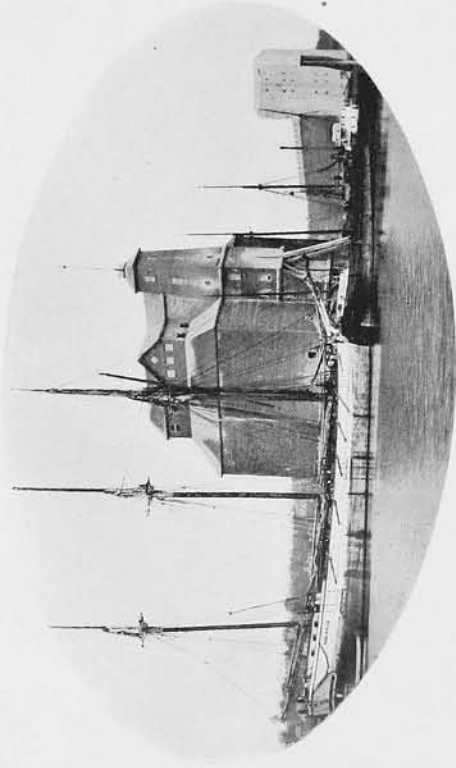
THE BURTON BLOCK, MIDLAND



THE THEANO, AT SMELTER DOCK



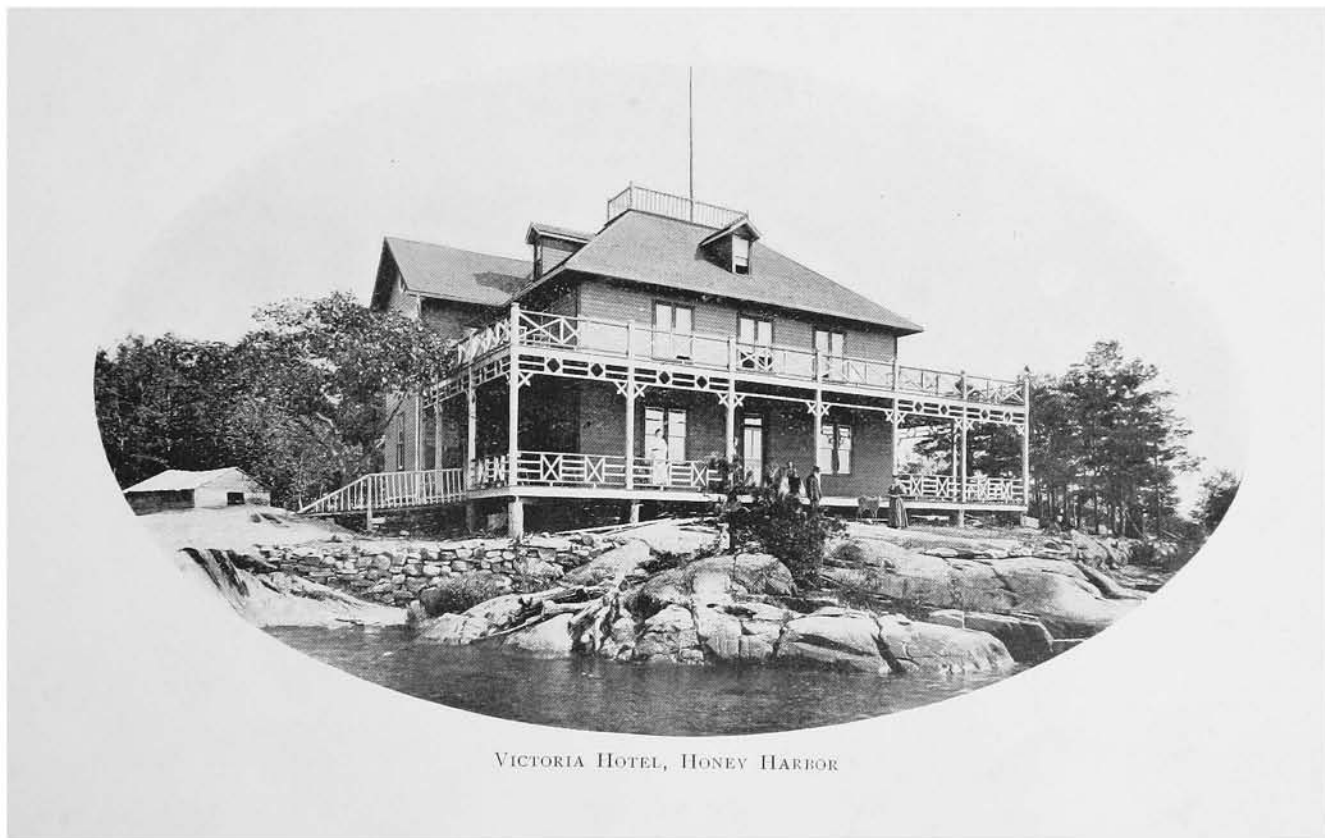
A WHALEBACK, "TREVOR"



VIEW, MIDLAND HARBOR



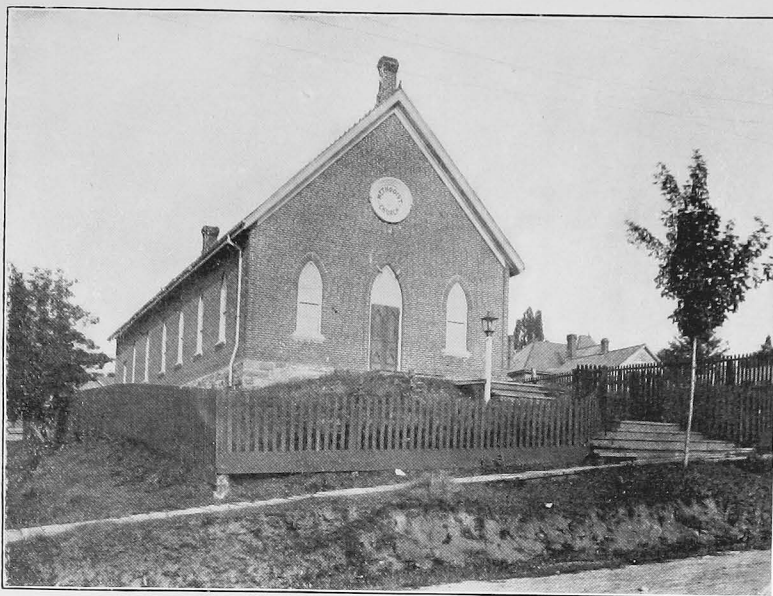
AT THE DOCKS, MIDLAND



VICTORIA HOTEL, HONEY HARBOR



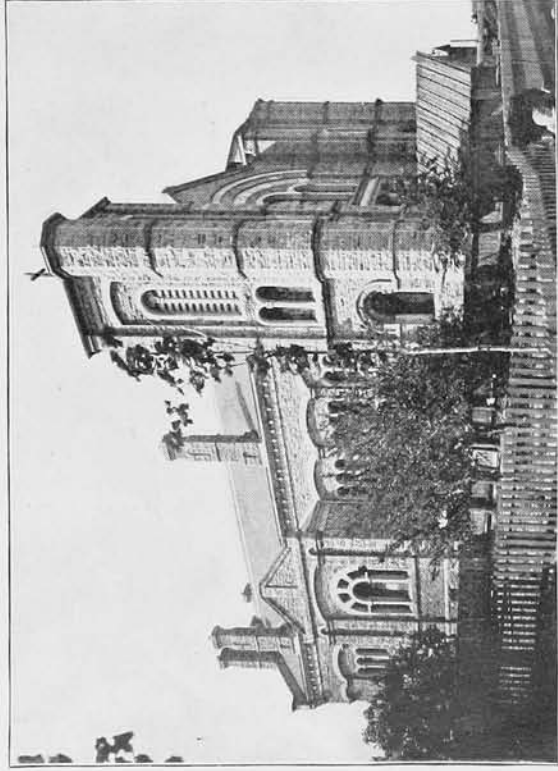
BIRDSEYE VIEW, PENETANGUISHENE



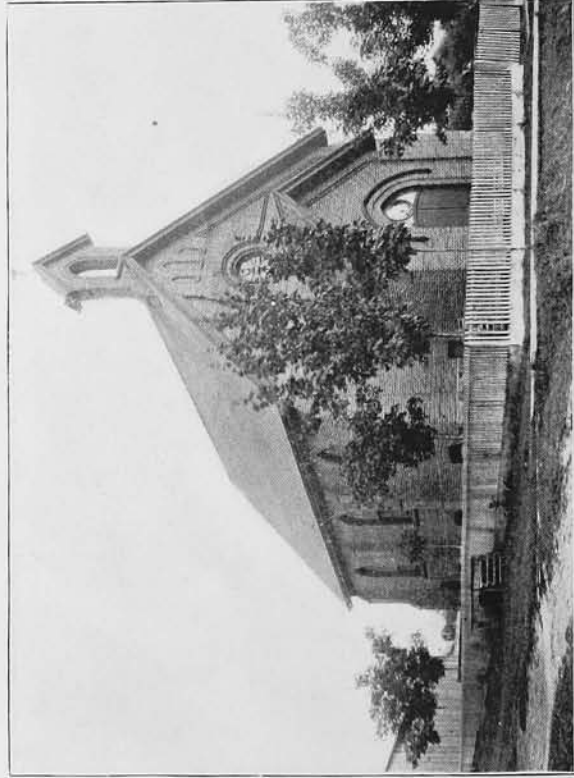
METHODIST CHURCH, PENETANGUISHENE



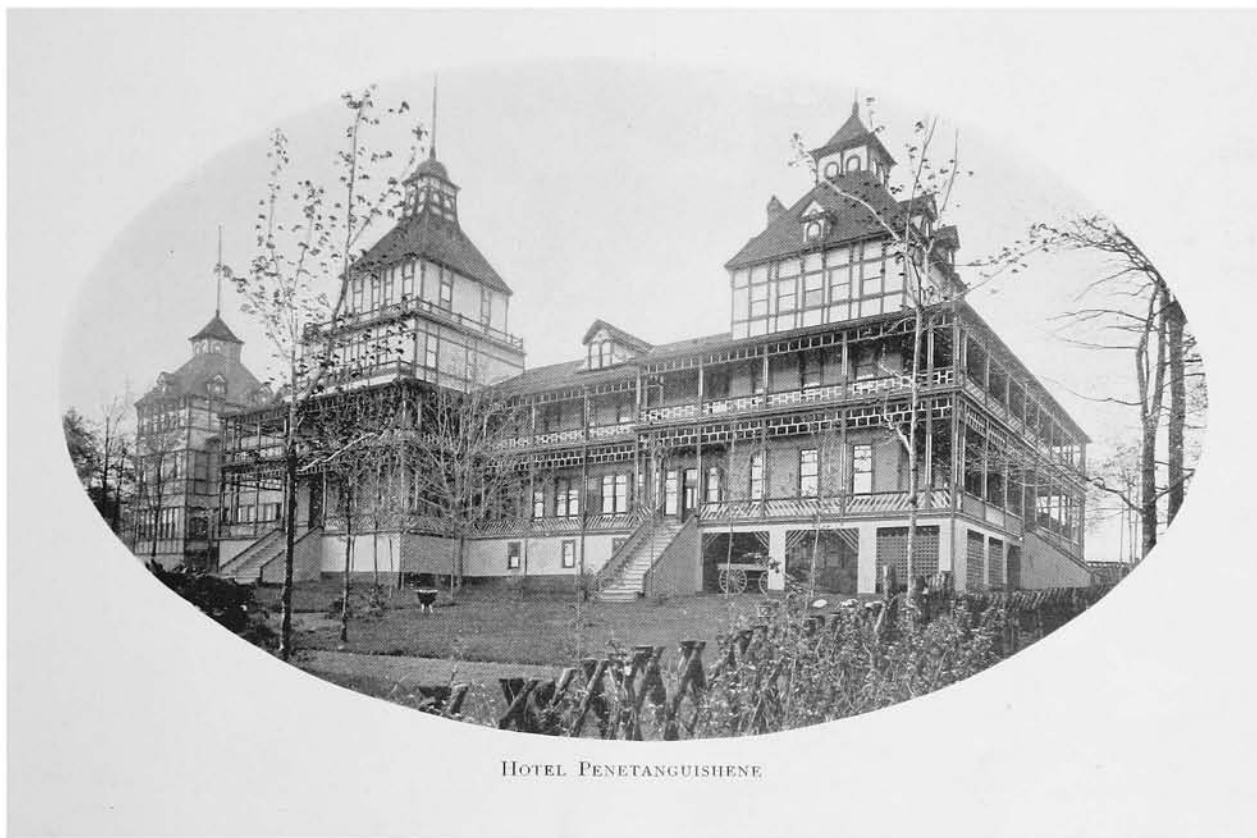
ENGLISH (ALL SAINTS') CHURCH, PENETANGUISHENE



JESUIT MEMORIAL CHURCH



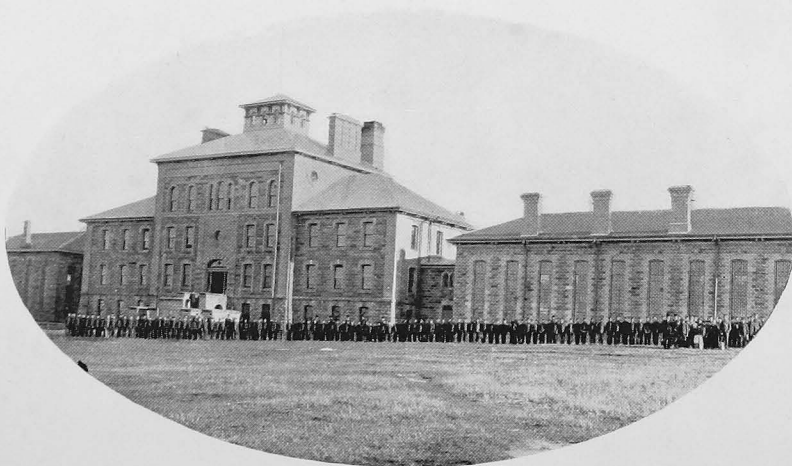
PRESBYTERIAN CHURCH, PENETANGUISHENE



HOTEL PENETANGUISHENE



MAGAZINE ISLAND, PENETANGUISHENE BAY



REFORMATORY FOR BOYS, PENETANGUISHENE
(Front View)



DRIVEWAY OPPOSITE PENETANGUISHENE HOTEL.



1. MR. DRUMMOND'S RESIDENCE, PENETANG.
(Manager of Midland Smelter)

2. MR. C. BECK'S RESIDENCE, PENETANG.

3. MR. GEO. COPLAND'S RESIDENCE, PENETANG.

