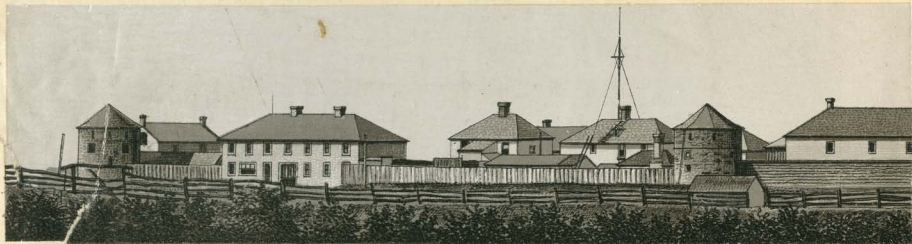


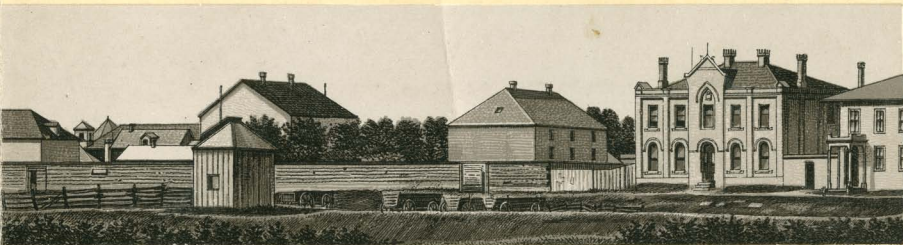
WINNIPEG



FORT



WINNIPEG



GARRY.

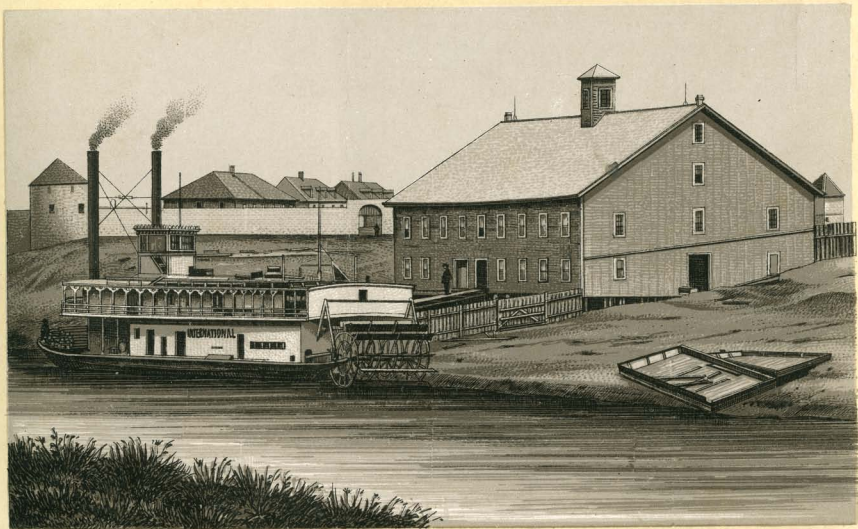


IN 1882.



INTERIOR FORT GARRY.





RED RIVER LANDING AT FORT GARRY.



MAIN STREET, FROM BANNATYNE ST. NORTH.



HUDSON'S BAY CO'S WAREHOUSE.



BANK OF MONTREAL & MORRIS BLOCK.



DOMINION CUSTOM HOUSE & LAND OFFICE.



POST OFFICE.



CITY HALL.

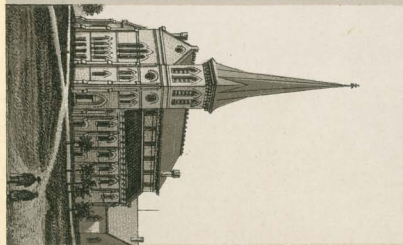




ST. MARY'S CONVENT.



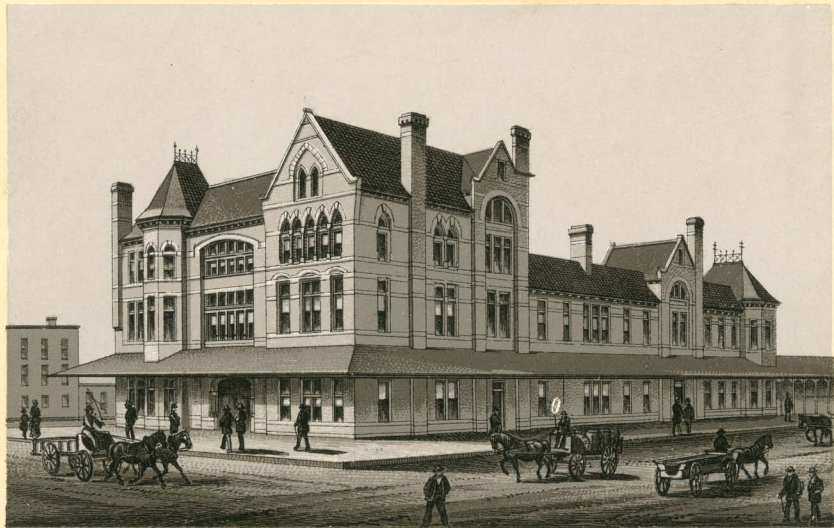
ST. JOHN'S COLLEGE.



KNOX CHURCH.



MANITOBA COLLEGE.



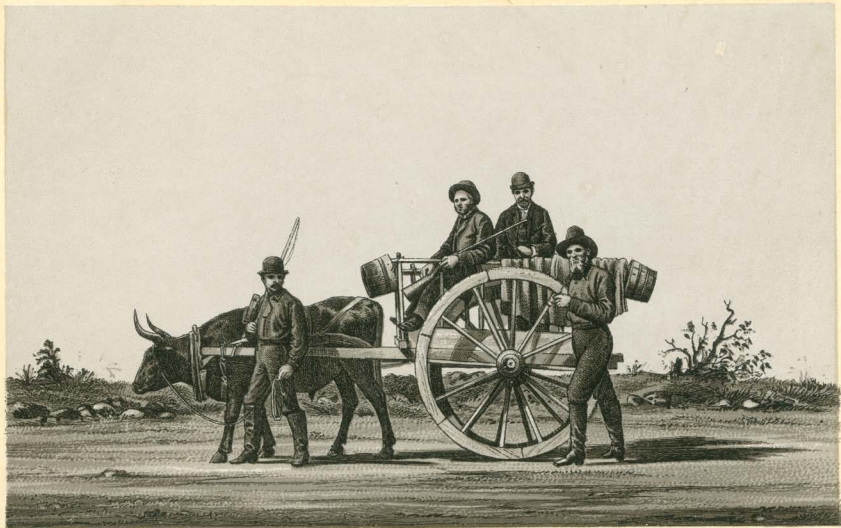
CANADIAN PACIFIC DEPOT & GENERAL OFFICES.



LOUISA BRIDGE, RED RIVER.



A DOG TRAIN.



*Wittmann Bros, 45 Murray St, New York. Sole Agents for Louis Glaser's Souvenir Albums.*

## **A RED RIVER CART.**

*Published by Kennedy, Strome & Co, Winnipeg, Manitoba.*





*Kennedy, Strom & Co.*

*Winnipeg,  
Manitoba.*

