

**Souvenir
View Book of**



**The Twin Cities
of Canada**

Fort William and Port Arthur

**Published by
W. G. MacFARLANE
Toronto, Can.**

**TWO OF THE
MOST
THRIVING
CITIES OF
THE WEST**

**Publisher of Souvenir View Books and
Picture Cards of Leading Cities
and Tourist Resorts of Canada
and the United States.**



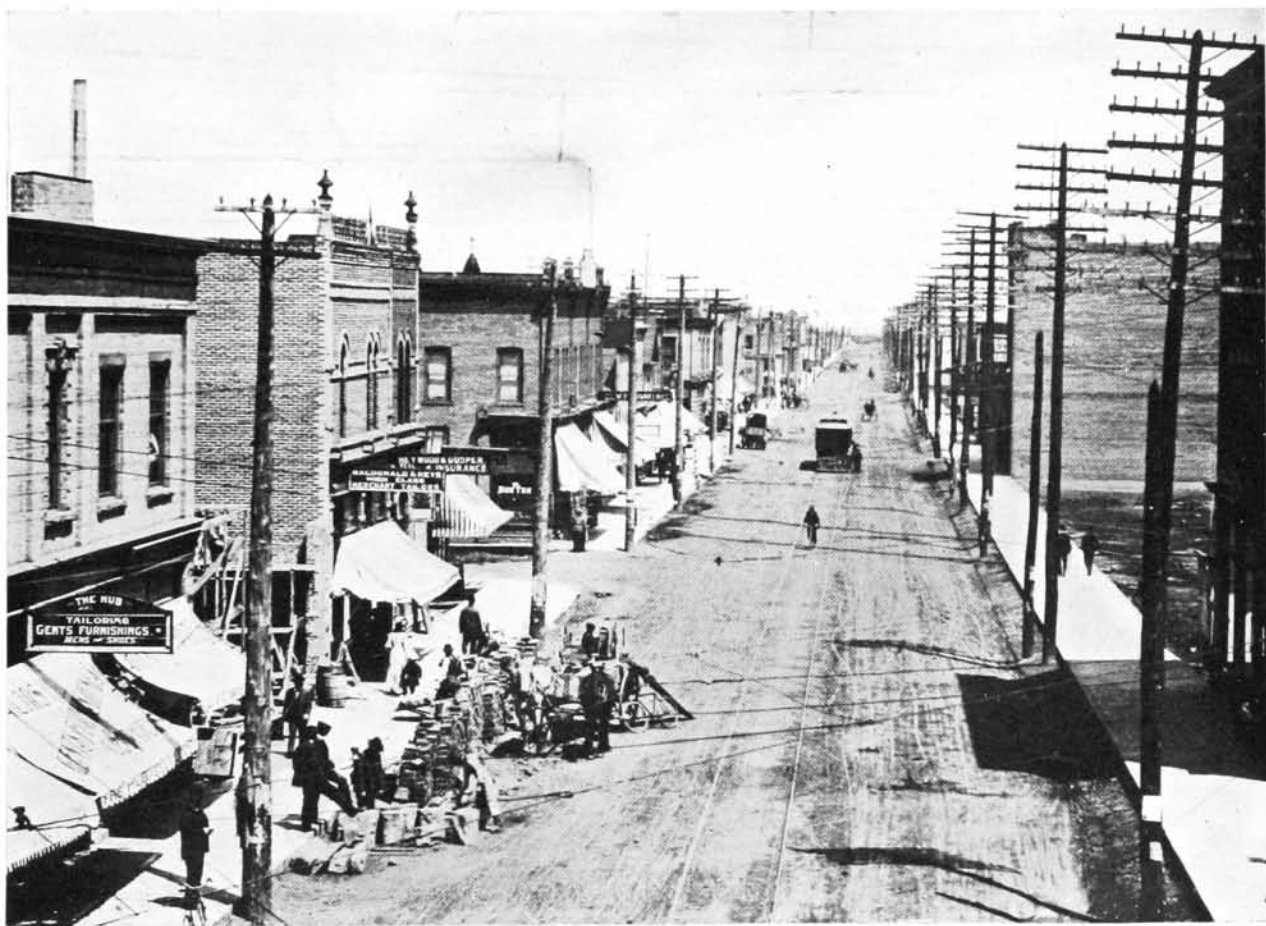
FORT WILLIAM



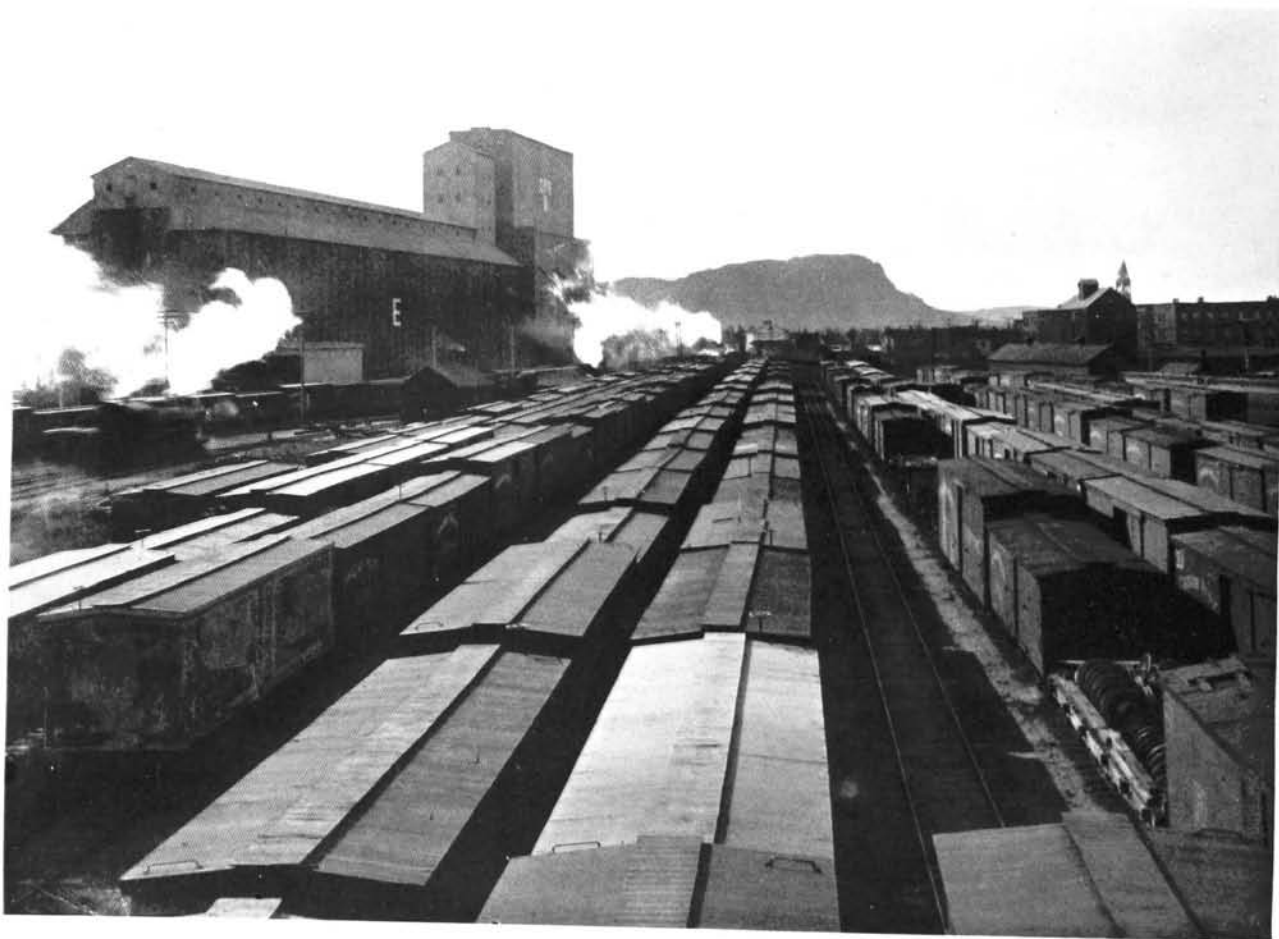
THE city of Fort William, which has at the present time a population of about 13,000 people, is situated on the Kaministiquia River, where it empties into Thunder Bay. Fort William is the shipping point on the Great Lakes for the Canadian Pacific Railway, and has elevator capacity for ten to twelve million bushels of grain. Its elevators are of the newest and most modern construction. During the year 1906, 858 vessels arrived at the port of Fort William. The Ogilvie Flour Mill has a capacity of 3,000 barrels a day; this mill contains the largest induction motor in use in Canada. In the near future Fort William will have the largest grain elevator in the world, which will have a capacity of 12,000,000 bushels of grain. With the filling up of the Great West, Fort William will increase in prosperity and the future holds out for this thriving city much promise. From a scenic point of view, Fort William is an interesting point. Nearby are the famous Kakabeka Falls (with a capacity of 100,000 horse power), one of the finest cataracts in Canada. Here the Kaministiquia breaks through a canyon of black slate. It has a fall of 115 feet. A protruding black ledge divides the cataract, the smaller part being composed of a series of cascades. Below the fall the chasm contracts and narrows, making a gloomy and fearsome background to the foam-crested cascade. Fort William is situated on a level plain lying at the base of Mount McKay, a huge mountain which looms up in the near distance. Thunder Bay is a magnificent sheet of water and at its mouth is the famous Thunder Cape, a massive promontory lying like a giant asleep. Many legends have been written about this striking natural feature. In the early days on the city site of Fort William were located the fort, stores and dwellings of the North-West Fur Company and this site was an important point in the fur trade of the West.



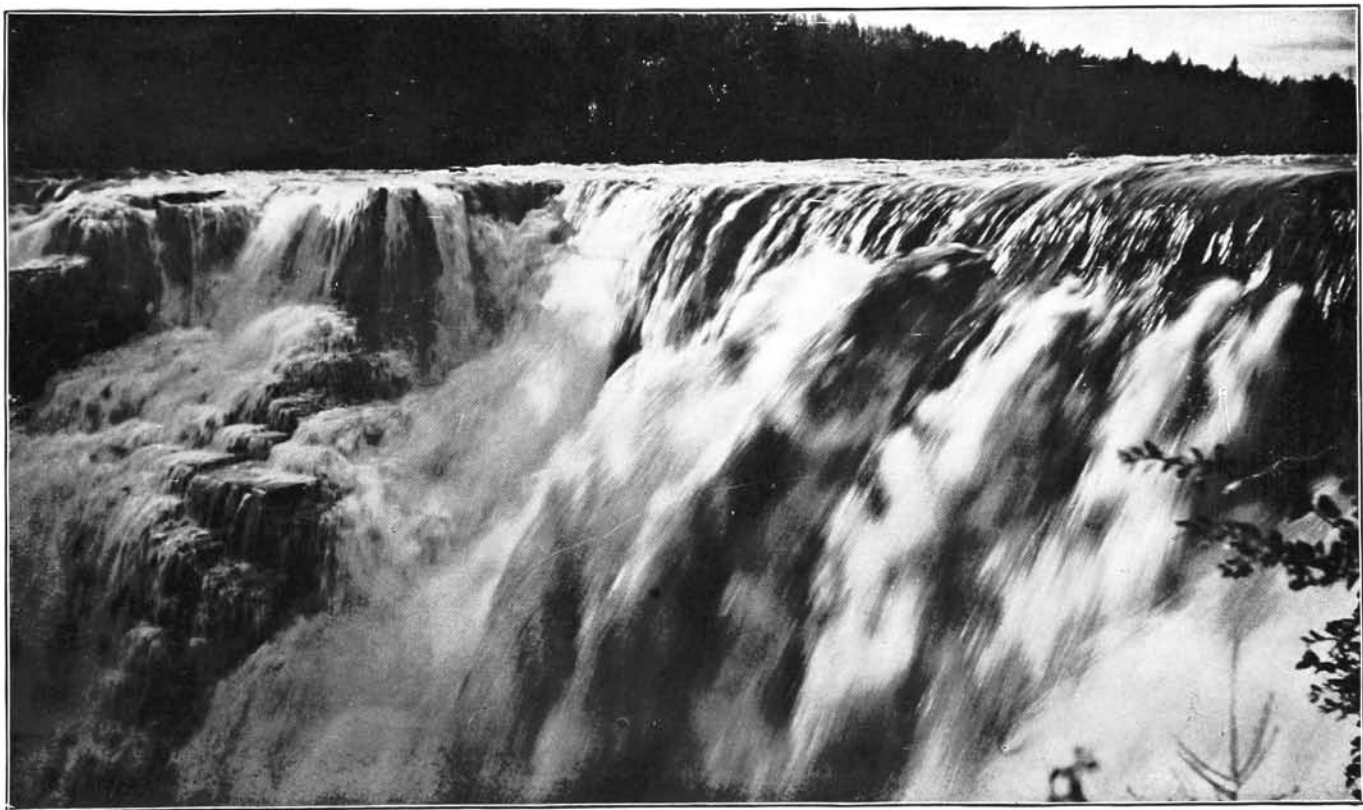
CITY HALL, FORT WILLIAM



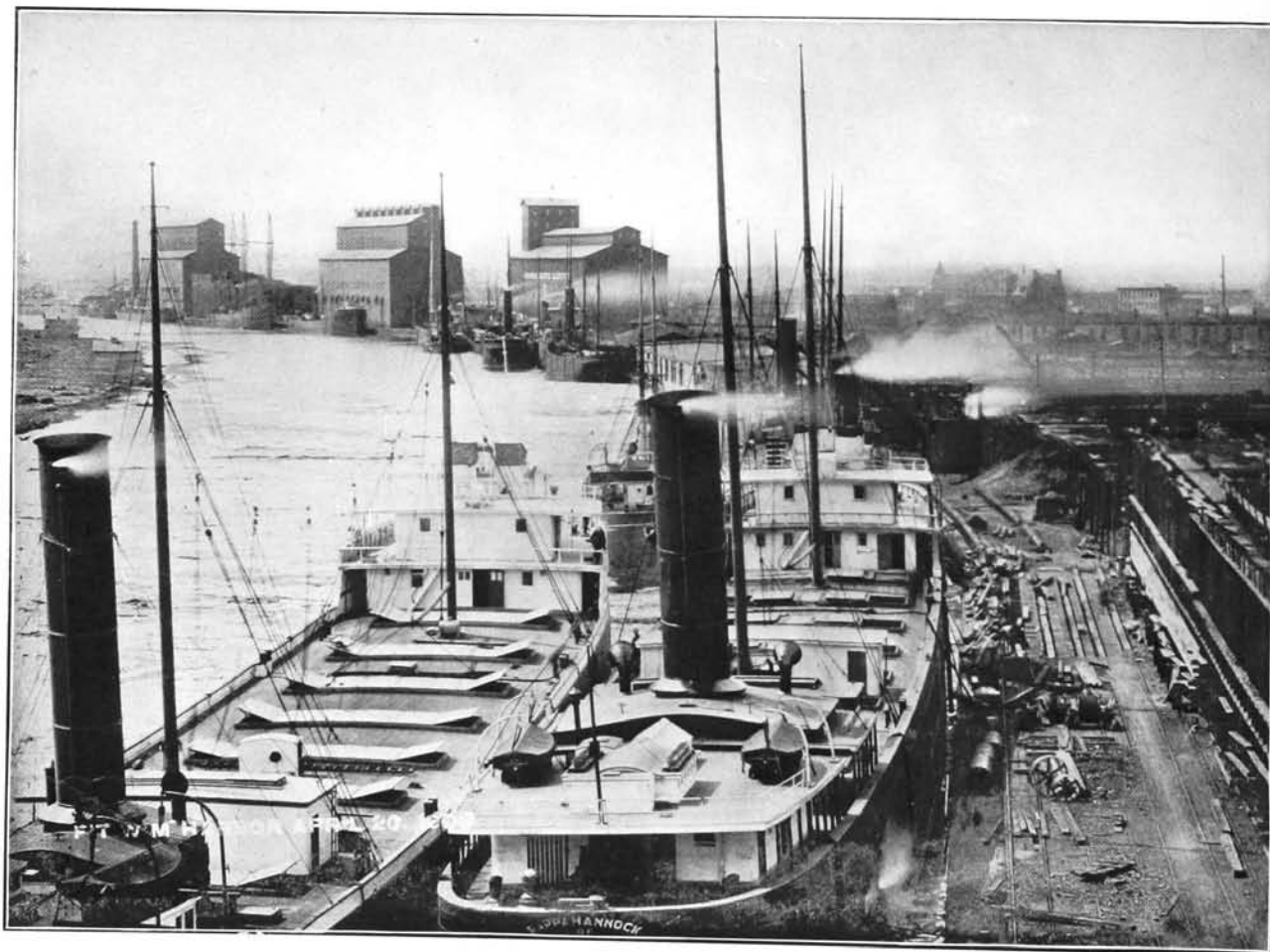
SIMPSON ST., FORT WILLIAM



C.P.R. YARDS AT FORT WILLIAM



KAKABEKA FALLS



FORT WILLIAM HARBOR, SHOWING ELEVATORS



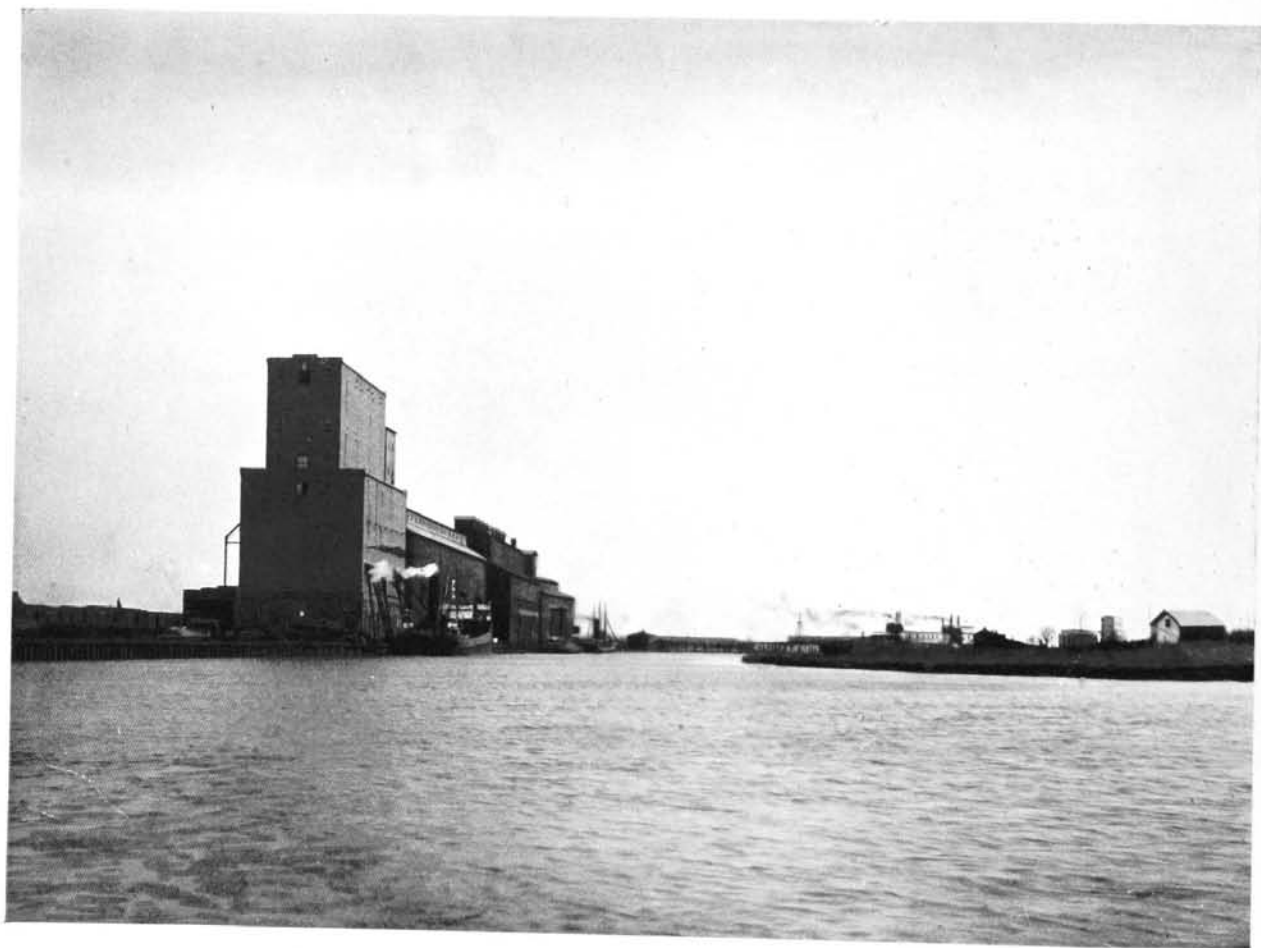
FAMOUS THUNDER CAPE, NEAR THE TWIN CITIES



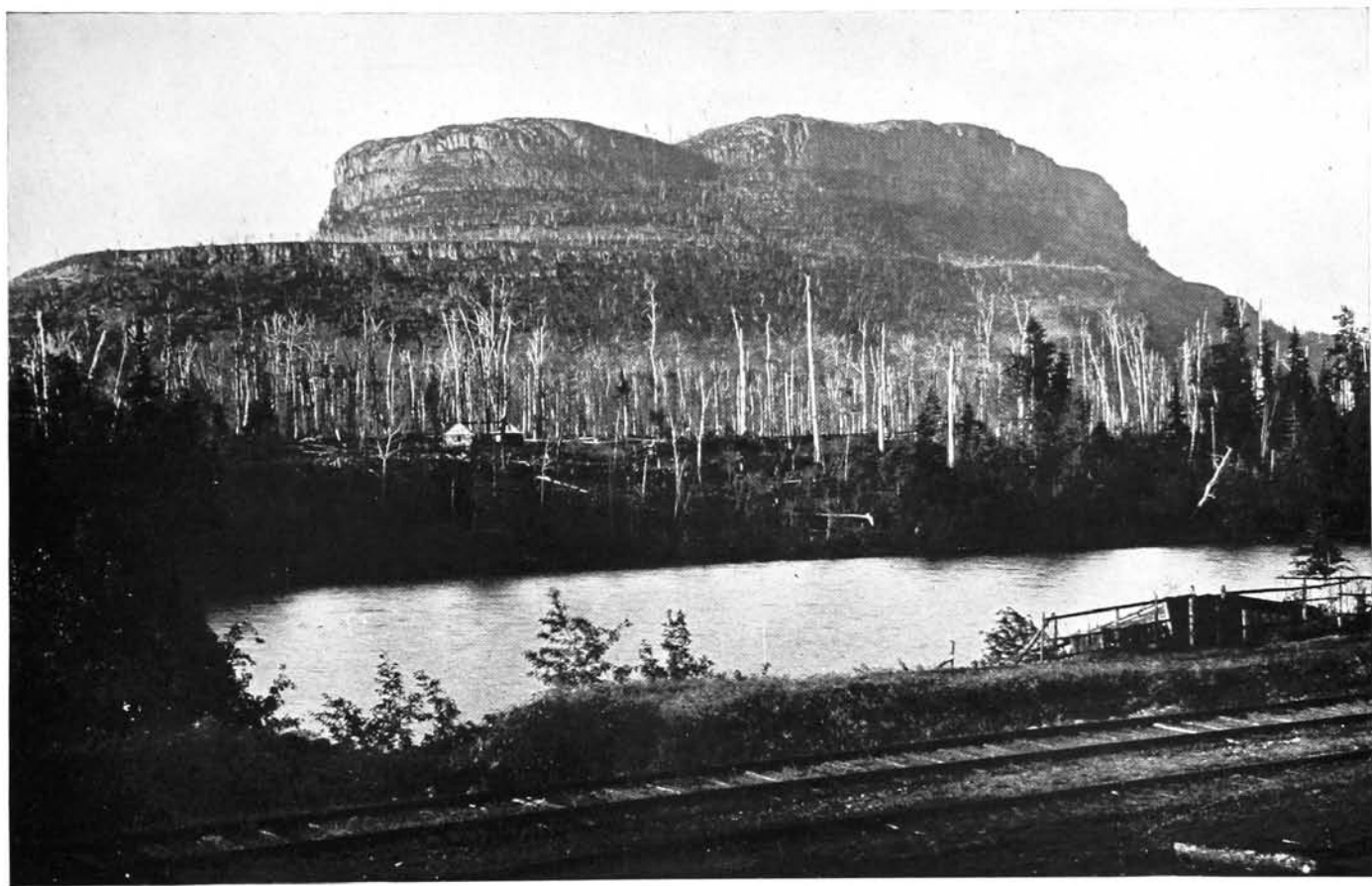
VICTORIA AVENUE, FORT WILLIAM



POST OFFICE, FORT WILLIAM



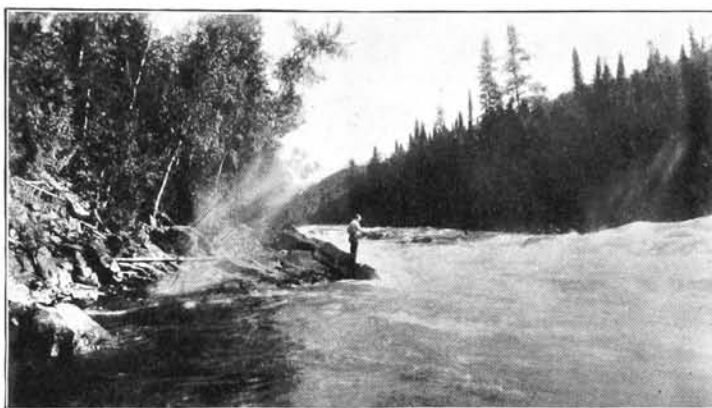
VIEW FROM THE MOUTH OF KAMINISTQUIA RIVER, FORT WILLIAM



MOUNT MCKAY



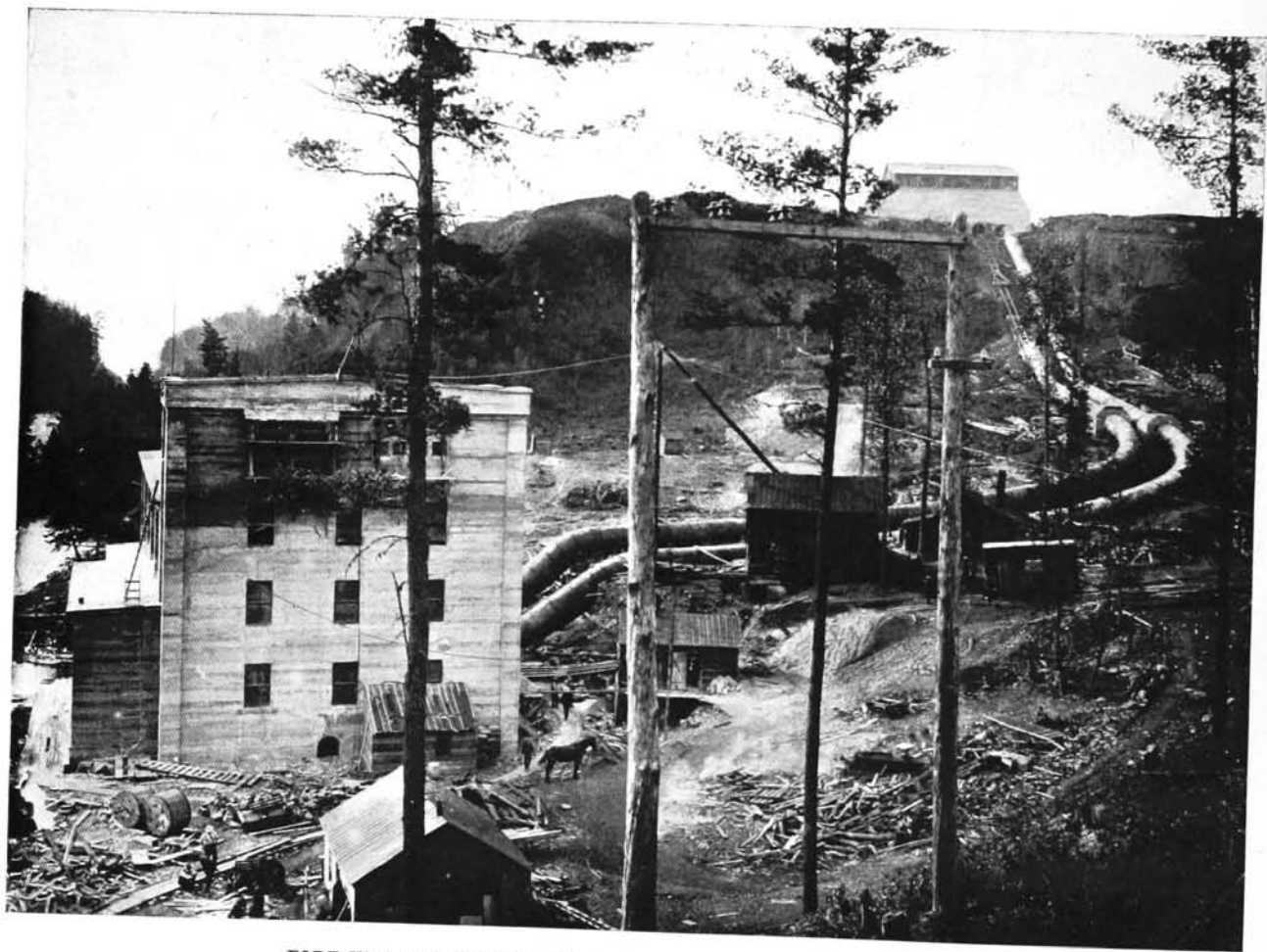
FAMOUS KAKABEKA FALLS AND GORGE, NEAR FORT WILLIAM



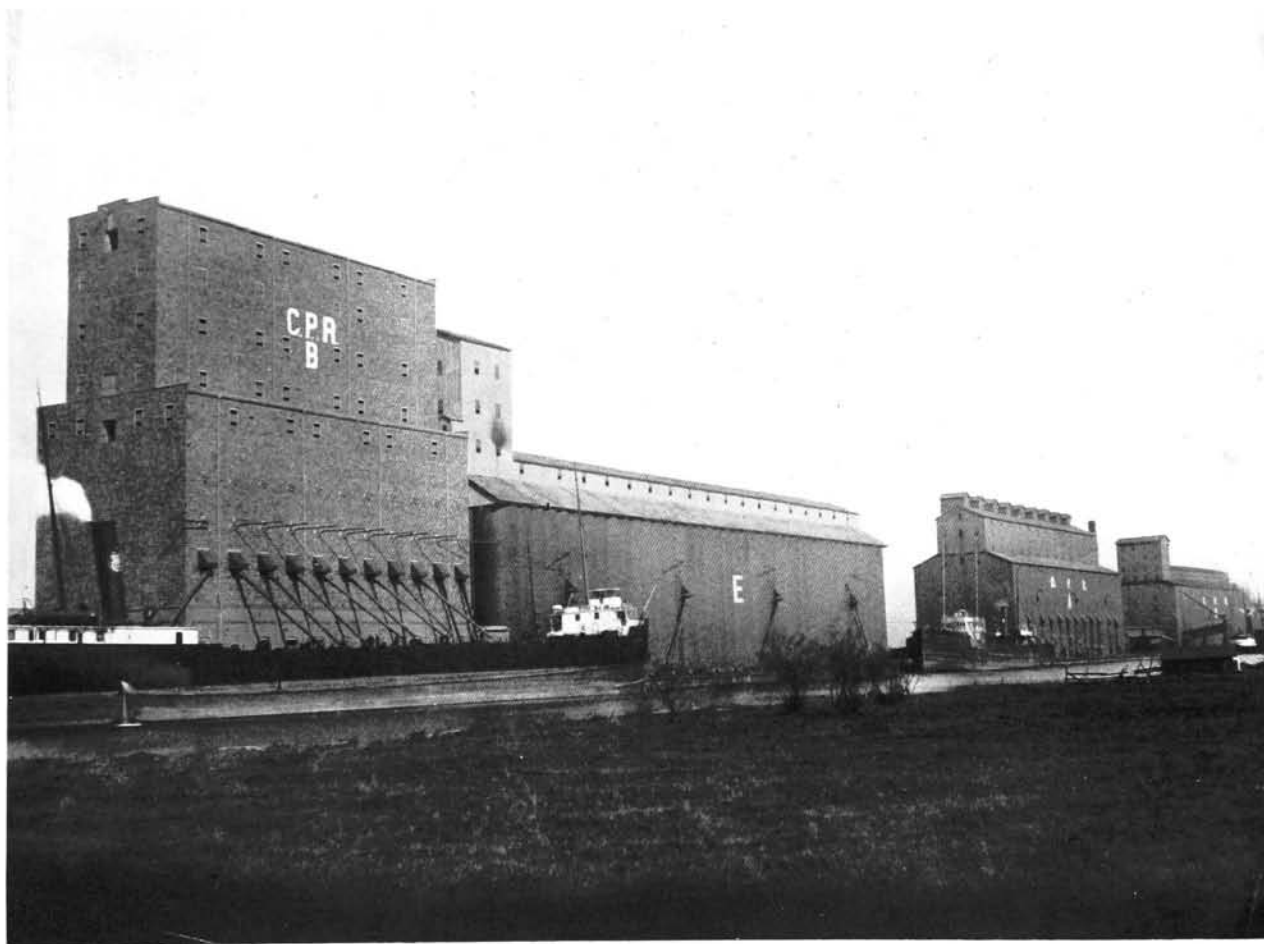
ON THE NEPIGON

Before Breakfast at Nepigon

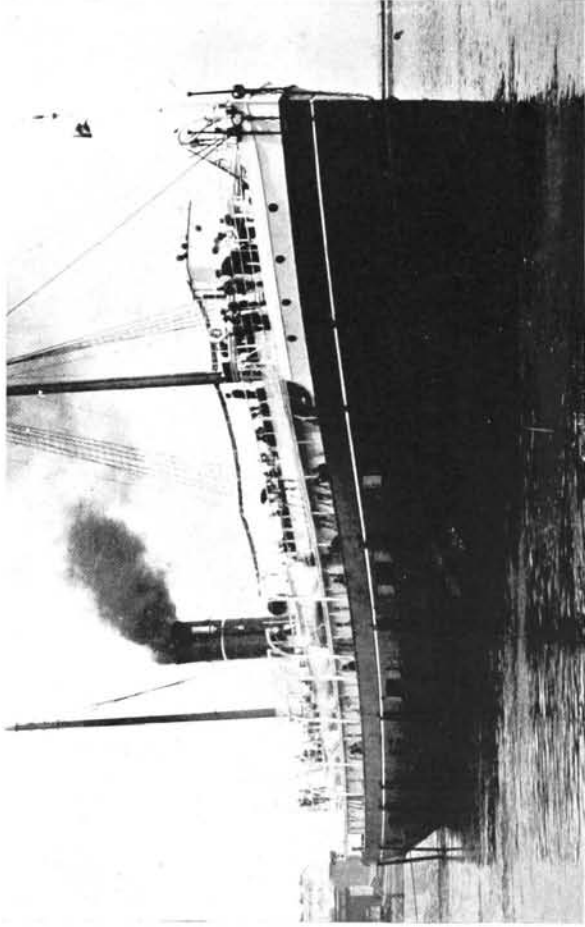
At Split Rock Rapids of Nepigon



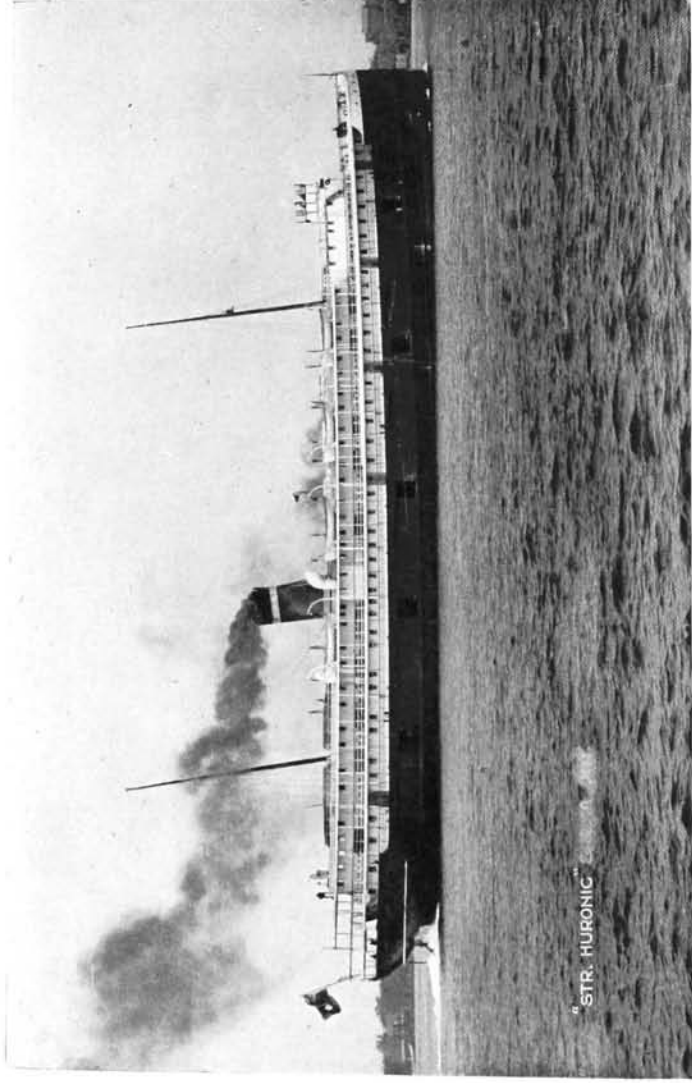
FORT WILLIAM ELECTRICAL POWER PLANT, KAKABEKA FALLS



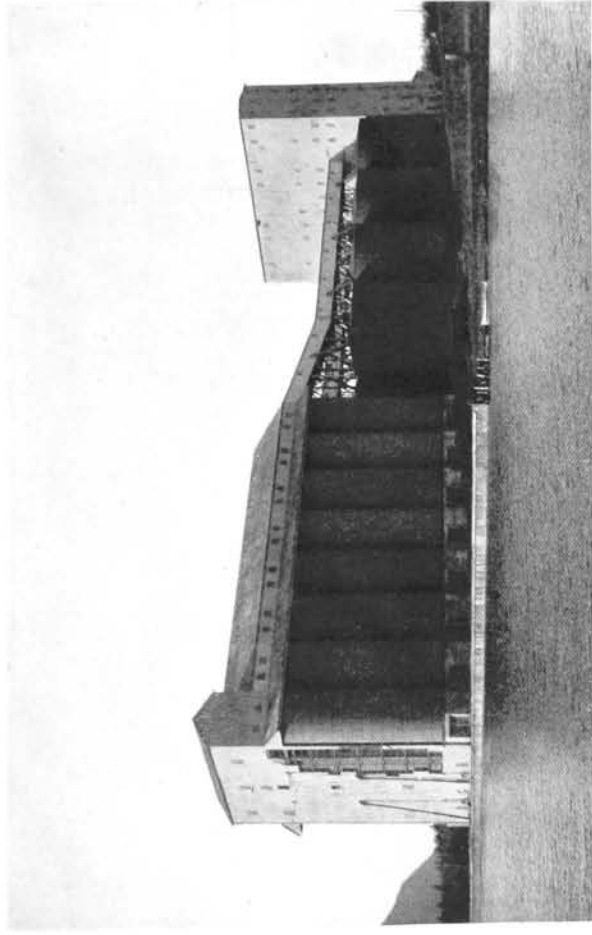
C.P.R. ELEVATORS, FORT WILLIAM



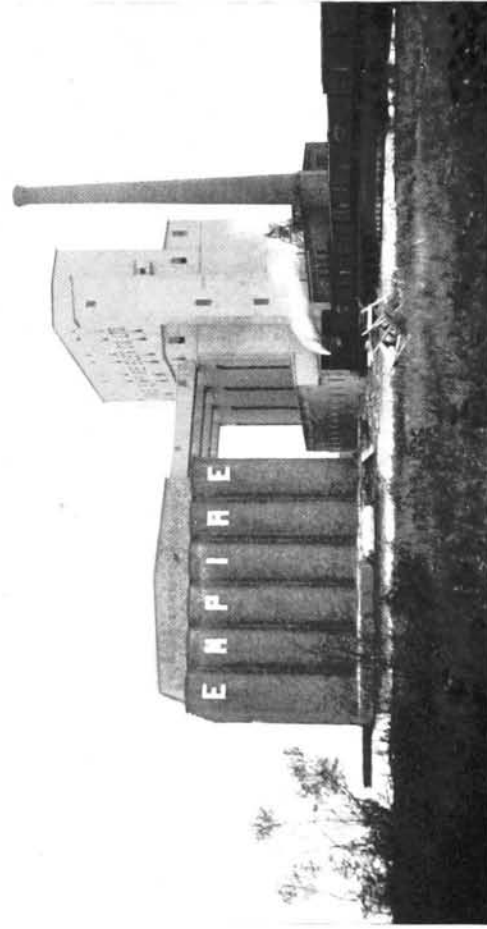
STEAMER "ATHABASCA"



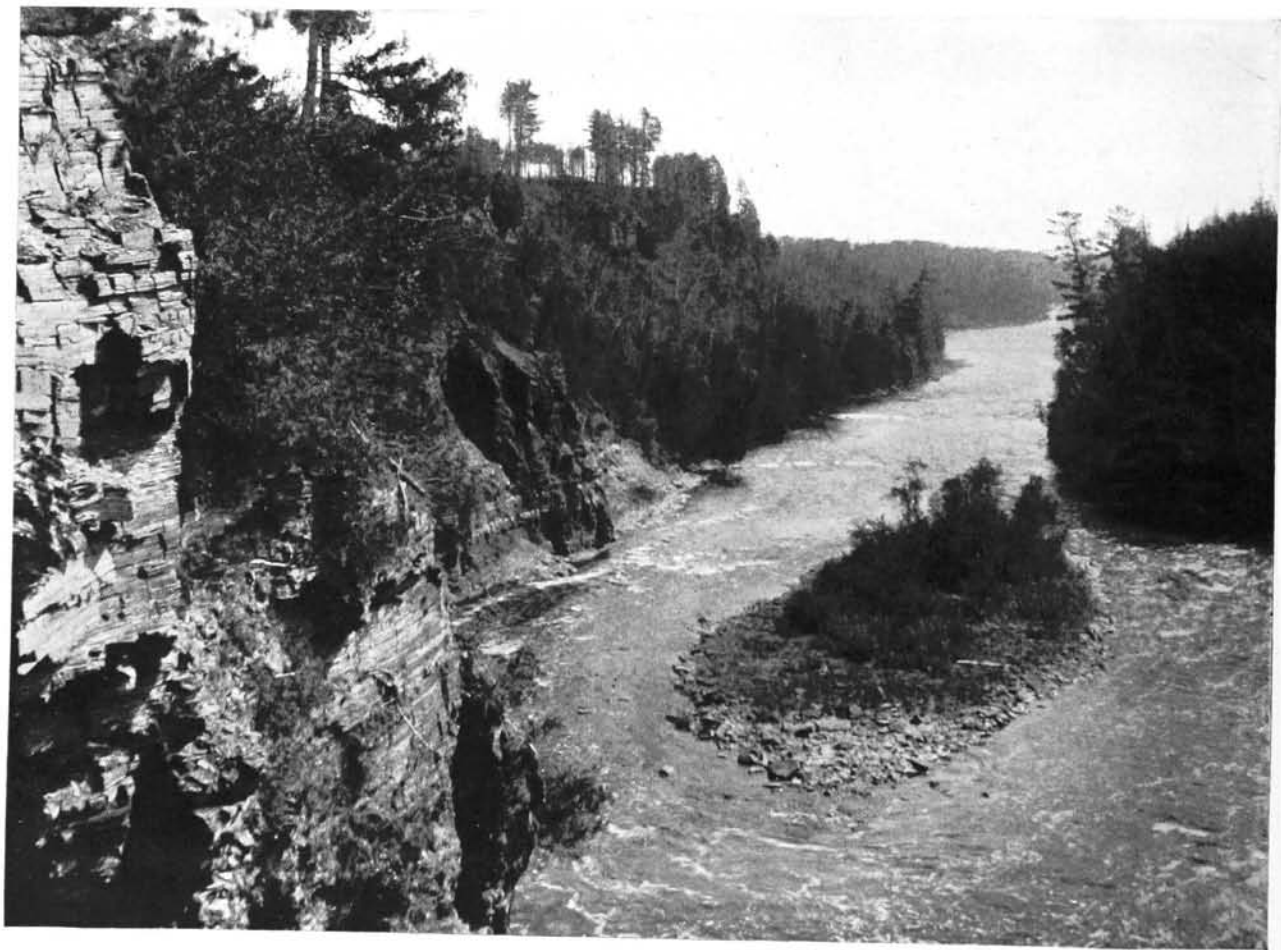
STEAMER "HURON"



C.P.R. ELEVATOR 'D' FORT WILLIAM



EMPIRE ELEVATOR, FORT WILLIAM



KAMINISTQUIA RIVER, BELOW KAKABEKA FALLS



THE GORGE, KAKABEKA FALLS



EMPIRE HOTEL, FORT WILLIAM



PANORAMIC V



PANORAMIC VIEW OF FORT WILLIAM



PANORAMIC VIEW OF PORT ARTHUR



PORT ARTHUR

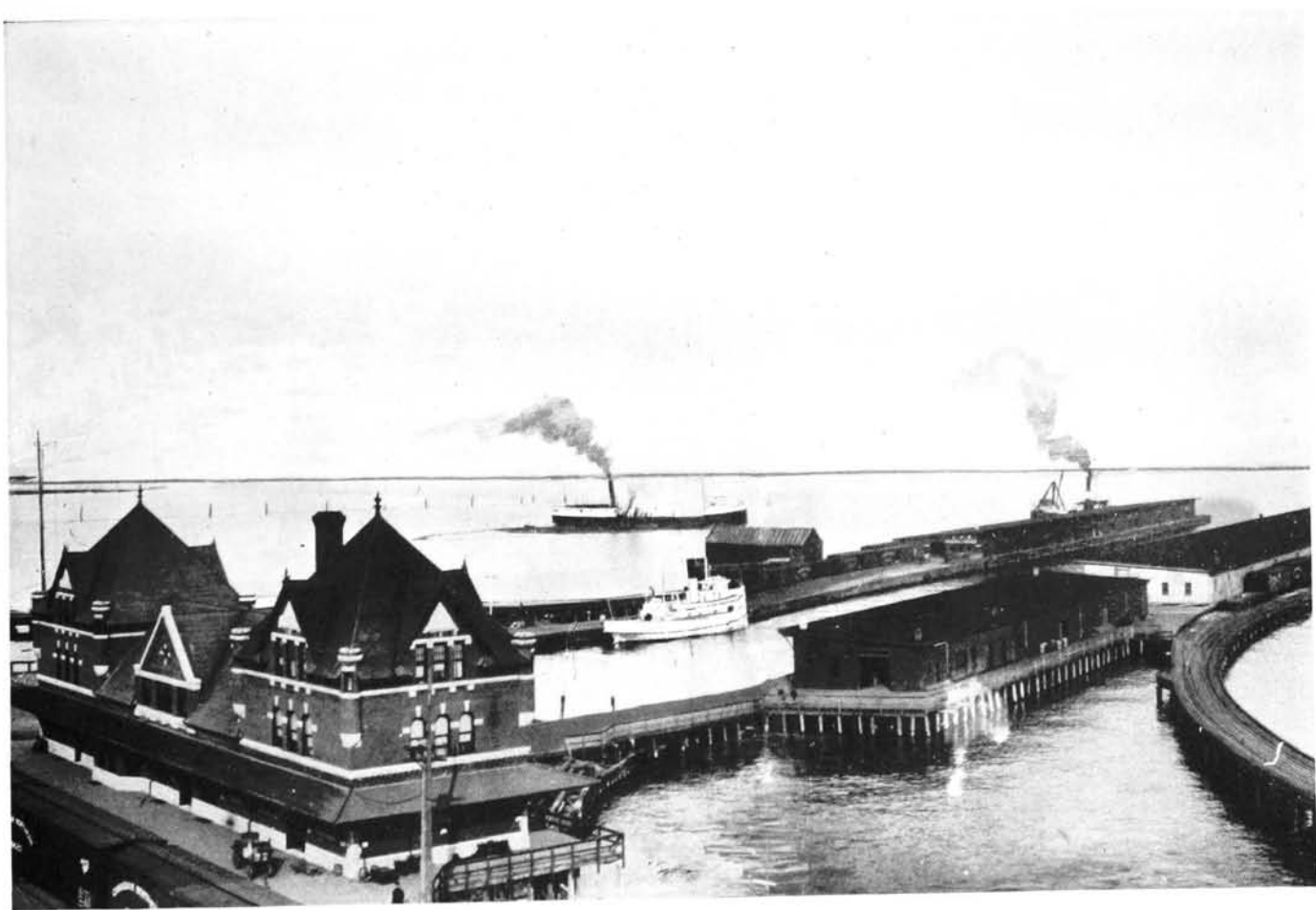


PORT ARTHUR is a city of about 12,000 people situated on Thunder Bay at the head of Lake Superior. It and the adjoining city of Fort William, five miles distant, form a prosperous community. Port Arthur is the Upper Lake terminus of the Canadian Northern Railway and promises to be one of the great grain shipping points of the Great Lakes. The Canadian Northern Railway here has a mammoth elevator having a capacity of 7,500,000 bushels.

Another elevator here is the King's elevator, which further increases the elevator capacity of this port. Port Arthur is built on high ground on the shores of Thunder Bay and to the Northward rises the magnificent promontory of Thunder Cape. Silver Islet, which is near Port Arthur, was a famous Silver Mine. It is now a summer resort for Port Arthur people. The Current River is in the vicinity of Port Arthur and is a spot of great scenic attractiveness, while the famous Nepigon is a wonderful salmon fishing stream. Port Arthur first became prominent during the construction of the Canadian Pacific Railway. It was then known as Arthur's Landing, but in the year 1883 it received its present name. The climate of Port Arthur is very salubrious, the air being remarkably clear, while the coolness of the summer temperature makes it a most desirable resort centre. Thunder Bay resembles very much in its appearance the famous Bay of Naples and everything unites to make this town a most desirable spot for tourists. Port Arthur is the terminus of half a dozen steamship lines, most prominent being the lines of the Northern Navigation Company and the C.P.R. steamship lines.



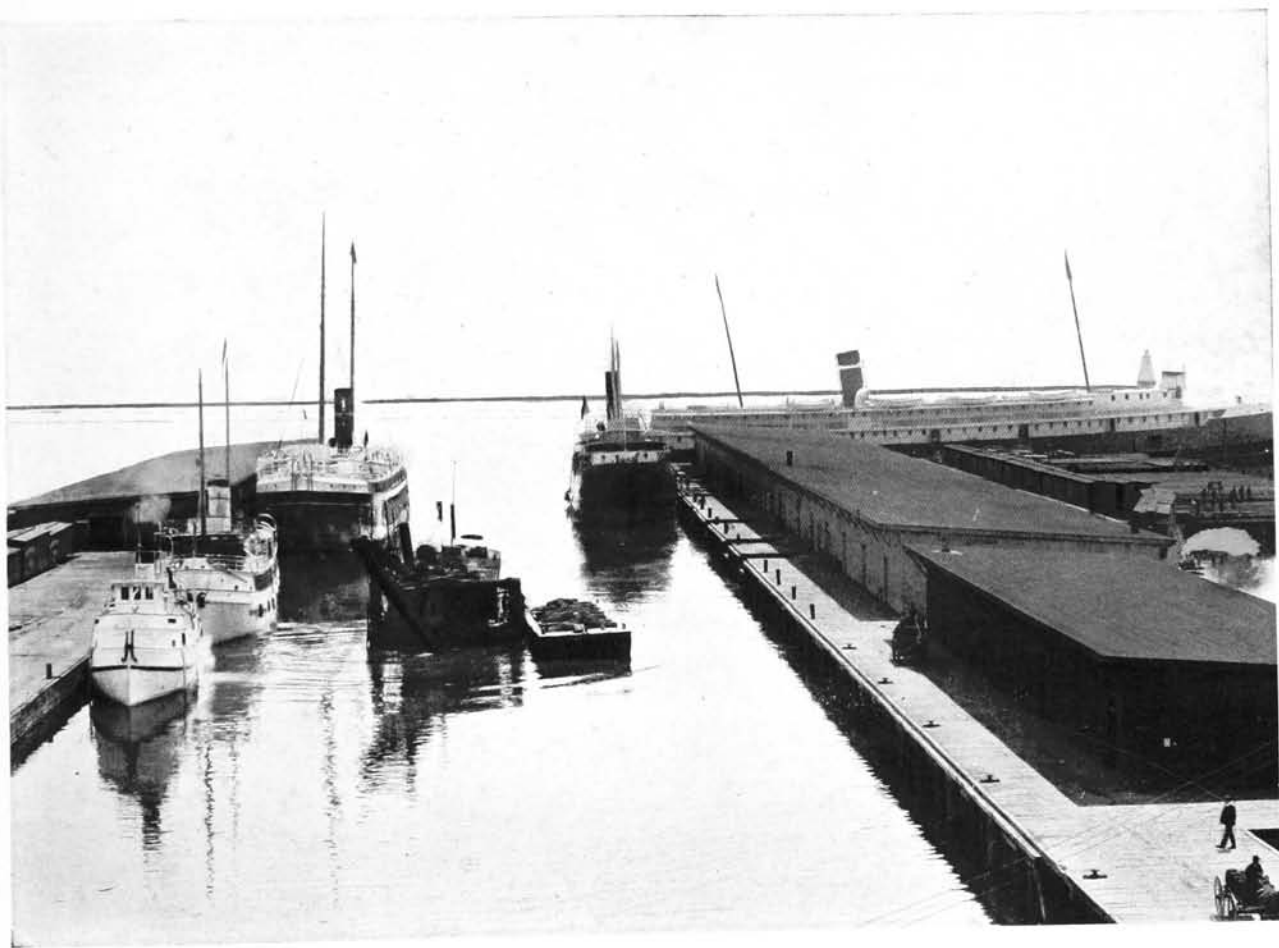
CUMBERLAND STREET, PORT ARTHUR



CANADIAN NORTHERN RAILWAY DEPOT AND TERMINALS, PORT ARTHUR



PORT ARTHUR, FROM THE HILL LOOKING INTO THE HARBOR



CANADIAN NORTHERN RAILWAY DOCKS, PORT ARTHUR



POST OFFICE, PORT ARTHUR



MARIAGGI HOTEL, PORT ARTHUR



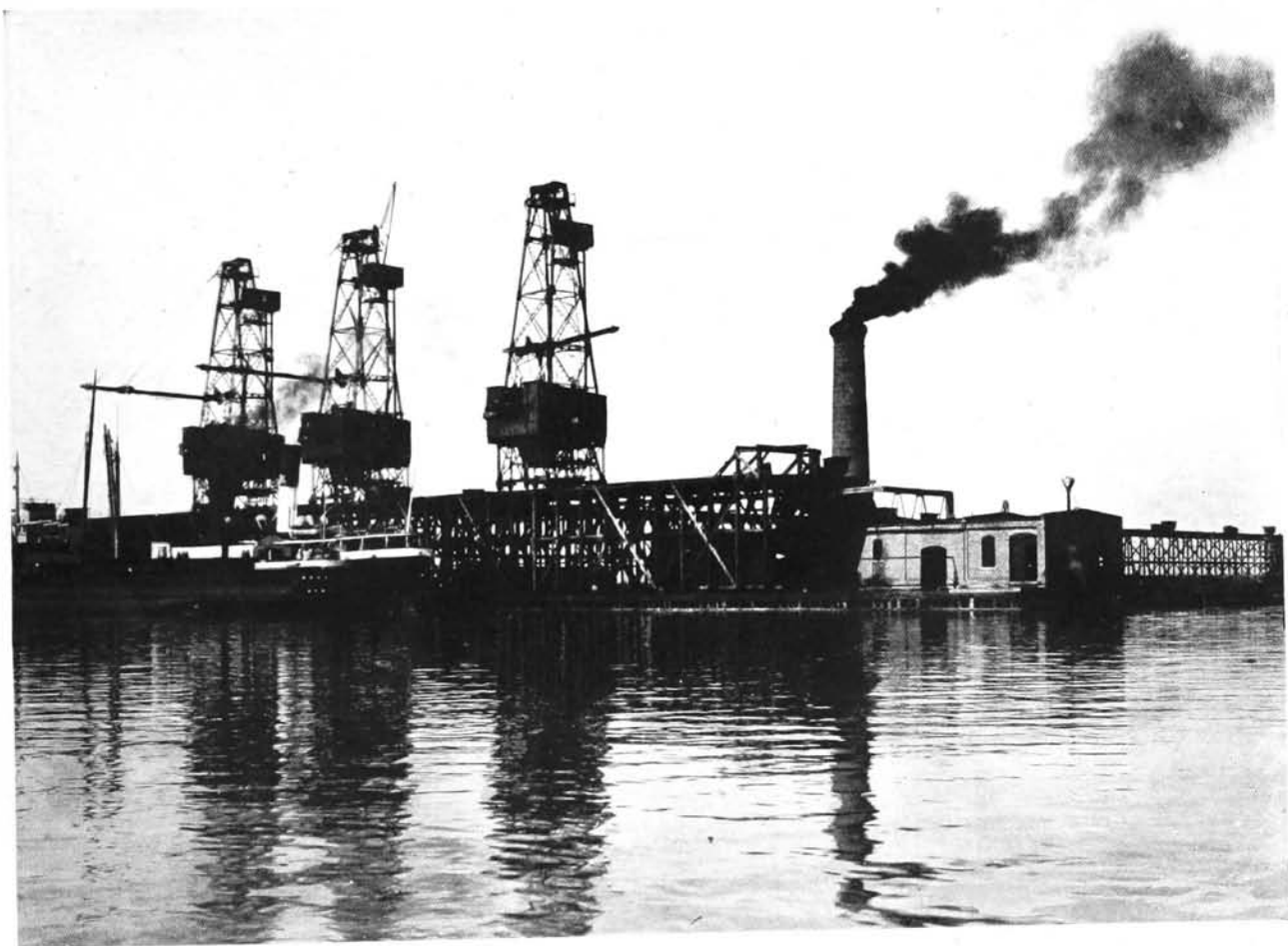
KING'S PARK, PORT ARTHUR



FALLS IN CURRENT RIVER PARK



CANADIAN NORTHERN ELEVATOR, PORT ARTHUR
Capacity 7,000,000 Bushels



COAL DOCKS, PORT ARTHUR



THE CANADIAN BANK OF COMMERCE, PORT ARTHUR



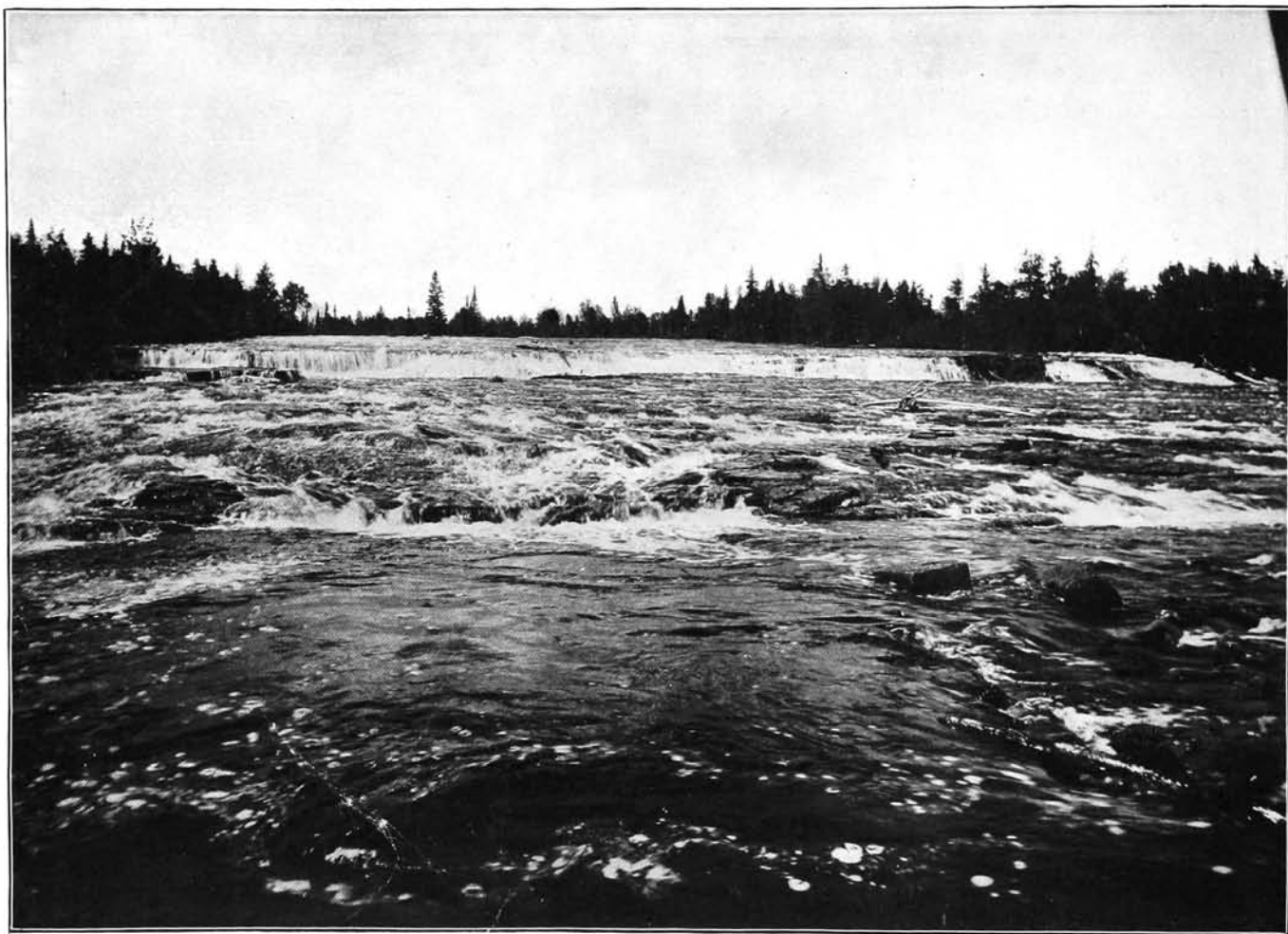
ST. JOSEPH'S HOSPITAL, PORT ARTHUR



ICE-BREAKER, TUG "JAMES WHALEN"



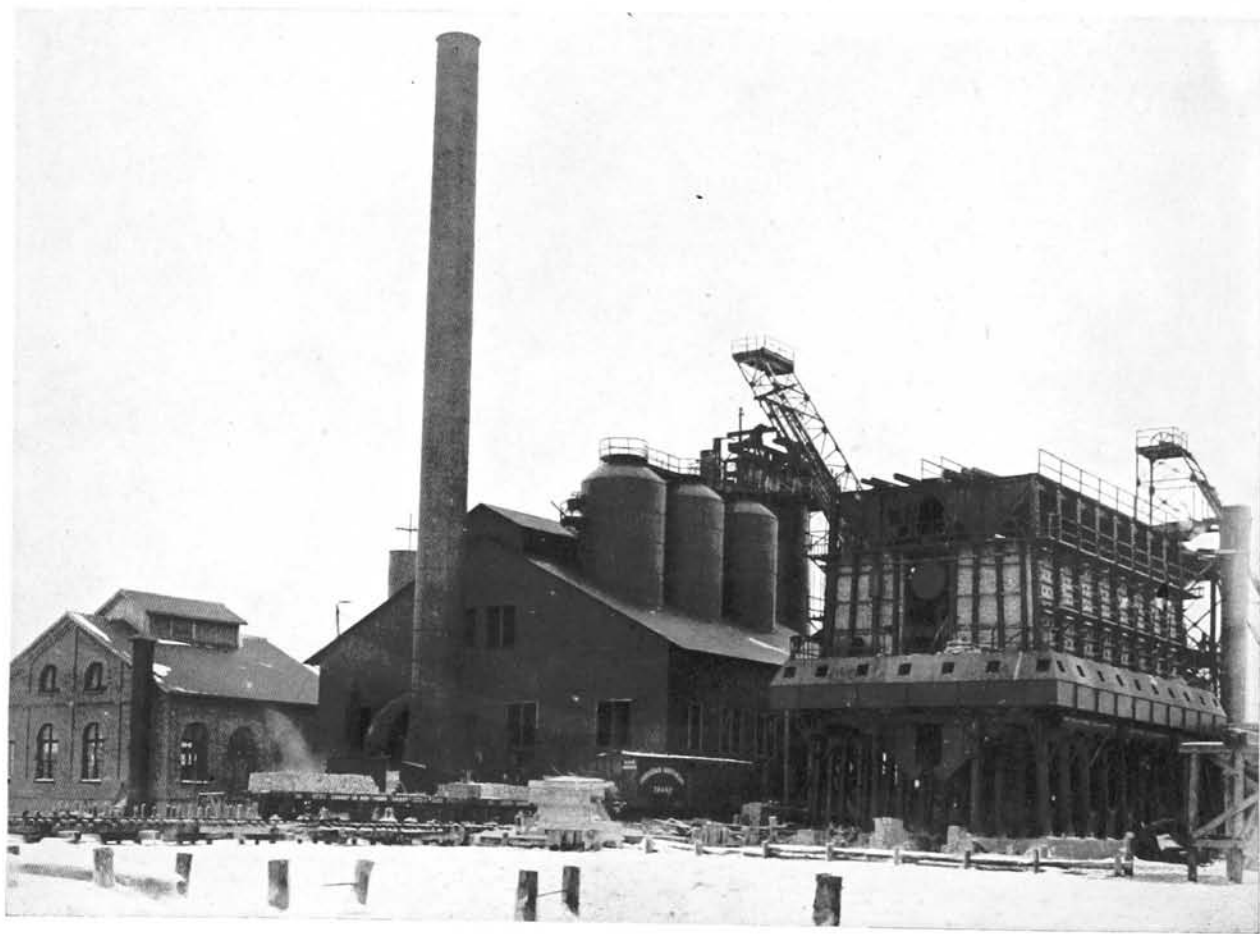
STEAMER "AMERICA"—PORT ARTHUR TO DULUTH



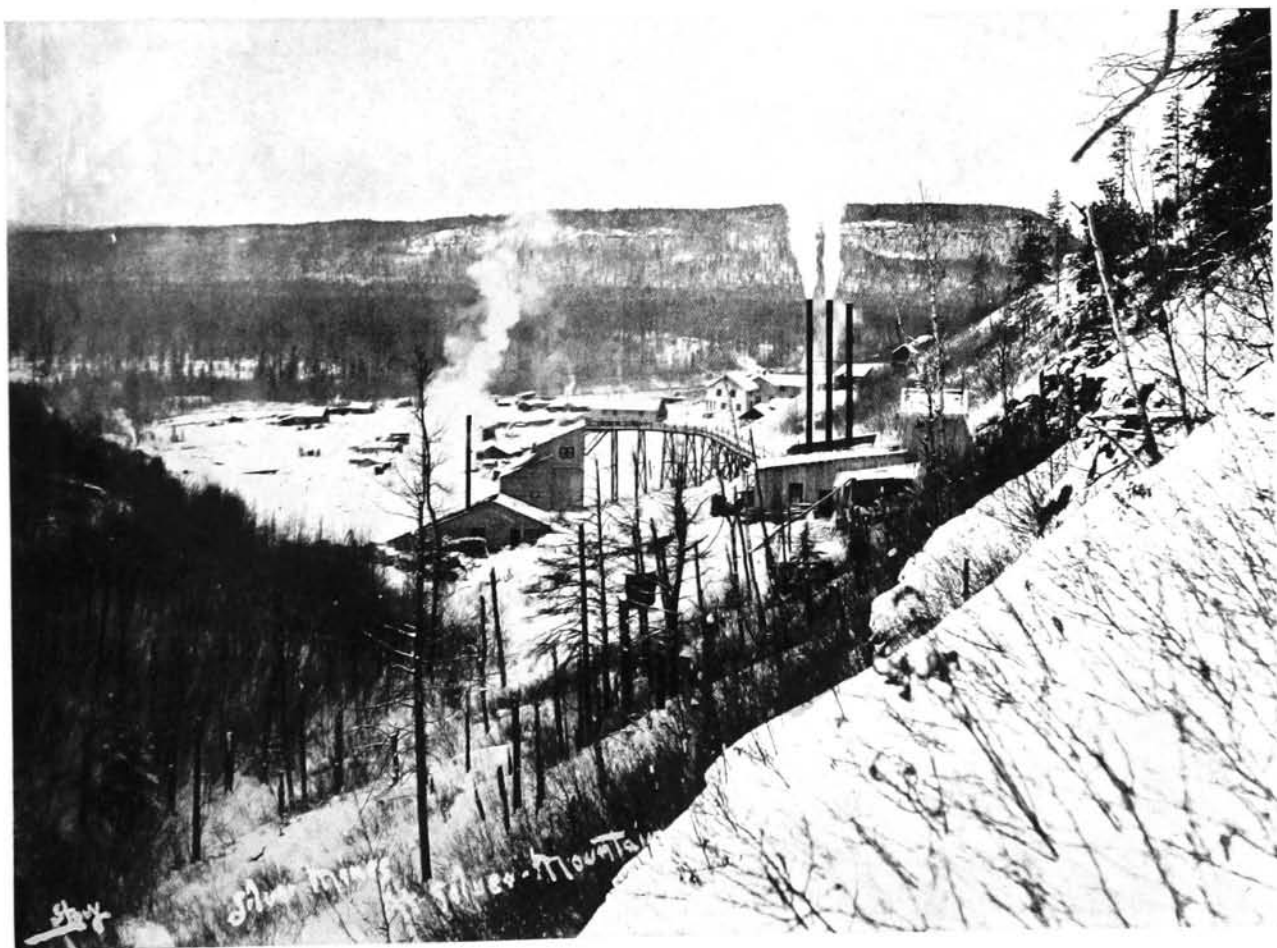
CURRENT RIVER FALLS



PIGEON RIVER LUMBER CO.



ATIKOKAN IRON COMPANY'S WORKS



SILVER MINES, PORT ARTHUR



DAWSON AVENUE, PORT ARTHUR



LAKE SHORE, SUMMER SEASON, PORT ARTHUR



ST. JOHN'S CHURCH (CHURCH OF ENGLAND)
ST. PAUL'S PRESBYTERIAN CHURCH



CONSTRUCTION NEW C.N.R. COAL DOCKS, PORT ARTHUR
Capacity 2,000,000 Tons



FALLS AND POWER HOUSE, CURRENT RIVER PARK



PART OF INTERIOR C.N.R. ELEVATOR, LARGEST IN THE WORLD
Capacity 7,500,000 Bushels

