

NEW  
ALBUM  
OF  
QUEBEC  
VIEWS

917.1447.N2656



E 0811



LAST OF THE HURONS.



CITADEL & TERRACE.





DUFFERIN TERRACE & LOWER TOWN.



QUEBEC FROM LEVIS.





POINT LEVIS FROM QUEBEC.



ST. JOHN GATE.



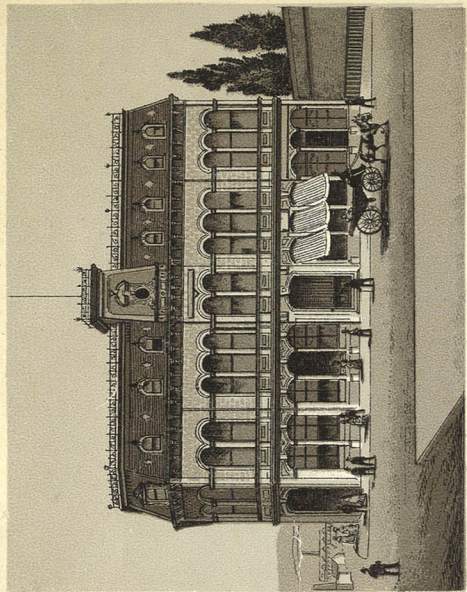


KENT GATE.

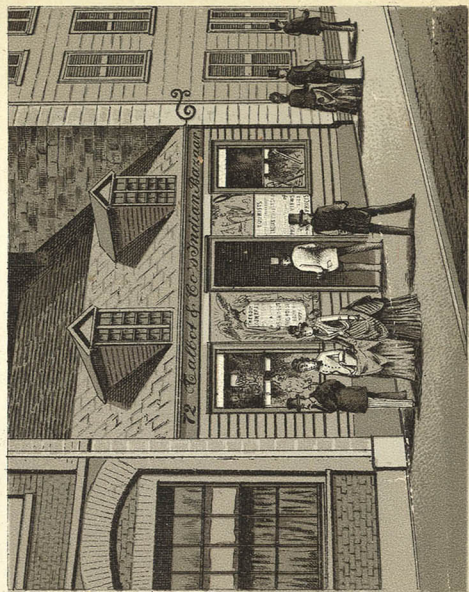


ST. LOUIS GATE.





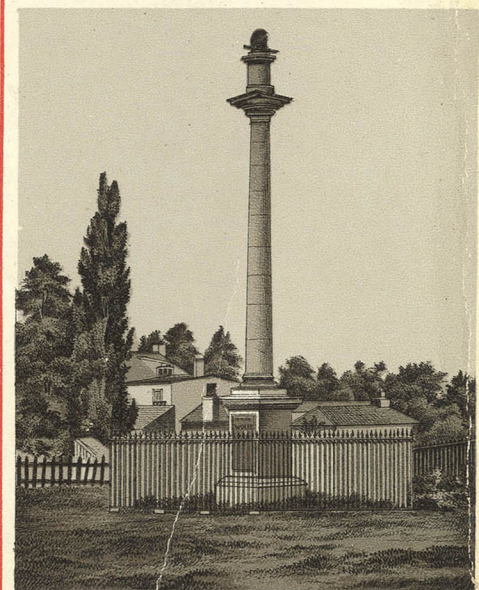
YOUNG MENS CHRISTIAN ASSOCIATION.



HOUSE WHERE THE BODY OF MONTGOMERY WAS DEPOSITE.



MONUMENT TO WOLFE & MONTCALM.

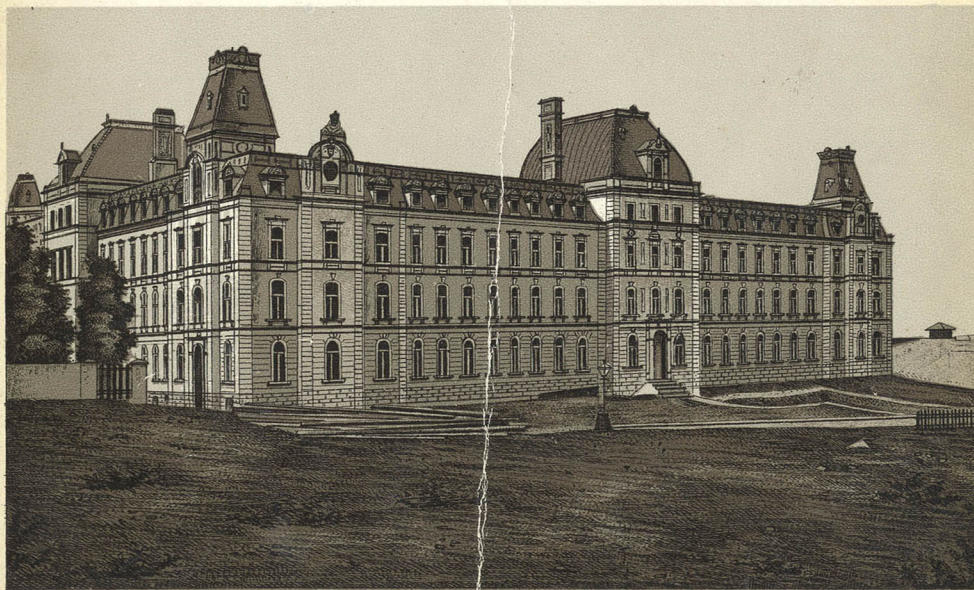


WOLFE MONUMENT.



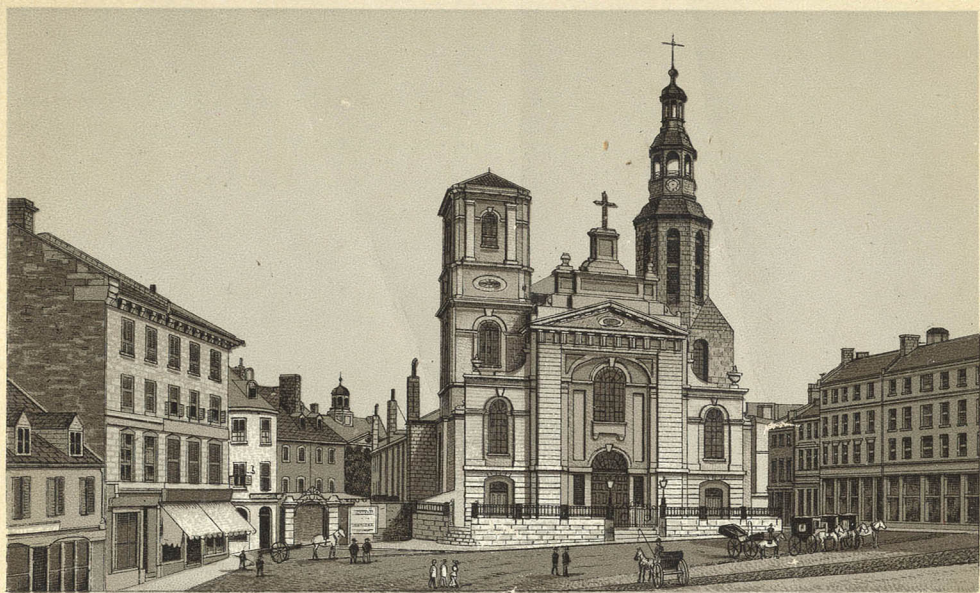


WOLFE MONUMENT & JAIL.

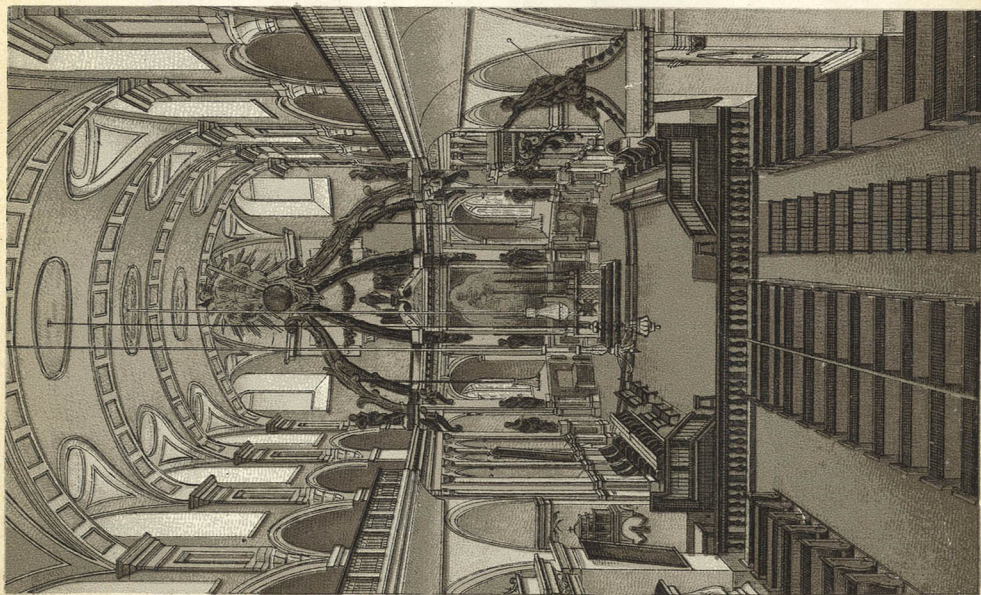


PARLIAMENT BUILDING.



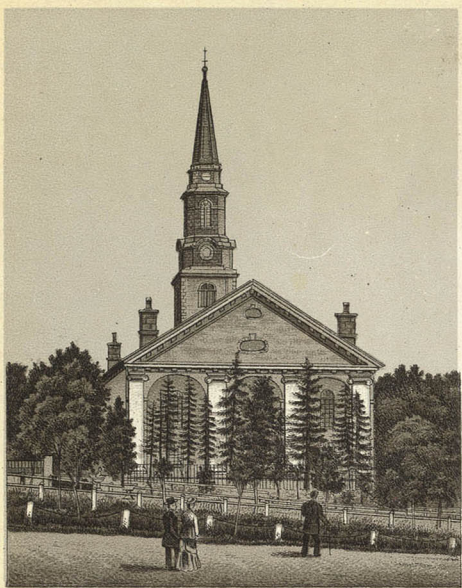


BASILICA MINOR.



INTERIOR OF BASILICA.

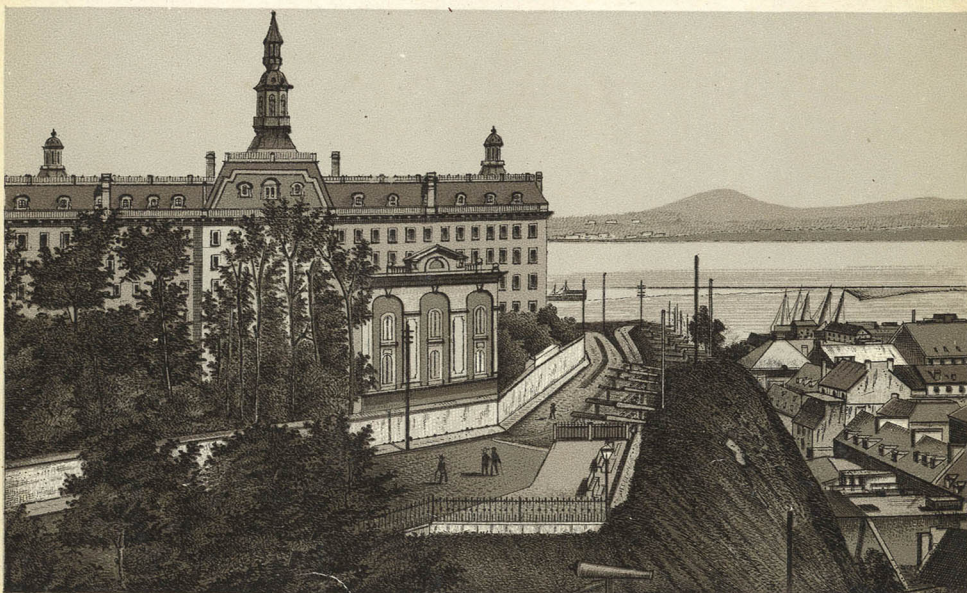




ENGLISH CATHEDRAL.



CHAMPLAIN STEPS.



GRAND BATTERY & LAVAL UNIVERSITY.





INTERIOR ST. PATRICK CHURCH.



CITADEL FROM THE ICE BRIDGE.





CHAMPLAIN MARKET.

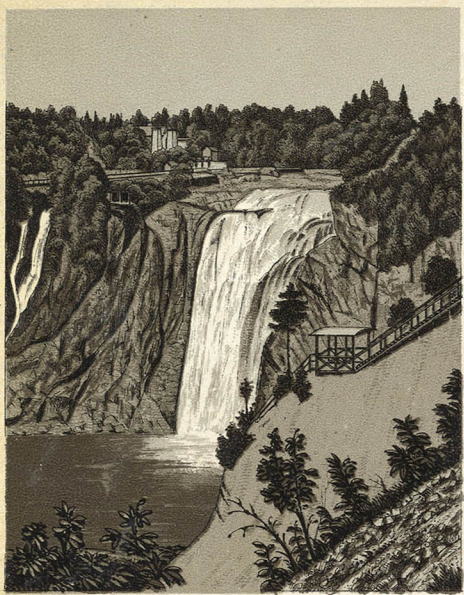


NATUREL STEPS MONTMORENCY RIVER.

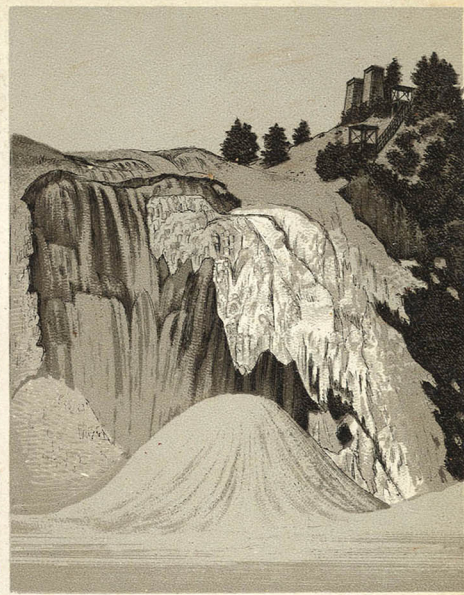


CHAUDIÈRE FALLS.

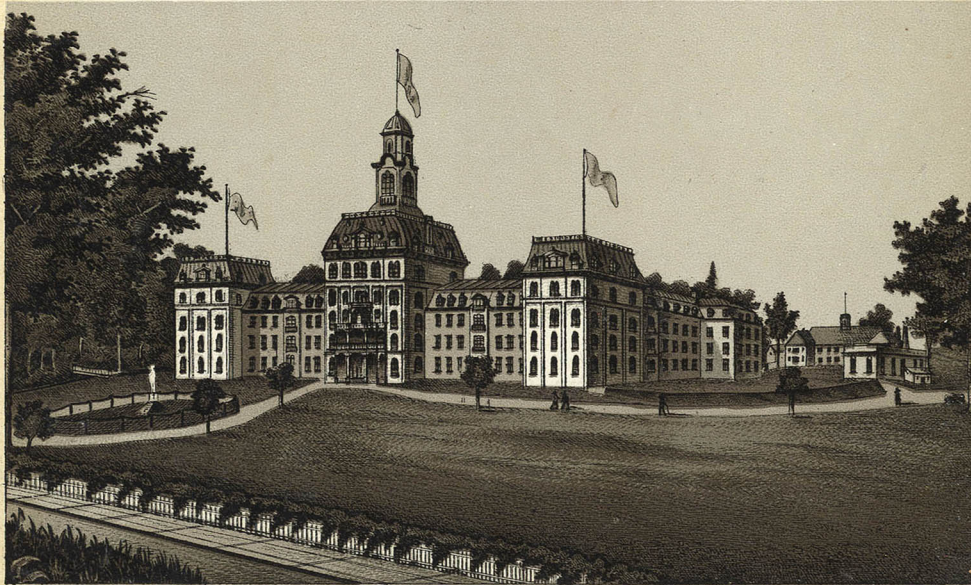




FALL OF MONTMORENCY, SUMMER.



FALL OF MONTMORENCY, WINTER.

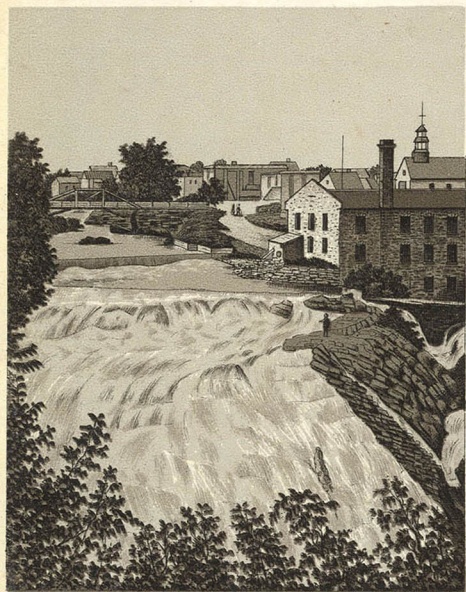


LUNATIC ASYLUM, BEAUPORT.

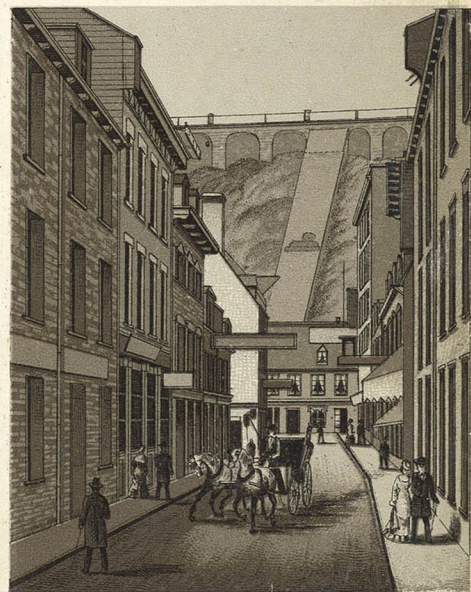




HARBOR QUEBEC.



LORETTE FALLS.



ELEVATOR.



METROPOLITAN  
TORONTO  
LIBRARY

Canadian  
HISTORY

789  
YONGE  
TORONTO  
M4W 2G8

917.1447.N2G5G

