

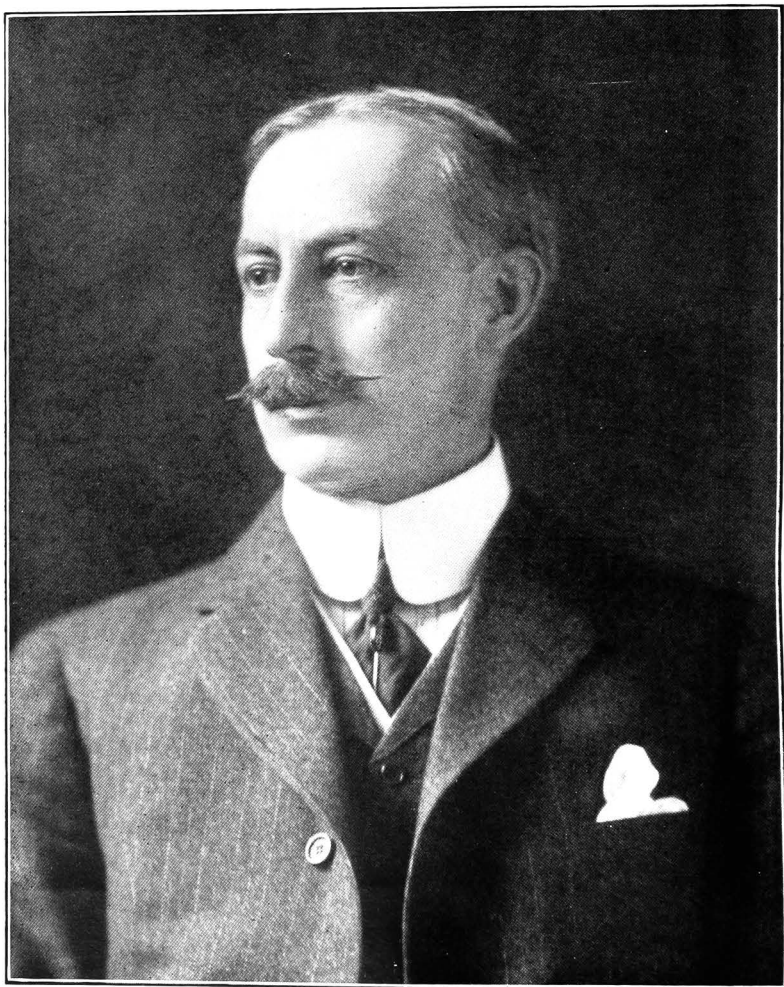
Toronto Public Library



**TWENTY - EIGHTH
ANNUAL REPORT
1911**

CONTENTS.

List of Members and Officers of the Board of Management.....	3
List of Libraries and Hours of Service	4
Report of Chairman of the Board	5
Report of Chief Librarian	11
Reports from Departments:—	
The Reference Department	15
The Children's Department	16
The Cataloguing Department	17
The Accessioning Department	18
The Registration Department	20
The Book-binding Department	20
Statistical Returns	21-28
Number and Classification of Books	29
Additions and Deductions during year	30
Classified List of New Books	31
Financial Statements	32-33
List of Donations	34-36
List of Periodicals	37-52



NORMAN B. GASH, K. C.
Chairman of Library Board, 1911.

TORONTO PUBLIC LIBRARY

TWENTY-EIGHTH
ANNUAL REPORT
FOR THE YEAR
1911



THE ARMAC PRESS, LIMITED
TORONTO

BOARD OF MANAGEMENT

NORMAN B. GASH, K.C., Chairman.

His Worship MAYOR GEARY

HON. SIR GLENHOLME FALCONBRIDGE

W. T. J. LEE

T. W. SELF

T. W. BANTON

A. E. HUESTIS

MR. JUSTICE KELLY

JOHN TURNBULL

LIBRARIES AND FINANCE COMMITTEE

JOHN TURNBULL, Chairman.

His Worship MAYOR GEARY

W. T. J. LEE

HON. SIR GLENHOLME FALCONBRIDGE

A. E. HUESTIS

MR. JUSTICE KELLY

T. W. SELF

N. B. GASH, K. C.

T. W. BANTON

The general management, regulation, and control of the Toronto Public Library are vested in a Board called the Board of Management, and composed of the Mayor of the City, three persons appointed by the City Council, three persons appointed by the Public School Board, or Board of Education, and two persons by the Trustees of the Separate School Board. The representatives from the City Council and Board of Education hold office for three years, and those from the Separate School Board for two years, the representatives retiring in rotation at the end of their respective terms on the 31st of January.

CHIEF LIBRARIAN

GEORGE H. LOCKE, M.A.

ASSISTANT LIBRARIAN AND SECRETARY-TREASURER

EDWARD S. CASWELL

REFERENCE LIBRARY.

Cor. College and St. George streets. Open 10 a.m. to 9.30 p.m.

CENTRAL LIBRARY.

Cor. Church and Adelaide streets. Circulating Library open 9 a.m. to 8.30 p.m. Reading-room, from 9 a.m. to 9.30 p.m.

COLLEGE STREET BRANCH.

In Reference Library building (lower flat). Circulating Library, 9 a.m. to 8.30 p.m. Reading-room, 9 a.m. to 9 p.m. Children's room, 9 a.m. to 7.30 p.m.

YORKVILLE BRANCH.

Yorkville Ave., north side, near Yonge Street. Circulating Library, 9 a.m. to 8.30 p.m. Reading-room, 9 a.m. to 9 p.m. Children's room, 9 a.m. to 7.30 p.m.

RIVERDALE BRANCH.

Cor. Broadview Ave. and Gerrard Street. Circulating Library, 10 a.m. to 8.30 p.m. Reading-room, 10 a.m. to 9 p.m. Children's room, 10 a.m. to 7.30 p.m.

QUEEN AND LISGAR BRANCH

Cor. Queen and Lisgar streets. Circulating Library, 9 a.m. to 8.30 p.m. Reading-room, 9 a.m. to 9 p.m.

WESTERN BRANCH.

Annette Street, facing Medland Street. Circulating Library, 1.30 p.m. to 8.30 p.m. Reading-room, 1.30 p.m. to 9 p.m.

DEER PARK BRANCH.

At 1524 Yonge Street. Open Tuesdays, Thursdays and Saturdays, afternoon and evening, from 3 to 6 and from 7 to 9.

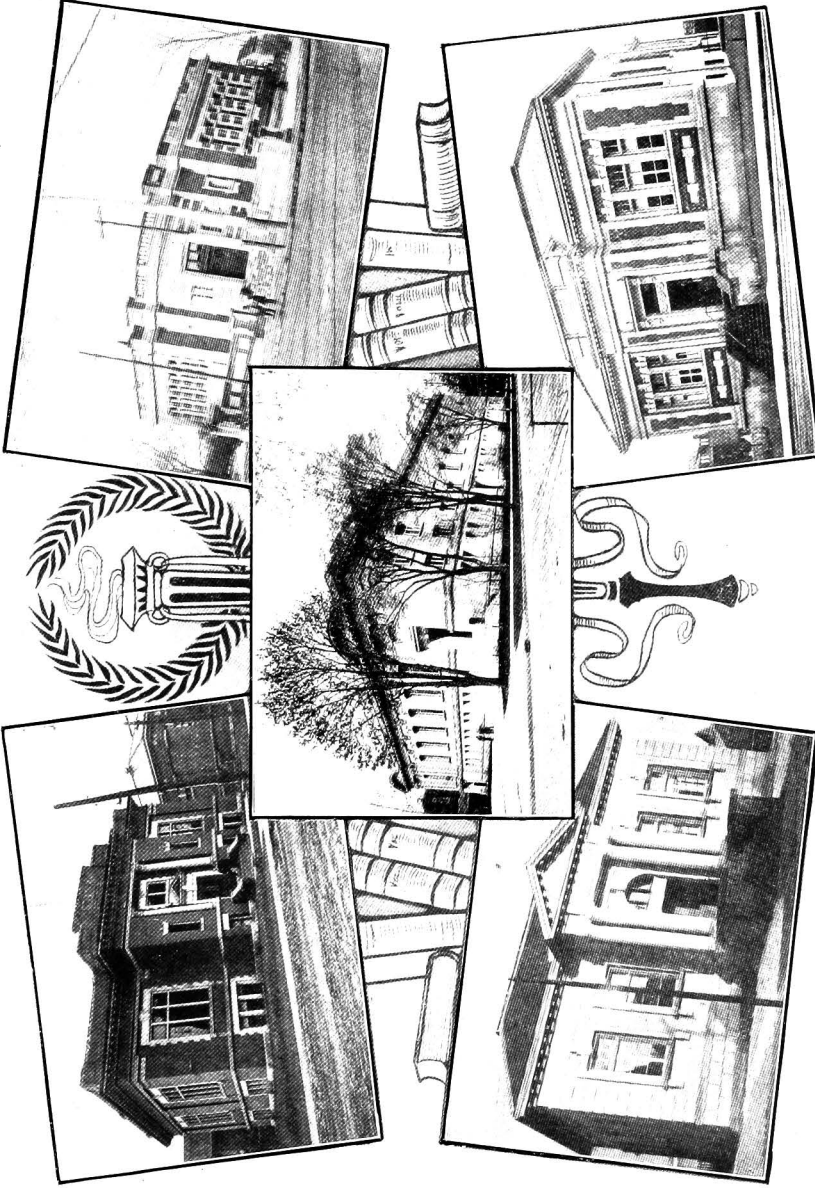
MUNICIPAL REFERENCE BRANCH.

In City Hall, second floor, north-east. Open 9 a.m. to 1 p.m. and 2 to 5 p.m. On Saturdays 9 a.m. to 1 p.m.

WYCHWOOD BRANCH.

In Hillcrest Public School, Bathurst street. (Opened Monday, Feb. 5, 1912). Hours, Monday afternoons from 2.30 to 5.30, and Fridays from 4 p.m. to 8.30 p.m.

All Libraries close at 8 p.m. on the third Tuesday of the month for the meetings of the Toronto Library Association.



Riverdale Branch
Queen and Lisgar Branch

Reference Library
TORONTO PUBLIC LIBRARY BUILDINGS
Erected through the generosity of Andrew Carnegie, Esq.

Western Branch
Yorkville Branch

TORONTO PUBLIC LIBRARY

REPORT OF THE CHAIRMAN OF THE PUBLIC LIBRARY BOARD FOR THE YEAR 1911.

GENTLEMEN :—

At the close of his official term it has become the time-honored custom, as well as the duty, of the retiring Chairman of this Board to deliver an annual address, briefly reviewing the progress and chief events of the year, and on the occasion of this, our 28th Annual Meeting, I am much gratified to be in a position to record that the year now brought to a close, during which I have had the honor and responsibilities of this position, has been especially marked with substantial expansion and development in every department of the work of this institution.

In particular, we have obtained from the City Council a largely increased grant towards the maintenance and extension of our Library facilities; new branches have been opened and arrangements completed for the erection of another modern Branch Library building at the corner of Bloor Street and Gladstone Avenue; large and valuable additions have been made to Library equipment, and the staff correspondingly augmented, while the circulation, as well as the number of books used in the Reference Library, has grown by leaps and bounds, and the civic authorities and the public generally have exhibited a much livelier interest in the welfare and progress of this institution, as well as a keener appreciation of the advantages now afforded by it.

These annual reports derive added interest and importance both from the unique position which this Library commands among the Public Libraries of the Dominion, and from their exhibiting in concise and continuous form a record of the development of the work, useful at once for reference and comparison.

To a few of the most noteworthy features of the past year I propose now to refer in detail.

1. The Interest of the Community.

The outstanding feature of the year has been the extraordinary interest of the people of Toronto in the growth and development of the Public Library, as evidenced by the petitions to the City Council for additional aid that the privileges of the Library might be extended. The first result of this

interest was the recommendation of the Committee on Legislation to the City Council that the Legislature be asked to raise the rate for the support of the Public Library from a quarter of a mill to three-tenths of a mill. This had a majority in the Council, but on account of the adverse vote in the Board of Control it needed a two-thirds vote to carry the measure through Council, which it failed to get. However, conferences ensued between the Board of Control and a deputation from this Board, when we suggested that special aid might be granted by invoking the permissive clauses of the Public Libraries' Act applying to cities having a population of over one hundred thousand people, empowering the Council to raise an additional one-quarter mill rate for the purposes therein specified. This suggestion was finally adopted, and a formal requisition having been made by our Board, the City Council, on May 15th last, enacted a By-law authorizing the issue of debentures to be known as Public Library Debentures for the raising of the sum of \$75,000, of which \$60,000 was appropriated for the purchase of a site in the vicinity of Bloor Street and Dovercourt Road and the erection thereon and equipment of a Branch Library building to serve the north-western portion of the city, \$5,000 for books for this Branch, and the remaining \$10,000 for the purchase of books to complete the equipment of Branch Libraries recently established.

A site for this Branch was purchased at the corner of Bloor Street and Gladstone Avenue, with a frontage of 150 feet on the former by a depth of 100 feet on the latter street; architects' plans were submitted to and approved by the Board, and it is expected that tenders for the erection of a building will be placed before the next regular meeting of the Board.

This is the first instance where the Council has acted under these special clauses of the Act for the purpose of augmenting the Public Library rate, and we trust that the precedent thus worthily established will be followed by future Councils to supplement the steadily increasing requirements of our work.

2. New Branches Asked for.

Further proof of public interest may be seen in the number of deputations received during the year asking for the extension of library privileges. Kew Beach, Balmy Beach, East Toronto, Wychwood, Earlscourt and High Park have sent representatives to the Board, and we in answer have expressed our sympathy and promised that when funds are available the needs of these districts will be considered.

3. New Branches Provided.

A Branch at Deer Park was opened in February in rented quarters at 1524 Yonge Street and has been particularly successful. Open for three days a week, for five hours each day, the circulation has been 11,414.

A Branch in the Hillcrest School, North Bathurst Street, in the suburb known as Wychwood, was opened at the close of the year with about 1,600 volumes.

Especially important was the opening of a Municipal Reference Library in the City Hall, which took place in September and which already has proved to be a great success. The establishment of this Branch was due to the efforts of Mr. Controller Spence, who when Acting Mayor asked the co-operation of the Public Library Board, and for the purpose of equipment the Board of Control made a special grant of \$500.

The people of the suburb known as Earls court, who are isolated from library privileges, approached the Board in December to ask that something be done for them. They offered the use of rooms in an institutional church on Boon avenue. This matter is still under consideration.

The long felt and oft expressed desire of the people of the Kew Beach and Balmy Beach sections for a Branch is in a fair way of being gratified. The premises formerly used in connection with a volunteer fire service, and situated on Spruce Hill Road, have been handed over to the Library Board on the understanding that they would be used for Library purposes. It is hoped that the Council will aid this neighborhood by an appropriation for the necessary alteration and extension of the building for library service. The people of this district owe much to Mr. Roland Harris, the City Property Commissioner, through whose suggestion this property was brought to the notice of the Board.

4. Building Repairs.

The buildings of the Board have been well kept up, the one needing most repair being the new Riverdale Branch, where we suffered greatly on account of the defective work done in construction.

The internal telephone service at the Reference Library building having proved to be a failure, the system had to be entirely overhauled and a new cable and connections installed. The same criticism applies to the problem of ventilation in the Stack Room and the Reference Library Building, improvements to which are being considered.

5. Internal Expansion.

It will be seen, therefore, that this has been a year of expansion in the external development of the Public Library system. A perusal of the reports of the Chief Librarian and of the departments will show that it has been no less a year of expansion in the internal development, which needs must keep pace with, or perhaps outstrip, the external development, that proper progress may be made. There was the usual examination for entrance into the service of the Library, the result of which was a particularly good list of candidates, some of whom are already appointed on our regular staff.

A thorough revision of the By-Laws, Rules and Regulations of the Public Library Board was undertaken during the year and a number of changes made which it is believed will make for greater efficiency. It was felt that the growth of business consequent upon the development of the Library demanded that two evenings a month be given to business, and the time for the meeting of the Board was accordingly changed to the evening of the second Tuesday in the month. On the evening of the Friday next preceding the second Tuesday the two committees of the Board, now merged into one, known as the Libraries' and Finance Committee, met, presided over by a chairman who is elected at the Annual Meeting of the Board. This committee is now vested with the powers formerly inherent in the two committees.

6. The Library and the Schools.

A deputation from this Board, acting upon a recommendation of the Chief Librarian, waited upon the Board of Education requesting its co-operation in providing accommodation for Branch Library work in new school buildings hereafter erected in outlying districts not served with library facilities. The scheme submitted was that in planning new buildings a room on the ground floor, with separate entrance, be reserved for Public Library purposes, to be administered by the Library Board. The object aimed at was two-fold—economy in the expense of a separate building and convenience, particularly to the children attending such schools and generally to the people in the vicinity. The Board of Education approved of our suggestion and promised co-operation in the interests of the people of these outlying districts.

7. Library for the Blind.

A request having come from the Executive of the Canadian Free Library for the Blind for a room in which to carry on its great work of bringing to the blind of the Province the literature that is specially printed for them, it was decided to grant the free use of a room in the Western Branch on Annette Street. It was also decided to hand over to this Library the books for the blind which had formerly been included in our Library on Church Street.

8. Revision of Salary Scale.

For some time the Board had been considering a revision of the scale of salaries paid to the persons on the staff of the Library. Carefully prepared and considered in committees, and thoroughly discussed and approved by the Board, the new scale has stood the year's test very well. The minimum salary was raised about twenty per cent., and the maximum about thirty. Special amounts in addition to the regular scale were apportioned to those in charge of certain branches of the work.

9. Circulation.

I desire to call the attention of the Board to the steady development in our Library as shown by the following returns:—

Circulation of books for home reading:—

1909	380,851
1910	410,119
1911	474,017

Use of books in Reference Library:—

1909	70,801
1910	183,761
1911	219,992

10. The J. Ross Robertson Historical Collection.

During the year the Library has been the recipient of many gifts, but above all, and the most notable gift since the foundation of the Library, is the remarkable one of Mr. J. Ross Robertson which was opened to the public at the close of the year. The J. Ross Robertson Historical Collection of paintings, engravings and prints illustrating the early history of Toronto, and the Provinces of Ontario and Quebec—indeed covering almost the whole of Canada—occupies the Historical Room in the St. George Street wing, and is the largest and finest collection of the kind outside the Archives at Ottawa.

Appropriate opening ceremonies were held at the close of the year in the beautiful and spacious Reading-room of the new Reference Library before a representative and distinguished gathering; at these your Chairman had the honor of presiding.

The presentation of the Historical Collection was made to the Toronto Public Library Board by the donor, Mr. Robertson, and was received on behalf of the Board by your Chairman, and the gift was further acknowledged on behalf of the City by His Worship Mayor Geary and by Mr. Controller Church.

On this occasion, also, the portrait of Governor Simcoe, executed by Mr. E. Wyly Grier under commission from Mr. J. Ross Robertson, was unveiled by His Honour the Lieutenant-Governor of Ontario, Sir John M. Gibson, K.C.M.G.; on the same evening a portrait of the late John Hallam, Esquire, one of the founders of this Library, executed by Mr. William Cruikshank under instructions from this Board, was unveiled by Colonel James Mason, who was a member with Mr. Hallam of the first Public Library Board; and a handsome bronze tablet commemorating the gift of Andrew Carnegie, Esq., to the City of Toronto was unveiled by the Honourable Mr. Justice Kelly in the absence of the Honourable Chief Justice Sir Glenholme Falconbridge, who had been announced to perform this ceremony.

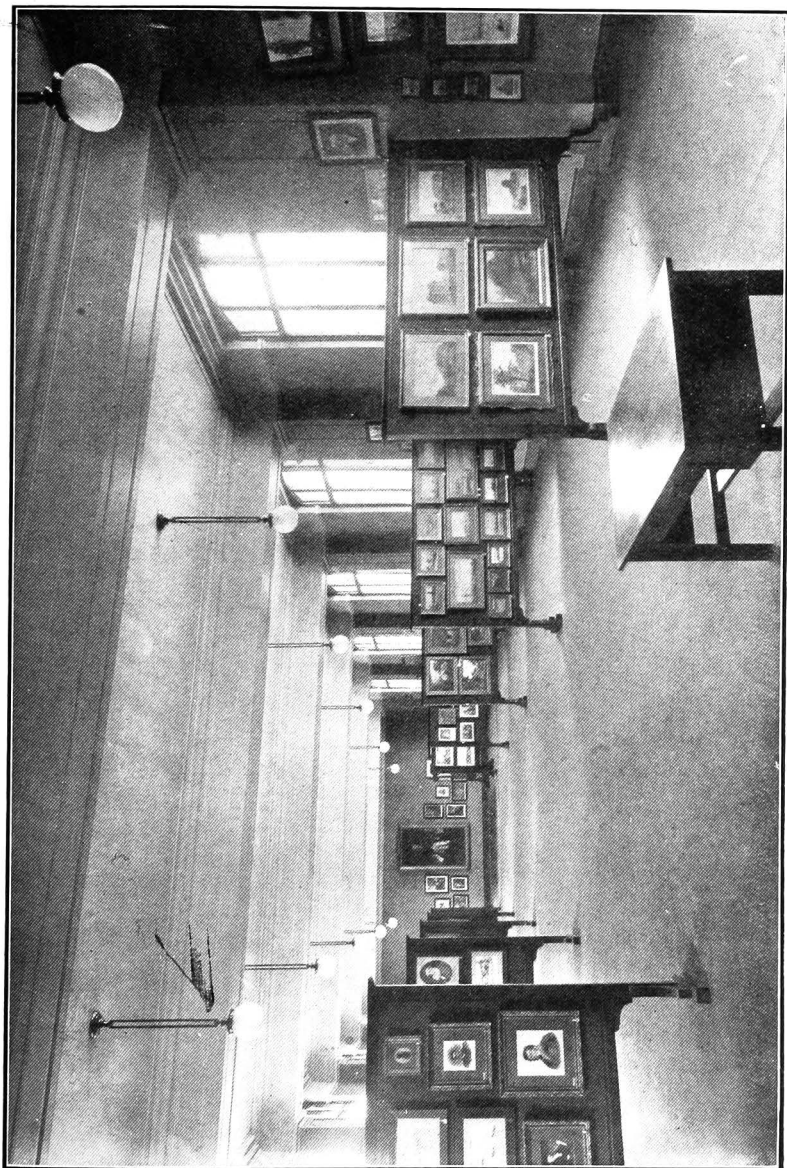
The accounts of the Library for the year have been duly audited by the City Auditor, and the statement of receipts and expenditures, together with classified reports of the circulation in the Central Library and our various Branches, are submitted herewith.

I cannot close these remarks without referring to the efficient, painstaking and excellent service which has been rendered to our Library throughout the year by Mr. George H. Locke, our Chief Librarian, as well as by Mr. Edward S. Caswell, the Assistant Librarian and Secretary-Treasurer of the Board, and the capable staff of assistants of the Library, all of whom have fulfilled their respective duties alike to the satisfaction of the public and of this Board.

In conclusion, I desire to express my feeling of gratitude to the members of the Board for their cordial and earnest co-operation in the endeavor to advance the interests of this institution, which has involved the sacrifice of considerable time and effort on their part in order to conscientiously discharge the important duties and responsibilities of their public office.

Toronto, January 31st, 1912.

N. B. GASH,
Chairman.



J. ROSS ROBERTSON HISTORICAL COLLECTION

REPORT OF THE CHIEF LIBRARIAN.

To the Members of the Public Library Board:

GENTLEMEN :—

The notable features of the year have been :—

1. The preparation of plans for the New Dovercourt Branch.

Acting on instructions from the Board, and in collaboration with the architects, Messrs. Chapman & McGiffin, plans were prepared for the Branch Library, for which the sum of \$60,000 (including building and site) was voted by the City Council. An effort was made to plan a building which would be different from the traditional style of library architecture, having regard to the development of recreational and educational phases of library work. During the coming year the sum of \$5,000 will be spent on books for this Branch, this amount having been given by the City Council for this specific purpose.

2. More Books for Branches.

The increase in the circulation of books in the Branches shows that the expenditure of money from the special fund of \$10,000 voted by the City Council for this purpose has had a good effect. With the addition of new books we have been able to destroy hundreds of the soiled books which have been for too long a time an unpleasant sight on our shelves. It is likely that this fund will be fully expended during 1912 on account of new and unforeseen demands upon it.

3. Municipal Reference Library.

Impressed with the necessity of having knowledge on municipal topics near at hand, the City Council, acting on the recommendation of Mr. Controller Spence, then Acting Mayor, asked the co-operation of the Board and the Chief Librarian in establishing a Municipal Reference Branch of the Public Library in the City Hall. This has been in operation four months, and about 300 books and pamphlets bearing directly upon phases of the problems that are likely to arise in the government of a great city are available for use by the public, and the patronage has fully justified the action of the Council. On account of its down town location, trade directories, consular reports, and works of general reference were added to aid the business man who wants information in a hurry. The resources of the Reference Library on College Street are always available by telephone to supplement the work of this Branch.

4. The Wychwood Branch.

After some months of negotiation with the Board of Education, the Bracondale Public Library, situated in the Public School of Bracondale, known as Hillcrest, was recognized as having proprietary rights in the room dedicated for the purpose of a public library prior to annexation to the city. The books of this Library have been repaired, rebound, accessioned, catalogued and supplemented by some hundreds of new ones. The Branch is known as Wychwood and was opened at the close of the year.

5. Continuous Increase in the use of the Reference Library.

Under this caption I wrote last year of the remarkable increase in the use of this department of our work, and there were some who thought that we had almost reached our limit of increase. That this increase was not a spasmodic affair, or due merely to local causes, is proven by the increase of this year. Let me quote from last year's report:—"The use of books in 1908 was about 40,000 volumes, in 1909 about 75,000 volumes, and for 1910, including juvenile reference set aside for the first time, 183,712 volumes." The statistics for this year show the use of 219,992 volumes, and this does not include Reference work at the Central Circulating Library, or at the Branches.

6. Accessions to the Library.

During the past three years there have been added to the Public Libraries some 47,000 volumes, of which 18,493 were added during 1911. The increased appropriation for books voted by the Board, and the special appropriation from the City Council, enabled me to purchase more books for the Branch Libraries, a policy which we shall have to keep up for at least two years. For this year again our thanks are specially due to the Librarian of the Guild Hall, London, and the Secretary of the Royal Society of Arts for special gifts.

7. Church Street Library.

The schedule of circulation returns shows that the old Central Circulating Library on Church Street is *steadily declining* in the number of patrons, notwithstanding the fact that we have used every effort to stimulate the growth. We have thoroughly cleaned it, installed a new lighting system, improved the heating system, provided an open shelf room, and sent to it copies of *all the new books*. In the face of all these improve-

ments we cannot keep up the circulation. Were it treated as any other Branch the circulation would drop to less than half of what it now is. The Library was never as well equipped as now, but the city has grown away from it.

8. Pressure on our Space.

With the remarkable increase in the development of the Library has come an increase in the work of administration, and the departments of accessioning, labelling, cataloguing, stock, book-binding and repairing, registration, etc., are very much crowded and the work is not economically carried on. These departments are in quarters which were intended for library development of less than two-thirds of what we are enjoying at present. The College Street Branch is in a very unsatisfactory condition and should be provided for in a new building, so that the space now occupied by it might be available for our overcrowded departments. We need a Circulating Library built as an extension to the north on St. George Street, to accommodate 60,000 volumes, reading rooms for men and women and, more especially, for our work with children. At present we are so handicapped by the limitations of space and arrangement we cannot develop the work with children as we ought.

9. Children's Rooms.

We have made as much progress as we can under present conditions in our provision for work with the children. We are doing the best we can in the crowded and unsuitable room at College Street, where Miss Bessie Staton is in charge, and the result is seen in the remarkable number of books in circulation and the use made of the Librarian and her room for reference purposes. But we have a room and a large population at the Riverdale Branch, and there will be a similar problem in 1913 at the new Dovercourt Branch. What we need particularly in 1912 is a trained Children's Librarian for Riverdale, and in 1913 one at Dovercourt; then we shall have three children's centres in which we may train librarians for this special work, and from which we may send help to the other Branches on certain days of the week.

10. Public Library Association.

Worthy of special attention on the part of the Board is the Public Library Association, composed of the members of the staff of all the library departments. This Association meets on

the evening of the third Tuesday of each month and discusses some phase of library development in relationship to our local conditions. It is now completing its second year and is no longer an experiment. As Chief Librarian I wish to testify to the good it has accomplished. It has increased the usefulness of at least ninety per cent. of the staff—this being the average attendance at the meetings. The interest of some of the members of the Board in this voluntary work has encouraged the members of the Association.

11. Monthly Bulletin of New Books.

Beginning with the first of January, 1911, we changed the bulletin of new books from a half-yearly issue to a monthly issue. This was a very radical step, but we felt that it was necessary if we were to be considered among libraries of the first rank on this continent. The result has been a great deal of labor on the part of the Cataloguing Department, but the public have appreciated it, and in addition to the local public, we have received subscriptions from smaller libraries throughout the province, who rely on our bulletins as an indication of what new books have been published in the month.

12. Department Reports.

The reports of the different departments have been prepared by the heads of the departments and are printed on succeeding pages. I desire to thank the members of the staff for their hearty co-operation in the Library during the past year. The increase of intelligent interest, aided and stimulated to a very great degree by the Public Library Association, has made the work of the Chief Librarian more pleasant and more productive.

Again I have the privilege of announcing to the Board that so far as internal affairs and concerned this has been a most successful year, and I thank the Board on behalf of the staff of the Library for the interest taken in the welfare and comfort of those who are engaged in the work.

GEORGE H. LOCKE,
Chief Librarian.

REPORTS FROM DEPARTMENTS.

Reference Department.

The year just closed has been one of steady progress, both in the increased use of the Reference Library and in the conditions making for more efficient service.

Early in the year the counter for the Inquiry Desk was installed, and besides being an improvement in the appearance of the Reading Room, it affords much better facilities for the distribution of the current periodicals, the use of which has increased in a very marked degree. The number of current periodicals obtainable for reading in the Reference Library is 103, while the Transactions and Proceedings of forty-five of the learned societies are also taken, and very frequently consulted by our readers.

In order to make room for the J. Ross Robertson Historical Collection, the patents were again moved, partly to the Stack Room and partly to the Art Room. This division of the patents was unavoidable, owing to the lack of an extra room sufficiently large to accommodate the whole of our valuable collection.

The Catalogue Department finished the work of cataloguing the books which were transferred from the Central Circulating Library, 1,500 volumes being added to our Stack Room from that source; 6,437 volumes came through the stock department, of which 756 were periodicals, 352 donations, and 196 patents; eight hundred pamphlets were received during the year, and 1,085 donations, of which 352 were bound and 733 unbound.

The number of books used during the year was 199,562, and including juvenile reference, 219,992, showing an increase of 36,992 over 1910.

We regret to report that, in spite of the vigilance of the staff, 13 volumes have disappeared from the open shelves during the year, and that a number of books have been mutilated.

It is also a matter of regret that a number of our readers have suffered the loss of hats, coats, gloves and umbrellas.

The usual amount of research work has been done for the general public, while that accomplished for the numerous clubs, debating societies, etc., added very considerably to our labours. The telephone and the mail service were very much in demand, and the inquiries answered through these means were varied and numerous.

During the meeting of the Ontario Library Association, and the session of the Ontario Summer School for Librarians, the use of the Reference Library was taken advantage of by

many of the members, and much appreciation was expressed for the assistance and services rendered them during their visits to the Library.

In September the Municipal Branch of the Reference Library was opened, and Miss Dora Spears placed in charge.

Three new assistants were added to the staff, namely, Miss May Maclachlan, B.A., Miss Zetta Harper, B.A., and Miss Minnie MacFayden, B.A.

We are much pleased to report that all the assistants on our staff are showing great interest in their work, and are performing their duties in a very creditable and satisfactory manner.

FRANCES M. STATON.
ELIZABETH MOIR.

Children's Department.

The second year of organized children's work in the College Street Branch Library has been a most successful one. Figures show that 23,650 books have been circulated for home reading, and that 20,423 visits by boys and girls have been made either for reading or reference purposes.

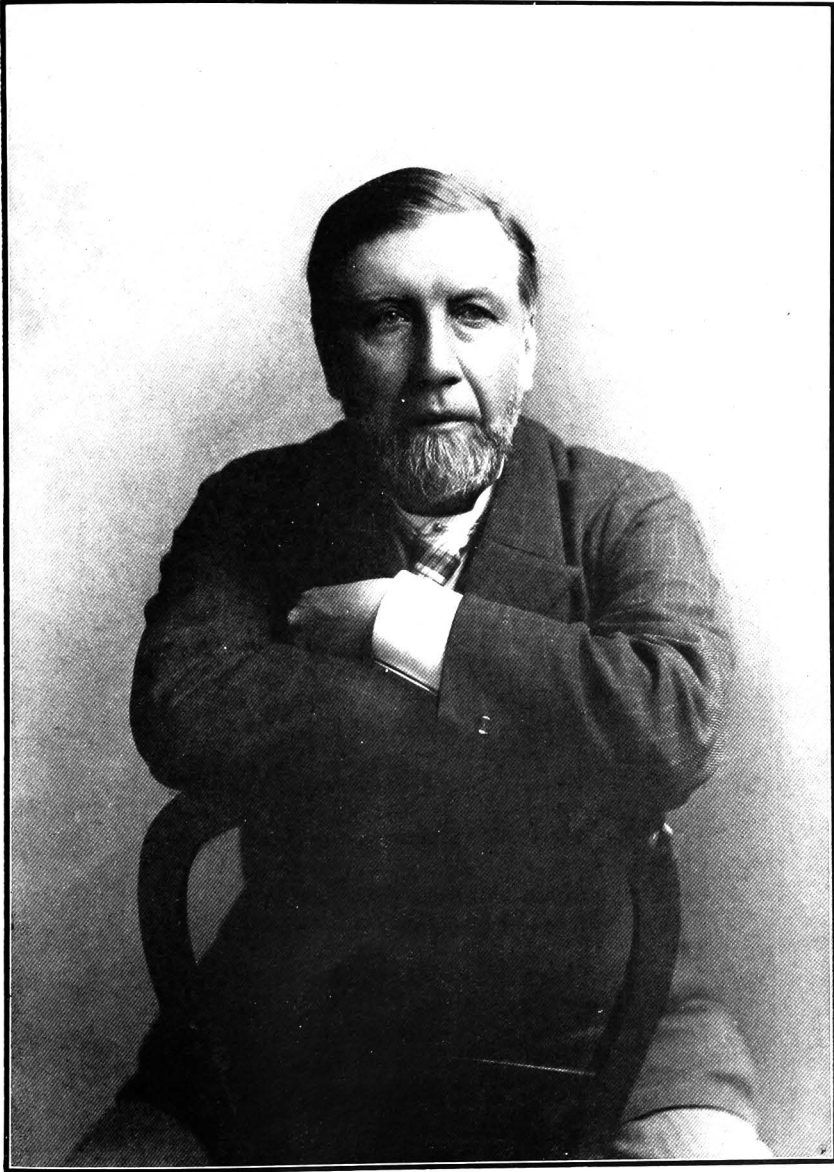
The noon hour patronage has not been so great as that of the previous year, owing to the removal of one of the schools to another part of the city. However, this decrease is not evident in the figures quoted, for the crowds attending after school and on Saturdays have made an increase of 1,287 readers.

These young patrons have come to us with very little effort on our part. Two schools have been visited and an endeavor made to interest the pupils through the teachers, but the response has not been noticeable. We cannot press the invitation work too far, because our room is not suitable for a much larger number of children.

Our juvenile reference work has not lagged, and many under the age of sixteen have come to the department seeking information for debates, compositions, etc., for which they were responsible. The adult public is becoming more familiar with the purpose of the department, and we have many enquiries from students and others for material adapted for children.

The jig-saw maps and the stereographic views have afforded instructive pleasure to many boys and girls.

During the year the appointments of the room have been changed; the round tables and cane chairs were removed, and long tables and benches more suitable for the use of juniors substituted; pictures and charts, also, placed on the walls, have



J. ROSS ROBERTSON, ESQ.

made the room more attractive. A beautifully colored set of historical pictures which illustrate events from early Roman times have created much interest.

We have come almost to the limit of our development, as the Children's Room is not suitable for story hours, or indeed anything that is likely to disturb adult readers. It is not a room, but a section of a room. This is the only Branch which has a Children's Librarian, and our work would have a greater effect on the children of the city if there were at least three librarians to give all their time to this work with children.

BESSIE M. STATON.

Cataloguing Department.

Before reviewing the work done by the Cataloguing Department during 1911, we would mention some changes in the staff. In May, Miss Willis, one of the cataloguers, and Miss Kyles, the filing assistant, left, and their places were not filled until September, when Miss Jamieson and Miss Lancey came.

This year Mr. Locke inaugurated the system, in practice in many libraries, of giving the assistants in each department, as far as practicable, a knowledge of the work of the other departments, and as a result, during the summer, two members of the reference staff spent some time in the cataloguing department. After two months with us, Miss Spears was put in charge of the Municipal Reference Branch, for which work a practical knowledge of cataloguing seemed of value. This branch, opened in September in the City Hall, has its own catalogue, consisting of about 1,000 cards. Duplicates of these cards are kept in the catalogue at the Reference Library.

We have endeavored to keep in view the large number of books in the Reference Library which require recataloguing, and this work has been progressing favorably. During the year the books given to the Public Library by the late John Hallam, known as the Hallam Collection, and numbering about 2,000 in all, were classified according to the Dewey system, and catalogued. These books are kept as a separate collection in compliance with the terms of the bequest.

As the books are recatalogued, the cards in the old catalogue are gradually being replaced by new typewritten cards, 1,025 have been received during the year. For publications of learned societies and sets such as the Harvard Classics these cards are particularly useful, saving much research work and typing.

A pamphlet catalogue for the public was started this year, and has made good progress, cards for 821 pamphlets having been filed.

For some months we have felt the desirability of classifying and cataloguing all the books in the Circulating Libraries before they were distributed. This was started for the Deer Park and Wychwood branches, and each of these libraries has its own card catalogue.

Beginning January, 1912, books for every branch and for the Central Library on Church St. will be classified and catalogued in this department before distribution. The Dewey classification will be used for all books except fiction; for this an arrangement, alphabetical by author, has been adopted instead of the Dewey system, which is chronological.

A catalogue for the College St. Branch has been started by Miss Carroll and her assistants, and 2,047 cards have been typed and revised in this department.

The statistics of the work done are as follows: In the Reference Library 11,083 books were catalogued; for these, 36,269 cards were typed and filed. In the Circulating branch of the department 8,211 books were catalogued, and for these 17,589 cards were typed and distributed to the branches.

Outside the regular work of classifying and cataloguing is the publication of the Monthly Bulletin. Eleven of these bulletins have been issued during the year, the July and August numbers being combined. For these bulletins 11,289 printer's slips have been typed. The appreciation of this bulletin by its subscribers, among whom are many Canadian and American libraries, seemed to justify the large amount of work in the preparation of the slips and in the proof-reading.

EDNA M. POOLE.

WINIFRED G. BARNSTEAD.

Accessioning Department.

The past year has been one of note in the history of the Toronto Public Library in that a larger number of books was accessioned than during any previous year. Including about eleven hundred volumes received as a donation from the Bracadale Library, which, on account of the annexation of that village, amalgamated with us under the title of the Wychwood Branch of the Toronto Public Library, and including also one hundred and ninety-six patents, we have received 18,494 books.

Many interesting and important pamphlets were received, notable among which were those on the Finnish question, Irish

Home Rule and Irish affairs, the war between Italy and Turkey, Destitution, the British Insurance Bill, Woman Suffrage, Better Housing, Civic Art, etc., etc. We received also Consular and Diplomatic reports, Royal Commission reports, Colonial Statutes dealing with the restriction of undesirable immigration, etc.

Then there were added bound copies of the magazines received during the year, including many valuable ones which treat, not only in English but also in French and German, of the various arts; also the usual publications of the learned societies, the annual advent of the *Who's Who*, guides and year-books, such as, "*Who's Who in Finance*," the "*Methodist Who's Who*," "*Catholic Who's Who*," "*Who's Who in South Africa*," the "*Wer ist*," the "*Qui etes-vous*," "*Baptist Year-Book*," "*Jewish Year-book*," "*Australian Year-book*," *Clergy Lists*, etc., etc.

The most valuable individual book purchased this year was "*The Ellesmere Chaucer*." The original of this illuminated edition of Chaucer's *Tales* was made about the year 1500, and has since been in the possession of the descendants of Lord Ellesmere, and only now has a reprint been allowed to be made of it. It is published in so limited an edition that probably ours will be the only one in Canada.

Interesting to brass or bronze workers, or indeed artists of any kind, are Hessling's books, "*Documents de Style Empire*."

Worthy of the attention of lovers of the woods, as well as workers or dealers in wood, are the volumes of Romeyn B. Hough's "*American Woods*." These contain actual specimens of the grain, in each of the three sections, transverse, radial, and tangential, of every tree grown domestically in America. We also have the other works on trees by the same writer.

A special effort has been made to help the little ones appreciate worth in literature. Excellent adaptations of, selections from, and illustrated editions of the works of the best English authors, have been placed on the juvenile shelves. Histories, nature books, tales of travel, biographies of great men, etc., have been put in enticing form within the range and capacity of the child mind.

Digesting the report of this department, it is found that of the 18,494 accessioned volumes, 196 were English, American and Canadian patents, 1099 books were a gift from Bracondale, 352 were bound donations from other sources, and the remainder (16,847) purchased books.

PATRICIA O'CONNOR.

Registration Department.

The new registration system adopted last year has proved highly satisfactory to the public, and has greatly increased the efficiency of the Library.

During the year 11,344 people registered, 2,108 being juveniles between the ages of 5 and 14.

The total number registered to date in the new system is 21,836. Uncalled for and cancelled cards numbering 1,398 were withdrawn from the register, and 1,369 lost cards were replaced by new ones.

During the year there were sent out 6,812 postcards for overdue books, 539 notices to borrowers and 192 notices to guarantors.

ALICE M. FUNSTON.

Book-Binding Department.

The development of this branch of our work has necessitated increasing the staff and enlarging the equipment of the bindery. The instalment of a paper-cutter and a card-cutter has added greatly to the efficiency and capacity of the plant. We now have two experienced and skilful book-binders, a sewing-woman and a young lady assistant engaged. The tabular statement appended shows the really astonishing amount of work accomplished during the year in this department:—

<i>Month</i>	<i>Books Repaired</i>	<i>Books Rebound</i>	<i>New Books Bound</i>	<i>New Books Stamped and Numbered</i>	<i>Magazines Finished and Titled</i>	<i>Monthly Totals</i>
JAN.	192	6	10	479	687
FEB.	81	71	36	1,454	47	1,689
MAR.	68	314	25	1,514	1,921
APR.	312	139	111	1,545	47	2,154
MAY	282	196	19	1,720	50	2,267
JUNE	176	228	62	1,681	35	2,182
JULY	307	86	99	1,243	27	1,762
AUG.	237	346	11	2,085	27	2,706
SEPT.	262	284	32	806	1,384
OCT.	201	169	74	1,909	54	2,407
NOV.	279	211	43	2,263	6	2,802
DEC.	365	129	39	2,137	13	2,683
TOTALS	2,762	2,179	561	18,836	306	24,644

Classified Circulation of Books Issued from the Church Street Library.

FROM JANUARY 1ST TO DECEMBER 31ST, 1911.

	Jan.	Feb.	Mar.	April	May	June	July	Aug.	Sept.	Oct.	Nov.	Dec.	Total	Per Ct.
Natural Sciences and Mathematics	218	230	232	196	247	158	157	199	203	186	212	192	2,429	1.2
Political, Social and Medical Sciences.....	497	467	561	410	366	275	279	327	384	522	543	498	6,129	2.5
Theology	223	238	277	226	189	159	168	208	215	287	301	246	2,737	1.4
Arts	785	809	792	607	590	492	422	523	490	636	768	628	7,542	3.7
General Literature and Collected Works.....	581	505	549	390	394	334	336	390	401	491	531	455	5,357	2.6
Geography, Travel and Topography	547	507	592	403	348	327	285	356	341	331	397	358	4,792	2.4
History	380	387	431	357	296	215	203	278	261	283	321	321	3,733	1.8
Biography	501	497	516	408	348	270	316	318	384	364	444	370	4,736	2.3
Poetry and the Drama	182	179	227	169	147	128	104	129	139	154	179	169	1,906	.9
Periodicals	339	300	342	394	427	441	380	459	455	532	615	597	5,281	2.6
Fiction	5,288	5,735	6,346	5,113	4,826	4,344	4,248	4,481	4,555	4,965	5,541	4,823	60,265	29.6
Juvenile	1,046	1,032	1,195	908	880	927	833	875	784	871	1,024	892	11,327	5.6
German	164	175	166	152	135	137	116	129	118	147	126	129	1,694	.8
French	219	168	159	155	160	134	127	118	142	136	166	133	1,817	.9
Italian	2	10	2	6	8	30	9	4	2	71
Spanish	6	3	2	1	66	3	82
Yiddish	28	245	245	128	256	254	1,156	.6
Books for the Blind	3	2	5
Current Magazines	400	319	348	397	355	293	282	299	332	348	387	357	4,087	2.
Total No. of Books Issued for Home Reading	11,372	11,563	12,735	10,350	9,716	8,634	8,317	9,309	9,452	10,456	11,818	10,424	124,146	60.9
Magazines Issued in Reading Room	6,833	6,255	6,717	5,127	4,643	4,392	4,622	4,717	4,958	5,496	6,765	6,377	66,902	32.9
Reference Books	883	1,138	1,314	1,047	1,093	886	852	713	851	1,101	1,378	1,347	12,603	6.2
Total	19,088	18,956	20,766	16,524	15,452	13,912	13,791	14,739	15,261	17,053	19,961	18,148	203,651	100.
Amount of Fines Collected	\$56.01	\$55.14	\$59.38	\$62.59	\$66.26	\$67.32	\$60.34	\$52.61	\$64.93	\$67.56	\$71.72	\$75.98	\$759.84	

Classified Circulation of Books Issued from the College Street Branch Library.

FROM JANUARY 1ST TO DECEMBER 31ST, 1911.

	Jan.	Feb.	Mar.	April	May	June	July	Aug.	Sept.	Oct.	Nov.	Dec.	Total	Per Ct.
Natural Sciences and Mathematics	150	165	201	143	114	102	120	126	87	116	89	101	1,514	.4
Political, Social and Medical Sciences	263	229	268	210	180	186	170	162	118	148	200	192	2,326	.6
Theology	134	126	119	86	62	39	46	59	50	104	83	101	1,009	.3
Arts	283	298	383	304	238	210	193	197	187	233	237	238	3,001	.8
General Literature and Collected Works	404	373	543	355	344	261	305	302	319	371	406	371	4,354	1.2
Geography, Travel and Topography	395	325	404	305	302	243	244	232	249	254	334	295	3,582	1.
History	421	453	469	412	331	197	266	269	284	320	320	296	4,038	1.1
Biography	448	431	476	434	347	260	259	320	333	404	418	422	4,552	1.3
Poetry and the Drama	175	171	156	160	136	106	125	135	146	187	176	137	1,810	.5
Periodicals	874	831	929	794	640	550	578	628	521	657	714	686	8,402	2.3
Fiction	6,455	6,346	7,203	6,491	5,652	5,186	5,117	5,152	5,255	5,597	6,340	5,863	70,657	19.3
Juvenile	1,841	2,062	2,640	2,137	1,922	1,704	1,904	1,635	1,511	1,726	2,199	2,369	23,650	6.5
German	26	33	17	16	12	9	14	14	19	25	28	26	239
French	22	26	19	23	19	20	19	15	21	22	30	18	254
Italian	1	1	1	1	4
Spanish
Yiddish	1	1
Books for the Blind
Current Magazines	253	219	223	186	182	145	156	142	154	166	162	147	2,135	.6
Total No. of Books Issued for Home Reading	12,145	12,089	14,051	12,056	10,482	9,218	9,516	9,388	9,254	10,330	11,737	11,263	131,529	35.9
Magazines Issued in Reading Room	2,037	1,843	1,865	1,360	1,199	997	951	949	1,048	1,160	991	14,400	3.9
Reference Books	25,127	17,935	24,156	21,596	17,063	10,232	8,461	8,987	11,312	18,058	20,249	16,386	199,562	54.6
Juvenile Reference Books	2,052	2,165	2,313	1,603	1,639	1,317	922	1,049	1,353	1,429	2,188	2,400	20,430	5.6
Total	41,361	34,032	42,385	36,615	30,383	21,764	19,850	20,373	22,967	30,977	35,165	30,049	365,921	100.
Amount of Fines Collected	\$65.12	\$53.64	\$48.77	\$49.90	\$60.19	\$54.08	\$44.67	\$46.96	\$55.45	\$51.70	\$64.17	\$60.97	\$655.62

Classified Circulation of Books Issued from the Yorkville Avenue Branch Library.

FROM JANUARY 1ST TO DECEMBER 31ST, 1911.

	Jan.	Feb.	Mar.	April	May	June	July	Aug.	Sept.	Oct.	Nov.	Dec.	Total	Per Ct.
Natural Sciences and Mathematics	47	39	69	67	72	64	48	87	104	92	103	98	890	1.5
Political, Social and Medical Sciences	31	33	44	60	62	72	57	83	91	80	99	115	827	1.4
Theology	23	20	37	40	45	53	45	56	80	73	92	115	679	1.1
Arts	65	76	111	105	130	108	111	133	157	142	173	212	1,523	2.6
General Literature and Collected Works	90	107	132	144	143	119	148	145	184	204	181	233	1,830	3.1
Geography, Travel and Topography	106	134	146	144	145	114	119	143	183	169	217	243	1,863	3.1
History	83	79	136	125	132	129	128	137	187	193	228	232	1,789	3.
Biography	69	103	118	121	120	125	112	129	136	129	174	178	1,514	2.5
Poetry and the Drama	40	30	51	43	50	54	56	35	52	58	72	82	623	1.1
Periodicals	490	445	622	672	595	567	574	499	641	601	672	703	7,081	11.9
Fiction	1,756	2,021	2,268	2,548	2,340	2,293	2,311	2,246	2,776	3,021	3,285	2,985	29,850	50.
Juvenile	743	723	845	864	788	808	774	704	843	890	1,016	991	9,989	16.7
German	1	3	4	4	2	2	11	11	10	2	8	8	55	
French	9	9	20	21	20	10	16	11	6	12	15	9	158	.3
Italian														
Spanish														
Books for the Blind														
Current Magazines	82	79	119	86	86	95	60	61	84	83	82	86	1,008	1.7
Total No. of Books Issued for Home Reading	3,635	3,901	4,722	5,044	4,730	4,613	4,570	4,469	5,534	5,754	6,417	6,290	59,679	100.
Magazines Issued in Reading Room														
Reference Books														
Total	3,635	3,901	4,722	5,044	4,730	4,613	4,570	4,469	5,534	5,754	6,417	6,290	59,679	100.
Amount of Fines Collected	\$4.26	\$6.99	\$13.13	\$8.85	\$17.34	\$10.62	\$9.54	\$7.65	\$8.49	\$12.48	\$11.75	\$8.43	\$119.53

Classified Circulation of Books Issued from the Riverdale Branch Library.

FROM JANUARY 1ST TO DECEMBER 31ST, 1911.

	Jan.	Feb.	Mar.	April	May	June	July	Aug.	Sept.	Oct.	Nov.	Dec.	Total	Per Ct.
Natural Sciences and Mathematics	31	32	32	35	31	19	17	24	29	32	44	37	363	.6
Political, Social and Medical Sciences	19	25	26	22	17	28	13	15	22	48	40	35	310	.5
Theology	13	13	10	5	6	2	5	8	11	11	19	15	118	.2
Arts	71	73	93	100	81	54	43	72	94	116	114	109	1,020	1.8
General Literature and Collected Works	46	58	79	87	56	49	41	53	64	62	76	74	745	1.3
Geography, Travel and Topography	76	88	84	69	41	35	36	33	62	79	71	103	777	1.3
History	67	74	107	91	42	33	40	53	61	73	85	61	777	1.3
Biography	50	56	54	43	53	57	40	45	58	75	67	80	668	1.2
Poetry and the Drama	44	50	64	44	25	18	16	42	40	42	52	36	473	.8
Periodicals	483	518	579	480	406	313	324	310	345	411	485	461	5,110	8.8
Fiction	2,874	2,757	3,248	2,710	2,506	2,265	2,187	2,627	2,812	3,001	3,363	2,965	33,405	57.
Juvenile	1,331	1,318	1,325	1,003	993	1,025	1,041	1,070	953	1,228	1,714	1,530	14,531	24.9
German	2	2	7	1	3	3	1	3	5	2	7	4	40
French		4	2				1				1		8
Italian
Spanish
Books for the Blind
Current Magazines	17	16	16	14	15	13	13	15	11	18	19	21	188	.8
Total No. of Books Issued for Home Reading	5,124	5,079	5,726	4,704	4,275	3,914	3,818	4,370	4,567	5,198	6,147	5,511	58,433	100.
Magazines Issued in Reading Room
Reference Books
Total	5,124	5,079	5,726	4,704	4,275	3,914	3,818	4,370	4,567	5,198	6,147	5,511	58,433
Amount of Fines Collected	\$21.14	\$18.74	\$18.38	\$22.41	\$20.27	\$16.54	\$21.27	\$18.01	\$18.22	\$16.92	\$20.42	\$27.19	\$239.51

Classified Circulation of Books Issued from the Queen and Lisgar Branch Library.

FROM JANUARY 1ST TO DECEMBER 31ST, 1911.

	Jan.	Feb.	Mar.	April	May	June	July	Aug.	Sept.	Oct.	Nov.	Dec.	Total	Per Ct.
Natural Sciences and Mathematics	31	37	59	49	25	18	18	23	20	24	35	42	381	.8
Political, Social and Medical Sciences.....	39	38	25	28	20	17	12	14	24	36	29	26	308	.6
Theology	14	13	29	18	10	12	13	8	9	15	18	18	177	.3
Arts	89	87	98	62	52	51	34	46	49	61	65	50	744	1.5
General Literature and Collected Works	36	39	50	54	29	23	15	18	19	30	38	39	390	.8
Geography, Travel and Topography	42	46	50	45	38	28	13	19	25	46	69	66	487	1.
History	76	85	105	84	60	49	45	44	67	66	58	52	791	1.6
Biography	57	68	71	46	44	38	39	35	48	50	78	56	630	1.2
Poetry and the Drama	16	35	16	17	23	20	19	11	9	15	33	21	235	.5
Periodicals	712	731	839	726	616	596	526	621	586	632	698	711	7,994	15.7
Fiction	1,878	1,801	1,985	1,853	1,813	1,823	1,601	1,852	2,094	2,185	2,397	2,372	23,554	46.3
Juvenile	1,061	1,074	1,399	1,184	987	901	863	828	907	1,035	1,107	1,088	12,434	24.4
German	2	5	6	5	10	7	2	9	7	3	3	8	59	.1
French	13	5	10	5	5	8	8	7	7	10	7	8	93	.2
Italian														
Spanish														
Books for the Blind						2	17	3	1	7	13	3	3	
Current Magazines	17	16	14	14	22	18			9				153	.3
Total No. of Books Issued for Home Reading	4,083	4,080	4,756	4,190	3,754	3,611	3,225	3,538	3,881	4,215	4,648	4,552	48,533	95.3
Magazines Issued in Reading Room	253	236	302	165	159	158	137	165	163	156	228	253	2,375	4.7
Reference Books														
Total	4,336	4,316	5,058	4,355	3,913	3,769	3,362	3,703	4,044	4,371	4,876	4,805	50,908	100.
Amount of Fines Collected	\$14.01	\$9.93	\$12.57	\$12.15	\$13.86	\$12.84	\$17.88	\$11.87	\$13.83	\$11.93	\$12.31	\$19.17	\$162.35

Classified Circulation of Books Issued from the Western Branch Library.

FROM JANUARY 1ST TO DECEMBER 31ST, 1911.

	Jan.	Feb.	Mar.	April	May	June	July	Aug.	Sept.	Oct.	Nov.	Dec.	Total	Per Ct.
Natural Sciences and Mathematics.....	33	47	48	41	33	27	27	35	38	42	28	25	424	1.2
Political, Social and Medical Sciences.....	8	30	27	31	22	13	12	17	34	23	28	26	271	.7
Theology	21	26	29	20	16	17	15	11	13	18	20	17	223	.6
Arts	39	53	49	32	21	29	29	33	35	43	26	45	434	1.2
General Literature and Collected Works	33	62	56	33	33	37	39	48	47	39	44	40	511	1.4
Geography, Travel and Topography	38	65	60	42	36	25	19	19	27	31	46	36	444	1.2
History	46	71	80	55	41	35	27	34	37	34	53	50	563	1.6
Biography	42	50	51	39	35	25	27	29	28	22	39	37	424	1.2
Poetry and the Drama	21	32	23	11	10	11	9	4	17	21	23	16	198	.5
Periodicals	185	295	310	285	204	229	235	235	252	232	292	272	3,026	8.4
Fiction	1,770	1,560	1,765	1,643	1,494	1,606	1,502	1,604	1,737	1,697	1,858	1,809	20,045	55.4
Juvenile	621	593	827	708	782	675	801	799	822	871	1,035	930	9,464	26.1
German	1		1										1
French
Italian
Spanish
Books for the Blind
Current Magazines	22	15	23	13	11	22	10	13	13	15	11	16	184	.5
Total No. of Books Issued for Home Reading	2,879	2,899	3,349	2,953	2,738	2,751	2,752	2,881	3,100	3,088	3,503	3,319	36,212	100.
Magazines Issued in Reading Room
Reference Books
Total	2,879	2,899	3,349	2,953	2,738	2,751	2,752	2,881	3,100	3,088	3,503	3,319	36,212
Amount of Fines Collected	\$8.38	\$8.75	\$7.90	\$7.79	\$13.09	\$9.52	\$11.06	\$9.56	\$11.00	\$9.45	\$10.73	\$10.43	\$117.66

Classified Circulation of Books Issued from the Deer Park Branch Library.

FROM JANUARY 1ST TO DECEMBER 31ST, 1911.

	Jan.	Feb.	March	April	May	June	July	Aug.	Sept.	Oct.	Nov.	Dec.	Total	Per Ct.
Natural Sciences and Mathematics	1	13	7	15	7	6	9	5	28	14	25	35	165	.9
Political, Social and Medical Sciences	1	11	8	12	7	7	15	14	27	21	17	23	163	.9
Theology			3	3	4		1	3	14	11	2	3	44	.2
Arts	2	24	22	16	14	13	8	17	42	36	34	39	267	1.5
General Literature and Collected Works	5	18	34	33	25	26	44	33	59	49	66	88	480	2.7
Geography, Travel and Topography	2	23	29	33	16	11	16	16	37	49	66	69	367	2.
History	1	10	17	10	13	10	8	17	31	50	47	48	262	1.5
Biography	5	21	26	20	19	10	10	11	28	51	55	52	308	1.7
Poetry and the Drama	3	18	15	8	14	12	8	12	23	20	34	44	211	1.2
Periodicals		10	10	21	18	15	18	23	55	71	88	111	440	2.4
Fiction	61	464	626	707	651	527	625	667	892	945	1,011	1,139	8,305	46.1
Juvenile	22	291	409	362	338	247	288	393	461	448	456	599	4,314	23.9
German							1		1			1	3	
French		2	1								4	1	8	
Italian														
Spanish														
Books for the Blind														
Current Magazines		1												
Total No. of Books Issued for Home Reading			1,207	1,241	1,145	899	1,082	1,246	1,763	1,822	1,996	2,332	15,742	87.3
Magazines Issued in Reading Room	103	906												
Reference Books							21	246	488	435	555	547	2,292	12.7
Total	103	906	1,207	1,241	1,145	899	1,103	1,492	2,251	2,267	2,551	2,879	18,034	100.
Amount of Fines Collected		\$.54	\$ 1.41	\$ 3.51	\$ 4.19	\$ 6.31	\$ 2.82	\$ 3.65	\$ 4.09	\$ 4.21	\$ 7.39	\$ 9.36	\$ 47.48

Total Classified Circulation from the Church Street and Branch Libraries.

FROM JANUARY 1ST TO DECEMBER 31ST, 1911.

	Jan.	Feb.	Mar.	April	May	June	July	Aug.	Sept.	Oct.	Nov.	Dec.	Total	Per Ct.
Natural Sciences and Mathematics.....	511	563	648	545	529	394	396	499	509	506	536	530	6,166	.8
Political, Social and Medical Sciences.....	858	833	959	773	674	598	558	632	700	878	956	915	9,334	1.2
Theology.....	428	436	504	398	332	282	293	363	392	519	535	515	4,987	.6
Arts.....	1,334	1,420	1,548	1,926	1,126	957	840	1,021	1,054	1,267	1,417	1,321	14,531	1.8
General Literature and . Collected Works.....	1,195	1,162	1,443	1,096	1,024	849	928	989	1,093	1,246	1,342	1,300	13,667	1.7
Geography, Travel and Topography.....	1,206	1,188	1,365	1,041	926	783	732	818	924	959	1,200	1,170	12,312	1.6
History.....	1,074	1,159	1,345	1,134	915	688	717	832	928	1,019	1,112	1,050	11,953	1.5
Biography.....	1,172	1,226	1,312	1,111	966	785	803	887	1,015	1,095	1,265	1,195	12,831	1.6
Poetry and the Drama.....	481	515	552	452	405	349	337	368	426	497	569	505	5,456	.7
Periodicals.....	3,083	3,125	3,631	3,372	2,906	2,711	2,635	2,775	2,855	3,136	3,584	3,541	37,334	4.7
Fiction.....	20,082	20,684	23,441	21,065	19,282	18,044	17,591	18,619	20,121	21,411	23,795	21,946	246,081	31.1
Juvenile.....	6,665	7,093	8,640	7,228	6,690	6,287	6,504	6,304	6,281	7,069	8,551	8,399	86,709	10.7
German.....	193	218	201	178	162	158	145	155	160	179	172	168	2,091	.3
French.....	263	214	211	204	204	172	171	151	176	180	223	169	2,338	.3
Italian.....	1	11	3	6	8	30	9	4	2	74
Spanish.....	2	5	3	2	1	66	4	83
Yiddish.....	28	245	245	128	256	255	1,157	.1
Books for the Blind.....	1	2	3	3	9
Current Magazines.....	791	665	743	711	690	601	569	548	608	699	765	710	8,160	1.
Total No. of Books Issued for Home Reading.....	39,341	40,517	46,546	40,538	36,840	33,640	33,280	35,201	37,551	40,863	46,266	43,691	474,274	59.7
Magazines Issued in Reading Room.....	9,123	8,334	8,884	6,652	6,001	5,547	5,710	5,831	6,169	6,812	7,984	6,630	83,677	10.6
Reference Books.....	26,010	19,073	25,470	22,643	18,156	11,118	9,334	9,946	12,661	19,594	22,182	18,280	214,457	27.1
Juvenile Reference Books.....	2,052	2,165	2,313	1,603	1,639	1,317	922	1,049	1,353	1,429	2,188	2,400	20,430	2.6
Total.....	76,526	70,089	83,213	71,436	62,636	51,622	49,246	52,027	57,724	68,698	78,620	71,001	792,838	100.
Amount of Fines Collected.....	\$168.92	\$153.73	\$161.54	\$167.20	\$195.20	\$177.23	\$167.58	\$150.31	\$176.01	\$174.25	\$198.49	\$211.53	\$2101.96
No. of Tickets Issued.....	2,225	1,446	1,093	748	566	621	621	666	762	1,045	1,016	611	11,346
Total of Tickets to Date.....	12,716	14,162	15,256	16,003	16,569	17,115	17,736	18,402	19,164	20,209	21,225	21,836	21,836



THE LATE JOHN HALLAM, ESQ.

From a painting by William Cruikshank, R.C.A.

**Total Number of Volumes
in Circulating and
Reference Libraries
December 31st, 1911.**

Classification	Church.	College.	Yorkville.	Riverdale.	Queen and Lisgar.	Western.	Deer Park.	Wychwood	Totals.
Natural Sciences and Math.	1,763	238	183	89	203	176	33	63	2,748
Political, Social and Medical Sci- ences	2,851	498	152	127	128	169	51	52	4,028
Theology	2,191	241	115	63	155	163	20	41	2,989
Arts	3,560	410	229	194	245	180	67	79	4,964
General Literature and Collected Works	4,409	733	486	251	732	237	138	73	7,059
Geography and Travel	2,812	468	352	181	481	167	98	53	4,612
History	3,423	762	586	379	728	326	109	91	6,404
Biography	4,704	677	576	314	794	279	98	60	7,502
Poetry	1,579	167	167	169	216	102	81	52	2,533
Periodicals	1,540	371	1,337	540	2,117	105	42	55	6,107
Fiction	18,583	2,760	3,571	2,638	4,799	2,652	1,185	799	36,987
Juvenile	5,412	1,974	1,381	1,590	1,903	1,081	674	315	14,330
German	1,059	74	55	39	5	1	2	1,235
French	980	23	4	1	1,008
Italian	111	2	113
Spanish	19	19
Yiddish	137	137
	55,133	9,398	9,194	6,575	12,506	5,638	2,598	1,733	102,775

Circulating Libraries as above	102,775
Reference Library	60,942
" " Church St.	197
" " College St.	256
" " Yorkville	355
" " Riverdale	388
" " Queen and Lisgar	352
" " Western	251
" " Deer Park	100
" " Municipal	320
	63,161
Hallam Collection	2,034
Pamphlets	18,002
Manuscripts	334
Patents	9,303
Held for Earls court	34
	195,643

**Additions and Deductions
in Circulating and
Reference Libraries
during 1911**

Number of books and pamphlets in Reference and Circulating Libraries, Dec. 31st, 1910	*179,856
Deduct:	
Lost and paid for	71
Withdrawn	2,929
Missing	540
Destroyed by Medical Health Department	183
	3,723
	176,133
Add:	
Purchased	16,224
Periodicals bound (Ref.)	555
Donated	581
Wychwood stock	1,099
Patents	196
Pamphlets	821
Held for Earls court Branch	34
	195,643

*Through a clerical error the total reported Dec. 31st, 1910, was 7,596 in excess of the actual number in the Library. The Reference Library was credited with this excess.

**Classified list of
Books received
during 1911 in
Circulating Libraries**

Classification	Church.	College.	Yorkville.	Riverdale.	Queen and Lisgar.	Western.	Deer Park	Wychwood	Total.
Natural Sciences and Math.	78	32	21	31	9	31	33	63	298
Political, Social and Medi- cal Sciences	375	122	19	71	15	34	51	52	739
Theology	142	23	16	26	10	25	20	41	303
Arts	304	82	37	116	37	53	67	79	775
General Literature and Collected Works	327	90	52	65	10	36	138	73	791
Geography and Travel	220	113	47	76	30	42	98	53	679
History	310	100	55	185	24	68	109	91	942
Biography	307	130	63	148	37	34	98	60	877
Poetry	129	21	12	29	7	14	81	52	345
Periodicals	75	47	47	62	48	48	42	55	424
Fiction	972	727	526	770	404	392	1,185	799	5775
Juvenile	482	331	260	772	290	386	674	315	3510
German	44						2		46
French	80								80
Italian	4	5							9
Spanish	7	1							8
Yiddish	133								133
Reference	59	2	8	192	33	79	56		429
Juvenile Reference		46	40						86
Total	4,048	1,872	1,203	2,543	954	1,242	2,654	1,733	16,249

STATEMENT OF RECEIPTS AND EXPENDITURE.

FOR THE YEAR ENDING DECEMBER 31ST, 1911.

Receipts.		Expenditure.	
Jan. 1st, To Balance in Dominion Bank, Spadina and College Branch	\$10,548 98	Dec. 31st, By Books	\$16,053 69
Dec. 31st, To Library Rate	76,652 00	“ English Patents	134 54
“ Legislative Grant	260 00	“ Newspapers and Magazines	2,538 78
“ Special Grant from City for Books	10,000 00	“ Binding	3,892 90
“ for College and New Branches. . .		“ Printing	669 14
“ Special Grant from City for Books		“ Stationery	326 32
“ for Dovecourt Branch	5,000 00	“ Postage	305 68
“ Rents	993 96	“ Electric Light	2,000 39
“ Newspapers and Magazines sold ..	100 19	“ Gas	98 92
“ Borrowers' Tickets	608 75	“ Fuel	2,927 07
“ Catalogues	72 26	“ Water	362 18
“ Fines	2,094 65	“ Rent of Branches	390 00
“ Books lost and paid for	71 57	“ Wagon Service	644 55
“ Damage to books	6 25	“ Telephones	157 81
“ Books sold	114 80	“ Repairs and Alterations	1,554 04
“ Waste paper sold	162 00	“ Salaries	32,411 43
“ Refund and Bank interest	248 25	“ Insurance	1,469 11
“ Special Grant from City for furniture and fittings for Municipal Reference Branch	500 00	“ Petty Expenses	208 99
		“ Furniture, College St.	150 69
		“ Furniture, Reference	1,196 88
		“ Furniture, Municipal Reference..	423 50
		“ Furniture, Riverdale	635 28
		“ Andrew Carnegie Memorial Tablet	375 97
		“ John Ross Robertson Historical Collection (Screens, etc.)	613 41
		“ John Hallam Portrait (part payment)	250 00
		“ Building Account	100 00
		“ Registration	182 06
		“ Catalogues	1,369 90
		“ Card Catalogues (customs duty) ..	17
		“ Maintenance	883 51

"	Caretaking	5,404 46
"	Cataloguing	1,140 95
"	Furnishing and Equipment	1,805 97
"	Furniture and Fittings	164 52
"	Travelling Expenses	65 00
"	Law Costs	43 70
"	Furniture, Queen and Lisgar	74 90
"	Balance in Dominion Bank, College and Spadina	*26,607 25
		<u>\$107,433 66</u>

*Includes City's special grants for books.

February 14th, 1912. Audited and found correct. (Signed) WALTER STERLING, City Auditor.

NEW LIBRARY BUILDINGS.

FOR THE YEAR ENDING DECEMBER 31st, 1911.

Receipts.

Jan. 1st, To Balance in Dominion Bank, Spadina and College Branch	\$ 1 75
" Vokes Hardware for Brass returned	16 00
" City Treasurer, Grant for Dovercourt Branch	25,000 00
" Dominion Bank, Interest allowed..	50 00
	<u>\$25,067 75</u>

February 14th, 1912. Audited and found correct.

Expenditure.

Dec. 31st, By McIntosh Granite Co.	\$ 17 75
" City Treasurer, Purchase of Dover- court Branch site	19,916 56
" Balance in Dominion Bank, Spadina and College Branch	5,133 44
	<u>\$25,067 75</u>

(Signed) WALTER STERLING, City Auditor.

List of Donations, 1911

	Bound.	Unbound.		Bound.	Unbound.
Adams, I. William, New York..	1	—	Janet, Charles, Limoges, France.	—	2
Agnew, J. A., Toronto	15	—	Jessup, Mrs. Morris K., New York	1	—
Allen, Alex. McD., Toronto.....	1	6	Johnson, P., California	1	—
Arnoldi, Allen, Boston.....	—	1	Kelso, J. J., Toronto	11	1
Ballinger, Dr. John, Wales ...	1	—	Keystone Fireproofing Co.	—	1
Barry, E., Toronto	2	—	King's Printer, Ottawa	17	4
Barton, C., Glasgow	1	—	King's Printer, Regina	2	1
Bengough, J. W., Toronto	1	—	King's Printer, Toronto	12	1
Biggar, E. B., Toronto	—	1	King's Printer, Victoria, B.C..	1	1
Brunswick-Balke-Collender Co.,	—	—	King's Printer, Wellington, N.Z.	2	3
New York	—	1	King's Printer, Winnipeg	2	—
Cartwright, Right Hon. Sir	—	—	Knibbs, G. H., Melbourne	4	—
Richard J.	1	—	Larkin, H. H., Buffalo	4	—
Cassels, Mrs., Toronto	2	—	Libraries:—	—	—
Cassirer, Verlag von Bruno,	—	—	Aberystwyth, National of Wales	1	1
Berlin	—	1	Belfast, Ireland	—	1
Caswell, E. S., Toronto	—	1	Blackburn, Eng.	—	1
City Clerk, Toronto	3	—	Boston Athenaeum, Mass.	—	1
City Engineer, Toronto	1	—	Boston, Public, Mass.	—	1
Coleman, Mr., Toronto	3	—	Bradford, Eng.	—	1
Colleges and Universities:—	—	—	Bristol, Eng.	—	1
Bowdoin College	—	3	Brooklyn Public, N.Y.	—	8
Chicago University	—	3	Buffalo Public, N.Y.	—	1
Columbia University	—	5	California State, Sacramento.	—	1
Cornell University	—	2	Cambridge, Eng.	—	1
Harvard University	2	1	Cambridge Public, Mass.	—	10
Illinois University	—	6	Cardiff, Wales	—	5
New York University	1	1	Carnegie, Atlanta	—	3
Northwestern University, Il-	—	—	Carnegie, Ottawa	2	1
linois	—	1	Carnegie, Pittsburg	—	1
Queen's University, Kingston	—	1	Central, London, Eng.	—	1
State of New York University,	—	—	Chicago Public	—	10
Albany	—	2	Croydon, Surrey, Eng.	—	1
Toronto University	2	14	Detroit Public	—	4
Trinity University	1	—	District of Columbia, Wash...	—	18
University of Pennsylvania..	—	1	Dominion Parliament	—	1
University of Saskatchewan..	—	2	Drexel Institute, Philadelphia	—	1
University of Washington,	—	—	Dundee, Scotland	—	1
Seattle	—	1	Eccles Public, Lancashire, Eng.	—	1
Western Reserve University	—	—	Enoch Pratt, Baltimore	—	1
Library School, Cleveland.	—	1	Fraser Institute, Montreal ...	—	1
Wisconsin University	—	3	Glasgow Corporation	1	—
Yale University	—	4	Great Yarmouth, Eng.	—	1
Covenant Publishing Co.	1	—	Haverhill, Mass.	—	2
Crete Printing House, France ..	1	—	Helena Public, Montana	—	1
Dixon, Joseph, Crucible Co., Jer-	—	—	Hyde, Cheshire, Eng.	—	1
sey City	1	—	Illinois State Historical	1	—
Dryden, John F., Newark, N.J.	1	—	Imperial, Calcutta	—	1
Duca di Lebona, Roma	—	1	Indiana, Public Commission of	—	2
Dudley, Mrs. Lucy Bronson, New	—	—	Jacksonville, Fla.	—	1
York	1	—	John Crerar, Chicago	—	3
Farnsworth, Edward C., Port-	—	—	John Rylands, Manchester,	—	—
land	1	—	Eng.	4	1
Fels, Joseph	—	1	Kimberley, South Africa	—	1
Gard, Anson A., Toronto	1	1	Leavenworth Free, Kansas	—	1
Geddes, Prof. J., Jr., Boston..	—	1	Leeds, Eng.	—	1
Hedley, James, Toronto	78	—	Library of Congress, Washing-	—	—
Henriksen, Geschwornen G., Nor-	—	—	ton	3	5
way	—	1	Liverpool, Eng.	—	1
James, C. C., Toronto	—	1	Los Angeles, Cal.	—	2
Jamieson, Owens & Edmonds ..	—	1	Manchester, Eng.	—	5

	Bound.	Unbound.		Bound.	Unbound.
Mechanics' Institute, San Francisco	—	1	Association for Cultivation of Science, Literature and Art, Hamilton	—	1
Michigan State	—	3	Association of Ontario Land Surveyors	—	1
Milwaukee Public	—	6	Biblioteca Municipal de Guayaquil	—	27
Minneapolis Public	—	1	Bibliotheca e Archive Publico de Para, Brazil	—	1
New Haven, Conn.	—	1	Board of Trade, Toronto	—	1
New Orleans, La.	—	1	Board of Trade, Victoria	—	1
New South Wales	—	1	Board of Trade, Winnipeg	—	5
New York Mercantile	—	1	Boston Transit Commission	1	—
New York Public	10	—	British Museum	3	1
Nottingham, Eng.	10	—	Bureau of Industries, Winnipeg	—	1
Ohio State, Columbus	—	6	Bureau of Municipal Research, Cincinnati, O.	—	8
Omaha Public, Neb.	—	3	Bureau of Provincial Information, Victoria, B.C.	—	2
Osaka, Japan	—	1	Canadian Archives, Ottawa	—	8
Patent Office, London, Eng.	—	2	Canadian Bible Society	1	2
Philadelphia	—	1	Canadian Club, Ottawa	—	1
Plymouth, Eng.	—	2	Canadian Folk-Lore Society, Toronto	—	1
Portsmouth, Eng.	—	1	Canadian Forestry Association	—	1
Pratt Institute Free, Brooklyn	—	5	Canadian Military Institute	—	2
Providence, R. I.	—	1	Canadian National League	—	43
Queen's Borough, New York	—	1	Canadian Red Cross Society, Toronto	—	8
Regina, Sask.	—	2	Carnegie Hero Fund Commission	—	1
Reynolds, Rochester	—	1	Central Railway Engineering Club of Canada	—	10
Richmond, Eng.	—	1	Children's Aid Society of Pennsylvania	—	1
St. Joseph, Mo.	—	1	City Superintendent of Schools, New York	1	—
St. Louis Mercantile, Mo.	—	1	Commission of Conservation, Ottawa	3	1
St. Louis Public, Mo.	10	—	Department of Agriculture, Ottawa	1	10
Salem, Mass.	—	1	Department of Agriculture, Toronto	6	9
Scranton Public, Pa.	—	2	Department of Agriculture, Washington	—	42
Seattle, Wash.	—	1	Department of Commerce and Labor, Washington	2	16
Taunton, Mass.	—	1	Department of Education, New York	1	—
Tokyo, Japan	1	—	Department of Education, Tokyo, Japan	1	—
Twickenham, Eng.	—	1	Department of Education, Toronto	12	2
Victoria, Australia	—	1	Department of Education, Winnipeg	—	1
Wandsworth, Eng.	—	1	Department of Health, Toronto	—	1
Westminster, Eng.	—	1	Department of Insurance, Ontario	1	—
Wilmington Institute, Del.	—	2	Department of Interior, Ottawa	—	32
Windsor Public, Ont.	—	1	Department of Interior, Washington	7	—
Wisconsin Free Library Commission	—	8	Department of Labour, Ottawa	—	1
Worcester, Mass.	—	1	Department of Lands, Forests and Fisheries, Quebec	—	2
Workington Public, Eng.	—	1	Department of Lands, Forests and Mines, Toronto	3	—
Lordly, H. R., Montreal	—	1			
Lowndes, Mr.	1	—			
MacKendrick, W. G., Toronto	—	1			
McClintock, Oliver, Pittsburg	1	—			
McLachlan, R. W.	—	1			
Marsden, Victor E., M.A., Finland	—	1			
Marsden, Wilfred H., Toronto	5	—			
Mercer, Col. M. S., Toronto	—	1			
Miller, Willet G., Toronto	—	1			
Murphy, Hon. Charles	2	—			
Myers, John S., Los Angeles	1	—			
Nattress, Rev. Thos. Amherstburg	—	2			
Open Air Crusaders, Chicago	1	—			
Paton, Messrs. J. & J., London, Eng.	1	—			
Public Bodies:—					
Academy of Medicine, Toronto	—	1			
American Association for International Conciliation	—	23			
American Federation of Labor	—	1			
American Library Association, Chicago	—	2			
American Society for the Judicial Settlement of International Disputes, Baltimore.	—	1			

	Bound.	Unbound.		Bound.	Unbound.
Department of Marine and Fisheries, Ottawa	—	1	Pittsburg Civic Commission ..	—	1
Department of Militia and Defence, Ottawa	3	1	Playgrounds Association, Toronto	—	1
Department of Mines, British Columbia	—	1	Provincial Archives, Toronto ..	4	—
Department of Mines, Ottawa ..	—	31	Provincial Board of Health ..	1	—
Department of Tourist and Health Resorts, New Zealand ..	—	6	Public Service Commission, Albany, N.Y.	2	1
Department of Prisons, etc., Ontario	11	20	Registrar General, Ontario ..	1	—
Geographic Board of Canada ..	—	7	Registrar of Loan Corporations, Ontario	1	—
Grain Exchange, Winnipeg ..	—	1	Royal Society of Arts, London, Eng.	42	—
Grand Lodge A.F. and A.M. of Canada	—	1	Royal Society of Canada	3	—
House of Commons, Ottawa ..	1	—	Royal Victoria Hospital, Montreal	1	3
Imperial Bank of Canada ..	—	1	Silk Association of America ..	—	1
Inspector of Hospitals and Public Charities, Toronto	1	—	Smithsonian Institution, Washington	12	22
International Association of Factory Inspectors	—	1	Society of Chemical Industry, Toronto	—	1
Lake Mohonk Conference on International Arbitration ..	—	1	Society of Genealogists, London	—	1
Legislative Department, Cleveland	1	—	Special Tax Commission, Illinois	1	—
Lennox and Addington Historical Society	—	3	State Historical Society of Wisconsin	3	—
Local Council of Women, Toronto	—	1	Tonic Sol-Fa College, London, Eng.	—	1
Lowell Observatory	—	3	Vancouver Island Development League	—	2
Maryland Peace Society	—	1	Workmen's Compensation Service and Information Bureau, New York	—	1
Meteorological Office, Toronto ..	—	2	Rawie, Henry, Baltimore	1	—
Michigan State Board of Health	1	1	Reed, Thomas. Brackett Memorial Assn.	1	—
Minnesota Historical Society ..	1	—	Smythe, Albert E. S.	2	—
National Civic Federation, New York	—	1	Stapells, Richard	1	—
New England Historical and Genealogical Soc., Boston ..	—	6	Steel, Richard, Liverpool	1	—
New York School of Philanthropy	—	1	Stone, Mrs. E.	10	—
New York State Hospital for Crippled and Deformed Children	—	1	Sweny, Mrs. G. A., Toronto ..	—	1
North Side Board of Trade, New York	—	1	Talling, Rev. Marshall P.	2	—
Northwestern Mutual Life Ins. Co.	—	2	Thompson, Slason, Chicago	2	—
Ontario Educational Association	—	3	Tyrrell, H. G., Evanston, Ill.	—	1
Ontario Society of Artists	—	16	Tyrrell, J. B., Toronto	—	14
Pennsylvania Prison Society ..	—	1	Universal Portland Cement Co. ..	—	1
Permanent Exhibitions Committee, British Guiana	—	3	Westervelt, W. D., Honolulu ..	—	1
			Wickett, S. Morley	—	1
			Wise, Frank	—	1
			Wolfram, G. G., Toronto	1	—
			Wood, L. A., London	—	1



CARNEGIE COMMEMORATIVE TABLET

List of Newspapers, Periodicals, and Transactions.

D—daily. W—weekly. M—monthly. Q—quarterly. A—annually.
Those marked thus (*) are donated.

CHURCH STREET LIBRARY

Canadian.			
*Acton Free Press.	W.	Halifax Herald.	D.
*Alberta Gazette.	W.	*Halifax Nova Scotian.	W.
*Ancient Forester. London.	M.	Hamilton Spectator.	D.
*Aurora Banner.	W.	Hamilton Times.	D.
*Barrie Examiner.	W.	*Home Circles Leader. Welland.	M.
*Barrie Gazette.	W.	Insurance Chronicle. Montreal.	M.
*Belleville Intelligencer.	D.	*Jewish Eagle. Montreal.	D.
*Brampton Banner and Times.	W.	*Kamloops Standard.	Semi-W.
*Brampton Conservator.	W.	*Kingston Standard.	D.
*Brantford Expositor.	W.	*Labor Gazette. Ottawa.	M.
British Columbia Magazine.		La Patrie. Montreal.	D.
	Vancouver—M.	Le Devoir. Montreal.	D.
*Brockville Times.	W.	London Advertiser.	D.
*Canada Gazette. Ottawa.	W.	London Free Press.	D.
Canadian Century. Montreal.	W.	*Manitoba Gazette. Winnipeg.	W.
Canadian Entomologist.		*Markham Economist.	W.
	Guelph—M.	*Markham Sun.	W.
Canadian Finance. Winnipeg.		*Milton Canadian Champion.	W.
	Semi-M.	Montreal Gazette.	D.
Canadian Horticulturist.		Montreal Star.	D.
	Peterborough—M.	*News-Telegram. Calgary.	D.
Canadian Pictorial. Montreal.	W.	*Orangeville Banner.	W.
*Canadian Woodman. London.	M.	*Orchard City Record.	
*Catholic Record. London.	W.		Kelowna, B.C.—W.
*Christian Messenger.		*Orillia Packet.	W.
	Owen Sound—W.	Ottawa Citizen.	D.
*Collingwood Bulletin.	W.	*Parry Sound Canadian.	W.
*Collingwood Enterprise.	W.	*Parry Sound North Star.	W.
*Delhi Reporter.	W.	*Petrolia Advertiser.	W.
*Dundas Star.	W.	*Port Arthur Chronicle.	W.
*Dundas True Banner.	W.	*Port Colborne Times.	W.
*Durham Chronicle.	W.	*Prince Rupert Journal.	Semi-W.
*Durham Review.	W.	*Prince Rupert News.	D.
*Farm and Dairy. Peterboro.	W.	Quebec Chronicle.	D.
*Forester. London.	M.	*Regina Citizen.	W.
*Fort William Herald.	W.	*Regina Morning Leader.	D.
*Goderich Signal.	W.	*Regina Province.	W.
*Goderich Star.	W.	*Regina Standard.	D.
		*Richmond Hill Liberal.	W.

Chemical News. London.	W.	Pigeons. London.	W.
*Christchurch Press.		Plumber and Decorator. London.	M.
Christchurch, N.Z.—D.		Positivist Review. London.	M.
*Church Gazette. London.	M.	Process Engraver's M'thly. London.	W.
*Clarion. London.	M.	Public Opinion. London.	W.
Contemporary Review. London.	M.	Punch. London.	W.
Cornhill. London.	M.	Quarterly Review. London.	W.
*Draper's Record. London.	W.	Queen. London.	W.
Dublin Freeman.	W.	Quiver. London.	M.
Economist. London.	M.	Review of Reviews. London.	M.
Edinburgh Scotsman.	D.	Saturday Review. London.	W.
Edinburgh Review.	Q.	Spectator. London.	W.
Electrical Review. London.	W.	Sphere. London.	W.
Electrician. London.	W.	Sporting and Dramatic News.	
Engineer. London.	M.	London—W.	
Engineering. London.	W.	Standard of Empire. London.	W.
*English Churchman. London.	W.	*State Correspondent. London.	M.
English Illustrated Magazine.		Statist. London.	W.
London—M.		Strand. London.	M.
English Mechanic. London.	W.	Sunday at Home. London.	M.
Family Herald. London.	M.	T. P.'s Magazine. London.	M.
Field. London.	W.	Tablet. London.	W.
Fortnightly Review. London.	M.	*Times of Natal. Maritzburg, S.A. D.	
Furniture Record. London.	W.	Truth. London.	W.
Garden. London.	W.	*United Empire. London.	M.
Gentlewoman. London.	W.	*Vaccination Inquirer. London.	M.
Glasgow Herald.	W.	Vanity Fair. London.	W.
Graphic. London.	W.	Veterinary Journal. London.	M.
Guardian, London.	W.	*war Cry. London.	W.
*Herald of the Cross. London.	M.	Westminster Review. London.	M.
*Herald of the Golden Age.		Windsor Magazine. London.	M.
London—M.		Wood-Worker. London.	M.
Illustrated London News.	W.		
Journal of the Society of Arts.		American.	
London—W.		Abel's Photographic Weekly.	
Kennel Gazette. London.	M.	Cleveland.	
Labour Gazette. London.	M.	Aircraft. New York.	M.
Labour Leader. London.	W.	America. New York.	W.
Lady's Pictorial. London.	W.	*American Catholic. Los Angeles.	M.
Light. London.	W.	American Carpenter and Builder.	
Live Stock Journal. London.	W.	New York—M.	
Liverpool Post.	W.	American Catholic Quarterly.	
Lloyd's Weekly News. London.	W.	Philadelphia.	
London Telegraph.	D.	American Gas Light Journal.	
London World.	W.	New York—W.	
London Times.	D.	American Hatter. New York.	M.
*Mercantile Guardian. London.	M.	American Homes and Gardens.	
Mining World. London.	W.	New York—M.	
Musical Herald. London.	M.	American Journal of Sociology.	
Nature. London.	W.	Chicago—Bi-M.	
*Navy. London.	M.	American Machinist. New York.	W.
*New Zealand Gazette.	W.	American Magazine. New York.	M.
Nineteenth Century and After.		*American Travellers' Gazette.	
London—M.		New York—M.	
Page's Magazine. London.	W.	Architectural Record. New York.	M.
Pall Mall Magazine. London.	M.	Atlantic Monthly. Boston.	

Blackwood's. New York.	M.	Missionary Review of the World.	
Bird-Lore. New York.	Bi-M.	New York—M.	
Bookman. New York.	M.	Modern Priscilla. Boston.	M.
Boston Herald.	D.	Motor. New York.	M.
Buffalo Express.	D.	Motor Boat. New York.	M.
Canadian-American. Chicago.	W.	Nation. New York.	W.
Cassier's Magazine. New York.	M.	New Orleans Picayune. Semi-W.	
Century. New York.	M.	New York Evening Post.	D.
Chautauquan. New York.	M.	New York Herald.	D.
Chicago Tribune.	D.	New York Journal of Commerce.	D.
*Christian Register. Boston.	W.	New York Times.	D.
*Christian Science Monitor.		North American Review. N.Y.	M.
	Boston—D.	Overland Monthly. San Francisco.	
*Christian Science Sentinel.		Outing. New York.	M.
	Boston—W.	Outlook. New York.	W.
Cincinnati Enquirer.	W.	Out West. Los Angeles, Cal.	M.
Cleveland Plaindealer.	W.	Philadelphia Record.	D.
Concrete. Detroit.	M.	*Pitman's Journal. New York.	Q.
Cosmopolitan. New York.	M.	Popular Science Monthly. New York.	
Country Life in America. N.Y.		Printing Art. Cambridge, Mass.	W.
	Semi-M.	Protestant Magazine. Washington.	Q.
Delineator. New York.	M.	Public. Chicago.	W.
Detroit Free Press.	D.	Railway and Locomotive Engin-	
Electric Railway Journal. N.Y.	W.	eering. New York.	M.
*Desert Evening News.		*Raivaaja. Fitchburg, Mass.	D.
	Salt Lake City—D.	Review of Reviews. New York.	M.
Electrical World. New York.	W.	St. Nicholas. New York.	M.
Elementary School Teacher.		*Saints' Herald. Lamonie, Ia.	W.
	Chicago—M.	School Review. Chicago.	M.
Engineering and Mining Journal.		Science. New York.	W.
	New York—W.	Scientific American. New York.	W.
Engineering Record. New York.	W.	Scientific American Supplement.	
Everybody's Magazine. N.Y.	M.	New York—W.	
Forest and Stream. New York.	W.	Scottish-American. New York.	W.
Forum. New York.	M.	*Shorthand Writer. Chicago.	M.
Fruit Grower. St. Joseph, Mo.	M.	Scribner's. New York.	M.
Garden Magazine. New York.	M.	Staats Zeitung. New York.	D.
Good Housekeeping.		*Stone. New York.	M.
	Springfield, Mass.—M.	*Tailor. Bloomington, Ill.	M.
*Gospel Trumpet. Anderson, Ind.	W.	*Theosophical Quarterly. New York.	
Green Bag. Boston.	M.	Theosophical Path.	
Harper's Bazar. New York.	M.	Point Loma, Cal.—M.	
Harper's Monthly. New York.		Typewriter and Phonographic World.	
Harper's Weekly. New York.		New York—M.	
*Herald of Life. New Haven.	W.	Typographical Journal.	
Inland Printer. Chicago.	M.	Indianapolis—M.	
Iron Trade Review. Cleveland.	W.	*Word. New York.	M.
Ladies' Home Journal. Phila.	M.	World's Work. New York.	M.
Lippincott's Magazine. Phila.	M.		
Living Age. Boston.	W.		
Los Angeles Herald.	W.		
Maccabean. New York.	M.		
Machinery Monthly. New York.			
McClure's Magazine. New York.	M.		
Metal Industry. New York.	M.		
*Mirror. St. Louis.	W.		

Foreign.

Kolnische Zeitung. Cologne.	W.
Gartenlaube. Leipsic.	W.
Illustrierte Zeitung. Leipsic.	W.
Le Matin. Paris.	D.
Le Monde Illustré. Paris.	W.

COLLEGE STREET BRANCH

Canadian.		
*Calgary Morning Albertan.	D.	British Empire Review. W.
Canada West. Winnipeg.	M.	British Weekly. London. W.
*Canadian Bee Journal.		Builder. London. W.
	Brantford—M.	*Cape Times. Capetown, S.A. W.
Canadian Pictorial. Montreal.	W.	Cassell's Magazine. London. M.
*Catholic Record. London.	W.	Chambers's Journal. Edinburgh. M.
*Forester. London.	M.	Chums. London. M.
Hamilton Spectator.	D.	Contemporary Review. London. M.
*Jewish Eagle. Montreal.	D.	Cornhill. London. M.
*Kingston Whig.	D.	Dublin Freeman. W.
*Labor Gazette. Ottawa.	M.	Edinburgh Scotsman. W.
London Advertiser.	D.	Empire Review. London. Q.
Montreal Star.	D.	Engineering. London. W.
Montreal Witness.	D.	English Illustrated Magazine. London—M.
Nouvelle France. Quebec.	M.	English Mechanic. London. W.
Queen's Quarterly. Kingston.		Family Herald. London. M.
*Regina Citizen.	W.	Fortnightly Review. London. M.
*Regina Morning Leader.	D.	Garden. London. W.
Toronto:		Girl's Own. London. M.
*Canadian Churchman.	W.	Glasgow Herald. W.
Canadian Collier's.	W.	Graphic. London. W.
Canadian Courier.	W.	*Herald of the Cross. London. M.
Canadian Defence.	Semi-M.	*Herald of the Golden Age. London—Q.
Canadian Magazine.	M.	Illustrated London News. W.
Canadian Mining Journal.	Semi-M.	Knowledge and Illustrated Scientific News. London. M.
Canadian Poultry Review.	M.	Lady's Pictorial. London. W.
*Catholic Register.	W.	Lancet. London. W.
*China's Millions.	M.	Literary World. London. M.
*Christian Guardian.	W.	Lloyd's Weekly News. London.
Delineator.	M.	London Daily Chronicle.
*East and West.	W.	Manchester Guardian. D.
La Tribuna Canada.	W.	Musical Herald. London. M.
Office and Field.	M.	Nation. London. W.
*Orange Sentinel.	W.	National Review. London. M.
*Pioneer.	W.	*Navy. London. M.
Saturday Night.	W.	Nineteenth Century and After. London—M.
*Square Deal.	W.	Pall Mall Magazine. London. M.
*War Cry.	W.	Philatelic Journal. London. M.
Westminster.	M.	Plumber and Decorator. London. M.
Vancouver Province.	D.	Practitioner. London. M.
Victoria Colonist.	D.	Public Opinion. London. W.
*Western Home Monthly. Winnipeg.		Punch. London. M.
Winnipeg Free Press.	D.	Quiver. London. M.
British and Colonial.		
Animal World. London.	M.	Review of Reviews. London. M.
Athenaeum. London.	W.	Saturday Review. London. W.
Australasian. Melbourne.	W.	Spectator. London. W.
Blackwood's. Edinburgh.	M.	Sphere. London. W.
Bookman. London.	M.	Strand. London. M.
Boy's Own Paper. London.	W.	*Times of Natal. Maritzburg, S.A. W.

Contemporary Review. London.	M.	Boston Transcript.	D.
English Illustrated Magazine.		Catholic World. New York.	M.
	London—M.	Century. New York.	M.
Family Herald. London.	M.	*Christian Science Monitor.	
Fortnightly Review. London.	M.		Boston—D.
Girl's Own. London.	M.	*Christian Science Sentinel.	
Graphic. London.	W.		Boston—W.
*Herald of the Cross. London.	M.	Country Life in America.	
*Herald of the Golden Age.			New York—Semi-M.
	London—Q.	Electrical Review. Chicago.	W.
Illustrated London News.	W.	Electrical Review. Chicago.	W.
Lady's Pictorial. London.	W.		Chicago—M.
Literary World. London.	M.	Everybody's Magazine. N.Y.	M.
Lloyd's Weekly News. London.		Garden Magazine. New York.	M.
London Standard.	D.	Good Housekeeping. Springfield.	M.
*Musical Herald. London.	M.	Harper's Bazar. New York.	M.
Nation. London.	W.	Harper's Monthly. New York.	
Nineteenth Century and After.		Harper's Weekly. New York.	
	London—M.	Ladies' Home Journal. Phila.	M.
Pall Mall Magazine. London.	M.	Literary Digest. New York.	W.
Public Opinion. London.	W.	Living Age. Boston.	W.
Punch. London.	W.	Nation. New York.	W.
Queen. London.	W.	New York Times.	D.
Quiver. London.	M.	North American Review. N.Y.	M.
Review of Reviews. London.	M.	Outlook. New York.	W.
Scotsman. Edinburgh.	W.	*Public. Chicago.	W.
Spectator. London.	W.	Review of Reviews. New York.	M.
Strand. London.	M.	St. Nicholas. New York.	M.
Sunday at Home. London.	M.	Scientific American. New York.	W.
T. P.'s Magazine. London.	M.	Scientific American Supplement.	
Times. London.	W.		New York—W.
*War Cry. London.	W.	Scribner's Magazine. N.Y.	M.
Westminster Gazette. London.	W.	Springfield (Mass). Republican.	D.
Woman at Home. London.	M.	Stonecutter's Journal.	
			Washington, D.C.—M.
		Studio (International Edition).	
			New York—M.
American.		*Theosophical Quarterly. New York.	
American Homes and Gardens.		World's Work. New York.	M.
	New York—M.	Youth's Companion. Boston.	W.
Atlantic Monthly. Boston.			

RIVERDALE BRANCH

Canadian.		Canadian Magazine.	M.
*Canadian Bee Journal. Brantford.		Delineator.	M.
	M.	*Lance.	M.
*Catholic Record. London.	W.	*Orange Sentinel.	W.
Farmer's Advocate. London.	M.	*Trinity University Review.	M.
Hamilton Spectator.	D.	*War Cry.	W.
*Labor Gazette. Ottawa.	M.	Westminster Magazine.	M.
Montreal Herald.	D.	Wide World. Montreal.	W.
Toronto:		Winnipeg Free Press.	D.
Canadian Home Journal.	M.		

British and Colonial.

Animal World. London. M.
 Athenaeum. London. W.
 Belfast Northern Whig. W.
 Boy's Own Paper. London. M.
 British Weekly. London. M.
 Cassell's Magazine. London. M.
 Chambers's Journal. Edinburgh. M.
 Chums. London. M.
 Contemporary Review. London. M.
 Engineering. London. W.
 English Illustrated Magazine. London—M.
 English Mechanic. London. W.
 Family Herald. London. M.
 Fortnightly Review. London. M.
 Girl's Own. London. M.
 Graphic. London. W.
 *Herald of the Golden Age. London—Q.
 Illustrated London News. W.
 Liverpool Post. W.
 Lloyd's Weekly News. London. M.
 London Daily Chronicle. M.
 Manchester Guardian. D.
 Pall Mall Magazine. London. M.
 Plumber and Decorator. London. M.
 Public Opinion. London. W.
 Punch. London. W.
 Queen. London. W.
 Quiver. London. M.
 Review of Reviews. London. M.
 Scotsman. Edinburgh. W.
 Spectator. London. W.
 Strand. London. M.
 Sunday at Home. London. M.
 Times. London. W.
 *War Cry. London. W.
 Westminster Gazette. London. W.
 Windsor Magazine. London. M.

American.

American Homes and Gardens. New York—M.
 Boston Herald. D.
 Century. New York. M.
 Chicago Tribune. D.
 *Christian Science Monitor. Boston—D.
 *Christian Science Sentinel. Boston—W.
 Elementary School Teacher. Chicago—M.
 Everybody's Magazine. N.Y. M.
 Forest and Stream. New York. W.
 Garden Magazine. New York. M.
 Good Housekeeping. Springfield. M.
 Harper's Bazar. New York. M.
 Harper's Monthly. New York.
 Harper's Weekly. New York.
 Ladies' Home Journal. Phila. M.
 Living Age. Boston. W.
 McClure's Magazine. New York. M.
 Modern Priscilla. Boston. M.
 Nation. New York. W.
 New York Sun. D.
 New York Times. D.
 North American Review. N.Y. M.
 Popular Mechanics. Chicago. M.
 *Public. Chicago. W.
 Review of Reviews. New York. M.
 St. Nicholas. New York. M.
 Scientific American. New York. W.
 Scottish-American. New York. W.
 Scribner's Magazine. N.Y. M.
 Stone. New York. M.
 Studio (International Edition). New York—M.
 *Theosophical Quarterly. New York.
 World's Work. New York. M.
 Youth's Companion. Boston. W.

QUEEN AND LISGAR BRANCH**Canadian.**

*Canadian Bee Journal. Brantford. M.
 *Catholic Record. London. W.
 Hamilton Times. D.
 *Labor Gazette. Ottawa. M.
 London Advertiser. D.
 Montreal Star. D.
 *Royal Templar. Hamilton. M.
 Toronto:
 Canadian Courier. W.
 Canadian Engineer. M.
 Canadian Home Journal. M.
 Canadian Magazine. M.

*Catholic Register.	W.	American.	
*China's Millions.	M.	American Cabinetmaker and	
Delineator.	M.	Upholsterer. New York.	W.
*Lance.	W.	American Homes and Gardens.	
*Orange Sentinel.	W.		New York—M.
Saturday Night.	W.	American Machinist. New York.	W.
*Square Deal.	M.	Century. New York.	M.
Trinity University Review.	M.	Chicago Tribune.	D.
*War Cry.	W.	*Christian Science Monitor.	
Winnipeg Free Press.	D.		Boston—D.
		*Christian Science Sentinel.	
			Boston—W.
British and Colonial.		Country Life in America.	
Belfast News.	W.		New York—Semi-M.
Blackwood's. Edinburgh.	M.	Electrical Review and Western	
Boy's Own Paper. London.	W.	Electrician. Chicago.	W.
British Weekly. London.		Everybody's Magazine. N.Y.	M.
Cassell's Magazine. London.	M.	Garden Magazine. New York.	M.
Chambers's Journal. Edinburgh.	M.	Good Housekeeping. Springfield.	M.
Chums. London.	M.	Harper's Bazar. New York.	M.
Engineer. London.	M.	Harper's Monthly. New York.	
Engineering. London.	W.	Harper's Weekly. New York.	
English Illustrated Magazine.		Ladies' Home Journal. Phila.	M.
	London—M.	Lippincott's Magazine. Phila.	M.
Family Herald. London.	M.	Metal Worker. New York.	W.
Girl's Own. London.	M.	Modern Priscilla. Boston.	M.
Glasgow Herald.	W.	New York Herald.	D.
Graphic. London.	W.	New York Sun.	D.
*Herald of the Cross. London.	M.	Popular Mechanics. Chicago.	M.
Illustrated London News.	W.	*Public. Chicago.	W.
Live Stock Journal. London.	W.	Review of Reviews. New York.	M.
Lloyd's Weekly News. London.		St. Nicholas. New York.	M.
London Daily Telegraph.		Scientific American. New York.	W.
Pall Mall Magazine. London.	M.	Scientific American Supplement.	
Punch. London.	W.		New York—W.
Queen. London.	W.	Scottish-American. New York.	W.
Quiver. London.	M.	Scribner's Magazine. New York.	M.
Review of Reviews. London.	M.	Stone. New York.	M.
Strand. London.	M.	Stonecutters' Journal.	
Sunday at Home. London.	M.		Washington, D.C.—M.
Times. London.	W.	*Theosophical Quarterly. New York.	
Woman at Home. London.	M.	World's Work. New York.	M.

WESTERN BRANCH

Canadian.		Delineator.	M.
Canadian Pictorial. Montreal.	W.	Saturday Night.	W.
Farmer's Advocate. London.	M.	*Square Deal.	M.
Montreal Star.	D.		
Toronto:		British and Colonial.	
*Ancient Forester.	M.	Belfast News.	W.
Canadian Home Journal.	M.	Boy's Own Paper. London.	W.
Canadian Magazine.	M.	Cassell's Magazine. London.	M.

Chambers's Journal. Edinburgh.	M.	Buffalo Express.	D.
Chums. London.	M.	Century. New York.	M.
Engineering. London.	W.	*Christian Science Monitor.	
English Illustrated Magazine.		Boston—D.	
London—M.		*Christian Science Sentinel.	
English Mechanic. London.	W.	Boston—W.	
Family Herald. London.	M.	Detroit Free Press.	D.
Girl's Own. London.	M.	Everybody's Magazine. N.Y.	M.
Glasgow Herald.	W.	Fruit Grower. St. Joseph, Mo.—	M.
Graphic. London.	W.	Garden Magazine. New York.	M.
*Herald of the Cross. London.	M.	Good Housekeeping. Springfield.	M.
*Herald of the Golden Age.		Harper's Bazar. New York.	M.
London—Q.		Harper's Monthly. New York.	
Illustrated London News.	W.	Harper's Weekly. New York.	
Lloyd's Weekly News. London.		Ladies' Home Journal. Phila.	M.
London Standard.	D.	Lippincott's Magazine. Phila.	M.
Pall Mall Magazine. London.	M.	Literary Digest. New York.	W.
Punch. London.	W.	Locomotive Fireman.	
Quiver. London.	M.	Indianapolis—M.	
Review of Reviews. London.	M.	Metal Worker. New York.	W.
Strand. London.	M.	Modern Priscilla. Boston.	M.
Sunday at Home. London.	M.	New York Tribune.	D.
Times. London.	W.	North American Review. N.Y.	M.
Windsor Magazine. London.	M.	Railway & Locomotive Engineering.	
		New York—M.	
American.		Review of Reviews. New York.	M.
American Cabinetmaker and		St. Nicholas. New York.	M.
Upholsterer. New York.	W.	Scientific American. New York.	W.
American Homes and Gardens.		Scribner's Magazine. N.Y.	M.
New York—M.		*Theosophical Quarterly. New York.	
American Machinist. New York.	W.	World's Work. New York.	M.

DEER PARK BRANCH

Canadian.		Punch. London.	W.
Montreal Star.	D.	Quiver. London.	M.
Toronto:		Review of Reviews. London.	M.
Canadian Courier.	W.	Spectator. London.	W.
Canadian Home Journal.	M.	Times. London.	W.
Canadian Magazine.	M.		
Chums.	M.	American.	
Delineator.	M.	American Homes and Gardens.	
		New York—M.	
British and Colonial.		Atlantic Monthly. Boston.	
Boy's Own. London.	M.	Century. New York.	M.
British Weekly. London.		*Christian Science Monitor.	
Chambers's Journal. Edinburgh.	M.	Boston—D.	
Contemporary Review. London.	M.	Everybody's Magazine. N.Y.	M.
Fortnightly Review. London.	M.	Garden Magazine. New York.	M.
Girl's Own. London.	M.	Good Housekeeping. Springfield.	M.
Illustrated London News.	W.	Harper's Bazar. New York.	M.
Nation. London.	W.	Harper's Magazine. New York.	M.
		Harper's Weekly. New York.	

Ladies' Home Journal. Phila.	M.	*Public. Chicago.	W.
Modern Priscilla. Boston.	M.	Review of Reviews. New York.	M.
New York Evening Post.	D.	St. Nicholas. New York.	M.
New York Sun.	D.	Scientific American. New York.	W.
Outlook. New York.	W.	Scribner's Magazine. New York.	M.
Popular Mechanics. Chicago.	M.	Youth's Companion. Boston.	W.

MUNICIPAL REFERENCE LIBRARY

Canadian.

*Canadian Municipal Journal.	
	Montreal—M.
*Canada Gazette. Ottawa.	W.
Municipal World. St. Thomas.	M.
Toronto:	
*Civic Guild Bulletin.	M.
*Globe.	D.
*Mail and Empire.	D.
*News.	D.
*Ontario Gazette.	W.
*Star.	D.
*Telegram.	D.
*World.	D.

British and Colonial.

*Christchurch Press.	
	Christchurch, N.Z.—W.
Financial Review of Reviews.	
	London—M.
Local Government Review.	
	London—M.
Municipal Journal. London.	W.
*Secretary. London.	M.
Town Planning Review.	
	Liverpool.—Q.

American.

*American Architect. New York.	W.
*American City. New York.	M.
*American Forestry. Wash.	M.
*American Historical Review.	
	New York—Q.

*American Journal of Sociology.

	Chicago—Bi-M.
*Astrophysical Journal. Chicago.	M.
*American Naturalist. N.Y.	M.
City Hall—Midland Municipalities.	
	Marshalltown, Iowa—M.
*City Record. New York.	W.
*Craftsman. New York.	M.
*Current Literature. New York.	M.
*Daily Consular and Trade Reports.	
	Washington—D.
*Engineering News. New York.	W.
*Harper's Weekly. New York.	W.
*Landscape Architecture.	
	Harrisburg, Pa.—Q.
*Magazine of History, with Notes and Queries. New York.	M.
*Monist. Chicago.	Q.
*Nation. New York.	W.
*National Civic Federation Review.	
	New York.
National Municipal Review.	
	Philadelphia—Q.
*New York Sun.	D.
*New York Times Book Review.	W.
*Print-Collector's Quarterly. N.Y.	
*Publisher's Weekly. New York.	
*Records of the Past.	
	Washington—M.
*Sewanee Review.	
	Sewanee, Tenn.—Q.
*Single Tax Review. N.Y.	Bi-M.
*Studio (International Edition).	
	New York—M.
Survey. Chicago.	W.

List of Periodicals and Publications of Learned Institutions in Reference Library.

- Almanac de Gotha. Gotha. A.
 Alt-Celtischer Sprachschatz. Leipzig.
 American Anthropologist. Washington—Q.
 American Architect. New York. W.
 *American Association for International Conciliation. Bulletins.
 American Association for Labor Legislation. Bulletins, etc.
 American City. New York. M.
 American Dialect Society. Notes.
 American Economic Review. Princeton, N.J.—M.
 American Ethnological Society. Publications.
 American Folk Lore Journal. Q.
 American Forestry. New York. M.
 American Historical Association. Report.
 American Historical Review. New York—Q.
 American Library Association. Bi-M.
 American Naturalist. New York. M.
 American Numismatic and Archaeological Society, New York. Report.
 American Numismatic Society Journal. New York. Q.
 American Statistical Association Journal. Boston. Q.
 Annals American Academy of Political and Social Science. Philadelphia—Q..
 Arbor. Toronto (University Press). M.
 Annals of Botany. Q.
 Antiquary. London. M.
 *Applied Science (Engineering Society University of Toronto). M.
 Archaeologia Cambrensis. London—Q.
 Archaeological Journal. London. Q.
 Architectural Record. New York. M.
 Art Journal. London. M.
 *Association of Ontario Land Surveyors. Reports, etc.
 *Astronomical and Physical Society, Toronto. Transactions.
 Astrophysical Journal. Chicago. M.
 Athenaeum. London. W.
 Auk. New York. Q.
 Australian Insurance and Banking Record. Melbourne. M.
 Baptist Historical Society, London. Transactions.
 Biblical Archaeological Society, London. Transactions, etc.
 Bibliography of Social Science. Chicago—M.
 *Bibliotheca e Archivo Publico de Para. Reports, etc.
 *Biblioteca Municipal de Guayaquil. Reports, etc.
 *Board of Education, Toronto. Proceedings, Reports, etc.
 *Board of Trade, Toronto. Reports, etc.
 Book Review Digest. Minneapolis. A.
 Bookseller. London. W.
 Boston Herald. D.
 Boston Transcript. D.
 Botanical Magazine. London. M.
 *Bowdoin College, Brunswick, Me. Calendars, etc.
 British Association for the Advancement of Science. Reports, etc.
 British Columbia Natural History Society.
 British Museum. Catalogues.
 British Numismatic Journal. London—A.
 Buffalo Historical Society. Transactions.
 Bureau of American Ethnology. Bulletins.
 Bureau of Municipal Research, New York. Reports, etc.
 *Bureau of Provincial Information, British Columbia. Bulletins, Reports, etc.
 *California Library Association. Reports, etc.
 Canadian Antiquarian and Numismatic Journal. Montreal. Q.
 Canadian Entomologist. Guelph. M.
 *Canadian Folk Lore Society, Toronto. Proceedings, etc.

- Canadian Forestry Journal. Ottawa—M.
 *Canadian Institute. Toronto.
 *Canadian Military Institute, Toronto. Reports, etc.
 Canadian Official Railway Guide. Montreal—M.
 *Canadian Patent Office Record.
 *Carnegie Hero Fund Commission. Reports, etc.
 *Census Department, Ottawa. Reports, etc.
 *Central Experimental Farm, Ottawa. Reports, etc.
 *Central Railway and Engineering Club. Toronto—M.
 Century. New York. M.
 Champlain Society. Toronto. A.
 Chemical World. London. M.
 Cheetham Society, London. Transactions.
 *Chicago University. Calendar, Report, etc.
 *Children's Aid Society, Toronto. Reports, etc.
 Church Quarterly Review. London.
 Cincinnati Society Natural History.
 *Civic Guild, Toronto. Bulletins.
 Colonial Society of Massachusetts. Publications.
 *Commission of Conservation, Ottawa. Reports, etc.
 Connoisseur. London. M.
 *Cornell University. Calendar, Report, etc.
 Craftsman. New York. M.
 Cumulative Book Index. Minneapolis—A.
 Current Literature. New York. M.
 Curtis's Botanical Magazine. London—M.
 Decorative Art. London. M.
 *Department of Agriculture, Ontario. Reports, etc.
 *Department of Agriculture, Ottawa. Reports, etc.
 *Department of Commerce & Labor, Ottawa. Reports, etc.
 *Department of Commerce & Labor, Washington. Reports, etc.
 *Department of Education, Manitoba. Reports, etc.
 *Department of Education, Ontario. Reports, etc.
 *Department of Education, Washington. Reports, etc.
 *Department of Forestry, Ottawa. Reports, etc.
 *Department of Interior, Ottawa. Reports, etc.
 *Department of the Interior, Washington. Reports, etc.
 *Department of Lands, Forests and Mines, Ontario. Reports, etc.
 *Department of Mines, British Columbia. Reports, etc.
 *Department of Mines, Ottawa. Reports, etc.
 *Detroit Public Library. Bulletin. Drama. New York. Q.
 Dublin Review. Q.
 Early English Text Society. Transactions.
 Economic Journal. London. Q.
 Economic Review. London. Q.
 Egypt Exploration Fund. London—A.
 Engineering. London. W.
 Engineering News. New York. W.
 English Historical Review. London—Q.
 English Review. London. M.
 Englishwoman. London. M.
 Financial Review of Reviews. London—M.
 Folk Lore. London. Q.
 Genealogical & Biographical Record. New York—Q.
 *Geographic Board of Canada.
 Geographical Journal. London. M.
 Geographical Society of Quebec.
 *Geological Society, London. Journal.
 *Geological Survey of Canada. Reports.
 *Government Distribution Office, Ottawa. Reports, etc.
 Hakluyt Society. Publications.
 *Hamilton Scientific Association. Irregular.
 Harleian Society. Visitations, Registers, etc.
 Harper's Monthly. New York.
 Harper's Weekly. New York.
 Hartford Seminary Record. Q.
 Harvard Graduates' Magazine. Q.
 Harvard Theological Review. Q.
 *Harvard University. Calendar, etc.
 Hibbert Journal. London. Q.
 Historical Society of Lancashire and Cheshire. Publications.
 Ibis. London. Q.

- *Illinois University. Bulletins, etc.
Index of Archaeological Papers. A.
London.
- Indian Rights Association.
Philadelphia—A.
- *Indiana Library Occurrent.
- *International Waterways Commission, American Section. Reports, etc.
- International Waterways Commission, Canadian Section. Reports, etc.
- Irish Review. London. M.
- Irish Text Society, Dublin. Transactions, etc.
- Johns Hopkins University. Historical Studies. Baltimore—Q.
- Journal of Actuaries. London. M.
- Journal of American Folk Lore. Q.
- Journal of Chemical Society.
London—M.
- Journal of Political Economy.
Chicago—M.
- Journal of Sociology. Chicago. M.
- *Kaiserlich-Japanischen University, Tokio, Japan.
- *Labor Gazette. Ottawa. M.
- Landscape Architecture.
New York—Q.
- La Nuova Antologia. Rome. M.
- *Laval University, Quebec. Calendar.
- *Lennox and Addington Historical Society, Napanee. Papers and Records.
- Les Arts. Paris. M.
- *Lewis Institute, Chicago. Bulletins.
- Librarian. London. M.
- Library. London. Q.
- Library Association Record.
London—M.
- Library Index. New York. A.
- Library Journal. New York. M.
- Library World. London. M.
- L'Illustration. Paris. W.
- *Literary and Historical Society of Quebec. Transactions.
- Local Government Review.
London—M.
- *Lowell Observatory, Flagstaff, Arizona.
- Magazine of History. New York. M.
- Malone Society, London. Transactions.
- *Manitoba Historical and Scientific Association. Transactions.
- Massachusetts Historical Society, Boston. Collections and Proceedings.
- *Michigan State Board of Health, Lansing. Bulletins.
- *Minnesota Historical Society. Collections.
- *Militia List, Ottawa.
- *Missisquoi County Historical Society. Transactions.
- Moderne Kunst. Leipsic. M.
- Monist. Chicago. Q.
- Nation. London. W.
- Nation. New York. W.
- National Conference of Charities and Correction, Philadelphia.
- National Education Association. Reports.
- *National Electric Lamp Association. Bulletin.
- National Geographic Magazine.
Washington—M.
- *National Museum, Melbourne, Australia. Reports, etc.
- Naturaliste Canadien (Le).
Quebec—M.
- *Navy List. London. Q.
- Navy Records. London. A.
- *New Brunswick Historical Society. Transactions.
- *New Brunswick Natural History Society. Transactions.
- New Shakespeareana.
Westfield, N.J.—M.
- *New York Board of Education. Reports, etc.
- New York Genealogical & Biographical Record—Q.
- *New York Public Library. Bulletins.
- *New York State Department of Education. Reports, etc.
- *New York University. Calendar, etc.
- *New Zealand Statutes.
- *Niagara Historical Society. Transactions.
- *Northwestern University. Calendar, etc.
- Notes and Queries. London. W.
- *Nova Scotia Historical Society. Collections.
- *Nova Scotian Institute of Natural Science. Proceedings.
- Novitiates Zoologicae. London. M.

- *Ontario Agricultural College, Guelph. Bulletins, etc.
- *Ontario Gazette. Toronto.
- *Ontario Historical Society, Toronto. Transactions.
- *Ontario Land Surveyors. Proceedings.
- *Ontario Library Association. Reports, etc.
- *Ontario Society of Architects. Reports, etc.
- *Patent Gazette (Official). Washington.
- *Patent Journal (Official), London.
- *Patents. London. M.
- Parliamentary:
- *Debates of the House of Commons, Ottawa.
- *Debates of the Senate, Ottawa.
- *Journals of the House of Commons, Ottawa.
- *Journals of the Legislative Assembly of Alberta.
- *Journals of the Legislative Assembly of British Columbia.
- *Journals of the Legislative Assembly of Manitoba.
- *Journals of the Legislative Assembly of Ontario.
- *Journals of the Legislative Assembly of Saskatchewan.
- *Journals of the Senate, Ottawa.
- *Public Accounts of Saskatchewan.
- *Sessional Papers, Dominion of Canada.
- *Sessional Papers, Ontario.
- *Statutes of Alberta.
- *Statutes of British Columbia.
- *Statutes of the Dominion of Canada.
- *Statutes of Manitoba.
- *Statutes of Ontario.
- *Statutes of Saskatchewan.
- Philological Society, London. Transactions.
- Poet Lore. Boston. Q.
- Poetry Review. London. M.
- Portfolio. London. A.
- *Print-Collector's Quarterly. New York.
- Prisoners' Aid Association Review. New York—M.
- Progress. London. Q.
- *Provincial Board of Health, Ontario. Reports, etc.
- Public Libraries. Chicago. M.
- Railway and Steamboat Guide. Toronto—W.
- Reader's Guide. Minneapolis. A.
- Recherches Historiques. Levis. M.
- Re-union Magazine. London. M.
- Revue Canadienne. Montreal. M.
- Revue des Deux Mondes. Paris—Bi-M.
- Round Table. London. Q.
- *Royal Astronomical Society, Toronto. Journal.
- Royal Colonial Institute Journal. London—M.
- Royal Historical Society, London. Transactions.
- *Royal Military College Club, Canada. Quebec.
- *Royal Society, Canada. Proceedings, etc.
- Royal Statistical Society Journal. Science Progress. London. Q.
- Scottish History Society. Publications.
- Scottish Text Society. Transactions.
- Scribner's Magazine. N.Y. M.
- *Secular Thought. Toronto. M.
- Sewanee Review. Sewanee, Tenn. Q.
- *Silk Association of America. Reports, etc.
- Single Tax Review. N.Y. Bi-M.
- *Smithsonian Institution, and United States National Museum Reports, Washington. Bulletins.
- Society of Antiquaries. Newcastle-on-Tyne.
- *Society of Architects, Toronto. Reports, etc.
- Society of Arts, London. Journal.
- Society of Comparative Legislation, London. Journal.
- South Carolina Genealogical & Historical Magazine. Charleston. Q.
- Spalding Club, Aberdeen. Transactions.
- Speaker. New York. Q.
- Stadtebau, Der. Berlin. M.
- Studio. New York edition. M.
- Surtees Society, London. Publications.
- *St. Louis Public Library. Bulletins.
- Texas State Historical Association. Texts and Studies. Cambridge University.
- *Toronto University Studies.

- *Trinity University, Toronto. Calendar.
- Ulster Journal of Archaeology. Q.
- *Union of Canadian Municipalities. Proceedings, etc.
- *United Empire Loyalist Association, Ontario. Reports, etc.
- *United States Bureau of Fisheries. Reports, etc.
- *United States Bureau of Statistics. Reports, etc.
- *United States Coast and Geodetic Survey. Reports, etc.
- *United States Daily Consular and Trade Reports. Washington.
- University Magazine. Toronto. Q.
- *University of Illinois, Urbana. Bulletin.
- University of Toronto Monthly.
- Veterinary Journal. London. M.
- Viking Club. London. A.
- Vineyard. London. M.
- Virginia Historical Magazine. Richmond—Q.
- *Wisconsin Free Library Commission. Reports, etc.
- *Wisconsin State Historical Society. Transactions.
- *Wisconsin University. Calendar.
- Wisconsin University History Studies.
- *Women's Canadian Historical Society, Toronto. Transactions.
- *Yale University. Calendar, Report, etc.
- *York Pioneers. Annual Report.
- Zoologist. London. M.