

Catalogue

1899



Bicycles...



Queen City Bicycle Works

304 Queen Street West
TORONTO

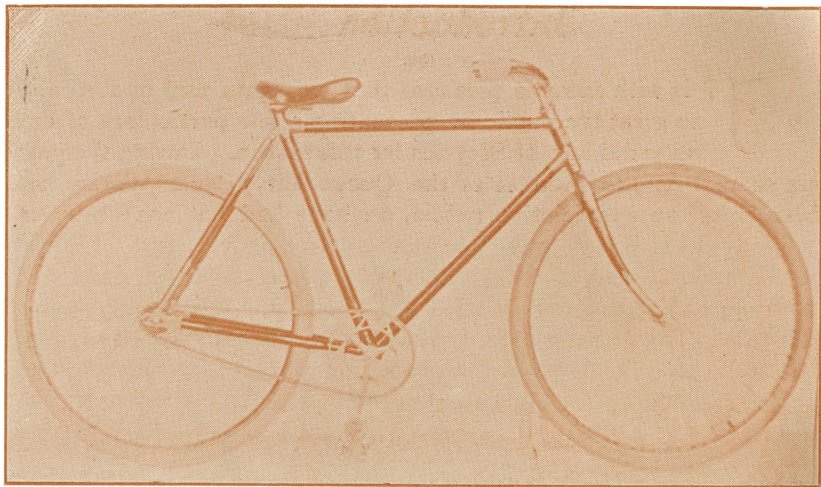
Introduction

••

❖ IT is with extreme pleasure that we again find opportunity to greet the public by presenting a few particulars of our splendid line of Bicycles for this season. During the past six years that the product of the Queen City Cycle Works has been before an appreciative public, we have had but one object in view, and that was to make machines as near perfect as the highest grade material, and skilled workmanship can make them, combined with mechanical features of tried and known merit, entirely leaving out fads. The greatest care is taken with each individual part and the design and finish of our Bicycles are a marvel of perfection, and choice of equipment is almost unlimited.

Yours truly,

QUEEN CITY CYCLE WORKS.



Gent's Special.

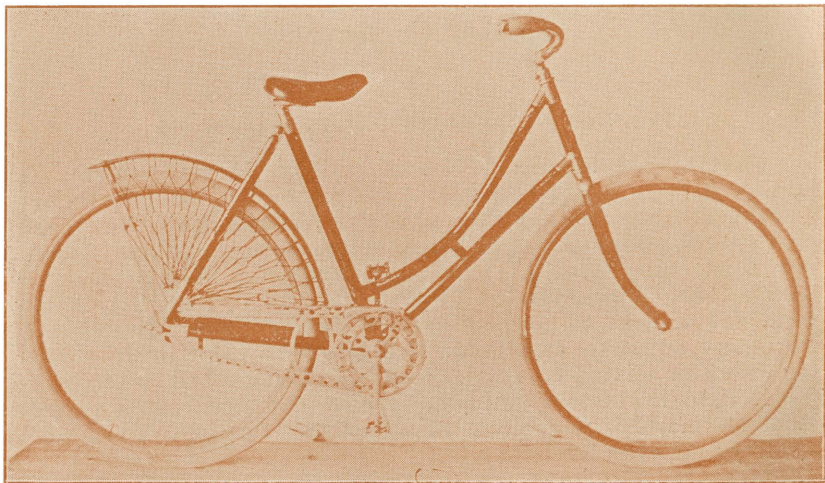
Price, \$65.

"Special," Gentleman's



Positively the Finest Wheel Made in the World

Frame—"Mannesman" English tubing, $1\frac{3}{8}$ head, $1\frac{1}{8}$ top, $1\frac{1}{4}$ bottom and seat mast; rear forks $\frac{7}{8}$ and stays $\frac{3}{4}$ D. All connections and bracket drop forgings, drop $2\frac{1}{2}$ to $3\frac{1}{2}$. Wheels—28 inches, piano wire spokes, plain, twisted or blued, option 30 inch. Tires—Goodrich single tube, G. & J. Detachable, Morgan & Wright single or double tube. Sprockets—22 to 32 front, 7 to 12 rear, detachable front and rear, 40 to 60 teeth extra. Handle Bars—adjustable or stationary, any shape as desired. Cranks— $6\frac{1}{2}$ to 7, fitted with swinging pedals or jointed cranks. Tread $4\frac{1}{2}$. Chain—Ind. best chamfered. Saddle Hunt, or optional. Finish—All connections plated. Enamel—marbleized or plain in all colors. Bearings—finest tool steel, ground after hardening.



Lady's Special.

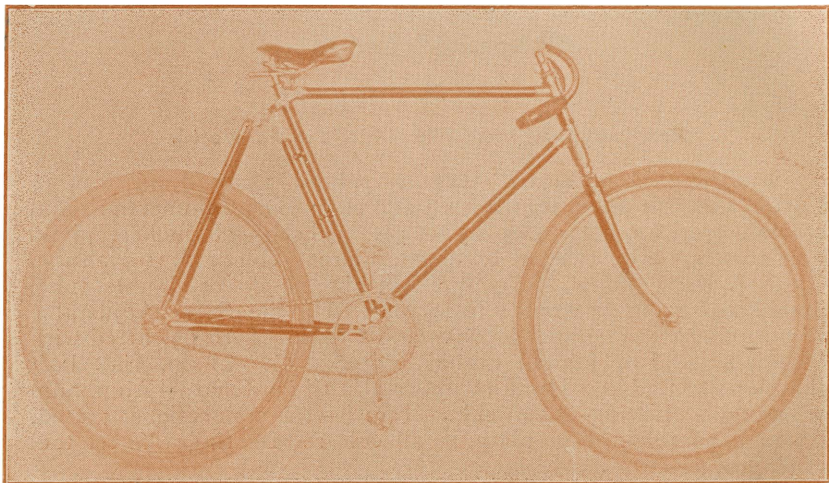
Price, \$65.

"Special" Lady's



Positively the Finest Wheel Made in the World.

Frame—"Mannesman" English tubing, $1\frac{3}{8}$ head, $1\frac{1}{8}$ top, $1\frac{1}{4}$ bottom and seat mast, rear forks $\frac{7}{8}$ and stays $\frac{3}{4}$ " D, all connections and bracket drop forgings, drop $2\frac{1}{2}$ to $3\frac{1}{2}$. Wheels—28 inches, piano wire spokes, plain, twisted or blued. Tires—Goodrich single tube, G. & J. detachable, Morgan & Wright single or double tube. Sprockets—17 to 23 front, 7 to 10 rear. Handle Bars—Adjustable or stationary, any shape as desired. Cranks—6 to $6\frac{1}{2}$, fitted with swinging pedal or jointed cranks. Tread, $5\frac{1}{4}$. Chain, Ind. best chamfered. Saddle—-Hunt, or optional. Chain Guard—Aluminum or metal. Lacing—best silk. Finish—all connections plated. Enamel—marbleized or plain in all colors. Bearings—finest tool steel, ground after hardening.



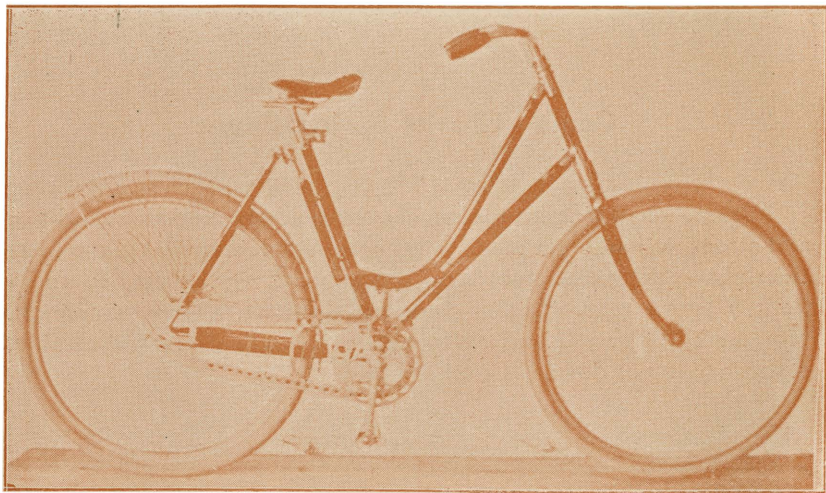
Gent's—Chariot Spring Frame.

Price, \$70.

Gent's—Chariot Spring Frame



Frame—best English tubing, electric welded connections, lightest and strongest joints yet made. Wheels—28 inch, spokes piano wire. Bearings—guaranteed tool steel throughout. Sprockets—20 to 28 front, 7 to 10 rear. Chain—Indianapolis best. Tires—Goodrich, Morgan & Wright, G. & J. detachable. Handle Bars—adjustable, stationary, up or down. Crank, $6\frac{1}{2}$ or 7.



Lady's—Chariot Spring Frame.

Price, \$70.

Lady's—Chariot Spring Frame



Frame—best English tubing, electric welded connections, lightest and strongest joints yet made. Wheels—28 inch, spokes piano wire. Bearings—guaranteed tool-steel throughout. Sprockets—17 to 23, 7 to 10 rear. Chain—Indianapolis best. Tires—Goodrich, Morgan & Wright, G. & J. detachable. Handle Bars—adjustable, stationary. Cranks, 6 or $6\frac{1}{2}$.

Chariot Bicycle Company



THE COMPANY in presenting their patent spring frame wheel to the public, have endeavoured to overcome all the difficulties that exist in the ordinary machine. Our claims are numerous. Riders find in the present form of wheel that when an obstacle is met, the tendency is to either break the forks, crown or axle. With our front spring, when any resisting body is encountered the machine yields by the compression, enabling the rider to easily retain his seat and full control of wheel, while the machine itself is at once relieved of any vibratory motion and the danger of breakage removed. The back spring can be adjusted for weight of any rider by putting catch on lever close in for heavy riders, say 250 lbs., and by bringing catch out to near end for riders say 100 lbs. The action of this spring is guaranteed to give undulatory motion to the rider, removing all the rigidity of the ordinary frame. No action of the spring affects the tension of the chain, as

the wheel is so constructed that the centres of sprockets are always the same, consequently the feet never lose their tread on the pedals. For ladies, the machine is a perfect boon, as it enables them to ride long distances without feeling that severe reaction of tiredness that is involved in the present form of wheel. In this machine they can combine the full pleasure of pedaling with the greatest ease, and no after-effects resulting from a journey of road riding.

This wheel as constructed has been given a fair trial on the roughest roads, by riders who can judge, and has been declared by them to be the easiest riding wheel in the world.

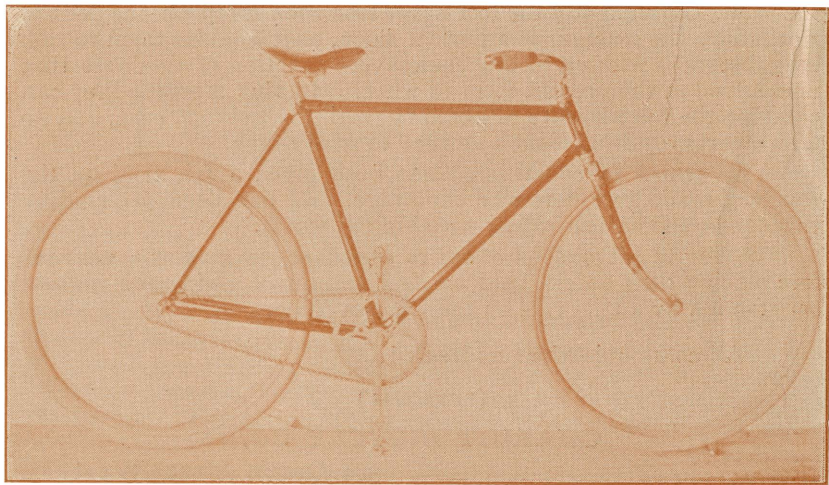
We invite all persons about to purchase, to give us a visit before placing their orders, and we feel certain of giving the highest satisfaction by a trial ride on the Chariot Wheel.

All communications addressed

(PERSONAL)

CHARIOT BICYCLE CO.

304 Queen Street West
Toronto, Can.



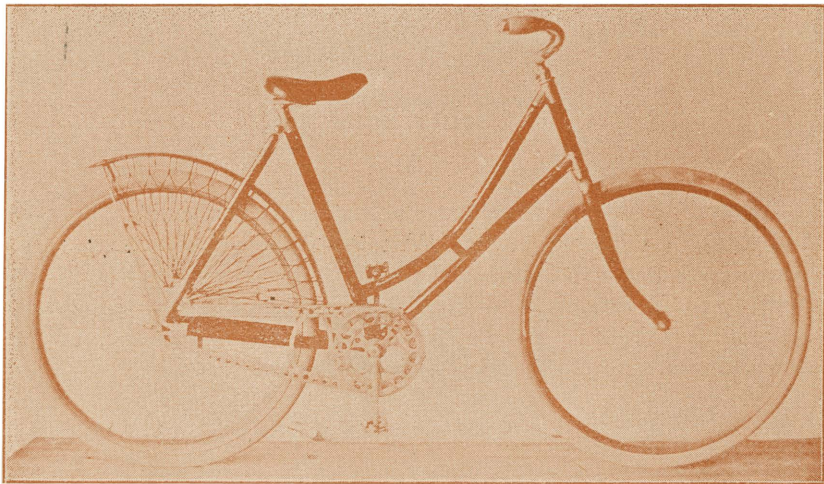
Gent's Rival.

Price, \$45.

Gent's Rival



Frame—best English tubing, electric welded connections, lightest and strongest joints yet made. Wheels—28 inch, spokes piano wire. Bearings—guaranteed tool steel throughout. Sprockets—20 to 28 front, 7 to 10 rear. Chain—Indianapolis best. Tires—Goodrich, Morgan & Wright. Handle Bars—adjustable, stationary, up or down, or ram's horn. Cranks—jointed $6\frac{1}{2}$ to 7.



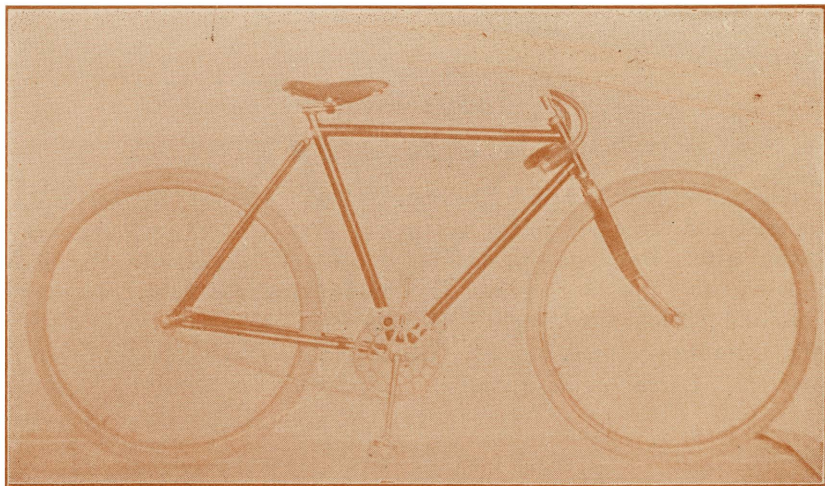
Lady's Rival.

Price, \$45.

Lady's Rival



Frame—best English tubing, electric welded connections, lightest and strongest joints yet made. Wheels—28 inch, spokes piano wire. Bearings—guaranteed tool-steel throughout. Sprockets—17 to 23, 7 to 10 rear. Chain—Indianapolis best. Tires—Goodrich, Morgan & Wright. Handle Bars—adjustable or stationary. Cranks—jointed, 6 or 6½. Chain Guard—metal, bright or enamelled. Lacing—silk or mohair.



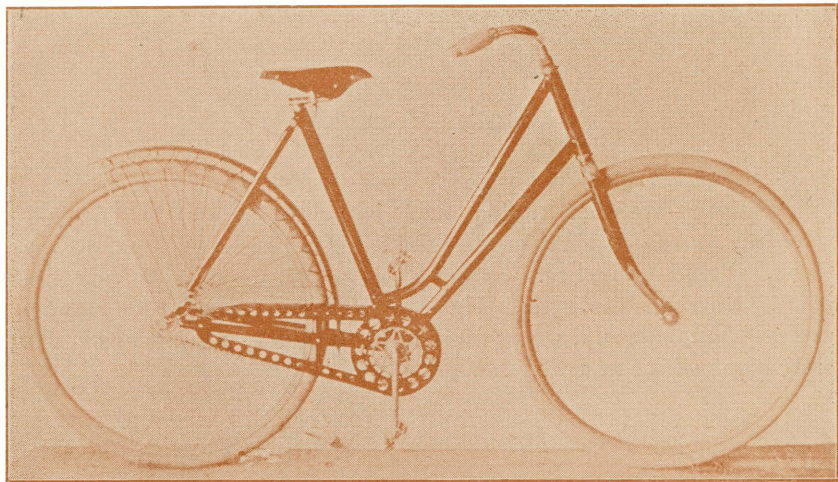
Gent's—Beats All.

Price, \$27.50.

Gent's—Beats All



Frame—Weldless tubing, flush joints throughout. Wheels—28 inch, spokes—highest grade swedged. Cranks—one piece, oval, 7 inch. Tread—5 inches. Sprockets 22 or 26, detachable front and rear. Bearings, tool-steel. Height of Frame, 22 and 23 in. Handle Bars—stationary, upturn or ram-horn. Enamel—wine or black. A reliable machine at a very low price.



Lady's—Beats All.

Price, \$27.50

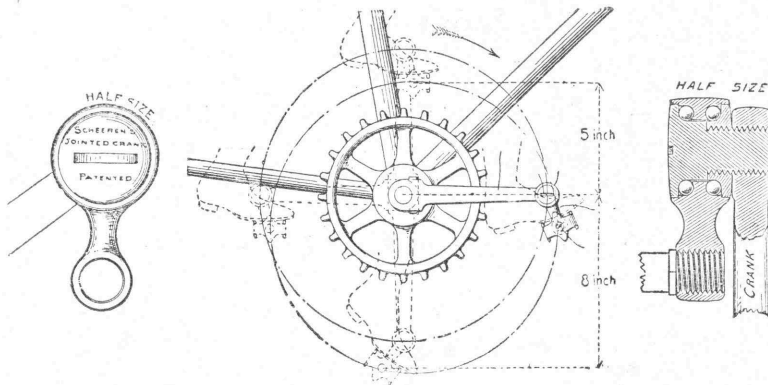
Lady's—Beats All



Frame—weldless tubing, flush joints throughout. Wheels—28 inch, spokes highest grade swedged. Cranks—one piece, oval, 6 in., Tread, $5\frac{1}{4}$ inches. Sprockets—17 to 20, detachable front and rear. Bearings, tool-steel. Handle Bars—Upturn, stationary. Enamel, wine or black. A reliable machine at a very low price.

Jointed Cranks

The Best and most useful Invention on Bicycles ever made.



Some of Its Points over the Old Way of Pedalling:

1. The Jointed Crank swings ACTUALLY and automatically over the dead centre.
2. No more back lash in the chain.
3. No more shaking in the leg by riding over cobble stones. The two joints (one in pedals and one in crank) prevents shaking.
4. The rider's foot is always BELOW and FORWARD of the centre, thus giving more power.
5. Hill climbing is made considerably easier.
6. It also gives more power in pedalling backward.
7. The rider has more control over his wheel in crowded streets or behind vehicles.
8. The rider's foot makes the circle more FORWARD and LOWER than the old way. See Illustration.
9. The Jointed Crank enables the rider to ride a two inch lower frame, or a two inch lower saddle adjustment.
10. In case of accident, cracking of balls, breaking of cone, or cone axle, the rider is ALWAYS SURE TO GET HOME, if far away on the road, by placing pedals back the old way.
11. If the rider strikes a stone, it does not throw him off the wheel, it only throws off his foot.
12. The Jointed Crank has MANY OTHER POINTS which will be readily appreciated when used.

.....DIRECTIONS

Unscrew the pedals from the cranks and screw the "Jointed Crank" between pedals and cranks; tighten the little crank by using the crank wrench sideways. Use vaseline for lubricating.

The "Jointed Cranks" can be attached to any Bicycle.

They are ornamental to the wheel and weigh only 8 ounces per pair.

The "Jointed Cranks" are made of the best carbon steel, 1 1/4 in. long, drop forged, strong, durable, dust-proof, well nickelplated and fully guaranteed.

