

Rayon Lingerie

Fall Season 1927

HYLOOM PETERSHAM

and

ZEPHYR

Manufactured by

The J. Henry Peters Mfg. Co.
Limited

52 WELLINGTON ST. WEST
TORONTO 2 - CANADA

Rayon Lingerie

made by

the original Rayon house in Canada
(established 1902)

Two Superb Qualities

HYLOOM
PETERSHAM

an especially durable compactly knit run-proof fabric; the very finest quality Rayon lingerie that can be made.

AND

ZEPHYR

a popular priced medium weight line of garments made with the same high standard of workmanship.

Lovely Colors
Exquisite Texture
Smart Cut
Careful Finish
Perfect Fit
Long Wear
Right Price
Quick Deliveries
Satisfaction guaranteed.	

*Your esteemed order will give us
the opportunity to prove the
above statements*

The J. Henry Peters Mfg. Co.
Limited

Tailored Pyjamas



The smartest and most carefully finished rayon pyjamas on the market. An excellent example of perfect workmanship. Made in the following attractive colors and trims.

- Black trimmed with Crabapple
- *Orchid trimmed with Peach
- *Blush Pink trimmed with Powder Blue
- *Peach trimmed with Orchid
- *Powder Blue trimmed with Blush Pink
- Crabapple trimmed with Black.

**These colors also made with black trim.*

TAILORED PYJAMAS NO. 813 IN ZEPHYR.

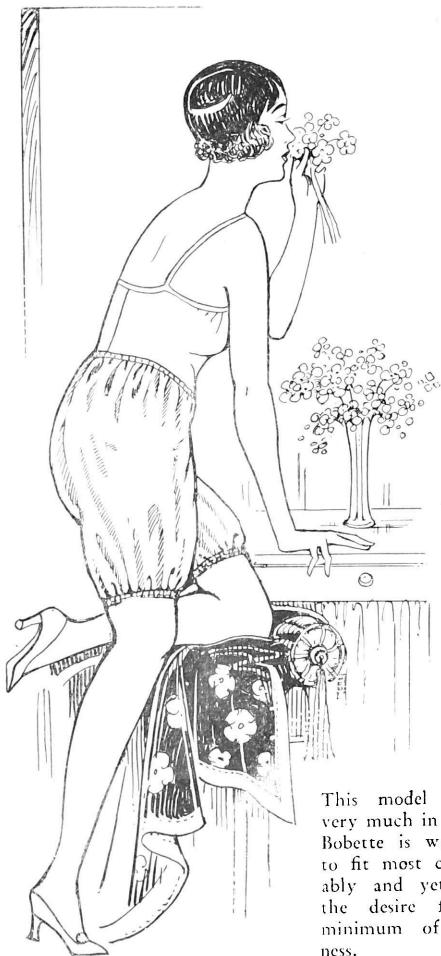
The Sports Knicker



Our new creation—at last a most comfortable and yet form fitting bloomer. Especially sturdy in construction with extra reinforcing in gusset and crotch. Ideal for the active and athletically inclined girl; gives perfect freedom of movement and has slenderizing effect.

Colors: Complete Hyloom Petersham Range.
SPORTS KNICKER No. 953—In Hyloom Petersham.

Bobette Bloomer



This model of the very much in demand Bobette is warranted to fit most comfortably and yet fulfils the desire for the minimum of bulkiness.

"V" Top Slip



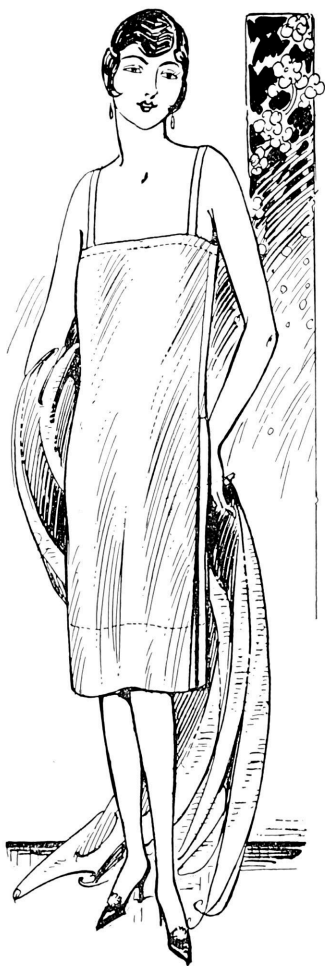
The comfortably snug fit around the shoulder prevents sagging of the hem line of this smart slip. Carefully bound edges of armholes and neckline; inverted pleats at hips; 6 inch basted hem.

Colors Complete Hyloom Petersham Range.

"V" TOP SLIP No. 987 IN HYLOOM PETERSHAM.

Opera Top Slip

Carefully cut in properly generous length with 6 inch basted hem. Not a detail of fabric quality, cut, or finish is skimped on this recognized "standard of value" garment. The feature of this model is the patented elastic insert in the hem under the arms eliminating the bothersome drawstring.



Colors: Complete Hyloom Petersham Range.

OPERA TOP SLIP No. 996—In Hyloom Petersham.

Opera Top Vest

Always uniformly
and correctly
sized, beautifully
tailored.

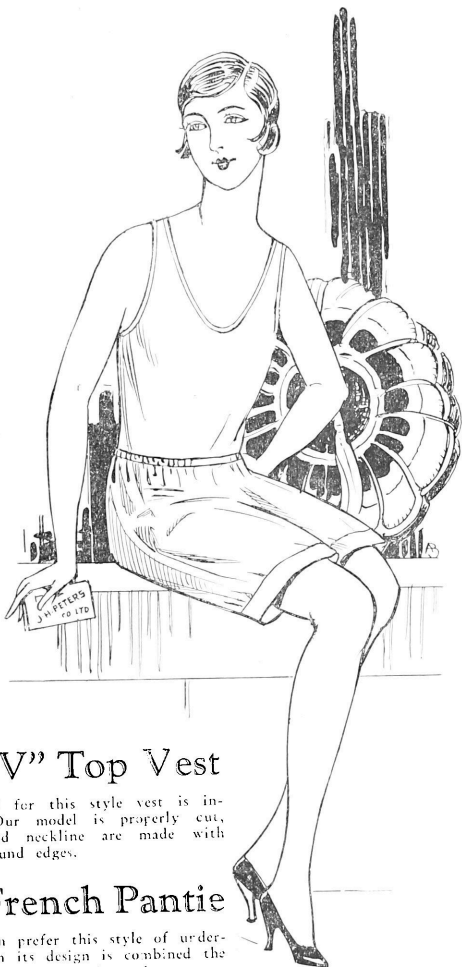
Regular Bloomers

Cleverly cut to
provide ample
room without
"bunchiness."
Trim and smooth
fitting over the
hips. The "Ever-
wear" elastic used
in these garments
is guaranteed never
to need renewing.



Colors: Complete Range in Zephyr and Hyloom Petersham.

Vests.....	(No. 828—In Zephyr
	(No. 956—In Hyloom Petersham.
Bloomers.....	(No. 826—In Zephyr
	(No. 958—In Hyloom Petersham



The "V" Top Vest

The demand for this style vest is increasing. Our model is properly cut, armholes and neckline are made with carefully bound edges.

The French Pantie

Many women prefer this style of undergarment. In its design is combined the utmost of smartness and comfort.

Colors: Complete Hyloom Petersham Range.

"V" TOP VEST No. 967—In Hyloom Petersham.

FRENCH PANTIE No. 998—In Hyloom Petersham.

Round Neck Nightgown



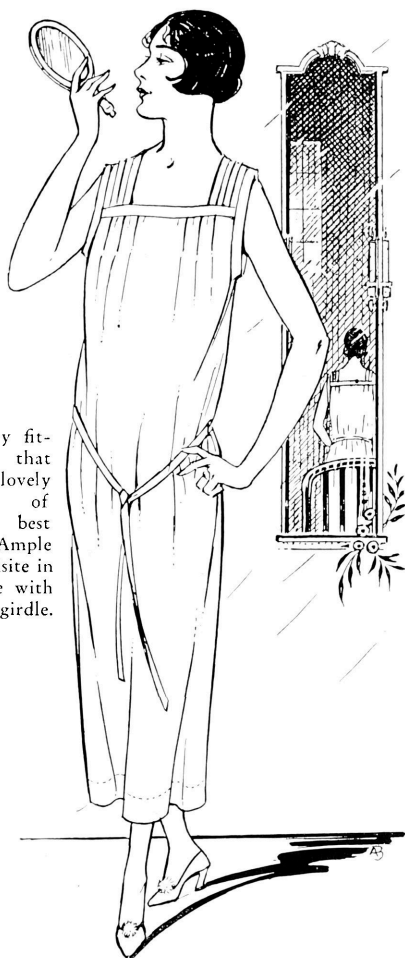
A delightfully attractive and youthful model. Its charming simplicity of cut with delicately contrasting color of yoke will appeal to discriminating women.

Colors: White, Melon, Blush Pink, Powder Blue, Nile, Crabapple, Peach Orchid.

NIGHTGOWN No. 868 IN ZEPHYR.

Square Neck Nightgown

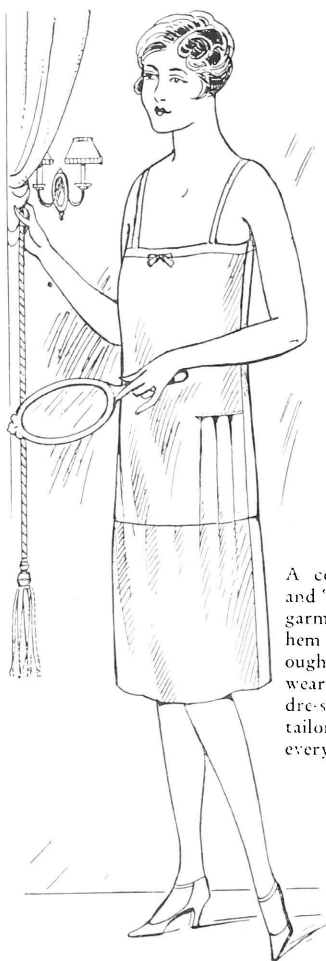
A beautifully fitting gown that shows the lovely shimmering of Zephyr to best advantage. Ample in cut, exquisite in finish; made with or without girdle.



Colors: White, Melon, Nile, Blush Pink, Powder, Peach, Orchid, Crabapple.

SQUARE NECK GOWN No. 827 IN ZEPHYR.

Opera Top Shadowproof Slip



A consistently popular and "standard of value" garment. The 16 inch hem makes it thoroughly shadowproof to wear with sheerest dresses. Most carefully tailored and finished in every detail.

Colors: Complete Zephyr Range.
OPERA TOP SHADOWPROOF SLIP No. 824
IN ZEPHYR

"V" Top Shadowproof Slip



A popular garment for Fall. Inverted pleats at side ensure straight hang. The 16 inch shadowproof hem is basted, permitting length adjustment to suit individual taste. Dainty trimming at neckline and armholes.

Colors: Complete Zephyr Range.

"V" TOP SHADOWPROOF SLIP No. 829 IN ZEPHYR

Combination "All-in-One"



A garment that is vest, bloomer, slip "all in one." It has become very popular for either street or sports wear. An original and distinctive garment for the fastidious.

Colors: White, Nile, Blush Pink, Cinnamon Pink, Crabapple, Melon, Peach, Orchid, Powder.

ALL-IN-ONE No. 880 IN ZEPHYR

To Wash Rayon

The Right Way
Is the Easy Way
USE LUX

Follow these simple rules and you'll actually add months of wear to your rayon.

Dissolve a tablespoon or more of LUX in a basin of hot water. When thoroughly dissolved whip it into a lather, then add cool water till a lukewarm temperature is reached.

DON'T USE IT HOT.

Dip garment in and out of the lather repeatedly squeezing suds through all parts of it.

DON'T RUB.

Rinse in lukewarm water, as many rinsings as necessary to remove all suds, then squeeze the water out.

DON'T WRING.

To dry, hang over a rod or roll up in a thick towel.

While damp press with a warm iron. This restores the lustre.

DON'T USE A HOT IRON.

Complete Range Colors *for* *Fall 1927*

Hyloom Petersham Garments

BLACK	NILE
WHITE	SAND
SILVER	NAVY
MADURA	PEACH
CRABAPPLE	MELON
BLUSH PINK	ORCHID
WOOD ROSE	POWDER BLUE
ALMOND GREEN	CINNAMON PINK

Regular sizes are 34 to 44 inclusive.
Outsizes made to order.

Zephyr Garments

BLACK	NILE
WHITE	PEACH
NAVY	MELON
SAND	ORCHID
SILVER	MADURA
CRABAPPLE	POWDER BLUE
BLUSH PINK	CINNAMON PINK

Regular sizes are Small, Medium and Large
Outsizes made to order.

The J. Henry Peters Mfg. Co.
Limited

52 WELLINGTON ST. WEST
TORONTO 2 - CANADA

