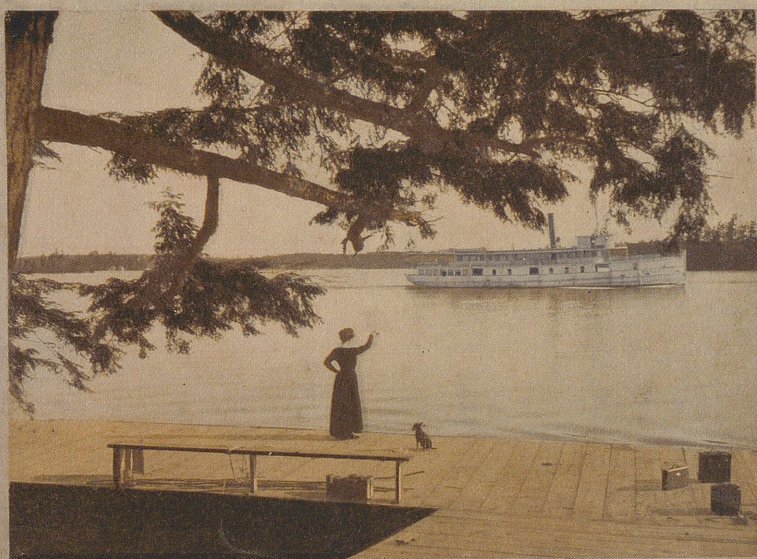
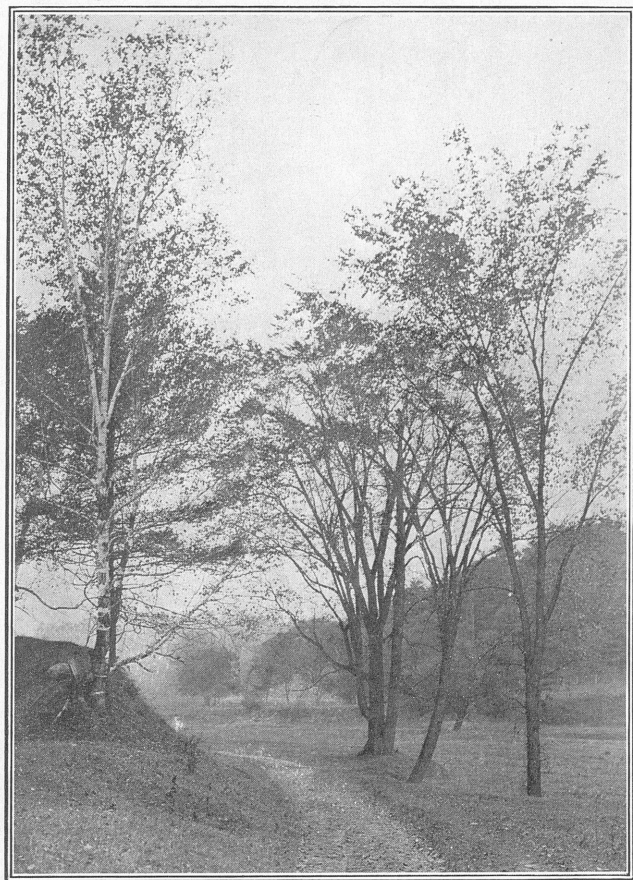




# THE LAKE SHORE LINE OF THE MUSKOKAS



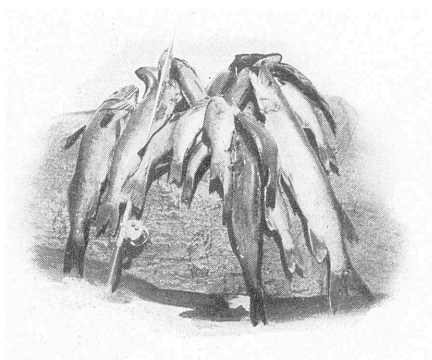


Entering the Don Valley—Canadian Northern Ontario Ry.



# THE LAKE SHORE LINE OF THE MUSKOKAS

---



Short Line Between Toronto  
Muskoka Lakes and Parry Sound

ALONG THE SHORES OF

LAKE SIMCOE  
LAKE COUCHICHING  
SEVERN RIVER  
SPARROW LAKE  
SPENCER LAKE  
LAKE MUSKOKA

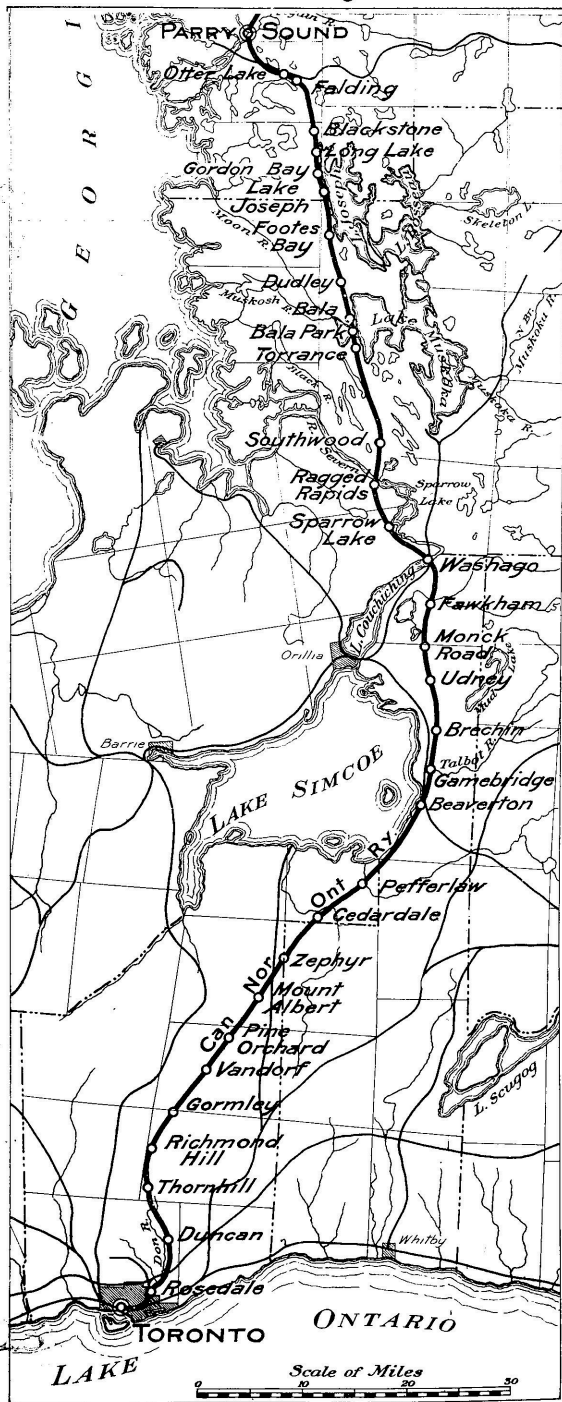
BALA BAY  
FAIRY LAKE  
CASSIDY LAKE  
STEWART LAKE  
BEAR LAKE  
LAKE JOSEPH

LAKE CHURCHILL  
PORTAGE LAKE  
LONG LAKE  
RANKIN LAKE  
OTTER LAKE  
RICHMOND LAKE

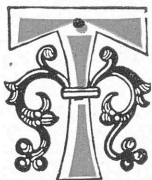
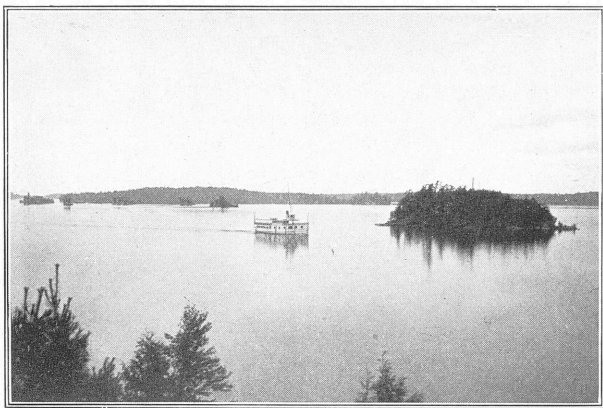
---

# CANADIAN NORTHERN ONTARIO RAILWAY

## Toronto to Parry Sound







O THOSE who know Muskoka, and their name is legion, the Indian word represents something that stands alone in its peculiar individuality and beauty—a realm of translucent waters, studded with sylvan gems of incomparable loveliness.

It is beyond the range of imaginative genius to portray its fascinations, its variety of coloring and seemingly endless charms. "The land of enchantment to which all must return who have once sought entrance," where tree and brush ring with the melody of the song bird and all nature is a "hymn of praise."

In its invigorating atmosphere the tired business man coming from the murky city may drink of "The Fountain of Youth" and return rejuvenated to take up his task with forceful energy.

Muskoka Lakes are situated immediately along the line of the Canadian Northern Ontario Ry. which runs direct to the centre of the Lake District.

The altitude is nearly a thousand feet above the sea level; where the air is rarified and salubrious, redolent of the odour of the pine, balsam and fir tree, with which the shores and islands are thickly wooded.

The running of the Canadian Northern Ontario Railway along the shores of the lakes enables people to get there with much greater facility than they have hitherto and will result in many going there who have been deterred in the past by the length of time occupied by the journey and other disabilities, particularly to what were remote points on Lakes Joseph and Rosseau, but which will now be the easiest to reach by the "Lake Shore Line of the Muskokas."

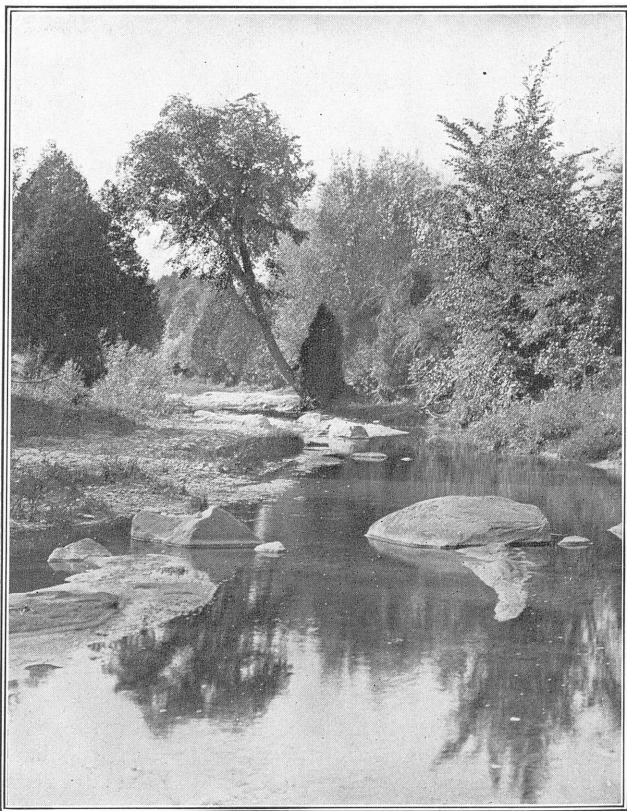
To those who are looking forward to that blithesome time of year, "the summer holidays," the seeker after health,



## Canadian Northern Ontario Railway

the angler, and the tourist, these pages are particularly addressed to show the increased facilities for reaching the resorts of the Muskoka districts and the extensive tract of pleasure grounds found in its vicinity, its unrivalled attraction for fishing, camping and canoeing.

The Canadian Northern Ontario Railway runs East out of the Union Station and passes into the Don Valley. Compara-



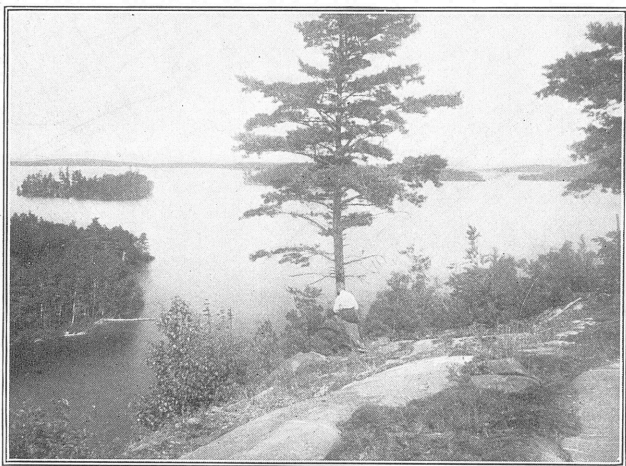
Don Valley from the C.N.O. Ry.

tively few people know what a beautiful Valley this is, confusing it with the murky mouth of the stream. The Valley itself and the upper reaches of the river compose a series of the most beautiful scenes to be found in this part of Ontario; the stream winds in and out between beautifully wooded hills, amid luxuriant foliage and green fields, the picturesque pastoral scenes broken here and there by ravines and glens, which lead away in all directions.



## The Lake Shore Line of the Muskokas

Leaving the Don Valley we enter a rich farming country interspersed here and there with woodland; the well tilled farms, spacious barns, and sleek herds of cattle grazing, tell of the prosperity of the country. We pass Thornhill, Richmond Hill and Mt. Albert and reach Lake Simcoe, a little over fifty miles from Toronto.

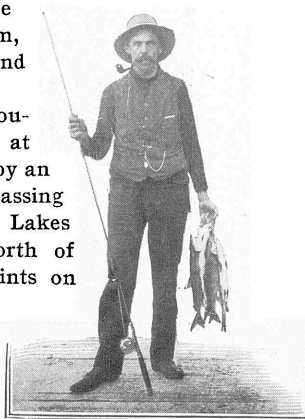


It may not be generally known that Lake Simcoe is considered by many to have one of the finest shore lines in the world, varying from rockbound coast to sloping sands and glittering shingle.

There is no gainsaying the fact (perhaps in the past overlooked) that Beaverton is the most favored spot on the Lake, an ideal place for a summer holiday. Why? Some may ask. Because it has the finest bathing sands within reach of Toronto, sands not surpassed at any seaside resort, sands such as people on the other side of the line travel hundreds of miles to reach. Children can enjoy themselves here all day without any fear, giving the most timid and inexperienced a chance to bathe; just the place to learn to swim, for you can walk out a thousand feet and not go over your head.

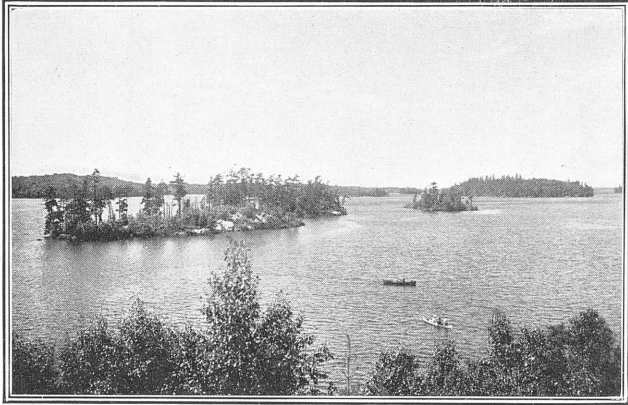
The line crosses the head of Lake Couchiching and strikes the Muskoka District at Sparrow Lake, that beautiful part formed by an enlargement of the Severn River and after passing over Ragged Rapids reaches the Muskoka Lakes at Torrance, Lake Muskoka, 111 miles north of Toronto, where connection is made for points on Bala Bay.

Running along the shores of Bala Bay, the line crosses into Bala Park, where a



## Canadian Northern Ontario Railway

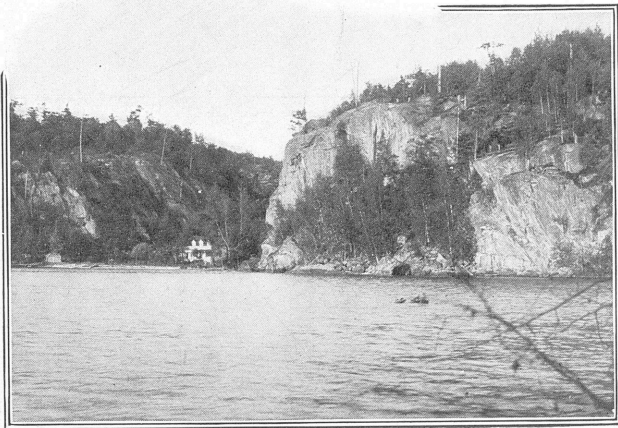
new wharf and station have been built to accommodate the travel to points on Lake Muskoka. A special service has been arranged with the Muskoka Navigation Company to run



From Hamil's

exclusively in connection with this line to serve all parts of the lake, this service will be a great convenience to the dwellers of Whitesides, Camp Sutton, Mortimer's Point, Milford Bay, Beaumaris and other nearby points.

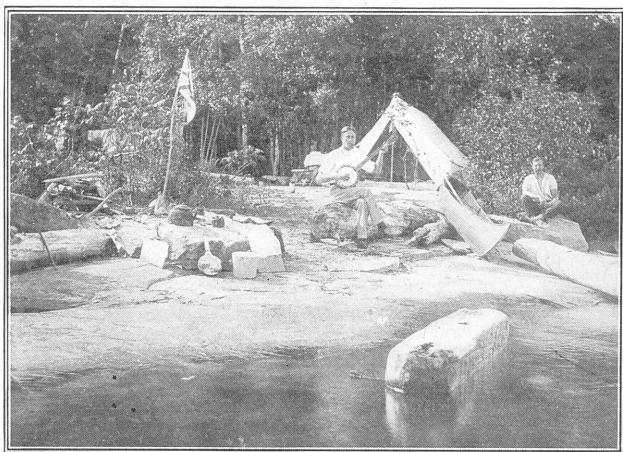
Leaving the station the line runs along the west shore of the Park overlooking Bala Bay, which is strikingly beautiful from this coign of vantage; it begins to dawn upon one that this is a new way; Muskoka seen from an entirely different view point, with a great deal gained as to the time of arrival.



Skeleton Bay, Muskoka



## The Lake Shore Line of the Muskokas



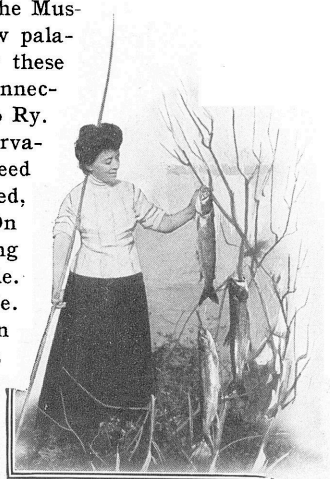
Free and Easy

Now we are going up the shores of Lake Muskoka past the Bala road which leads to Port Carling, then through Dudley, along Cassidy Lake to Footes Bay, from the Bay is but a short distance to the populous lower port of Lake Joseph.

Now past a few more small and very pretty lakes, including Bear Lake, an arm of Lake Joseph. On we speed through the forest glades flashing emerald with the shafts of sunlight or now black, green, cavernous, mysterious, where the pines grow close, perchance reaching up to a pale blue cliff in a cloud ridden sky, ere we reach transportation realities in the form of Lake Joseph station, the great distributing point. But pause and view the grand panorama of the Lake ten miles to the south seen from the station chalet. To the north five miles away is Port Cockburn, the head of Lake Joseph, where is situated the Summit House, one of the best hotels in Muskoka, and certainly one of the most picturesque bits of scenery in the whole district.

You now embark on the Queen of the Muskoka Navigation Company's fleet, the new palatial steamer "Sagamo" which will ply these waters for the first time this summer in connection with the Canadian Northern Ontario Ry.

This steamer is of the Day boat observation type of 152 feet in length with a speed of 16 miles an hour; she is beautifully fitted, and lighted throughout by electricity. On the main deck is a large and airy dining room which will accommodate 90 people. The Sagamo has a capacity of 800 people. On the arrival of the Canadian Northern Ontario "Lake Shore Flyer" she leaves Lake Joseph Station Wharf and calls at all the principal points on the Lake,



## Canadian Northern Ontario Railway

making connection at Royal Muskoka with a special steamer for Rosseau points. Gordon Bay is the last stop on Lake Joseph, the line here is quite close to the lake and it is a very convenient point for the Gordon House, Dixon's, and for the numerous cottagers living in the vicinity.

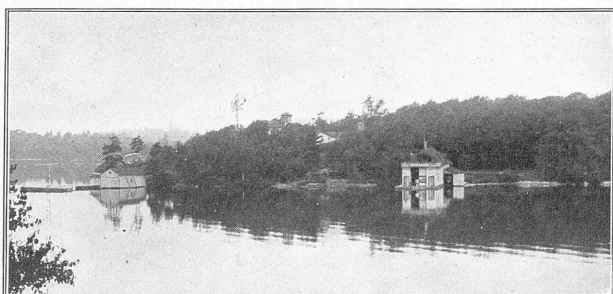


We now enter another Lake District and one of the most striking pieces of scenery that can be seen from a railway train, as shore after shore is skirted "Portage," "Long Lake," "Rankin," "Otter," "Richmond Lake," "Lake Churchill." Here those who desire to seek seclusion can desert the railway and be lost in this charming terra incognita where, "far from the madding crowd," mundane matters seem of another sphere. You are in a great fishing country, and a land of ideal canoe trips.

### Parry Sound, the Georgian Bay and the Hundred Thousand Islands

**N**INETEEN miles only from Lake Joseph Station, and one of the most interesting trips for Muskoka Lakes' people, is Parry Sound, the metropolis of the Georgian Bay.

It is now a point convenient of access, being only 149 miles from Toronto by Canadian Northern Ontario Railway, the only railway entering the town of Parry Sound. This part of the

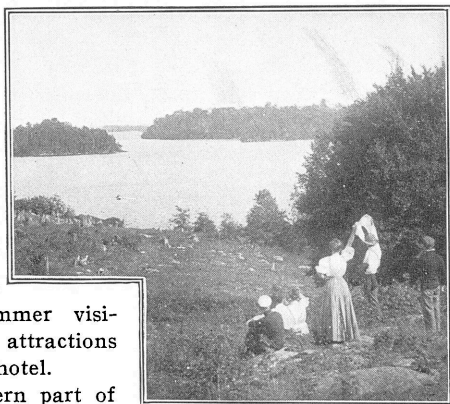




## The Lake Shore Line of the Muskokas

Georgian Bay is one of the most beautiful parts of this extraordinarily beautiful country, which when better known will attract hundreds of thousands of people where dozens now go and where millions can be lost in its **Hundred Thousand Islands.**

On the bluff, elevated far above the waters, stands the "Belvidere," a fit crown for so attractive an eminence, constructed especially for the entertainment of summer visitors, it has all the attractions of the ideal summer hotel.

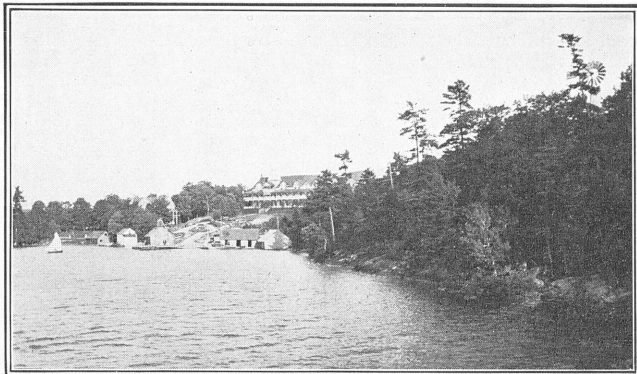


From the western part of the bluff the prospect is grand, an unbroken sheet of water two miles wide between the islands can be seen stretching away for about eight miles. Big stories of fishing can be told of these waters, but more anon.

At Parry Harbor is the well-known Hotel Kipling, a splendid modern hotel, whose genial host can give accommodation to 150 people. Boats, canoes, gasoline launches and guides can be obtained here.

Situated on the inside channel about two miles from Parry Sound is the Rose Point Summer Resort (reached by the Parry Sound yachting fleet), a high class hotel with many attractions. It is beautifully situated and splendidly equipped, and there are few places where one can enjoy such delightful scenery, excellent boating, fine fishing, as from this hotel.

The Canadian Northern Ontario Ry. makes connection with a number of steamers at Parry Sound for all parts of the Georgian Bay and Lake Huron.

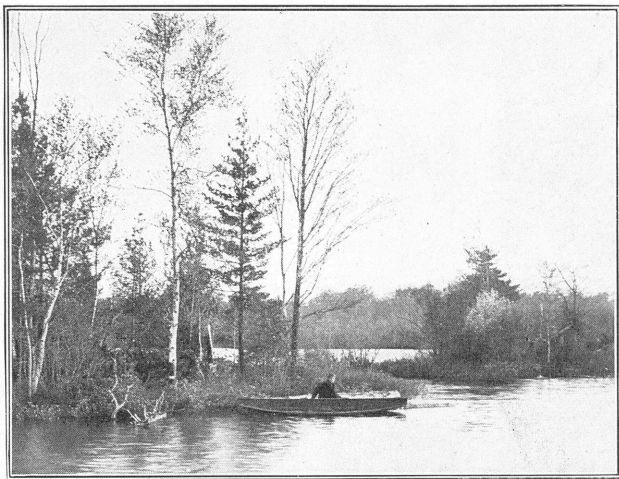


Windermere

## Canadian Northern Ontario Railway

Amongst the interesting trips that can be made from Parry Sound, and there are many, is that to Point aux Baril, considered by some the beauty spot of this wonderland. Special steamers make this trip with frequency from Parry Sound. Through the inner channel to Killarney with a call at Pt. aux Baril near the mouth of the Shawanaga, Byng Inlet at the mouth of the Maganet-awan, French River, Killarney and the Sault, is an experience that will never be forgotten: the steamer winds in and out among innumerable islands of whose beauties but a faint description could be given.

Lake Huron is described by an eminent writer as a practically inexhaustible reservoir of sweet water of crystal purity without a rival on earth but the mightier "Superior" in its own neighborhood. Including the Georgian Bay it has an area of 22,000



A Likely Spot

square miles, so that European kingdoms, like Holland and Belgium, might be dropped into it and, as the average depth is 360 feet, they would not leave a mark behind. Where all the water comes from is a mystery.

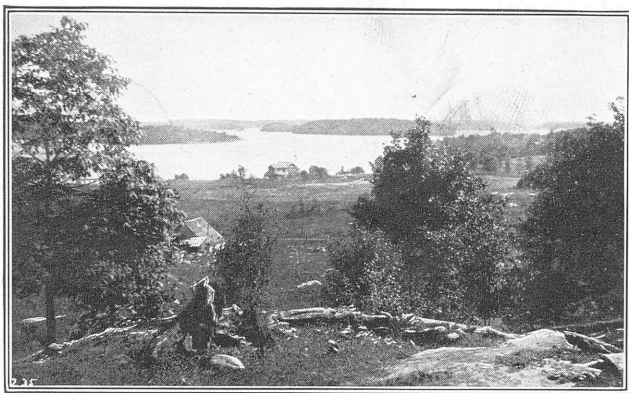
Speaking of a recent journey through a part of the Georgian Bay an eminent divine said, "In all my experience, and I am a life-long traveller, I have never seen anything to equal this marvelous archipelago for beauty. I was fortunate enough to be wakened early in the morning. Going on deck I seemed lifted with the strength of the ozone filled atmosphere; before me was a scene that lingers in my mind daily; the sun was rising and the numberless islands in every direction were reflected in the water and seemed poised between heaven and earth floating as it were in the ether—I knelt and prayed—such a sight should make men thank the Creator."

## The Lake Shore Line of the Muskokas

### Sparrow Lake and Severn River

**T**HIS district is not as well known to tourists as other parts of Muskoka, perhaps because in the past it has not been as convenient to reach, not having the transportation facilities it now enjoys with the Canadian Northern Ontario running right along the Lake Shore. Passengers can now reach these resorts either from Hamlet on the Severn River by Capt. Wood's or Capt. Bennett's boats, or by the "Sparrow Lake Steamer Line" from Sparrow Lake Station, which is almost at the water's edge.

The lake is somewhat circular in shape but with pretty promontories jutting out all round it and some very picturesque islands. The clearness of the water produces the most beautiful shadow pictures. All around the lake when the water is calm, tree and brush are mirrored in the water in vivid reflection; in some shady bays are seen reeds which seem almost to float in the air – so striking is the illusion. Just the place the artist and photographer will revel in.



Cleavelands

For a body of water of its size not much more than about 20 miles in area it has the most wonderful diversity of shore, high rocky crags, low broken shore line and sandy beaches, the contrast between the vivid reds of the granite and the green of the pine on the water side making a beautiful colouring.

Nature has been bountiful here, but to add to the pleasure of the district, there are some splendidly kept hotels and boarding houses, a full list of which is shown at the back of this publication. The people keeping these resorts take a pride in being second to none in giving excellent service and accommodation. Unlike most of the Muskoka resorts, the country surrounding to the south and east is a farming district, consequently fresh supplies of all kinds are easily obtained. Many of these summer resorts provide their own milk, eggs, poultry and vegetables.

There are some splendid canoe trips in the vicinity of Sparrow Lake, particularly down the Lower Severn. Those desiring to

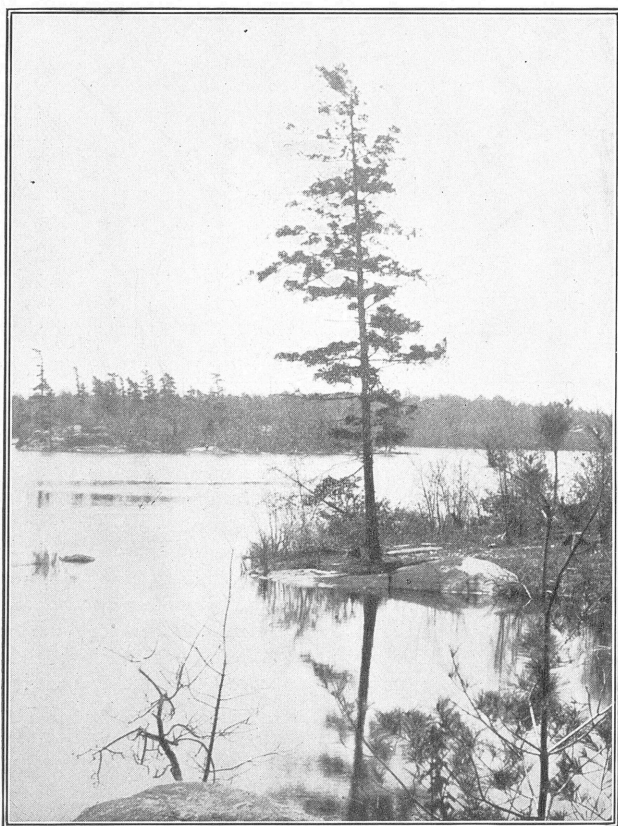


## Canadian Northern Ontario Railway

make this trip can now take the train to Ragged Rapids and start from there down the river. It is a most interesting trip, with short portages and rapids to shoot and splendid places to camp. For the man who leads a sedentary life, there could be no better prescription than a trip of this kind, where he will have nothing worse to worry about than how to satisfy a voracious appetite, he will return bright of eye and with a wealth of memories that will not end with a summer vacation.

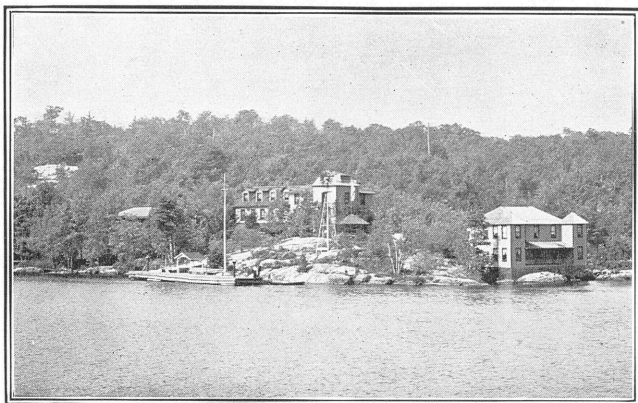
### Fishing

**M**ANY have the impression that it is necessary nowadays to go very far afield to get anything worth being called fishing; this is not always the case, as the excellent bass fishing in Lake Simcoe, not far from Beaverton, proves. The fact that Lake Simcoe is a great fish preserve and hatchery does not strike the average observer. It is one of the natural homes of the small-mouthed black bass, and in its clear pellucid waters there is a certain amount of action and current that keeps the fish active



View from Bala Park—C.N.O. Ry.

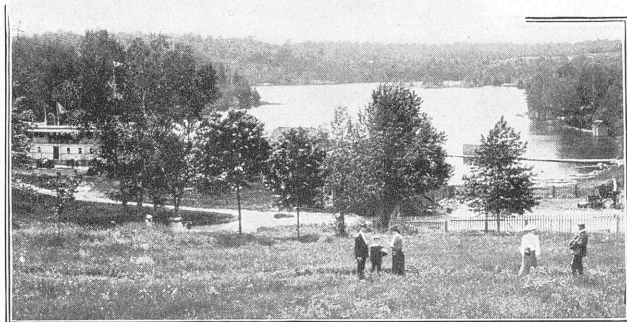
## The Lake Shore Line of the Muskokas



Morinus

and healthy, shown by the fight they put up. Netting is prohibited and the law well enforced, consequently as the number of fish that can be taken with rod and line is limited and can make very little difference, the fish are multiplying in large numbers.

In Lake Simcoe, Couchiching and Severn River are found that prince of fresh water fish, the Maskinonge; a 20-pounder is a common catch, and they are known to run as high as 40 lbs.; to hook one of these big fellows will give the disciple of Isaac Walton the time of his life; the lunge is a fierce fighter and it takes some time for him to exhaust his great strength; beware! don't try to land him too soon or there may be a flurry, some broken tackle, and a disappointed fisherman. Guides and canoes can be got at Hamlet on the Severn River, they charge \$2.50 a day and provide a canoe. On the Lower Severn pike and pickerel abound.

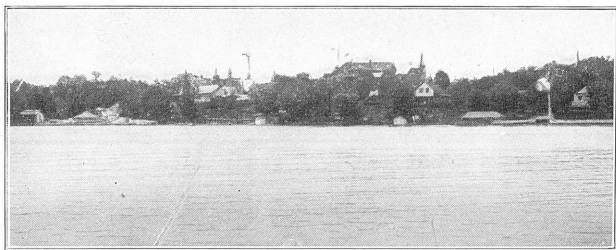


Port Cockburn

## Canadian Northern Ontario Railway

In the vicinity of Muskoka Lakes proper and in some parts of the lakes themselves there is very good fishing to be got.

Two or three miles from Bala down the Moon River is found good Maskinonge fishing. A number of lakes in the vicinity of Torrance provide very good sport, including Black Lake, Nine Mile Lake, Echo Lake, Clear Lake, all within a distance of about three miles. Near Beaumaris, Leonard Lake and Brandy Lake both contain fine black bass which run as high as 3 pounds. Amongst the fishing grounds of note in the Muskoka Lakes are Sucker Lake and Watson Lake where good bass and salmon trout fishing is reported. These lakes are near Rosseau. Morgan's Bay and Bass Lake are also good fishing grounds. In Lake Joseph itself good salmon trout fishing can be got by deep trolling between Hamil's Point and Pt. Sandfield. Guides can be obtained who will ensure good fishing.



Port Carling

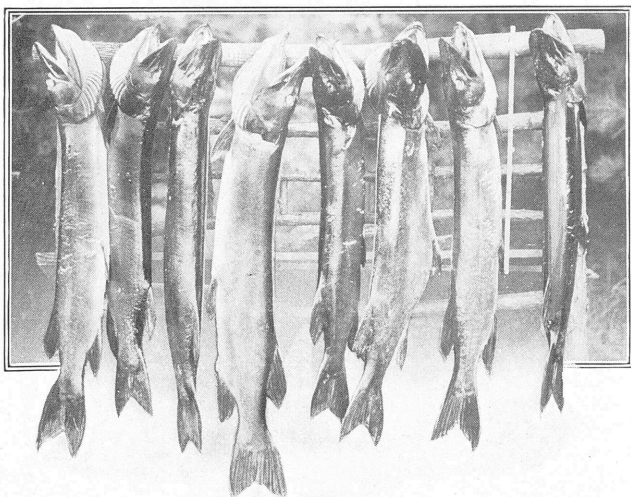
For the enthusiastic angler, who is desirous of leaving the beaten path of the well-known districts for the unbroken forest and the blazed trail, there is that ideal district reached from Blackstone Lake on the Canadian Northern Ontario. Blackstone itself has a large number of pickerel in its waters, which run as high as ten and twelve pounds in weight; let the angler follow this chain of lakes and get into Crane Lake, the home of the Maskinonge. Years ago this lake was full of black bass and the few who fished it wondered what could be depleting the waters, and it proved to be the maskinonge. Last year fish were taken out of this lake weighing over forty pounds. In Pine Lake, not quite so well known, there is good green bass fishing.

Other lakes in this chain are Healey and Kah-pe-Kog, in which lakes there is some of the best small mouth black bass fishing in Ontario. There are a number more of small lakes in this vicinity where bass in numbers are to be found and in the small streams which flow toward the Georgian Bay, the trout make good fly fishing.

About as good fishing as a man can desire is to be got in the small lakes, on the Canadian Northern Ontario, between Lake Joseph station and Parry Sound, particularly Otter and Blackstone, where you are practically sure of good sport. The trip to these lakes makes a fine day's outing for people staying at Parry Sound or on the Muskoka Lakes.



## The Lake Shore Line of the Muskokas

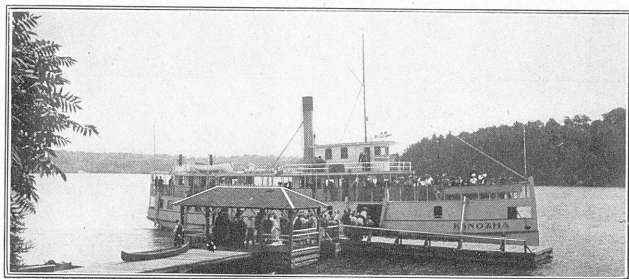


A Record Catch—200 Pounds Maskinonge (Crane Lake)

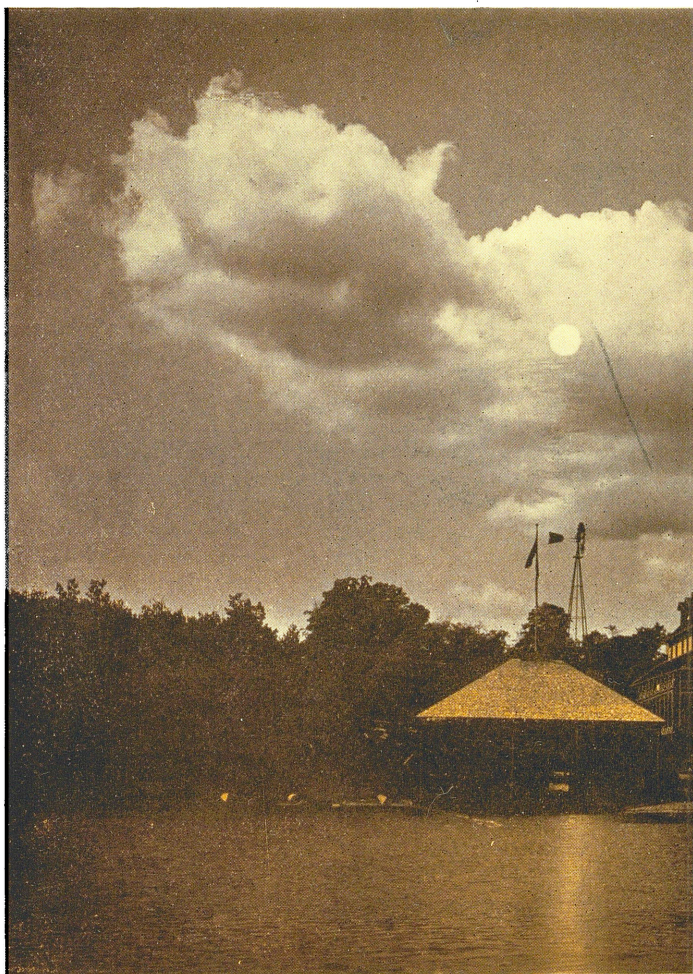
North of Parry Sound beginning at Mill Lake there is good bass fishing and from that point north you enter a lake region that has practically never been fished; during the coming year the Canadian Northern Ontario Railway will be completed through this country and will afford the angler easy access to the best fishing grounds in the Province, passing innumerable lakes and crossing the Shawanaga River, the Maganetawan and French Rivers through an almost unknown country—an elysium for the camper and sportsman.

Any description of Muskoka and its fishing would be incomplete without reference to Mr. David Smith's preserve at Hardy's Lake, about two miles from Torrance over a good road, and a little more from Bala Park Station across the Lake into East Bay to Port Smith.

It would be hard to describe the beautiful surroundings of this small Lake without being accused of extravagance of language; it has a shore line of over five miles, in shape almost a



## Canadian Northern Ontario Railway

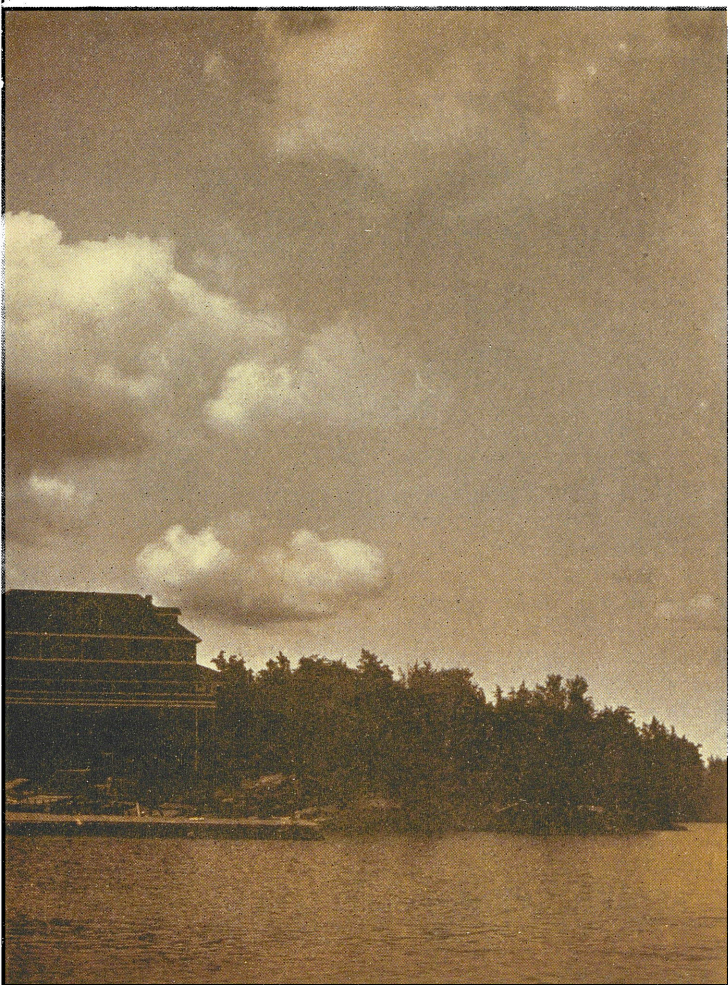


EVENIN

'Tis even, as the shadows fall, the spirit of contemplation is stimulated by the twinkling of a camp fire, a snatch of song from a nearby cottage; the undisturbed dip of the paddle as it breaks the placid bosom of the lake, which like a mirror its path boats pass, and voices softly calling tell of the close of another day.



## The Lake Shore Line of the Muskokas

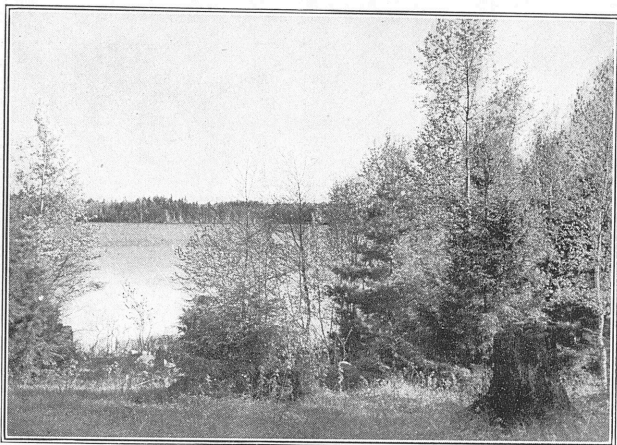


### SHADOWS

he placid scene, and the touch of the night wind's velvet, soft caress; across, the hum from holm and islet which distance mingles and softens into music; the lazy reflects a myriad stars bedecking the celestial vault. The moon rises and across

## Canadian Northern Ontario Railway

replica of Lake Muskoka on a small scale, indented by small bays where trout and large black bass lurk in large numbers, and where the deer come down the runways to drink.



Smith's Preserve

Mr. David Smith is one of Ontario's greatest authorities on fish culture. The lake is a very practical illustration of what can be done in preserving, feeding and stocking the right kind of waters. It would be well if more followed his example.

The Lake is fed by springs and flows over a miniature falls down a small stream into Lake Muskoka. The waters are cold and of great purity with sufficient movement to keep the fish active and in splendid condition. Very large fish are taken from these waters and it is quite a common thing to get a four pound bass.

The Georgian Bay is known to all as the natural home of the



Waiting for a Shot

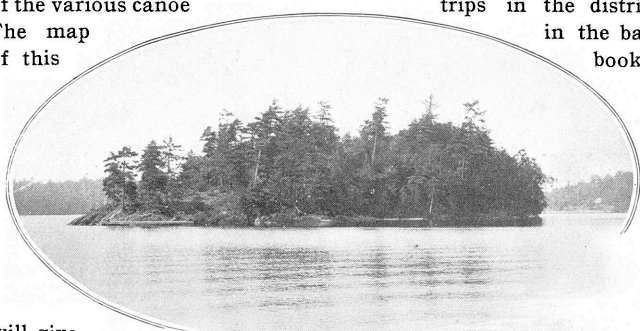
## The Lake Shore Line of the Muskokas

black bass, the water and the bottom being exactly suited to this game fish, and as good fishing as the most ardent angler could desire is to be found within easy reach of Parry Sound.

Further north at Point aux Baril, white fish, salmon trout and black bass are numerous; in fact, all along the shores of the Georgian Bay excellent fishing grounds exist.

### A Few Hints About Camping

**D**ON'T be in too much of a hurry about making your arrangements; call upon our ticket agents, or write our General Passenger Department, who will gladly furnish information about the Muskoka region, and direct you how to get charts of the various canoe trips in the district. The map in the back of this booklet



will give  
a correct  
idea of the  
country.

**GUIDES AND CANOES.** Splendid guides can be got in the Muskoka District; they charge from \$2 to \$3 a day including canoes. The best canoes to take are Birch bark or Peterboro.

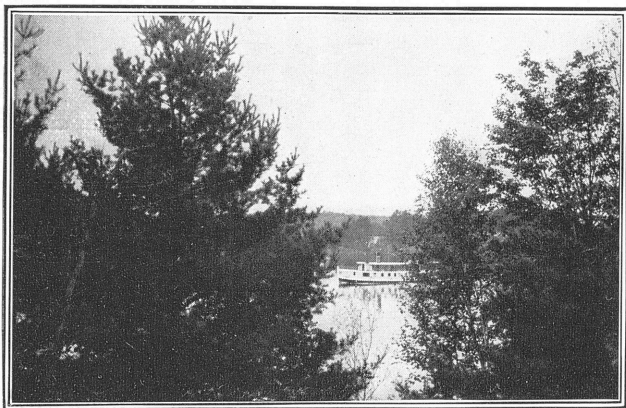
**OUTFITS.** There are the best of outfitters in Toronto and Parry Sound, at which points visitors will find they can get pretty well everything they need.

For a canoe trip of any length it is well to provide a good camp outfit. A wall tent of suitable size made of waterproof silk will well repay the extra cost on account of its saving in weight on the portage, a rubber blanket 6 x 7 feet is very useful, by cutting a split in the centre and reinforcing the edges it will serve as a poncho in wet weather. taking the place of a waterproof coat. A flour sack is useful to fill with "sapin" to serve as a pillow and a seat.

Nowadays, very complete camp outfits are sold, but for the experienced camper or prospector most of the patent aluminum nesting outfits, and so forth, provide a number of things cumbersome to pack and generally superfluous. In practice a very useful combination is an eight quart tin with a wire handle and a cover and two tins of a similar kind to nest into it. In these you can put your knives, spoons, forks and tin or enamel cups, and with enamel plates and two frying pans, you have about the full

# Canadian Northern Ontario Railway

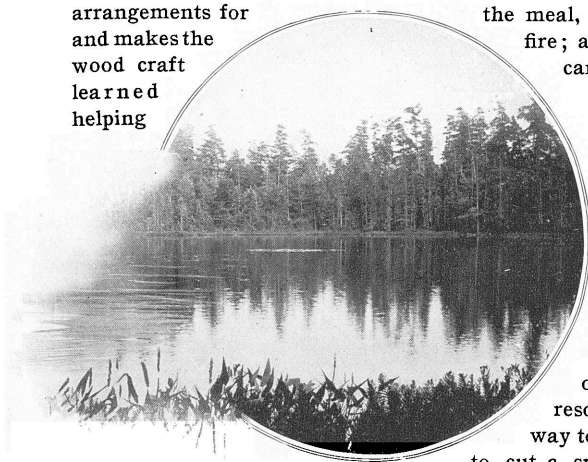
complement for meals, your sugar, tea, coffee, etc., being carried in canisters, butter in the original tin packages and salt and pepper in large castors. Amongst your supplies, which will be dictated



A Glimpse from Foote's Bay—C.N.O. Ry.

by individual tastes, include a tin or so of desiccated potatoes; they are easy to carry, being very light, and go far in making up a commissariat.

**CAMP.** When selecting your camp, whenever possible get near good water, this makes it convenient for your cooking, washing dishes, etc. Select your ground on a knoll where in case of rain the water will run away from the tent. When the camp is chosen one guide immediately sets to work to cut stakes to erect the tent and cuts the sapin; while the other guide makes arrangements for the meal, cuts the wood and makes the fire; a good lesson in wood craft can generally be learned by the novice helping in these operations, and with some little practice he will become quite skilled in making camp. If you are thrown on your own resources, a good way to get a meal is to cut a spruceling pole

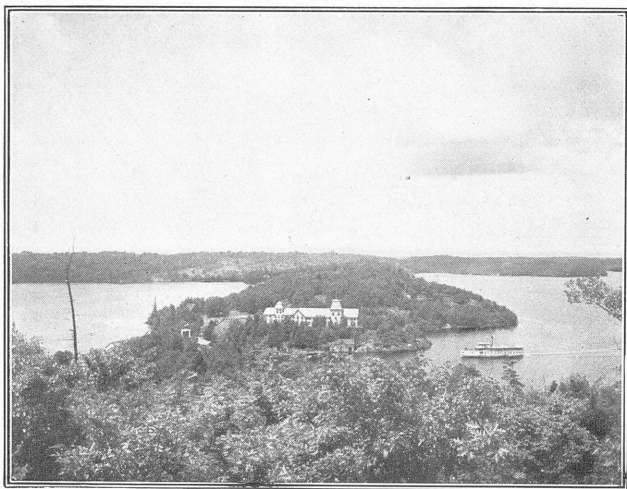


A Lake on an Island, 30 feet above level  
of Lake Joseph

## The Lake Shore Line of the Muskokas

about six or seven feet long, drive it into the ground or weight the end with stones, support with a forked stick, then hang on your water tins, the weight brings them down to the required height above the fire. With the three tins you will find that you have all that is required to conduct the culinary art, make tea or coffee, soup or pork and beans and have hot water for washing up.

When camping on dry ground, the tent bed is made of cedar twigs, care being taken in the shingling to cover the stems and make the bed without lumps; if, however, you are on damp ground a good camp bed to carry is made as follows:—Take a piece of strong canvas 40 to 50 inches wide and seven feet long, on each of the long sides turn a hem ten inches deep, having it sewn double for security, leave the two ends open, through them pass a rope which when drawn together makes a pack blanket, readily



The Centre of the Lakes

carried by a pack strap; when required for a bed through the ends where the rope runs thrust poles sufficiently heavy to carry your weight, make spreaders of notched sticks, roll a log under each end and you have as comfortable a bed as a man could desire.

**DON'T GET LOST IN THE WOODS.** You always have a compass in your watch as long as the sun shines; point the watch at the sun and the south is exactly half-way between the hour hand and the figure XII on the dial. Learn to use the "bush compass," this is an art soon acquired by observation. Three-quarters of the moss on the trees grows on the north side; the heavy boughs of the spruce are always on the south side; the topmost twig of every uninjured hemlock tree tips to the east. You will not need a compass when you have learned to read these signs, but it is a good plan to carry one.





Beaumaris

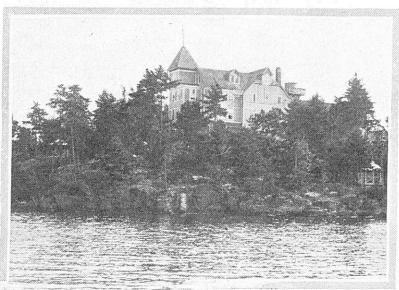
## Abstract of Ontario Fish and Game Laws

### HUNTING—OPEN SEASON

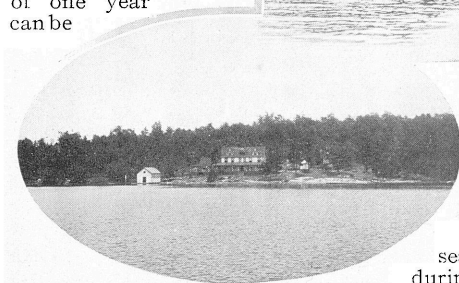
**LICENSE.**—Non-residents may not hunt any bird or animal without a license, and such license must have endorsed on it the signature of the person to whom it is granted. Such license is for one season only, and the fee is \$25. This amount may be increased to \$50 at any time by an Order in Council. Licenses for residents, \$2.00 for deer, \$5.00 for moose or caribou, may be secured on application to Chief Game Warden, Toronto, Ontario.

**Deer.**—November 1st to November 15th, both days inclusive. Only two deer may be taken in one season by one person.

**Moose, Reindeer or Caribou.**—November 1st to November 15th, both days inclusive, in that part of Ontario south of the main line of the Canadian Pacific in the town of Mattawa to the Manitoba boundary. North of this line, 19th day of October to the 20th day of November, both days inclusive. Only one moose, reindeer, or caribou may be taken in one season by one person. No cow moose, or young moose, reindeer or caribou under the age of one year can be



Stanley House



Craigie Lea

killed. No elk or wapiti shall be hunted, taken or killed at any time in Ontario. No person may transport, or have in possession for that purpose during the closed season therefor, any deer, moose,

## The Lake Shore Line of the Muskokas

reindeer, or caribou, or head, raw skin or other part thereof, unless accompanied by a shipping coupon belonging to a license.

**Ducks.**—September 1st to December 31st, both days inclusive.

**Geese and Swans.**—September 15th to April 30th in the following year, both days inclusive.

**Partridge, Grouse, Pheasants, Woodcock.**—September 15th to December 15th, both days inclusive.

**Hares.**—October 1st to December 31st, both days inclusive.

**Capercaillie.**—May not be taken or killed before September 15th, 1909.

**Quail.**—November 1st to December 1st, both days inclusive. May not be bought or sold before the 1st day of November, 1910.

**Rail.**—September 1st to December 15th, both days inclusive.

**Snipe and Plover.**—September 1st to December 15th, both days inclusive. May not be sold before the 15th day of September, 1910.

**Insectivorous Birds.**—May not be caught, killed or sold, or had in possession without a permit, except hawks, crows, blackbirds and English sparrows.

**Squirrels (Black and Gray).**—November 1st to December 1st, both days inclusive.

**Beaver and Otter.**—May not be taken or killed before the first day of November, 1910.

No gun of the description known as automatic in which the recoil is utilized to reload the gun, shall be used in the Province of Ontario in the killing of game.

### FISHING—OPEN SEASON

**Bass.**—June 16th to April 14th following year. Under ten inches must be returned to the water uninjured. Not more than eight may be caught in any one day by any person.

**Salmon Trout.**—December 1st to October 31st following year, both days inclusive.

**Lake Trout and Gray Trout.**—December 1st to October 31st. All lake trout under two pounds must be returned to the water unharmed and only four may be taken in one day by any person.

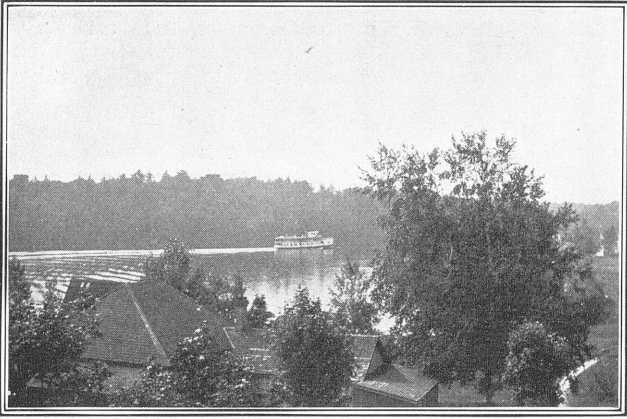
**Maskinonge.**—June 16th to April 14th following year, both days inclusive. Only four may be taken in one day by any person. Under twenty-four inches must be returned to the water uninjured.

**Pickerel.**—May 16th to April 14th following year, both days inclusive. Only twelve may be caught in one day by one person, and all under fifteen inches must be returned to the water uninjured.

**Brook Trout.**—May 1st to September 14th, both days inclusive. This open season also applies to river trout and speckled trout. Thirty only may be caught in one day by any person. Under six inches must be returned to the water. Not more than ten pounds may be taken in one day, though the number may be less than twenty.

**Whitefish.**—December 1st to October 31st following year, both days inclusive. Under two pounds may not be caught.

Non-residents are required to pay a license of \$2.00 for individuals, \$5 for families, for fishing privileges in Ontario waters.



View from the Elgin House

### Baggage

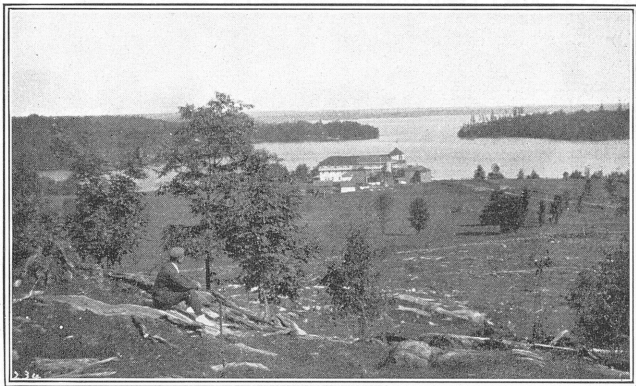
**F**OR tourists, sportsmen and campers, singly or in parties, on camping, hunting or fishing expeditions, two hundred (200) pounds of baggage, including sportsmen's and campers' outfit will be checked free on each adult ticket, and one hundred (100) pounds on each child's ticket. Sportsmen's and campers' outfits may consist of tents, small bundles of bedding, folding cots, camp-chairs, cooking utensils and provisions in small quantities, packed in proper receptacles so that they can be checked, piled and handled as ordinary baggage; also guns, in wooden, leather or canvas cases. This special allowance may also include on return journey 50 pounds of fish caught or game killed (provided same has been taken within the legal season, and is carried according to law), but whole carcasses of deer, bear or other large game more than fifty pounds in weight will not be carried free, or any allowance made thereon—such carcasses must be shipped by express or freight; nor will more than fifty pounds of fish or game be checked on any one ticket, even on payment of excess baggage rates.

Passengers arriving by Niagara Navigation Co. and Richelieu & Ontario Navigation Co. and holding tickets to Toronto only should arrange on arrival with the Canadian Transfer Co., who have a representative on the dock, for transfer of their baggage to the Union Station from which the Canadian Northern Ontario Ry. leaves.

Passengers holding **through tickets** by Niagara Navigation Company or Richelieu & Ontario Navigation Co. and Canadian

## The Lake Shore Line of the Muskokas

Northern Ontario, should see that their baggage is checked through to destination. There is no additional charge for transfer at Toronto on through tickets.

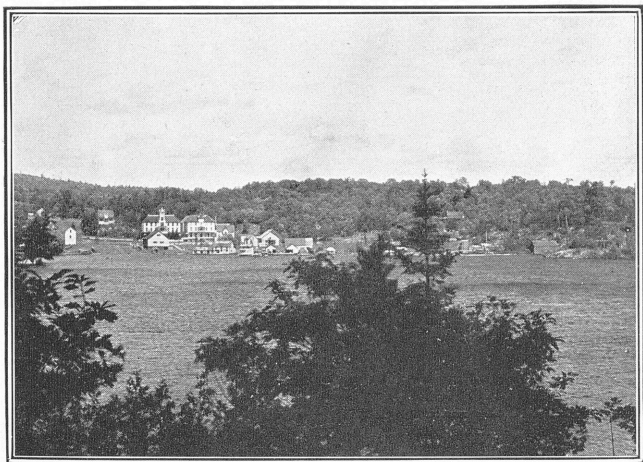


Lake Rosseau

### Dogs

**T**HE charge for the transportation of each dog on the Canadian Northern Ontario Ry. when accompanied by the owner is the same as for 100 lbs of excess baggage. All dogs will be carried at owner's risk and will not be accepted unless provided with a suitable collar and chain.

Dogs crated, must be forwarded by express.



View from Maplehurst

# Canadian Northern Ontario Railway

## Customs Arrangements

**P**ERSONS visiting Canada for a limited time for pleasure may bring with them such guns, fishing tackle, tents, camp equipment, cooking utensils, kodaks, bicycles, etc., as they may require for their own use, upon reporting same to the Customs officer at port of entry, depositing with him a sum of money equal to the duty, subject to a refund of this amount if the articles are exported within four months, or they may be forwarded in bond to any point in Canada where a Customs officer is stationed, where the same regulations as above must be complied with.

Passengers travelling by Niagara Navigation Company to Canada, or Richelieu & Ontario Navigation Co. can have their baggage examined on the boat, an officer being on board for this purpose.

## Stop-over

Stop-over is allowed at all points on the Canadian Northern Ontario Railway on Tourist tickets.



Royal Muskoka



# The Lake Shore Line of the Muskokas

## Hotels

HOTEL	Accommodates.	RATES		Name of Proprietor or Manager
		Per Day	Per Week	
LAKE MUSKOKA				
Bala				
Windsor House.....	175	\$1.50 to \$2.00	\$8.00 and up	W. McDevitt
Bala Falls Hotel.....	135	1.00	7.00 and up	Thos. Curry
Roselawn Lodge.....	25	.....	9.00 to 12.00	Thos. Burgess
Moon Shute House....	30	.....	6.00 and up	Mrs. Renshaw
Huggett's House.....	14	.....	5.00	E. Huggett
Jackson House.....	30	1.00	6.00	Alf. Jackson
Renshaw's House....	20	.....	5.00	Wm. Renshaw
Muskosh Lodge.....	30	1.50	8.00 to 10.00	F. W. Clements
Beaumaris				
Beaumaris Hotel.....	200	2.50 to 3.00	12.00 to 25.00	E. Prowse
Roseneath.....	20	1.25	7.00	Thos. Mears
Torrance				
Brighton Beach.....	50	1.50	6.00 to 10.00	W. O. Whiting
Dudley				
Rockby House.....	20	1.00	3.00 to 7.00	Fred. W. Guy
Boarding House.....	12	.....	5.00 to 6.00	Geo. White
Whiteside				
American House....	50	1.00 to 2.00	7.00 to 10.00	Mrs. M. A. Walker
Hutton House				
Hutton House.....	50	2.00	7.00 to 10.00	J. Hutton
Island F.				
Glen Echo.....	150	1.50 to 2.00	7.00 to 10.00	Mrs. J. A. Walker
Milford Bay				
Milford Bay House..	100	2.00	8.00 to 10.00	R. Stroud
Mortimer's Point				
Wingberry House....	50	1.00	6.00 to 7.00	W. Mortimer
Rosclair.....	40	1.50	6.00 to 8.00	W. T. Noble
Pleasant View.....	30	1.00	6.00 to 8.00	A. H. Bickmore
Camp Sutton				
Camp Sutton.....	25	1.00	5.00 to 6.00	R. Patterson
Acton Island Farm..	30	.....	5.00 to 6.00	J. S. White
LAKE JOSEPH				
Lake Joseph Stn.				
Barnesdale House...	30	1.50	9.00	F. J. Brady
Craigie Lea				
Craigie Lea House. .	40	2.50	12.50 to 15.00	Mrs. J. P. Creich
Elgin House				
Elgin House.....	150	2.00	9.00 to 12.00	L. Love
Gordon Bay				
Gordon House.....	40	2.00 to 2.50	8.00 to 12.00	T. Klegg
Island View.....	30	1.50	6.00 to 8.00	Chas. Dixon
Hamil's Point				
Hamil's Point Hotel.	75	1.50	8.00 to 12.00	Robt. Fawcett
Pinelands				
Belmont.....	50	2.00	8.00 and up	W. Fairhall
Pinelands.....	30	1.00	6.00 and up	J. H. Jones
Port Cockburn				
Summit House.....	200	2.00	10.00 and up	A. D. Fraser
Redwood				
Gleniffer Braes.....	40	1.00	6.00 and up	J. F. Wilson
Bay View House....	35	1.00	6.00 and up	Dixon Bros.
Redwood.....	30	.....	6.00 and up	Jos. Chambers
Shottery.....	25	.....	6.00 and up	Mrs. Potts
Staney Brae				
Staney Brae.....	30	.....	6.00 and up	Mrs. McKenzie

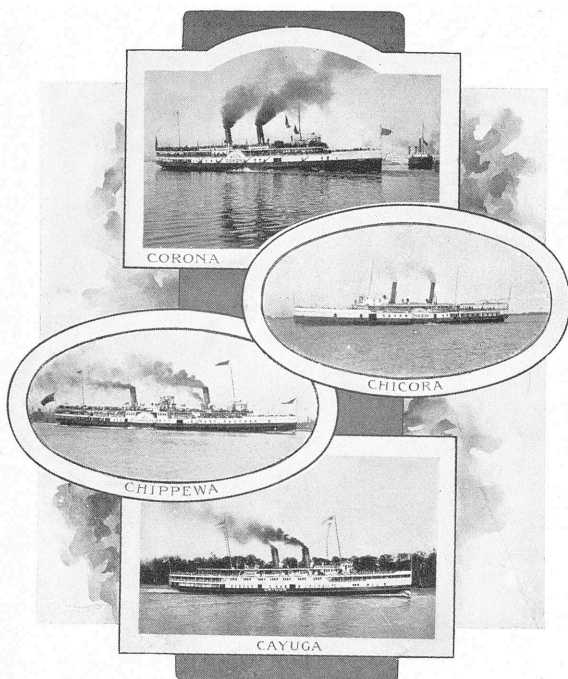
# Canadian Northern Ontario Railway

HOTEL	Accommodates	RATES		Name of Proprietor or Manager
		Per Day	Per Week	
<b>Lake Joseph—Con.</b>				
Stanley House.....	90	\$ 2.00	\$8.00 to \$10.00	W. B. McLean
<b>LAKE ROSSEAU</b>				
<b>Ferndale</b>				
Ferndale House.....	100	2.00	8.00 to 12.00	John Cope
<b>Juddhaven</b>				
Ernescliffe.....	100	1.50 to 2.50	8.00 to 12.00	Alf. Judd
Juddhaven.....	12	.....	6.00 to 8.00	Ralf. Judd
The Bluff.....	50	1.50	7.50 to 12.00	Thomas L. Snow
<b>King's Park</b>				
King's Park House..	75	1.25	6.00 to 8.00	Chas. G. King
<b>Maplehurst</b>				
Maplehurst Hotel...	125	2.00 to 3.00	12.00 to 18.00	Mr. J. P. Brown
<b>Minnett P.O.</b>				
Cleveland House....	100	2.00	8.00 to 12.00	S. A. Minnett
<b>Morinus</b>				
Morinus House.....	150	1.50 to 2.00	7.00 to 9.00	W. D. McNaughton
<b>Paignton's</b>				
Paignton House....	50	1.00 to 1.50	5.00 to 8.00	J. F. Pain
<b>Port Sandfield</b>				
Prospect House....	200	2.00	9.00 to 12.00	Ed. Cox
Boarding House....	12	.....	7.00 to 10.00	Mr. E. Dick
Spottery.....	125	.....	7.00 to 9.00	Mrs. Edwin Potts
<b>Royal Muskoka</b>				
Royal Muskoka.....	3.50	3.00 and up	18.00 and up	L. M. Boomer, Mgr.
<b>Rosseau</b>				
Monteith House....	200	2.00	10.00 to 20.00	Monteith Bros.
The Retreat.....	25	1.00	6.00 and up	Miss J. Halton
The Beach.....	30	1.00	6.00 and up	Mrs. J. B. Laurason
Rossmoyne.....	50	1.50 to 2.00	7.00 to 12.00	J. L. Dawson
Newport House....	50	1.00 to 1.50	7.00 to 10.00	F. R. Stevens
Golfer House.....	50	1.50	6.00 to 10.00	R. S. Gregory-Allen
Clover Hill.....	25	.....	6.00 and up	Thos. Henry
Boarding House....	15	1.25	8.00	Mrs. A. Knechtel
Cedar Grove.....	14	1.25	7.00 to 8.00	A. Lee
<b>Rosseau Falls</b>				
Boarding House....	15	.....	5.00 to 7.50	T. Bartlett
<b>Windermere</b>				
Windermere House..	200	2.00	10.00 to 14.00	T. Alken
Waskada.....	125	1.50 to 2.50	8.00 to 14.00	F. S. Hurlburt
Fife House.....	80	1.50	7.00 to 9.00	D. Fife
Rosstrevor.....	60	1.50 to 2.00	7.00 to 10.00	A. Dinsmore
King's Park.....	40	1.00	6.00	Chas. G. King
Ingle-side House..	50	1.00	5.00 to 7.00	Mrs. Inglis
Maple Leaf Hotel...	90	1.50	6.00 to 10.00	T. Hough
<b>Woodington</b>				
Woodington House..	125	1.50 to 2.00	8.00 to 12.00	M. Woods
<b>INDIAN RIVER</b>				
<b>Port Carling</b>				
Endiang.....	70	1.50	7.00 to 10.00	W. H. Foreman
Stratton House....	85	1.50 to 2.00	10.00 to 12.00	Geo. Cannell
Pt. Carling Hotel...	70	1.50 to 2.00	10.00 to 12.00	Geo. Cannell
Bay View.....	30	1.50	7.00	B. Bradley
Ironton.....	50	.....	.....	.....
<b>MUSKOSH RIVER</b>				
Franceville House..	50	1.50	7.00 to 10.00	W. France
<b>SKELETON LAKE</b>				
Newport House....	50	1.00 to 1.50	5.00	Mrs. Stevens
<b>LAKE SIMCOE</b>				
<b>Beaverton</b>				
Hamilton House....	50	1.40	7.00	A. Hamilton
Ontario House.....	25	1.40	7.00	T. J. Overend
Ethel Park Hotel (Summer House)	100	1.75	8.00 to 9.00	Geo. Veale

# The Lake Shore Line of the Muskokas

HOTEL	Accommodates	RATES		Name of Proprietor or Manager
		Per Day	Per Week	
<b>Lake Simcoe—Con.</b>				
<b>Sparrow Lake</b>				
Boarding House.....	30	\$ 1.00	\$6.00	J. A. Bagley
Idlwild.....	50	1.25	6.00 to 8.00	Jas. Whitside
Bennett House.....	80	1.00	5.00	E. S. Bennett
Peninsula Farm.....	50	1.00 to 1.50	6.00 to 9.00	N. E. Bennett
Lake View House.....	35	1.25	6.00 to 8.00	A. Miller
Unedda Rest.....	80	1.50	8.00 to 10.00	J. Clipsham
Sparrow Lake, P.O.....	40	1.00	5.00	H. Wiancko
Delmonte.....	50	1.00	6.00	J. Sanderson
Boarding House.....	30	1.00	6.00	J. Franklin
Boarding House.....	90	1.00	5.00	O. Ruehl
Venoma Point.....	40			W. Taylor
Stanton House.....	75	1.00	6.00	Capt. Stanton
Boarding House.....	50	1.00	6.00	A. Stanton
Boarding House.....	25	1.00	6.00	F. Stanton
<b>WASHAGO</b>				
Northern Hotel.....	40	1.00	5.00	E. Watkin
<b>GEORGIAN BAY</b>				
<b>Byng Inlet</b>				
Temperance Hotel...	25	1.00 to 1.50	7.00 to 9.00	G. Coleman
<b>Copper Head Island</b>				
Campbell House.....	45	1.50 to 2.00	8.00 to 10.00	A. Campbell
<b>Gore Bay</b>				
Ocean.....	35	1.50 to 2.00	9.50	R. J. Porter
Queen's.....	20	1.50 to 2.00	4.00 to 8.00	S. Burcholder
<b>Kagawong</b>				
Havelock.....	50	1.00		J. Hillard
<b>Killarney</b>				
Killarney.....	75	1.50 to 2.00	9.00 to 10.00	A. Macdonald
<b>Little Current</b>				
Queen's.....	50	1.50 to 2.00	7.00 to 10.50	W. McMinn
Mansion House.....	50	1.00 to 1.50	7.00 to 9.00	G. Sims
<b>Manitowaning</b>				
Queen's.....	50	1.00 to 1.50		John Sharpe
The Manitou.....	50	1.00 to 1.50		H. D. Brainard
<b>Minnicoganashene</b>				
Minnicoganashene.....	120	1.50 up	8.00 up	Capt. J. C. Cantley
<b>PARRY HARBOR</b>				
Hotel Kipling.....	150	1.50 to 2.00	8.00 to 12.00	C. A. Gentles
Montgomery.....	50	1.00 to 1.50	5.50 to 7.00	F. K. Montgomery
<b>PARRY SOUND</b>				
Belvidere Hotel.....	150	2.00 to 2.50	10.00 to 12.00	J. K. Paisley
Mansion House.....	75	2.00	8.00 to 12.00	Jos. McAvoy
<b>POINT AUX BARIL</b>				
Bellevue.....	40	1.00 to 2.00	6.00 to 12.00	E. Oldfield
The Ojibway.....	2.00	2.50	10.00 to 14.00	H. C. Davis
<b>ROSE POINT</b>				
Rose Point Summer Resort.....	200	2.50 to 3.50	15.00 to 18.00 Special rates to families	W. F. Thompson
<b>TORONTO</b>				
King Edward Hotel.	750	{ 1.50 upwd 3.50 upwd	{ Europ. Plan Amer. Plan	{ Wm. C. Bailey G. Percival
New Carlton.....	50	1.25 upwd		McGaw & Winnett
Queen's.....	400	3.00 upwd		Nelson Bros.
Rossin House.....	500	{ 2.00 to 4.00 1.00 to 1.50	{ Amer. Plan Europ. Plan	
Walker House.....	300	2.00 to 3.00		
English Chop House.	75	1.00 upwd	Europ. Plan	— Doran
Arlington Hotel.....	200	2.00 to 4.00		E. R. Hurst
Palmer House.....	300	2.00 to 3.00		J. C. Palmer
Richardson House...	100	1.50		S. Richardson
Elliott House.....	150	2.00		Jno. F. Elliott
Grand Union.....	300	1.00 to 1.50	Europ. Plan	C. A. Campbell
Union House.....	75	1.00 to 1.25		Jas. McGuire
Grosvenor House...	75	1.50		F. Wismer
Iroquois.....	200	2.00 to 2.50		G. A. Graham
Gladstone Hotel.....	100	1.50 to 2.00		Turnbull Smith
Tremont House.....	150	1.50 to 2.00		J. D. Prentiss
Somerset House.....	50	1.50 to 2.00		C. Smuck
Leader Hotel.....	50	1.00	Europ. Plan	E. Sullivan
Imperial Hotel.....	50	.50 to 1.00	Europ. Plan	W. C. Martin
Elboner.....	50	1.00	Europ. Plan	Ed. Kerr
Moorish PalaceHotel	75	1.50 to 2.00	Europ. Plan	Phil Davey
Grand Central Hotel	150	1.00 to 1.50		P. E. Collen

## Canadian Northern Ontario Railway



# Niagara Navigation Company

CONNECTING

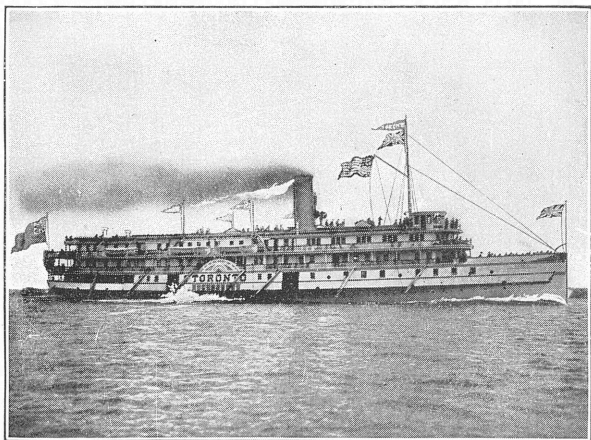
BUFFALO, NIAGARA FALLS,  
TORONTO

Toronto is the gateway to the Canadian Northern Summer Resorts. New York Central Railway trains and Niagara Gorge Electric cars run to Lewiston, N.Y., Michigan Central trains to Niagara-on-the-Lake, Ont., and International Railway Electric cars to Queenston, Ontario, connecting with the beautiful large lake steamers "Cayuga," "Chippewa," "Corona" and "Chicora," which make 6 trips daily (Sunday excepted) via the lower Niagara River and Lake Ontario to Toronto. This is the most attractive route for Summer travel.

Connection is made at Toronto with Canadian Northern Ontario Railway for Muskoka Lakes, Parry Sound, and Northern resorts; also with the R. & O. Nav. Co.'s steamers for St. Lawrence River points.

All important railroads and steamboat companies sell tickets to Toronto via Niagara Navigation Company. Write to B. W. Folger, Manager, Toronto, Canada, for illustrated booklet.

## The Lake Shore Line of the Muskokas



Steamer "TORONTO"

---

# Richelieu & Ontario Navigation Co.

Connecting with the  
Canadian Northern Ontario Ry.

FOR THE MUSKOKAS AND PARRY SOUND

---

Commencing June 1st, steamers leave Toronto daily except Sunday, from July 1st to Sept. 14th daily, for Charlotte (Port of Rochester), 1,000 Islands, Montreal, Quebec and the Saguenay River.

**EASTBOUND**—Direct connection at Charlotte with N. Y. C. & H. R. R. for Rochester, Albany, Boston, New York and all New England and Atlantic Seaboard points.

**WESTBOUND**—Passengers from New England and Atlantic Coast States can make connection at Charlotte (Port of Rochester) with steamers leaving there at 11.45 P.M., arriving in Toronto early the following morning in time to connect with CANADIAN NORTHERN ONTARIO RAILWAY for MUSKOKA TOURIST RESORTS.

# Canadian Northern Ontario Railway

## HOW TO REACH **Sparrow Lake, Muskoka Lakes, Parry Sound and Georgian Bay**

### **From Buffalo**

New York Central to Lewiston, Niagara Navigation Co. to  
Toronto, and Can. Nor. Ont. Ry. to——

New York Central or Lehigh Valley to Niagara Falls, N.Y.,  
Great Gorge Route to Lewiston, Niagara Nav. Co.  
to Toronto, Can. Nor. Ont. Ry. to——

Michigan Central to Niagara-on-the-Lake, Niagara Nav.  
Co. to Toronto and Can. Nor. Ont. Ry. to——

### **From Niagara Falls**

Niagara, St. Catharines and Toronto Ry. via Port Dalhousie,  
and steamer to Toronto and Can. Nor. Ont. Ry.  
to——

### **From Charlotte**

(Port of Rochester)

Richelieu & Ontario Nav. Co. to Toronto and Can. Nor.  
Ont. Ry. to——

### **From Detroit**

Wabash Ry. to Niagara Falls, N.Y., New York Central or  
Great Gorge Route to Lewiston, Niagara Nav. Co.  
to Toronto, Can. Nor. Ont. Ry. to——

Mich. Cent. Ry. to Niagara-on-the-Lake, Niagara Nav. Co.  
to Toronto, Can. Nor. Ont. Ry. to——

### **From Quebec, Montreal and Intermediate Points**

Richelieu & Ontario Nav. Co. to Toronto and Can. Nor.  
Ont. Ry. to——

### **From Hamilton**

Hamilton Steamboat Co. to Toronto and Can. Nor. Ont.  
Ry. to——

If through tickets cannot be obtained via Can. Nor. Ont.  
Ry., purchase to Toronto only and re-purchase at that point to  
intended destination.

Baggage is transferred free between boat and train at  
Toronto on through tickets.

### **FAST SERVICE**

Direct to Centre Lake District.

Solid Vestibuled Trains.

Most modern and luxurious type of Parlor  
and Sleeping Cars.

## **MOST CONVENIENT WAY THE SCENIC ROUTE THE SHORT LINE**

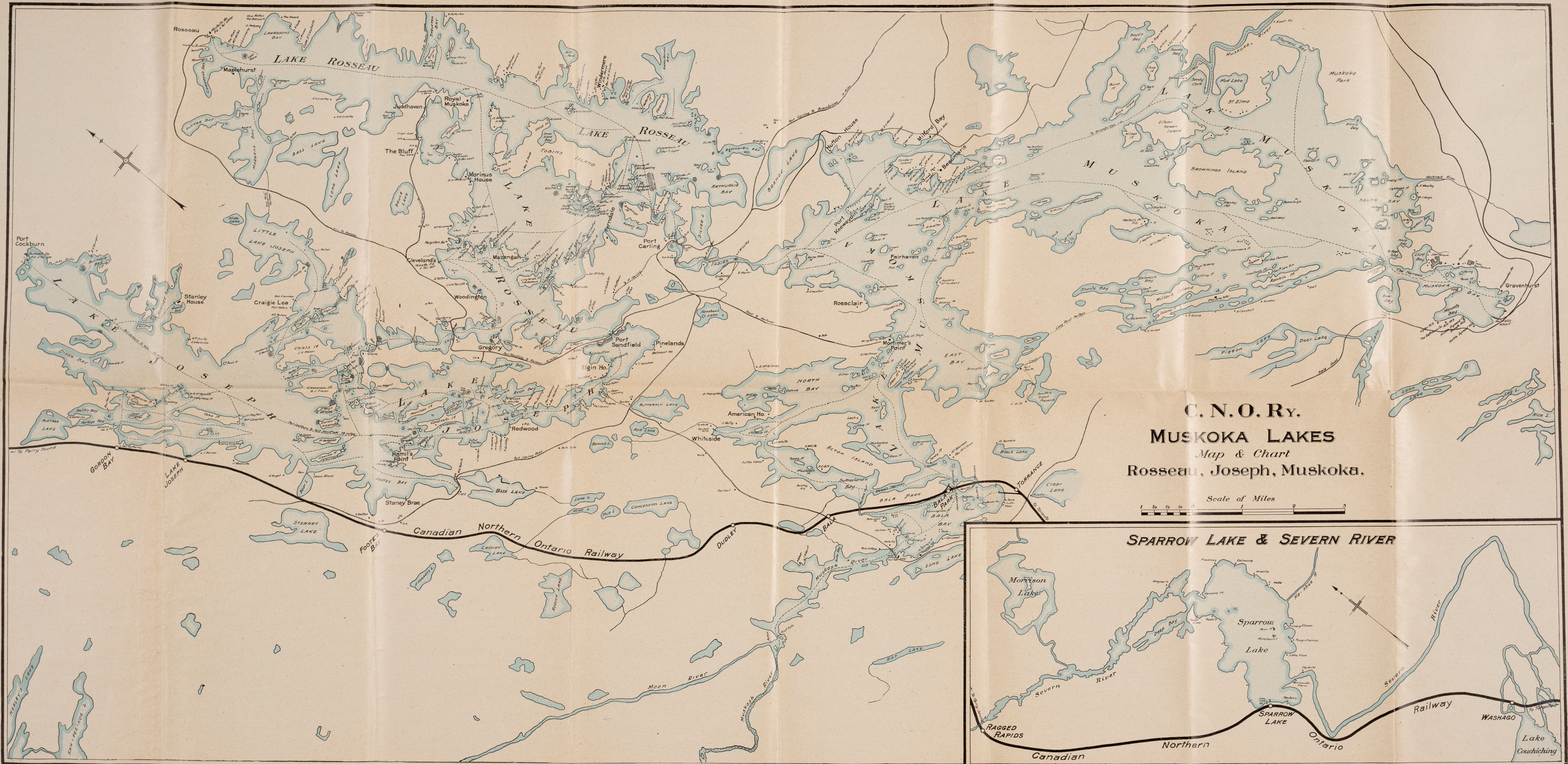
to

**Muskoka Lakes, Parry Sound and Georgian Bay**

---

CAN. NOR. ONT. TRAINS RUN TO AND FROM UNION STATION, TORONTO









# Canadian Northern Ontario Railway

**General Offices**  
Canadian Northern Building  
**TORONTO, ONT.**

---

## TICKET OFFICES

Boston, Mass. . . . . Raymond & Whitcomb, 306 Washington St.  
Beaverton, Ont. . . . J. W. Nicholson, Agent.  
Chicago, Ill. . . . . Raymond & Whitcomb, 133 E. Jackson Blvd.  
Hamilton, Ont. . . . E. Brown & Son, Ticket Agents.  
New York, N.Y. . . . Raymond & Whitcomb, 25 Union Square  
Owen Sound, Ont. J. K. McLaughlan, Ticket Agent  
Parry Sound, Ont. J. H. Knifton, Ticket Agent  
Philadelphia, Pa. . Raymond & Whitcomb, 1005 Chestnut St.  
Pittsburg, Pa. . . . R. H. Bell, Com'l Agent, 311 Bessemer Bldg.  
Pittsburg, Pa. . . . Raymond & Whitcomb, 522 Smithfield St.  
Rochester, N.Y. . . G. T. Amsden, Tkt. Agt., Union Ticket Office  
Sault Ste. Marie, Ont. R. H. Carney, Ticket Agent  
Springfield, Mass. Raymond & Whitcomb, 404 Main St.  
Toronto, Ont. . . . . Ticket Offices, cor. King and Toronto Sts. and  
Union Station  
Worcester, Mass. . Raymond & Whitcomb, 385 Main St.

---

For full information, illustrated pamphlets and maps,  
write Ticket Agents, or

**C. PRICE GREEN,**  
Passenger Agent,  
Cor. King and  
Toronto Sts.  
**Toronto**

**WM. PHILLIPS,**  
General Pass. Agt.  
**Toronto**

