

THE MAIL ORDER FIXTURE HOUSE

... Practical ...
Wood Display Fixtures

AT A LOW PRICE
Sold by Mail Order



No. 415

COLONIAL THREE TOP TABLE

Height over all, 36". Tops, 9" x 13".

Birch, Mahogany, or Walnut finish.....each \$14.00

This folder is our only salesman and show place.

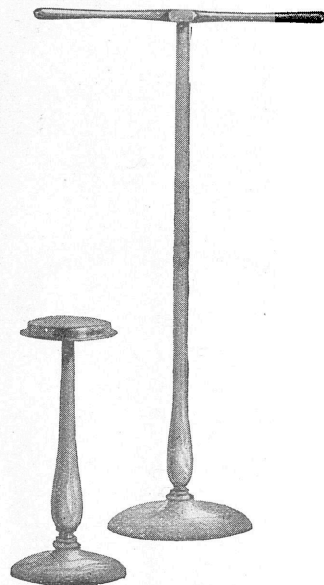
WE ARE CHEAPER.

Every fixture is made by us in our own factory, and is
produced to meet the demand for a low price
fixture made in a better way.

The A.D.F. Co., Ltd.

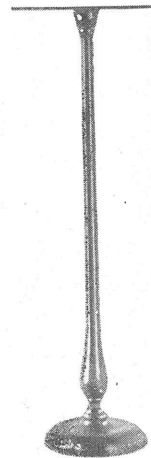
14 MILLSTONE LANE

TORONTO :: ONT.



No. 103
COLLAR STAND
12" 15" 18" Each \$2.00

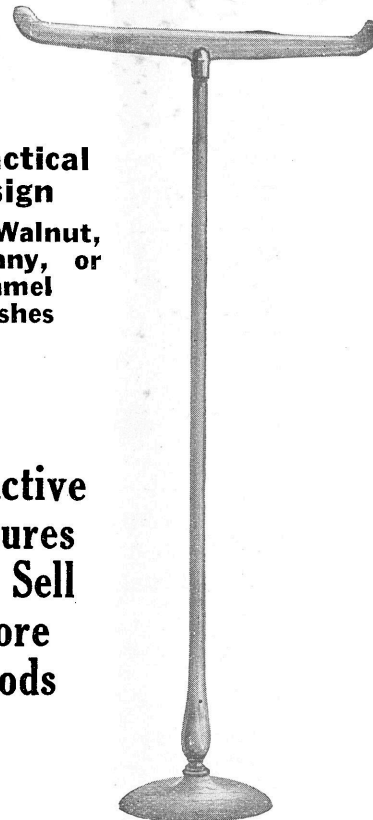
No. 104
TIE STAND
18" Cross Bar. Each
30" x 36"... \$2.75
42" x 48"... 3.25
54" x 60"... 3.75



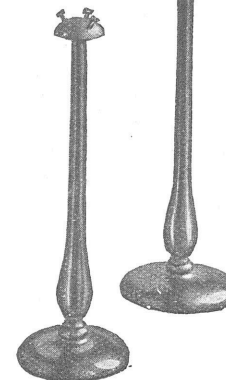
No. 185
FLAT TOP STAND
4" x 8" top.
12" x 18" each \$2.25
24" x 30" " 2.75

A Practical Design
Birch, Walnut,
Mahogany, or
Enamel
Finishes

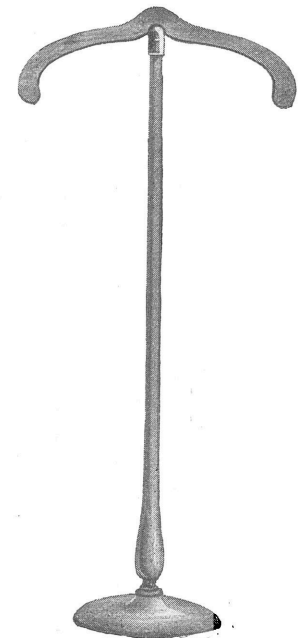
Attractive Fixtures will Sell More Goods



No. 107A
DRAPING STAND
(Heavy)
48" high each \$4.50
54" x 60" " 5.00

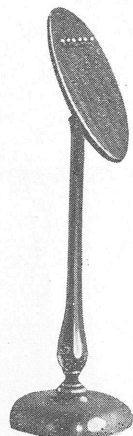


No. 102
MILLINERY STANDS
12" x 18" x 24" each \$2.00
30" x 36"... 2.25
42" x 48"... 2.75
54" x 60"... 3.25

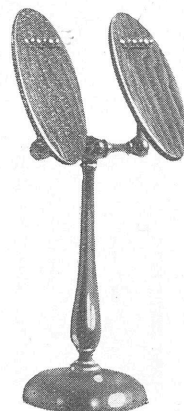


No. 108
GOWN STAND
18" x 24".....each \$2.50
30" x 36"..... " 2.75
42" x 48"..... " 3.25
54" x 60"..... " 3.75

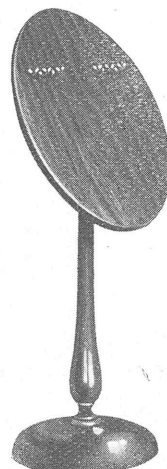
Note.—No. 192.
LINGERIE STAND,
made same heights and
same price as No. 108.



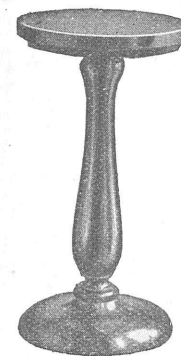
No. 500
SINGLE SHOE STAND
Adjustable top.
12" x 18" each \$2.25
24" x 30" " 2.75



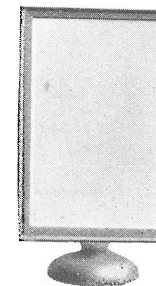
No. 501
DOUBLE SHOE STAND
Adjustable top.
6" x 12" high \$3.25
18" x 24" high 3.50



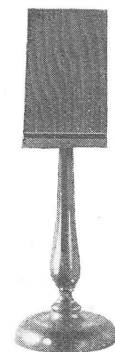
No. 504
DOUBLE SHOE STAND
12" x 18".....\$3.00
24" x 30"..... 3.25



No. 101
PEDESTAL
12"each \$3.25
18" " 3.50
24" " 4.00



No. 106
CARD FRAME
7" x 11" each \$2.50
11" x 14" " 3.25
9" x 12" " 2.75



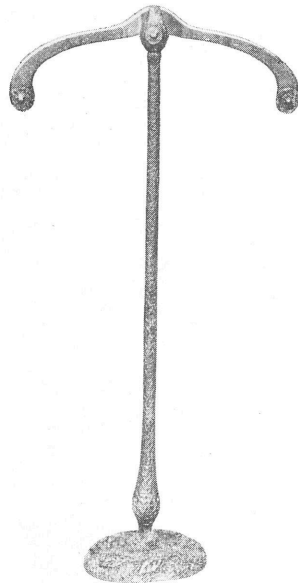
No. 183
BOX EAZEL
4" x 8" top.
12" x 18" each \$2.50
24" x 30" " 3.00

Art Metallic Fixtures

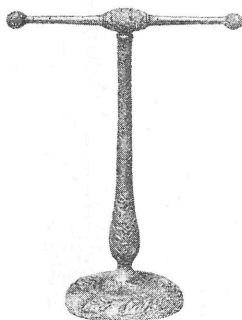
WOOD FIXTURES

Covered with an indestructible art metallic composition. Just the fixture needed to brighten up your display.

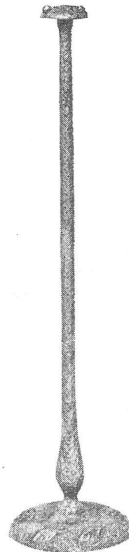
Opalescent and Hammered Brass or Polychrome Finishes.



**M/108
GOWN STAND**
18" x 24" each \$3.75
30" x 36" " 4.00
42" x 48" " 4.50
54" x 60" " 5.00



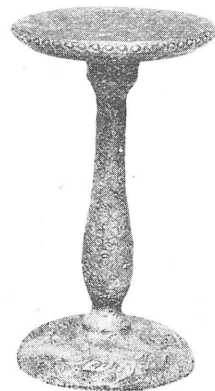
**M/109
TEE STAND**
12" Cross Bar.
18", 24" and 30".
Each \$3.50



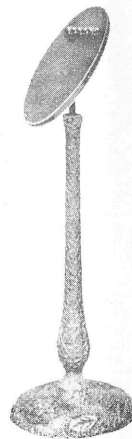
**M/102
MILLINERY
STAND**
12", 18" and 24"
each \$2.75
30" x 36" " 3.25
42" x 48" " 3.75
54" x 60" " 4.25



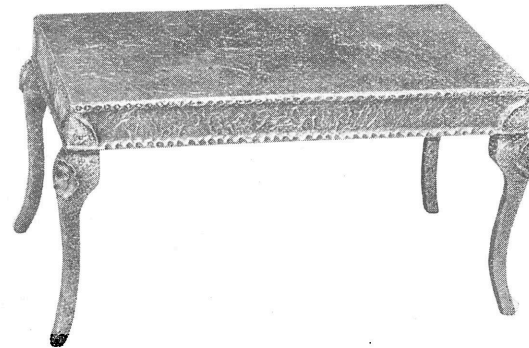
**M/106
CARD FRAME**
7" x 11" each \$3.50
9" x 12" " 3.75
11" x 14" " 4.25



**M/101
PEDESTAL**
9" base, 10" top.

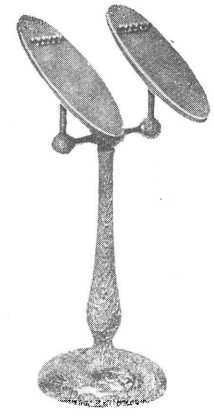


**M/500
SINGLE SHOE**
Adjustable top.
12" x 18" each \$3.25
24" x 30" " 3.75



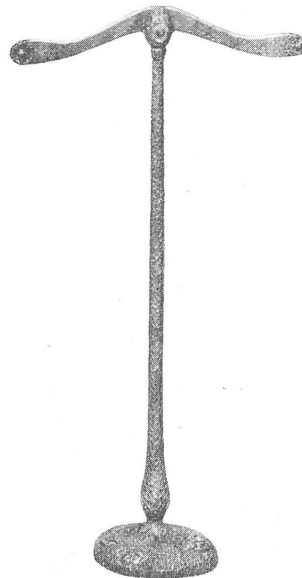
No. M/193

PLATEAU—12" x 22" top. Three heights.
6" higheach \$ 8.00
12" high " 9.00
18" high " 10.00

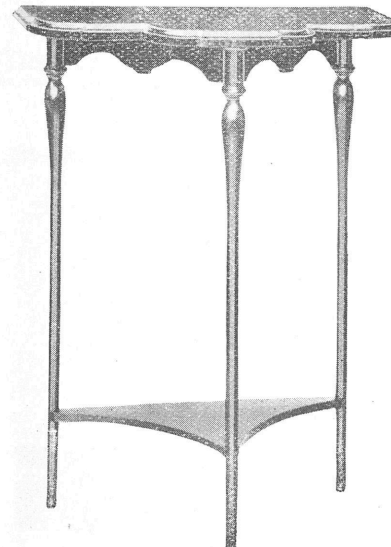


M/501

**DOUBLE SHOE
STAND**
Adjustable top.
6" x 12" ea. \$3.75
18" x 24" " 4.25

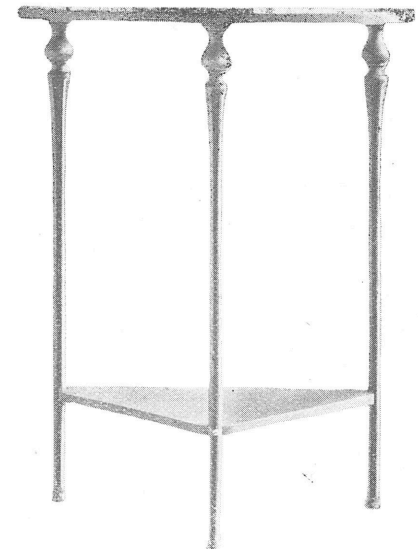


**M/192
LINGERIE STAND**
18" x 24" each \$3.75
30" x 36" " 4.00
42" x 48" " 4.50
54" x 60" " 5.00



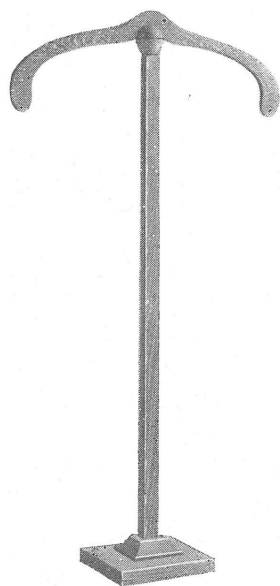
No. 400

WALL TABLE
Height 36", top 12" x 22".
Birch, Mahogany, or
Walnut Finish. ea. \$12.00

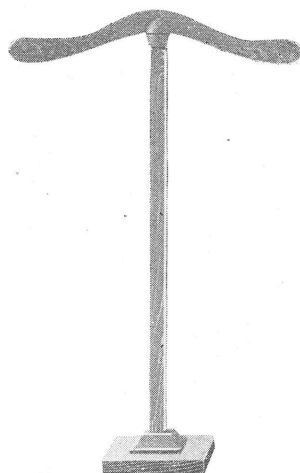


No. 407

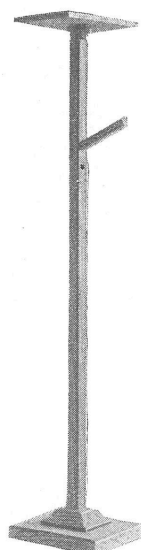
**OVAL SHAPE WALL
TABLE**
Height 36", top 10" x 22".
Birch, Walnut, Mahog-
any or Oak Finish.
Each \$7.50



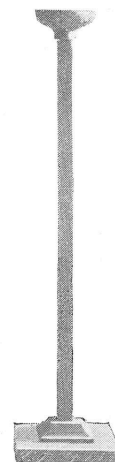
**S/108
GOWN STAND**
24"each \$1.75
30" x 36" " 2.25
42" x 48" " 2.75
54" x 60" " 3.25



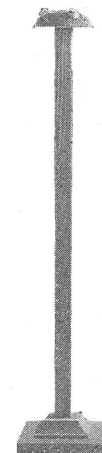
**S/192
LINGERIE STAND**
24"each \$1.75
30" x 36" " 2.25
42" x 48" " 2.75
54" x 60" " 3.25



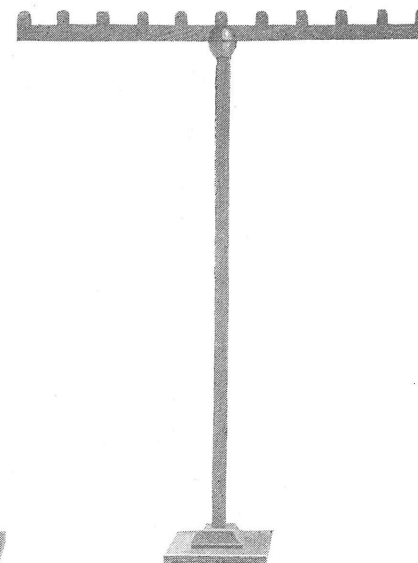
**S/102B
FLAT TOP HAT
STAND**
18" x 24" each \$1.75
30" x 36" " 2.25
42" x 48" " 2.75



**S/102A
MEN'S HAT
STAND**
12", 15", 18" ea. \$1.50
24", 30", 36" " 1.75
42", 48" " 2.25

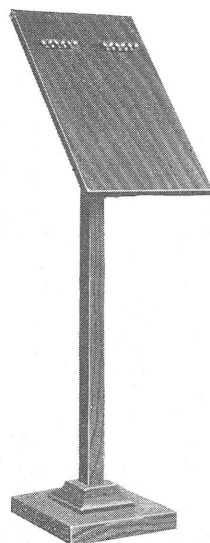


**S/102
HAT STAND**
12", 15", 18" ea. \$1.25
24", 30", 36" " 1.50
42", 48" " 2.00

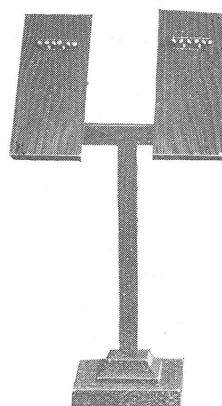


**S/1012
TIE STAND**
Holds 10 dozen Ties.
24", 30"...each \$3.50

These are Simple Designs, but---THEY DO THE WORK

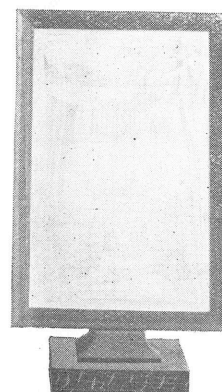


**S/504
DOUBLE SHOE
STAND**
Adjustable top.
12" x 18" each \$1.75
24" x 30" " 2.25

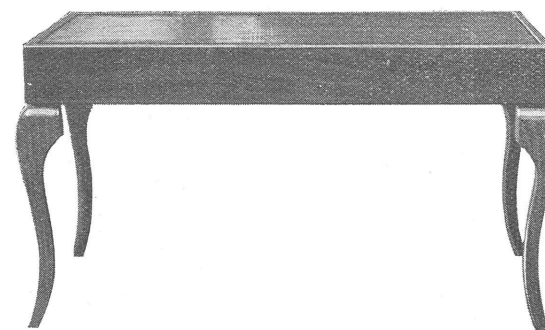


**S/500
SINGLE SHOE
STAND**

Adjustable top.
12" x 18" each \$1.25
24" x 30" " 1.50



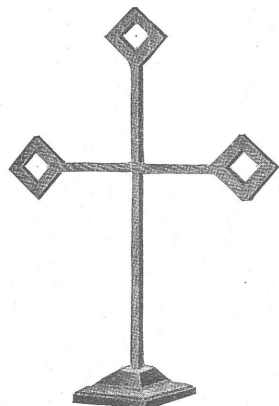
**S/106
CARD FRAME**
Each
7" x 11" Card \$1.50
11" x 14" Card 2.00
9" x 12" Card 1.85



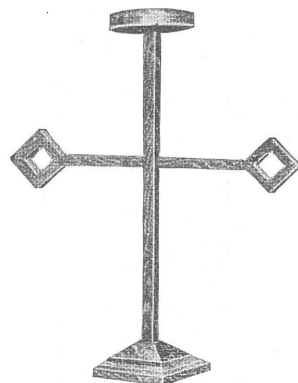
**No. S/193
REMOVABLE TOP AND LEGS**
Size of top, 12" x 12".

6" higheach \$ 7.50
12" high " 8.50
18" high " 9.50
24" high " 10.00

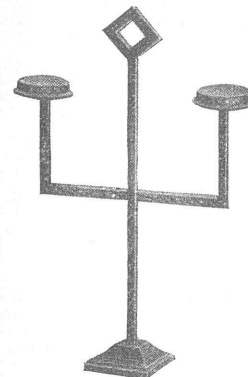
ABOVE FIXTURES MADE IN BIRCH, MAHOGANY, OR WALNUT, AND OAK, FINISHES.



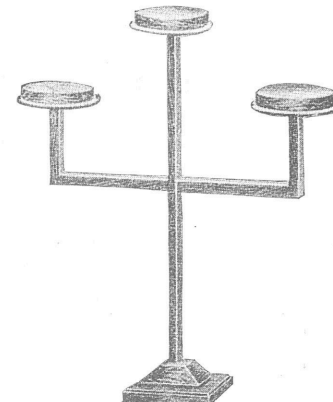
No. 1761
DIAMOND CROSS
24" higheach \$3.00



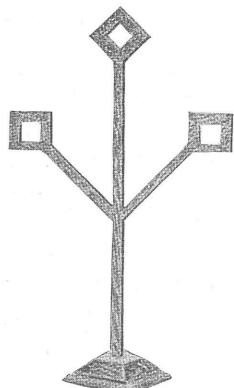
No. 1758
COLLAR AND TIE
STAND
24" higheach \$3.00



No. 1766
COLLAR AND TIE
STAND
Each \$3.50

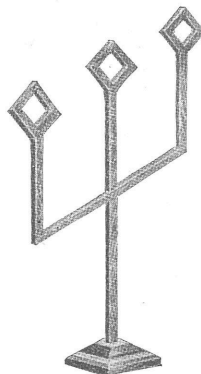


No. 1759
COLLAR AND TIE
STAND
Each \$3.50

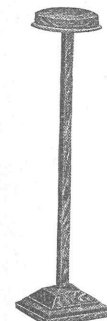


No. 1762
DIAMOND
HABERDASHER
24" high..each \$3.00

**Good Display
is a Sure Maker
of Dividends
in
Bigger Sales**

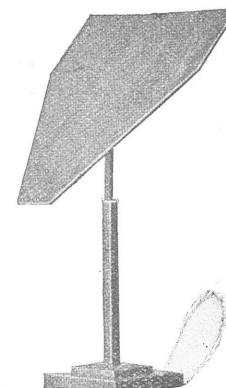


No. 1769
DIAMOND
ANGLE STAND
24" high..each \$3.00

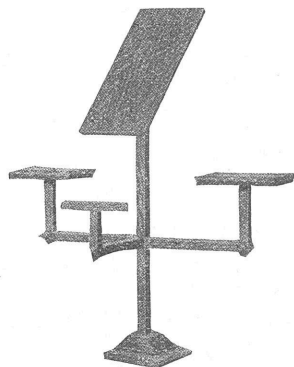


No. 1765
COLLAR STAND
12", 15", 18" ea. \$1.25
24", 30", 36" " 1.50

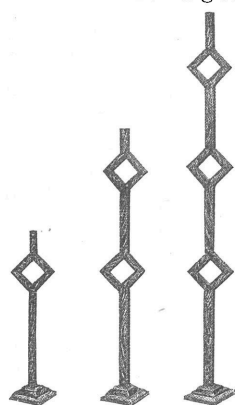
**These Fixtures
can be had in Birch
Mahogany, Walnut,
Fumed or Golden
Oak Finishes, and
at the one price
quoted**



No. 1758
SHIRT STAND
Top 9" x 18"
Extension Standard.
Each \$3.50



No. 1767
CANDELABRA STAND
Each \$5.50



No. 1752
DIAMOND STANDS
Heights 12", 18", 24".
Each \$1.00, \$1.50, \$2.00



No. 1753
COLLAR STAND
36" high, holds
6 collars..ea. \$6.50

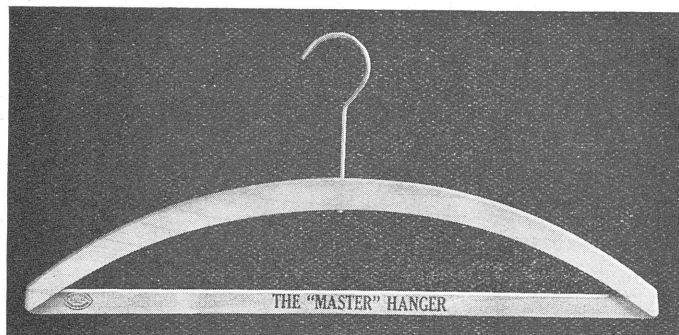
**We manufacture all kinds of Wood
Specialties :**

TRAYS FOR SMALLWARES,
CASES & CABINETS FOR ALL
PURPOSES

WINDOW BACKGROUND
SPECIAL DISPLAY STANDS

Tell Us Your Needs

The "Master" Suit Hanger



17" wide, $\frac{3}{8}$ " thick, very strong and well made.

This is the cheapest suit hanger ever offered the trade.

Per 100, plain	\$ 6.00
Per 250, printed	14.00
Per 500, printed	27.00
Per 1,000, printed	45.00

Printed one side bottom bar only, any color ink.

Good-will Builders

The hangers illustrated on these pages, when printed with your name, make wonderful advertising mediums.

Give one with each garment you sell.

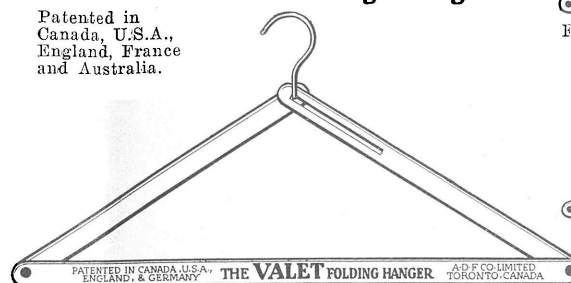
Your customers will appreciate receiving them.

Absolutely the cheapest and most direct way to advertise your business.

Send for Sample Hanger

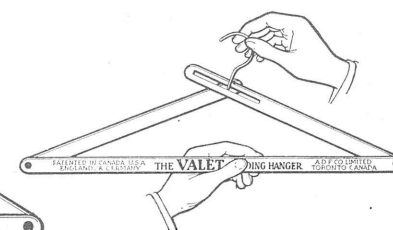
The "VALET" Folding Hanger

Patented in
Canada, U.S.A.,
England, France
and Australia.



Hanger Ready for Use.

Patented in Canada, U.S.A., England, & Germany. THE VALET FOLDING HANGER. A.D.F. CO. LIMITED, TORONTO, CANADA.
Folded as they come from the Carton.



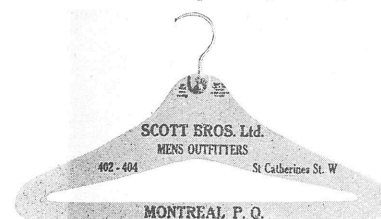
"Valet" Hangers are Extended Instantly.

"VALET" Hangers have no rough projections. They are made 17" wide, of clear hardwood, tinned wire hook, hangers are nicely finished in orange stain and waxed. Packed in cartons containing 500 or 1,000 hangers.

Price includes printing one side bottom bar only.

Lots of 500	\$27.00
1,000 to 2,000	45.00
3,000 to 5,000	40.00

Write for sample—Special price for large Quantities.

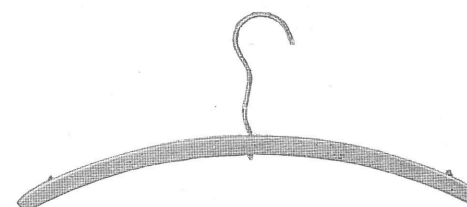


No. 51 AD-FORM FIBRE HANGERS SUIT HANGER

Made of heavy Fibre Mill Board $\frac{1}{8}$ " thick, tinned wire hook. This hanger affords the greatest amount of advertising space. Price includes printing one side only. Any color ink.

Lots 500	\$29.00
Lots 1,000	48.00

Add \$3.00 extra when printed two sides.



No. 45 WAIST OR DRESS HANGER (Sawn)

$\frac{3}{8}$ " thick with Rubber Bumpers to keep garments from falling off. 16" wide.

Price including printing one side, any color ink.

Lots 250	\$12.00
Lots 500	20.00
Lots 1,000	35.00



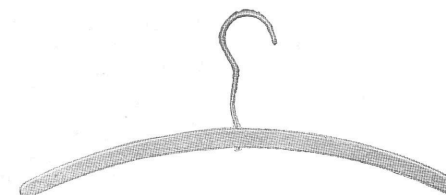
No. 61 SKIRT HANGER

Made of same material as No. 51 hanger. Price including printing one side only.

Lots 500	\$23.00
Lots 1,000	37.00

Add \$2.50 extra for printing two sides.

Takes up less space than any other hanger.



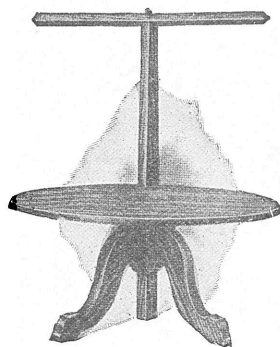
No. 40 WAIST OR DRESS HANGER (Sawn)

$\frac{3}{8}$ " thick, Smooth Wax Finish. 16" wide.

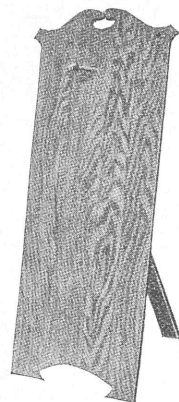
Price including printing one side, any color ink.

Lots 250	\$ 9.50
Lots 500	15.00
Lots 1,000	25.00

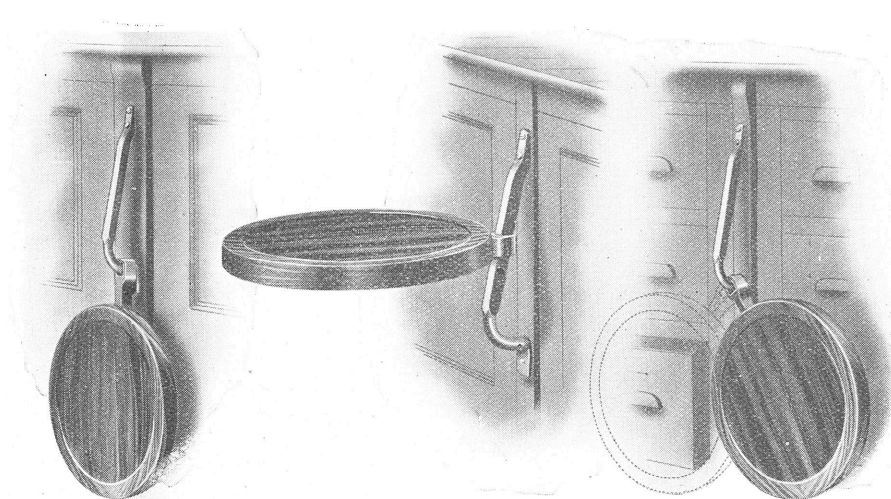
These Fixtures Will Make a Very Catchy Display



No. 1726
**CLOTHING
DISPLAY TABLE**
Oval top.
15" x 30"...each \$12.00

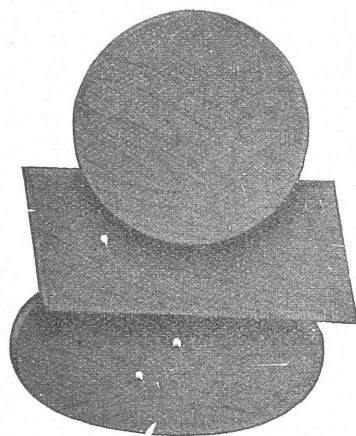


No. 1749
CLOTHING EAZEL
Fine for Men's Clothing
or Coats.
\$ 6.00 each.



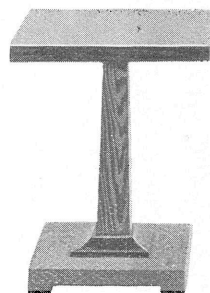
THE LISTER QUICK-SET SEAT (Patented)

The Perfect Stool for use behind counter or wherever space is valuable—never in the way—instantly made available for use. Metal parts are dropped steel forgings, mahogany finish seats—very strongly made. A trial will convince you. Price each, net.... \$3.50

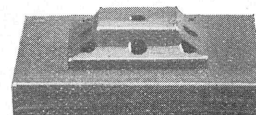


No. 1725
PEDESTAL SLABS

15" x 15"...	each	\$1.75
20" x 20"....	"	2.50
12" x 18"....	"	2.00
18" x 24"....	"	2.50

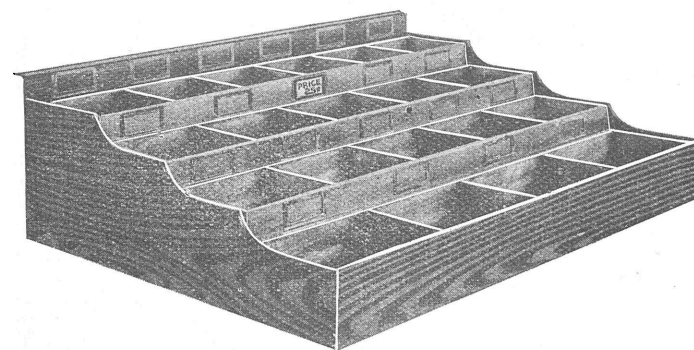


No. 1756
PEDESTAL
12"each \$2.75
18" " 3.25
24" " 3.75



No. 1736
**CANE AND
UMBRELLA STAND**
Holds 9 pieces.
Each \$2.75

Practical Cabinet for Notions



No. 1622

Width 28", height at back 10 $\frac{3}{4}$ ", height in front 4 $\frac{1}{8}$ ".
Made in three lengths. Boxes removable. Interior made of bass-wood, finished natural, mesh wire bottoms to prevent accumulation of dust. The frame is made of polished oak, birch, mahogany, or walnut. Card holders for price tickets on all compartments.

37" long	each	\$21.00
48" long	"	27.00
60" long	"	31.00

ABOVE FIXTURES MADE IN BIRCH, MAHOGANY, OR WALNUT, AND OAK, FINISHES.