



Fall
1924

THE "2" BARKERS, LTD.
AMHERST, N.S.



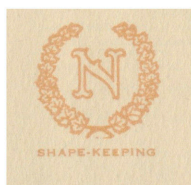
Announcing

THAT the side fastening for coats is without competition and is marked with one or two fancy buttons. Smaller buttons are largely used for trimming, especially on the more tailored styles. Fur banding for trimming is a new feature in addition to the usual fur collar and cuffs. The straight line coat predominates. Belts are conspicuous by their absence. In addition to the prevailing shades of Autumn browns and fawns there will be forest greens and coppertones that will appeal to smart women.

Wrap around and pleated skirts are still the prevailing styles and the hips are invariably snug fitting.

Many straight line dresses are being shown with the beltless idea emphasized, while slashed tunic effects add a note of novelty. For ordinary daytime wear tailored styles with narrow shoulders and fitted sleeves are very smart. Wool crepes and fine twill fabrics are again well to the fore, while in silks much is being made of crepe satin, although crepe de chine, canton crepe and flat crepe are still very popular. Pleating, tucking, bead embroidery, fancy braids and laces add smart trimming touches.

NORTHWAY GARMENTS have that distinctiveness which not only appeals to the most discriminating wearer, but covers such a variety of styles that choosing is easy, and at prices that anyone can afford to pay. Not the least of many desirable features are their perfect fitting and "SHAPE-KEEPING" qualities. When making your selections look for the "NORTHWAY" label; it is your guarantee of lasting and perfect satisfaction.







shape keeping

Northway
GARMENTS

superior fit

4464—A misses' coat of cut Cameline lined throughout with satin finish Venetian, cut through at waist line in fancy design, showing stripes running in opposite directions, and trimmed on the sides with silk stitching and groups of buttons. The sleeves are made to match and the collar and cuffs are of Fitch fur. Sizes 14 to 20. Comes in sand, taupe, rust and tan \$57.50

4137—A junior misses' coat of cut Cameline in block design with Moufflon fur collar, and lined throughout with satin finish Venetian. The fancy cut sides are trimmed with tabs and fancy oval buttons. Sizes 13 to 19. Comes in sand, reindeer, rust, grey, brown, lanvin green \$45.00



SHAPE-KEEPING



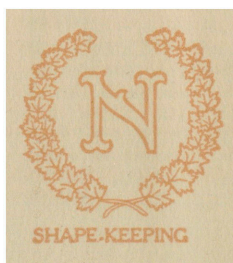
shape Keeping

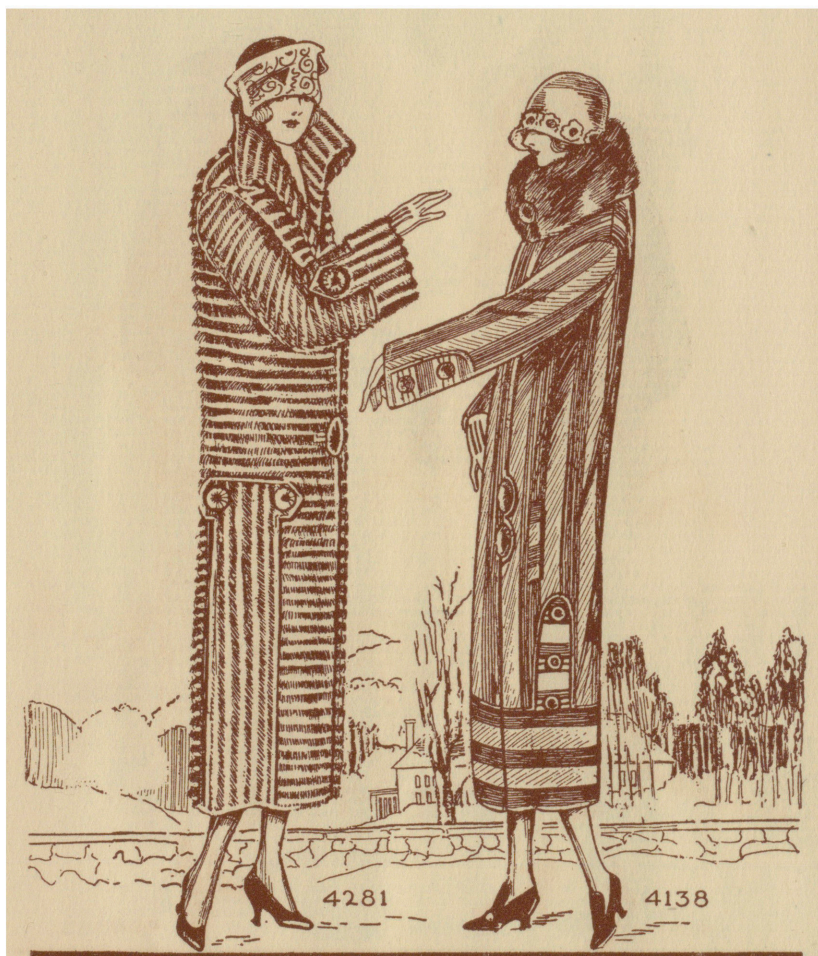
Northway
GARMENTS

Superior Fit

4131—A junior misses' coat of cut Cameline in block design lined throughout with mercerized. Sizes 13 to 19. Comes in sand, reindeer, taupe, brown, tan and lanvin green \$21.00

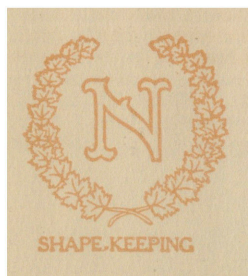
4118—A junior misses' coat of cut Cameline in small or large block design with Beaverine collar and lined throughout with twill mercerized. Sizes 13 to 19. Comes in sand, reindeer, rust, grey, brown and lanvin green \$25.00

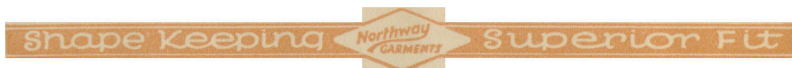
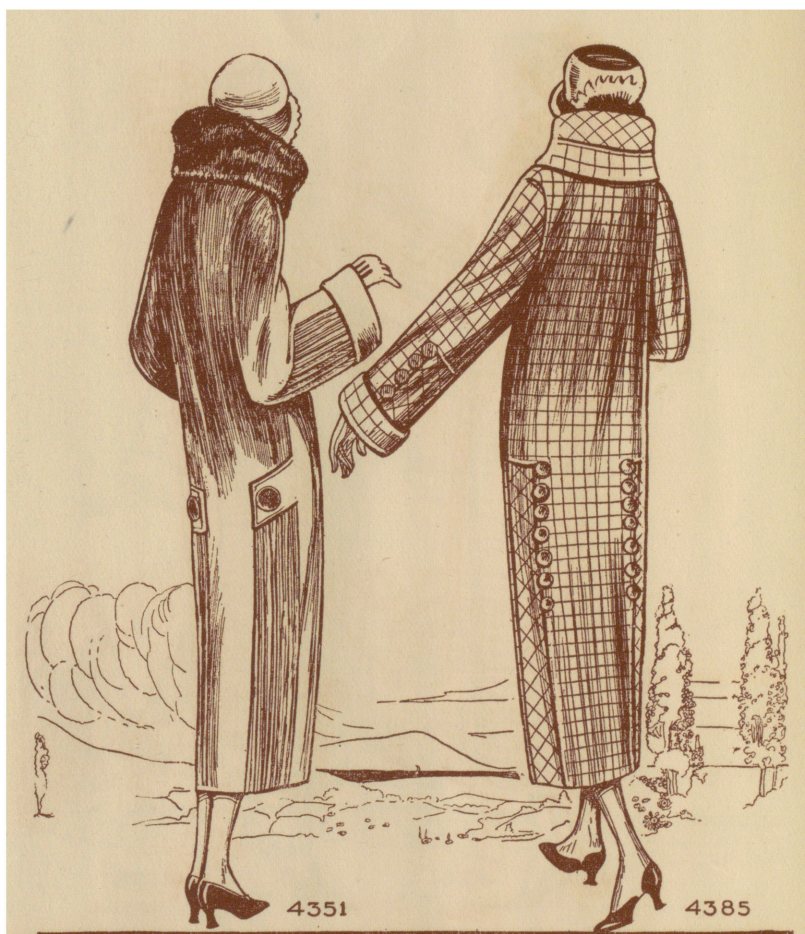




- 4281—A misses' coat of Channelcloth with fancy cut sides, and sleeves to match, and lined throughout with satin finish Venetian. Sizes 14 to 20. Comes in sand, grey and tan \$40.00
Also in wool velour woven to give the effect of cut stripes in sand and reindeer \$40.00

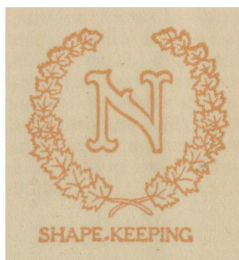
- 4138—A junior misses' coat of wool velour, woven to give the effect of cut stripes and lined throughout with satin finish Venetian. The fancy cut sides and bottom showing the stripes running cross-wise, are trimmed with tabs and buttons and the sleeves are trimmed to match. Sizes 14 to 20. Comes in taupe and reindeer \$30.00





4351—A ladies' velour coat with Beaverine collar and lined throughout with satin finish Venetian. The fancy cut back is trimmed with cording and large buttons and the sleeves are trimmed to match. Sizes 36 to 44. Comes in sand, taupe, reindeer and brown \$36.50

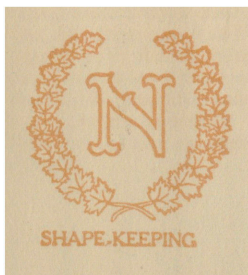
4385—A ladies' coat of cut Cameline in block design and lined throughout with satin finish Venetian. The panels in the back in bias design are finished with groups of ivory buttons, and the sleeves are trimmed to match. Sizes 36 to 44. Comes in sand, reindeer, rust, grey, brown and lanvin green \$30.00






4370—A ladies' velour coat with Beaverine collar and lined throughout with mercerized. The back is trimmed with cording and small panels with silk stitching, and the sleeves are trimmed to match. Sizes 36 to 44. Comes in sand, reindeer and brown \$29.00

4374—A ladies' coat of fine wool duvetyn in cut stripe design with collar and cuffs of Viatka Coney and lined throughout with satin finish Venetian. The back is very attractive, with pieces set in showing stripes running in opposite directions, finished with loops and half ball ivory buttons. The sleeves are trimmed to match. Sizes 36 to 44. Comes in sand, taupe and brown \$45.00

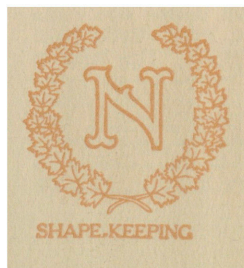




Shape Keeping  Superior Fit

4454—A misses' coat of cut Cameline in small or large block design, with Viatka Coney collar, and lined throughout with satin finish Venetian. The back and sleeves are finished with scallops trimmed with fancy buttons. Sizes 14 to 20. Comes in sand, reindeer, rust, grey, brown and lanvin green \$30.00

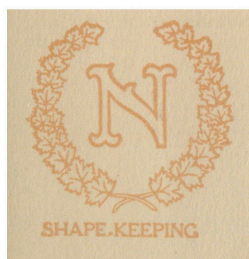
4396—A ladies' marvella coat with collar and cuffs of tipped Mouflon, and lined throughout with satin finish Venetian. The sides are trimmed with tabs finished with silk stitching and buttons, and the novelty sleeves are trimmed to match. Sizes 36 to 44. Comes in black, brown and reindeer \$67.50

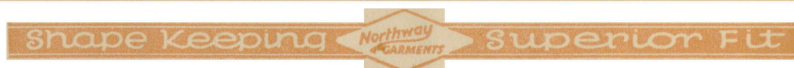




4278—A misses' coat of dullbrite with fancy cut front and sides showing the brushed mohair stripes running in opposite directions and lined throughout with satin finish Venetian. Sizes 14 to 20. Comes in beaver, reindeer and brown..... \$41.00
Also made in cut duvetyn, in striped designs. Sand, taupe and brown.... \$42.50

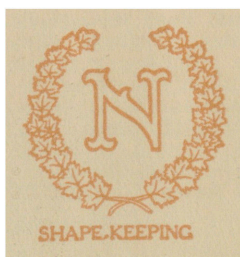
4457—A misses' velour coat lined throughout with mercerized and trimmed with bands of Beaverine. The inside of the collar is finished with silk chain stitching to match the back and cuffs. Sizes 14 to 20. Comes in sand, taupe, reindeer and brown \$33.50
Also in cut velour in stripe design, in taupe, reindeer and brown \$35.00





3850—A misses' suit of fine tricotine with narrow bias pieces inset on the sides and trimmed with groups of embroidered narrow straps. Wrap skirt with pocket. Sizes 16 to 20. Comes in navy and black \$50.00

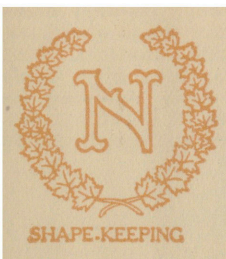
3951—A ladies' suit of fine twill cord trimmed on the fancy cut sides with numerous rows of fine tucks and ivory buttons. Sizes 36 to 44. Comes in navy and black \$52.50





5609—A misses' charmeen dress with a collar on the back, new long sleeves with flare cuffs and a narrow belt trimmed with ornaments on the back and front. Fancy black braid makes an attractive trimming. Sizes 14 to 20. Comes in black and navy \$33.50

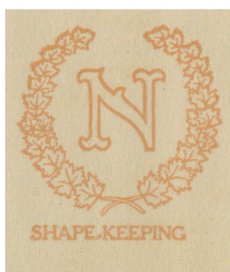
5850—A ladies' dress of wool crepe marocain. The vest, pleated panels, and sleeves are piped with a contrasting shade and trimmed with buttons to match. Sizes 34 to 44. Comes in black, navy, brown, taupe and cocoa \$25.00





5876—A ladies' canton crepe dress handsomely trimmed on the front and back with pleated panels and bead embroidery in self colors. The three-quarter sleeves are trimmed to match. Sizes 36 to 44. Comes in black, navy, brown, beige, cocoa and light grey \$41.00

5801—A ladies' canton crepe dress with loose panels of crepe Jeany, (figured crepe in self colors) on the front and back, and a tucked belt with ornaments. Fine knife pleats on the sides give ample room in walking, while retaining its straight lines. Sizes 36 to 44. Comes in black, navy, brown and cocoa.. \$42.50





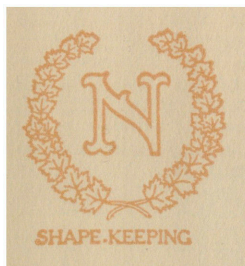
Shape Keeping

Northway
GARMENTS

Superior Fit

5695—A misses' crepe satin dress embellished with handsome silk embroidery. A contrasting shade of georgette trims the front, the new peasant sleeve, and the pleated panels on the side. Sizes 16 to 20. Comes in black, navy, brown, cocoa and light grey \$37.50

5630—A misses' canton crepe dress with a pleated cape on the back and a tie on the front trimmed with silk fringe. The pleated front of the skirt is surmounted with three folds piped with a contrasting shade and the sleeves are trimmed to match. Sizes 16 to 20. Comes in canton crepe in black, navy, brown, cocoa, whirlpool, crab-apple and jade \$28.00
Also in crepe satin in black, navy, brown, cocoa and light grey \$33.50





Shape Keeping

Northway
Garments

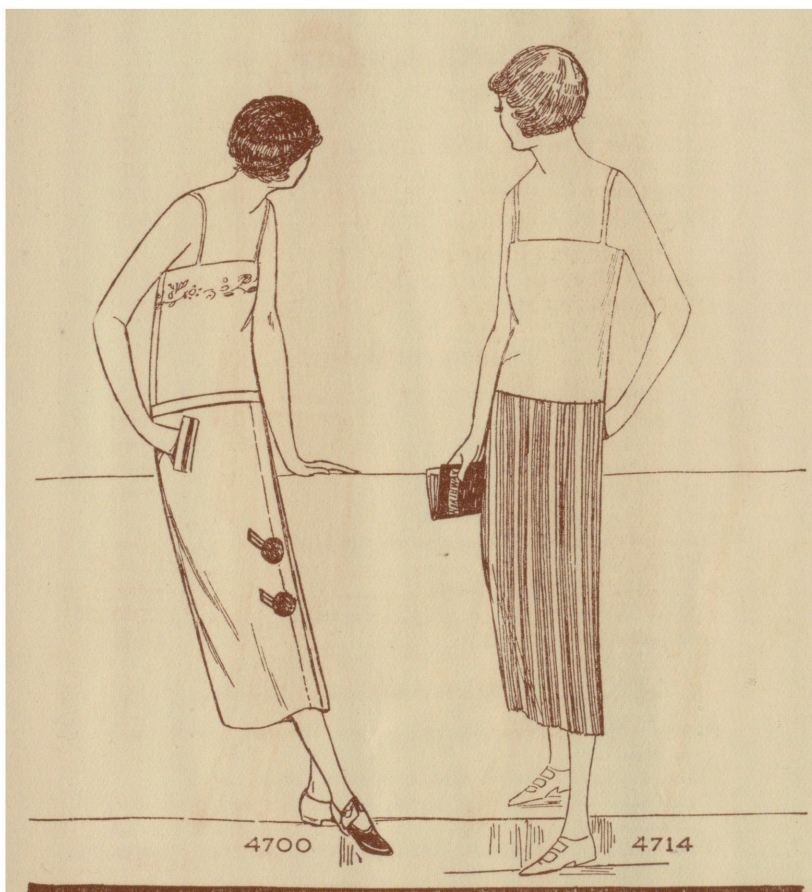
Superior Fit

5699—A misses' two-piece dress of fine charmeen in the new tunic style showing a vest of sand duvetyn trimmed with black ball buttons. The tunic closes at the neck with a link fastening and is handsomely embroidered in black and gold embroidery. Sizes 16 to 20. Comes in black and navy \$33.50

5694—A misses' flat crepe dress with a fine knife-pleated front surmounted by a lace yoke trimmed with self buttons, and sleeves trimmed to match. Loose panels trim the front and back. Sizes 16 to 20. Comes in black, navy, brown, sand, cocoa, whirlpool, light grey, powder blue, orchid, almond green, old coral and crab-apple \$30.00



SHAPE-KEEPING



shape Keeping

Northway
GARMENTS

Superior Fit

4700—A wrap skirt of checked worsted, trimmed with large fancy buttons. The buttonholes and lap are piped with a plain color to match. Comes in sand ground, with brown and green, or brown and blue overcheck. Also in black or navy, hair-line striped flannel.

Stripe\$ 9.50
Check\$11.00

4802—The same style as 4700, but made in wool crepe marocain trimmed with large pearl buttons\$9.00

4714—A wool crepe skirt with fine combination pleats on a camisole top of white lawn.\$7.50

For further particulars of skirts in various styles and materials see the following page.



SHAPE-KEEPING

SKIRTS WITH CAMISOLE TOPS

Combination Pleats:

4722—Flannel	\$5.75
4732—Fancy weave crepe	6.75
4714—Wool crepe	7.50
4712—Crepe de chine	11.50
4706—Canton crepe	15.00

Narrow Box Pleats:

4709—Wool crepe	7.50
4710—Crepe de chine	11.50

SKIRTS ON BANDS

Combination Pleats:

4721—Flannel	7.00
4733—Fancy weave crepe	8.00
4701—Fine Ottoman	9.00
4708—Wool crepe	9.00
4729—Wool crepe marocain	10.00
4705—Wool crepe, woven cord stripes	11.00
4715—Crepe de chine	12.00
4703—Silk and wool crepe	13.50
4711—Canton crepe	15.50
4702—Rochanara crepe	15.50

COLORS CAN BE HAD AS FOLLOWS:

Fancy weave crepe—Sand, cocoa, brown, navy and black.
 Flannel—Sand, taupe, beige, brown, navy.
 Plain wool crepe—Grey, sand, cocoa, brown, navy and black.
 Wool crepe marocain—Black, navy, brown, taupe, cocoa.
 Wool crepe, woven cord stripe—Grey, sand, cocoa, navy, black.
 Silk and wool crepe—Cream, grey, navy, black.
 Crepe de chine—Grey, sand, cocoa, brown, navy, black and cream.
 Canton crepe—Grey, sand, cocoa, brown, navy, black.
 Rochanara crepe—Grey and black.
 Fine twill Ottoman—Grey and sand.

