

62 YEARS IN BUSINESS

CLARKE'S
CATALOGUE FOR
FALL 1914



TORONTO

CANADA

CLARKE'S



QUALITY

List of Goods for Immediate Delivery

Gloves and Mitts
Sheepskin-Lined Coats
Blizzard-proof and
Working Clothing
Working and Outing Shirts
Moccasins and Larrigans
Woollen Mitts and Socks

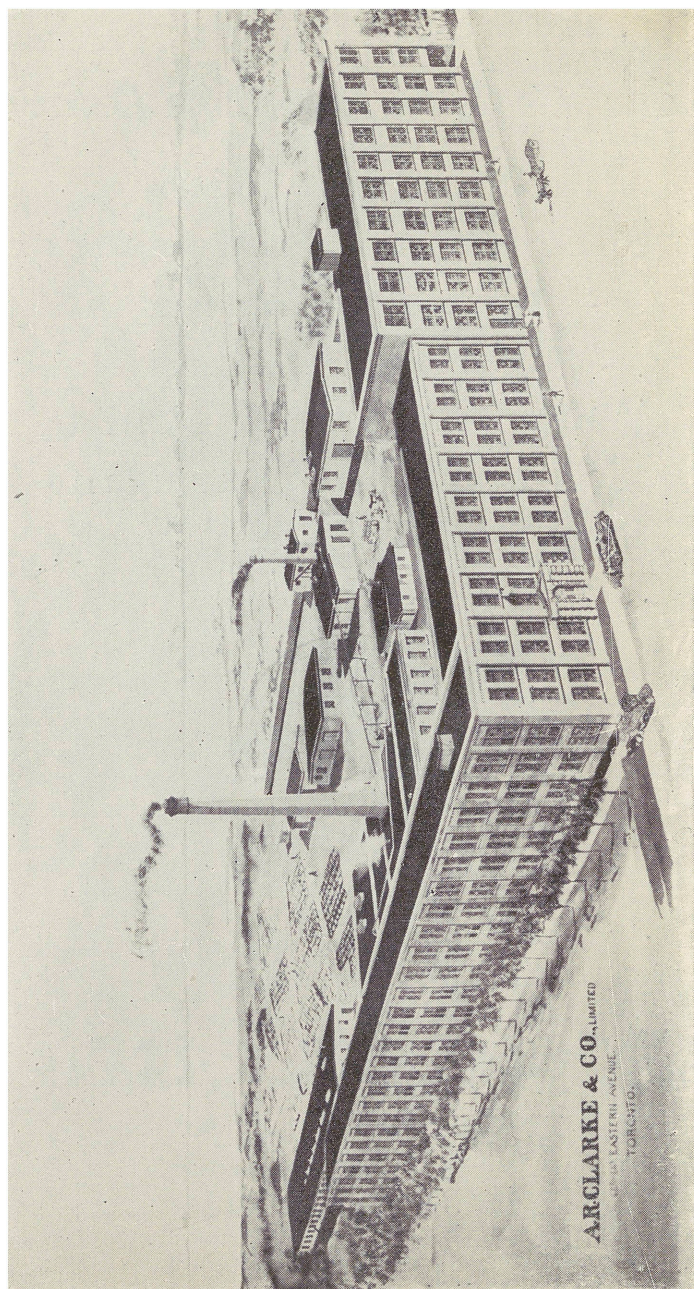


OUR TRADE MARK
MEANS QUALITY

FALL 1914

A. R. Clarke & Co., Limited

Offices and Factories
633-661 Eastern Avenue
Toronto, Canada



BIRD'S-EYE VIEW OF THE OFFICES AND FACTORIES

A. R. C. Price List, Fall 1914

APPRECIATING the fact that the average dealer did not buy as heavily as usual this year, we have compiled a price list whereto he may resort when his stock becomes a little low.

Immediate Delivery may be had for any of these lines; they are all carried in stock.

Best Value is assured. We manufacture every article, **Brand** and **Guarantee** it, and submit the goods for your inspection, agreeing to take them back and cheerfully refund the money if they are not satisfactory in every way.

When Ordering, always state how you wish the goods to be shipped, else they will be sent the cheapest way.

Terms—2% ten days, net sixty days, from 1st of month following date of shipment. (Subject to approved credit.)

To Fall Visitors—We are maintaining a sample room at our factory, 633-661 Eastern Ave. (take an eastbound King car to Caroline Ave., then turn south), and often have odds and ends, which you can buy to advantage. Our new and commodious Offices, Warehouse and Tannery are open for your inspection, and we would be pleased to show you just how the famous A.R.C. Brand goods are made.

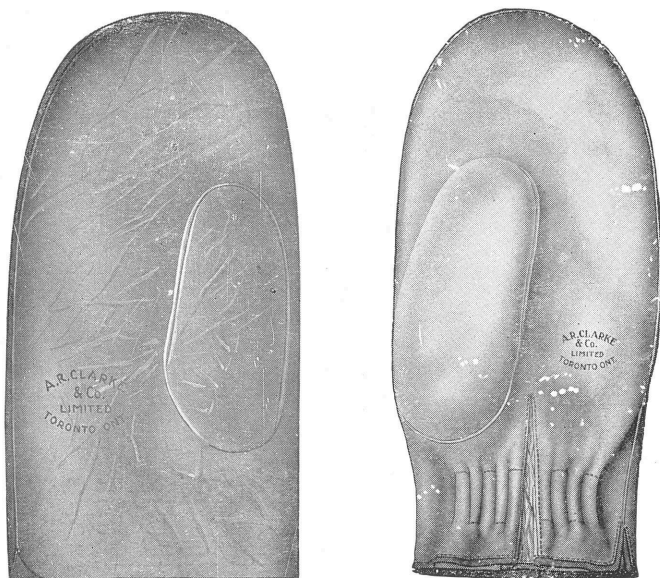
Yours truly,

A. R. Clarke



Clarke's Gloves and Mitts

WE have been in business longer than any Canadian firm manufacturing this line of goods, and we do not hesitate to say that the line we are turning out at the present time is the most extensively used, and that the brand is the most popular. Quality and workmanship are first and paramount with us—the goods are absolutely the best on the market. Experience counts.



Unlined Working Mitts and Pullovers

	Per doz.
1000—Men's second quality Asbestos Tan Sheep, one-finger, unlined mitt, yellow shade	\$2.25
1001—Men's second quality Chrome Tan, unlined mitt, yellow shade	2.25



Unlined Working Mitts and Pullovers—Continued

	Per doz
1002 —Men's Chrome Tan Sheep, one-finger mitt, second quality	\$2.25
1003 —Men's second quality Chrome Tan, unlined mitt	2.25
1004 —Men's second quality Asbestos Tan Sheep, one-finger, unlined mitt, band top, yellow shade	2.25
1005 —Men's second quality Asbestos Tan Sheep, unlined mitt, with band top, yellow shade	2.25
1006 —Men's Chrome Tan Unlined, one-finger, band top mitt	2.25
1007 —Men's Chrome Tan Sheep, unlined, band top mitt	2.25
1008 —Men's first quality Asbestos Tan Sheep, one-finger mitt	2.50
1011 —Men's first quality Chrome Tan Sheep, unlined mitt	2.50
70 —One-finger, Yellow split Horsehide mitt, unlined	3.50
1015 —Pullover, Burro palm and thumb, heat and wet proof, sheep back, open top, large and roomy	3.50
74 —Pullover, Brown Burro, light weight	3.60
1016 —Pullover, largest size made, Asbestos Tan, welted thumb, open top	3.75
1017 —Pullover, Yellow Asbestos Tan Sheep, elastic wrist, welted thumb	4.50
1018 —Pullover, Horsehide face, with Chrome Tan Sheep back, band top	4.50
1019 —Pullover, in largest sizes, Pigskin face and Chrome Tan Sheep back, open top	4.50
1020 —Pullover, Yellow Burro, elastic top, bound, welted thumb, large sizes	4.50
461 —Pullover, Drab Burro, wax sewn, with welted thumb	4.75
463 —Pullover, in Drab Burro, elastic wrist, welted thumb, wax sewn, bound	5.50
490 —Pullover, in Brown Burro, wax sewn, welted thumb, elastic wrist, bound	5.50
560 —Pullover, Drab Chrome Tan Sheep, elastic wrist, bound	6.00



A. R. Clarke & Co., Limited, Toronto, Canada

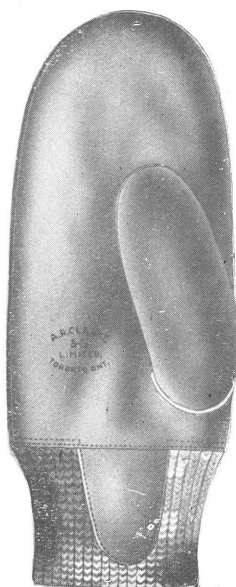
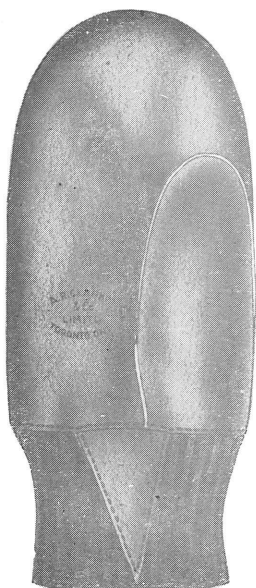
Unlined Working Mitts and Pullovers—Continued

	Per doz.
109—Unlined Indian Tan Elk mitt, second quality, welted seams, elastic wrist	\$ 6.50
385—Pearl Pigskin unlined mitt, welted seams, wax sewn, heat and wet proof	6.50
250—Men's unlined pullover mitt, Drab Horsehide face, Green Sheepskin back, and cuff with elastic	7.50
386—Pearl Pig pullover, elastic-bound cuff, welted seams.	7.50
86—One-finger gauntlet, Drab Horsehide palm, Drab Burro back and cuff, unlined, welted seams	9.00
115—Choppers' pullover of Indian Tan Elk, wax sewn and welted, seamless thumb	9.00
116—Pullover, Indian Tan Elk, wax sewn and welted, elastic wrist	9.00
201—Drab Horsehide (light weight), unlined, heat and wet proof, elastic wrist mitt, continuous thumb, welted and bound	9.00
335—Pullover, in Brown Horsehide face, Brown Burro back, elastic wrist, welted and wax sewn, bound	9.00
361—Pullover, in Chrome Tan Calf, elastic wrist, welted and wax sewn, bound, continuous thumb	9.00
402—Pullover, in Cherokee Horsehide, Cherokee Burro back, welted and wax sewn, elastic wrist, bound	9.00
404—Cherokee Horsehide (light weight) mitt, elastic wrist, welted and wax sewn, bound	10.00
118—Indian Tan Elk, elastic wrist, welted and wax sewn mitt, bound, continuous thumb	10.50
204—Pullover, in Drab Horsehide, good plump stock, welted and wax sewn, continuous thumb, bound, elastic wrist	10.50
280—Pullover, in Cream Horsehide, wax sewn and welted, bound, elastic wrist, continuous thumb	10.50
300—Pullover, in best quality Brown Horsehide, bound, welted and wax sewn, continuous thumb and elastic wrist	11.00
400—Pullover, in best quality Cherokee Horsehide, bound, welted and wax sewn, continuous thumb and elastic wrist	11.00



Clarke's Lined Mitts for Men

	Per doz.
1021—Men's second quality Black Sheep lined mitt, with knitted wrist	\$3.60
1022—Men's Yellow Asbestos Tan Sheep (second quality) lined mitt, knitted wrist	3.60
1012—Men's Yellow Asbestos Tan Sheep lined, one-finger working mitt	3.60



1023—Men's Yellow Pigskin face, Sheep back, lined mitt, knitted wrist	4.50
1024—Men's Horsehide face and Chrome Sheep back, lined mitt, knitted wrist	4.50
1025—Men's all Black Asbestos Tan Sheep, lined mitt, knitted wrist, welted thumb	4.50



Clarke's Lined Mitts for Men—Continued

	Per doz.
1026—Men's heavy Burro face, with Black Sheep back, lined mitt, welted thumb and knit wool wrists	\$ 4.50
478—Drab "Splits" (light weight), lined with knit woollen lining, knitted wrists	4.50
512—Brown "Splits" (light weight), lined with knit woollen lining, knitted wrists	4.50
1027—Men's Buckskin face, with Asbestos Sheep back, lined mitt, knitted wrists	4.75
1028—Men's Pigskin face, with Asbestos Tan Sheep back, knit wool-lined mitt, knitted wool wrists, welted thumb	6.00
562—Chrome Sheep mitt, lined with heavy knit wool, knitted wrists, welted thumb	6.50
1030—Men's Brown Napa Tan Sheep, heavy fleece-lined mitt, knitted wrists and welted thumb	8.00
252—Drab Horsehide, Drab Burro back, wool-lined mitt, knitted cuffs	8.50
213—Chrome Tan Drab Horsehide, knit wool-lined mitt, welted seams and wax sewn, knitted wrists	9.00
330—Brown Horsehide face, Burro back, knit wool-lined mitt, welted and wax sewn, knitted wrists	9.00
408—Cherokee Horsehide face, Burro back, knit wool-lined mitt, welted and wax sewn, knitted wrists	9.00
129—Indian Tan Elk, wax sewn and welted, knit wool-lined mitt, knitted wrists	10.50
216—Drab Horsehide, welted and wax sewn, knit wool-lined mitt, knit wool wrists, choicest stock used	10.50
406—Cherokee Horsehide, welted and wax sewn, knit wool-lined mitt, knit wool wrists	10.50
317—Brown Horsehide, extra good quality stock, welted and wax sewn, knit wool-lined mitt, with extra long knit wool wrist	11.00
304—Choice Brown Horsehide, full length, welted and wax sewn, elastic wrist mitt, woollen lining	12.00
120—Solid Indian Tan Elk, wax sewn and welted, full-length mitt, woollen lining, elastic wrist	12.00



Clarke's Lined Mitts for Men—Continued



- | | |
|--|----------------------------|
| 336 —Light-weight Brown Horsehide (choicest stock) driving mitt, fancy wool lining, with elastic snug-fit wrist . . . | Per doz.
\$12.00 |
| 208 —Heavy Drab Horsehide, full-length, welted and wax sewn, elastic wrist mitt, heavy woollen lining, embroidered and bound | 13.50 |
| 405 —Finest quality Cherokee Horsehide, full length, welted and wax sewn, elastic wrist mitt, heavy woollen lining, embroidered and bound | 13.00 |



Small Men's Lined Mitts

	Per doz.
469—Drab "Splits" (light weight) knit wool-lined mitt, knit wool wrists	\$4.50
136—Youths' Indian Tan Elk face, Cherokee split back, knit wool-lined mitt, knit wool wrists	7.50
253—Youths' Drab Horsehide face, Drab Burro back, knit wool-lined mitt, with knit woollen wrists	7.50
316—Youths' Brown Horsehide face, Brown Burro back, knit wool-lined mitt, knit wool wrists	7.50
409—Youths' Cherokee Horsehide face, Cherokee Burro back, knit wool-lined mitt, knit wool wrists	7.50
212—Choice stock solid Drab Horsehide, knit wool-lined, Youths' mitt, knit wool wrists	9.00

Boys' Lined Mitts

	Per doz.
516—Children's, Boys' and Youths' assorted Brown Burro mitts, Black wool knit wrist, light lining	\$2.25
1077—Boys' Black Sheep, three sizes assorted, lined mitt, Black knit cotton cuff	2.25
1078—Boys', three sizes assorted, Pig face, Black Sheep back, lined mitt, knitted cuff	3.00
Green or Black Chrome Tan, heat and wet proof, Sheep, Children's, Boys' and Youths' mitts, Black knit wool wrists and light lining.	
607—Children's	3.25
606—Boys'	3.50
605—Youths'	3.75
1079—Youths' Pig face and Black Sheep back-lined mitt, knitted wrist	4.00
113—Indian Tan Elk face, Cherokee Burro back, Youths' knit wool-lined mitt, knit wool wrist	4.50
Drab Horsehide face and Green Napa back, Children's, Boys' and Youths' light lined mitt, Black wool knit wrists.	
279—Children's	4.50
278—Boys'	4.75
277—Youths'	5.00
346—Youths' Brown Horsehide face, Brown Burro back, knit wool-lined mitt, with knit wool wrists	6.00
440—Youths' Cherokee Horsehide face, Cherokee Burro back, wool-lined mitt, with knit wool wrists	6.00



Boys' Gauntlets and Gloves

	Per doz.
Boys' Green and Brown Sheepskin gauntlet gloves, with fringe, plain bound cuff, lined.	
1075—Brown	\$ 6.50
1076—Green	6.50
604—Boys' unlined, fringe gauntlet glove, best quality Napa Tan Green Sheep, fancy embroidered hockey sticks on cuff. Assorted sizes, 5-8	7.50
616—Boys' fancy, unlined, fringe gauntlet glove, made of first quality Brown Napa Tan Sheep, embroidered star on cuff	7.50
241—Boys' Drab Horsehide, Plymouth-cut glove, Wristfit fastener, bound and unlined	8.00
603—Boys' lined, fringe gauntlet glove, best quality Green Napa Tan Sheep, fancy embroidered hockey sticks on cuff. Assorted sizes, 5-8	8.00
617—Boys' fancy lined, fringe gauntlet glove, best quality Napa Tan Sheep, embroidered cuff with star	8.00
242—Boys' lined Drab Horsehide, Plymouth-cut glove, bound, Wristfit fastener	9.00
315—Boys' solid Brown Horsehide gauntlet glove, Brown Burro cuff, welted, unlined. Assorted sizes, 5-8	10.50

Men's Unlined Working Gloves

	Per doz.
1032—Men's Chrome Tan Sheep unlined glove, soft and pliable.	\$3.75
1034—Men's Yellow Asbestos Tan Sheep unlined working glove	3.75
479—Drab Burro (light weight) unlined working glove, welted thumb, Plymouth pattern	4.00
1031—Men's Brown Burro unlined working glove, welted thumb	4.00
481—Drab Burro (light weight) unlined working glove, welted thumb, Wristfit fastener, Plymouth cut	4.50
1036—Men's Yellow Pigskin palm, with Asbestos Sheep back, unlined working glove	4.50



A. R. Clarke & Co., Limited, Toronto, Canada

Men's Unlined Working Gloves—Continued

	Per doz.
1039 —Men's Yellow Asbestos Tan Sheep unlined working glove, Wristfit fastener	\$6.00
1042 —Men's good quality Cream Tan Sheepskin unlined working glove, Wristfit fastener	6.50



1059 —Men's Chrome Tan Sheep outseam working glove	6.50
111 —Indian Tan Elk (second quality) unlined, Plymouth cut working glove, Wristfit fastener, welted thumb and wax sewn	7.50



Men's Unlined Working Gloves—Continued

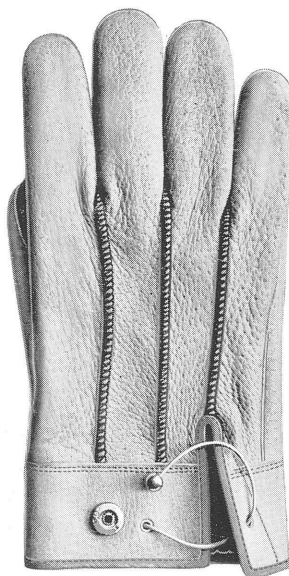
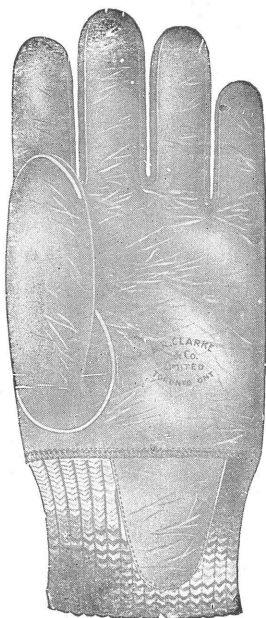


	Per doz.
1046 —Men's Horsehide face, with Drab Burro back, unlined working glove, Wristfit fastener	\$ 7.50
1061 —Men's Horsehide face, Burro back, unlined working glove, Wristfit fastener	7.50
1049 —Men's Horsehide face, with Asbestos Sheep back, unlined working glove	8.00
289 —Men's Cream Horsehide Plymouth pattern, unlined working glove, Wristfit fastener	9.00
220 —Drab Horsehide, unlined, Plymouth pattern working glove, Wristfit fastener	10.50
258 —Drab Horsehide face, Drab Burro back, unlined, outseam, working glove, Wristfit fastener	10.50
306 —Brown Horsehide, unlined working glove, Wristfit fastener, welted and bound	11.00
234 —Drab Horsehide unlined working glove, Wristfit fastener, bound, welted thumb	12.00
372 —Peccary Hog, unlined, wax sewn and welted, working glove, Wristfit fastener, embroidered back, Plymouth cut	12.50
228 —Men's Drab Horsehide, unlined, outseam, working glove, Burro cuff, Wristfit fastener, bound and welted	13.00
312 —Brown Horsehide, unlined, outseam, working glove, Wristfit fastener, strap thumb, bound	13.00
416 —Cherokee Horsehide, unlined, outseam, working glove, Wristfit fastener, strap thumb	13.00



Men's Lined Working Gloves

	Per doz.
1033 —Men's Chrome Tan Sheepskin, light-lined, working glove, welted thumb and band top	\$4.50
1038 —Men's Yellow Asbestos Tan Sheepskin lined glove, welted thumb and band top	4.50



1035 —Men's Yellow Asbestos Tan Sheepskin lined glove, welted thumb, bound, and Wristfit fastener	5.00
480 —Drab Burro (light-weight) lined working glove, Plymouth cut, welted thumb	5.00
483 —Drab Burro (light-weight) lined working glove, Plymouth pattern, Wristfit fastener, welted thumb	5.50
537 —Heat and wet proof Cream Sheep, lined, Plymouth-cut working glove	6.00

A. R. Clarke & Co., Limited, Toronto, Canada

Men's Lined Working Gloves—Continued

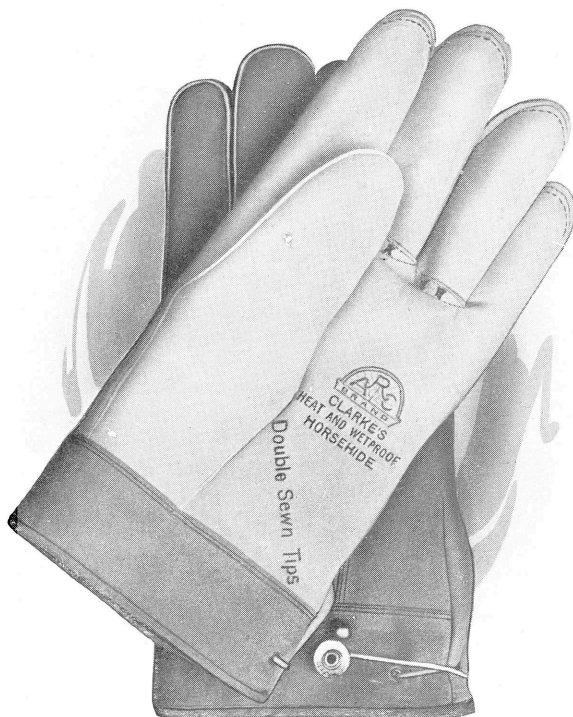
	Per doz.
1040—Men's Chrome Tan, heat and wet proof Sheepskin lined working glove, Wristfit fastener	\$ 6.50
500—Brown Burro, lined, Plymouth-cut glove, knitted wool wrists, embroidered back	6.50
127—Indian Tan Elk (second quality), lined, Plymouth-cut glove, knitted wool wrists, embroidered back	7.50
472—Drab Burro, lined, Plymouth pattern, bound working glove, embroidered back, Wristfit fastener	7.50
498—Brown Burro, lined, Plymouth pattern, bound working glove, embroidered back, Wristfit fastener	7.50
567—Heat and wet proof Tan Sheep, Plymouth-cut glove, welted, Wristfit fastener and lined	7.50
395—Pearl Pigskin face, Drab Burro three-finger back, Plymouth-cut, lined working glove, Wristfit fastener, welted thumb.	8.00
1047—Men's Horsehide palm, Drab Burro back, lined working glove	8.50
1062—Men's Horsehide face, with Burro back, lined glove	8.50
1066—Men's Cream Horsehide, with Cream Burro back, lined working glove	9.00
283—Cream Horsehide face, Cream Sheep three-finger back, Plymouth-cut, lined glove, embroidered back and knit wrists	9.00
389—Solid Pearl Pigskin, Plymouth-cut, lined working glove, welted thumb, embroidered back and Wristfit fastener	9.00
151—Indian Tan Elk face, Saranac Sheep three-finger back, Plymouth-cut, lined glove, Wristfit fastener and bound	9.50
155—First Quality Indian Tan Elk face, Burro three-finger back, Plymouth cut, lined glove, bound, Wristfit fastener.	10.00
257—Drab Horsehide face, Drab Burro three-finger back, Plymouth-cut, lined glove, Wristfit fastener, embroidered back, welted thumb, bound.	10.00
311—Brown Horsehide face, Burro back, Plymouth-cut, lined working glove, welted thumb, embroidered back and knit wool wrists	10.00



A. R. Clarke & Co., Limited, Toronto, Canada

Men's Lined Working Gloves—Continued

- | | |
|---|----------|
| | Per doz. |
| 290—Cream Horsehide face, Cream Sheep three-finger back, Plymouth-cut, lined glove, embroidered back and Wristfit fasteners, welted thumb | \$10. 50 |
| 331—Brown Horsehide face, Brown Burro three-finger back, Plymouth-cut, lined working glove, Wristfit fastener, embroidered back | 10. 50 |



- | | |
|---|--------|
| 421—Cherokee Horsehide front, Cherokee Burro three-finger back, lined glove, embroidered back, welted thumb and Wristfit fastener | 10. 50 |
| 126—First quality Indian Tan Elk, knit wool-lined glove, knit wool wrists, welted seams, embroidered back | 11. 00 |



Men's Lined Working Gloves—Continued

	Per doz.
157—Finest Tan Elk palm, Burro three-finger back, Plymouth cut glove, lined with woollen lining, Wristfit fastener, welted seams	\$11.50
378—Peccary Hog face, Burro three-finger back, lined Plymouth cut glove, Wristfit fasteners, welted seams; . .	11.50
339—Brown Horsehide face, Brown Burro back, double stitched outseam, heavy wool-lined Plymouth cut working glove	12.00
423—Cherokee Horsehide face, Cherokee Burro back, double stitched tips, welted thumb, heavy wool-lined working glove, Wristfit fasteners	12.00
123—First quality Indian Tan Elk, lined Plymouth cut working glove, Wristfit fasteners, embroidered back. . . .	13.00
337—Finest quality light-weight Brown Horsehide, neat striped fleece lining, embroidered back, in-seam driving glove, best elastic "Snug-fit" wrist	13.50
341—Solid Brown Horsehide, double stitched tips, outseam, striped fleece-lined glove, Wristfit fasteners	13.50
374—Peccary Hog, lined Plymouth glove, Wristfit fastener, embroidered back, welted thumb	13.50
417—Finest quality Cherokee Horsehide, double stitched, outseams, lined glove, strap thumb, Wristfit fastener, bound	13.50

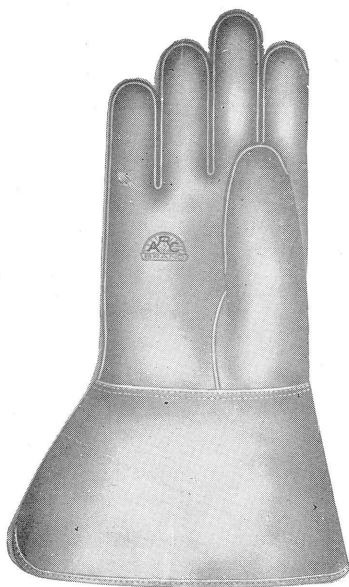
Men's Unlined Gauntlet Gloves

	Per doz.
1013—Men's one-finger Asbestos Tan Sheep, unlined gauntlet mitt	\$3.60
1053—Men's Yellow Asbestos Tan Sheep, unlined gauntlet glove, roomy cuff	4.50
1055—Men's Chrome Tan Sheep gauntlet glove, unlined . .	5.00
1056—Men's Drab Burro unlined gauntlet working glove, Russet cuff	5.50
1058—Men's Horsehide face, Asbestos Sheep back, unlined gauntlet glove	6.50
484—Drab Burro Plymouth cut glove, with Burro cuff, welted thumb, gauntlet	7.00
515—Brown Burro Plymouth cut glove, with Burro cuff, welted thumb, gauntlet	7.00
501—Brown Burro Plymouth cut glove, with Burro cuff, welted throughout and bound, unlined gauntlet . . .	8.00



A. R. Clarke & Co., Limited, Toronto, Canada

Men's Unlined Gauntlet Gloves—Continued



	Per doz.
595—Men's fancy fringe unlined Green Napa Tan Sheep gauntlet, embroidered hockey stick on cuff, and bound	\$ 9.00
611—Men's fancy fringe unlined Brown Napa Tan Sheep Plymouth cut gauntlet glove, embroidered star on cuff, and bound	9.00
230—Drab Horsehide unlined gauntlet glove, Drab Burro three-finger back and cuff, embroidered back and welted thumb	10.50
268—Drab Horsehide face, Burro back and cuff, unlined, outseam, gauntlet glove, welted and bound	12.00
333—Brown Horsehide front, Burro back and cuff, unlined, outseam, gauntlet glove, welted seams and wax sewn and bound	12.00
231—Drab Horsehide, unlined, outseam, gauntlet glove, wax sewn, bound and welted, sharp thumb, Burro cuff	13.00
285—Cream Horsehide, unlined, outseam, gauntlet glove, Cream Sheep cuff, strap thumb and welted	13.00
287—Cream Horsehide Plymouth cut unlined gauntlet glove, fancy star, embroidered, fringe, Cream Sheep cuff	13.00
318—Solid Brown Horsehide, unlined gauntlet glove, Brown Burro cuff, strap thumb and welted	13.00
322—Solid Brown Horsehide, unlined gauntlet glove, Brown Burro cuff with fancy fringe, welted thumb	13.50
327—Brown Horsehide gauntlet glove, unlined, Brown Burro cuff, with strap and Wristfit fastener (perfect fitting wrist), outseam, and wax sewn	13.50
320—Solid Brown Horsehide, unlined gauntlet glove, outseam, strap thumb, Brown Burro cuff	14.00
434—Men's Cherokee Horsehide unlined gauntlet glove, Cherokee Burro cuff, welted thumb, outseams	14.00

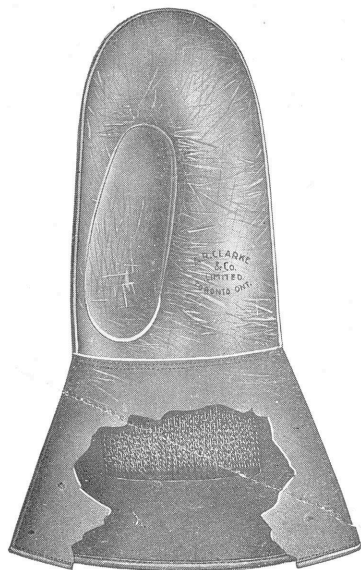


Men's Lined Gauntlet Gloves

	Per doz.
509—Brown Burro, Plymouth-cut, lined gauntlet glove, Brown Burro cuff	\$ 7.50
1067—Men's Horsehide face, Asbestos Tan Sheep back, Ply- mouth-cut gauntlet glove, lined	7.50
476—Drab Burro, light wool-lined, Plymouth-cut gauntlet glove, embroidered back and welted thumb, Burro cuff.	9.00
508—Brown Burro, light wool-lined, Plymouth-cut gauntlet glove, Brown Burro cuff, welted thumb	9.00
596—Green Napa Tan Sheep, fancy fringe, lined gauntlet glove, embroidered hockey sticks on cuff	10.00
612—Brown Napa Tan Sheep, fancy fringe gauntlet, em- broidered star on cuff	10.00
159—Finest quality Elk face, Burro back, fleece-lined gauntlet glove	13.00
131—Finest Indian Tan Elk, wool-lined, Plymouth-cut gaunt- let glove, Cherokee split cuff, welted and wax sewn	13.50
232—Drab Horsehide, Plymouth-cut, lined gauntlet glove, Drab Burro cuff, welted thumb	13.50
286—Cream Horsehide, light wool-lined, Plymouth-cut gaunt- let glove. Cream Sheep bound cuff	13.50
321—Brown Horsehide, light wool-lined, Plymouth-cut gaunt- let glove, Burro cuff and welted thumb	13.50
345—Brown Horsehide, wool-lined, double-stitched gauntlet glove, outseams, Brown Burro cuff	13.50
438—Cherokee Horsehide, double-stitched, outseam gauntlet glove, Cherokee Burro cuff, medium wool lining	13.50
435—Finest quality Cherokee Horsehide, outseam, double- stitched gauntlet glove, welted thumb, medium wool lining	15.00



Men's Lined Gauntlet Mitts



Per doz.

518—Brown Burro, heavy fleece-lined gauntlet mitt, knit wool wristlets, inside cuff, bound and welted . **\$10.50**

428—Cherokee Horsehide, medium wool-lined gauntlet mitt, Cherokee Burro back and cuff, bound and welted . **14.00**

133—Finest Indian Tan Elk lined gauntlet mitt, Cherokee Burro cuff, knit wool wristlets in cuff, welted and wax sewn . **16.50**

343—Brown Horsehide, heavy fleece-lined gauntlet mitt, Brown Burro cuff, welted and wax-sewn seams and knit wool wristlets inside cuffs . **16.50**

Automobile Gauntlets

Per doz.

983—Black Cape Kid, unlined gauntlet glove, large stiff cuff . **\$12.00**

984—Brown Cape Kid, unlined gauntlet glove, large stiff cuff . **12.00**

985—Men's Black kid-lined auto gauntlet, embroidered back . **13.50**

987—Black Cape Kid, unlined gauntlet glove, strap wrist, stiff cuff . **18.00**

988—Brown Cape Kid, unlined gauntlet glove, strap wrist, stiff cuff . **18.00**

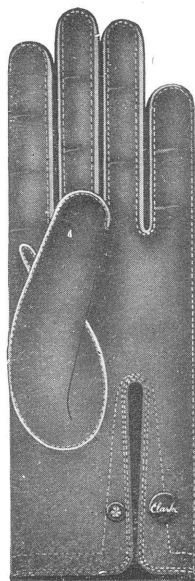
989—Black, dull finish Horsehide, unlined gauntlet glove, perforated back, large, stiff expansion cuff, strap wrist; the proper unlined gauntlet for driving a car . **31.50**

991—Men's extra heavy, fleece-lined Black Cape Kid auto gauntlet, strap wrist with dome fastener, extra large roomy cuff . **33.00**



Clarke's Unlined Kid Gloves

THERE is no glove made that is better than Clarke's, whether labelled "Imported" or not. Canadians are able to make the finest—let us prove it. Every glove made of finest Cape leather, selected, finished and shaded to suit the most critical.



Clarke's Unlined Kid Walking Gloves

	Per doz.
900—Men's Russet Brown, unlined, cold Kid glove, embroidered, and one-dome fastener	\$ 6.50
941—Boys' Tan unlined, finest Cape Kid glove, embroidered and one-dome fastener, assorted sizes	6.50
901—Men's Russet Brown Cape unlined glove, dome fastener, embroidered	8.50
902—Men's Black, unlined Cape glove, one-dome fastener, embroidered back	9.00
903—Men's neat Tan Cape Kid unlined glove, fancy embroidered back, one-dome fastener; the most popular line	9.00
932—Ladies' Tan Cape Kid unlined glove, the neatest and most serviceable glove made for ladies, embroidered back and dome fasteners	9.00
904—Men's Tan Cape Kid unlined, outseam glove, fancy embroidered back, dome fastener	12.00
905—Men's extra-fine Light Tan Cape Kid, unlined, outseam glove, fancy embroidered back, dome fastener	13.50
906—Men's extra-fine Slate Cape Kid, unlined, outseam glove, embroidered back, dome fastener	13.50



Clarke's Lined Kid Gloves

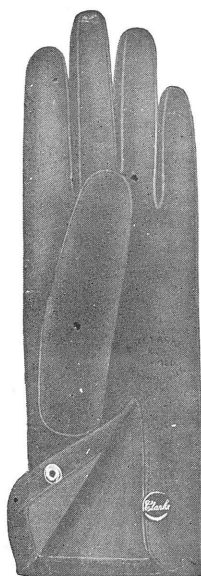
	Per doz.
916—Men's Russet Brown Cape, lined glove, embroidered and one-dome fastener	\$ 6.50
942—Boys' first quality Tan Cape Kid, lined glove, one-dome fastener, embroidered	6.50
917—Men's Tan Cape lined glove, dome fastener and embroidered	7.50
907—Men's Tan Cape, silk-lined, outseam glove, embroidered, dome fastener	8.50
914—Men's Black Cape, lined glove, one-dome fastener, embroidered	8.50
918—Men's Tan Kid, inseam, lined glove, one-dome fastener, embroidered	8.50
944—Boys' best quality Tan Cape Kid, striped wool-lined glove, embroidered back, dome fastener	8.50
919—Men's Tan Cape Kid, striped, fleece-lined glove, embroidered back, dome fastener	9.00
908—Men's Tan Cape Kid, silk-lined, inseam glove, embroidered back, one-dome fastener	10.50
920—Men's Tan Cape Kid, light wool-lined glove, embroidered back, one-dome fastener	10.50
909—Men's finest quality Tan Cape Kid, outseam, silk-lined glove, embroidered back, one-dome fastener	11.00
921—Men's fine Tan Cape, light wool-lined, Huggit wrist driving glove, embroidered back	11.00
910—Men's best quality Tan Cape Kid, silk-lined, outseam glove, one-dome fastener, embroidered back	12.00
922—Men's finest quality Tan Cape, wool-lined glove, embroidered back, outseam, dome fastener	12.00
923—Men's strap wrist, finest quality Tan Cape Kid, wool-lined glove, embroidered back	12.00
924—Men's Tan Kid, seamless wool lining, outseam glove, embroidered back, dome fastener	13.50
925—Men's finest quality Tan Cape Kid, lined glove, outseams, strap wrist, embroidered back	13.50
929—Men's best quality Tan Cape Kid, chamois-lined glove, embroidered back, one-dome fastener	18.00
930—Men's finest quality Tan Cape, Chinchilla fur-lined glove, outseams, one-dome fastener	20.00
934—Ladies' finest Tan Cape Kid, wool-lined glove, embroidered back, two-dome fasteners; a warm, serviceable glove	9.00



Clarke's Lined Kid Mitts

	Per doz.
940—Boys' Tan Cape wool-lined mitt, elastic wrist, bound.	\$ 6.50
911—Men's Black Cape fleece-lined mitt, elastic wrist, bound	8.00
912—Men's Tan Cape, wool-lined, elastic wrist, bound mitt .	8.00
931—Ladies' Dark Brown Cold Kid, fleece-lined, elastic wrist mitt	10.50

Clarke's Suede and Mocha Lined Gloves



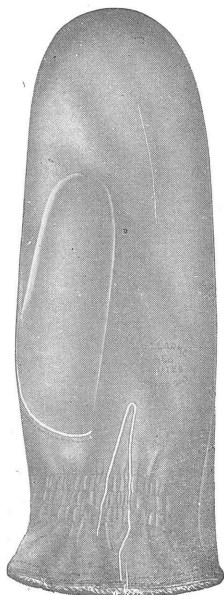
	Per doz.
949—Men's second quality Reindeer Suede, light fleece-lined glove, embroidered back, one-dome fastener	\$ 6.50
747—Men's Reindeer Suede, wool-lined glove, embroidered back, one-dome fastener	9.00
748—Men's Reindeer Suede, wool-lined, elastic wrist glove	9.00
751—Men's Reindeer Suede, wool-lined glove, embroidered back, one-dome fastener	10.50
950—Men's Reindeer Suede, wool-lined, strap wrist glove	10.50
970—Ladies' Reindeer Suede, light wool-lined, outseam glove, embroidered back, one - dome fastener	11.00
945—Men's Grey Suede, unlined, outseam gloves, embroidered back, one-dome fastener	12.00
951—Men's Grey Reindeer Suede, wool-lined, outseam glove	12.00
971—Ladies' Reindeer Suede, wool-lined, inseam glove, two dome fasteners and embroidered back	12.00
946—Men's Reindeer Suede, silk-lined glove, embroidered back, one-dome fastener	13.50



A. R. Clarke & Co., Limited, Toronto, Canada

Clarke's Suede and Mocha Lined Gloves—Continued

	Per doz.
947—Men's Grey Reindeer Suede, silk-lined glove, one-dome fastener, embroidered back	\$13.50
953—Men's Grey Reindeer Suede, wool-lined, outseam glove, one-dome fastener, embroidered back	13.50
954—Men's Reindeer Suede, wool-lined, strap wrist glove, one-dome fastener, embroidered back	13.50
959—Men's Reindeer Suede, Chinchilla fur-lined, outseam glove, one-dome fastener, embroidered back	18.00
960—Men's best quality Reindeer Suede, Chinchilla fur-lined glove, one-dome fastener, embroidered back	20.00



Clarke's Lined Suede and Mocha Mitts

	Per doz.
733—Men's Reindeer Suede, light wool-lined, elastic wrist, bound mitt	\$ 9.00
962—Men's Reindeer Suede, wool-lined, strap wrist mitt	12.00
964—Men's Reindeer Suede, Chinchilla fur, elastic wrist, bound mitt	15.00
974—Ladies' Reindeer Suede, Chinchilla fur-lined mitt, two dome fasteners, embroidered back and bound	15.00

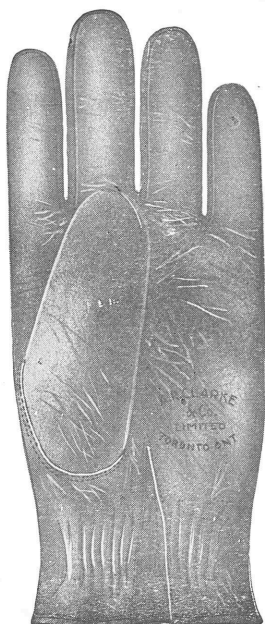
Canvas Gloves

	Per doz.
1086—Plain Canvas glove	\$0.80
1087—Canvas glove, with knit wrists	1.00
1088—Ladies' plain Canvas gauntlet glove	1.25



Special Values

Per doz.



No. 225A.

- | | |
|--|----------------|
| 111L —Men's second quality Indian Tan Elk, unlined Plymouth cut glove, wax sewn, bound and Wristfit fastener | \$ 7.50 |
| 172E —Pullover in Indian Tan Smoked Deer, light weight, welted seams, wax sewn, continuous thumb and elastic wrist | 9.00 |
| 219 —Men's light-weight Drab Horsehide, light, wool-lined, elastic wrist, driving glove, bound and welted, extra good value | 9.00 |
| 225A —Men's Drab Horsehide lined Plymouth cut glove, Wristfit fastener, embroidered back, and bound | 9.00 |
| 306L —Men's Solid Brown Horsehide unlined working glove, elastic wrist, bound | 9.00 |
| 310A —Men's solid Brown Horsehide, medium wool-lined, Plymouth cut glove, bound, Wristfit fastener, embroidered back | 9.00 |
| 520 —Boys' Ochre Burro wool-lined gauntlet mitt, large embroidered cuff, bound | 6.00 |
| 834A —Men's Genuine Reindeer Mocha (second quality) fancy fleece-lined glove, embroidered, one-dome fastener | 12.00 |



Clarke's Bullhide Moccasins

CLARKE'S Bullhide Moccasins, absolutely the best wearing moccasin on the market, made of the most select chrome-tanned bullhide, guaranteed to be soft and pliable, and will remain so under all conditions. Every moccasin sewn by hand with "waxends," which insures against ripping. Best Klondyke eyelets used.

	Per doz.
1131 —Men's Drab Bullhide, chrome tanned, bottoms made of heavy first quality stock, Burro tops, 5 eyelets. Sizes, 6-12	\$21.00
1132 —Men's Drab Bullhide, chrome tanned moccasins, bottoms made of first quality heavy bullhide, tops of best Burro, 8 eyelets. Sizes, 6-12	24.00
1133 —Boys' chrome tanned Bullhide moccasins, first quality stock in bottoms and Burro tops, 7 eyelets. Sizes, 1-5	18.00
1134 —Boys' chrome tanned Bullhide moccasins in second quality bottoms with Burro tops, 5 eyelets. Sizes, 1-5	15.00
1136 —Youths' chrome tanned Bullhide moccasins, first quality bottoms and Burro tops, 4 eyelets. Sizes, 11-13	13.50

Clarke's Jack Buck Moccasins

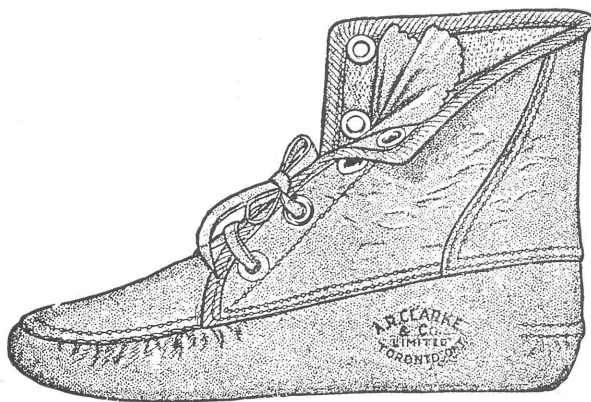
VERY finest quality, heavy Jack Buck, correct cut moccasins. These are all sewn with "waxends," by hand, and have fancy embroidered toes.

	Per doz.
1121 —Men's best quality Jack Buck bottoms, 5 eyelets, Burro tops, fancy toes, wax sewn. Sizes, 6-12	\$21.00
1122 —Men's finest quality Jack Buck moccasins, with heavy Burro tops, fancy toes, wax sewn, 8 eyelets. Sizes, 6-12	24.00
1123 —Men's finest quality Jack Buck moccasins, extra high Burro top, wax sewn throughout, fancy embroidered toes, 12 eyelets. Sizes, 6-12	27.00



Clarke's Indian Tan Moccasins

	Per doz.
1100—Men's finest quality Indian Tan Elk Moccasin, five Klondyke eyelets, wax sewn. Sizes, 6-12	\$16.50
1101—Men's second quality Indian Tan Elk Moccasin, same as the above. Sizes, 6-12	15.00
1102—Boys' finest quality Indian Tan Elk Moccasin, five Klondyke eyelets, wax sewn. Sizes, 1-5	13.50
1103—Men's finest quality Indian Tan Elk Moccasin, extra high Burro top, eight Klondyke eyelets, wax sewn. Sizes, 6-12	18.00
1104—Men's finest quality Indian Tan Elk Moccasin, five Klondyke eyelets, embroidered toe. Sizes, 6-12	15.00



1105—Women's finest quality Indian Tan Elk Moccasin, five Klondyke eyelets, embroidered toe. Sizes, 3-6	12.00
1106—Misses' finest quality Indian Tan Elk Moccasin, four Klondyke eyelets, embroidered toe. Sizes, 11-2	10.00
1107—Children's finest quality Indian Tan Elk Moccasin, four small eyelets, embroidered toe. Sizes, 7-10	7.50
1108—Infants' finest quality Indian Tan Elk Moccasin, four small eyelets, embroidered toe. Sizes, 3-6	6.50
1110—Men's second quality Indian Tan Elk Moccasin, Burro top, five Klondyke eyelets. Sizes, 6-12	13.50
1111—Women's second quality Indian Tan Elk Moccasin, Burro top, five eyelets. Sizes, 3-6	10.50



A. R. Clarke & Co., Limited, Toronto, Canada

Clarke's Indian Tan Moccasins—Continued

	Per doz.
1112 —Misses' second quality Indian Tan Elk Moccasin, Burro top. Sizes, 11-2	\$ 8.00
1113 —Children's second quality Indian Tan Elk Moccasin, Burro top. Sizes, 7-10	6.50
1114 —Infants' second quality Indian Tan Elk Moccasin, Burro top. Sizes, 3-6	5.50
1116 —Men's second quality Indian Tan Elk Moccasin, Burro top, plain toe. Sizes, 6-12	12.00



Clarke's Sheep-Lined Driving Sox

	Per doz.
1140 —Men's even shearling, 4½-in. top, driving sox. Sizes, 6-12	\$ 8.00
1141 —Men's choice even shearling, 6-in. top, driving sox. Sizes, 6-12	10.00
1142 —Men's trimmed shearling, 6-in. top, driving sox. Sizes, 6-12	6.50
1143 —Boys' sheep-lined driving sox. Sizes, 1-5	6.00
1144 —Youths' sheep-lined driving sox. Sizes, 11-13	5.50
1145 —Children's sheep-lined driving sox. Sizes, 7-10	4.50



Oil-Tanned Larrigans

Men's first quality, hand-sewn larrigan, five Klondyke eyelets, laces included. Brown, Black or Yellow Tan.

Per doz

[illegible]

Men's second quality hand-sewn larrigan, five Klondyke eyelets, laces included. Brown, Black or Yellow Tan.

1251 —Brown	19 50
1255 —Black	19 50
1258 —Yellow	19 50

Men's first quality, high cut, hand-sewn larrigan, seven Klondyke eyelets, laces included. Brown, Black or Yellow Tan.

1252 —Brown	27.00
1256 —Black	27.00
1259 —Yellow	27.00
1262 —Boys' first quality, hand-sewn oil-tanned larrigan. Sizes, 1 to 5	16.50
1263 —Youths' first quality, hand-sewn oil-tanned larrigan. Sizes, 11 to 13	15.00
1264 —Little Gents' first quality, hand-sewn oil-tanned larri- gan. Sizes, 7 to 10	13.00



Clarke's Lumbermen's Sox

	Per doz.
1405—Youths' Black, fulled and tufted, garter tie	\$3.50
1408—Boys' Blue and Black, stripe, fulled and tufted, garter tie	4.50
1419—Men's Black, Blue stripe, Blue top, heel and toe, fulled and tufted, cord tie	6.00
1406—Boys' Red and Black and Brown and Black, fulled and tufted, garter tie	7.00
1412—Men's Red and Black, Blue and Black check, fulled and tufted, garter tie	7.50
1431—Men's Red and Black and Blue and Black stripe, fulled and tufted, cord tie	8.00
1414—Black River driver's, cord tie	8.25
1416—Men's Dark Grey, Red stripe, top, heel and toe, fulled and tufted, cord tie	9.00
1423—Men's extra heavy Black worsted, purple circular stripe top, fulled and tufted, cord tie; best sock made to wear.	9.50
1424—Men's extra heavy, pure Black worsted, cord tie, fulled and tufted	9.50
1422—Men's extra heavy Black Mackinaw, Red circular stripe top, fulled and tufted, cord tie	11.50

Clarke's Hose

	Per doz.
1612—Men's light-weight Mottled Grey, White heel and toe.	\$1.65
1660—Men's Light Grey, White top, heel and toe, light weight	1.65
1664—Men's Dark Grey, White heel and toe, light weight	1.65
1615—Men's Dark Grey, White stripe top, White heel and toe, light weight	1.75
1609—Men's light-weight, Light Grey, White top, heel and toe	2.00
1619—Men's light-weight Mottled half-hose	2.00
1625—Men's medium-weight, Dark Grey, White top, heel and toe	2.00



A. R. Clarke & Co., Limited, Toronto, Canada

Clarke's Hose—Continued

	Per doz.
1630 —Men's medium-weight, Dark Grey, Blue heel and toe.	\$2.00
1635 —Men's medium-weight, Grey, with White top and toe.	2.00
1608 —Men's light-weight, Myrtle Green half-hose	2.25



1637 —Men's medium-weight, Dark Grey, Red and Blue heel and toe, assorted	2.25
1640 —Men's medium-weight, mixed Grey and Green stripe .	2.25
1645 —Men's medium-weight Black sock	2.25
1663 —Men's light-weight worsted, Black half-hose	2.25



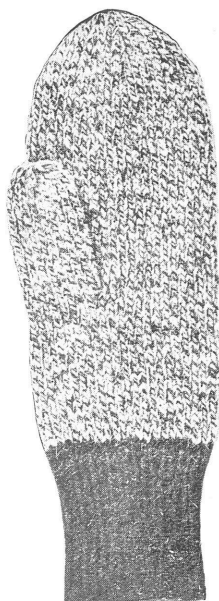
A. R. Clarke & Co., Limited, Toronto, Canada

Clarke's Hose—Continued

	Per doz.
1617—Men's medium-weight Grey, with White top, heel and toe	\$2.50
1627—Men's Brown Hanson, with White top, heel and toe, medium weight	2.50
1649—Men's Grey Hanson, White top, heel and toe, medium weight	2.50
1666—Men's light-weight worsted, assorted Navy Blue and Brown half-hose	2.50
1621—Men's Dark Grey, Blue heel and toe, with ribbed top	2.75
1656—Men's heavy Dark Grey, White heel and toe and White striped top	3.00
1671—Men's medium-weight all-wool Grey, with White top, heel and toe	3.00
1680—Men's White three-quarter hose, medium weight	3.00
1631—Men's very Dark Grey, with Blue heel and toe, heavy	3.75
1622—Men's heavy-weight Light Grey, with Dark Grey top, heel and toe	3.75
1629—Men's very heavy Dark Grey, with White top and Blue heel and toe	4.00
1682—Men's White, heavy all-wool ribbed	4.00
1651—Men's Dark Grey, heavy ribbed, Red striped top	4.50
1662—Men's Dark Grey mixture, White top, heel and toe, heavy, all-wool	4.50
1669—Men's heavy ribbed, Red, with White top, heel and toe	4.50
1683—Men's very heavy White, heavy ribbed	4.50
1685—Men's heavy-weight Light Grey, with Dark Grey top, heel and toe	4.25
1618—Men's Dark Grey mixture, with White top, heel and toe, heavy weight	3.50
1657—Men's heavy-weight Grey, with White top, heel and toe	3.50
1672—Men's heavy-weight Dark Grey, with White top, heel and toe	3.50
1681—Men's all-wool White, three-quarter hose	3.50



Clarke's Wool Mitts and Gloves



	Per doz.
1500 —Boys' Red and Black and Blue and Black, with Black wrist, hand-knit mitt	\$2.50
1502 —Boys' Red and Grey and Red and White mottled, hand-knit mitt	3.00
1519 —Men's Grey and Black with Red wrist, hand-knit glove	4.75
1520 —Men's Red and Grey and Blue and Grey knit wrist, hand-knit glove	4.75
1524 —Boys' Red and Black with stripe roll top, mitt	2.00
1527 —Boys' assorted stripe mitts	3.00
1529 —Men's Dark Grey Mixture mitt	2.75
1530 —Men's Red and Black and Blue and Black check mitt.	2.50
1535 —Men's Black with Yellow or White stripe mitt	4.75
1536 —Men's Grey Mixture, with Black roll top, heavy wool mitt	4.00
Men's extra fine wool, light weight, inside pullover mitt, long wrist, seamless.	
1541 —White	2.50
1543 —Black	2.50
1544 —Red	2.50
1548 —Men's Black wool mitt, with Red top	4.50
1550 —Men's Special Mixture, machine-made glove, in neat assorted patterns	5.25
1553 —Men's roll top, Grey with Red or Blue stripe mitt.	2.25



SHIRTS

OUR shirt department is doing an ever-increasing business, due to the fact that the public has at last found a shirt that fits properly and wears well. We are turning out a line of Working and Outing Shirts that positively cannot be equalled for quality, both in material and workmanship. The following are some of the points that help sell CLARKE'S:

All seams doubly stitched with the strongest thread.

Button holes and sleeve openings are all bar tacked and buttons are sewn on by hand.

Skirt openings are reinforced with gussets to prevent tearing.

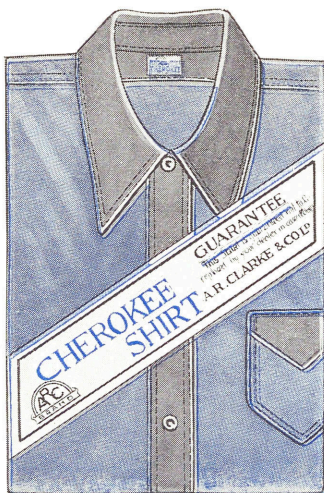
All garments are made regulation size. Positively no skimping of material or misfits.

Each and every shirt bears the famous A. R. C. Brand trade-mark and is fully guaranteed.

In our description we give you the actual weight of the shirt itself, its color and the material of which it is made. We ask you to be sure and quote the Stock Number when ordering.



Clarke's Cherokee Shirts



WORKING Shirt, made of a nap drill of extra close weave, a guaranteed untearable cloth, and each shirt is labelled with our Cherokee Guarantee, "Not to rip or tear and will be replaced in case it does." Made with extension band collar and pocket. Actual weight of shirt, 15 ounces.

	Per doz.
3030—Black	\$10.50
3031—Blue	10.50
3032—Khaki	10.50
3033—Olive Green	10.50
3034—Seal Brown	10.50
3035—Slate	10.50

Clarke's Extra Heavy Cherokee, an especially good shirt for extra hard wear. Weight, 20 ounces.

	Per doz.
3040—Black	\$12.00
3041—Blue	12.00
3042—Khaki	12.00
3043—Olive Green	12.00
3044—Seal Brown	12.00
3045—Slate	12.00
3046—Cardinal	12.00
3047—Myrtle	12.00



Clarke's Dreadnoughts

WORKING or Camping Shirts that are made of Venetian Drill (Egyptian Cotton, triple weave), a cloth that cannot be equalled for durability. The shirts have a heavy, silky finish, which lends appearance to their military cut; they are made with two expansion pockets, covered with flaps; have extension collar bands, and have the best buttons obtainable, which are sewn on by hand.

	Per doz.
3076—Olive Green, 18 oz.	\$16.00
3077—Tan, 18 oz.	16.00
3079—Tan, one pocket only, 22 oz.	18.00
3078—Tan, brass snap fasteners, 22 oz.	21.00

Clarke's Flannel and Flannelette Shirts

	Per doz.
3660—Men's Pale Blue with neat Green and White stripes, Flannelette shirt, doubly stitched throughout, extension band collar, and pocket. Weight, 12 oz.	\$ 6.00
3154—Men's striped Flannelette in neat dark patterns, made with extension band collar, doubly stitched throughout, and pocket. Weight, 13 oz.	8.50
3155—Men's Pale Blue Monoplane Flannel, made with reversible collar, double stitching, pearl buttons and pocket. Weight, 9 oz.	9.00
3136—Men's light-weight fancy stripe all-wool Flannel shirt, made with reversible collar, double stitching and pocket. Weight, 9 oz.	10.50
3419—Men's Flannel, Fancy Mixture with neat green stripe. Double stitching throughout, pearl buttons and pocket. Weight, 9 oz.	10.50
3162—Men's Light Grey Flannel outing shirt, made with lounge collar and double cuff. Finest pearl buttons. An attractive shirt and a seller. Weight, 11 oz.	12.00
3200—Men's Army Flannel, double stitching throughout, extension band, collar and pocket. A splendid working shirt. Weight, 20 oz.	12.00



A. R. Clarke & Co., Limited, Toronto, Canada

Clarke's Flannel and Flannelette Shirts—Continued

	Per doz.
3158 —Men's Grey Ceylon Flannel, made with reversible collar, pocket, double stitching throughout, and best pearl buttons. Weight, 7 oz.	\$12.00
3183 —Men's striped fancy all-wool Flannel, in neat patterns. Coat shirt style, lounge collar, double stitching and best pearl buttons. An attractive outing shirt. Weight, 13 oz.	15.00
3202 —Men's genuine all-wool Army Flannel, reversible collar, double stitching throughout, pocket, pearl buttons. The best all purpose shirt for men. Weight, 15 oz.	15.00
3177 —Neat Purple and White striped Flannel, lounge collar and double cuffs, pocket, pearl buttons, doubly stitched throughout. Weight, 13 oz.	15.00
3182 —Men's Fancy Flannel, in neat striped patterns, cut in coat shirt style, with lounge collar and double cuff, doubly stitched throughout and best pearl buttons. Weight, 10 oz.	24.00
3190 —Men's Fancy Green and Blue Check all-wool Scotch Flannel, made in coat shirt style, with lounge collar and double cuffs, doubly stitched throughout and best pearl buttons. Weight, 11 oz.	30.00
3191 —Men's Fancy Tartan Plaid Scotch all-wool Flannel, coat shirt style, with lounge collar and double cuffs. Light but serviceable. Weight, 12 oz.	34.00
3193 —Extra fine quality, Scotch all-wool Flannel, assorted Tartan Plaids, made in coat shirt style, with lounge collar and double cuffs, doubly stitched throughout and only finest pearl buttons used. Absolutely the warmest shirt for its weight in existence. Weight, 15 oz.	42.00

Clarke's Tweeds

	Per doz.
3066 —Men's light weight Mole Tweed, Dark striped pattern, made with extension band collar, pocket, and doubly stitched throughout. Weight, 18 oz.	\$ 9.50
3328 —Men's Dark Striped Tweed, made in the usual way. Very heavy and durable. Weight, 25 oz.	10.50
3329 —Men's extra soft neat Dark Grey Tweed. Made in the usual way. Weight, 20 oz.	12.00
3331 —Men's heaviest weight Dark Tweeds in assorted patterns. Extension band collar, pocket, pearl buttons, and doubly stitched throughout. Weight, 30 oz.	15.00



Clarke's Serges

	Per doz.
3316 —Men's Khaki Serge shirt, made with extension band collar, pocket, double stitched throughout, four-piece collar, pearl buttons. A popular Western shirt. Weight, 22 oz.	\$10.50
3287 —Men's Royal Blue and Cardinal Serge shirt, made with extension band collar, pocket and double stitched throughout, best pearl buttons. Weight, 19 oz.	12.00
3298 —Men's medium weight Blue Serge, made with extension band collar, pocket, double stitched throughout, pearl buttons. Weight, 21 oz.	12.00
3317 —Men's very fine Khaki Serge, made with extension band, four-piece collar, pocket, best pearl buttons, and double stitched throughout	12.00
3378 —Clay's Navy Blue all-wool Serge shirt for men, two expansion pockets, with flaps. Weight, 20 oz.	12.00
3288 —Men's Olive Green, Purple and Mixed, heavy ribbed Serge. Extra good weight. Made with extension band collar, pocket, pearl buttons, and double stitched throughout. Weight, 25 oz.	13.50
3289 —Men's Blue, Tan and Green Serge, made with extension band collar, pocket, pearl buttons, and double stitched throughout. Weight, 20 oz.	13.50
3301 —Men's extra fine Blue Serge, made with extension band, four-piece collar, pocket, pearl buttons, and double stitched throughout. A popular Western shirt. Weight, 22 oz.	15.00

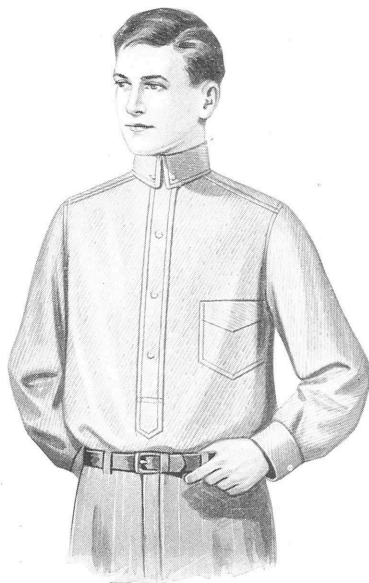
Clarke's Melton Shirts

	Per doz.
3240 —Men's Soft Green, Brown and Claret Melton, extension band collar, double stitching, pearl buttons. Weight, 14 oz.	\$ 9.00
3274 —Very Dark Grey Melton, made in the usual way. A popular seller. Weight, 17 oz.	10.50
3241 —Men's Purple, Claret and Brown Melton, double stitched throughout, pocket, extension band collar and pearl buttons. Weight, 17 oz.	12.00
3267 —Men's medium weight Blue Melton, extension band collar, double stitched throughout, pearl buttons, pocket and four-piece collar. Weight, 19 oz.	12.00
3242 —Men's Green, Brown and Purple Melton, made with extension band collar, double stitched throughout, pocket and pearl buttons. Weight, 19 oz.	13.50



Clarke's Melton Shirts—Continued

- | | Per doz. |
|---|----------------|
| 3251 —Men's Soft Dark Fawn striped Melton, double stitched, extension band, four-piece collar, and pearl buttons. Weight, 17 oz. | \$13.50 |
| 3239 —Men's outing shirt, in neat Brown Melton, lounge collar, double stitching, pearl buttons. Can be had in Green and also Maroon shades. Weight, 16 oz. | 15.00 |



- | | |
|--|--------------|
| 3243 —Men's Cardinal Melton, double stitched, extension band collar, pocket and pearl buttons. Weight, 19 oz. | 15.00 |
| 3245 —Men's Soft Green Melton, made in the usual way with double stitching, etc. Weight, 18 oz. | 15.00 |
| 3246 —Men's Purple Melton, double stitched, pocket, extension band collar, pearl buttons, etc. Weight, 18 oz. | 15.00 |
| 3252 —Men's Maroon, Brown and Grey Melton with small Black stripe, double stitched throughout, pearl buttons, extension band collar. Weight, 17 oz. | 15.00 |



A. R. Clarke & Co., Limited, Toronto, Canada

Clarke's Melton Shirts—Continued

	Per doz.
3278 —Men's Light Grey Melton, double stitched throughout, extension band collar, pearl buttons and pocket. Weight, 17 oz.	\$15.00
3244 —Men's Soft Brown and Green Melton, double stitched throughout, extension band collar, yoke and pearl buttons. Weight, 18 oz.	16.50
3269 —Better quality men's Blue Melton, double stitched throughout, extension band collar, pearl buttons and pocket. Weight, 19 oz.	16.50
3230 —Men's Grey Melton, very soft and warm, double stitched, extension band collar, four-piece collar, pocket. Mohair braid reinforced shoulder. Weight, 22 oz.	17.50
3231 —Men's Blue Melton, same as above. Weight, 22 oz.	17.50
3250 —Men's Brown Melton, double stitching, pocket, extension band collar, pearl buttons. Weight, 20 oz.	18.00
3255 —Men's Brown Melton, Black stripe face and check back, double stitched throughout, extension band collar, pocket and pearl buttons. Weight, 17 oz.	18.00
3257 —Men's Blue Melton, with small Black check on face and stripe on back of cloth, double stitched throughout, extension collar band, pocket and pearl buttons. Weight, 18 oz.	18.00
3259 —Brown, Green and Blue diagonal stripe Melton, very neat pattern, double stitched throughout, pearl buttons, extension collar band. Weight, 18 oz.	18.00
3232 —Men's extra heavy Grey Melton, double stitching, extension band collar, pocket, same as above. Weight, 29 oz.	19.50
3233 —Men's extra heavy Blue Melton, same as above. Weight, 29 oz.	19.50
3260 —Men's Brown, Olive Green and Pale Green Melton, double stitched throughout, four-piece collar, split yoke, pearl buttons, extension collar band and pocket. Weight, 19 oz.	21.00
3234 —British Columbia Loggers' Special. Blue Melton with "Cape Shoulders," double stitched throughout, double back and front, three-button cuff, extension band collar, pocket with flap. Length, 28 in. Weight, 39 oz.	40.00
3236 —Loggers' extra heavy Grey, same as above. Weight, 36 oz.	40.00



A. R. Clarke & Co., Limited, Toronto, Canada

Clarke's Melton Shirts—Continued

Per doz.

- 3235**—Loggers' extra heavy Blue Melton, double back and front, double stitched, pocket with flap, extension band collar. Length, 28 in. Weight, 34 oz. **\$48.00**



- 3237**—British Columbia Logger's Special. Grey Melton with "Cape Shoulders," double stitched throughout, pocket, extension band collar, double back and front. Length, 28 in. Weight, 42 oz. **48.00**



Clarke's Heavy Kerseys



Per doz.

3211—Men's Blue, Grey, Brown and Black Herringbone Kersey, double stitching throughout, extension band collar, pocket, pearl buttons. The proper shirt for extreme cold weather. Weight, 25 oz. . . . \$15.00

3212—Men's Grey Herringbone Kersey, double stitching, extension band collar, pocket. Weight, 22 oz. . . . 15.00

Clarke's Mackinaw Shirts

Per doz.

3502—Loggers' Red and Black Check Mackinaw, double stitched throughout. Weight, 26 oz. . . . \$12.50

3222—Lumbermen's Red and Black, Blue and Black Check Mackinaw, double stitched, extension band collar and pocket. A heavy waterproof shirt, and one that will stand hardest wear. Weight, 28 oz. . . . 20.00

3226—Loggers' Khaki Mackinaw (length 28 in.), double stitching, extension band collar, pocket. An extra heavy waterproof, short length shirt for lumbermen. Weight, 30 oz. . . . 21.00

3227—Lumbermen's heavy Brown and Black Check Mackinaw, double stitching, extension band collar, pocket. Very heavy fleecy nap. Weight, 30 oz. . . . 24.00



Clarke's Twill Shirts

	Per doz.
3020—Men's heavy Black nap back Twill, double stitching, extension band collar, pocket. Weight, 16 oz.	\$ 9.00
3021—Khaki nap back Twill, double stitched, extension band collar, pocket. Weight, 14 oz.	9.50
3022—Green nap back Twill, double stitched, extension band collar, pocket. Weight, 15 oz.	9.50
3095—Men's Black Beatrice Twill, sateen finish, double stitched, extension band collar, pocket. Weight, 10 oz.	9.50
3025—Men's Brown Twill, extension band collar, double stitched throughout, pearl buttons and pocket. Weight, 15 oz.	9.50

Clarke's Chambrays

	Per doz.
3081—Men's Light Chambray, made in the usual way, with four-piece collar, pearl buttons. Weight, 10 oz.	\$6.00
3082—Men's Blue Chambray, double stitched throughout, extension band collar, pocket. Weight, 11 oz.	7.50
3084—Men's Check Chambray, double stitched, pearl buttons and pocket. Weight, 13 oz.	7.50
3412—Men's Chambray Outing shirt, in Tan, Blue and Heliotrope, coat shirt style, with lounge collar and cuffs. Weight, 7 oz.	8.50

Clarke's Duck and Denim Shirts

A SHIRT for rough work. We make all weights and qualities in this line. Unless otherwise mentioned, they will be made with four-piece collar, split shoulder, extension collar band, pearl buttons, and will be big and roomy.

	Per doz.
3018—Blue Duck, a light-weight shirt for working men. Weight, 10 oz.	\$6.00
3019—Tan Duck, four-piece collar, plaster cuff. Weight, 9 oz.	6.00



A. R. Clarke & Co., Limited, Toronto, Canada

Clarke's Duck and Denim Shirts—Continued

	Per doz.
3000 —Blue, Khaki and Brown Duck, an extra light shirt for working men. Weight, 10 oz.	\$ 7.50
3051 —Blue, Black and Brown Duck, double stitched, pocket. Weight, 8 oz.	7.50
3097 —Tan Duck, a light, well-made shirt; double stitching, extension band collar, and pocket. Weight, 8 oz.	7.50
3421 —Men's pure White Duck, Outing shirt, reversible collar, pearl buttons, double stitched throughout. Weight, 10 oz.	8.00
3001 —Pale Green, Light Blue and Linen, Duck Outing shirt, lounge collar, double stitched throughout, extension cuffs, pocket. Weight, 11 oz.	9.00
3005 —Green Denim, trimmed with Khaki, double stitching, extension collar band. Weight, 13 oz.	9.00
3006 —Khaki Denim, collar and button pleat, trimmed with Green, double stitching, extension collar band. Weight, 13 oz.	9.00
3007 —Blue Denim, collar and button pleat, trimmed with Brown Denim, double stitching, pocket and extension collar band. Weight, 13 oz.	9.00
3008 —Brown Denim, collar and button pleat, trimmed with Blue Denim, double stitching, extension collar band and pocket. Weight, 13 oz.	9.00
3059 —Khaki Duck, heavy weight, double stitched, pocket, extension band on collar. One that will give service. Weight, 16 oz.	10.50
3061 —Men's Tan Mercerised Duck, a soft, silky shirt, nice to look at and splendid to wear, double stitching, extension band collar, pocket. Weight, 14 oz.	10.50

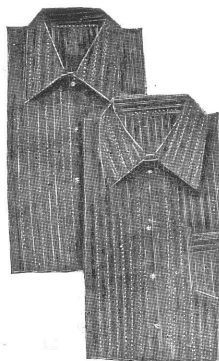
Clarke's Cotton Drill Shirts

	Per doz.
3868X —Men's Black Drill. Weight, 9 oz.	\$4.50
3868X —Men's Tan Drill. Weight, 8 oz.	4.50
3868 —Men's Black Drill, White stripe, black buttons. Weight, 9 oz.	4.50
3749 —Men's Tan striped Drill, pocket, double stitching, pearl buttons. Weight, 11 oz.	6.00



Clarke's Cotton Drill Shirts—Continued

	Per doz.
3002 —Men's plain Black Drill, pocket. Weight, 10 oz.	\$6.50
3670 —Men's Drill, Black with White stripe, pearl buttons, pocket. Weight, 10 oz.	6.50
3016 —Linen Drill, double stitching, extension band on collar, pocket. Weight, 11 oz.	7.50
3087 —Men's Black and White Striped Drill, double stitching, extension band collar, pocket. Weight, 11 oz.	7.50
3088 —Men's Black and White stripe Drill, extra heavy back and front (double ply), double stitching, four-piece collar with extension band. Weight, 12 oz.	8.00
3003 —Men's plain Black Drill, double stitching, pocket and extension band collar. Weight, 13 oz.	8.50
3065 —Men's neat stripe Drill, working shirt, in assorted patterns, double stitched throughout, extension band collar and pocket. A splendid wearing shirt. Weight, 16 oz.	8.50
3098 —Men's Grey Herringbone Drill, made with extension band collar, pearl buttons, pocket, and double stitched throughout. Weight, 8 oz.	8.50
3104 —Men's Grey and Tan, diagonal print Drill, extension band collar, pocket, double stitched throughout. Weight, 10 oz.	8.50
3017 —Men's Black, nap back Drill, a very serviceable shirt, made with double stitching, extension band collar and pocket. Weight, 15 oz.	9.00
3053 —Men's Khaki Drill, double stitching, extension band collar and pocket. Weight, 11 oz.	9.00
3009 —Men's Brown Drill, double stitching, extension band on collar, with pocket. Weight, 15 oz.	9.50
3010 —Men's plain Black Drill, double stitching, extension band collar, with pocket. Weight, 16 oz.	9.50



A. R. Clarke & Co., Limited, Toronto, Canada

Clarke's Cotton Drill Shirts—Continued

	Per doz.
3011 —Men's Blue Drill, double stitching, extension band on collar, pocket. Good heavy weight. Weight, 16 oz.	\$ 9.50
3012 —Men's Khaki Drill, double stitching, extension band collar, pocket. Weight, 16 oz.	9.50
3015 —Green Drill, double stitching, extension band on collar, pocket. Weight, 15 oz.	9.50
3014 —Tan Drill. Extra good weight. Double stitching, extension band on collar, two extra large expansion pockets with flaps. Weight, 16 oz.	10.50
3028 —Men's heavy Black nap back Drill, extension band collar, double stitched throughout, pearl buttons, and pocket. Weight, 18 oz.	12.00

Clarke's Sateen Shirts

	Per doz.
3896 —Men's Black Sateen, pearl buttons. Weight, 7 oz.	\$4.50
3091 —Men's Black Sateen, double stitched, four-piece collar, pocket, yoke. Weight, 9 oz.	7.50
3094 —Men's Black Italian Sateen, double stitched, extension band collar, pocket. Weight, 11 oz.	9.00

Clarke's Oxford Shirts

	Per doz.
3069 —Men's light-weight striped Oxfords. Weight, 8 oz.	\$4.50
3064 —Men's Blue, Brown and Grey, striped Oxfords, made in the usual way. Weight, 10 oz.	6.50
3067 —Men's Pale Blue and Green striped Oxfords, two-piece collar, pearl buttons. Weight, 9 oz.	6.50
3068 —Men's fancy striped Oxfords, assorted patterns, made with extension collar band, double stitched throughout, pocket and best pearl buttons. Weight, 11 oz.	7.50
3108 —Men's plain Oxford in Heliotrope Blue, lounge collar, double stitching, pocket. Just the shirt for outings. Weight, 13 oz.	9.50



Outing and Working Shirts

	Per doz.
x912 —Men's Blue Print polka dot, double stitching, pearl buttons and pocket. Weight, 9 oz.	\$ 7.50
3083 —Men's Blue Gingham outing shirt, reversible collar, pearl buttons, doubly stitched throughout. Weight, 8 oz.	7.50
3107 —Men's Pale Blue Poplin, doubly stitched throughout, reversible collar, pearl buttons and pocket. Weight, 8 oz.	7.50
3073 —Men's Light and Dark Fawn Cassimere, double stitching, pearl buttons, pocket. Weight, 12 oz.	8.50
3090 —Men's Butchers' Linen, doubly stitched throughout, pocket and extension band collar. Weight, 11 oz.	8.50
3416 —Men's Corded Zephyr in Canary, Light Grey and Blue. Coat shirt style, lounge collar and cuff. Best pearl buttons. Weight, 8 oz.	9.00
3413 —Men's Dimity in Cream or Blue shades. Coat shirt with lounge collar and cuffs. Best pearl buttons. Weight, 7 oz.	9.50
3415 —Men's Mercerised Zephyr in neat fancy Blue stripe. Coat shirt, with lounge collar and cuffs, doubly stitching, pearl buttons. Weight, 8 oz.	9.50
3405 —Men's Tan Pongee coat shirt, with lounge collar and cuffs. Best pearl buttons. Weight, 7 oz.	10.50
3414 —Men's Grey Patricia. Coat shirt style, lounge collar and cuffs. Best pearl buttons. Weight, 9 oz.	10.50
3071 —Men's Striped Cassimere, doubly stitched throughout, extension band collar, pearl buttons, and pocket. Weight, 24 oz.	12.00
3194 —Men's all-wool Cashmere, in neat Brown, with fancy Black stripe, double stitched throughout, pocket, four-piece collar. Weight, 8 oz.	12.00
3408 —Men's Brown, Blue and Grey Poplin, coat shirt with lounge collar and cuff, doubly stitched throughout, pearl buttons, pocket. Neat and stylish. Weight, 11 oz.	13.50



Outing and Working Shirts—Continued

Per doz.

- 3075**—Men's Tan, Fawn and Olive Green Bedford Cord. A soft but heavy working shirt that will stand a great amount of wear, doubly stitched throughout, extension band collar, pocket. Weight, 18 oz. **\$15.00**



- 3160**—Men's Taffeta, White and Blue Hairline, coat shirt, with lounge collar and cuffs attached, double stitching throughout, pearl buttons and full yoke. Weight, 9 oz. **16.50**
- 3410**—Men's extra heavy Light Fawn Poplin, coat shirt, cut with lounge collar and cuffs, double stitching, pearl buttons. Weight, 16 oz. **18.00**
- 3261**—Men's Fawn, Blue and Tan Bedford Cord. Extension band collar, pearl buttons, doubly stitched throughout. A very warm, serviceable shirt. Weight, 23 oz. . . . **21.00**



Boys' Drill Shirts

	Per doz.
3086—Boys' Black Drill, with White stripe, made same as men's shirts. Weight, 8 oz.	\$4.75
3032—Boys' Khaki nap back Drill, pearl buttons, double stitched throughout and pocket. Weight, 9 oz.	6.00

Clarke's Flannelette Night Robes

	Per doz.
3151—Assorted stripes, Flannelette, 58 in. long, pocket, pearl buttons. Long and roomy. Weight, 11 oz.	\$ 9.00
3152—Assorted stripes, best quality Flannelette, length 58 in., pocket, pearl buttons, extra large and roomy. Weight, 16 oz.	12.00

Extra Special Clearing Prices

	Per doz.
3182—Men's Flannel in Pale Blue and Green stripe, made with reversible collar and doubly stitched throughout, pocket. Weight, 14 oz. Regular List Price, \$13.50. Clearing .	\$ 9.00
3173—Men's Flannel, Pale Green with neat Blue stripe. Reversible collar, pearl buttons, doubly stitched throughout, pocket. Weight, 12 oz. Regular List Price, \$11.00. Clearing	10.50
3176—Men's extra fine Flannel, neat Black and White stripe, made with lounge collar and double cuffs, pearl buttons, double stitching. Best value. Weight, 10 oz. Regular List Price, \$13.50. Clearing	12.00
3175—Men's Flannel, Pale Blue, Green and Purple stripe, made with reversible collar, double stitching, pearl buttons and pocket. Weight, 13 oz. Regular List Price, \$15.00. Clearing	13.50
3179—Men's Flannel, neat Pink and Green stripe, made with reversible collar, double stitching and pocket. Weight, 12 oz. Regular List Price, \$16.50. Clearing	15.00
3179—Men's Fine Dark Grey Flannel, neat Black stripe, made with lounge collar and double cuffs, doubly stitched throughout, pocket and best pearl buttons. Weight, 15 oz. Regular List Price, \$18.00. Clearing	15.00



A. R. Clarke & Co., Limited, Toronto, Canada



Clarke's Sheepskin-Lined Coats

Nature's own protection against storm and cold.

NOTE.—Add **\$1.00** to regular price to have sheep-lined sleeves instead of kersey-lined sleeves.

Add **\$1.00** to regular price to have Wombat collar instead of beaverette or cloth collar.

	Each.
2200 —Men's Brown Duck single-breasted sheep-lined coat, light shearling, natural sheep collar, grey fleece-lined sleeves, two flap pockets, length 30 in.	\$2.90
2219 —Boys' Brown Duck sheep-lined coat, same as above, but with Brown sheep collar	2.90
2218 —Boys' Brown Duck double-breasted sheep-lined coat, Beaverette collar, knit wristlets, Grey fleece-lined sleeves, two flap pockets, duck arm shields	3.00
2205 —Men's Brown Duck single-breasted sheep-lined coat, short shearling, Brown sheep collar, Grey fleece-lined sleeves, leather reinforced pockets, duck arm shields, length 31 in.	3.25
2220 —Men's Brown Duck double-breasted sheep-lined coat, Beaverette collar, roll top fly front, leather reinforced pockets, tweed-lined sleeves, knit wristlets, arm shields, patent clasp fasteners	3.75
2405 —Men's Light Drab Corduroy single-breasted coat, Beaverette collar, two leather reinforced pockets, tweed-lined sleeves, knit wristlets, leather arm shields	4.00
2224 —Men's Brown Duck double-breasted sheep-lined coat, 7-in. Beaverette collar, roll top fly front, red check fleece-lined sleeves, leather reinforced pockets and arm shields, knit wristlets	4.50
2440 —Men's Fancy Brown Corduroy double-breasted sheep-lined coat, Beaverette collar, fly front, knit wristlets, tweed-lined sleeves, two leather reinforced pockets, leather arm shields, length 32 in., patent clasp fasteners	5.00



A. R. Clarke & Co., Limited, Toronto, Canada

Clarke's Sheepskin-Lined Coats—Continued

	Each.
2230 —Men's Brown Duck double-breasted sheep-lined coat, 7-in. Beaverette collar, roll top fly front, open bottom, three leather reinforced pockets, leather arm shields, kersey-lined sleeves, knit wristlets, length 33 in., patent clasp fasteners	\$5.50
2420 —Men's Light Drab Corduroy double-breasted sheep-lined coat, Beaverette collar, tweed-lined sleeves, two leather reinforced pockets, knit wristlets, roll top fly front, leather arm shields, length 33 in., patent clasp fasteners	5.50
2421 —Men's Dark Drab Corduroy double-breasted sheep-lined coat, Beaverette collar, tweed-lined sleeves, two leather reinforced pockets, knit wristlets, leather arm shields, roll top fly front, length 33 in.	5.50
2515 —Men's Drab Bedford Cord double-breasted sheep-lined coat, roll top fly front, Beaverette collar, kersey-lined sleeves, leather reinforced pockets, knit wristlets, length 33 in.	5.50
2580 —Men's Blue-Grey Whipcord double-breasted sheep-lined coat, roll top fly front, tweed-lined sleeves, knit wristlets, leather reinforced pockets and arm shields, 7-in. Beaverette collar, length 32 in.	5.50
2236 —Men's Brown Duck double-breasted sheep-lined coat, extra long shearling, 7-in. Beaverette collar, roll top fly front, kersey-lined sleeves, leather reinforced pockets and arm shields, knit wristlets, length 36 in.	6.00
2260 —Boys' Brown Duck double-breasted sheep-lined ulster, high Beaverette collar, tweed-lined sleeves, knit wristlets, leather reinforced pockets and arm shields, length 42 in.	6.00
2425 —Men's Brown Corduroy, double-breasted sheep-lined coat, Beaverette collar, kersey-lined sleeves, three leather reinforced pockets, knit wristlets, leather arm shields, length 33 in., patent clasp fasteners	6.00
2426 —Men's Dark Drab Corduroy double-breasted sheep-lined coat, Beaverette collar, roll top fly front, three leather reinforced pockets, knit wristlets, leather arm shields, kersey-lined sleeves, length 33 in.	6.00
2427 —Men's Light Drab Corduroy, as above	6.00



Clarke's Sheepskin-Lined Coats—Continued

	Each.
2525 —Men's Slate Bedford Cord double-breasted sheep-lined coat, 7-in. Beaverette collar, long shearling, kersey-lined sleeves, leather reinforced pockets, knit wristlets, leather arm shields, length 32 in.	\$6.00
2526 —Men's Drab Bedford Cord sheep-lined coat, same as above	6.00
2527 —Men's Brown Bedford Cord sheep-lined coat, same as above	6.00
2540 —Men's Drab Mole double-breasted sheep-lined coat, roll top fly front, long shearling, kersey-lined sleeves, knit wristlets, two leather reinforced pockets and arm shields, length 33 in.	6.00
2226 —Men's Brown Duck double-breasted sheep-lined coat, roll top fly front, high collar of Beaverette, sheep-lined sleeves, leather reinforced pockets	6.50
2418 —Men's Dark Drab Corduroy double-breasted sheep-lined coat, roll top fly front, 7-in. Beaverette collar, kersey-lined sleeves, leather reinforced pockets and arm shields, knit wristlets, length 35 in.	6.50
2423 —Men's Dark Drab Corduroy double-breasted sheep-lined coat, Beaverette collar, sheep-lined sleeves, two leather reinforced pockets, length 33 in., patent clasp fasteners	6.50
2515A —Men's Brown Bedford Cord double-breasted sheep-lined coat, roll top fly front, 7-in. Beaverette collar, sheep-lined sleeves, leather arm shields, length 32 in.	6.50
2518 —Men's Brown Bedford Cord double-breasted sheep-lined coat, Wombat collar, roll top fly front, kersey-lined sleeves, knit wristlets, leather arm shields, length 32 in.	6.50
2615 —Men's Grey Frieze double-breasted sheep-lined coat, roll top fly front, 7-in. Beaverette collar, knit wristlets, leather reinforced pockets and arm shields, length 32 in.	6.50
2440A —Men's Fancy Old Gold Corduroy double-breasted heavy shearling sheep-lined coat, roll top fly front, 7-in. Beaverette collar, leather reinforced pockets and sheep-lined sleeves, length 32 in.	7.00
2461 —Men's Brown Corduroy double-breasted sheep-lined coat, 7-in. Beaverette collar, roll top fly front, mackinaw-lined sleeves, 3 leather reinforced pockets, knit wristlets, length 33 in.	7.00



A. R. Clarke & Co., Limited, Toronto, Canada

Clarke's Sheepskin-Lined Coats—Continued

Each.

- 2460**—Men's Light Drab Corduroy double-breasted sheep-lined coat, 7-in. Beaverette collar, roll top fly front, mackinaw-lined sleeves, 3 leather reinforced pockets, knit wristlets, length 33 in. **\$7.00**



- 2470**—Men's Mottled Corduroy double-breasted sheep-lined coat, roll top fly front, 7-in. Beaverette collar, kersey-lined sleeves, knit wristlets, leather reinforced pockets and arm shields, length 32 in. **7.50**



A. R. Clarke & Co., Limited, Toronto, Canada

Clarke's Sheepskin-Lined Coats—Continued

	Each.
2525A —Men's Blue-Grey Bedford Cord double-breasted sheep-lined coat, roll top fly front, Wombat collar, kersey-lined sleeves, knit wristlets, leather reinforced pockets and arm shields, length 32 in.	\$7.50
2527A —Men's Brown Bedford Cord double-breasted sheep-lined coat, Wombat collar, roll top fly front, kersey-lined sleeves, knit wristlets, leather reinforced pockets and arm shields, length 32 in.	7.50
2040 —Men's Black Oil-Dressed Leather, heavy full-length shearling, sheep-lined coat, mackinaw-lined sleeves and knit wristlets, with leather arm shields, 7-in. Beaverette collar, length 33 in., roll top fly front	8.00
2456 —Men's Dark Drab Corduroy double-breasted heavy shearling sheep-lined coat, roll top fly front, 7-in. Wombat collar, kersey-lined sleeves, knit wristlets, leather reinforced pockets and arm shields, length 32 in.	8.00
2457 —Men's Dark Brown Corduroy double-breasted heavy shearling sheep-lined coat, Wombat collar, roll top fly front, kersey-lined sleeves, knit wristlets, leather reinforced pockets and arm shields, length 32 in.	8.00
2257 —Men's Brown Duck double-breasted sheep-lined ulster, extra blizzard proof shearling, high Beaverette collar, three leather reinforced pockets, roll top fly front, length 52 in., mackinaw-lined sleeves	8.50
2255 —Sheep-lined sleeves	9.50
2256 —Wombat collar and sheep sleeves	10.50

Clarke's Sheepskin-Lined Vests

	Each.
2385 —Men's Dark Drab Corduroy sheep-lined vest, full length lining, four pockets, buckle and strap, buttons and button holes	\$2.25
2386 —Men's Dark Brown Corduroy sheep-lined vest, as above.	2.25
2387 —Men's Lemon Shade Corduroy sheep-lined vest, as above	2.25
2388 —Men's Light Drab Corduroy sheep-lined vest, as above	2.25





Clarke's Leather Vests

- 2049—Men's Black Leather Corduroy-lined vest, with dome fasteners, two flap and one welt pockets Each. \$2.25



Clarke's Warm Cloth Coats

- | | Each. |
|--|---------------|
| 2050 —Men's Brown Duck Rubberized coat, two patch riveted pockets, buttons and button holes, length 32 in. | \$2.00 |
| 2300 —Men's Brown Duck, red check fleece-lined working coat, corduroy collar, flap pockets, duck arm shields, length 32 in. | 2.25 |



- | | |
|--|-------------|
| 2305 —Men's Brown Duck, Mackinaw-lined coat, grey fleece-lined sleeves, corduroy collar, flap pockets, knit wristlets, duck arm shields, length 31 in. | 2.50 |
| 2051 —Men's Brown Rubberized Duck hunting coat, four outside flap pockets, two large inside game pockets, riveted, 5 in. corduroy collar, length 32 in. | 2.75 |



A. R. Clarke & Co., Limited, Toronto, Canada

Clarke's Warm Cloth Coats—Continued

	Each.
2060 —Men's Rubberized Brown Duck. vulcanized check fleece lining, corduroy collar, flap pockets, length 32 in. A very serviceable coat for rough wear	\$2.75
2357 —Men's Brown Duck and Brown Bedford Cord reversible coat, pockets on each side, dome fasteners, 5-in. collar	3.00
2310 —Men's Brown Duck and Dark Drab Corduroy reversible coat, 5-in. collar, dome fasteners, pockets leather reinforced on cord side, length 32 in.	3.25
2356 —Men's Blue Grey Whipcord double-breasted coat, tweed-lined throughout, 6-in. collar, flap pockets, patent "anti-pulloff" buttons, length 32 in.	3.25
2312 —Men's Light Drab Corduroy coat, Mackinaw-lined throughout, 5-in. corduroy collar, leather reinforced pockets, knit wristlets, length 32 in.	3.75
2571 —Men's Drab Whipcord coat, Mackinaw-lined throughout, fly front, 6-in. corduroy collar, knit wristlets, leather reinforced pockets, length 32 in.	4.00

Clarke's All-Wool Mackinaws

	Each.
2727 —Boys' Black Mackinaw double-breasted coat, full belt and buckle, two flap pockets, sizes 28-34	\$2.75
2700 —Men's Black Mackinaw coat, single-breasted, half belt and buckle, two flap pockets, length 32 in.	3.00
2705 —Men's Black Mackinaw double-breasted coat, full belt and buckle, three leather reinforced pockets, knit wristlets, length 32 in.	3.75
2721 —Men's Black Mackinaw single-breasted coat, half belt and buckle, two flap pockets, buttons and holes, length 32 in.	3.75
2830 —Men's Red Check Mackinaw single-breasted coat, two flap pockets, Prussian collar, length 31 in.	3.75
2706 —Men's Black Mackinaw double-breasted coat, full belt and buckle, three leather reinforced pockets, knit wristlets, buttons and button holes, length 33 in.	4.00
2710 —Men's Black Mackinaw double-breasted coat, full belt and buckles, three flap pockets, length 32 in.	4.00



A. R. Clarke & Co., Limited, Toronto, Canada

Clarke's All-Wool Mackinaws—Continued

- | | Each. |
|---|---------------|
| 2707 —Men's Black Mackinaw double-breasted coat, full belt and buckle, three leather reinforced pockets, knit wristlets, buttons and button holes, length 36 in. | \$4.25 |
| 2733 —Men's Khaki Mackinaw single-breasted coat, two flap pockets, half belt and buckle, knit wristlets, length 32 in. | 4.25 |



- | | |
|---|-------------|
| 2742 —Men's Sage Green Mackinaw single-breasted coat, half belt and buckle, two flap pockets, length 32 in. | 4.25 |
| 2720 —Men's Black Mackinaw double-breasted coat, full belt and buckle, three leather reinforced pockets, length 33 in. | 4.50 |
| 2730 —Men's Khaki Mackinaw double-breasted coat, full belt and buckle, three leather reinforced pockets, knit wristlets, length 33 in. | 5.00 |



A. R. Clarke & Co., Limited, Toronto, Canada

Clarke's All-Wool Mackinaws—Continued

	Each.
2731 —Men's Khaki Mackinaw coat, with shawl collar, full belt and buckle, three leather reinforced pockets, knit wristlets, length 33 in.	\$5.00
2740 —Men's Khaki Mackinaw single-breasted Norfolk coat, three patch pockets, length 32 in.	5.00
2732 —Men's Khaki Mackinaw coat, full belt and buckle, three leather reinforced pockets, knit wristlets, length 36 in., double-breasted style	5.50
2837 —Men's Green and Black check Mackinaw double-breasted coat, full belt and buckle, convertible collar, two flap pockets and strap on cuffs, length 35 in.	5.50
2725 —Men's Black Mackinaw double-breasted ulster, full belt and buckle, three flap pockets, shawl collar, strap on cuff, buttons and button holes, button on vest, length 52 in.	8.00
2735 —Men's Khaki Mackinaw double-breasted ulster, shawl collar, three flap pockets, raised seams, full belt and buttons, straps on cuffs, buttons and button holes, length 52 in.	9.00
Boys' Red and Black check Mackinaw double-breasted Norfolk coat, full belt and buttons, two flap pockets and strap on cuffs.	
2800 —Children's sizes, 22-26	3.25
2800 —Boys' sizes, 27-35	4.00

Clarke's Mackinaw Pants

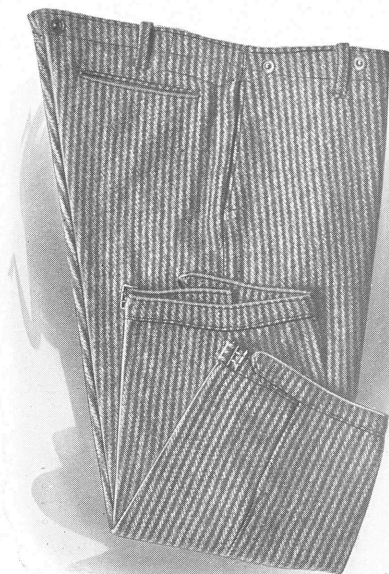
	Per doz.
2770 —Men's 28-oz. Black Mackinaw Stag pant, three pockets, belt loops	\$24.00
2750 —Men's 28-oz. Black Mackinaw long pant, three pockets .	27.00
2680 —Men's Black 36-oz. Mackinaw Stag pant, five pockets .	30.00
2755 —Men's 32-oz. Black Mackinaw long pant, strap and buckle, three pockets	30.00
2775 —Men's 32-oz. Black Mackinaw short pant, strap and buckle at knee, three pockets	30.00



A. R. Clarke & Co., Limited, Toronto, Canada

Clarke's Mackinaw Pants—Continued

	Per doz.
2760 —Men's 36-oz. Black Mackinaw long pant, three pockets	\$33.00
2791 —Men's 34-oz. Khaki Mackinaw short pant, strap and buckle at knee, three pockets	33.00
2792 —Men's 34-oz. Khaki Mackinaw Stag pant, three pockets	33.00



2765 —Men's 36-oz. Black Mackinaw long pant, strap and buckle, three pockets	36.00
2790 —Men's 34-oz. Khaki Mackinaw long pant, three pockets.	39.00
2793 —Men's Khaki Mackinaw Riding Breeches, Horsehide strappings, lace at knee, two top pockets and two hip pockets, belt loops	54.00



Clarke's Tweed Pants

	Per doz.
2643—Men's striped Tweed plain pants, three pockets, back strap, patented "anti-pulloff" buttons	\$16.20
2645—Striped Tweed plain pants, three pockets, back strap, patented "anti-pulloff" buttons	18.00
2650—Men's striped Tweed plain pants, three pockets, back strap, "anti-pulloff" buttons	21.00
2660—Men's heavy, non-tearable Tweed pants, three pockets, back strap, patented buttons	24.00
2662—Men's extra heavy Tweed long pants, check pattern, three pockets, back strap	27.00
2664—Men's untearable Tweed long pants, three pockets, back strap, "anti-pulloff" buttons	30.00

Pants

	Per doz.
2651—Men's Blue-Grey Whipcord plain long pants, three pockets, back strap, "anti-pulloff" buttons	\$24.00
2678—Men's Drab Bedford Cord long plain pants, three pockets, strap and buckle	27.00
2670—Men's Light Drab Whipcord tweed-lined pants, three pockets, strap and buckle, "anti-pulloff" buttons	30.00
2685—Men's Drab Bedford Cord full peg-top pants, five pockets, dome fastener on hip and watch pockets, side straps, belt loops, tab on hip pocket, welted seams and cuff bottoms	30.00
2689—Men's Light Drab Corduroy full peg-top pants, same as 2692	33.00
2690—Men's Dark Brown Corduroy full peg-top pants, same as 2692	33.00
2692—Men's Black and White Corduroy full peg-top pants, five pockets, dome fastener on hip and watch pockets, tab on hip, side straps, belt loops, welted seams and cuff bottoms	36.00



Pants—Continued

- 2693—Men's Brown and White Corduroy full peg-top pants,
same as No. 2692 Per doz. **\$36.00**



- 2684—Men's Olive Green Corduroy full peg-top pants, five
pockets, dome fasteners on watch and hip pockets, tab
on hip, side straps, belt loops, welted seams and cuff
bottoms **42.00**



Clarke's Khaki Coats and Pants

	Per doz.
2130—Men's Khaki Drill coats, plain cut with step collar, fine satin finish, brass buttons that can be removed for washing, pockets	\$18.00
2131—Men's Khaki medium peg-top pants to match, cuff, five pockets, belt loops, double sewn side seams	18.00
2142—Men's Kahki Drill single-breasted coat, military collar with extension band and dome fastener, four patch pockets with flaps, cuff on outside of sleeve, fine brass removable buttons, satin finish	24.00
2143—Men's Khaki Drill pants to match, full peg-top pants with cuff, welted side seams, five pockets, belt loops, bone buttons sewn on by hand	24.00
2144—Men's Khaki Drill Norfolk coat, with military extension band collar, two straps back and front over shoulder, full belt, patch pockets, removable brass buttons	30.00
2146—Men's Khaki Bedford Cord single-breasted coat, military extension band collar with dome fastener, four patch pockets, cuff on outside of sleeves, satin finished, removable brass buttons	27.00
2147—Men's Khaki Bedford Cord full peg-top pants to match, side straps, five pockets, dome fasteners on hip and watch pocket, tab on hip pocket, belt loops, welted seams and cuff bottoms	30.00
2151—Men's Khaki Duck pants, deep turn-up bottoms, belt loops, four pockets, white buttons sewn on inside	15.00
2152—Men's Brown Duck smock with Prussian collar, four patch pockets and patented buttons	15.00

Clarke's Automobile "Dusters"

	Each.
2158—Men's Brown Union Crash double-breasted motor coat, white pearl buttons, rings and eyelets	\$2.00
2160—Men's Brown Union Crash double-breasted, extra heavy shrunk motor coat, pearl buttons, rings and eyelets	3.00
2155—Men's Butcher Linen single-breasted motor coat, Prussian collar, extension band, two large pockets, white pearl buttons, strap on sleeves, length 52 in.	1.75



Clarke's Imported Raincoats

- Each.
- 2170**—Men's all-wool Paramatta waterproof coat; color, Light Fawn; Prussian collar and pockets . . . **\$5.50**
- 2171**—Men's Light Fawn, all-wool Paramatta waterproof coat, Prussian collar with tab, protected seams and buttons . . . **6.00**
- 2172**—Men's Light Fawn, double texture, all-wool Paramatta waterproof coat, Prussian collar with tab, protected seams and buttons, pockets **6.50**
- 2174**—Men's Dark Fawn, double texture, all-wool Paramatta waterproof coat, three pockets, Prussian collar with tab, protected seams and buttons . . . **7.50**



Clarke's Corduroy Suits for Boys

Small Boys' Durovell (Odorless) Corduroy two-piece suit, in Myrtle and Deep Blue shades, fancy cut coat with sailor collar, full belt, pocket and pleats, extra linen sailor collar and reversible vest; pants to match, buttons on side and front: Suit lined throughout with best lining. Each.

2115—Sizes, 000 to 1 **\$4.00**

2115—Sizes, 2 to 4 **4.50**

Boys' Drab Corduroy knickers, lined throughout.

2120—Sizes, 21 to 24 Per doz.
\$ 9.00

2120—Sizes, 25 to 28 **12.00**

2120—Sizes, 29 to 33 **15.00**

Boys' three-piece suits, made of best quality mouse-colored Corduroy, lined throughout, pockets in coat and pants, bone buttons, well sewn seams. A neat, durable suit for any boy.

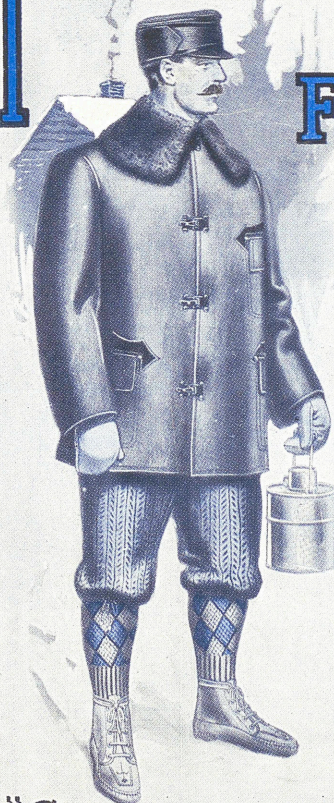
2111—Sizes, 0 to 2 Each.
\$2.50

2111—Sizes, 3 to 5 **2.75**

2111—Sizes, 6 to 8 **3.00**



FROM HEAD TO FOOT



"Clarke made 'em all"

CLARKE'S



QUALITY

